

CR-Form-v7

CHANGE REQUEST

33.234 CR 034 rev - Current version: **6.2.0**

For **HELP** on using this form, see bottom of this page or look at the pop-up text over the symbols.

Proposed change affects: UICC apps ME Radio Access Network Core Network

Title:	Multiple Tunnels to the same PDG for different W-APN		
Source:	Samsung		
Work item code:	WLAN	Date:	23/06/2004
Category:	B	Release:	Rel-6
	Use <u>one</u> of the following categories: F (correction) A (corresponds to a correction in an earlier release) B (addition of feature), C (functional modification of feature) D (editorial modification) Detailed explanations of the above categories can be found in 3GPP TR 21.900 .		Use <u>one</u> of the following releases: 2 (GSM Phase 2) R96 (Release 1996) R97 (Release 1997) R98 (Release 1998) R99 (Release 1999) Rel-4 (Release 4) Rel-5 (Release 5) Rel-6 (Release 6)

Reason for change:	Creation of Multiple Tunnels establishment procedure is not mentioned in the specification. Multiple tunnels to the same PDG which serves different W-APNs are needed as when the UE wants to access different services simultaneously. Procedure for multiple tunnels establishment using IKEv2 is defined in this CR.
Summary of change:	Add feature on multiple tunnels establishment procedure to the same PDG to access different services.
Consequences if not approved:	No method defined to initiate and establish multiple tunnels with the same PDG for different W-APN.

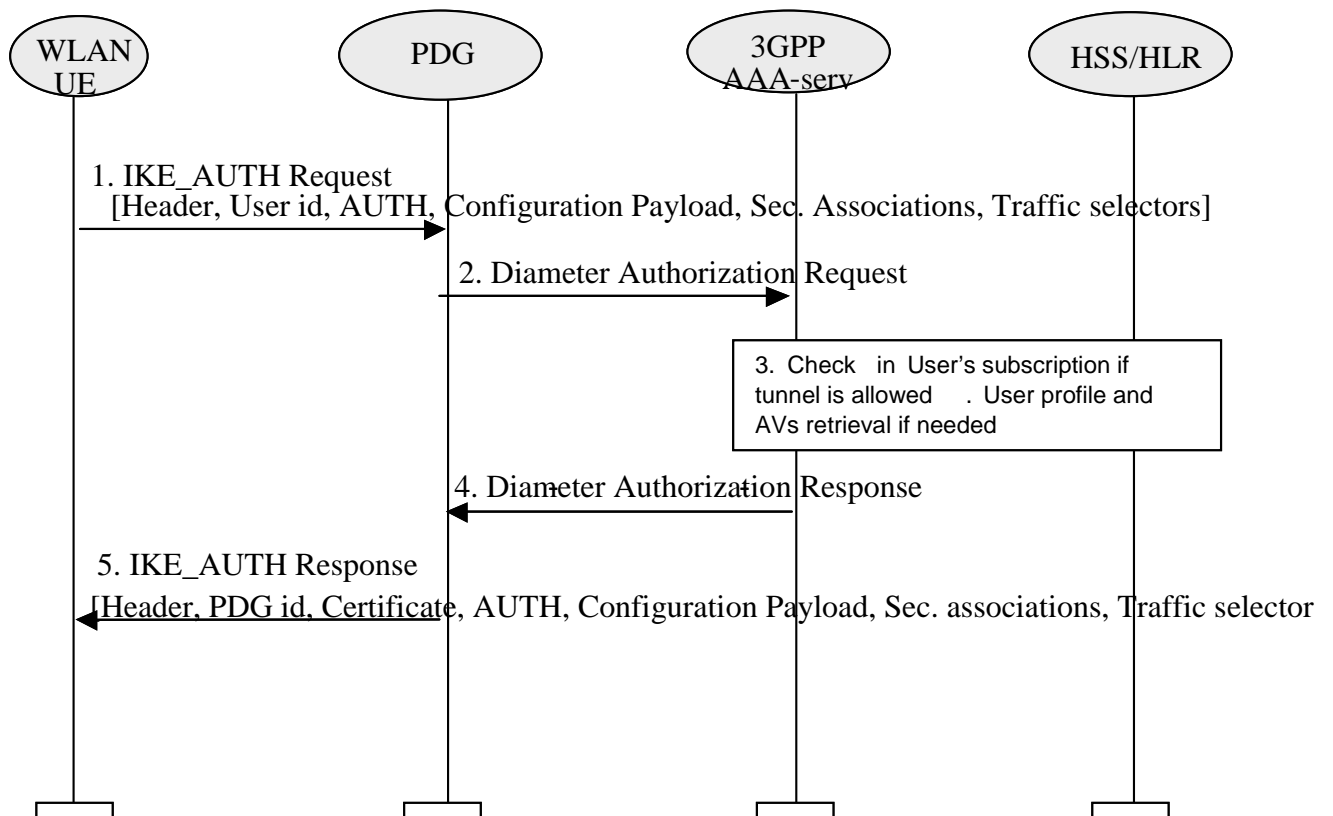
Clauses affected:	6.1.5.4						
Other specs Affected:	<table border="1" style="display: inline-table; border-collapse: collapse;"> <tr> <td style="padding: 2px 5px;">Y</td> <td style="padding: 2px 5px;">N</td> </tr> <tr> <td style="text-align: center; padding: 2px 5px;">X</td> <td style="padding: 2px 5px;"></td> </tr> </table>	Y	N	X		Other core specifications	
	Y	N					
	X						
X	Test specifications						
X	O&M Specifications						
Other comments:							

*** BEGIN SET OF CHANGES ***

6.1.5.4 Multiple Tunnels establishment procedure with the same PDG

The WLAN UE shall initiate multiple tunnels to the same PDG for different W-APN if the same PDG offers different services. During the subsequent tunnel establishment procedure to the same PDG,

1. WLAN UE shall use the latest MSK as input to generate the AUTH parameter to authenticate the IKE_SA_INIT Request message transmitted during the first tunnel establishment procedure. WLAN UE then sends the IKE_AUTH request including above generated AUTH payload, the W-APN in the IDr payload and CFG_Request within the Configurable payload to obtain a remote IP address.
2. PDG sends authentication and authorisation request to the AAA server for the requested W-APN access.
3. The AAA server shall fetch the user profile and authentication vectors from HSS/HLR (if these parameters are not available in the AAA server) and checks in user's subscription if he/she is authorized to establish the tunnel.
4. AAA server sends the Diameter authorization response, to the PDG indicating user is authorized to establish the tunnel according to the subscription and includes the latest key materials.
5. The PDG verifies the AUTH parameter using the latest MSK obtained from the AAA server. The PDG generates the AUTH parameter using Public key signature as input to authenticate the IKE_SA_INIT response message transmitted during the first tunnel establishment. PDG sends the IKE_AUTH RESPONSE including the generated AUTH payload, assigned remote IP address in the configurable payload and certificate. It completes the negotiation of the child security association as well.



*** END SET OF CHANGES ***