

CHANGE REQUEST

⌘ **33.102 CR 190** ⌘ rev **-** ⌘ Current version: **6.2.0** ⌘

For **HELP** on using this form, see bottom of this page or look at the pop-up text over the ⌘ symbols.

Proposed change affects: UICC apps ME Radio Access Network Core Network

Title:	⌘ Correction of TMUI to TMSI in a figure		
Source:	⌘ CCSA/ZTE Corporation		
Work item code:	⌘ SEC1	Date:	⌘ 15/10/2004
Category:	⌘ D	Release:	⌘ Rel-6
	Use <u>one</u> of the following categories: F (correction) A (corresponds to a correction in an earlier release) B (addition of feature), C (functional modification of feature) D (editorial modification) Detailed explanations of the above categories can be found in 3GPP TR 21.900 .		Use <u>one</u> of the following releases: Ph2 (GSM Phase 2) R96 (Release 1996) R97 (Release 1997) R98 (Release 1998) R99 (Release 1999) Rel-4 (Release 4) Rel-5 (Release 5) Rel-6 (Release 6) Rel-7 (Release 7)

Reason for change:	⌘ In Figure 3, "TMUI" is misspelled, it should be TMSI.
Summary of change:	⌘ Correction TMUI to TMSI.
Consequences if not approved:	⌘ Spelling mistake.

Clauses affected:	⌘ 6.1.2										
Other specs affected:	<table border="1" style="display: inline-table; border-collapse: collapse;"> <tr> <td style="width: 20px; text-align: center;">Y</td> <td style="width: 20px; text-align: center;">N</td> </tr> <tr> <td style="text-align: center;"> </td> <td style="text-align: center;">X</td> </tr> <tr> <td style="text-align: center;"> </td> <td style="text-align: center;">X</td> </tr> <tr> <td style="text-align: center;"> </td> <td style="text-align: center;">X</td> </tr> </table>	Y	N		X		X		X	Other core specifications Test specifications O&M Specifications	⌘
	Y	N									
		X									
	X										
	X										
Other comments:	⌘										

*** BEGIN SET OF CHANGES ***

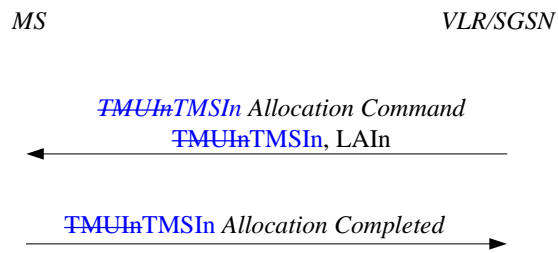


Figure 3, TMSI Allocation

***END SET OF CHANGES ***