

**TSG-RAN Working Group 1 meeting #19  
Las Vegas, U.S.A, February 27-March 2, 2000**

*TSGR1#19(01)0428*

**Agenda Item:** AH22  
**Source:** Samsung  
**Title:** Revision of TR25.840 “Terminal Power Saving Features” to version 2.3.0  
**Document for:** Discussion and Approval

---

This revised TR 25.840 v2.3.0 includes some changes based on the comments raised during RAN WG1 #19 meeting and also includes text proposal on the coexistence of gating and compressed mode.

- Changes based on the comments.
  - ⚡ In section 6.1.8.4, it is stated that a method for coexistence of gating and SSDT is being studied. And the related contribution Tdoc R1-01-0349 is referred.
  - ⚡ In section 8.1.2.3, it is stated that UE battery life improvement depends on UE implementation.
- In section 6.1.8.2, text proposal for coexistence of gating and compressed mode (R1-01-0398) is included.
- At the end of section 8.1.2.2.2, impact of compressed mode on UE battery life improvement is described as follows:
  - ⚡ If compressed mode is activated, UE battery life improvement will decrease depending on the ratio of embedded compressed mode frames duration over UE turn-on duration, since gating is temporarily suspended during embedded compressed mode frames.

# 3G TR 25.840 V2.3.0 (2001-2)

---

*Technical Report*

## **3rd Generation Partnership Project; Technical Specification Group Radio Access Network; Terminal Power Saving Features (Release 4)**



The present document has been developed within the 3<sup>rd</sup> Generation Partnership Project (3GPP™) and may be further elaborated for the purposes of 3GPP

The present document has not been subject to any approval process by the 3GPP Organisational Partners and shall not be implemented. This Specification is provided for future development work within 3GPP only. The Organisational Partners accept no liability for any use of this Specification Specifications and reports for implementation of the 3GPP™ system should be obtained via the 3GPP Organisational Partners' Publications Offices.

---

Keywords

---

<keyword[, keyword]>

**3GPP**

Postal address

---

3GPP support office address

---

650 Route des Lucioles - Sophia Antipolis  
Valbonne - FRANCE  
Tel.: +33 4 92 94 42 00 Fax: +33 4 93 65 47 16

Internet

---

<http://www.3gpp.org>

---

**Copyright Notification**

---

No part may be reproduced except as authorized by written permission.  
The copyright and the foregoing restriction extend to reproduction in all media.

© 2000, 3GPP Organizational Partners (ARIB, CWTS, ETSI, T1, TTA, TTC).  
All rights reserved.

---

# Contents

Foreword.....	6
1 Scope.....	7
2 References.....	7
3 Abbreviations .....	7
4 Background and Introduction.....	7
5 Requirements to the Solution .....	8
5.1 Level of Changes with respect to Release 99 .....	8
5.1.1 Gated DPCCH Transmission Scheme in FDD.....	8
5.1.1.1 Required Changes in UE.....	8
5.1.1.2 Required Changes in Node B .....	8
5.2 Expected Gain with respect to Release 99 .....	8
5.2.1 Gated DPCCH Transmission Scheme in FDD.....	8
5.2.1.1 Expected Gains in UE Side .....	8
5.2.1.2 Expected Gains in Network Side .....	8
6 Terminal Power Saving Features.....	8
6.1 Gated DPCCH Transmission Scheme in FDD .....	8
6.1.1 Related Parameters.....	9
6.1.2 Initiation and Termination Indication of Gated DPCCH Transmission .....	9
6.1.3 RX gating concept.....	9
6.1.3.1 Handover measurements during RX gating.....	10
6.1.4 Operation in Gated DPCCH Transmission.....	10
6.1.4.1 Basic Gating Period.....	10
6.1.4.1.1 Uplink and Downlink Gating.....	10
6.1.4.1.2 Downlink Only Gating.....	10
6.1.4.2 Embedded Data Period .....	14
6.1.5 Detection of DPDCH frame during Gating .....	14
6.1.6 DPCCH Switch-On Time Slot.....	14
6.1.6.1 Downlink DPCCH Switch-On Time Slot.....	14
6.1.6.2 Uplink DPCCH Switch-On Time Slot .....	15
6.1.6.3 Reference Pattern .....	16
6.1.7 Power Control.....	16
6.1.7.1 Power Control Parameters.....	16
6.1.7.2 Power Control Procedure .....	17
6.1.7.2.1 Uplink and Downlink Gated DPCCH Transmission.....	17
6.1.7.2.2 Downlink Only Gated DPCCH Transmission.....	17
6.1.8 Operation with other Features.....	18
6.1.8.1 Transmit diversity.....	18
6.1.8.1.1 Open Loop Transmit Diversity.....	18
6.1.8.1.2 Closed Loop Transmit Diversity.....	18
6.1.8.2 Compressed mode.....	18
6.1.8.3 Soft Handover.....	19
6.1.8.4 SSdT.....	19
7 Impacts to WGs .....	19
7.1 Gated DPCCH Transmission Scheme.....	20
7.1.1 WG1 .....	20
7.1.1.1 Changes needed in the transport channel multiplexing chains in TS 25.212.....	20
7.1.1.1.1 Physical channel mapping.....	20
7.1.1.1.2 2 <sup>nd</sup> Insertion of DTX indication bits in downlink .....	20
7.1.1.1.3 Rate matching in uplink.....	20
7.1.2 WG2.....	21
7.1.3 WG3.....	21

7.1.4	WG4.....	21
7.1.4.1	Impact on TS 25.101.....	21
8	Performance.....	22
8.1	Gated DPCCH Transmission Scheme.....	22
8.1.1	Uplink Interference Reduction Gain [3].....	22
8.1.1.1	Link level simulation.....	22
8.1.1.1.1	Simulation parameters.....	22
8.1.1.1.2	Simulation results.....	23
8.1.1.2	Uplink Interference Reduction Gain.....	24
8.1.1.3	Conclusion.....	26
8.1.2	UE Battery Life Enhancement [4].....	26
8.1.2.1	Assumptions and models used in battery life calculations.....	26
8.1.2.1.1	Packet model.....	26
8.1.2.1.2	Assumptions in UE battery life calculations with tx only gating.....	28
8.1.2.1.3	Assumptions in UE battery life calculations with tx and rx gating.....	28
8.1.2.2	UE battery life improvement calculations.....	29
8.1.2.2.1	UE battery life improvement calculations with tx only gating.....	29
8.1.2.2.2	UE battery life improvement calculations with tx and rx gating.....	29
8.1.2.3	Conclusion.....	30
9	Backward Compatibility.....	30
<b>Annex A: Change history.....</b>		<b>32</b>
<b>Annex B: Information of rapporteur for 3G TR 25.840.....</b>		<b>32</b>

---

# Foreword

This Technical Specification has been produced by the 3<sup>rd</sup> Generation Partnership Project (3GPP).

The contents of the present document are subject to continuing work within the TSG and may change following formal TSG approval. Should the TSG modify the contents of the present document, it will be re-released by the TSG with an identifying change of release date and an increase in version number as follows:

Version x.y.z

where:

- x the first digit:
  - 1 presented to TSG for information;
  - 2 presented to TSG for approval;
  - 3 or greater indicates TSG approved document under change control.
- y the second digit is incremented for all changes of substance, i.e. technical enhancements, corrections, updates, etc.
- z the third digit is incremented when editorial only changes have been incorporated in the document.

---

# 1 Scope

The present document is the Technical Report of the Release 4 work item “Terminal Power Saving Features”.

---

# 2 References

The following documents contain provisions which, through reference in this text, constitute provisions of the present document.

?? References are either specific (identified by date of publication, edition number, version number, etc.) or non-specific.

?? For a specific reference, subsequent revisions do not apply.

?? For a non-specific reference, the latest version applies.

[<seq>] <doctype> <#>[ ([up to and including]{yyyy[-mm]}V<a[.b[.c]]>}{onwards}]]: "<Title>".

- [1] 3GPP TS 25.214: “Physical Layer Procedures (FDD)”.
- [2] 3GPP TR 25.938: “Terminal Power Saving Features (Iur/Iub aspects)”.
- [3] R1-00-1069, “Revised uplink interference reduction gain of gated DPCCH transmission”, Samsung
- [4] R1-00-1029, “Clarification of UE battery life calculations”, Nokia
- [5] R1-00-0686, “Discussion paper on DPCCH gating benefits”, Nokia
- [6] R1-00-0856, “UE battery life improvement with DPCCH gating”, Nokia
- [7] R1-00-1079, “Proposal of using both tx and rx gating”, Nokia
- [8] R1-01-0349, “Modification of SSDT operation to support gated DPCCH transmission in soft handover region with SSDT activated”, Samsung and Nokia

---

# 3 Abbreviations

For the purposes of the present document, the following abbreviations apply:

CFN	Connection Frame Number
DPCCH	Dedicated Physical Control Channel
DPDCH	Dedicated Physical Data Channel
DPCH	Dedicated Physical Channel
DSCH	Downlink Shared Channel
PDSCH	Physical Downlink Shared Channel

---

# 4 Background and Introduction

Battery life is an important resource in UE side but there’s few explicit features dedicated to UE battery saving in Release 99 specification. In order to enhance the UE battery life with respect to Release 99, terminal power saving feature is under discussion for Release 4 work item. In this technical report, the requirements and detail solutions are described.

---

## 5 Requirements to the Solution

This section describes the requirements to the solution of terminal power saving feature. It includes the level of changes and expected gains with respect to Release 99.

### 5.1 Level of Changes with respect to Release 99

#### 5.1.1 Gated DPCCH Transmission Scheme in FDD

Detail parameters and procedure of gated DPCCH transmission (hereafter, called gating except for the section title) is covered in subclause 6.1.

##### 5.1.1.1 Required Changes in UE

When a UE supports gating, the UE should have a capability of determining turn-on and turn-off time slot of uplink and/or downlink for transmission and reception. In gating, the uplink power should be adjusted based on the power control command in latest downlink turned-on time slot.

##### 5.1.1.2 Required Changes in Node B

When a Node B supports gating, Node B should be able to determine uplink and/or downlink turn-on and turn-off time slot for transmission and reception. In gating, the downlink power should be adjusted based on the power control command in latest uplink turned-on time slot.

### 5.2 Expected Gain with respect to Release 99

#### 5.2.1 Gated DPCCH Transmission Scheme in FDD

##### 5.2.1.1 Expected Gains in UE Side

In Release 99, UE battery life was not considered explicitly as a requirement to the specification. With gating, UE battery life can be extended with respect to Release 99 by turning off the transmitter intermittently, and also, if desired, by utilising the possibility to turn off the receiver, if 'RX gating DRX cycle' is defined to be greater than one.

##### 5.2.1.2 Expected Gains in Network Side

By using uplink gating, the interference in uplink can be reduced because the transmission rate is reduced. Similarly, by using downlink gating, the interference in downlink can be reduced because the transmission rate is reduced. The reduction in interference level in uplink and downlink can be converted to the increased uplink and downlink capacity.

---

## 6 Terminal Power Saving Features

In this section, the solutions for the terminal power saving features are described.

### 6.1 Gated DPCCH Transmission Scheme in FDD

Gating is basically reduced power control rate operation to get power saving and interference reduction by turning off transmission intermittently. Gating can be applied when UTRAN and UE support gating, DSCH and associated DPCH in downlink and DPCH in uplink are set-up between UTRAN and UE, but there is no data to transmit on both uplink and downlink for a while. UTRAN can initiate the gating by higher layer signalling. UTRAN can terminate the gating by higher layer signalling. Once gating is initiated data with restricted TFCS can be transmitted on downlink DPDCH that is associated with DSCH as well as uplink DPDCH, without terminating gating.



There are two kinds of period in gating depending on the transmission of data on DPDCH during gating. In Basic Gating Period, both DPCCH and DPDCH will contain transmitted bits only in certain slots of the frame. DPDCH is sent in the same slot as DPCCH due to the fact that CRC is attached to zero length transport block to facilitate adequate performance for outer loop power control. If there is no CRC transmitted, i.e., only DPCCH is transmitted, then the outer loop power control target is considered frozen with basic DPCCH only gating. This period is described in section 6.1.4.1. However, even during gating, non-zero length transport block can be transmitted on DPDCH without terminating the gating exceptionally for the data with restricted TFCS. This Embedded Data Period is described in section 6.1.4.2.

In addition to this, the network signals to the UE the 'RX gating DRX cycle', which defines in which frames transmission of non-zero length transport block can start again in downlink during gating. The concept of RX gating and parameter 'RX gating DRX cycle' is described in section 6.1.3.

### 6.1.1 Related Parameters

When the call is setup, UTRAN and UE negotiate the gating capability and parameters. The parameters controlling the gating operation are:

**Table 1. Gating Parameters**

Gating Rate	1	1/3	1/5
Gating Mode	Downlink Only		Uplink and Downlink
TFCS restrictions in downlink	Given by higher layer signalling		
TFCS restrictions in uplink	Given by higher layer signalling		
RX gating DRX cycle	1	2	4

### 6.1.2 Initiation and Termination Indication of Gated DPCCH Transmission

The gating can be initiated by the UTRAN's command to UE. Gating can be terminated by UE's request followed by UTRAN's permission or by UTRAN's notice to UE. That is, UTRAN determines whether gating is initiated or terminated. Gating is initiated and terminated by higher layer signalling.

### 6.1.3 RX gating concept

During gating, it is possible for the network to allow battery savings for the UE also from the UE RX side. This is achieved so that network will signal 'RX gating DRX cycle' to the UE with the other gating parameters. If 'RX gating DRX cycle' > 1 then it is possible for the UE to turn off the receiver during certain slots in the frames where it is known beforehand that UTRAN is not transmitting neither DPDCH or DPCCH for the UE.

Thus the 'RX gating DRX cycle' defines the cycle, in which frames the transmission of non-zero length transport block can start again during gating.

The definition is that transmission of non-zero length transport block can start again in radio frame CFN, which fulfils both of the two following relations:

- a)  $CFN \bmod (RX \text{ gating DRX cycle}) = 0$ .
- b)  $CFN \bmod F_i = 0$ , where  $F_i$  is the number of radio frames in one TTI of the TrCH<sub>i</sub> carrying a non-zero length transport block [TS25.212].

### 6.1.3.1 Handover measurements during RX gating

During RX gating all the normal handover measurements are to be made, including initial search measurements. However, it is left for WG4 to define, whether for 'RX gating DRX cycle' >1 the measurement period could be different.

## 6.1.4 Operation in Gated DPCCH Transmission

During gating, data with restricted TFCS can be transmitted on DPDCH that is associated with DSCH without terminating the gating. The transmitter operation during Basic Gating Period is covered in section 6.1.4.1. The transmitter operation during Embedded Data Period is covered in section 6.1.4.2. Figure 1 and 2 are the conceptual diagram of “uplink and downlink” and “downlink only” gating, respectively.

### 6.1.4.1 Basic Gating Period

During basic gating period both DPCCH and DPDCH are transmitted in the same slot if CRC is attached to zero length transport block. This is due to the fact that outer loop power control is based on CRC attached to zero length transport block. Thus, the encoded CRC bits will be mapped only to those slots, where DPCCH is also transmitted. Consequently, this requires changes in transport channel multiplexing chains in uplink and downlink. The needed changes in the multiplexing chains are described in section 7.1.1.1. On the other hand, when there is no CRC attached to zero length transport block, i.e., only DPCCH is transmitted, then the outer loop power control target is considered frozen with basic DPCCH only gating.

#### 6.1.4.1.1 Uplink and Downlink Gating

In Basic Gating Period in uplink, the DPCCH is transmitted intermittently together with DPDCH consisting of encoded CRC bits if CRC is attached to zero length transport block and UE shall turn its transmitter on only for the time slots specified in Table 4 and turn its transmitter off in all other time slots.

In Basic Gating Period in downlink, UTRAN shall turn on the transmission of TPC and PILOT field only for the time slots specified in Table 2. And, UTRAN also shall turn on the transmission of DPDCH consisting of encoded CRC bits, if CRC is attached to zero length transport block, only for the time slots in which TPC is transmitted.

In Basic Gating Period, transmission of TFCI in downlink will depend on the CFN and 'RX gating DRX cycle' value. UTRAN shall turn on the transmission of TFCI

- in all the time slots in the radio frames where  $CFN \bmod (RX \text{ gating DRX cycle}) = 0$ .
- in only those time slots specified in Table 2 in the radio frames where  $CFN \bmod (RX \text{ gating DRX cycle}) \neq 0$ .

UTRAN shall turn off the transmission in remaining part.

#### 6.1.4.1.2 Downlink Only Gating

In Basic Gating Period in downlink, UE shall always turn on its transmitter and transmit all the DPCCH fields (PILOT, TFCI, TPC, FBI) together with DPDCH consisting of encoded CRC bits if CRC is attached to zero length transport block. However, because TPC field in uplink can be updated only for the associated downlink turn-on time slot, downlink power control rate is lower than non-gating operation. Similarly, uplink power control rate is also lower than non-gating operation.

In Basic Gating Period, UTRAN shall turn on the transmission of TPC and PILOT only for the time slots specified in Table 2. And, UTRAN also shall turn on the transmission of DPDCH consisting of encoded CRC bits, if CRC is attached to zero length transport block, only for the time slots in which TPC is transmitted.

In Basic Gating Period, transmission of TFCI in downlink will depend on the CFN and 'RX gating DRX cycle' value. UTRAN shall turn on the transmission of TFCI

- in all the time slots in the radio frames where  $CFN \bmod (RX \text{ gating DRX cycle}) = 0$ .

- in only those time slots specified in Table 2 in the radio frames where  $CFN \bmod (RX \text{ gating DRX cycle}) = 0$ .

UTRAN shall turn off the transmission in remaining part.

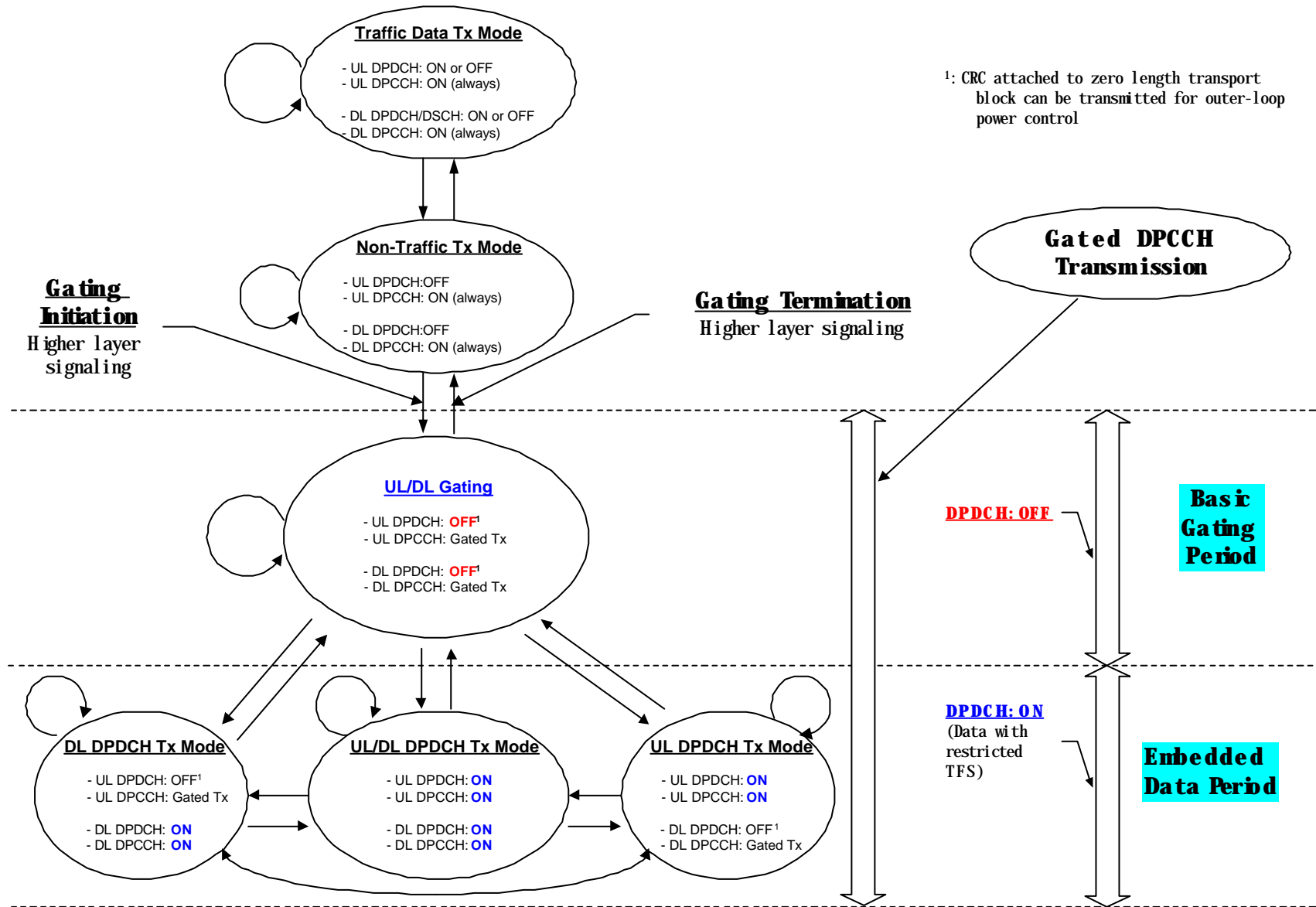


Figure 1. Conceptual Transition Diagram of Gating: Uplink and Downlink Gating

<sup>2</sup>: CRC attached to zero length transport block can be transmitted for outer-loop power control

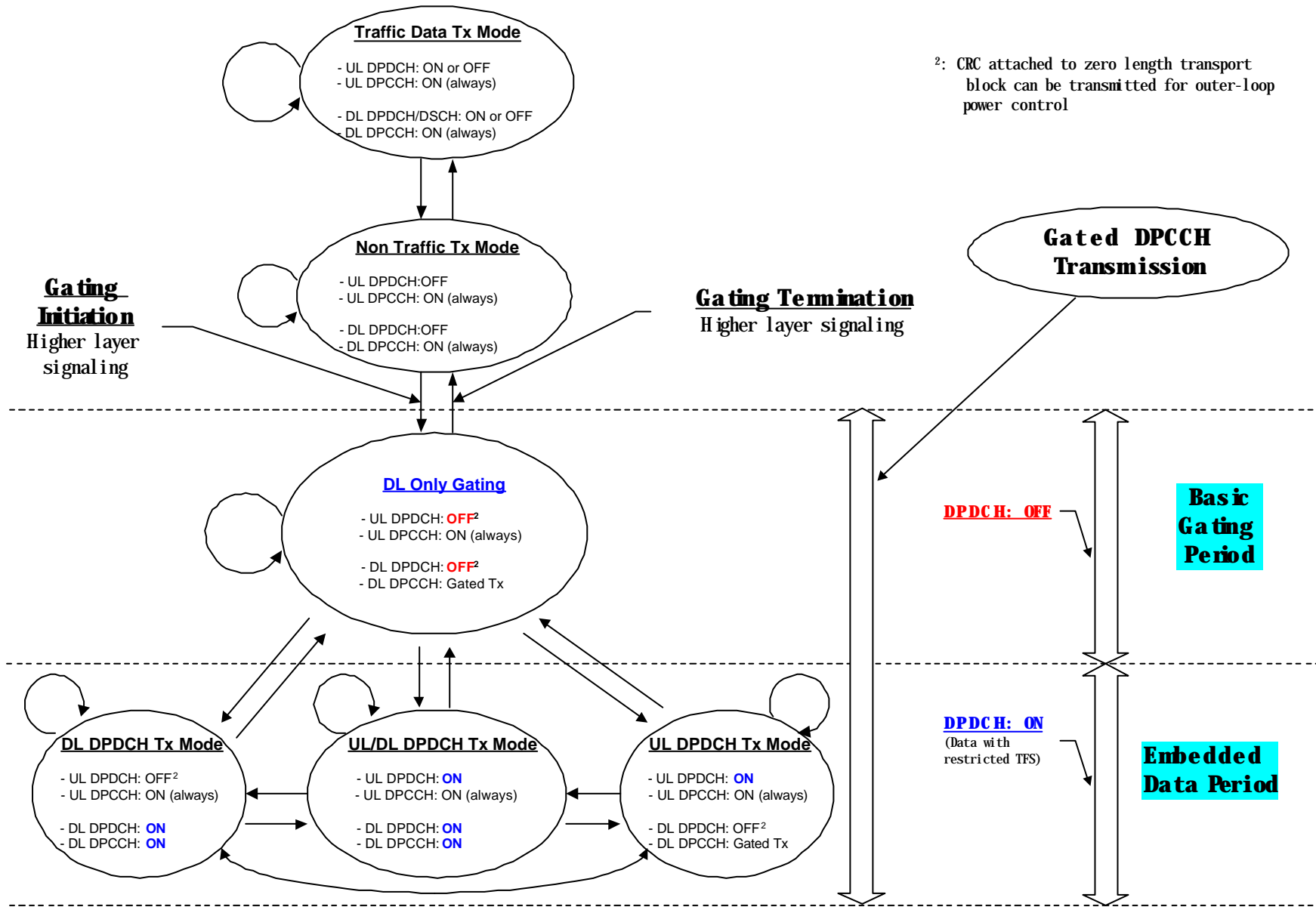


Figure 2. Conceptual Transition Diagram of Gating: Downlink Only Gating

### 6.1.4.2 Embedded Data Period

Once gating is initiated, there are a number of necessity and advantages by permitting transmission of data with restricted TFCS on DPDCH without terminating the gating. First, unnecessary signalling to initiate and terminate gating can be avoided. Second, the average duration of gating can be increased and terminal power consumption and interference can be decreased further. Third, it should be allowed to minimise unnecessary delay in handover procedure. Fourth, it should be allowed to terminate gating by RRC signalling. One possible way to restrict the data rate that is permitted to transmit during gating is limiting TFCS. If there is a possibility to restrict the allowed TFCS during the gating, there will be no problems with capacity or coverage in the cell during the gating, even the required Tx power during the gating is somewhat increased. That is to say, Embedded Data Period does not affect the cell coverage or capacity at all with restricted data rate.

TTI of TrCH carrying data transmitted during Embedded Data Period in downlink may only start in a radio frame where CFN is fulfilling both of two following relations:

- $CFN \bmod (RX \text{ gating DRX cycle}) = 0$ , and
- $CFN \bmod F_i = 0$ , where  $F_i$  is the number of radio frames in one TTI of the TrCH $_i$  carrying the data [TS25.212].

In Embedded Data Period in downlink, UTRAN transmits non-zero length transport block as well as DPCCH. In Embedded Data Period in downlink, UTRAN shall turn its transmission on in all the time slots and transmit all the DPCCH fields (PILOT, TFCI, TPC) as specified in Table 3, but TPC shall be updated only for the time slots specified in Table 2.

In Embedded Data Period in uplink, UE transmits non-zero length transport block as well as DPCCH. In Embedded data period in uplink, UE shall turn its transmitter on in all the time slots and transmit all the DPCCH fields (PILOT, TFCI, TPC, FBI) as specified in Table 5, but TPC shall be updated only at the time slot specified in Table 4.

### 6.1.5 Detection of DPDCH frame during Gating

During gating, data with restricted TFCS can be transmitted in uplink or downlink DPDCH frame, but receiver should detect the transmission of non-zero length transport block because the receiver does not know when the transmission exists. UE can determine the existence of downlink transmission of non-zero length transport block by decoding downlink TFCI in the frames defined by RX gating DRX cycle because downlink TFCI field is always transmitted in the frames defined by RX gating DRX cycle length coefficient. In uplink, UTRAN shall not use TFCI to detect the uplink DPDCH frame, since part of uplink TFCI in a frame may not be transmitted. Since pilot bits are transmitted over the whole frame in which complete TFCI is transmitted, one possible solution for the frame detection in UTRAN is the pilot energy comparison. Pilot energy in the uplink time slots that do not contain pilot during gating is compared to pilot energy in those slots that contains pilot during gating. If this is above threshold, then UTRAN decodes the uplink TFCI and uplink DPDCH frame.

### 6.1.6 DPCCH Switch-On Time Slot

#### 6.1.6.1 Downlink DPCCH Switch-On Time Slot

Table 2 and table 3 show in which time slots UTRAN shall turn on the DPCCH fields in downlink in basic gating period and in embedded data period, respectively. Furthermore, DPDCH carrying encoded CRC bits is mapped to those slots where TPC bits are transmitted if CRC is attached to zero length transport block.

In the table, the CFN of the radio frame is denoted by  $i$ , and the range of the gating group number  $j$  defined in subclause 6.1.6.3 is  $j = 0, 1, 2, 3, 4$  for gating rate  $1/3$ , and  $j = 0, 1, 2$  for gating rate  $1/5$ . The function  $s(i,j)$  used for the reference pattern is defined in subclause 6.1.6.3.

**Table 2. Switched-on Time Slots for downlink DPCCH in basic gating period.**

CFN	Gating Rate	Switched-on Time Slots for downlink DPCCH fields		
		Pilot	TPC	TFCI
CFN mod (RX gating DRX cycle) = 0	1	All slots (0, 1, ..., 14)	All slots (0, 1, ..., 14)	All slots (0, 1, ..., 14)
	1/3	$j \cdot 3 + s(i,j) - 1$	$j \cdot 3 + s(i,j)$	All slots (0, 1, ..., 14)
	1/5	$j \cdot 5 + s(i,j) - 1$	$j \cdot 5 + s(i,j)$	All slots (0, 1, ..., 14)
CFN mod (RX gating DRX cycle) $\neq 0$	1	All slots (0, 1, ..., 14)	All slots (0, 1, ..., 14)	All slots (0, 1, ..., 14)
	1/3	$j \cdot 3 + s(i,j) - 1$	$j \cdot 3 + s(i,j)$	$j \cdot 3 + s(i,j)$
	1/5	$j \cdot 5 + s(i,j) - 1$	$j \cdot 5 + s(i,j)$	$j \cdot 5 + s(i,j)$

**Table 3. Switched-on Time Slots for downlink DPCCH in embedded data period.**

Gating Rate	Switched-on Time Slots for downlink DPCCH fields		
	Pilot	TPC	TFCI
1	All slots (0, 1, ..., 14)	All slots (0, 1, ..., 14)	All slots (0, 1, ..., 14)
1/3	All slots (0, 1, ..., 14)	All slots (0, 1, ..., 14)	All slots (0, 1, ..., 14)
1/5	All slots (0, 1, ..., 14)	All slots (0, 1, ..., 14)	All slots (0, 1, ..., 14)

### 6.1.6.2 Uplink DPCCH Switch-On Time Slot

Table 4 and table 5 show in which time slots UE shall turn on the transmission of DPCCH fields in basic gating period and in embedded data period, respectively. In addition, DPCCH carrying encoded CRC bits is mapped to those slots, where DPCCH is also transmitted if CRC is attached to zero length transport block.

**Table 4. Switched-on Time Slots for uplink DPCCH in basic gating period.**

Gating Rate	Switched-on Time Slots for uplink DPCCH fields Pilot, TFCI, FBI, TPC
1	All slots (0, 1, ..., 14)
1/3	$j \cdot 3 + s(i,j)$
1/5	$j \cdot 5 + s(i,j)$

**Table 5. Switched-on Time Slots for uplink DPCCH in embedded data period.**

Gating Rate	Switched-on Time Slots for uplink DPCCH fields Pilot, TFCI, FBI, TPC
1	All slots (0, 1, ..., 14)
1/3	All slots (0, 1, ..., 14)
1/5	All slots (0, 1, ..., 14)

### 6.1.6.3 Reference Pattern

15 slots of the radio frame are divided into  $N$  gating groups, each group consists of  $S$  consecutive slots. For gating rate  $1/3$ ,  $N = 5$  and  $S = 3$ , and for gating rate  $1/5$ ,  $N = 3$  and  $S = 5$ . Denote the CFN of the current radio frame by  $i$ ,  $i = 0, 1, 2, \dots, 255$ . Further define the 19 bit sequence  $(a_{18}, a_{17}, \dots, a_0) = (1, 0, 0, 1, 0, 1, 1, 1, 0, 1, 1, 0, 0, 1, 0, 1, 1, 0, 1)$ .

**Table 6. Summary of Reference Pattern  $s(i, j)$**

Parameter	Value	
CFN	0, 1, ..., 255 (8bits)	
$a_{18}, a_{17}, \dots, a_0$	1, 0, 0, 1, 0, 1, 1, 1, 0, 1, 1, 0, 0, 1, 0, 1, 1, 0, 1	
gating rate	1/3	1/5
Number of gating group ( $N$ )	5	3
Gating group size ( $S$ )	3	5

For CFN  $i$ ,  $i = 0, 1, 2, \dots, 255$ , concatenated CFN  $C_i = i$ , and gating group  $j$ , the function  $s(i, j)$  is defined as

$$s(i, j) = \begin{cases} (A_j \oplus C_i)_{10} \bmod (S \oplus 1) \oplus 1, & j = 0 \\ (A_j \oplus C_i)_{10} \bmod S, & j = 1, \dots, N \\ \lfloor S \rfloor \oplus 1, & j = N \oplus 1 \end{cases}, \quad i = 0, 1, \dots, 255$$

where  $(X)_{10}$  represents the decimal representation of the number  $X$ , and  $X \oplus Y$  denotes bit-wise modulo 2 addition of the binary representation of the numbers  $X$  and  $Y$ . And  $A_j = \sum_{k=0}^{j-1} 2^{k \cdot S} a_k$ ,  $j=0, 1, \dots, N-1$ .

## 6.1.7 Power Control

### 6.1.7.1 Power Control Parameters

In this subclause, the power control parameters during and after the gating are described.

#### - DPC\_MODE 0

In DPC\_MODE 0, if gating is not initiated, the UE sends a unique TPC command in each slot and the TPC command generated is transmitted in the first available TPC field in the uplink DPCCH.

During gating, both of the transmit time slot and receive time slot in uplink and downlink are not continuous. UE sends a unique TPC command in each switch-on transmit time slot and the TPC command generated based on the switch-on receive time slot is transmitted in the first available TPC field in the uplink DPCCH.

#### - DPC\_MODE 1

In DPC\_MODE 1, if gating is not initiated, the UE repeats the same TPC command over 3 slots and the new TPC command is transmitted such that there is a new command at the beginning of the frame.

During gating, DPC\_MODE 1 cannot be used because the transmission of DPCCH field is not continuous. One possible solution is that during gating, DPC\_MODE 0 is used instead of DPC\_MODE 1 without explicit signalling.

#### - Algorithm 1

In Algorithm 1, if gating is not initiated, UE shall derive a TPC\_cmd based on the TPC command(s) received in each slot.

During gating, the UE derives a unique TPC command in each switch-on downlink time slot and adjust its transmission power in the first available switch-on transmit time slot.

#### - Algorithm 2



In Algorithm 2, if gating is not initiated, UE shall process received TPC commands on a 5-slot cycle. It emulates smaller step sizes than the minimum power control step specified in subclause 5.1.2.2.1 of [1], or to turn off uplink power control by transmitting an alternating series of TPC commands.

During gating, Algorithm 2 cannot be used because the downlink transmission of DPCCH field is not continuous. One possible solution is that during gating, Algorithm 1 is used instead of Algorithm 2 without explicit signalling.

When gating is initiated, the power control parameters are changed without any explicit signalling as described above. The original power control parameters, which had been used before gating was initiated, are resumed without explicit signalling after termination of gating.

## 6.1.7.2 Power Control Procedure

In this subclause, the power control procedure is described.

### 6.1.7.2.1 Uplink and Downlink Gated DPCCH Transmission

In the case that the gating is enabled for both uplink and downlink, the power control operations are as follows.

#### **Uplink transmit power adjustment**

UE shall adjust the transmit power in switched-on time slot in response to the latest updated downlink TPC commands. In the case of embedded data period in uplink, the uplink transmit power shall remain constant until the next updated downlink TPC commands are received. The change in uplink transmit power shall take place immediately before the start of the pilot field on the uplink DPCCH.

#### **Uplink TPC generation and transmission**

UE shall generate the uplink TPC command based on the downlink switched-on time slot that is transmitted with the latest updated transmit power, and shall transmit the new TPC command on the first available uplink switched-on time slot that is assigned for transmitting updated TPC command. In the case of embedded data period in uplink, the newly generated TPC command is repeatedly transmitted in the uplink switched-on time slots before the next uplink switched-on time slot that is assigned for transmitting updated TPC command.

#### **Downlink transmit power adjustment**

UTRAN shall adjust the transmit power in switched-on time slot in response to the latest updated uplink TPC command. In the case of embedded data period in downlink, the downlink transmit power shall remain constant until the next updated uplink TPC command is received. The change in downlink transmit power shall take place immediately before the start of the pilot field on the downlink DPCCH.

#### **Downlink TPC generation and transmission**

UTRAN shall generate the downlink TPC command based on the uplink switched-on time slot that is transmitted with the latest updated transmit power, and shall transmit the new TPC command on the first available downlink switched-on time slot that is assigned for transmitting updated TPC command. In the case of embedded data period in downlink, the newly generated TPC command is repeatedly transmitted in the downlink switched-on time slots before the next downlink switched-on time slot that is assigned for transmitting updated TPC command.

### 6.1.7.2.2 Downlink Only Gated DPCCH Transmission

In the case that the gating is enabled only for the downlink, then the power control operations are as follows.

#### **Uplink transmit power adjustment**

UE shall adjust the transmit power in response to the latest updated downlink TPC commands. And the uplink transmit power shall remain constant until next updated downlink TPC command is received. The change in uplink transmit power shall take place immediately before the start of the pilot field on the uplink time slot.

#### **Uplink TPC generation and transmission**

UE shall generate an uplink TPC command based on the downlink switched-on time slot that is transmitted with the latest updated transmit power. And the UE shall transmit the newly generated TPC command repeatedly before receiving the first downlink switched-on time slot that contains the next updated downlink TPC command.

#### **Downlink transmit power adjustment**

UTRAN shall adjust the transmit power in switched-on time slot in response to the latest updated uplink TPC command. In the case of embedded data period in downlink, the downlink transmit power shall remain constant until the next updated uplink TPC command is received. The change in downlink transmit power shall take place immediately before the start of the pilot field on the switched-on downlink time slot

#### **Downlink TPC generation and transmission**

UTRAN shall generate the TPC command based on the uplink time slot that is transmitted with the latest updated transmit power, and shall transmit the new TPC command on the first available downlink switched-on time slot that is assigned for transmitting updated TPC command. In the case of embedded data period in downlink, the newly generated TPC command is repeatedly transmitted in the downlink switched-on time slots before the next downlink switched-on time slot that is assigned for transmitting updated TPC command.

### 6.1.8 Operation with other Features

In this subclause, the required changes in operation of other features when the features are used with gating are investigated.

#### 6.1.8.1 Transmit diversity

##### 6.1.8.1.1 Open Loop Transmit Diversity

Since STTD encoding is performed for each time slot unit, there does not exist the case that four consecutive bits overlap a slot border. Thus, there's no impact by gating. For the convenience, STTD encoding of DPDCH described in TS 25.211 is summarized as follows:

- The diversity antenna pilot bit pattern is obtained by STTD encoding only the pilot bits except the case that  $N_{\text{pilot}}=2$ .
- For  $N_{\text{pilot}} = 2$ , the diversity antenna pilot pattern is obtained by STTD encoding the two pilot bits with the last two bits (data or DTX) of the second data field (data2) of the slot.
- STTD encoding for the DPDCH, TPC, and TFCI fields is done as described in subclause 5.3.1.1.1 of TS 25.211.

The STTD encoding operation described above clearly reveals that there is no impact by gating.

##### 6.1.8.1.2 Closed Loop Transmit Diversity

When the gating is turned on during closed loop transmit diversity, gating impacts uplink feedback signalling. For closed loop transmit diversity Mode 1, it will work without changes. For closed loop transmit diversity Mode 2, one possible solution is that during gating, Mode 1 is used instead of Mode 2 without explicit signalling. If the Mode 1 is used instead of Mode 2 during gating, the Tx diversity mode should return to Mode 2 without explicit signalling when the gating is terminated.

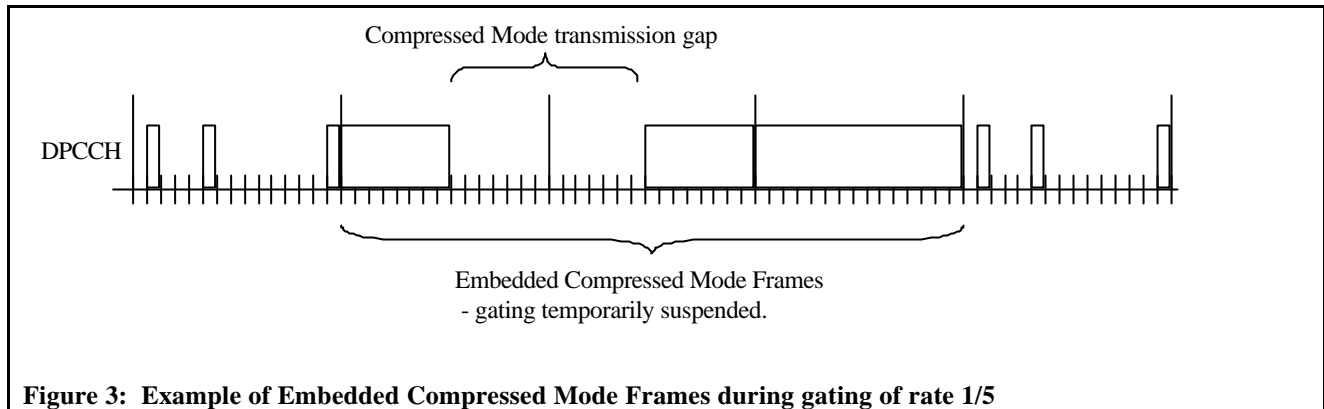
#### 6.1.8.2 Compressed mode

During gating, compressed mode transmission gap pattern sequences may be active, as signalled by higher layers. If this is the case, certain frames are known as Embedded Compressed Mode Frames. An Embedded Compressed Mode Frame is any frame which contains all or part of an uplink or downlink compressed mode transmission gap, and any frame which immediately follows a frame containing all or part of an uplink or downlink compressed mode transmission gap, as shown in the example in Figure3.

The following actions shall be taken in each timeslot in each Embedded Compressed Mode Frame:

- ?? the UE shall turn on its transmitter except during uplink compressed mode transmission gaps;

- ?? the UE shall receive the downlink DPCCH except during downlink compressed mode transmission gaps;
- ?? the UTRAN shall turn on its transmitter except during downlink compressed mode transmission gaps;
- ?? both uplink and downlink TPC fields shall be updated except during uplink or downlink compressed mode transmission gaps.



Complete TFCI information can be transmitted in both the uplink and downlink during the Embedded Compressed Mode Frames. The UTRAN may therefore use the uplink TFCI to detect the presence of uplink Embedded Data Periods during Embedded Compressed Mode Frames. The UE may also use the downlink TFCI to detect the existence of downlink Embedded Data Periods during Embedded Compressed Mode Frames.

It is not necessary for higher layers to terminate gating before the start of a compressed mode transmission gap pattern sequence. The advantages of this are similar to the advantages of the Embedded Data Period which are noted in section 6.1.4.2. Firstly, unnecessary signalling to terminate gating before each transmission gap pattern sequence and to re-initiate gating afterwards is avoided. Secondly, the average duration of gating can be increased and terminal power consumption and interference can be reduced in the non-compressed frames between the transmission gaps in active transmission gap pattern sequences. Thirdly, the timing of inter-frequency and inter-system measurements is not affected.

Embedded Data Periods (see section 6.1.4.2) can be used to transmit reports of the measurements made in compressed mode transmission gaps as required by higher layers.

### 6.1.8.3 Soft Handover

If any of the Node Bs in the Active set do not support gated transmission, gating shall be disabled. In other words, if a new radio link is setup during gating and the Node B of the newly added radio link does not support gating, then the gating shall be terminated.

### 6.1.8.4 SSdT

Gating shall be disabled by higher layer signaling when the soft handover is initiated with SSdT. The termination of gating and the initiation of SSdT can be performed by a single higher layer signaling message. Thus, no additional signalling is required.

On the other hand, a method for coexistence of gating and SSdT is being discussed [8].

## 7 Impacts to WGs

In this subclause, the technical specifications of each WG that may be impacted by each solution for terminal power saving features are listed.

## 7.1 Gated DPCCH Transmission Scheme

### 7.1.1 WG1

TS25.212

#### 7.1.1.1 Changes needed in the transport channel multiplexing chains in TS 25.212

##### 7.1.1.1.1 Physical channel mapping

It is defined in sections 4.2.12.1 and 4.2.12.2, physical channel mapping for uplink and downlink, that during compressed mode, bits are mapped only to certain slots of the frame. Consequently, similar kind of addition is needed for gating, saying that during gating, bits are mapped only to certain slots of the frame. In uplink :

- during basic gating period, the bits are mapped only to those slots, where DPCCH is also transmitted.
- during embedded data period, the bits are mapped to all slots in the frame

In downlink:

- during basic gating period the bits are mapped only to those slots where TPC is also transmitted
- during embedded data period, the bits are mapped to all slots in the frame

Here : basic gating period = frames where only CRCs with zero length TrCH block(s) is (are) transmitted

embedded data period = frames where at least one non-zero length TrCH block is transmitted

This means that during RX gating [5,6], in every Kth frame UE receiver needs to decode the TFCI, before it knows that in what slots the bits are mapped to. If TFCI defines that there are only zero length transport blocks in the frame, then UE knows that the bits are mapped to only certain slots of the frame. And if TFCI defines that there is at least one non-zero length transport block in the frame, then UE knows that the bits are mapped to all slots in the frame.

The similar procedure is required from Node B in uplink, in every frame. Node B has to use pilot energy comparison to detect whether the frame is in basic gating period or in embedded data period. In embedded data period all the pilot fields exist. If it detects that the frame is in basic gating period, it knows that DPDCH is transmitted in the same slots as DPCCH. If it detects that the frame is in embedded data period, then it decodes the TFCI, and decodes the data from all slots in the frame.

##### 7.1.1.1.2 2<sup>nd</sup> Insertion of DTX indication bits in downlink

Presently it is defined in section 4.2.9.2. "2<sup>nd</sup> insertion of DTX indication bits " that:

- S is the number of bits from TrCH multiplexing
- P is the number of PhCHs bits
- R is the number of bits in one radio frame , including DTX indication bits

Required changes:

- 1) In embedded data period, the same definition can be used as before. So no changes are needed.
- 2) During basic gating period, R needs to be replaced by R<sub>gating</sub>, where:
  - R<sub>gating</sub>=R/3 if gating rate=1/3
  - R<sub>gating</sub>=R/5 if gating rate=1/5

##### 7.1.1.1.3 Rate matching in uplink

Presently it is defined in section 4.2.7. "Rate matching" that:

- $N_{data,j}$  is the total number of bits that are available for the CCTrCH in a radio frame with transport format combination j.

Required changes:

1) In embedded data period, the same definition can be used as before. So no changes needed.

2) In basic gating period,  $N_{data,j}$  needs to be replaced by  $N_{data,j}^{gating}$ , where:

- $N_{data,j}^{gating} = N_{data,j} / 3$  if gating rate=1/3

- $N_{data,j}^{gating} = N_{data,j} / 5$  if gating rate=1/5

TS 25.214

TS 25.215

## 7.1.2 WG2

TS 25.301

TS 25.302

TS 25.331

## 7.1.3 WG3

The impacts of gating to WG3 are described in [2].

## 7.1.4 WG4

TS 25.101

### 7.1.4.1 Impact on TS 25.101

In gating, an UE may discontinuously transmit uplink DPCCCH and it impacts the section 6.5 “Transmit On/Off power” of 25.101. There are already several possible TX on/off cases in the section 6.5.2 of 25.101 as follows:

----- Start of original text -----

### 6.5.2 Transmit ON/OFF Time mask

The time mask for transmit ON/OFF defines the ramping time allowed for the UE between transmit OFF power and transmit ON power. Possible ON/OFF scenarios are RACH, CPCH, or UL compressed mode.

----- End of original text -----

Thus, gating also should be added as another possible TX on/off case as follows.

----- Start of text change-----

### 6.5.2 Transmit ON/OFF Time mask

The time mask for transmit ON/OFF defines the ramping time allowed for the UE between transmit OFF power and transmit ON power. Possible ON/OFF scenarios are RACH, CPCH, gated DPCCCH transmission or UL compressed mode.

----- End of text change -----

TS 25.133

## 8 Performance

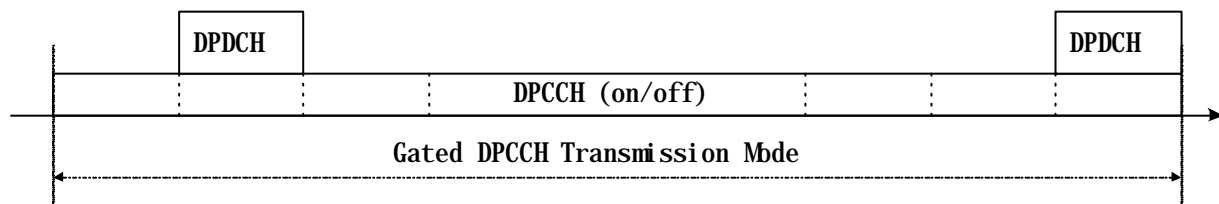
### 8.1 Gated DPCCH Transmission Scheme

#### 8.1.1 Uplink Interference Reduction Gain [3]

In gating, the following transmission cases are possible.

- DPCCH only transmission
- DPDCH and DPCCH transmission

That is, as shown in Figure 3, DPCCH is always transmitted but DPDCH can be transmitted when there's data to transmit during gating mode. (Here, for example, DPDCH transfers data with restricted TFCS such as signalling message that is usually transmitted occasionally. Let "DPDCH frequency" be the probability of transmitting DPDCH during gating mode.)



**Figure 3. DPDCH Transmission during gating**

The average interference reduction gain is defined as:

Average Uplink interference reduction gain

$$= (\text{average transmit power when no gating}) / (\text{average transmit power when gating})$$

Note that the average uplink interference reduction gain is defined as the ratio of the average transmission power. Although the transmit power of DPDCH should be increased to compensate the reduced power control rate, the transmit power can be saved during DPCCH only transmission period. Thus the average interference reduction gain highly depends on the DPDCH frequency, and the results are shown with respect to the DPDCH frequency ranges from 1% to 30%.

Simulation and analysis results show that the average interference reduction gain is 4~6dB if the DPDCH frequency is 1%, 2.0~2.5dB if the DPDCH frequency is 10%. Since the average interference reduction gain is the ratio of average transmit power, the gating provides gain in terms of UE Tx power saving.

##### 8.1.1.1 Link level simulation

###### 8.1.1.1.1 Simulation parameters

The link-level simulation was performed to evaluate the required Eb/No of uplink DPDCH during gating. Note that the performance of the uplink DPDCH depends on the uplink power control rate (downlink TPC rate). More precisely, the

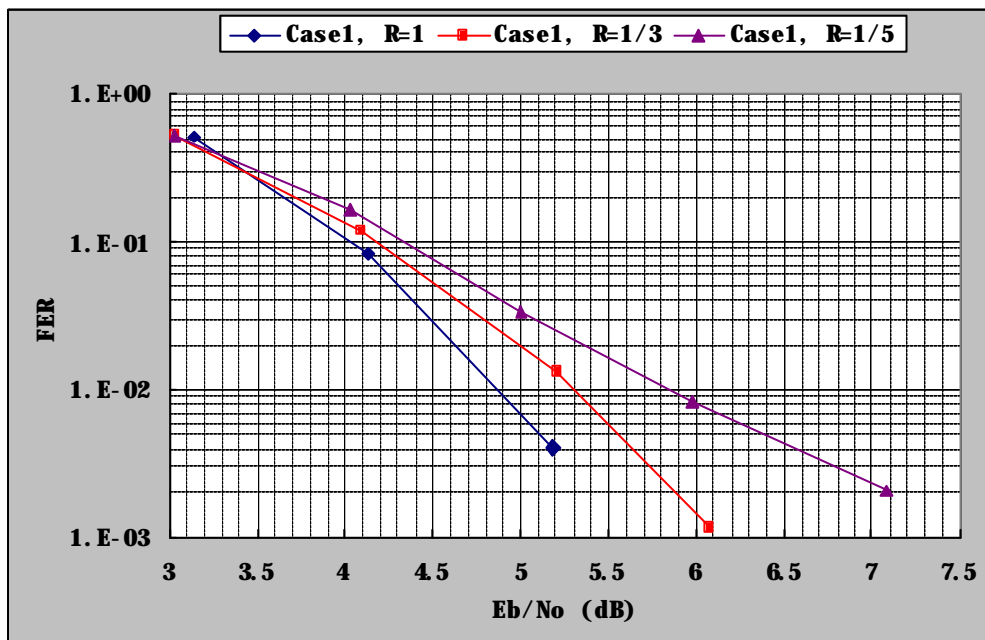
FER of uplink DPDCH is simulated when the downlink TPC is transmitted with rate 1, 1/3, and 1/5. The channel models are CASE1 for 3km/h and CASE3 for 120km/h. The detail simulation parameters are shown in table 7.

**Table 7. Simulation parameters (uplink)**

Carrier frequency		2.0 GHz
Chip rate		3.84 Mcps
Channel bit rate	DPDCH	60 kbps
	DPCCH	15 kbps
Modulation	Data	BPSK
	Spreading	QPSK
Slot structure	DPCCH	Pilot: 6, TPC: 2, TFCI: 2
	DPDCH	Data: 40
Channel model	Multi-path fading	2-path Rayleigh
	Finger	2 fingers
	Receiver antenna diversity	On
	Doppler frequency [Hz]	5.6(3km/h) , 222(120km/h)
DPCCH/DPDCH [dB]		-5dB
Power control	Dynamic range	Unlimited (assume ideal power amplifier)
	Step size	1.0 dB
	Rate	1500Hz(1/1 gating = no gating), 500Hz(1/3 gating), 300Hz(1/5 gating)
	TPC error	4%
Channel estimation		WMSA

#### 8.1.1.1.2 Simulation results

Figure 4 and 5 show the uplink DPDCH FER when the downlink TPC is transmitted with rate 1, 1/3, and 1/5, where R represents gating rate.



**Figure 4. Uplink DPDCH Frame Error Rate with various gating rate and speed (Case 1)**

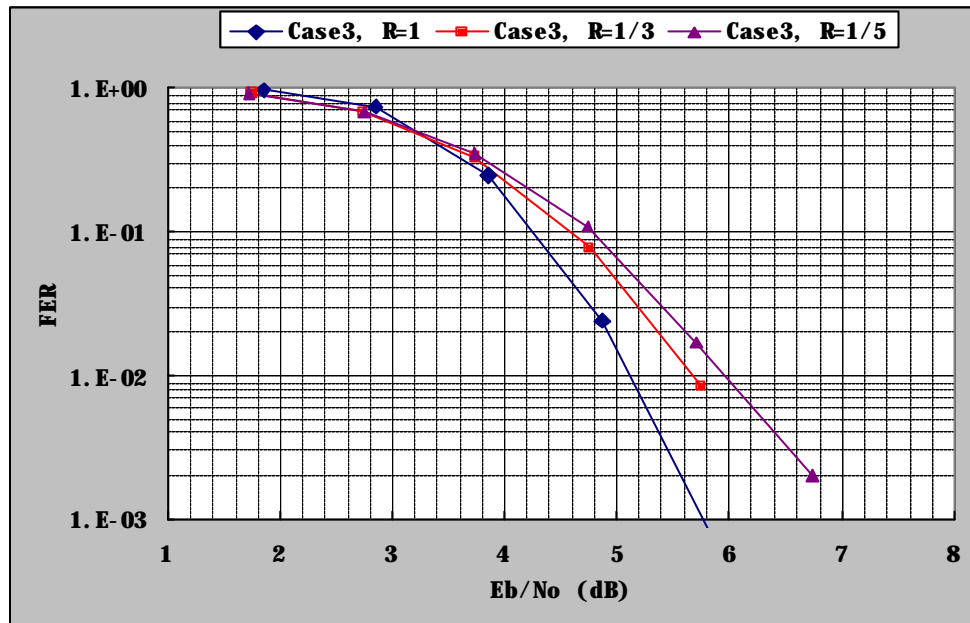


Figure 5. Uplink DPDCH Frame Error Rate with various gating rate and speed (Case 3)

The required transmit Eb/No for the uplink DPDCH to obtain 1% FER is summarised in table 8. In addition, the Eb/No difference compared with gate rate 1 is also given. From the results, we can see that the Eb/No loss by 1/3 rate gating at 3km/h is about 0.42dB, for example. The uplink DPCCH performance loss, which is measured by TPC BER, due to gating is max. 0.5dB for gating rate=1/5.

Table 8. Required Tx Eb/No[dB] to maintain 1% FER

UE speed	Gating Rate		
	1/1	1/3	1/5
Case1(3km/h)	<b>4.88</b>	5.3(+0.42)	5.88(1.0)
Case3(120km/h)	<b>5.1</b>	5.68(0.58)	6.0(0.9)

\* ( ) indicates Eb/No difference compared with 1/1(no gating)

Tx.  $E_b = E_{DPDCH} + E_{DPCCH}$  per one antenna

### 8.1.1.2 Uplink Interference Reduction Gain

In this subsection we analyse the average uplink interference reduction gain in gating based on the link simulation results in subsection 8.1.1.1. The disadvantage of the gating is the increase of the required Eb/No to obtain 1% DPDCH FER. In addition, the transmit power of DPCCH also should be increased due to reduced uplink power control rate. The average uplink interference reduction gain is defined at the beginning of section 8.1.1 and restated for convenience.

Average uplink interference reduction gain

$$= (\text{Average transmit power when no gating}) / (\text{Average transmit power when gating})$$

In order to see the gain, let's assume the following parameters.

F	= DPDCH frequency (%)
R	= Gating rate (1, 1/3, or 1/5)
$P_{DPCCH}$	= Power of DPCCH,
$P_{DPDCH}$	= Power of DPDCH = ?? $P_{DPCCH}$ (??=5dB)
$A_{DPCCH}$	= Additional Eb/No required for DPCCH only transmission (0.5dB)
$A_{DPCH}$	= Additional Eb/No required for DPDCH+DPCCH transmission (Given in table 8)



From the assumed parameters, only DPCCH is transmitted in (1-F)% of time, and both (DPDCH+DPCCH) are transmitted in F% of time. The average uplink interference reduction gain is defined as the ratio of average transmission power as follows.

### Average Uplink Interference Reduction Gain

$$\begin{aligned} & \text{Average uplink interference reduction gain} \\ & = 10 * \log_{10} ( P(\text{no gating})/P(\text{gating})) \end{aligned}$$

where P(no gating) and P(gating) represents the average transmit power when the gating is disabled and enabled, respectively.

### P(no gating)

The average transmit power when the gating is disabled is given by

$$\begin{aligned} P(\text{no gating}) &= (\text{Average transmit power when no gating}) \\ &= (100-F) * P_{\text{DPCCH}} + F * (P_{\text{DPCCH}} + P_{\text{DPDCH}}) \\ &= (100+??F) P_{\text{DPCCH}} \end{aligned}$$

### P(gating)

The average transmit power when the gating is enabled is given by

$$\begin{aligned} P(\text{gating}) &= (\text{Average transmit power during only DPCCH transmission when gating}) \\ &+ (\text{Average transmit power during (DPDCH+DPCCH) transmission when gating}) \end{aligned}$$

During DPCCH only transmission period, the average transmit power is given by

$$\begin{aligned} & (\text{Average transmit power during only DPCCH transmission when gating}) \\ & = (100-F) * P_{\text{DPCCH}} * 10^{(0.1 * A_{\text{DPCCH}})} * R \end{aligned}$$

During both (DPDCH+DPCCH) transmission period, there is  $E_{\text{DPCH}}$  loss, so the required power is

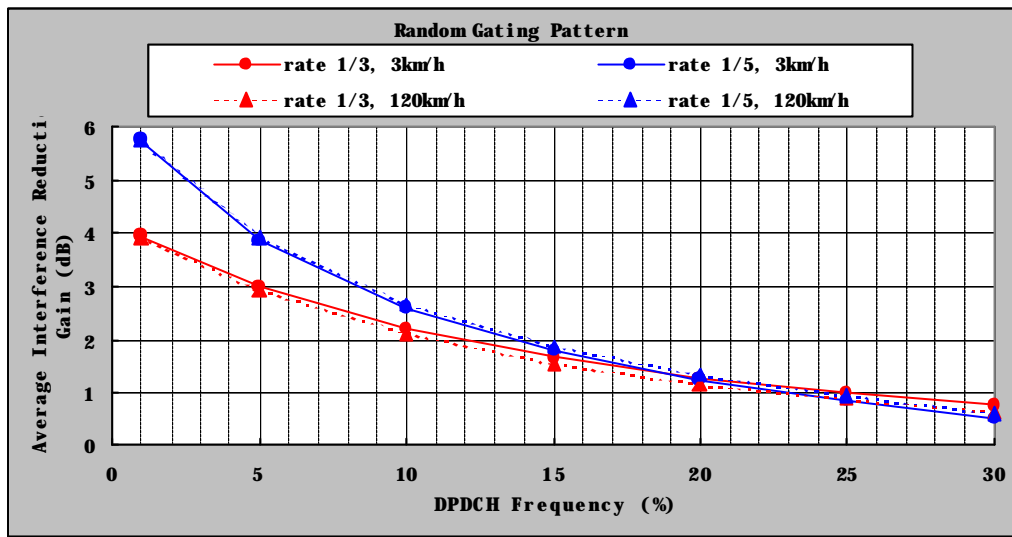
$$\begin{aligned} & (\text{Average transmit power during (DPDCH+DPCCH) transmission when gating}) \\ & = F * (P_{\text{DPCCH}} + P_{\text{DPDCH}}) * 10^{(0.1 * A_{\text{DPCH}})}. \end{aligned}$$

Based on the above method, we calculate the average uplink interference reduction gain for 1% DPDCH frequency as table 9 (F=1).

**Table 9. Uplink interference reduction [dB] (1% DPDCH frequency)**

UE speed	Overall interference reduction gain [dB]	
	1/3	1/5
3km/h	<b>3.94</b>	<b>5.75</b>
120km/h	<b>3.93</b>	<b>5.77</b>

Consequently, in case of 1% DPDCH frequency, the uplink interference reduction gain (~5.77dB) can be achieved by gating in spite of increasing transmission power of DPDCH during gating. The DPDCH frequency has an important role in the uplink interference reduction gain. Figure 6 shows the average uplink interference reduction gain against the DPDCH frequency. From this figure, we can see that more than 2.5dB gain can be achieved when the DPDCH frequency is 10%, and the gain increases as the DPDCH frequency decreases.



**Figure 6. Average uplink interference reduction gain**

8.1.1.3 Conclusion

From the simulation and analysis results, the uplink interference reduction gain is enough to use gating. If the DPDCH frequency is 10%, the interference reduction gain is about 2.5dB, and the gain increases as the DPDCH frequency decreases. Consequently, the gating is beneficial to the interference reduction, that is, the transmit power reduction.

8.1.2 UE Battery Life Enhancement [4]

In this section, to show the advantage in UE battery life provided by gated DPCCH transmission, UE battery life enhancement calculation is described under the assumptions that the compressed mode is not initiated and that all Node Bs in the active set support gated DPCCH transmission.

8.1.2.1 Assumptions and models used in battery life calculations

8.1.2.1.1 Packet model

The same packet model was used as described in [5]. The Figure 7 shows the structure of the packet session, where:

$T_p$  = average duration of one packet call.

$T_{cr\_dch}$  = connection release time for DCH only case.

$T_{cr\_dsch}$  = connection release time for DSCH+DCH case.

One interesting point here is that  $T_{cr\_dsch}$  can be quite large, larger than  $T_{cr\_dch}$ , which means that it can be so long the connection does not have to be released between each packet call. This is because DCH associated with DSCH could use quite high spreading factor, e.g. SF=256. However, it does not make any difference to the battery life calculations. Meaning, that if the simplified assumption is that gap between two packet calls is equal or larger than  $T_{cr\_dch}$  or  $T_{cr\_dsch}$ , then following model, explained below can be used in the battery life calculations.

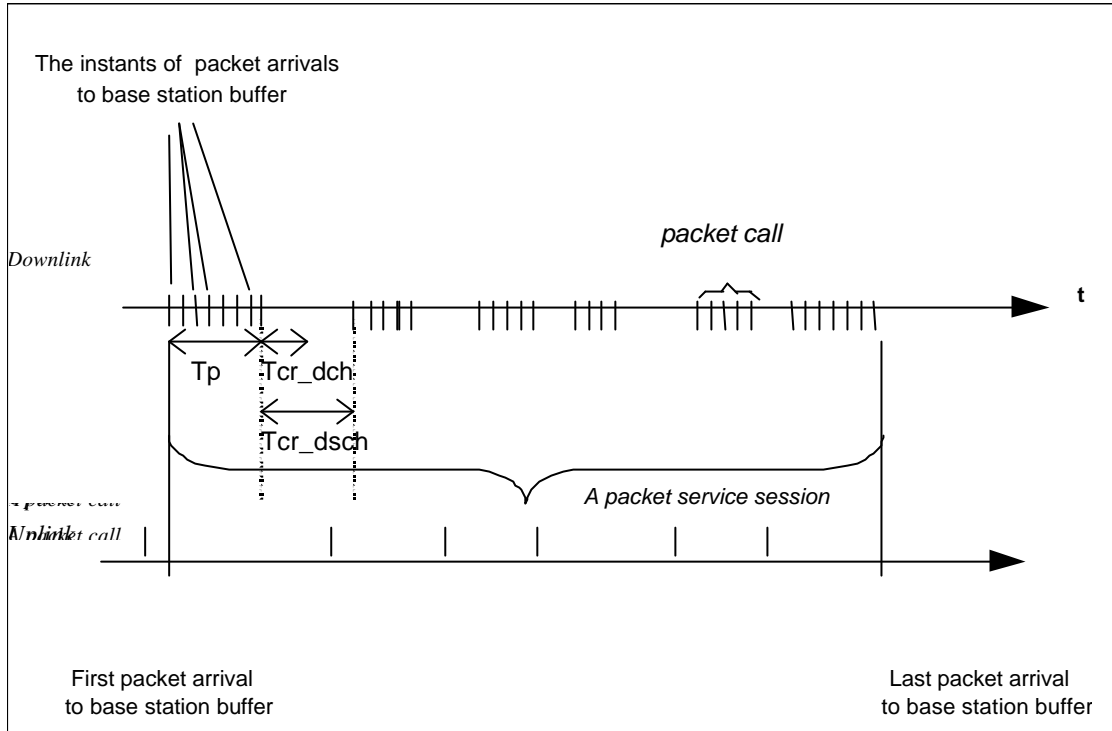


Figure 7. Packet model

Figure 8 shows the timing model, how the gating is assumed to be turned on in the battery calculations. Here  $T_{gat\_on}$  is the time after the last packet when the gating is turned on. Note that  $T_{gat\_on}$  should be larger than the time interval between individual packet bursts within  $T_p$ . Thus the percentage of time that the gating is on during the whole connection is

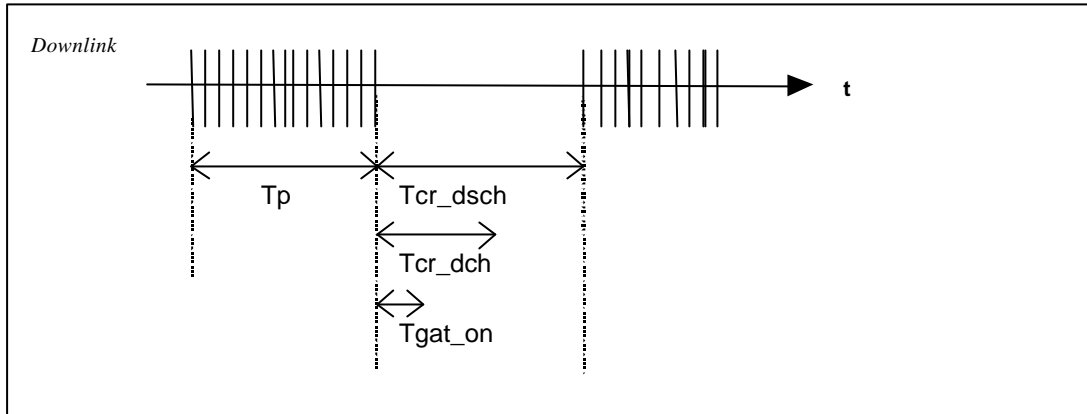
$$\text{For DCH only case: } DPCCH\_gating\_ \% = \frac{T_{cr\_dch} + T_{gat\_on}}{T_p + T_{cr\_dch}}$$

$$\text{For DCH+DSCH case: } DPCCH\_gating\_ \% = \frac{T_{cr\_dsch} + T_{gat\_on}}{T_p + T_{cr\_dsch}}$$

In [5], it was roughly calculated with these equations, that the percentage of time the DPCCH gating could be on, on average:

$$\text{For DCH only case: } DPCCH\_gating\_ \% = 0.30$$

$$\text{For DCH+DSCH case: } DPCCH\_gating\_ \% = 0.66$$



**Figure 8. Timing for turning the gating on.**

**8.1.2.1.2 Assumptions in UE battery life calculations with tx only gating**

Following assumptions were used in the simplified UE battery life calculations in [6].

- 1) First it was assumed what is the percentage of battery consumption of tx side and rx side, respectively, for certain tx power level, when gating is not used. Let's say that with tx power level , txpwr, this results in :
  - tx side consumes N1 mA @ txpwr
  - rx side consumes N2 mA

No specific data rates were assumed here either in uplink or downlink, for simplification. This is because data rate change in downlink was assumed not to affect the battery consumption so much. The continuous decoding is needed anyway in downlink, since the packet transmission can be assumed to restart in any frame and handover measurements are running continuously. If continuous decoding in every frame could be avoided, then we could assume clearly a different figure for rx side battery consumption during gating state, but until then, the same value N2, is assumed for rx side throughout the whole connection.

- 2) Then it was calculated, what is the tx side battery consumption, if tx gating is used. Separate values were calculated for 1/3 gating and 1/5 gating, with the same corresponding tx power level t x pwr. This resulted in following value:
  - tx side consumes N1\_gating mA, during gating @ txpwr

- 3) Finally it was calculated what is the overall battery life improvement:

$$Battery\_life\_improvement \ ? \ \frac{N1 \ ? \ N2}{(1 \ ? \ DPCCH\_gating\_ \% ) \ ? N1 \ ? \ DPCCH\_gating\_ \% \ ? N1\_gating \ ? \ N2}$$

**8.1.2.1.3 Assumptions in UE battery life calculations with tx and rx gating**

Following assumptions have been used in the simplified UE battery life calculations with tx and rx gating.

- 1) First it was assumed what is the percentage of battery consumption of tx side and rx side, respectively, for certain tx power level, when gating is not used. Let's say that with tx power level , txpwr, this results in :
  - tx side consumes N1 mA @ txpwr
  - rx side consumes N2 mA

No specific data rates were assumed here either in uplink or downlink, for simplification.

2) Then it was calculated, what is the tx side battery consumption, if tx gating is used. Separate values were calculated for 1/3 gating and 1/5 gating, with the same corresponding tx power level txpwr. This resulted in following value:

- tx side consumes  $N1_{gating}$  mA, during gating @ txpwr

3) It was also calculated, what is the rx side battery consumption (average battery consumption over K frames), if rx gating is used. Here rx is on the whole frame in every Kth frame. And in the frames in between the rx is on only in every 3<sup>rd</sup> slot or every 5<sup>th</sup> slot, with 1/3 gating or 1/5 gating, respectively. This resulted in following value:

- rx side consumes  $N2_{gating}$  mA, during gating

4) Finally it was calculated what is the overall battery life improvement:

$$\text{Battery\_life\_improvement} = \frac{N1_{gating} - N1_{total\_new}}{N1_{total\_new}}$$

where:

$$N1_{total\_new} = (1 - \text{DPCCH\_gating\_}) * N1 + \text{DPCCH\_gating\_} * N1_{gating}$$

$$N2_{total\_new} = (1 - \text{DPCCH\_gating\_}) * N2 + \text{DPCCH\_gating\_} * N2_{gating}$$

## 8.1.2.2 UE battery life improvement calculations

### 8.1.2.2.1 UE battery life improvement calculations with tx only gating

The battery life improvement calculations from [6] are repeated here once more, for clarification.

Table 10 and 11 show UE battery lifetime improvements for DCH and DCH+DSCH case, for medium range tx pwr level and high tx power level, respectively. Thus the only difference in calculating DCH case and DCH+DSCH case, is the value used for DPCCH\_gating\_ value.

**Table 10. UE battery life improvement due to gating, with medium range tx power level.**

	DPCCH_gating_	Gating rate	UE battery life improvement
DCH	30 %	1/3	8 %
		1/5	13 %
DCH+DSCH	66 %	1/3	21 %
		1/5	34 %

**Table 11. UE battery life improvement due to gating, with maximum tx power level.**

	DPCCH_gating_	Gating rate	UE battery life improvement
DCH	30 %	1/3	10 %
		1/5	16 %
DCH+DSCH	66 %	1/3	26 %
		1/5	44 %

NOTE: Due to the fact that I/Q multiplexing is used in uplink the CRC attachment to zero length transport block will not introduce any deterioration to presented battery life improvement figures.

The results show that DPCCH gating means clear UE battery life improvement in DCH+DSCH case. For DCH only case it is maybe not as sensible to utilise it.

### 8.1.2.2.2 UE battery life improvement calculations with tx and rx gating

Here we show the UE battery life improvement calculations with tx and rx gating, where higher layer scheduling idea has been used, to allow battery savings also in rx side [7]. Values K=1,4 and 8 are used in the calculations, where K defines that rx side has to be on the whole frame in every Kth frame. Note, K=1 gives the same result, as was given in

our previous UE battery improvement calculations, where only tx side improvement could be achieved, since  $K=1$  means that rx side has to be on in every frame.

Thus table 12 and 13 show UE battery lifetime improvements for DCH+DSCH case, with  $DPCCH\_gating\_%=0.66$ , for medium range tx pwr level and high tx power level, respectively. This time we did not calculate the case for DCH only case ( $DPCCH\_gating\_%=0.3$ ), since the main point here is to evaluate, whether rx gating is giving clear enough improvement, or whether tx only gating ( $K=1$  case) is sensible alone.

**Table 12. UE battery life improvement due to tx and rx gating, with medium range tx power level.**

Gating rate	K	UE battery life improvement
1/3	1	21 %
	4	32 %
	8	34 %
1/5	1	34 %
	4	56 %
	8	60 %

**Table 13. UE battery life improvement due to tx and rx gating, with maximum tx power level.**

Gating rate	K	UE battery life improvement
1/3	1	26 %
	4	35 %
	8	37 %
1/5	1	44 %
	4	61 %
	8	65 %

It can be seen that combined tx and rx gating clearly further improves the UE battery life compared to tx only gating.

NOTE: Due to the fact that I/Q multiplexing is used in uplink the CRC attachment to zero length transport block will not introduce any deterioration to presented battery life improvement figures. In addition, in downlink gating the achieved battery saving figures are calculated using the assumption that there is no switching within a slot.

If compressed mode is activated, UE battery life improvement will decrease depending on the ratio of embedded compressed mode frames duration over UE turn-on duration, since gating is temporarily suspended during embedded compressed mode frames. 8.1.2.3 Conclusion

With the help of DCH+DSCH concept, several packet calls in one packet session can be transmitted during the same connection without connection release between them, and without unnecessary usage of RACH between every packet call. With the help of DPCCH gating concept together with DCH+DSCH concept, we can offer the end user a very flexible and fast packet service in such way, that we do not sacrifice the UE battery life too much.

If DPCCH gating would not be specified, the relative long periods (=end user's reading time) between each packet call, will consume UE batteries unnecessarily, which does not make much sense. However, it should be understood, that if operator wants to use long connection release times, he is allowed to do that, since there are no limitations anyway in the specifications, how long the connection release time can be.

The relative power consumption of different paths in RX and TX side will have effect on achieved battery saving figures depending on UE implementation.

## 9 Backward Compatibility

A UE based on Release 99 can be used in Release 4 UTRAN with gating capability without any impact because the gating capability is negotiated during call-setup. Similarly, a UE based on Release 4 with gating capability can be used in Release 99 UTRAN without any impact by the same reason. Consequently, the backward compatibility is guaranteed with gating in Release 4.



## Annex A: Change history

Change history							
Date	TSG #	TSG Doc.	CR	Rev	Subject/Comment	Old	New
2000.8	RAN1#15	R1-00-1166			Approval at TSG RAN WG1#15 meeting	-	0.0.1
2000.9	RAN#9	RP-00-0408			Presented at TSG RAN#9 plenary meeting. Comments were: 1. RRC blocking problem due to reduced power control rate 2. UE transmit power limitation in cell boundary	0.0.1	1.0.0
2000.10	RAN1#16	R1-00-1304			Include expected gains in Network side. Data with restricted TFCS can be transmitted during gating. Enhance conceptual transition diagram.	1.0.0	1.1.0
2000.11	RAN1#17	R1-00-1444			Include RX gating features and calculation of UE battery life improvement obtained by TX and RX gating.	1.1.0	1.2.0
2000.12	RAN#10	RP-000548			Kept as version 2.0.0	1.2.0	2.0.0
2001.1	RAN1#18	R1-01-0179			Include outer loop power control features based on CRC attached to zero length transport block and some clarifications based on the comments made during RAN1#18.	2.0.0	2.1.0
2001.2. 28	RAN1#19	R1-01-0296			Include the results of discussions before RAN1#19 meeting. Some clarifications are made on power control during gating. Section 7.1.4.1 is added to describe the impact on RAN4 specification TS 25.101.	2.1.0	2.2.0
2001.3. 1	RAN1#19	R1-01-0395			It is indicated that a method for coexistence of gating and SSDD is being studied. Include text proposal for coexistence of gating and compressed mode (refer to R1-01-0398). Include the description about impact of compressed mode on UE battery life improvement and implementation dependency of gating benefit.	2.2.0	2.3.0

## Annex B: Information of rapporteur for 3G TR 25.840

LEE, Ju Ho

Company: Samsung Electronics

E-mail: [juhlee@samsung.com](mailto:juhlee@samsung.com)

Tel: +82-31-779-6843

Fax: +82-31-779-8003