

**TSG-RAN Working Group 1 meeting #17
Stockholm, Sweden, November 21-24, 2000**

TSGR1#17(00)1461

Agenda Item: AH22
Source: Nokia
Title: Revision of TR25.840 Terminal Power Saving Features including changes to facilitate OL PC to be based on CRC during DPCCH gating
Document for: Discussion and Approval

It is proposed that outer loop power control based on CRC attached to zero transport block will be used also during DPCCH gating. If there is no CRC transmitted then the outerloop power control target is considered frozen with DPCCH gating as is done with normal operation as well. Thus, the required changes are presented in this revised TR including changes in multiplexing definition in the TS 25.212.



**3rd Generation Partnership Project;
Technical Specification Group Radio Access Network;
Terminal Power Saving Features
(Release 4)**

The present document has been developed within the 3rd Generation Partnership Project (3GPP™) and may be further elaborated for the purposes of 3GPP

The present document has not been subject to any approval process by the 3GPP Organisational Partners and shall not be implemented. This Specification is provided for future development work within 3GPP only. The Organisational Partners accept no liability for any use of this Specification. Specifications and reports for implementation of the 3GPP™ system should be obtained via the 3GPP Organisational Partners' Publications Offices.

Keywords

<keyword[, keyword]>

3GPP

Postal address

3GPP support office address

650 Route des Lucioles - Sophia Antipolis
Valbonne - FRANCE
Tel.: +33 4 92 94 42 00 Fax: +33 4 93 65 47 16

Internet

<http://www.3gpp.org>

Copyright Notification

No part may be reproduced except as authorized by written permission.
The copyright and the foregoing restriction extend to reproduction in all media.

© 2000, 3GPP Organizational Partners (ARIB, CWTS, ETSI, T1, TTA, TTC).
All rights reserved.

Contents

Foreword.....	4
1 Scope.....	5
2 References.....	5
3 Definitions, symbols and abbreviations.....	5
3.1 Definitions.....	5
3.2 Symbols.....	5
3.3 Abbreviations.....	5
4 Background and Introduction.....	5
5 Requirements to the Solution.....	6
5.1 Level of Changes with respect to Release 99.....	6
5.1.1 Gated DPCCH Transmission Scheme in FDD.....	6
5.1.1.1 Required Changes in UE.....	6
5.1.1.2 Required Changes in Node B.....	6
5.2 Expected Gain with respect to Release 99.....	6
5.2.1 Gated DPCCH Transmission Scheme in FDD.....	6
5.2.1.1 Expected Gains in UE Side.....	6
5.2.1.2 Expected Gains in Network Side.....	6
6 Terminal Power Saving Features.....	6
6.1 Gated DPCCH Transmission Scheme in FDD.....	6
6.1.1 Related Parameters.....	7
6.1.2 Initiation and Termination Indication of Gated DPCCH Transmission.....	7
6.1.3 Operation in Gated DPCCH Transmission Mode.....	7
6.1.3.1 Normal Gating Period.....	7
6.1.3.1.1 Uplink and Downlink Gating.....	7
6.1.3.1.2 Downlink Only Gating.....	8
6.1.3.2 Embedded DPDCH Period.....	12
6.1.4 Detection of DPDCH frame during Gating.....	12
6.1.5 DPCCH Switch-On Time Slot.....	12
6.1.5.1 Downlink DPCCH Switch-On Time Slot.....	12
6.1.5.2 Uplink DPCCH Switch-On Time Slot.....	12
6.1.5.3 Reference Pattern.....	13
6.1.6 Power Control.....	13
6.1.6.1 Power Control Parameters.....	13
6.1.6.2 Power Control Procedure.....	14
6.1.6.2.1 Uplink and Downlink Gated DPCCH Transmission.....	14
6.1.6.2.2 Downlink Only Gated DPCCH Transmission.....	15
6.1.7 Operation with other Features.....	15
6.1.7.1 Transmit diversity.....	15
6.1.7.1.1 Open Loop Transmit Diversity.....	15
6.1.7.1.2 Closed Loop Transmit Diversity.....	15
6.1.7.2 Compressed mode.....	15
6.1.7.3 Soft Handover.....	15
6.1.7.4 SSDT.....	16
7 Impacts to WGs.....	16
7.1 Gated DPCCH Transmission Scheme.....	16
7.1.1 WG1.....	16
7.1.2 WG2.....	16
7.1.4 WG4.....	16
8 Performance.....	16
8.1 Gated DPCCH Transmission Scheme.....	16
8.1.1 Uplink Interference Reduction Gain [1].....	16

8.1.1.1	Link level simulation.....	17
8.1.1.1.1	Simulation parameters.....	17
8.1.1.1.2	Simulation results	17
8.1.1.2	Uplink Interference Reduction Gain.....	19
8.1.1.3	Conclusion	21
8.1.2	UE Battery Life Enhancement [2].....	21
8.1.2.1	Assumptions and models used in battery life calculations.....	21
8.1.2.1.1	Packet model.....	21
8.1.2.1.2	Assumptions in UE battery life calculations.....	22
8.1.2.2	UE battery life improvement calculations.....	23
8.1.2.3	Conclusion	23
8.1.3	References	23
9	Backward Compatibility.....	24
	History.....	25

Foreword

This Technical Specification has been produced by the 3rd Generation Partnership Project (3GPP).

The contents of the present document are subject to continuing work within the TSG and may change following formal TSG approval. Should the TSG modify the contents of the present document, it will be re-released by the TSG with an identifying change of release date and an increase in version number as follows:

Version x.y.z

where:

- x the first digit:
 - 1 presented to TSG for information;
 - 2 presented to TSG for approval;
 - 3 or greater indicates TSG approved document under change control.
- y the second digit is incremented for all changes of substance, i.e. technical enhancements, corrections, updates, etc.
- z the third digit is incremented when editorial only changes have been incorporated in the document.

1 Scope

The present document is the Technical Report of the Release 4 work item “Terminal Power Saving Features”.

2 References

The following documents contain provisions which, through reference in this text, constitute provisions of the present document.

?? References are either specific (identified by date of publication, edition number, version number, etc.) or non-specific.

?? For a specific reference, subsequent revisions do not apply.

?? For a non-specific reference, the latest version applies.

[1] 3G TS 25.211 (V3.2.0): "Example 1, using sequence field".

3 Definitions, symbols and abbreviations

3.1 Definitions

For the purposes of the present document, the following terms and definitions apply.

Example: text used to clarify abstract rules by applying them literally.

3.2 Symbols

3.3 Abbreviations

For the purposes of the present document, the following abbreviations apply:

CFN	Connection Frame Number
DPCCH	Dedicated Physical Control Channel
DPCH	Dedicated Physical Channel
DSCH	Downlink Shared Channel
PDSCH	Physical Downlink Shared Channel

4 Background and Introduction

Battery life is an important resource in UE side but there's few explicit features dedicated to UE battery saving in Release 99 specification. In order to enhance the UE battery life with respect to Release 99, terminal power saving feature is under discussion for Release 4 work item. In this technical report, the requirements and detail solutions are described.

5 Requirements to the Solution

This section describes the requirements to the solution of terminal power saving feature. It includes the level of changes and expected gains with respect to Release 99.

5.1 Level of Changes with respect to Release 99

5.1.1 Gated DPCCH Transmission Scheme in FDD

Detail parameters and procedure of gated DPCCH transmission is covered in subclause 6.1.

5.1.1.1 Required Changes in UE

When a UE supports gated transmission, the UE should have a capability of determining turn-on and turn-off time slot of uplink and/or downlink for transmission and reception. In gating mode, the uplink power should be adjusted based on the power control command in latest downlink turned-on time slot.

5.1.1.2 Required Changes in Node B

When a Node B supports gated transmission, Node B should be able to determine uplink and/or downlink turn-on and turn-off time slot for transmission and reception. In gating mode, the downlink power should be adjusted based on the power control command in latest uplink turned-on time slot.

5.2 Expected Gain with respect to Release 99

5.2.1 Gated DPCCH Transmission Scheme in FDD

5.2.1.1 Expected Gains in UE Side

In Release 99, UE battery life was not considered explicitly as a requirement to the specification. With the gated DPCCH transmission scheme, UE battery life can be extended with respect to Release 99 by turning off the transmitter intermittently.

5.2.1.2 Expected Gains in Network Side

By using uplink gated DPCCH transmission, the interference in uplink can be reduced because the transmission rate is reduced. Similarly, by using downlink gated DPCCH transmission, the interference in downlink can be reduced because the transmission rate is reduced. The reduction in interference level in uplink and downlink can be converted to the increased uplink and downlink capacity.

6 Terminal Power Saving Features

In this section, the solutions for the terminal power saving features are described.

6.1 Gated DPCCH Transmission Scheme in FDD

Gated DPCCH transmission scheme (hereafter, “gating” or “gating mode” are used interchangeably.) is basically reduced power control rate operation to get power saving and interference reduction by turning off transmission intermittently. Gating can be applied when UTRAN and UE support gating, DSCH and associated DPCH in downlink and DPCH in uplink are set-up between UTRAN and UE, but there is no data to transmit on both uplink and downlink for a while. UTRAN can initiate the gating by higher layer signaling. UTRAN can terminate the gating by higher layer

signaling. Once gating is initiated data with restricted TFS can be transmitted on downlink DPDCH that is associated with DSCH as well as uplink DPDCH, without terminating gating.

There are two kinds of period in gated DPCCH transmission depending on the transmission of data on DPDCH during gating. In Normal Gating Period, ~~DPDCH is not transmitted~~ both DPCCH and DPDCH fields will contain transmitted bits only in certain slots of the frame. DPDCH field is sent in the same slot as DPCCH field due to the fact that CRC is attached to zero TrCH block to facilitate adequate performance for outer loop power control. If there is no CRC transmitted i.e. only DPCCH field is transmitted then the outerloop power control target is considered frozen with normal DPCCH gating as is done with normal operation. and This period is described in section 6.2.3.1. However, even during gating mode, DPDCH can be transmitted without terminating the gating exceptionally for the data with restricted TFS. This Embedded DPDCH Period is described in section 6.1.3.2.

6.1.1 Related Parameters

When the call is setup, UTRAN and UE negotiate the gating capability and parameters. The parameters controlling the gating operation are:

Table 1. Gating Parameters

Gating Rate	1	1/3	1/5
-------------	---	-----	-----

Gating Mode	Downlink Only	Uplink and Downlink
-------------	---------------	---------------------

6.1.2 Initiation and Termination Indication of Gated DPCCH Transmission

The gated DPCCH transmission can be initiated by the UTRAN's command to UE. Gated DPCCH transmission can be terminated by UE's request followed by UTRAN's permission or by UTRAN's notice to UE. That is, UTRAN determines whether gated DPCCH transmission is initiated or terminated. Gating is initiated and terminated by higher layer signaling.

6.1.3 Operation in Gated DPCCH Transmission Mode

During gating mode, data with restricted TFS can be transmitted on DPDCH that is associated with DSCH without terminating the gating. The transmitter operation when ~~the DPDCH is not transmitted during~~ (Normal Gating Period) is covered in section 6.1.3.1. The transmitter operation ~~during when the DPDCH is transmitted~~ (Embedded Gating Period) is covered in section 6.1.3.2. Figure 1 and 2 are the conceptual diagram of "uplink and downlink" and "downlink only" gated DPCCH transmission, respectively.

6.1.3.1 Normal Gating Period

During normal gating period both DPCCH and DPDCH fields are transmitted in the same slot if CRC is attached to zero TrCH block. This is due to the fact that outer loop power control is based on CRC attached to zero TrCH block. Thus, the encoded CRC bits will be mapped only to those slots, where DPCCH field is also transmitted. Consequently, this requires changes in transport channel multiplexing chains in uplink and downlink. The needed changes in the multiplexing chains are described in section 6.1.3.1.3. On the other hand, when there is no CRC attached to zero TrCH block i.e. only DPCCH field is transmitted then the outerloop power control target is considered frozen with DPCCH gating as is done with normal operation.

6.1.3.1.1 Uplink and Downlink Gating

In Normal Gating Period in uplink, ~~only~~ the DPCCH is transmitted intermittently together with DPDCH field consisting of CRC encoded bits if CRC is attached to zero TrCH block and UE shall turn its transmitter on only for the time slots specified in Table 3 and turn its transmitter off in all other time slots.

In Normal Gating Period in downlink, UTRAN shall turn on the transmission of TPC and PILOT field together with DPDCH field consisting of CRC encoded bits if CRC is attached to zero TrCH block only for the time slots specified in Table 4 while turn on the transmission of TFCI in all the time slots. UTRAN shall turn off the transmission in remaining part.

6.1.3.1.2 Downlink Only Gating

In Normal Gating Period in downlink, UE shall always turn on its transmitter and transmit all the DPCCH fields (PILOT, TFCI, TPC, FBI) together with DPDCH field consisting of CRC encoded bits if CRC is attached to zero TrCH block. However, because TPC field in uplink can be updated only for the associated downlink turn-on time slot, downlink power control rate is lower than non-gating operation. Similarly, uplink power control rate is also lower than non-gating operation.

In Normal Gating Period, UTRAN shall turn on the transmission of TFCI in all the time slots. On the other hand, UTRAN shall turn on the transmission of TPC and PILOT together with DPDCH field consisting of CRC encoded bits if CRC is attached to zero TrCH block only for the time slots specified in Table 2. UTRAN shall turn off the transmission in remaining part.

6.1.3.1.3 Changes needed in the transport channel multiplexing chains in TS 25.212

6.1.3.1.3.1 Physical channel mapping

It is defined in sections 4.2.12.1 and 4.2.12.2, physical channel mapping for uplink and downlink, that during compressed mode, bits are mapped only to certain slots of the frame. Consequently, similar kind of addition is needed for gating, saying that during gating, bits are mapped only to certain slots of the frame.

In uplink :

- during normal gating mode, the bits are mapped only to those slots, where DPCCH is also transmitted.
- during embedded mode, the bits are mapped to all slots in the frame

In downlink:

- during normal gating mode the bits are mapped only to those slots where DPCCH is also transmitted
- during embedded mode, the bits are mapped to all slots in the frame

Here : normal gating mode = frames where only CRCs with zero length TrCH block(s) is (are) transmitted

embedded mode = frames where at least one non-zero length TrCH block is transmitted

This means that during RX gating [5.6], in every Kth frame UE receiver needs to decode the TFCI, before it knows that in what slots the bits are mapped to. If TFCI defines that there are only zero length transport blocks in the frame, then UE knows that the bits are mapped to only certain slots of the frame. And if TFCI defines that there is at least one non-zero length transport block in the frame, then UE knows that the bits are mapped to all slots in the frame.

The similar procedure is required from NodeB in uplink, in every frame. NodeB has to use pilot energy comparison to detect whether the frame is in normal gating mode or in embedded mode. In embedded mode all the pilot fields exist. If it detects that the frame is in normal gating mode, it knows that DPDCH is transmitted in the same slots as DPCCH. If it detects that the frame is in embedded mode, then it decodes the TFCI, and decodes the data from all slots in the frame.

6.1.3.1.3.2 2nd Insertion of DTX indication bits in downlink

Presently it is defined in section 4.2.9.2. "2nd insertion of DTX indication bits " that:

- S is the number of bits from TrCH multiplexing
- P is the number of PhCHs bits
- R is the number of bits in one radio frame , including DTX indication bits

Required changes:

- 1) In embedded mode, the same definition can be used as before. So no changes are needed.
- 2) During normal gating mode, R needs to be replaced by Rgating, where:
 - Rgating=R/3 if gating rate=1/3

- $R_{gating} = R/5$ if gating rate=1/5

6.1.3.1.3.3 Rate matching in uplink

Presently it is defined in section 4.2.7. "Rate matching" that:

- $N_{data,j}$ is the total number of bits that are available for the CCTrCH in a radio frame with transport format combination j.

Required changes:

1) In embedded mode, the same definition can be used as before. So no changes needed.

2) In normal gating mode, $N_{data,j}$ needs to be replaced by $N_{data,j}^{gating}$ where:

- $N_{data,j}^{gating} = N_{data,j} / 3$ if gating rate=1/3

- $N_{data,j}^{gating} = N_{data,j} / 5$ if gating rate=1/5

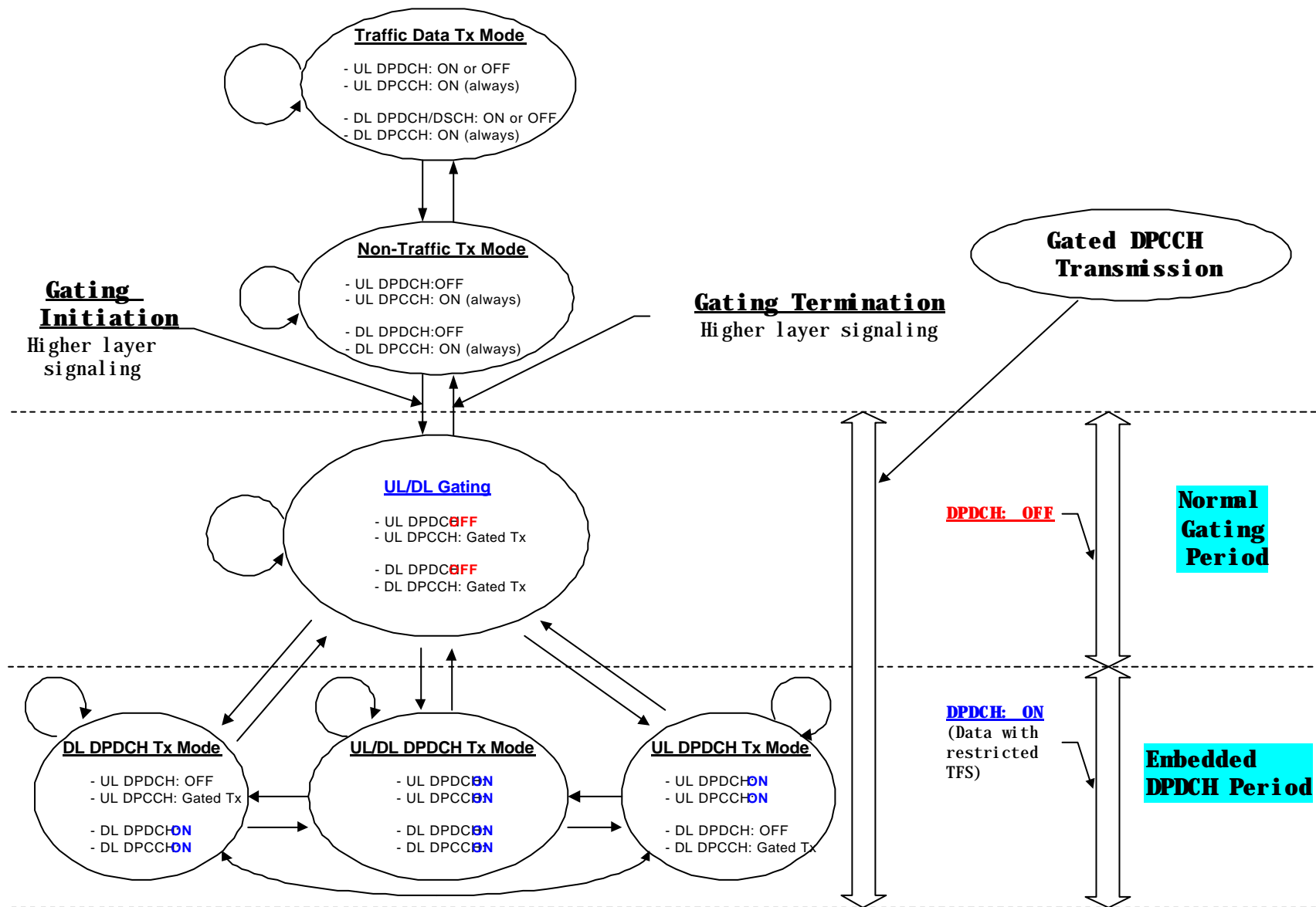


Figure 1. Conceptual Transition Diagram of Gating: Uplink and Downlink Gating

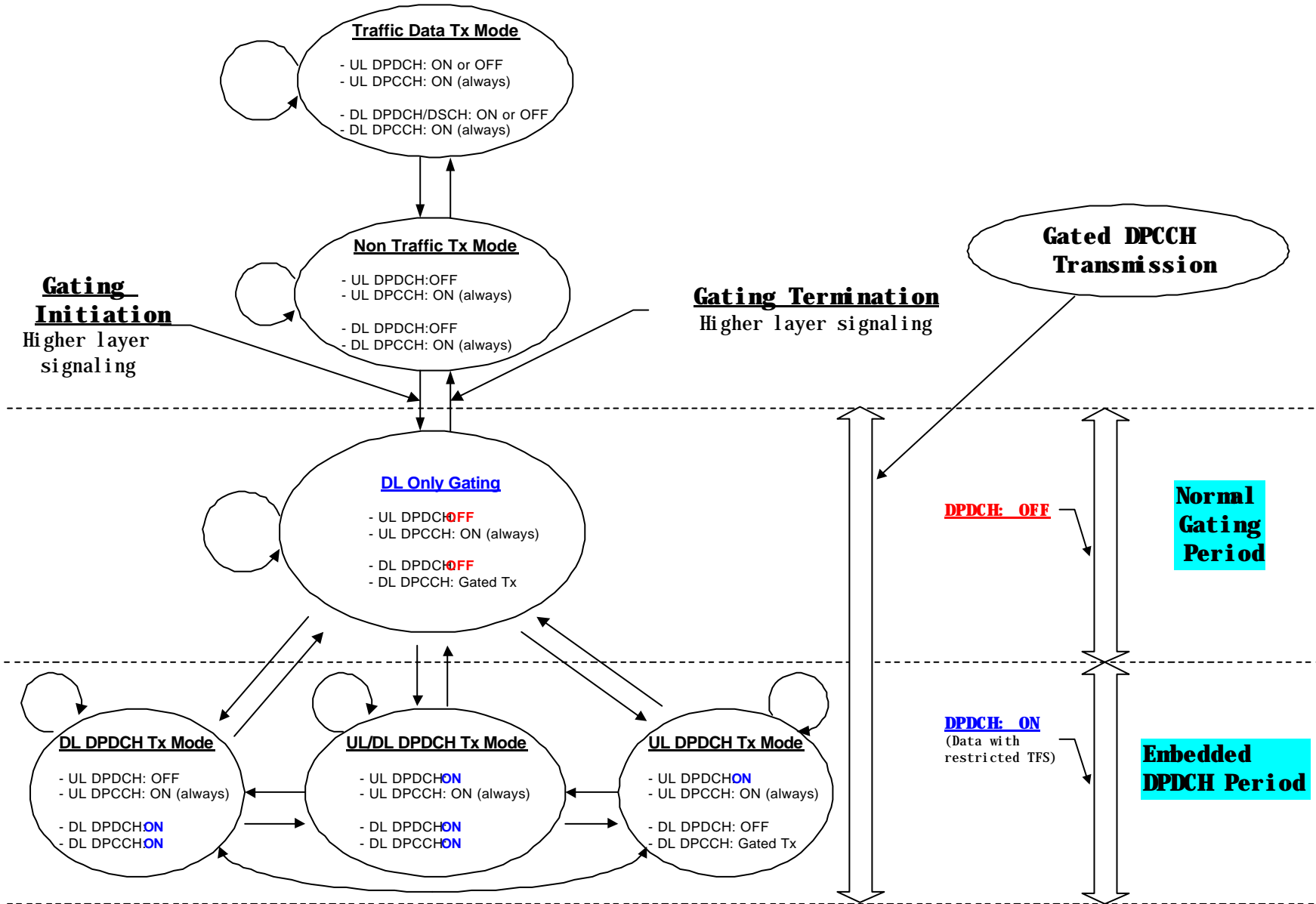


Figure 2. Conceptual Transition Diagram of Gating: Downlink Only Gating

6.1.3.2 Embedded DPDCH Period

Once gating is initiated, there are a number of necessity and advantages by permitting transmission of data with restricted TFS on DPDCH without terminating the gating. First, unnecessary signaling to initiate and terminate gating can be avoided. Second, the average duration of gating can be increased and terminal power consumption and interference can be decreased further. Third, it should be allowed to minimise unnecessary delay in handover procedure. Fourth, it should be allowed to terminate gating by RRC signaling. One possible way to restrict the data rate that is permitted to transmit during gating is limiting TFS. If there is a possibility to restrict the allowed TFS during the gating, there will be no problems with capacity or coverage in the cell during the gating, even the required Tx power during the gating is somewhat increased. That is to say, Embedded DPDCH Period does not affect the cell coverage or capacity at all with restricted data rate.

In Embedded DPDCH Period in downlink, UTRAN transmits DPDCH as well as DPCCH. In Embedded DPDCH Period in downlink, UTRAN shall turn its transmission on all the time slots and transmit all the DPCCH fields (PILOT, TFCI, TPC) but TPC shall be updated only for the time slot specified in Table 2.

In Embedded DPDCH Period in uplink, UE transmits DPDCH as well as DPCCH. In Embedded DPDCH Period in uplink, UE shall turn its transmitter on all the time slots and transmit all the DPCCH fields (PILOT, TFCI, TPC, FBI) but TPC shall be updated only at the time slot specified in Table 3.

6.1.4 Detection of DPDCH frame during Gating

During gating, data with restricted TFS can be transmitted in uplink or downlink DPDCH frame, but receiver should detect the transmitted frame because the receiver does not know the transmission. UE can determine the existence of downlink DPDCH frame by decoding downlink TFCI because downlink TFCI field is always transmitted. In uplink, UTRAN shall not use TFCI to detect the uplink DPDCH frame since part of uplink TFCI in a frame may not be transmitted. One possible solution for the frame detection in UTRAN is the pilot energy comparison. Pilot energy in the uplink time slots that do not contain pilot during gating is compared to pilot energy in those slots that contains pilot during gating. If this is above threshold, then UTRAN decodes the uplink TFCI and uplink DPDCH frame.

6.1.5 DPCCH Switch-On Time Slot

6.1.5.1 Downlink DPCCH Switch-On Time Slot

In downlink, UTRAN shall turn on the transmission of TFCI all the time slots while turn on the transmission of TPC and PILOT only for the time slots specified in Table 2. Furthermore, DPDCH field carrying encoded CRC bits is mapped to those slots where TPC and PILOT fields are transmitted if CRC is attached to zero TrCH block. In the table, the CFN of the radio frame is denoted by i , and the range of the gating group number j defined in subclause 6.1.5.3 is $j = 0, 1, 2, 3, 4$ for gating rate $1/3$, and $j = 0, 1, 2$ for gating rate $1/5$. The function $s(i,j)$ used for the reference pattern is defined in subclause 6.1.5.3.

Table 2. Switched-on Time Slots for downlink DPCCH.

Gating rate	Switched-on Time Slots for downlink DPCCH fields		
	Pilot	TPC	TFCI
1	All slots (0, 1, ..., 14)	All slots (0, 1, ..., 14)	All slots (0, 1, ..., 14)
1/3	$j ? 3 + s(i,j) - 1$	$j ? 3 + s(i,j)$	All slots (0, 1, ..., 14)
1/5	$j ? 5 + s(i,j) - 1$	$j ? 5 + s(i,j)$	All slots (0, 1, ..., 14)

6.1.5.2 Uplink DPCCH Switch-On Time Slot

In uplink, UE shall turn on the transmission of PILOT, TFCI, TPC, and FBI only for the time slots specified in Table 3. In addition, DPDCH field carrying encoded CRC bits is mapped to those slots, where DPCCH field is also transmitted if CRC is attached to zero TrCH block.

Table 3. Switched-on Time Slots for uplink DPCCH.

Gating rate	Switched-on Time Slots for uplink DPCCH fields Pilot, TFCI, FBI, TPC
1	All slots (0, 1, ..., 14)
1/3	$j \cdot 3 + s(i,j)$
1/5	$j \cdot 5 + s(i,j)$

6.1.5.3 Reference Pattern

15 slots of the radio frame are divided into N gating groups, each group consists of S consecutive slots. For gating rate 1/3, $N = 5$ and $S = 3$, and for gating rate 1/5, $N = 3$ and $S = 5$. Denote the CFN of the current radio frame by i , $i = 0, 1, 2, \dots, 255$. Further define the 19 bit sequence $(a_{18}, a_{17}, \dots, a_0) = (1, 0, 0, 1, 0, 1, 1, 1, 0, 1, 1, 0, 0, 1, 0, 1, 1, 0, 1)$.

Table 4. Summary of Reference Pattern $s(i, j)$

Parameter	Value	
CFN	0, 1, ..., 255 (8bits)	
$a_{18}, a_{17}, \dots, a_0$	1, 0, 0, 1, 0, 1, 1, 1, 0, 1, 1, 0, 0, 1, 0, 1, 1, 0, 1	
gating rate	1/3	1/5
Number of gating group (N)	5	3
Gating group size (S)	3	5

For CFN i , $i = 0, 1, 2, \dots, 255$, concatenated CFN $C_i = i \cdot 256 + i$, and gating group j , the function $s(i, j)$ is defined as

$$s(i, j) = \begin{cases} (A_j \oplus C_i)_{10} \bmod (S - 1) + 1, & j = 0 \\ (A_j \oplus C_i)_{10} \bmod S, & j = 1, \dots, N - 2 \\ S - 1, & j = N - 1 \end{cases} \quad i = 0, 1, \dots, 255$$

where $(X)_{10}$ represents the decimal representation of the number X , and $X \oplus Y$ denotes bit-wise modulo 2 addition of the binary representation of the numbers X and Y . And $A_j = \sum_{k=0}^{j-1} 2^{k \cdot S} a_k, j=0, 1, \dots, N-2$.

6.1.6 Power Control

6.1.6.1 Power Control Parameters

In this subclause, the power control parameters during and after the gated DPCCH transmission.

- DPC_MODE 0

In DPC_MODE 0, if gated DPCCH transmission is not initiated, the UE sends a unique TPC command in each slot and the TPC command generated is transmitted in the first available TPC field in the uplink DPCCH.

During gated DPCCH transmission, both of the transmit time slot and receive time slot in uplink and downlink are not continuous. UE sends a unique TPC command in each switch-on transmit time slot and the TPC command generated based on the switch-on receive time slot is transmitted in the first available TPC field in the uplink DPCCH.

- DPC_MODE 1

In DPC_MODE 1, if gated DPCCH transmission is not initiated, the UE repeats the same TPC command over 3 slots and the new TPC command is transmitted such that there is a new command at the beginning of the frame.

During gated DPCCH transmission, DPC_MODE 1 cannot be used because the transmission of DPCCH field is not continuous. One possible solution is that during gating, DPC_MODE 0 is used instead of DPC_MODE 1 without explicit signaling.

- Algorithm 1

In Algorithm 1, if gated DPCCH transmission is not initiated, UE shall derive a TPC_cmd based on the TPC command(s) received in each slot.

During gated DPCCH transmission, the UE derives a unique TPC command in each switch-on downlink time slot and adjust its transmission power in the first available switch-on transmit time slot.

- Algorithm 2

In Algorithm 2, if gated DPCCH transmission is not initiated, UE shall process received TPC commands on a 5-slot cycle. It emulates smaller step sizes than the minimum power control step specified in subclause 5.1.2.2.1, or to turn off uplink power control by transmitting an alternating series of TPC commands.

During gated DPCCH transmission, Algorithm 2 cannot be used because the downlink transmission of DPCCH field is not continuous. One possible solution is that during gating, Algorithm 1 is used instead of Algorithm 2 without explicit signaling.

- Recovery period

During gated DPCCH transmission, the power control rate is reduced by the amount of gating rate. In order to compensate the effect of reduced power control rate during gating, power control recovery period is used similarly to compressed mode.

- Power control step

During gated DPCCH transmission, power control step can be different from non-gating mode in order to compensate the reduced power control rate.

6.1.6.2 Power Control Procedure

In this subclause, the power control procedure is described.

6.1.6.2.1 Uplink and Downlink Gated DPCCH Transmission

In the case that the gated DPCCH transmission is enabled for both uplink and downlink, the power control operations are as follows.

Uplink transmit power adjustment

UE shall adjust the transmit power in switched-on time slot in response to the latest valid downlink TPC. The change in uplink transmit power shall take place immediately before the start of the pilot field on the uplink DPCCH.

Uplink TPC generation and transmission

UE shall generate the uplink TPC based on the latest valid downlink switched-on time slot, and shall transmit the TPC on the next valid uplink switched-on time slot

Downlink transmit power adjustment

UTRAN shall adjust the transmit power in switched-on time slot in response to the latest valid uplink TPC. The change in downlink transmit power shall take place immediately before the start of the pilot field on the downlink DPCCH

Downlink TPC generation and transmission

UTRAN shall generate the downlink TPC based on the latest valid uplink switched-on time slot, and shall transmit the TPC on the next valid downlink switched-on time slot

6.1.6.2.2 Downlink Only Gated DPCCH Transmission

In the case that the gated DPCCH transmission is enabled only for the downlink, then the power control operations are as follows.

Uplink transmit power adjustment

UE shall adjust the transmit power in response to the downlink TPC received in the valid downlink switched-on time slot. And the uplink transmit power shall remain constant until next valid downlink TPC is received. The change in uplink transmit power shall take place immediately before the start of the pilot field on the uplink time slot.

Uplink TPC generation and transmission

UE shall generate and transmit an uplink TPC based on the valid downlink switched-on time slot. And the UE shall transmit the TPC repeatedly before receiving the next valid downlink switched-on time slot.

Downlink transmit power adjustment

UTRAN shall adjust the transmit power in switched-on time slot in response to the repeated uplink TPC(s) which are known to be the same. The change in downlink transmit power shall take place immediately before the start of the pilot field on the switched-on downlink time slot

Downlink TPC generation and transmission

UTRAN shall generate and transmit downlink TPC based on the uplink time slot(s) whose transmit power is known to be the same.

6.1.7 Operation with other Features

In this subclause, the required changes in operation of other features when the features are used with gated DPCCH transmission are investigated.

6.1.7.1 Transmit diversity

6.1.7.1.1 Open Loop Transmit Diversity

Since STTD encoding is performed for each time slot unit, there's no impact by gated DPCCH transmission.

6.1.7.1.2 Closed Loop Transmit Diversity

When the gated DPCCH transmission is turned on during closed loop transmit diversity, gating impacts uplink feedback signaling. For closed loop transmit diversity Mode 1, it will work without changes. For closed loop transmit diversity Mode 2, one possible solution is that during gating, Mode 1 is used instead of Mode 2 without explicit signaling. If the Mode 1 is used instead of Mode 2 during gated DPCCH transmission, the Tx diversity mode should be return to Mode 2 without explicit signaling when the gated DPCCH transmission is terminated.

6.1.7.2 Compressed mode

If the compressed mode is initiated during gated DPCCH transmission, gating shall be disabled. It means that the gating should be terminated before inter-frequency and inter-system hard handover.

6.1.7.3 Soft Handover

If any of the Node Bs in the Active set do not support gated transmission, gated DPCCH transmission shall be disabled. In other words, if a new radio link is setup during gating mode and the Node B of the newly added radio link does support gating, then the gating shall be terminated.

6.1.7.4 SSdT

Gated DPCCH shall be disabled when the soft handover is initiated with SSdT.

7 Impacts to WGs

In this subclause, the technical specifications of each WG that may be impacted by each solution for terminal power saving features are listed.

7.1 Gated DPCCH Transmission Scheme

7.1.1 WG1

TS 25.214

7.1.2 WG2

TS 25.301

TS 25.302

TS 25.331

7.1.4 WG4

TS 25.101

8 Performance

8.1 Gated DPCCH Transmission Scheme

8.1.1 Uplink Interference Reduction Gain [1]

In gating mode, the following transmission cases are possible.

- DPCCH only transmission
- DPDCH and DPCCH transmission

That is, as shown in Figure 4, DPCCH is always transmitted but DPDCH can be transmitted when there's data to transmit during gating mode. (Here, for example, DPDCH transfers data with restricted TFS such as signaling message that is usually transmitted occasionally. Let "DPDCH frequency" be the probability of transmitting DPDCH during gating mode.)

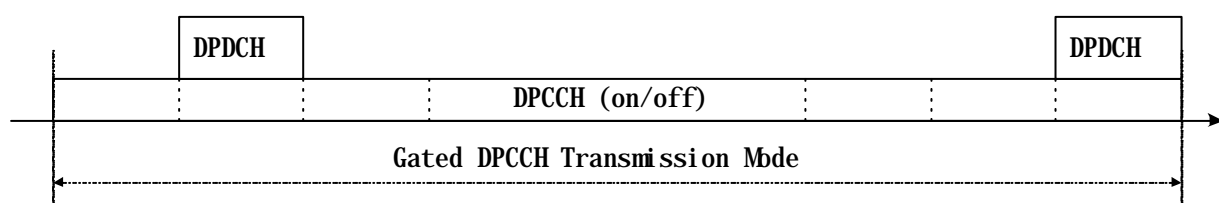


Figure 4. DPDCH Transmission during gated DPCCH transmission mode

The average interference reduction gain is defined as:

Average Uplink interference reduction gain

$$= (\text{average transmit power when no gating}) / (\text{average transmit power when gating})$$

Note that the average uplink interference reduction gain is defined as the ratio of the average transmission power. Although the transmit power of DPDCH should be increased to compensate the reduced power control rate, the transmit power can be saved during DPCCH only transmission period. Thus the average interference reduction gain highly depends on the DPDCH frequency, and the results are shown with respect to the DPDCH frequency ranges from 1% to 30%.

Simulation and analysis results show that the average interference reduction gain is 4~6dB if the DPDCH frequency is 1%, 2.0~2.5dB if the DPDCH frequency is 10%. Since the average interference reduction gain the ratio of average transmit power, the gated DPCCH transmission provides gain in terms of UE Tx power saving.

8.1.1.1 Link level simulation

8.1.1.1.1 Simulation parameters

The link-level simulation was performed to evaluate the required Eb/No of uplink DPDCH during gated DPCCH transmission mode. Note that the performance of the uplink DPDCH depends on the uplink power control rate (downlink TPC rate). More precisely, the FER of uplink DPDCH is simulated when the downlink TPC is transmitted with rate 1, 1/3, and 1/5. The channel models are CASE1 for 3km/h and CASE3 for 120km/h. The detail simulation parameters are shown in table 5.

Table 5. Simulation parameters (uplink)

Carrier frequency		2.0 GHz
Chip rate		3.84 Mcps
Channel bit rate	DPDCH	60 kbps
	DPCCH	15 kbps
Modulation	Data	BPSK
	Spreading	QPSK
Slot structure	DPCCH	Pilot: 6, TPC: 2, TFCI: 2
	DPDCH	Data: 40
Channel model	Multi-path fading	2-path Rayleigh
	Finger	2 fingers
	Receiver antenna diversity	On
	Doppler frequency [Hz]	5.6(3km/h) , 222(120km/h)
DPCCH/DPDCH [dB]		-5dB
Power control	Dynamic range	Unlimited (assume ideal power amplifier)
	Step size	1.0 dB
	Rate	1500Hz(1/1 gating = no gating), 500Hz(1/3 gating), 300Hz(1/5 gating)
	TPC error	4%
Channel estimation		WMSA

8.1.1.1.2 Simulation results

Figure 5 and 6 show the uplink DPDCH FER when the downlink TPC is transmitted with rate 1, 1/3, and 1/5, where R represents gating rate.

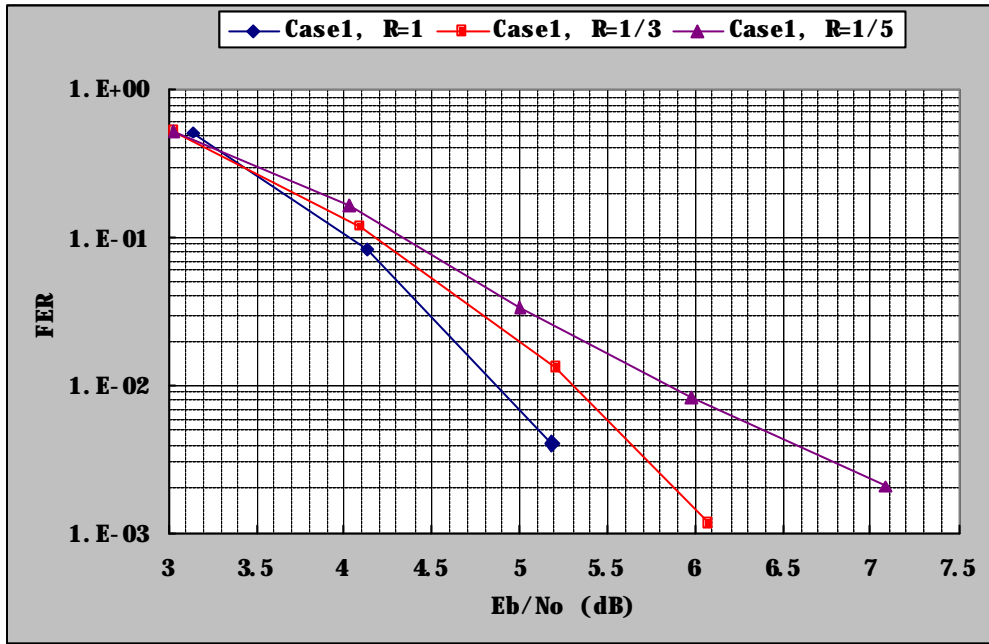


Figure 5. Uplink DPDCH Frame Error Rate with various gating rate and speed (Case 1)

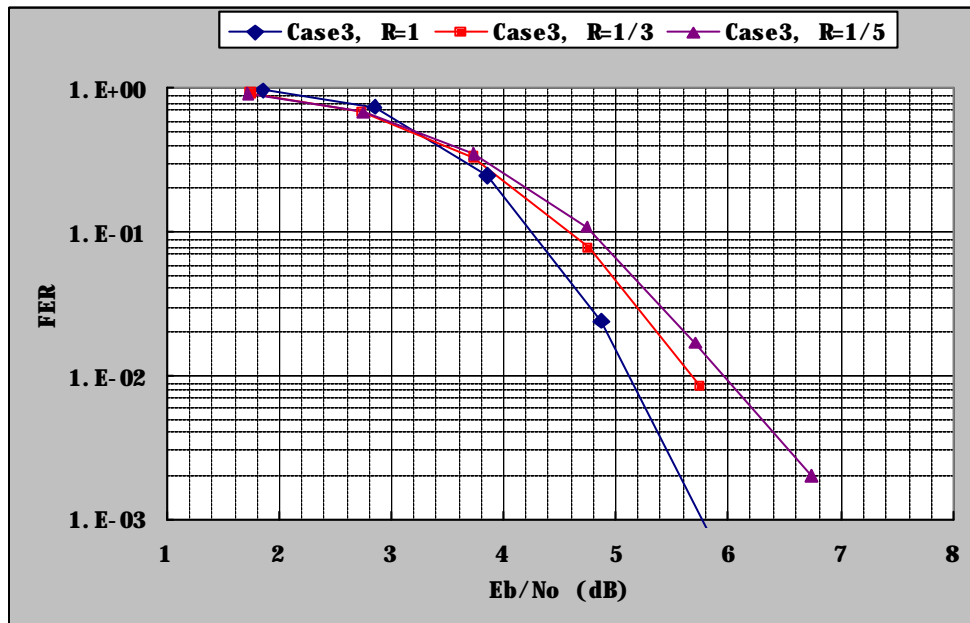


Figure 6. Uplink DPDCH Frame Error Rate with various gating rate and speed (Case 3)

The required transmit E_b/N_0 for the uplink DPDCH to obtain 1% FER is summarised in table 6. In addition, the E_b/N_0 difference compared with gate rate 1 is also given. From the results, we can see that the E_b/N_0 loss by 1/3 rate gating at 3km/h is about 0.42dB, for example. The uplink DPCCH performance loss, which is measured by TPC BER, due to gated DPCCH transmission is max. 0.5dB for gating rate=1/5.

Table 6. Required Tx E_b/N_0 [dB] to maintain 1% FER

UE speed	Gating Rate		
	1/1	1/3	1/5
Case1(3km/h)	4.88	5.3(+0.42)	5.88(1.0)
Case3(120km/h)	5.1	5.68(0.58)	6.0(0.9)

* () indicates E_b/N_0 difference compared with 1/1 (no gating)

Tx. $E_b = E_{DPDCH} + E_{DPCCH}$ per one antenna

8.1.1.2 Uplink Interference Reduction Gain

In this subsection we analyse the average uplink interference reduction gain in gated DPCCH transmission mode based on the link simulation results in subsection 2.2. The disadvantage of the gated DPCCH transmission is the increase of the required E_b/N_0 to obtain 1% DPDCH FER. In addition, the transmit power of DPCCH also should be increased due to reduced uplink power control rate. The average uplink interference reduction gain is defined in section 1 and restated for convenience.

Average uplink interference reduction gain

$$= (\text{Average transmit power when no gating}) / (\text{Average transmit power when gating})$$

In order to see the gain, let's assume the following parameters.

<p>F = DPDCH frequency (%)</p> <p>R = Gating rate (1, 1/3, or 1/5)</p> <p>P_{DPCCH} = Power of DPCCH,</p> <p>P_{DPDCH} = Power of DPDCH = ?? P_{DPCCH} (? = 5dB)</p> <p>A_{DPCCH} = Additional E_b/N_0 required for DPCCH only transmission (0.5dB)</p> <p>A_{DPCH} = Additional E_b/N_0 required for DPDCH+DPCCH transmission (Given in table 2)</p>
--

From the assumed parameters, only DPCCH is transmitted in F% of time, and both (DPDCH+DPCCH) are transmitted in (100-F)% of time. The average uplink interference reduction gain is defined as the ratio of average transmission power as follows.

Average Uplink Interference Reduction Gain

<p>Average uplink interference reduction gain</p> $= 10 * \log_{10} (P(\text{no gating})/P(\text{gating}))$

where P(no gating) and P(gating) represents the average transmit power when the gated DPCCH transmission is disabled and enabled, respectively.

P(no gating)

The average transmit power when the gated DPCCH transmission is disabled is given by

<p>$P(\text{no gating}) = (\text{Average transmit power when no gating})$</p> $= (100-F) * P_{DPCCH} + F * (P_{DPCCH} + P_{DPDCH})$ $= (100+?? F) P_{DPCCH}$

P(gating)

The average transmit power when the gated DPCCH transmission is enabled is given by

$$P(\text{gating}) = (\text{Average transmit power during only DPCCH transmission when gating}) + (\text{Average transmit power during (DPDCH+DPCCH) transmission when gating})$$

During DPCCH only transmission period, the average transmit power is given by

$$(\text{Average transmit power during only DPCCH transmission when gating}) = (100-F) * P_{\text{DPCCH}} * 10^{(0.1 * A_{\text{DPCCH}})} * R$$

During both (DPDCH+DPCCH) transmission period, there is E_{DPCH} loss, so the required power is

$$(\text{Average transmit power during (DPDCH+DPCCH) transmission when gating}) = F * (P_{\text{DPCCH}} + P_{\text{DPDCH}}) * 10^{(0.1 * A_{\text{DPCH}})}$$

Based on the above method, we calculate the average uplink interference reduction gain for 1% DPDCH frequency as table 7 (F=1).

Table 7. Uplink interference reduction [dB] (1% DPDCH frequency)

UE speed	Overall interference reduction gain [dB]	
	1/3	1/5
3km/h	3.94	5.75
120km/h	3.93	5.77

Consequently, in case of 1% DPDCH frequency, the uplink interference reduction gain (~5.77dB) can be achieved by gated DPCCH transmission in spite of increasing transmission power of DPDCH during gating. The DPDCH frequency has an important role in the uplink interference reduction gain. Figure 7 shows the average uplink interference reduction gain against the DPDCH frequency. From these figures, we can see that more than 2.5dB gain can be achieved when the DPDCH frequency is 10%, and the gain increases as the DPDCH frequency decreases.

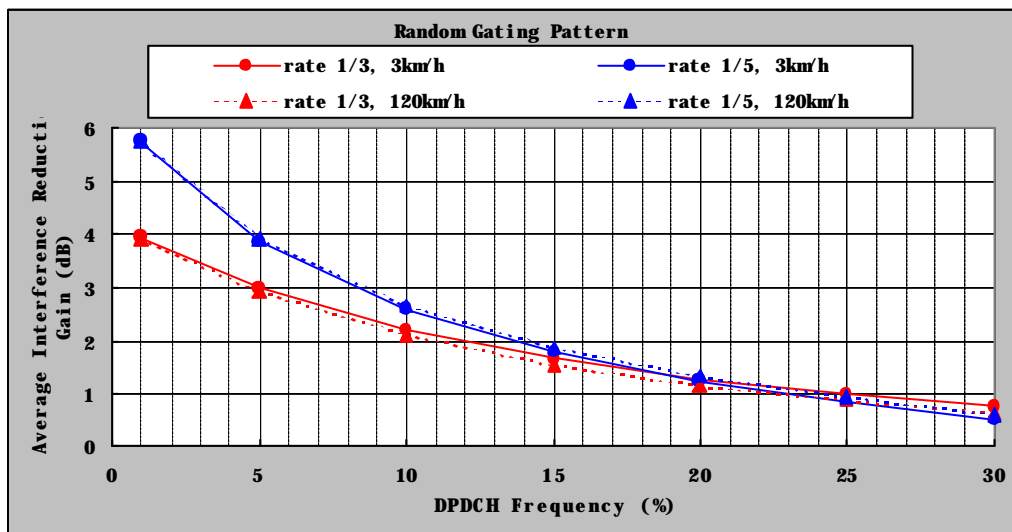


Figure 7. Average uplink interference reduction gain

8.1.1.3 Conclusion

From the simulation and analysis results, the uplink interference reduction gain is enough to use gated DPCCH transmission. If the DPDCH frequency is 10%, the interference reduction gain is about 2.5dB, and the gain increases as the DPDCH frequency decreases. Consequently, the gated DPCCH transmission is beneficial to the interference reduction, that is, the transmit power reduction.

8.1.2 UE Battery Life Enhancement [2]

8.1.2.1 Assumptions and models used in battery life calculations

8.1.2.1.1 Packet model

The same packet model was used as described in [3]. The Figure 8 shows the structure of the packet session, where:

T_p = average duration of one packet call.

T_{cr_dch} = connection release time for DCH only case.

T_{cr_dsch} = connection release time for DSCH+DCH case.

One interesting point here is that T_{cr_dsch} can be quite large, larger than T_{cr_dch} , which means that it can be so long the connection does not have to be released between each packet call. This is because DCH associated with DSCH could use quite high spreading factor, e.g. SF=256. However, it does not make any difference to the battery life calculations. Meaning, that if the simplified assumption is that gap between two packet calls is equal or larger than T_{cr_dch} or T_{cr_dsch} , then following model, explained below can be used in the battery life calculations.

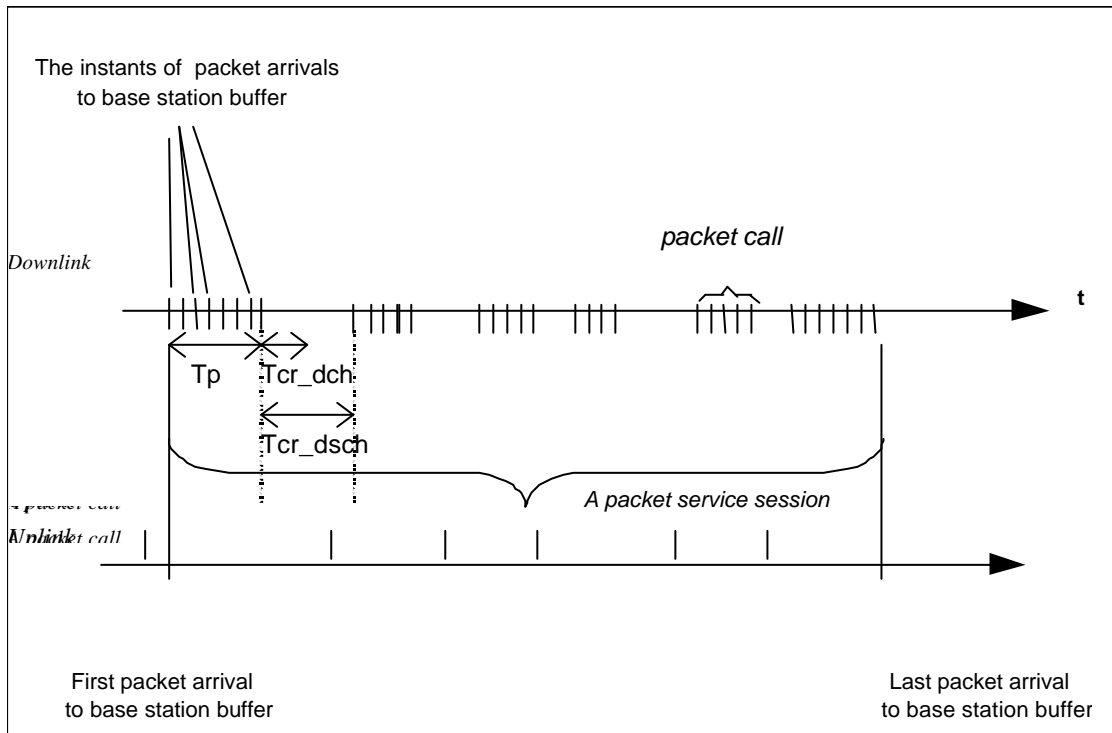


Figure 8. Packet model

Figure 9 shows the timing model, how the gating is assumed to be turned on in the battery calculations. Here T_{gat_on} is the time after the last packet when the gating is turned on. Note that T_{gat_on} should be larger than the time interval between individual packet bursts within T_p . Thus the percentage of time that the gating is on during the whole connection is

$$\text{For DCH only case: } DPCCH_gating_ \% = \frac{T_{cr_dch} \cdot T_{gat_on}}{T_p \cdot T_{cr_dch}}$$

$$\text{For DCH+DSCH case: } DPCCH_gating_ \% = \frac{T_{cr_dsch} \cdot T_{gat_on}}{T_p \cdot T_{cr_dsch}}$$

In [3], it was roughly calculated with these equations, that the percentage of time the DPCCH gating could be on, on average:

$$\text{For DCH only case: } DPCCH_gating_ \% = 0.30$$

$$\text{For DCH+DSCH case: } DPCCH_gating_ \% = 0.66$$

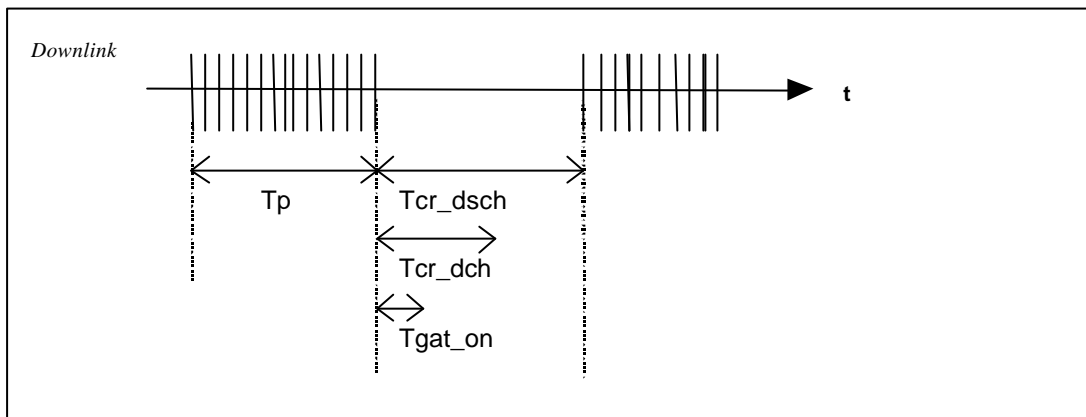


Figure 9. Timing for turning the gating on.

8.1.2.1.2 Assumptions in UE battery life calculations

Following assumptions were used in the simplified UE battery life calculations in [4].

- 1) First it was assumed what is the percentage of battery consumption of tx side and rx side, respectively, for certain tx power level, when gating is not used. Let's say that with tx power level, tx_{pwr} , this results in :

- tx side consumes $N1$ mA @ tx_{pwr}
- rx side consumes $N2$ mA @ tx_{pwr}

No specific data rates were assumed here either in uplink or downlink, for simplification. This is because data rate change in downlink was assumed not to affect the battery consumption so much. The continuous decoding is needed anyway in downlink, since the packet transmission can be assumed to restart in any frame and handover measurements are running continuously. If continuous decoding in every frame could be avoided, then we could assume clearly a different figure for rx side battery consumption during gating state, but until then, the same value $N2$, is assumed for rx side throughout the whole connection.

- 2) Then it was calculated, what is the tx side battery consumption, if tx gating is used. Separate values were calculated for 1/3 gating and 1/5 gating, with the same corresponding tx power level tx_{pwr} . This resulted in following value:

- tx side consumes $N1_gating$ mA, during gating @ tx_{pwr}

3) Finally it was calculated what is the overall battery life improvement:

$$\text{Battery_life_improvement} ? \frac{N1 ? N2}{(1 ? \text{DPCCH_gating_}\%) ? N1 ? \text{DPCCH_gating_}\% ? N1_gating ? N2}$$

8.1.2.2 UE battery life improvement calculations

The battery life improvement calculations from [4] are repeated here once more , for clarification.

Table 8 and 9 show UE battery lifetime improvements for DCH and DCH+DSCH case, for medium range tx pwr level and high tx power level, respectively. Thus the only difference in calculating DCH case and DCH+DSCH case, is the value used for DPCCH_gating_% value.

Table 8. UE battery life improvement due to gating, with medium range tx power level.

	DPCCH_gating_%	Gating rate	UE battery life improvement
DCH	30 %	1/3	8 %
		1/5	13 %
DCH+DSCH	66 %	1/3	21 %
		1/5	34 %

Table 9. UE battery life improvement due to gating, with maximum tx power level.

	DPCCH_gating_%	Gating rate	UE battery life improvement
DCH	30 %	1/3	10 %
		1/5	16 %
DCH+DSCH	66 %	1/3	26 %
		1/5	44 %

The results show that DPCCH gating means clear UE battery life improvement in DCH+DSCH case. For DCH only case it is maybe not as sensible to utilise it.

8.1.2.3 Conclusion

With the help of DCH+DSCH concept, several packet calls in one packet session can be transmitted during the same connection without connection release between them, and without unnecessary usage of RACH between every packet call. With the help of DPCCH gating concept together with DCH+DSCH concept, we can offer the end user a very flexible and fast packet service in such way, that we do not sacrifice the UE battery life too much.

If DPCCH gating would not be specified, the relative long periods (=end user's reading time) between each packet call, will consume UE batteries unnecessarily, which does not make much sense. However, it should be understood, that if operator wants to use long connection release times, he is allowed to do that, since there are no limitations anyway in the specifications, how long the connection release time can be.

8.1.3 References

[1] R1-00-1069, "Revised uplink interference reduction gain of gated DPCCH transmission", Samsung

[2] R1-00-1029, "Clarification of UE battery life calculations", Nokia

[3] R1-00-0686, "Discussion paper on DPCCH gating benefits", Nokia

[4] R1-00-0856, "UE battery life improvement with DPCCH gating", Nokia

[5] [R1-00-1079, "Proposal of using both tx and rx gating". Nokia](#)

[6] [R1-00-xxxx, "Further clarifications on RX gating". Nokia](#)

9 Backward Compatibility

A UE based on Release 99 can be used in Release 4 UTRAN with gated DPCCH transmission capability without any impact because the gating capability is negotiated during call-setup. Similarly, a UE based on Release 4 with gated DPCCH transmission capability can be used in Release 99 UTRAN without any impact by the same reason. Consequently, the backward compatibility is guaranteed with gated DPCCH transmission in Release 4.

History

Document history		
Date	Version	Comment
2000.8.	0.0.1	
2000.9	1.0.0	
2000.10	1.1.0	
Editor for 3G TR 25.840 is: Hokyung Choi		
Tel. : +82-31-779-6624 Fax : +82-31-779-8003 Email :choihk@samsung.com		
This document is written in Microsoft Word version.		

Annex <X>: Change history

Change history							
Date	TSG #	TSG Doc.	CR	Rev	Subject/Comment	Old	New
2000.8	RAN1#15	R1-00-1166			Approval at TSG RAN WG1#15 meeting	-	0.0.1
2000.9	RAN#9	RP-00-0408			Presented at TSG RAN#9 plenary meeting. Comments were: 1. RRC blocking problem due to reduced power control rate 2. UE transmit power limitation in cell boundary	0.0.1	1.0.0
2000.10	RAN1#16	R1-00-1304			Include expected gains in Network side. Data with restricted TFS can be transmitted during gating. Enhance conceptual transition diagram.	1.0.0	1.1.0