

**3GPP TSG\_CN  
Plenary Meeting #9, Oahu, Hawaii  
20<sup>th</sup> – 22<sup>nd</sup> September 2000.**

**Tdoc NP-000483**

**Source:** TSG\_N WG 4

**Title:** CRs to R99 Work Item CAMEL Phase 3

**Agenda item:**

**Document for:** APPROVAL

---

**Introduction:**

This document contains 12 CRs on R99 Work Item CAMEL Phase 3, that have been agreed by TSG\_N WG4, and is forwarded to TSG\_N Plenary meeting #9 for approval.

SM	TDoc	SPEC	CR	REV	PHAS	VERS	SUBJECT	CAT
CN9	N4-000722	23.018	061	2	R99	3.5.0	Update of CAMEL References	F
CN9	N4-000577	23.018	057	3	R99	3.5.0	Handling of the Call Diversion Treatment Indicator	F
CN9	N4-000770	23.018	063	1	R99	3.5.0	Correction of Obtain_Routeing_Address for the reconnect	A
CN9	N2-000533	23.018	056		R99	3.5.0	Correction to Process ICH_VLR	F
CN9	N4-000578	23.072	005		R99	3.2.0	Handling of the Call Diversion Treatment Indicator	F
CN9	N2-000273	23.072	004		R99	3.2.0	Transfer of Procedure Check_CD_SII2 to TS 23.078	F
CN9	N4-000579	23.093	004		R99	3.1.0	Handling of the Call Diversion Treatment Indicator	F
CN9	N2-000526	23.093	003	1	R99	3.1.0	Handling of the Call Completion Treatment Indicator	F
CN9	N4-000597	29.002	165		R99	3.5.1	Removal of LSIdentity from NoteMM-EventArg	F
CN9	N4-000665	29.002	162	1	R99	3.5.1	Correction on Location Information	F
CN9	N4-000776	29.002	173	2	R99	3.5.1	Optionality of parameters in GPRS-CSI	F
CN9	N4-000778	29.002	187		R99	3.5.1	Clarification for segmentation of D-CSI and SMS-CSI	F

## CHANGE REQUEST

**23.018 CR 056**

Current Version: 3.5.0

For submission to: TSG-CN#09

for approval   
for information

strategic   
non-strategic

**Proposed change affects:** (U)SIM  ME  UTRAN / Radio  Core Network

**Source:** N4 **Date:** 10<sup>th</sup> July 2000

**Subject:** Correction to Process ICH\_VLR

**Work item:** CAMEL Phase 3

<b>Category:</b>	F Correction	<input checked="" type="checkbox"/>	<b>Release:</b>	Phase 2	<input type="checkbox"/>
	A Corresponds to a correction in an earlier release	<input type="checkbox"/>		Release 96	<input type="checkbox"/>
	B Addition of feature	<input type="checkbox"/>		Release 97	<input type="checkbox"/>
	C Functional modification of feature	<input type="checkbox"/>		Release 98	<input type="checkbox"/>
	D Editorial modification	<input type="checkbox"/>		Release 99	<input checked="" type="checkbox"/>
				Release 00	<input type="checkbox"/>

**Reason for change:** The procedure CAMEL\_O\_CSI\_CHECK\_VLR is called twice in succession, one of the occurrences should be procedure CAMEL\_D\_CSI\_CHECK\_VLR as described in the text.

**Clauses affected:** 7.3.2.1

<b>Other specs affected:</b>	Other 3G core specifications	<input type="checkbox"/>	→ List of CRs:	
	Other GSM core specifications	<input type="checkbox"/>	→ List of CRs:	
	MS test specifications	<input type="checkbox"/>	→ List of CRs:	
	BSS test specifications	<input type="checkbox"/>	→ List of CRs:	
	O&M specifications	<input type="checkbox"/>	→ List of CRs:	

**Other comments:**

### 7.3.2.1 Process ICH\_VLR

...

| Sheet 7: the procedures CAMEL\_O\_CSI\_Check\_VLR, and CAMEL\_D\_CSI\_Check\_VLR are specific to CAMEL. They are specified in 3G TS 23.078 [28].

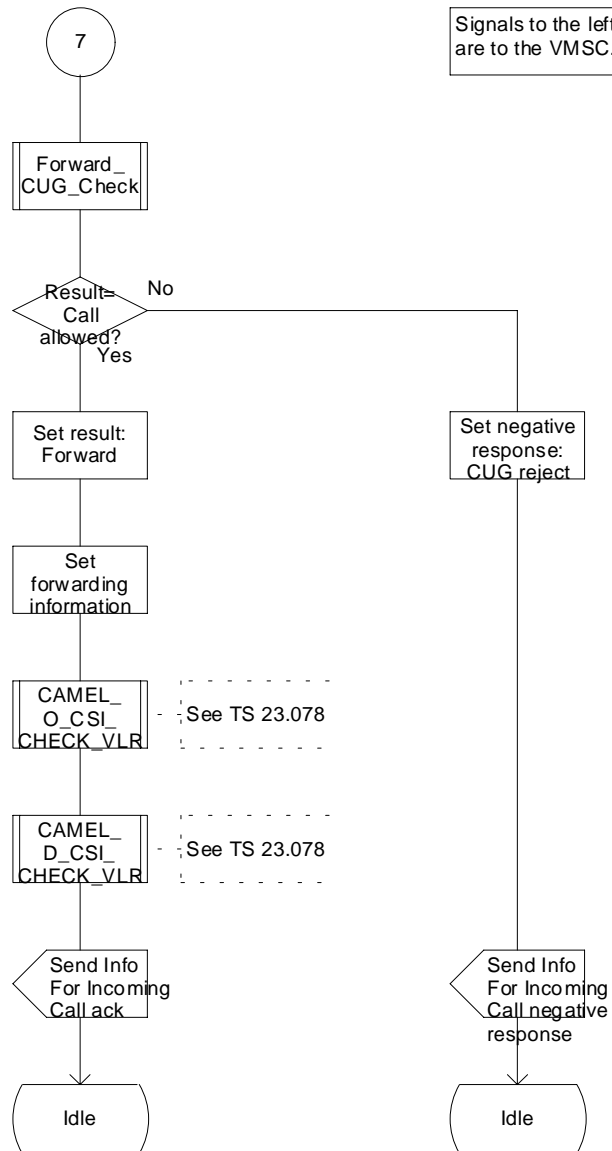
...

### Process ICH\_VLR

### ICH\_VLR7(7)

Process in VLRB to handle a request for information for an incoming (MT) call

Signals to the left are to the VMSC.



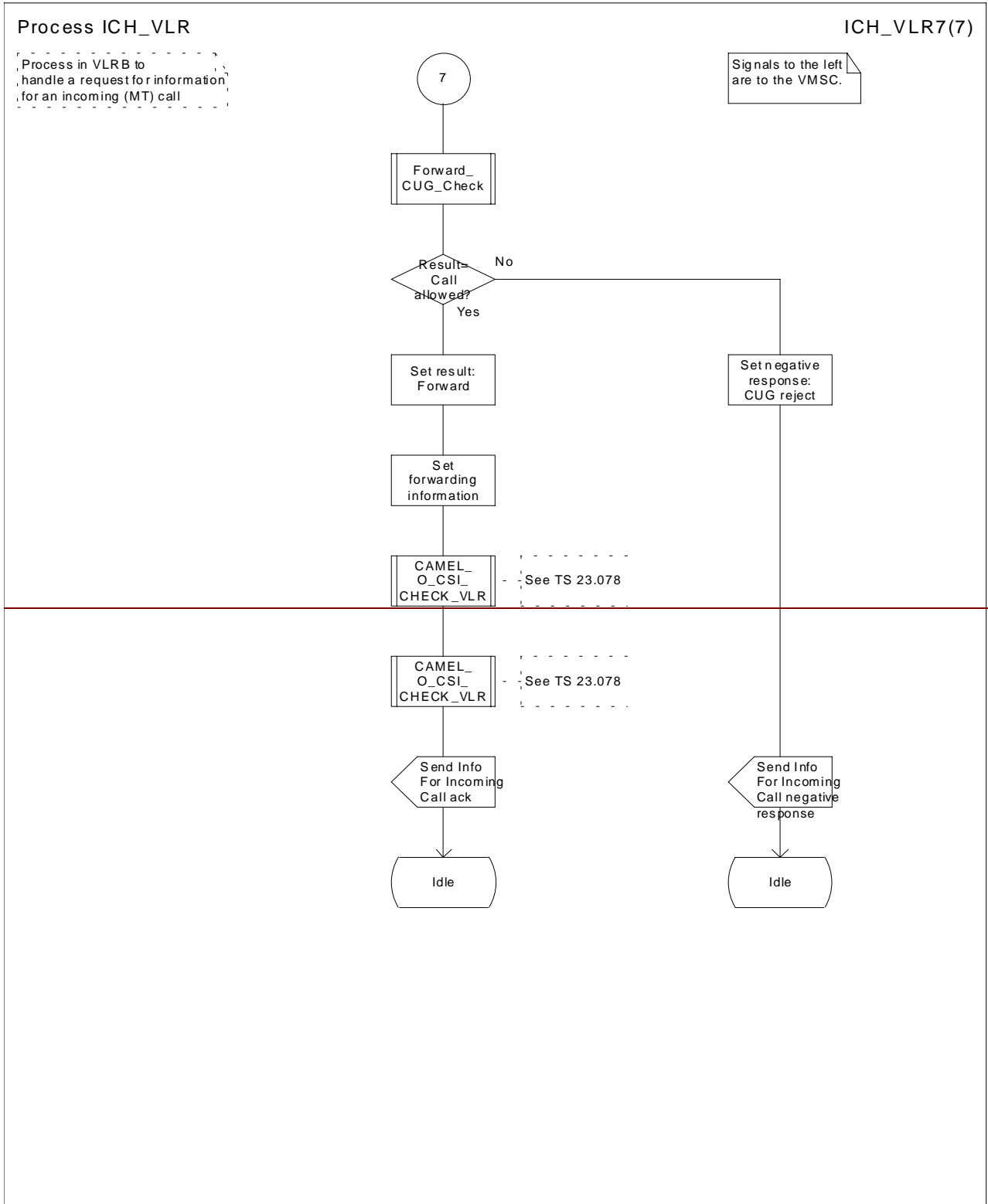


Figure 76g: Process ICH\_VLR (sheet 7)



**\*\*\* First Modified Section \*\*\***

## 7.2.2 Functional requirements of HLR

...

### 7.2.2.10 Procedure Handle\_CFU

The test "Normal call" refers to the value of the indicator returned by the process MAF007.

The procedure CAMEL\_CHECK\_SII2\_CDTI is specific to CAMEL Phase 3 or later; it is specified in 3G TS 23.078 [12]. If the GMSC does not support CAMEL Phase 3 or later, processing continues from the "Yes" exit of the test "Result = Pass?".

### 7.2.2.11 Procedure Handle\_CFNRC

The test "Mobile subscriber not reachable" refers to the value of the indicator returned by the process MAF010.

The procedure CAMEL\_CHECK\_SII2\_CDTI is specific to CAMEL Phase 3 or later; it is specified in 3G TS 23.078 [12]. If the GMSC does not support CAMEL Phase 3 or later, processing continues from the "Yes" exit of the test "Result = Pass?".

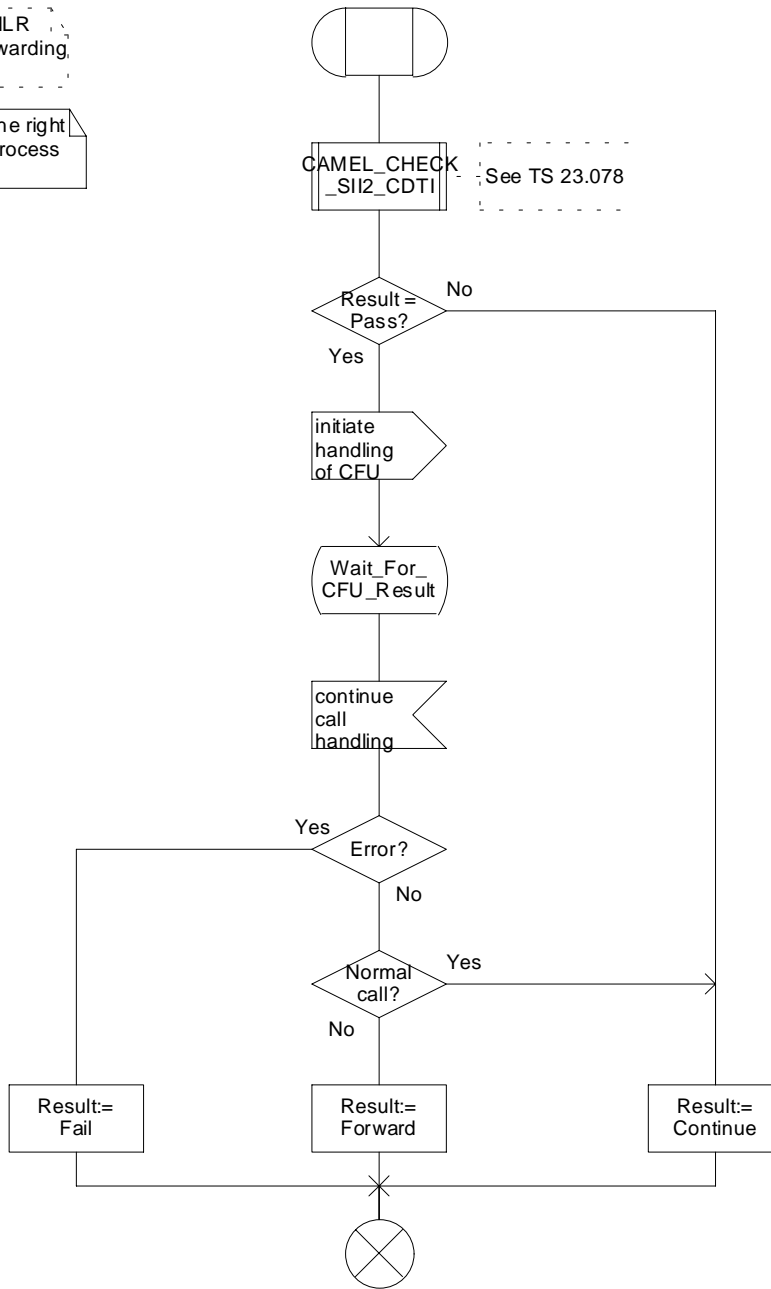
...

### Procedure Handle\_CFU

H\_CFU1(1)

Procedure in the HLR to handle Call Forwarding Unconditional

Signals to/from the right are to/from the process MAF007





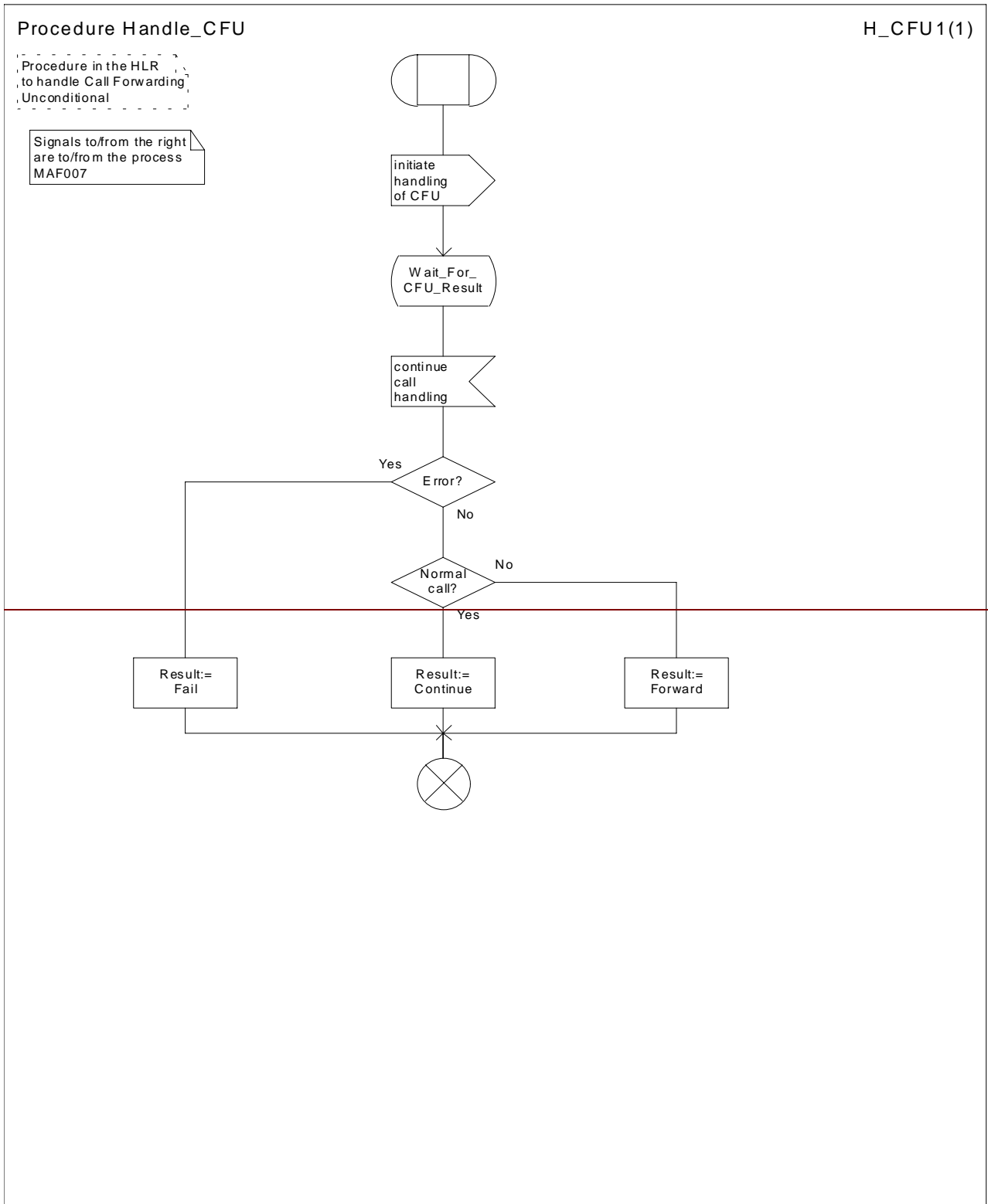


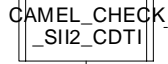
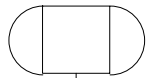
Figure 52: Procedure Handle\_CFU

Procedure Handle\_CFNRc

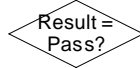
H\_CFNRc1(1)

Procedure in the HLR or VLR to handle Call Forwarding on Mobile Subscriber Not Reachable

Signals to/from the right are to/from the process MAF010

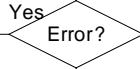
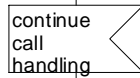
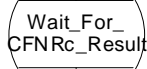
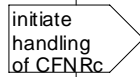


See TS 23.078

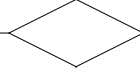


No

Yes

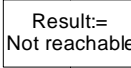
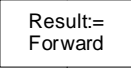
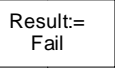


No



Yes

No



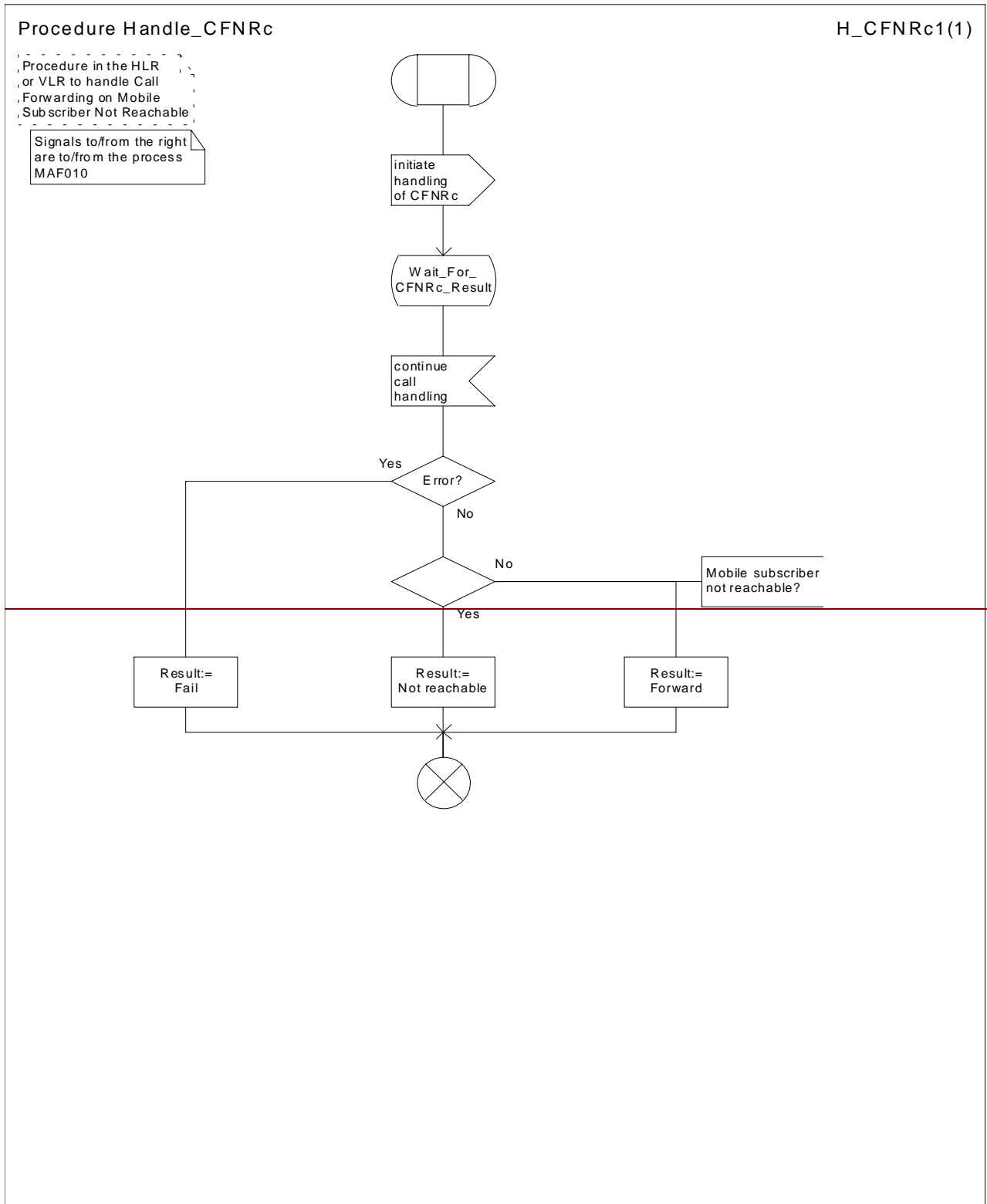


Figure 53: Procedure Handle\_CFNRc

**\*\*\* Next Modified Section \*\*\*****7.3.1.4 Procedure Complete\_Call\_In\_MSC**

...

Sheet 3, sheet 5: the procedure CCBS\_Ich\_MSC\_Report\_Success is specific to CCBS; it is specified in 3G TS 23.093 [22].

~~Sheet 3, sheet 5, sheet 11: the procedure Check\_CD\_SII2 is specific to Call Deflection; it is specified in 3G TS 23.072 [11]. If the VMSC does not support Call Deflection, processing continues from the "Yes" exit of the test "Result=Pass?".~~

Sheet 3: the procedure CAMEL\_Start\_TNRy is specific to CAMEL phase 3; it is specified in 3G TS 23.078 [12].

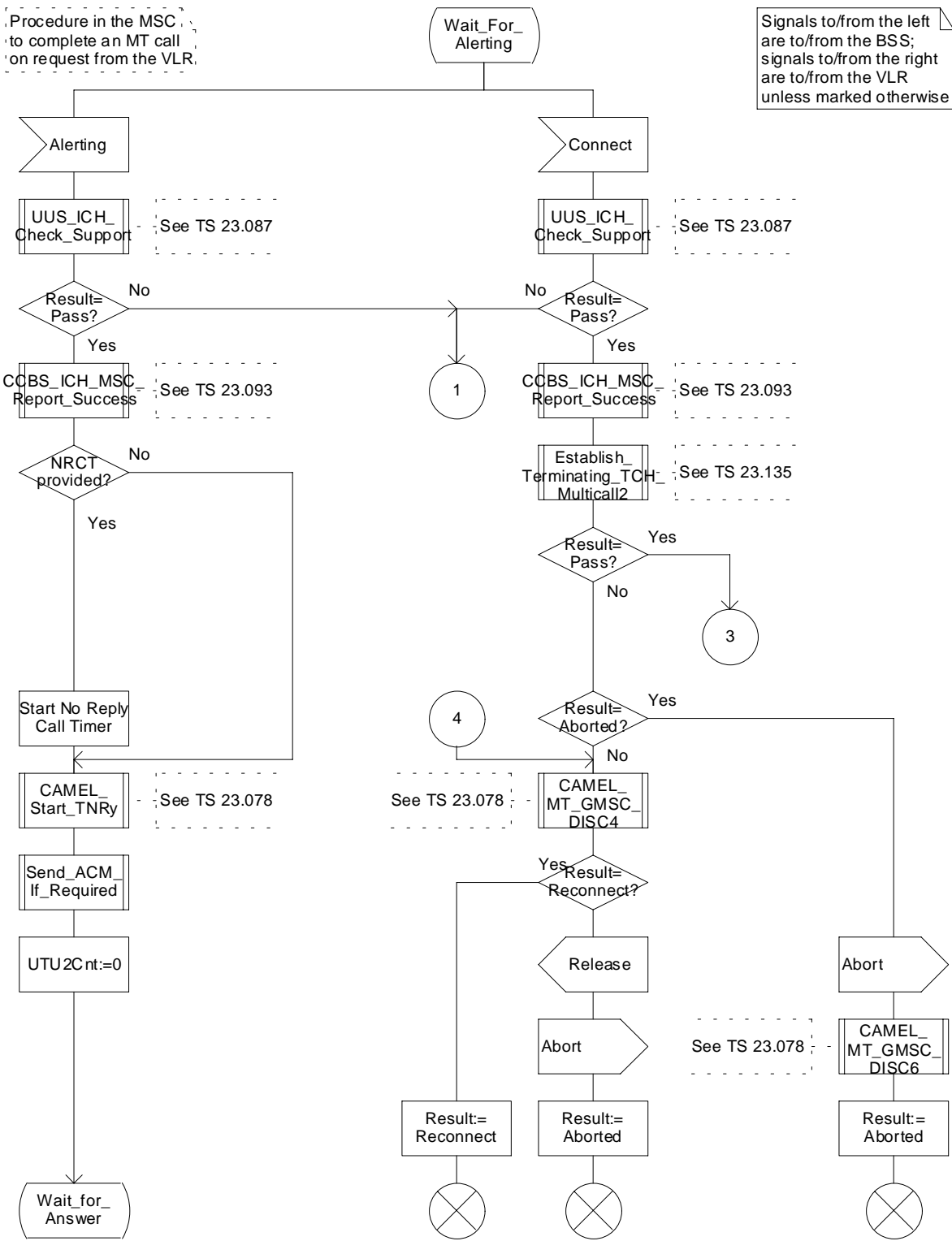
...

### Procedure Complete\_Call\_In\_MSC

### CCI\_MSC3(11)

Procedure in the MSC to complete an MT call on request from the VLR.

Signals to/from the left are to/from the BSS; signals to/from the right are to/from the VLR unless marked otherwise



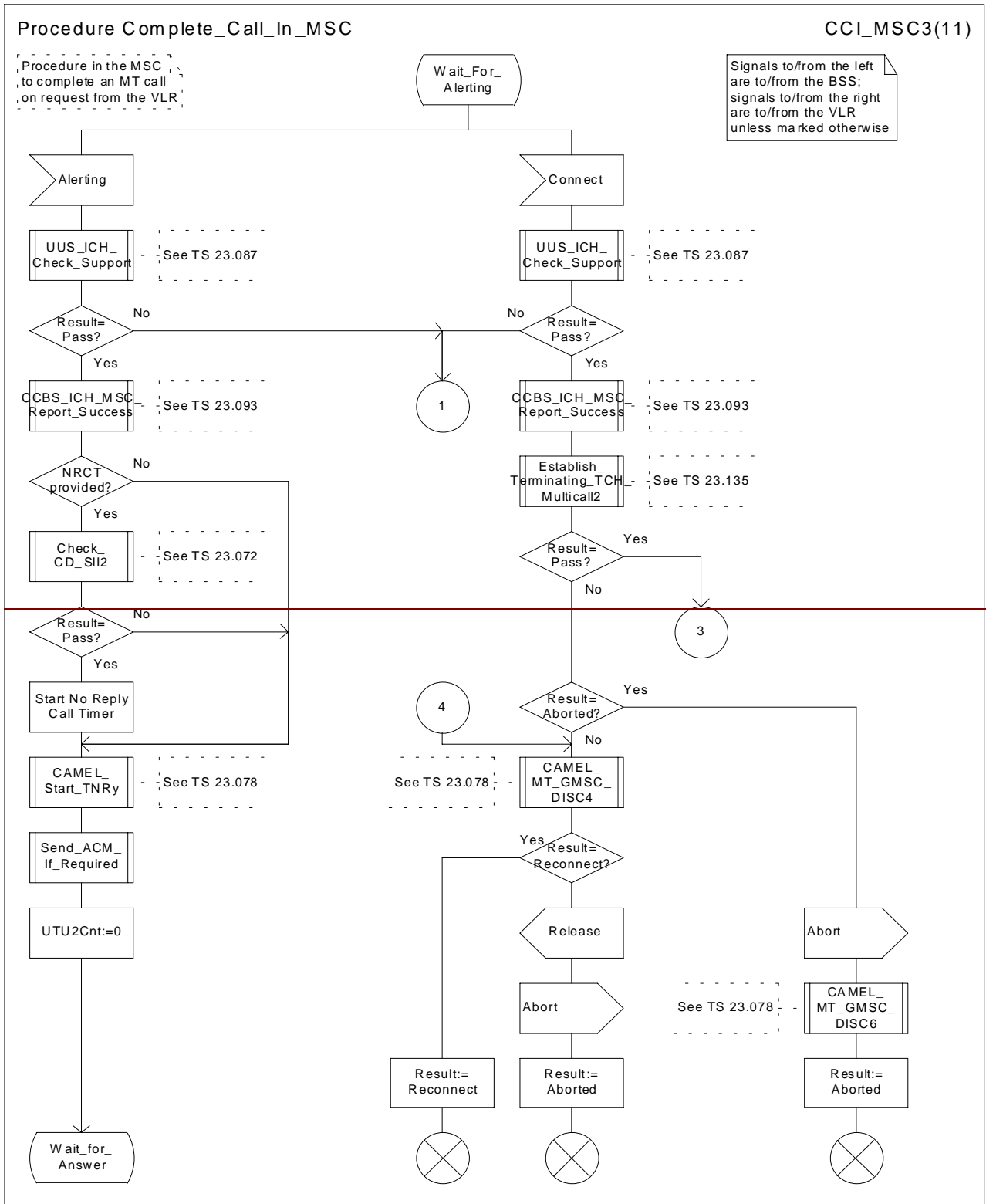


Figure 69c: Procedure Complete\_Call\_In\_MSC (sheet 3)

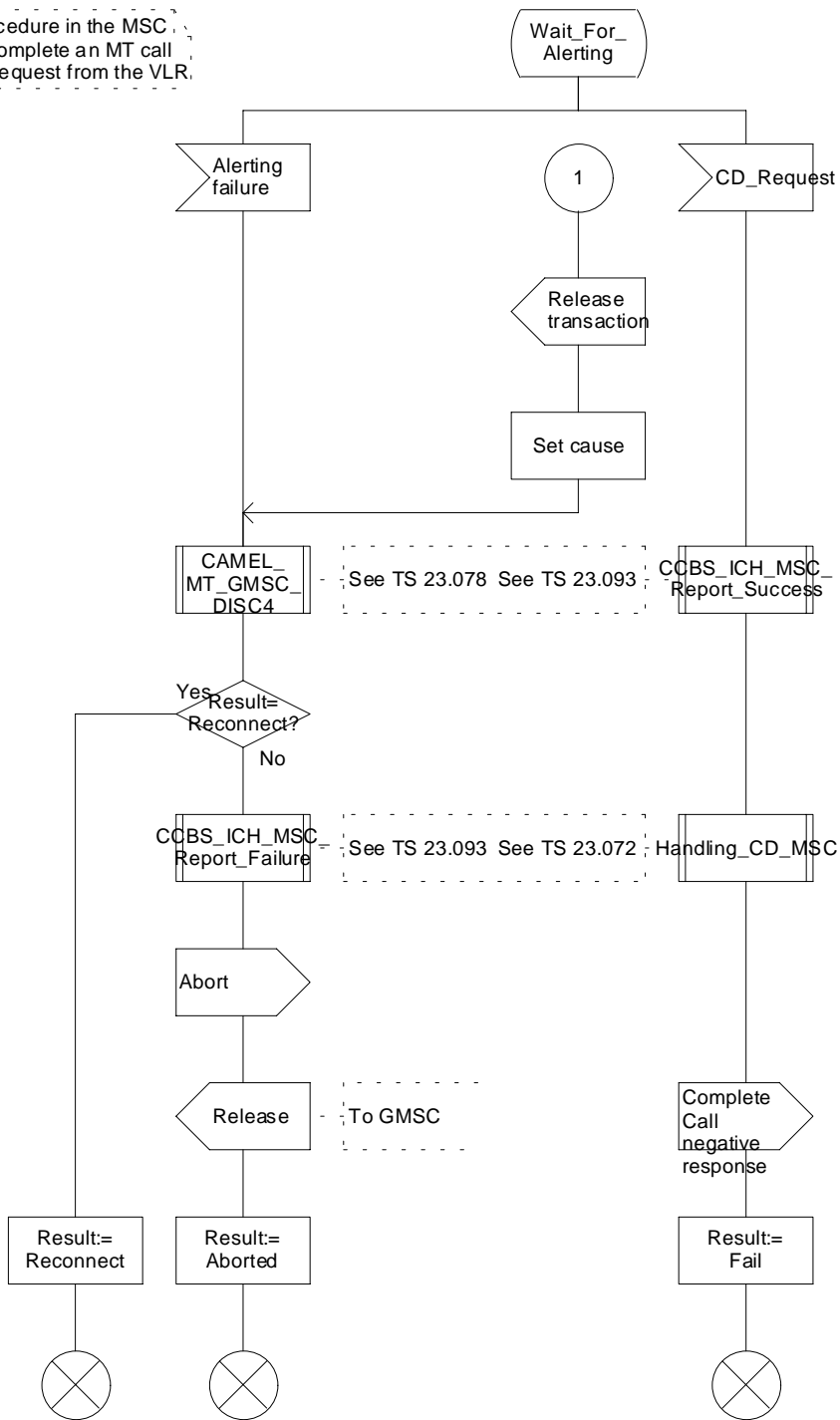
...

### Procedure Complete\_Call\_In\_MSC

### CCI\_MSC5(11)

Procedure in the MSC to complete an MT call on request from the VLR.

Signals to/from the left are to/from the BSS; signals to/from the right are to/from the VLR unless marked otherwise



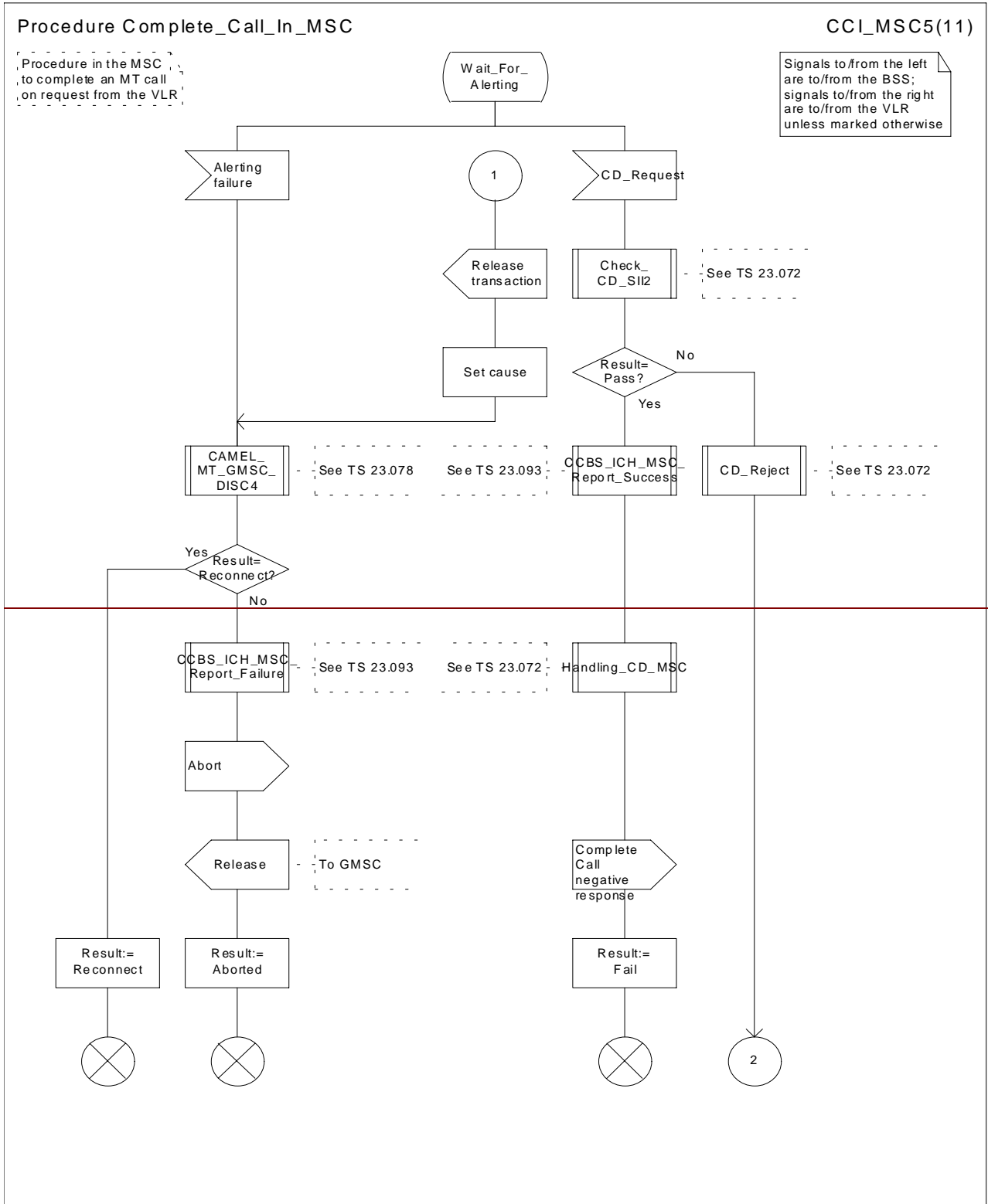


Figure 69e: Procedure Complete\_Call\_In\_MSC (sheet 5)

...

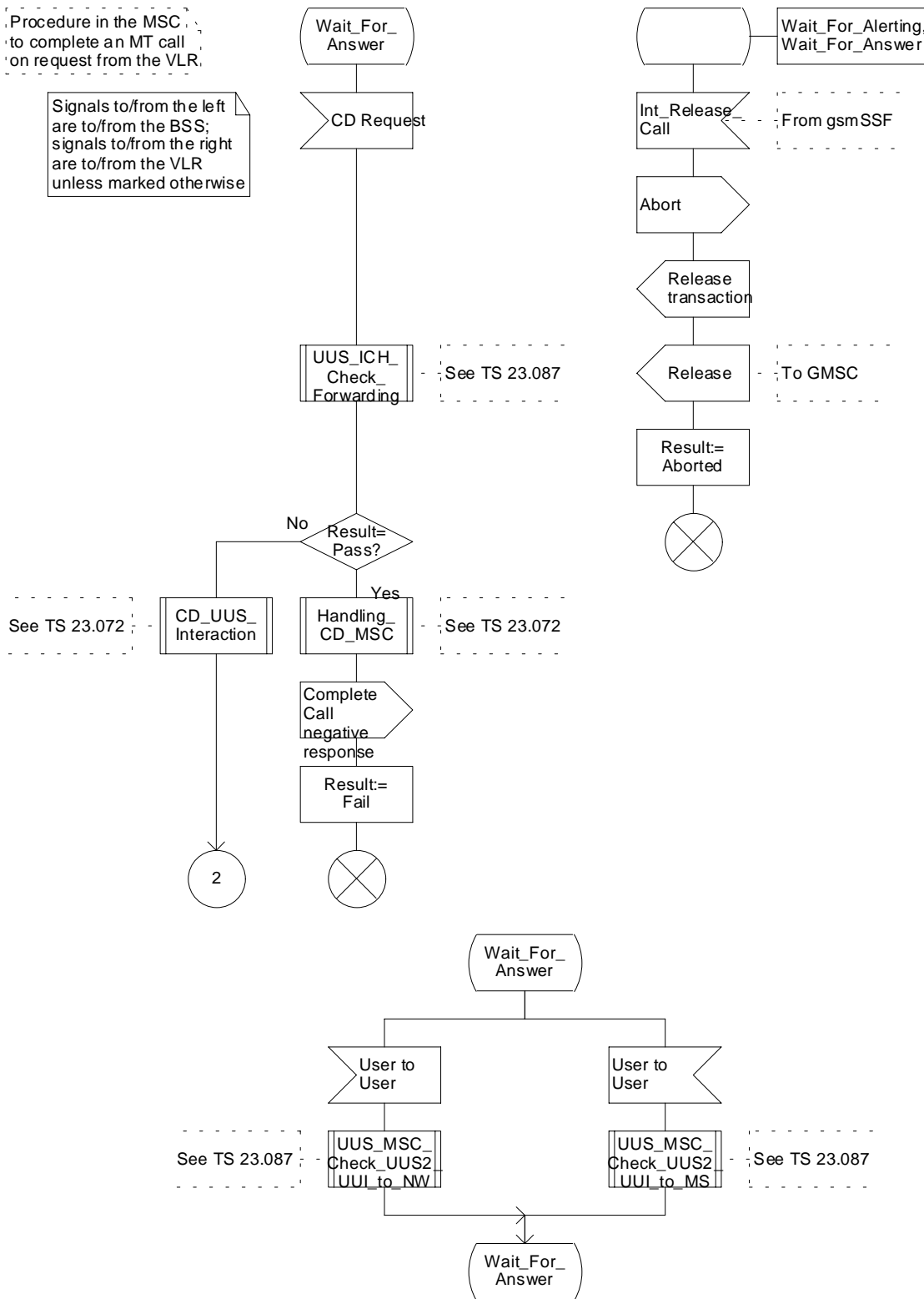


### Procedure Complete\_Call\_In\_MSC

### CCI\_MSC11(11)

Procedure in the MSC to complete an MT call on request from the VLR.

Signals to/from the left are to/from the BSS; signals to/from the right are to/from the VLR unless marked otherwise



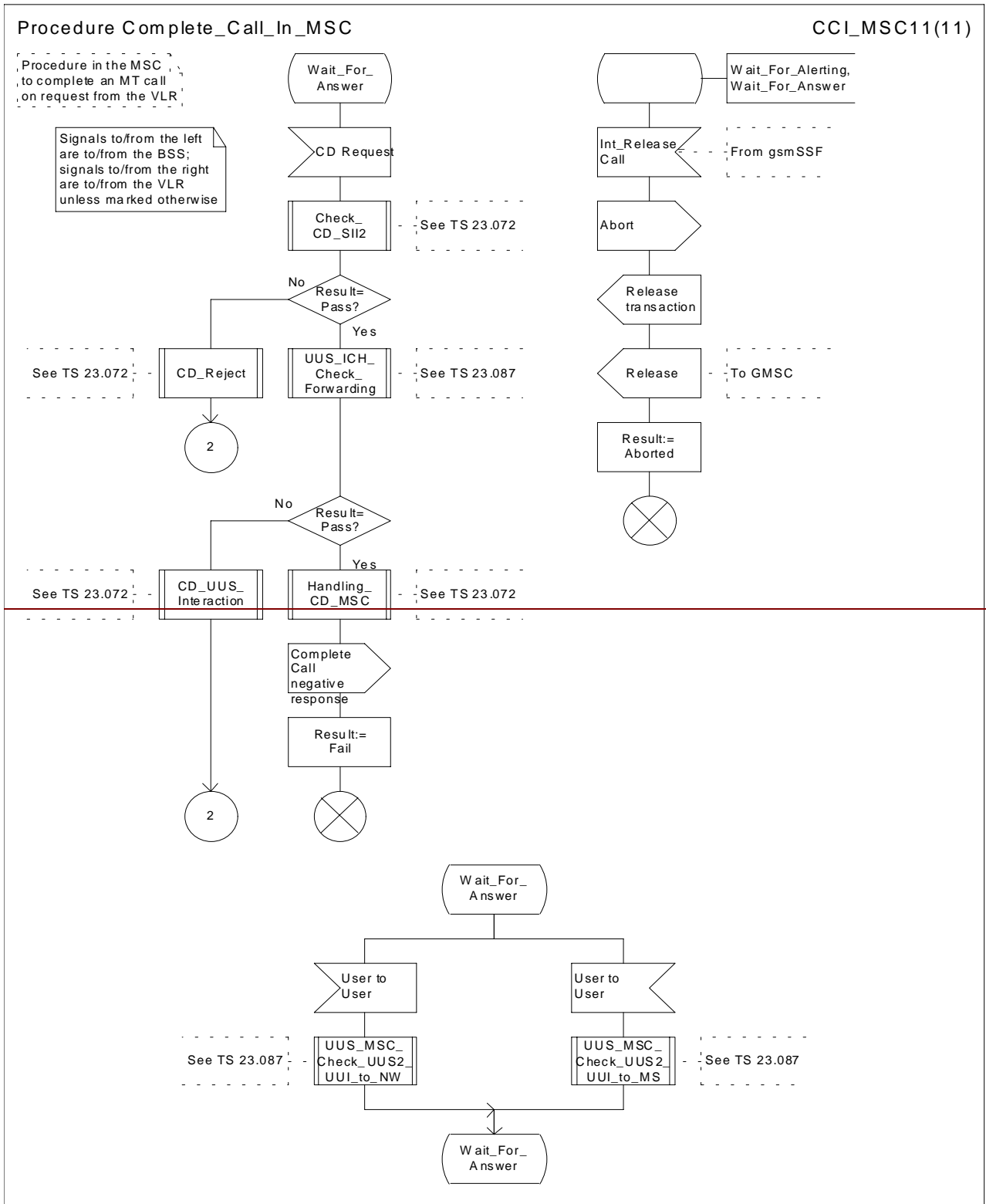


Figure 69k: Procedure Complete\_Call\_In\_MSC (sheet 11)

...

**\*\*\*\* Last Modified Section \*\*\*\***

## 7.3.2 Functional requirements of VLR

### 7.3.2.1 Process ICH\_VLR

...

Sheet x, sheet 5: the procedure CAMEL\_CHECK\_SII2\_CDTI is specific to CAMEL Phase 3 or later; it is specified in 3G TS 23.078 [12]. If the GMSC does not support CAMEL Phase 3 or later, processing continues from the "Yes" exit of the test "Result = Pass?".

...

### 7.3.2.6 Procedure Handle\_CFB

The test "Normal call busy" refers to the value of the indicator returned by the process MAF008.

The procedure CAMEL\_CHECK\_SII2\_CDTI is specific to CAMEL Phase 3 or later; it is specified in 3G TS 23.078 [12]. If the GMSC does not support CAMEL Phase 3 or later, processing continues from the "Yes" exit of the test "Result = Pass?".

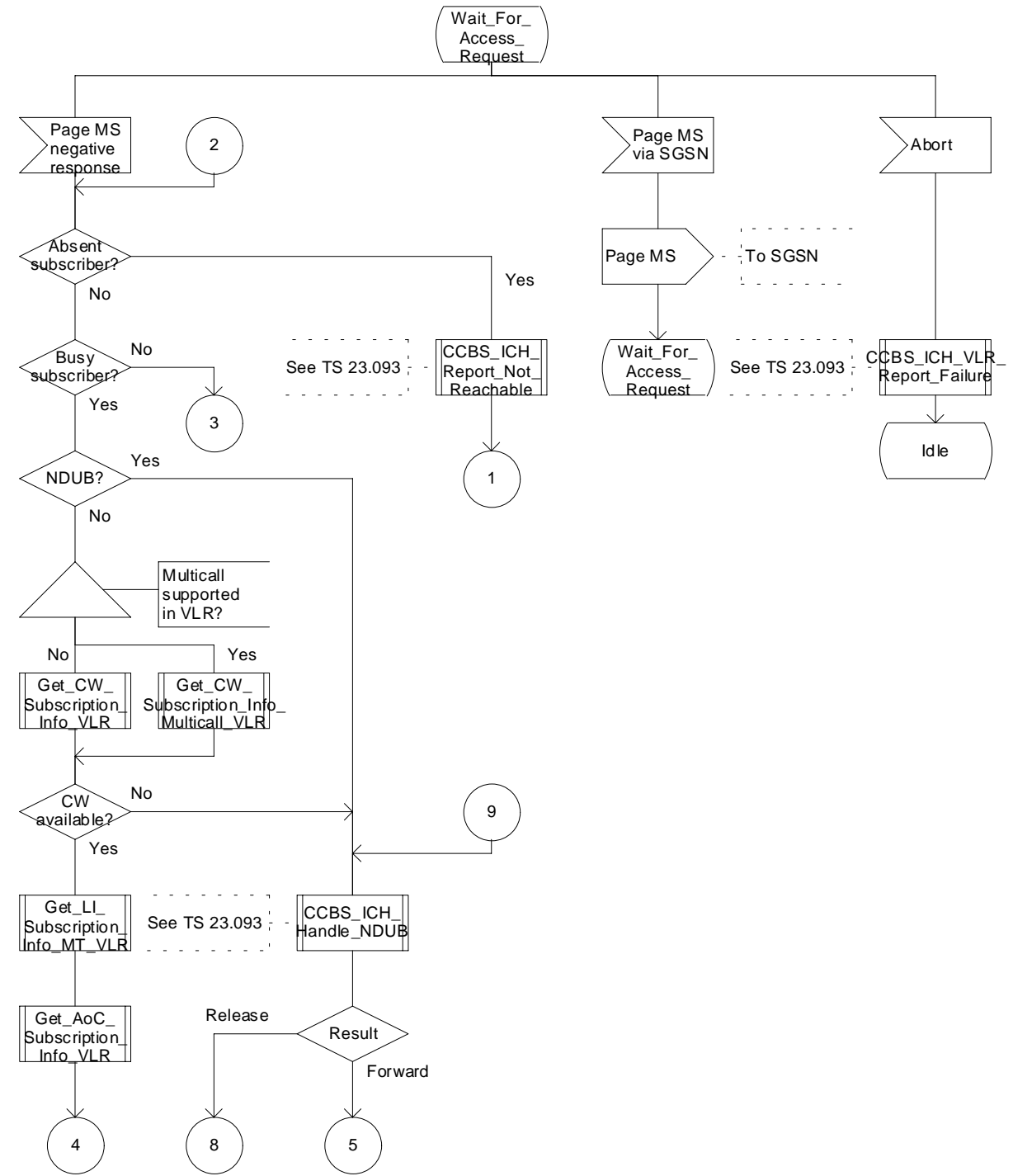
...

### Process ICH\_VLR

### ICH\_VLR3(8)

Process in VLRB to handle a request for information for an incoming (MT) call

Signals to/from the left are to/from the VMSC.



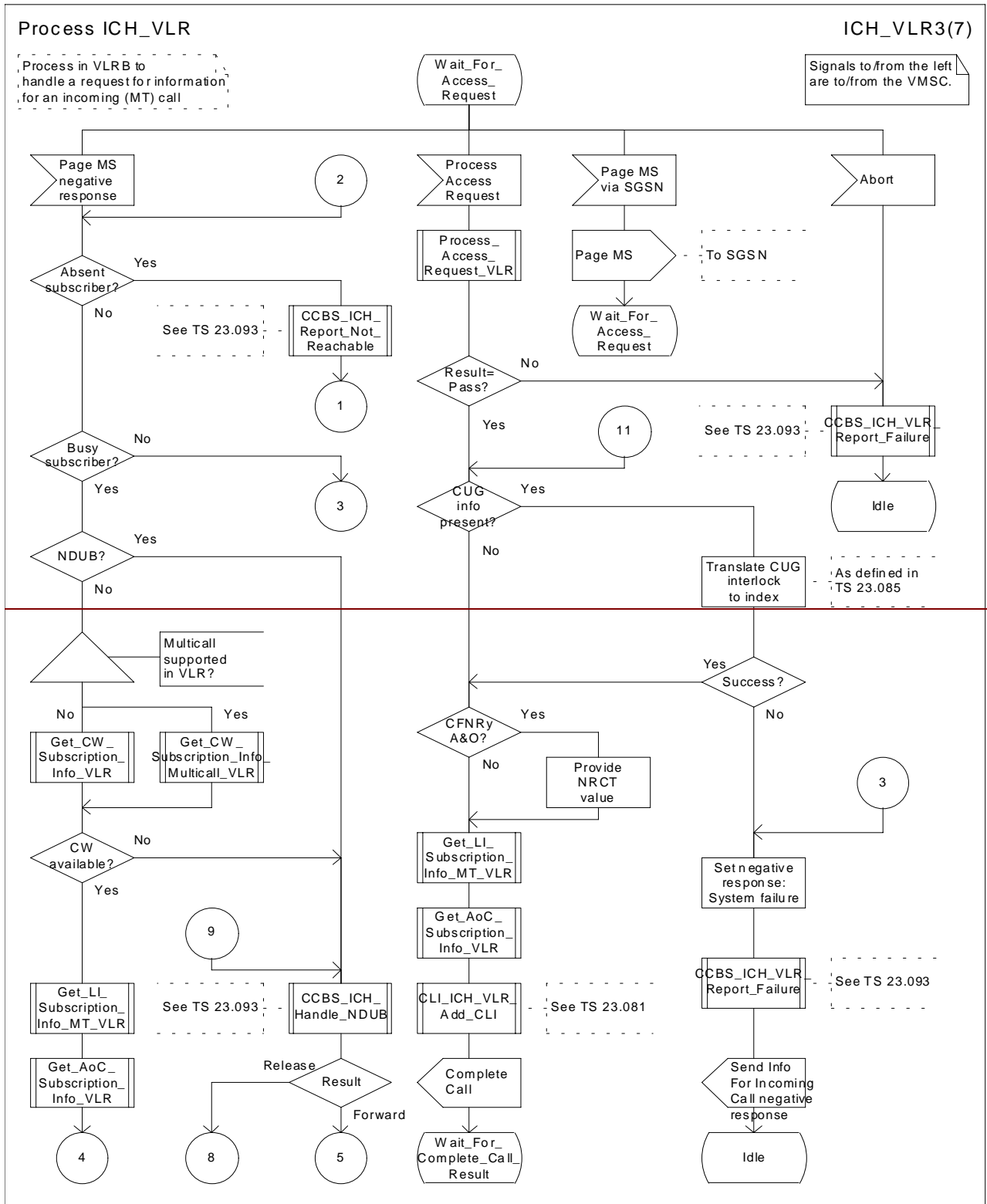
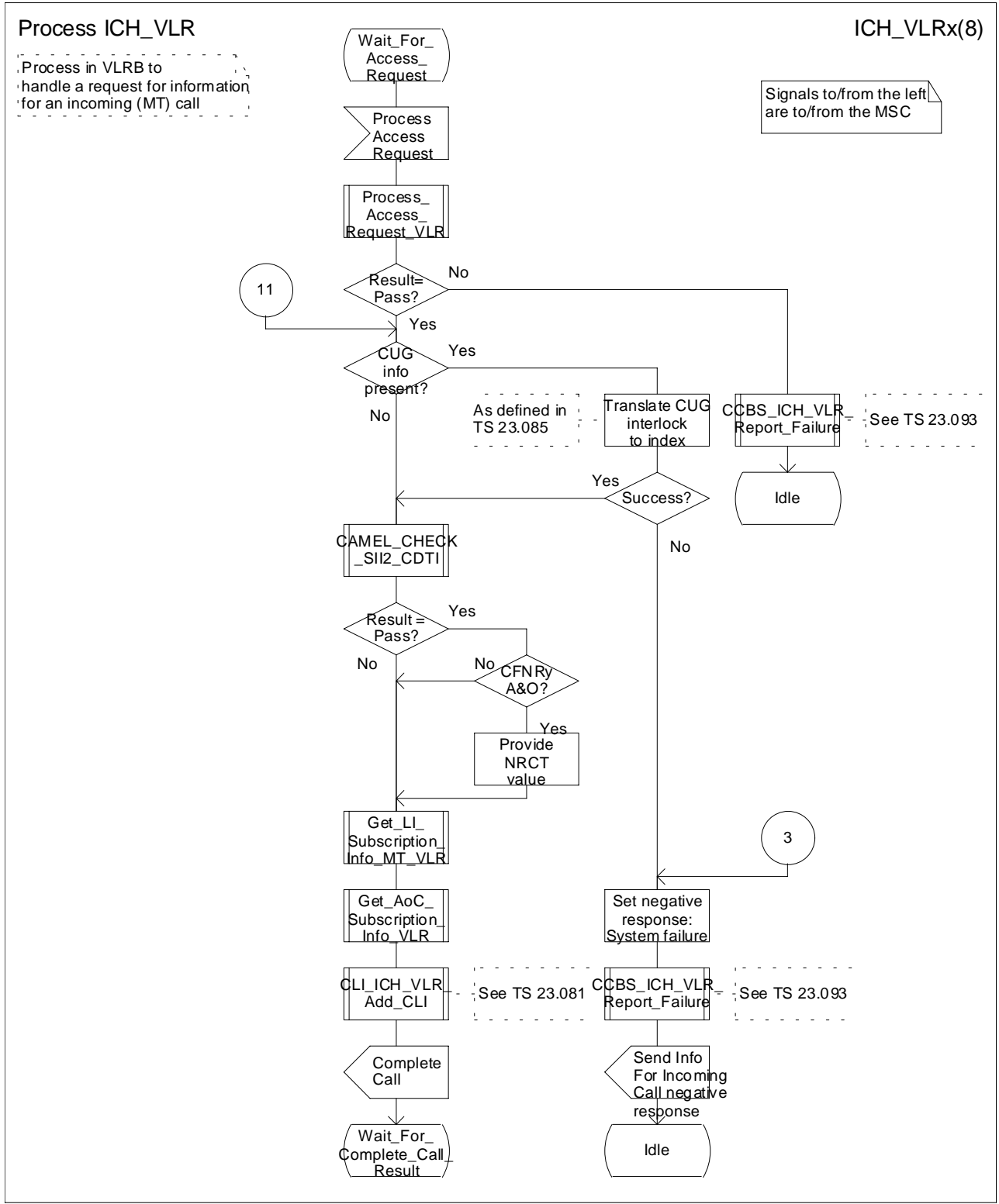


Figure 76c: Process ICH\_VLR (sheet 3)



**Figure 76x: Process ICH\_VLR (sheet x)**

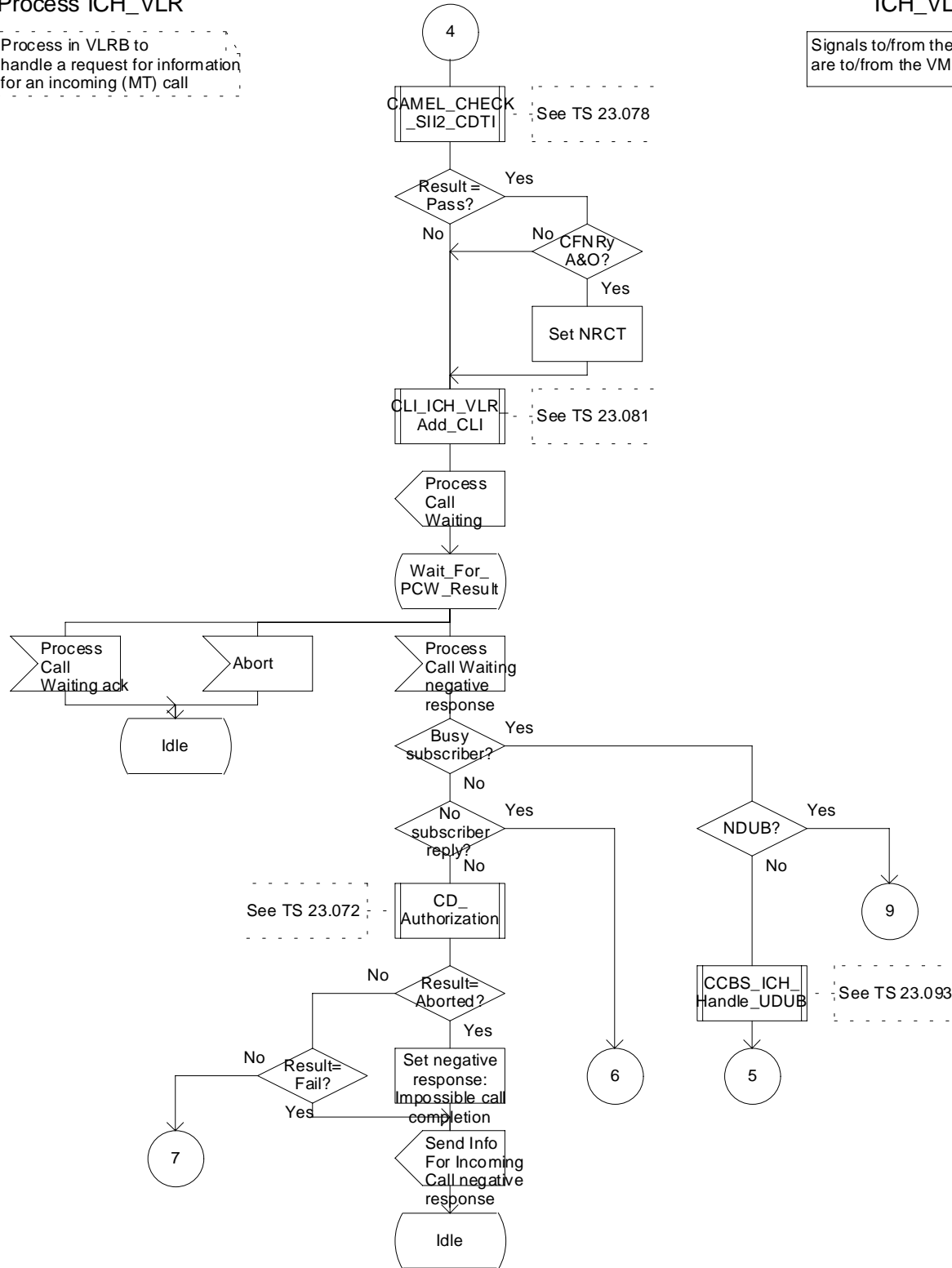
...

### Process ICH\_VLR

### ICH\_VLR5(8)

Process in VLRB to handle a request for information for an incoming (MT) call

Signals to/from the left are to/from the VMSC.



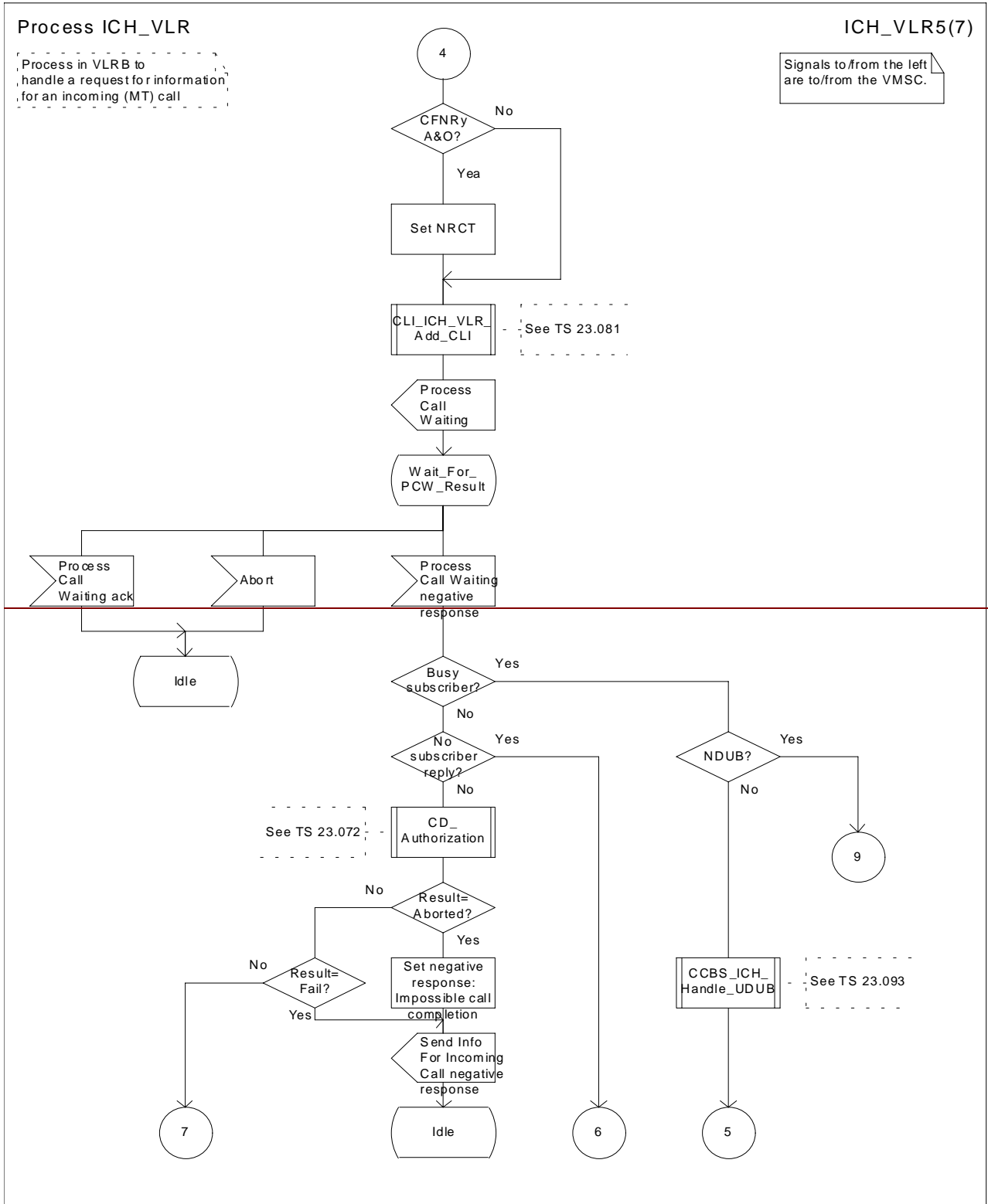


Figure 76e: Process ICH\_VLR (sheet 5)

...

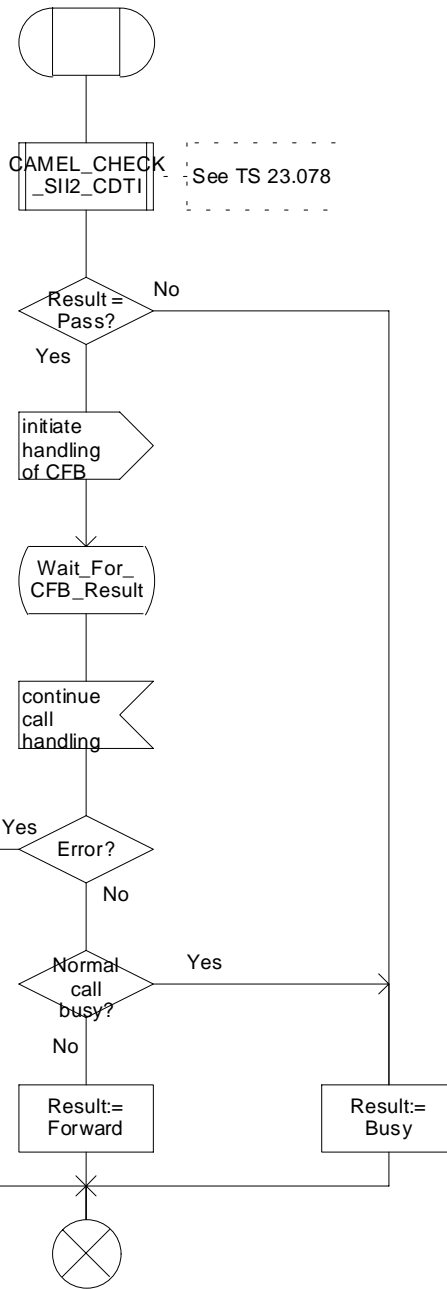


### Procedure Handle\_CFB

H\_CFB1(1)

Procedure in the VLR to handle Call Forwarding on Busy

Signals to/from the right are to/from the process MAF008



Procedure Handle\_CFB

H\_CFB1(1)

Procedure in the VLR to handle Call Forwarding on Busy

Signals to/from the right are to/from the process MAF008

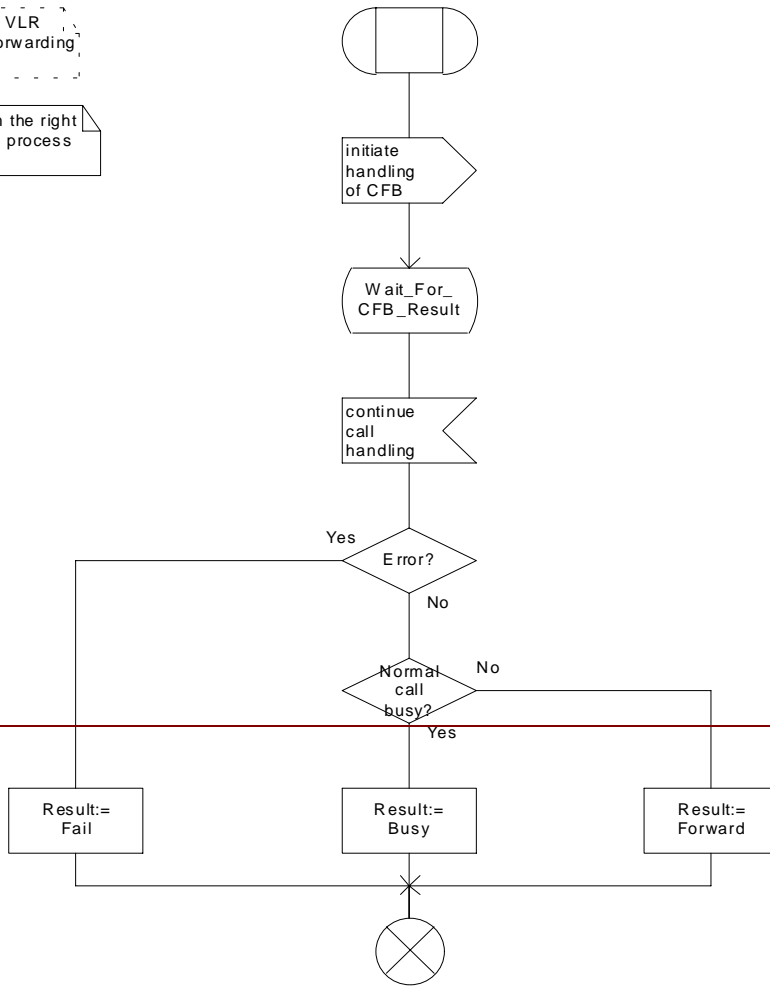


Figure 81: Procedure Handle\_CFB

...

\*\*\*\* End of Document \*\*\*\*

3GPP TSG-N4 #4  
Seattle, USA, 28 Aug - 1 Sep 2000

Tdoc 3GPP N4-000722

3GPP TSG-N2 #13  
Seattle, USA, 28 Aug - 1 Sep 2000

Tdoc 3GPP N2-000400

## CHANGE REQUEST

23.018 CR 061r2

Current Version: 3.5.0

For submission to: TSG-N#09

for approval   
for information

strategic   
non-strategic

**Proposed change affects:** (U)SIM  ME  UTRAN / Radio  Core Network

**Source:** N4 **Date:** 21<sup>st</sup> August 2000

**Subject:** Update of CAMEL references

**Work item:** CAMEL Phase 3

<b>Category:</b>	F Correction	<input checked="" type="checkbox"/>	<b>Release:</b>	Phase 2	<input type="checkbox"/>
	A Corresponds to a correction in an earlier release	<input type="checkbox"/>		Release 96	<input type="checkbox"/>
	B Addition of feature	<input type="checkbox"/>		Release 97	<input type="checkbox"/>
	C Functional modification of feature	<input type="checkbox"/>		Release 98	<input type="checkbox"/>
	D Editorial modification	<input type="checkbox"/>		Release 99	<input checked="" type="checkbox"/>
				Release 00	<input type="checkbox"/>

**Reason for change:** The references to CAMEL procedures were not well defined in TS 23.018. For example, some procedures were described as "specific to CAMEL Phase 2", but the procedures are also used for CAMEL Phase 3 etc. This CR clarifies the references to the CAMEL procedures.

**Clauses affected:** 7.1.1.3, 7.2.1.1, 7.2.1.2, 7.2.1.8, 7.2.2.1, 7.2.3.1, 7.3.1.1, 7.3.1.4, 7.3.1.5, 7.3.2.1.

<b>Other specs affected:</b>	Other 3G core specifications	<input type="checkbox"/>	→ List of CRs:	
	Other GSM core specifications	<input type="checkbox"/>	→ List of CRs:	
	MS test specifications	<input type="checkbox"/>	→ List of CRs:	
	BSS test specifications	<input type="checkbox"/>	→ List of CRs:	
	O&M specifications	<input type="checkbox"/>	→ List of CRs:	

**Other comments:**

- If the procedure exists for all phases of CAMEL, no phase is stated as, e.g., "This procedure is specific to CAMEL."
- If the procedure was introduced after CAMEL Phase 1, then the appropriate phase is stated as, e.g., "This procedure is specific to CAMEL Phase 2 or later."
- If the procedure is only used for a certain phase of CAMEL, then this is stated as, e.g., "This procedure is specific to CAMEL Phase 1."
- If a phase of CAMEL requires a new procedure call for a previously defined CAMEL procedure, this is stated as, e.g. "This procedure is called if the VMSC supports CAMEL Phase 3 or later."

<b>**** First Modified Section ****</b>
---

### 7.1.1.3 Procedure OG\_Call\_Setup\_MSC

...

Sheet 1: the procedure CAMEL\_N\_CSI\_CHECK~~heck~~\_N\_CSI\_MSC is specific to CAMEL Phase 3 or later, it is specified in 3G TS 23.078 [12].

...

Sheet 3: the procedure CAMEL\_OCH\_MSC\_INIT is specific to CAMEL; it is specified in 3G TS 23.078 [12]. If the VMSC does not support CAMEL, processing continues from the "Yes" exit of the test "Result=Pass?".

Sheet 3: the procedure CAMEL\_MO\_Dialled\_Services is specific to CAMEL phase 3 or later; it is specified in 3G TS 23.078 [12]. If the VMSC does not support CAMEL phase 3 or later, processing continues from the "Yes" exit of the test "Result=Pass?".

...

Sheet 3: the procedure CAMEL\_Store\_Destination\_Address is specific to CAMEL phase 3 or later; it is specified in 3G TS 23.078 [12].

...

Sheet 4, sheet 7: the procedures CAMEL\_Start\_TNRy and CAMEL\_Stop\_TNRy are specific to CAMEL phase 2 or later; they are specified in 3G TS 23.078 [12].

...

Sheet 5: the procedure CAMEL\_OCH\_MSC\_ANSWER is specific to CAMEL; it is specified in 3G TS 23.078 [12]. If the VMSC does not support CAMEL, processing continues from the "Yes" exit of the test "Result=Pass?".

...

Sheet 5: the task "Store CW treatment indicator for this call if received in SII2" is executed only if the VMSC supports CAMEL phase 3 or later.

...

Sheet 6, sheet 7: the procedures ~~CAMEL\_OCH\_MSC\_DISC3 and CAMEL\_OCH\_MSC\_DISC4 are~~ is specific to CAMEL Phase 1; ~~they are~~ it is specified in 3G TS 23.078 [12].

Sheet 6, sheet 7: the procedure CAMEL\_OCH\_MSC\_DISC4 is specific to CAMEL Phase 2 or later; it is specified in 3G TS 23.078 [12].

Sheet 6, sheet 6: the procedure CAMEL\_OCH\_MSC1 is specific to CAMEL phase 2 or later; it is specified in 3G TS 23.078 [12]. If the VMSC does not support CAMEL phase 2 or later, processing continues from the "No" exit of the test "Result=Reconnect?"

Sheet 6, sheet 7, sheet 9: the processing in the branch beginning with the Int\_Release\_Call input will occur only if the MSC supports CAMEL.

...

Sheet 8: the input signal TNRy expired and all the subsequent processing are specific to CAMEL phase 2 or later, and will occur only if the VMSC supports CAMEL phase 2 or later. The procedure CAMEL\_OCH\_MSC2 is specified in 3G TS 23.078 [12].

...

Sheet 9: the procedure CAMEL\_OCH\_MSC\_DISC1 is specific to CAMEL; it is specified in 3G TS 23.078 [12]. If the VMSC does not support CAMEL, processing continues from the "No" exit of the test "Result=CAMEL handling?".

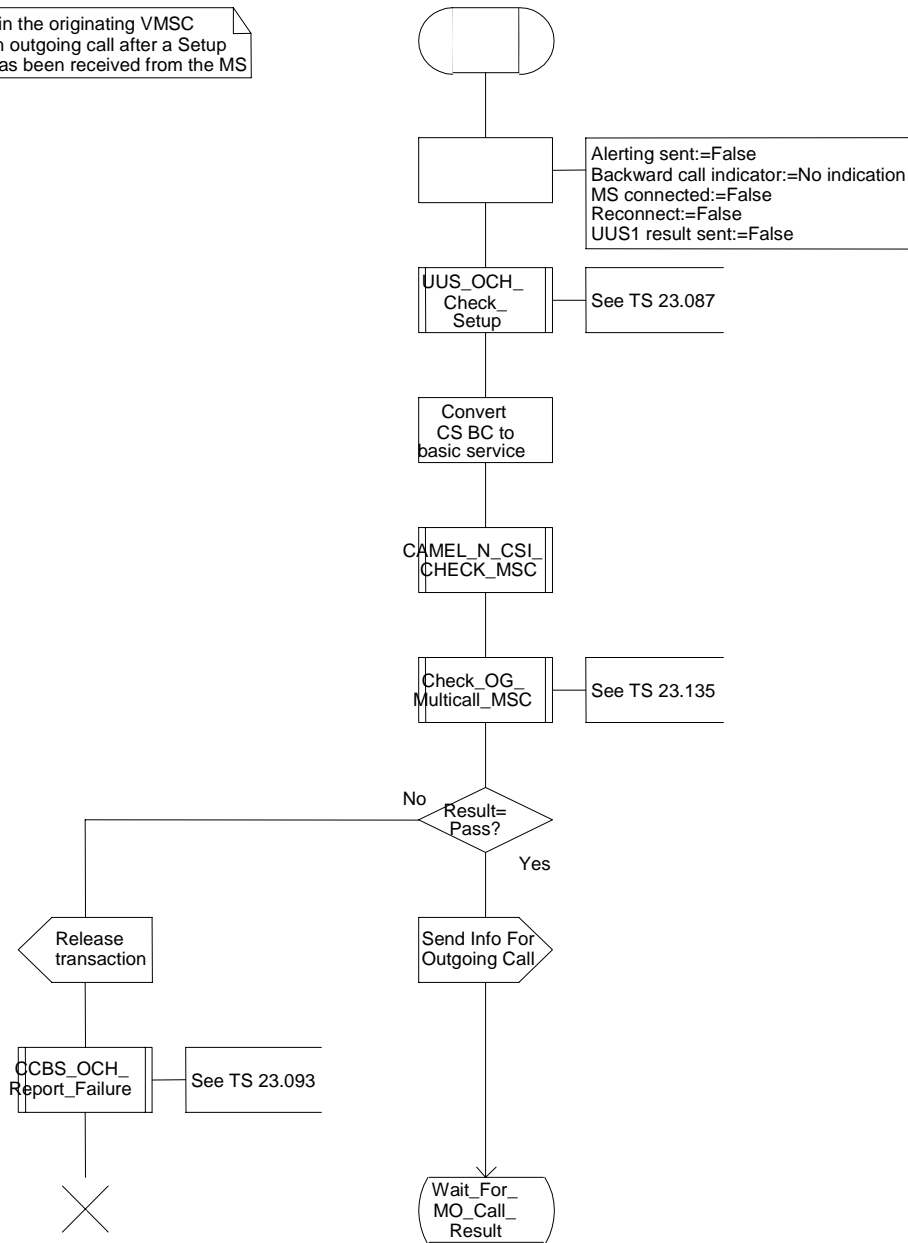
Sheet 9: the procedure CAMEL\_OCH\_MSC\_DISC2 is specific to CAMEL; it is specified in 3G TS 23.078 [12]. If the VMSC does not support CAMEL, processing continues from the "No" exit of the test "Result=CAMEL handling?".

...

### Procedure OG\_Call\_Setup\_MSC

OCS\_MSC1(9)

Procedure in the originating VMSC to set up an outgoing call after a Setup message has been received from the MS



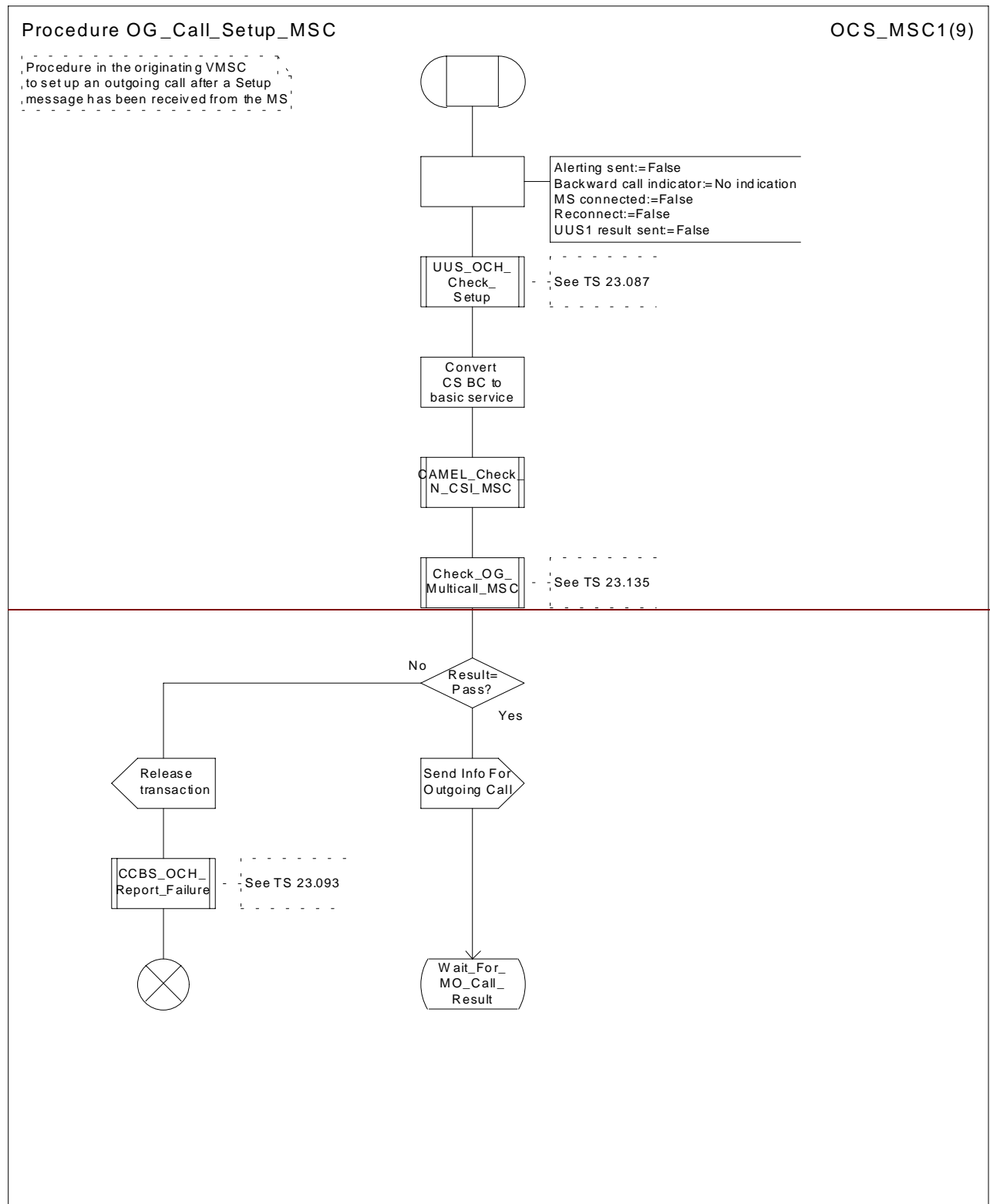


Figure 8a: Procedure Outgoing\_Call\_Setup\_MSC (sheet 1)

**\*\*\* Next Modified Section \*\*\***

## 7.2.1.1 Process MT\_GMSC

...

Sheet 1: the procedure CAMEL\_Set\_ORA\_Parameters is specific to CAMEL; it is specified in 3G TS 23.078 [12].

...

Sheet 1: the procedure CAMEL\_Store\_Destination\_Address is specific to CAMEL phase 3 or later; it is specified in 3G TS 23.078 [12].

...

Sheet 2: the procedures CAMEL\_Start\_TNRy and CAMEL\_Stop\_TNRy are specific to CAMEL phase 2 or later; they are specified in 3G TS 23.078 [12].

Sheet 2, sheet 3: the procedure CAMEL\_MT\_GMSC\_ANSWER is specific to CAMEL; it is specified in 3G TS 23.078 [12]. If the GMSC does not support CAMEL, processing continues from the "Pass" exit of the test "Result".

...

Sheet 5: the input signal TNRy expired and all the subsequent processing are specific to CAMEL phase 2 or later, and will occur only if the GMSC supports CAMEL phase 2 or later. The procedure CAMEL\_MT\_GMSC\_DISC5 is specified in 3G TS 23.078 [12].

Sheet 6: the procedures ~~CAMEL\_MT\_GMSC\_DISC3, CAMEL\_MT\_GMSC\_DISC4 and CAMEL\_MT\_GMSC\_DISC6~~ are is specific to CAMEL phase 1; ~~they are~~ it is specified in 3G TS 23.078 [12].

Sheet 6: the procedures CAMEL\_MT\_GMSC\_DISC4 and CAMEL\_MT\_GMSC\_DISC6 are specific to CAMEL phase 2 or later; they are specified in 3G TS 23.078 [12].

...

Sheet 6, sheet 7: the processing in the branch beginning with the Int\_Release\_Call input will occur only if the MSC supports CAMEL.

Sheet 7: the procedure CAMEL\_MT\_GMSC\_DISC1 is specific to CAMEL; it is specified in 3G TS 23.078 [12]. If the GMSC does not support CAMEL, processing continues from the "No" exit of the test "Result=CAMEL handling?".

Sheet 7: the procedure CAMEL\_MT\_GMSC\_DISC2 is specific to CAMEL; it is specified in 3G TS 23.078 [12]. If the GMSC does not support CAMEL, processing continues from the "Normal handling" exit of the test "Result?".

~~Sheet 7: in the upper subtree, the processing in the branch beginning with the Int\_Release\_Call input will occur only if the GMSC supports CAMEL.~~

...

**\*\*\*\* Next Modified Section \*\*\*\***

### 7.2.1.2 Procedure Obtain\_Routeing\_Address

...

Sheet 3: the procedure CAMEL\_MT\_GMSC\_INIT is specific to CAMEL; it is specified in 3G TS 23.078 [12].

Sheet 3: the procedure CAMEL\_MT\_GMSC\_Notify\_CF is specific to CAMEL phase 2 or later; it is specified in 3G TS 23.078 [12]. If the GMSC does not support CAMEL phase 2 or later, processing continues from the "Continue" exit of the test "Result".

...

Sheet 4: the procedures ~~CAMEL\_MT\_GMSC\_DISC3 and CAMEL\_MT\_MSC\_DISC4~~ are is specific to CAMEL phase 1; ~~they are it is~~ specified in 3G TS 23.078 [12].

Sheet 4: the procedure CAMEL\_MT\_GMSC\_DISC4 is specific to CAMEL Phase 2 or later; it is specified in 3G TS 23.078 [12].

...

**\*\*\*\* Next Modified Section \*\*\*\***

### 7.2.1.8 Process MT\_CF\_MSC

Sheet 1: the procedure CAMEL\_CF\_MSC\_INIT is specific to CAMEL; it is specified in 3G TS 23.078 [12]. If the MSC does not support CAMEL, processing continues from the "Yes" exit of the test "Result=Pass?".

Sheet 1, sheet 4: the procedure CAMEL\_CF\_Dialled\_Services is specific to CAMEL phase 3 or later; it is specified in 3G TS 23.078 [12]. If the MSC does not support CAMEL phase 3 or later, processing continues from the "Pass" exit of the test "Result?".

Sheet 1, sheet 3, sheet 4: the procedure CAMEL\_OCH\_MSC1 is specific to CAMEL phase 2 or later; it is specified in 3G TS 23.078 [12]. If the MSC does not support CAMEL phase 2 or later, processing continues from the "Yes" exit of the test "Result=Reconnect?".

...

Sheet 1: the procedure CAMEL\_Store\_Destination\_Address is specific to CAMEL phase 3 or later; it is specified in 3G TS 23.078 [12].

Sheet 1, sheet 3: the procedures ~~CAMEL\_OCH\_MSC\_DISC3 and CAMEL\_OCH\_MSC\_DISC4~~ are is specific to CAMEL phase 1; ~~they are it is~~ specified in 3G TS 23.078 [12].

Sheet 1, sheet 3: the procedure CAMEL\_OCH\_MSC\_DISC4 is specific to CAMEL Phase 2 or later; it is specified in 3G TS 23.078 [12].

Sheet 2: the procedures CAMEL\_Start\_TNRy and CAMEL\_Stop\_TNRy are specific to CAMEL phase 2 or later; they are specified in 3G TS 23.078 [12].

Sheet 2: the procedure CAMEL\_CF\_MSC\_ANSWER is specific to CAMEL; it is specified in 3G TS 23.078 [12]. If the MSC does not support CAMEL, processing continues from the "Yes" exit of the test "Result=Pass?".

...

~~Sheet 3: the procedures CAMEL\_OCH\_MSC\_DISC3 and CAMEL\_OCH\_MSC\_DISC4 are specific to CAMEL; they are specified in 3G TS 23.078 [12].~~

Sheet 3: the procedure CAMEL\_Stop\_TNRy is specific to CAMEL phase 2 or later; it is specified in 3G TS 23.078 [12].



Sheet 3: the processing in the branch beginning with the Int\_O\_Release input will occur only if the MSC supports CAMEL.

Sheet 4: the input signal TNRY expired and all the subsequent processing are specific to CAMEL phase 2 or later, and will occur only if the GMSC supports CAMEL phase 2 or later. The procedure CAMEL\_OCH\_MSC2 is specified in 3G TS 23.078 [12].

Sheet 5: the procedure CAMEL\_OCH\_MSC\_DISC1 is specific to CAMEL; it is specified in 3G TS 23.078 [12]. If the MSC does not support CAMEL, processing continues from the "No" exit of the test "Result=CAMEL handling?".

Sheet 5: the procedure CAMEL\_OCH\_MSC\_DISC2 is specific to CAMEL; it is specified in 3G TS 23.078 [12]. If the MSC does not support CAMEL, processing continues from the "No" exit of the test "Result=Reconnect?" .

Sheet 5: the processing in the branch beginning with the Int\_O\_Release input will occur only if the MSC supports CAMEL.

...

**\*\*\*\* Next Modified Section \*\*\*\***

### 7.2.2.1 Process SRI\_HLR

...

Sheet 1: the procedure CAMEL\_HLR\_INIT is specific to CAMEL; it is specified in 3G TS 23.078 [12]. If the HLR does not support CAMEL, processing continues from the "No" exit of the test "Result=Fail?".

...

Sheet 2: the procedure CAMEL\_CSI\_Check\_HLR is specific to CAMEL; it is specified in 3G TS 23.078 [12]. If the HLR does not support CAMEL, processing continues from the "No" exit of the test "Result=CSI active?".

...

Sheet 4: the procedure CAMEL\_CSI\_Check\_HLR is specific to CAMEL; it is specified in 3G TS 23.078 [12]. If the HLR does not support CAMEL, processing continues from the "No" exit of the test "Result=CSI active?".

Sheet 4: the procedures CAMEL\_T\_CSI\_CHECK\_HLR and CAMEL\_O\_CSI\_CHECK\_HLR are specific to CAMEL; they are specified in 3G TS 23.078 [12].

Sheet 4: the procedure CAMEL\_D\_CSI\_CHECK\_HLR is specific to CAMEL phase 3 or later; it is specified in 3G TS 23.078 [12].

**\*\*\*\* Next Modified Section \*\*\*\***

### 7.2.3.1 Process PRN\_VLR

...

Sheet 2, sheet 3, sheet 6, sheet 7: the procedure CAMEL\_SET\_SOA is specific to CAMEL; it is specified in 3G TS 23.078 [12].

...

**\*\*\* Next Modified Section \*\*\*****7.3.1.1 Process ICH\_MSC**

...

Sheet 1: the handling starting with the input signal "Continue CAMEL handling" is specific to CAMEL phase 3 or later. If the VMSC does not support CAMEL phase 3 or later, this signal will not be received from the VLR.

Sheet 1: the procedure CAMEL\_ICH\_MSC\_INIT is specific to CAMEL phase 3 or later; it is specified in 3G TS 23.078 [12].

...

Sheet 2, sheet 3, sheet 5, sheet 7, sheet 8, sheet 10: the procedure CAMEL\_MT\_GMSC\_DISC4 is ~~specific to called if the VMSC supports~~ CAMEL phase 3 or later; it is specified in 3G TS 23.078 [12]. If the VMSC does not support CAMEL phase 3 or later, processing continues from the "No" exit of the test "Result=Reconnect?".

Sheet 2, sheet 4, sheet 7, sheet 8, sheet 10: the procedure CAMEL\_MT\_GMSC\_DISC6 is ~~specific to called if the VMSC supports~~ CAMEL phase 3 or later; it is specified in 3G TS 23.078 [12].

Sheet 3: the procedure CAMEL\_MT\_GMSC\_DISC5 is ~~specific to called if the VMSC supports~~ CAMEL phase 3 or later; it is specified in 3G TS 23.078 [12]. If the VMSC does not support CAMEL phase 3 or later, processing continues from the "No" exit of the test "Result=Reconnect?".

Sheet 3: the task "Store CW treatment indicator for this call if received in SII2" is executed only if the VMSC supports CAMEL phase 3 or later.

Sheet 3: If the VMSC does not support CAMEL phase 3 or later, the procedure Complete\_Call\_In\_MSC and the procedure Process\_Call\_Waiting\_MSC will not return a "Reconnect" result.

...

Sheet 4: the procedure CAMEL\_Check\_ORLCF\_VMSC is specific to CAMEL phase 2 or later; it is specified in 3G TS 23.078 [12].

- If the VLR does not support CAMEL or no CAMEL information is available for the subscriber, then ORLCF may take place ('ORLCF' result from CAMEL\_Check\_ORLCF\_VMSC).
- If CAMEL information is available for the subscriber and the GMSC supports the required CAMEL phase, then ORLCF may take place. The Resume Call Handling request shall include the relevant CAMEL information ('ORLCF' result from CAMEL\_Check\_ORLCF\_VMSC).
- If CAMEL information is available for the subscriber but the GMSC does not support the required CAMEL phase, then ORLCF shall not take place ('VMSCCF' result from CAMEL\_Check\_ORLCF\_VMSC).

...

Sheet 5: the procedure CAMEL\_MT\_VMSC\_Notify\_CF is specific to CAMEL phase 3 or later; it is specified in 3G TS 23.078 [12].

Sheet 5: If the VMSC does not support CAMEL phase 3 or later, processing starts with the possible call of the procedure CCBS\_Check\_Last\_Call.

...

Sheet 5: the procedure CAMEL\_Store\_Destination\_Address is specific to CAMEL phase 3 or later; it is specified in 3G TS 23.078 [12].

...

Sheet 6: The processing on this sheet is specific to CAMEL phase 3 or later. If the VMSC does not support CAMEL phase 3 or later, the input signal Int\_Release Call will not be received.

Sheet 7: the procedure CAMEL\_MT\_GMSC\_ANSWER is ~~specific to~~ called if the VMSC supports CAMEL phase 3 or later; it is specified in 3G TS 23.078 [12]. If the VMSC does not support CAMEL phase 3 or later, processing continues from the "No" exit of the test "Result=Reconnect?".

...

Sheet 11, sheet 12: the procedure CAMEL\_MT\_GMSC\_DISC1 is ~~specific to~~ called if the VMSC supports CAMEL phase 3 or later; it is specified in 3G TS 23.078 [12].

Sheet 11, sheet 12: the procedure CAMEL\_MT\_GMSC\_DISC2 is ~~specific to~~ called if the VMSC supports CAMEL phase 3 or later; it is specified in 3G TS 23.078 [12]. If the VMSC does not support CAMEL phase 3 or later, processing continues from the "No" exit of the test "Result=Reconnect?".

...

Sheet 13: The processing on this sheet is specific to CAMEL phase 3 or later. If the VMSC does not support CAMEL phase 3 or later, the input signal Int\_Release Call will not be received.

**\*\*\* Next Modified Section \*\*\***

#### 7.3.1.4 Procedure Complete\_Call\_In\_MSC

...

Sheet 2, sheet 3, sheet 4, sheet 5, sheet 6, sheet 7: the procedure CAMEL\_MT\_GMSC\_DISC4 is ~~specific to~~ called if the VMSC supports CAMEL phase 3 or later; it is specified in 3G TS 23.078 [12]. If the VMSC does not support CAMEL phase 3 or later, processing continues from the "No" exit of the test "Result=Reconnect?".

Sheet 2, sheet 3, sheet 6, sheet 9, sheet 10: the procedure CAMEL\_MT\_GMSC\_DISC6 is ~~specific to~~ called if the VMSC supports CAMEL phase 3 or later; it is specified in 3G TS 23.078 [12].

...

Sheet 3: the procedure CAMEL\_Start\_TNRy is ~~specific to~~ called if the VMSC supports CAMEL phase 3 or later; it is specified in 3G TS 23.078 [12].

...

Sheet 4, sheet 7: the procedure CAMEL\_MT\_GMSC\_ANSWER is ~~specific to~~ called if the VMSC supports CAMEL phase 3 or later; it is specified in 3G TS 23.078 [12]. If the VMSC does not support CAMEL phase 3 or later, processing continues from the "Yes" exit of the test "Result=Pass?".

...

Sheet 6: the procedure CAMEL\_Stop\_TNRy is ~~specific to~~ called if the VMSC supports CAMEL phase 3 or later; it is specified in 3G TS 23.078 [12].

...

Sheet 8: the input signal "CAMEL TNRy expired" will be received only if the VMSC supports CAMEL phase 3 or later.

...

**\*\*\* Next Modified Section \*\*\***

## 7.3.1.5 Procedure Process\_Call\_Waiting\_MSC

...

Sheet 2: the procedure CAMEL\_Start\_TNRy is ~~specific to~~ called if the VMSC supports CAMEL phase 3 or later; it is specified in 3G TS 23.078 [12].

...

Sheet 2, sheet 3, sheet 6, sheet 7: the procedure CAMEL\_MT\_GMSC\_DISC4 is ~~specific to~~ called if the VMSC supports CAMEL phase 3 or later; it is specified in 3G TS 23.078 [12]. If the VMSC does not support CAMEL phase 3 or later, processing continues from the "No" exit of the test "Result=Reconnect?".

...

Sheet 4, sheet 8: the procedure CAMEL\_MT\_GMSC\_DISC6 is ~~specific to~~ called if the VMSC supports CAMEL phase 3 or later; it is specified in 3G TS 23.078 [12].

Sheet 5: the procedure CAMEL\_Stop\_TNRy is ~~specific to~~ called if the VMSC supports CAMEL phase 3 or later; it is specified in 3G TS 23.078 [12].

...

Sheet 6: the procedure CAMEL\_MT\_GMSC\_ANSWER is ~~specific to~~ called if the VMSC supports CAMEL phase 3 or later; it is specified in 3G TS 23.078 [12]. If the VMSC does not support CAMEL phase 3 or later, processing continues from the "Yes" exit of the test "Result=Pass?" on sheet 6.

...

Sheet 7: the input signal "CAMEL TNRy expired" will be received only if the VMSC supports CAMEL phase 3 or later.

Sheet 7: the procedure CAMEL\_MT\_GMSC\_DISC5 is ~~specific to~~ called if the VMSC supports CAMEL phase 3 or later; it is specified in 3G TS 23.078 [12]. If the VMSC does not support CAMEL phase 3 or later, processing continues from the "No" exit of the test "Result=Reconnect?".

...

**\*\*\* Last Modified Section \*\*\***

## 7.3.2.1 Process ICH\_VLR

...

Sheet 1: the procedure CAMEL\_ICH\_VLR is specific to CAMEL phase 3 or later; it is specified in 3G TS 23.078 [12]. If the VLR does not support CAMEL phase 3 or later, processing continues from the possible call of the procedure CCBS\_ICH\_Set\_CCBS\_Call\_Indicator.

...

Sheet 7: the procedures CAMEL\_O\_CSI\_Check\_VLR~~;~~ and CAMEL\_D\_CSI\_Check\_VLR are specific to CAMEL phase 3 or later; ~~they~~ they are specified in 3G TS 23.078 [12].

**\*\*\* End of Document \*\*\***

3GPP TSG-N4 #4  
Seattle, USA, 28 Aug - 1 Sep 2000

Tdoc 3GPP N4-000770

3GPP TSG-N2 #4  
Seattle, USA, 28 Aug - 1 Sep 2000

Tdoc 3GPP N2-000432

## CHANGE REQUEST

23.018 CR 063r1

Current Version: 3.5.0

For submission to: TSG-N#09

for approval   
for information

strategic   
non-strategic

**Proposed change affects:** (U)SIM  ME  UTRAN / Radio  Core Network

**Source:** N4 **Date:** 31<sup>st</sup> August 2000

**Subject:** Corection of procedure Obtain\_Routeing\_Address for the reconnect case

**Work item:** CAMEL Phase 3

<b>Category:</b>	F Correction	<input type="checkbox"/>	<b>Release:</b>	Phase 2	<input type="checkbox"/>
	A Corresponds to a correction in an earlier release	<input checked="" type="checkbox"/>		Release 96	<input type="checkbox"/>
	B Addition of feature	<input type="checkbox"/>		Release 97	<input type="checkbox"/>
	C Functional modification of feature	<input type="checkbox"/>		Release 98	<input type="checkbox"/>
	D Editorial modification	<input type="checkbox"/>		Release 99	<input checked="" type="checkbox"/>
				Release 00	<input type="checkbox"/>

**Reason for change:** If the CAMEL processing leads to a redirection of the call to a different destination, this has to be made visible to the procedure CAMEL\_MT\_GMSC\_INIT

**Clauses affected:** Figure 36c

<b>Other specs affected:</b>	Other 3G core specifications	<input type="checkbox"/>	→ List of CRs:	
	Other GSM core specifications	<input type="checkbox"/>	→ List of CRs:	
	MS test specifications	<input type="checkbox"/>	→ List of CRs:	
	BSS test specifications	<input type="checkbox"/>	→ List of CRs:	
	O&M specifications	<input type="checkbox"/>	→ List of CRs:	

**Other comments:** Figures 36a, 36b and 36d are included unchanged for information

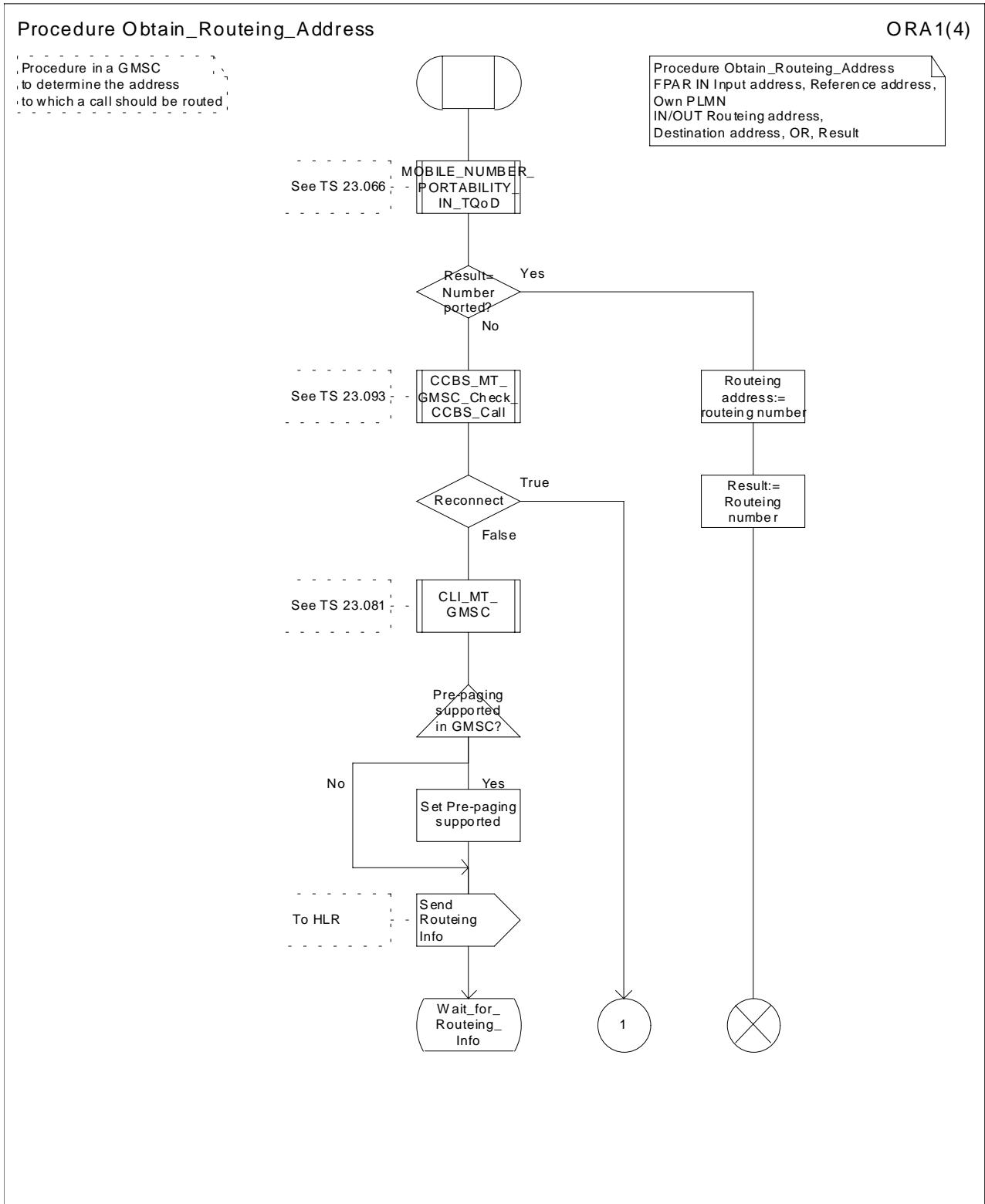


Figure 36a: Procedure Obtain\_Routeing\_Address (sheet 1)

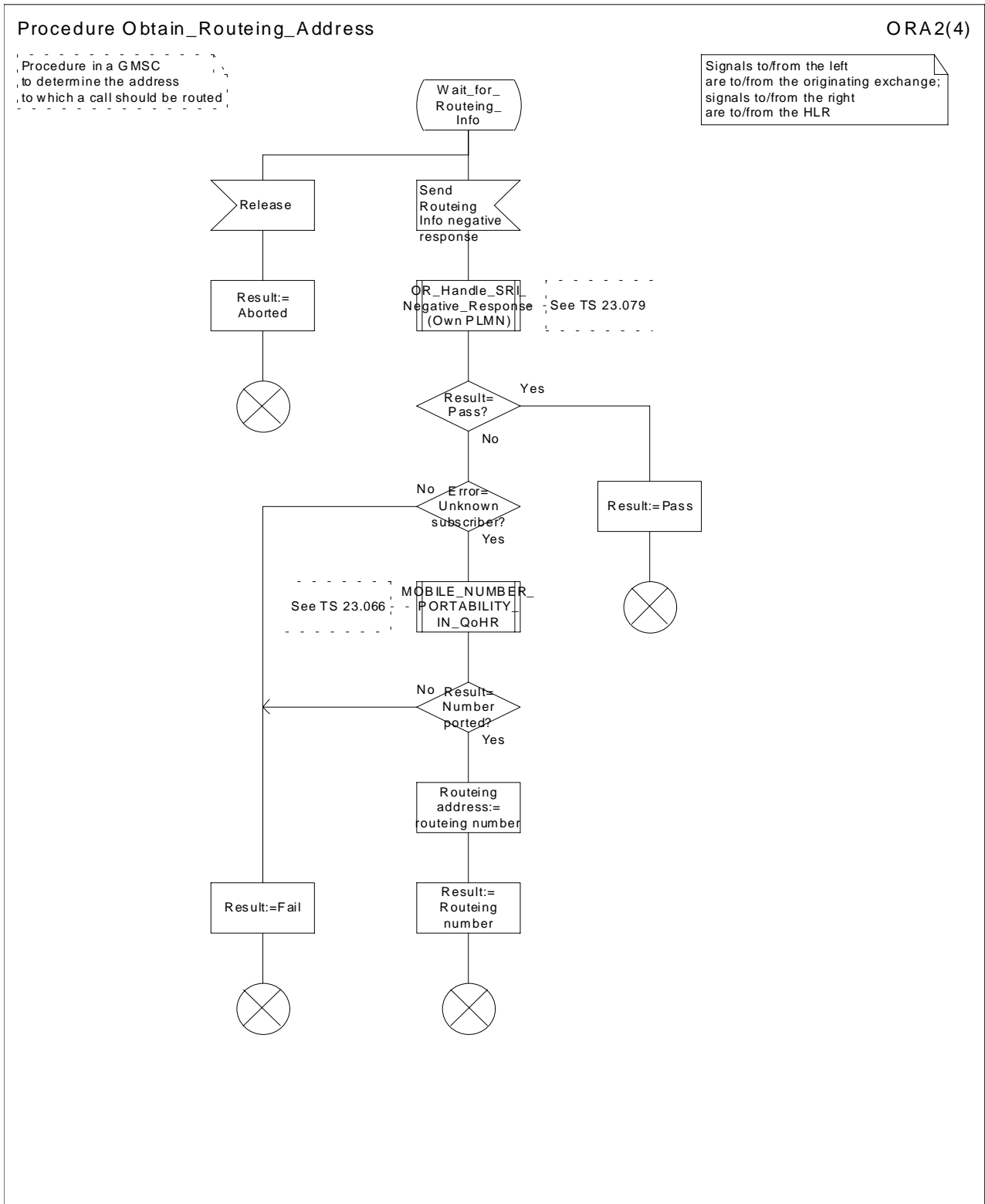
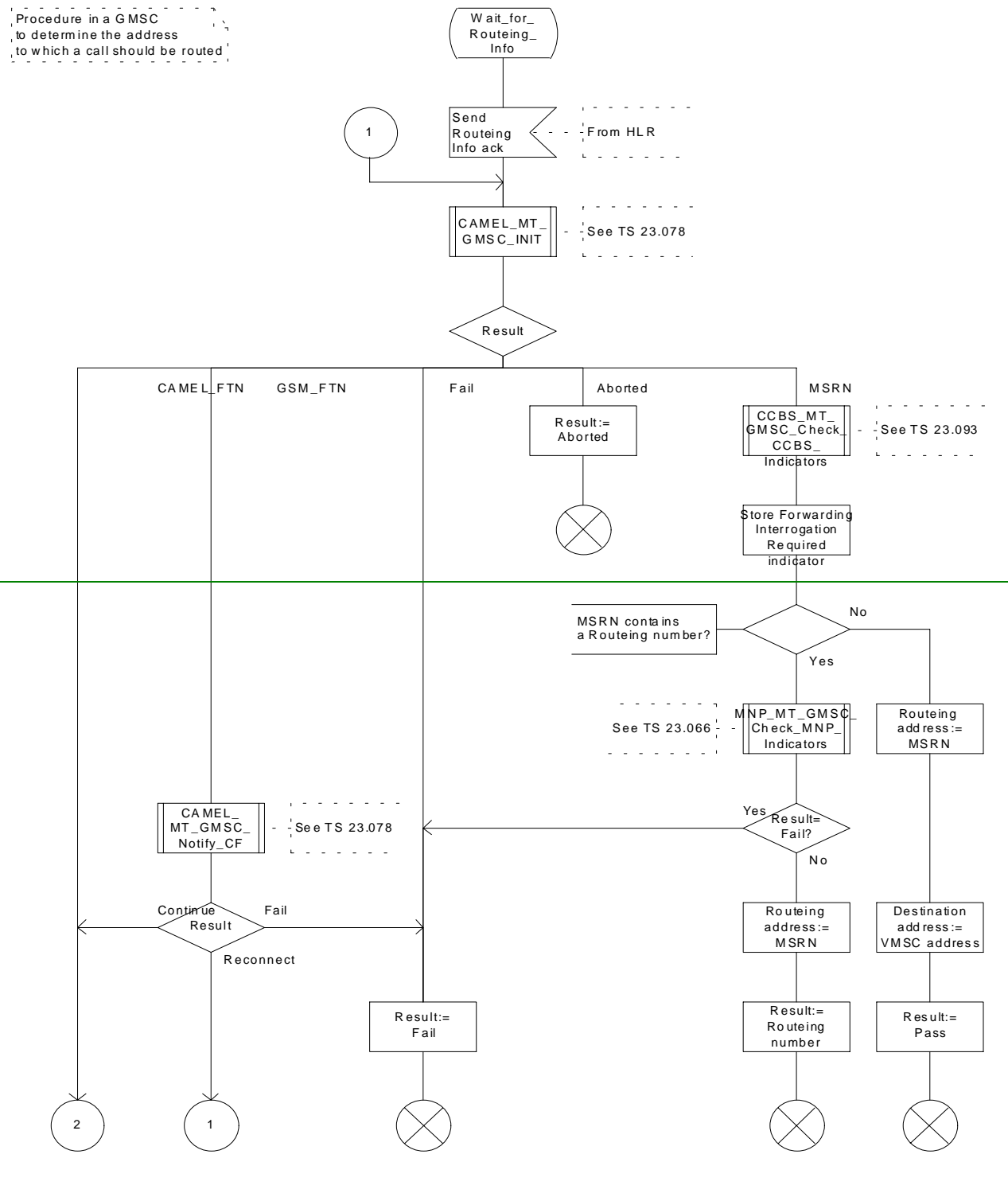


Figure 36b: Procedure Obtain\_Routeing\_Address (sheet 2)

Procedure Obtain\_Routing\_Address

ORA3(4)

Procedure in a GMSC to determine the address to which a call should be routed





### Procedure Obtain\_Routeing\_Address

ORA3(4)

Procedure in a GMSC to determine the address to which a call should be routed

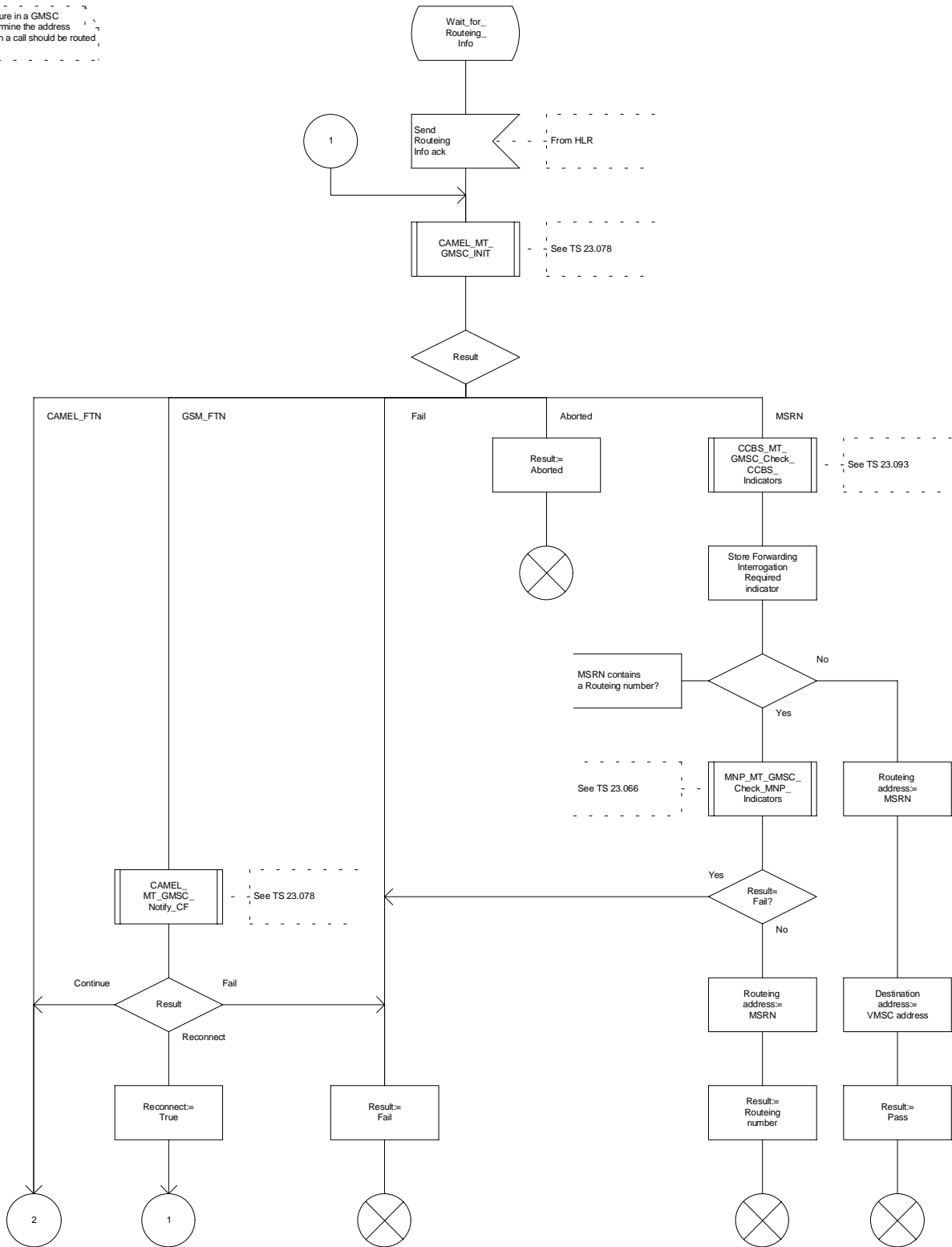


Figure 36c: Procedure Obtain\_Routeing\_Address (sheet 3)

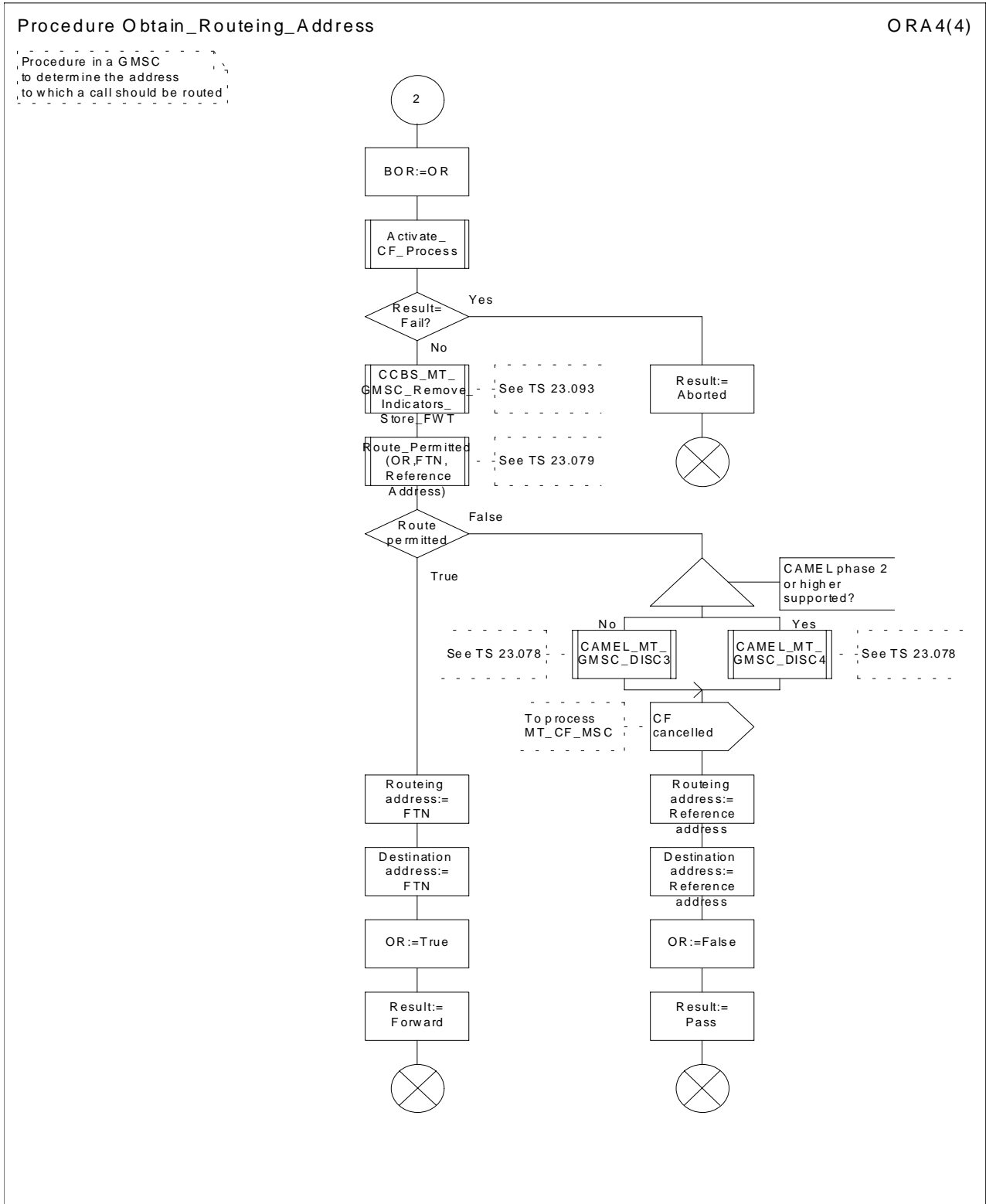


Figure 36d: Procedure Obtain\_Routeing\_Address (sheet 4)

\*\*\*\* End of Document \*\*\*\*

## CHANGE REQUEST

**23.072 CR 005**

Current Version: 3.2.0

For submission to: TSG-CN#09 for approval  for information  strategic  non-strategic

**Proposed change affects:** (U)SIM  ME  UTRAN / Radio  Core Network

**Source:** N4 **Date:** 21<sup>st</sup> August 2000

**Subject:** Handling of the Call Diversion Treatment Indicator

**Work item:** CAMEL Phase 3

<b>Category:</b>	F Correction	<input checked="" type="checkbox"/>	<b>Release:</b>	Phase 2	<input type="checkbox"/>
	A Corresponds to a correction in an earlier release	<input type="checkbox"/>		Release 96	<input type="checkbox"/>
	B Addition of feature	<input type="checkbox"/>		Release 97	<input type="checkbox"/>
	C Functional modification of feature	<input type="checkbox"/>		Release 98	<input type="checkbox"/>
	D Editorial modification	<input type="checkbox"/>		Release 99	<input checked="" type="checkbox"/>
				Release 00	<input type="checkbox"/>

**Reason for change:** TSG-N4 have agreed that the Call Diversion Treatment Indicator shall be checked in the VLR. This means that for CD Requests, the Call Diversion Treatment Indicator is checked in the Procedure CD\_Authorization.

**Clauses affected:** 7.1

**Other specs** Other 3G core specifications  → List of CRs: 23.018-057 (N4-000577), 23.072-004 (N4-000534), 23.078-187 (N2-000358), 23.078-205 (N2-000357), 23.093-004 (N4-000579)

**affected:** Other GSM core specifications  → List of CRs:  
MS test specifications  → List of CRs:  
BSS test specifications  → List of CRs:  
O&M specifications  → List of CRs:

**Other comments:**

**\*\*\*\* First Modified Section \*\*\*\***

## 7.1 Procedure CD\_Authorization

This procedure examines the authorization related to Call Deflection.

The procedure CAMEL\_Check\_CD\_Interaction is specific to CAMEL phase 2. If CAMEL phase 2 is not supported in the VLR, processing continues from the "No" exit of the test "Result=Pass?".

The procedure CAMEL\_CHECK\_SII2\_CDTI is specific to CAMEL Phase 3 or higher. If CAMEL Phase 3 or higher is not supported in the VLR, processing continues from the "Yes" exit of the test "Result = Pass?".

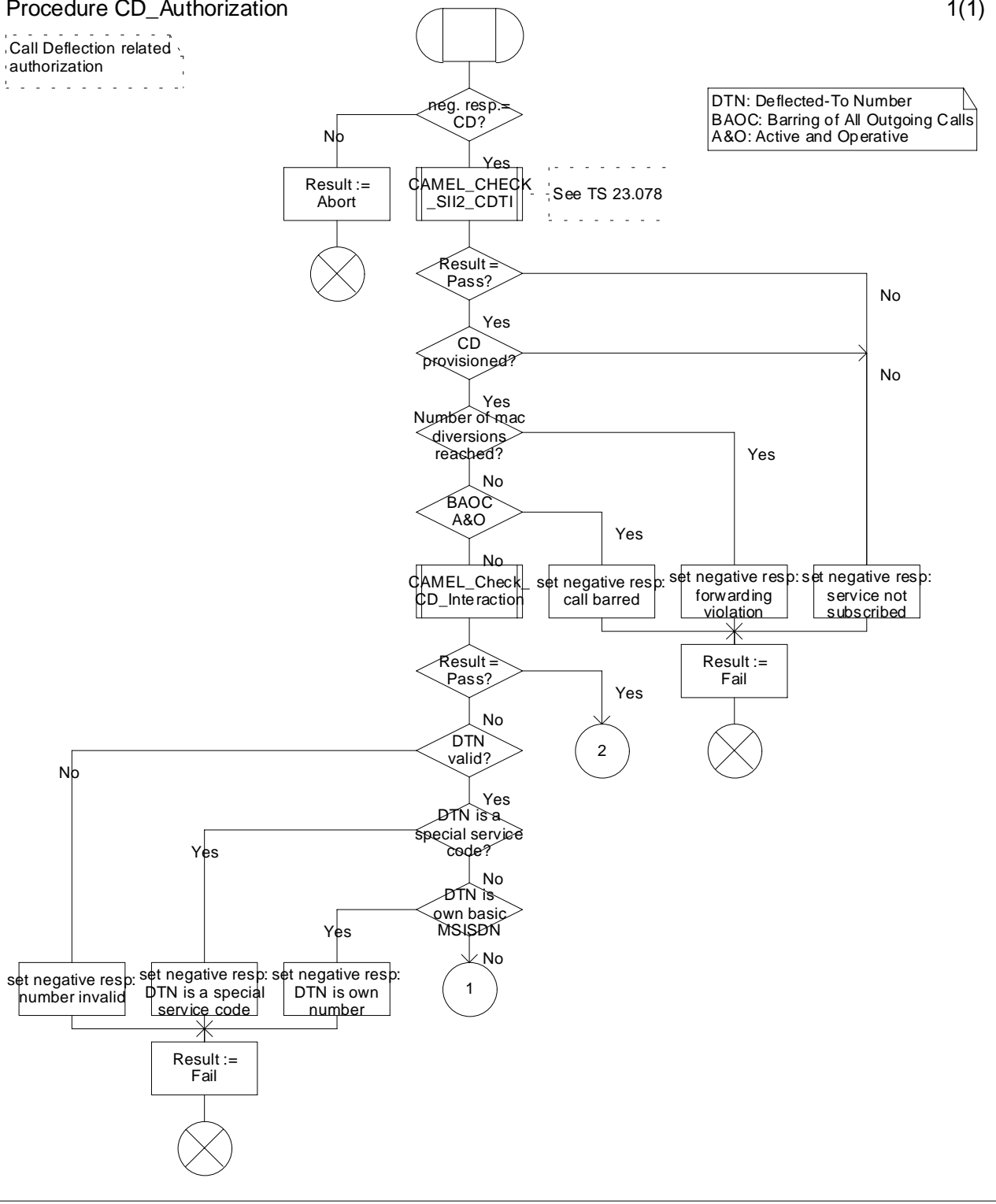
...

Procedure CD\_Authorization

1(1)

Call Deflection related authorization

DTN: Deflected-To Number  
 BAO: Barring of All Outgoing Calls  
 A&O: Active and Operative



Procedure CD\_Authorization

1(2)

Call Deflection related authorization

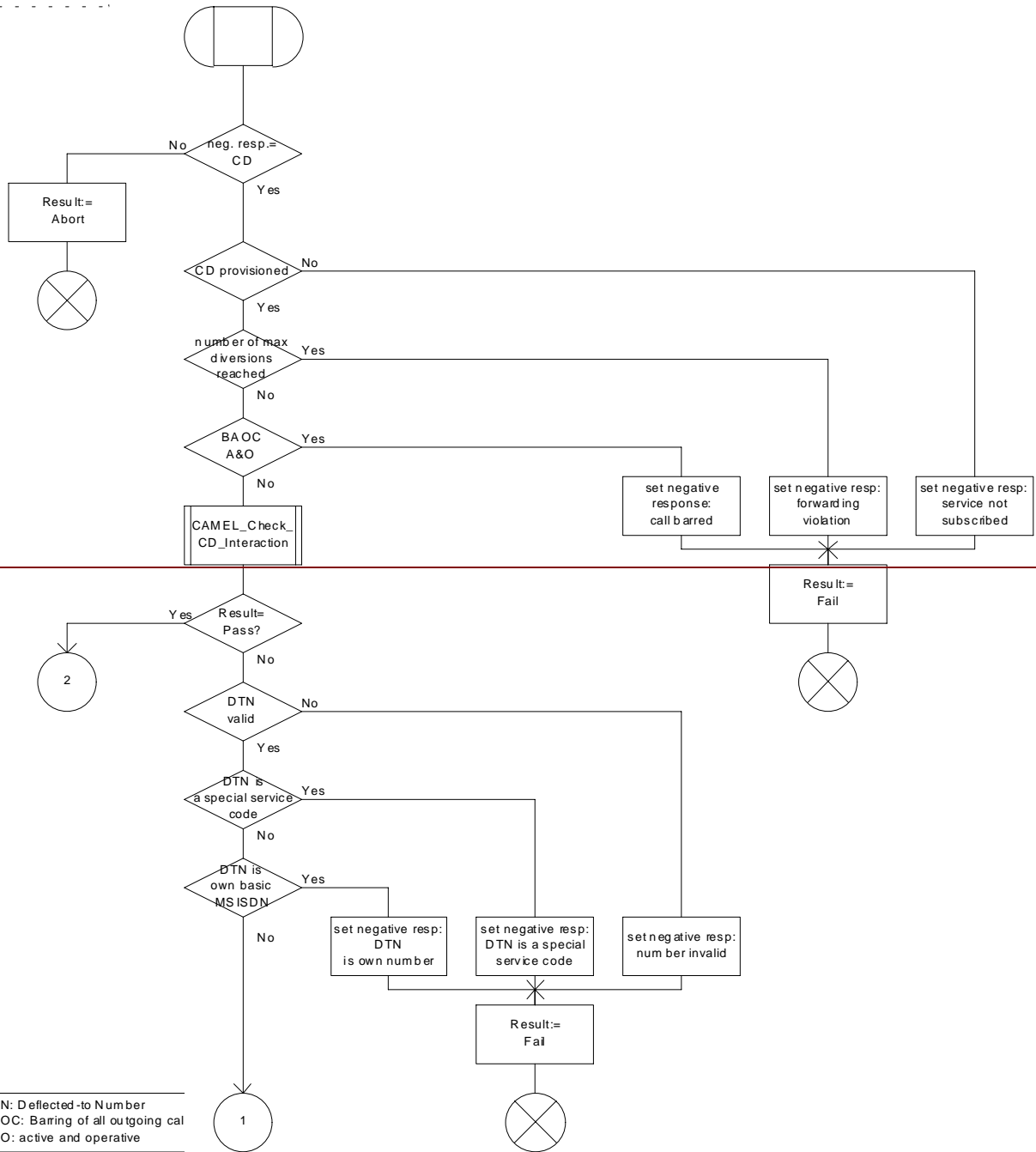


Figure 7.1 (sheet 1): Procedure CD\_Authorization

\*\*\* End of Document \*\*\*

## CHANGE REQUEST

**23.072 CR 004**

Current Version: 3.2.0

For submission to: TSG-CN#09

for approval   
for information

strategic   
non-strategic  (for SMG use only)

**Proposed change affects:** (U)SIM  ME  UTRAN / Radio  Core Network

**Source:** N4 **Date:** 10<sup>th</sup> July 2000

**Subject:** Transfer of Procedure Check\_CD\_SII2 to TS 23.078

**Work item:** CAMEL Phase 3

<b>Category:</b> <small>(only one category shall be marked with an X)</small>	F Correction	<input checked="" type="checkbox"/>	<b>Release:</b>	Phase 2	<input type="checkbox"/>
	A Corresponds to a correction in an earlier release	<input type="checkbox"/>		Release 96	<input type="checkbox"/>
	B Addition of feature	<input type="checkbox"/>		Release 97	<input type="checkbox"/>
	C Functional modification of feature	<input type="checkbox"/>		Release 98	<input type="checkbox"/>
	D Editorial modification	<input type="checkbox"/>		Release 99	<input checked="" type="checkbox"/>
			Release 00	<input type="checkbox"/>	

**Reason for change:** The procedure Check\_CD\_SII2 is used to check if the invocation of Call Deflection is prohibited by the Service Interaction Indicators Two parameter. However, this procedure should also be used to check if the invocation of Call Forwarding is prohibited, and hence should be moved to TS 23.078.

**Clauses affected:** 6.7 - deleted

<b>Other specs affected:</b>	Other 3G core specifications	<input checked="" type="checkbox"/>	→ List of CRs:	23.018-057 (Tdoc N2-000272) 23.078-187 (Tdoc N2-000276)
	Other GSM core specifications	<input type="checkbox"/>	→ List of CRs:	
	MS test specifications	<input type="checkbox"/>	→ List of CRs:	
	BSS test specifications	<input type="checkbox"/>	→ List of CRs:	
	O&M specifications	<input type="checkbox"/>	→ List of CRs:	

**Other comments:**

---

## 6 Functions of the serving MSC

The functions of the serving MSC are specified in TS 23.018. The procedures specific to the CD supplementary service are specified in this subclause.

...

### ~~6.7 Procedure Check\_CD\_SII2~~

~~This procedure is called after the CD request is received in the serving MSC.~~



Procedure Check\_CD\_SII2

1(1)

Procedure in the MSC to determine if the SII2 allows or disallows the CD invocation.

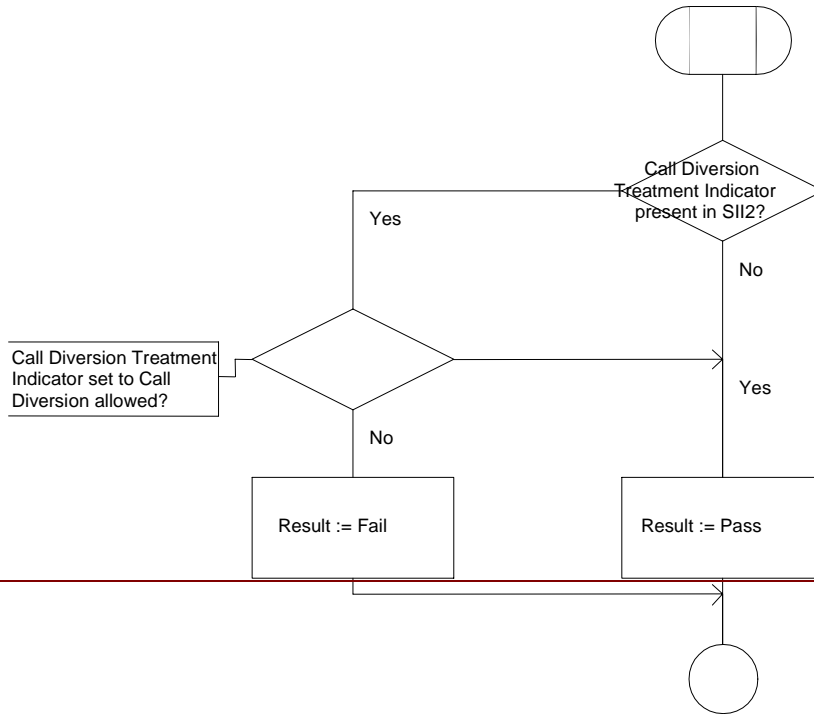


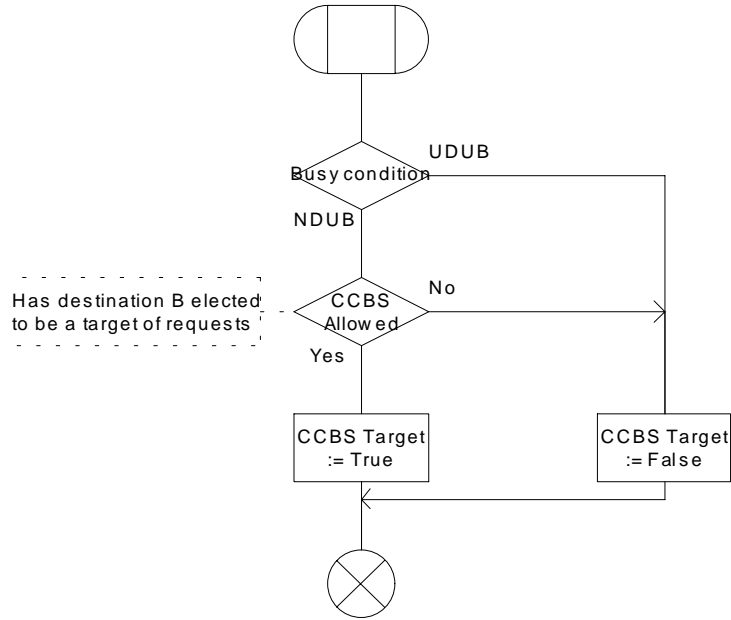
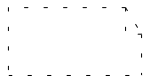
Figure 6.7: Procedure Check\_CD\_SII2



### 11.2.3 Procedures in MSC/VLR

Procedure CCBS\_ICH\_Set\_CCBS\_Target

1(1)



Procedure CCBS\_ICH\_Set\_CCBS\_Target

1(1)

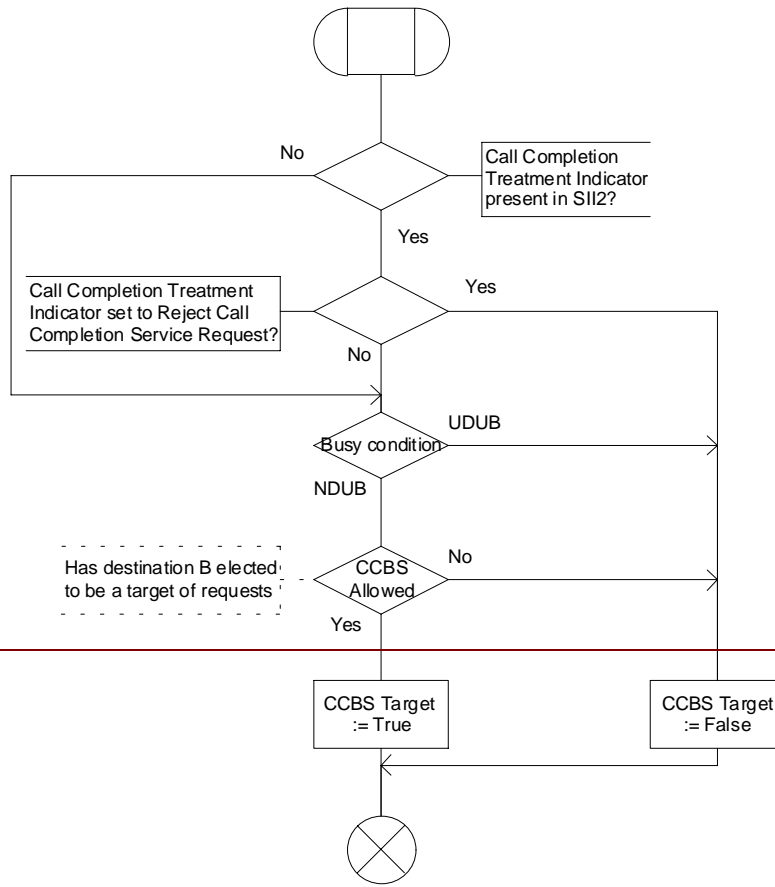
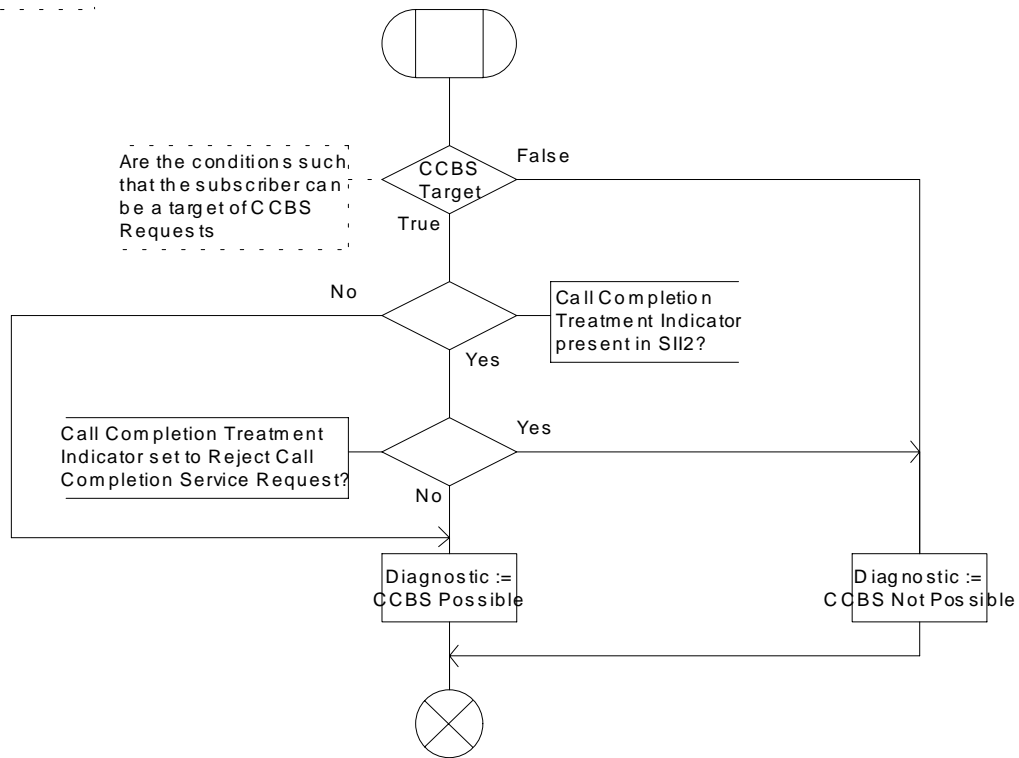


Figure 11.2.3.11: Procedure CCBS\_ICH\_Set\_CCBS\_Target

### 11.3 Processes and procedures common in originating and destination network entities

Procedure CCBS\_Set\_Diagnostic\_For\_Release

1(1)



Procedure CCBS\_Set\_Diagnostic\_For\_Release

1(1)

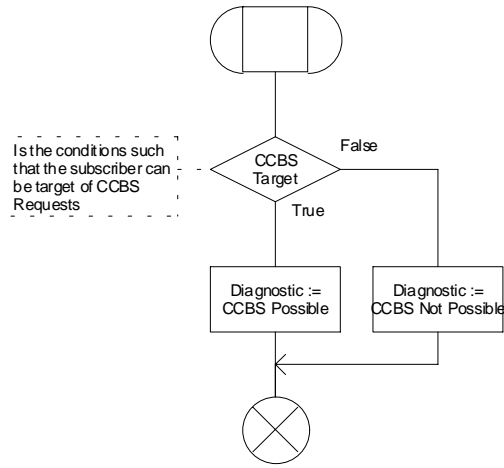
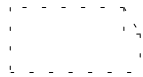


Figure 11.3.4: Procedure CCBS\_Set\_Diagnostic\_For\_Release

## CHANGE REQUEST

**23.093 CR 004**

Current Version: 3.1.0

For submission to: TSG-CN#09

for approval   
for information

strategic   
non-strategic

**Proposed change affects:** (U)SIM  ME  UTRAN / Radio  Core Network

**Source:** N4 **Date:** 21<sup>st</sup> August 2000

**Subject:** Handling of the Call Diversion Treatment Indicator

**Work item:** CAMEL Phase 3

<b>Category:</b>	F Correction	<input checked="" type="checkbox"/>	<b>Release:</b>	Phase 2	<input type="checkbox"/>
	A Corresponds to a correction in an earlier release	<input type="checkbox"/>		Release 96	<input type="checkbox"/>
	B Addition of feature	<input type="checkbox"/>		Release 97	<input type="checkbox"/>
	C Functional modification of feature	<input type="checkbox"/>		Release 98	<input type="checkbox"/>
	D Editorial modification	<input type="checkbox"/>		Release 99	<input checked="" type="checkbox"/>
				Release 00	<input type="checkbox"/>

**Reason for change:** The Call Diversion Treatment Indicator is used to prevent the invocation of Call Forwarding. The CCBS Supplementary Service can invoke early CFB in the HLR, so the Call Diversion Treatment Indicator needs to be checked in this scenario. The process HLRB\_BLOCKING has been re-modelled to reflect this.

**Clauses affected:** 11.2.2

**Other specs** Other 3G core specifications  → List of CRs: 23.018-057 (N4-000577), 23.072-004 (N4-000534), 23.072-005 (N4-000578), 23.078-187 (N2-000358), 23.078-205 (N2-000357)

**affected:** Other GSM core specifications  → List of CRs:  
MS test specifications  → List of CRs:  
BSS test specifications  → List of CRs:  
O&M specifications  → List of CRs:

**Other comments:**

**\*\*\* First Modified Section \*\*\***

## 11.2.2 Processes and procedures in HLR

...

Figure 11.2.2.6: Process HLRB\_Blocking

This process controls the CCBS Call delivery reporting when the processes are in the proper state. This means that the reporting functionality of the outcome of the CCBS Call is not blindly triggered whenever there is a terminating CCBS Call.

The process has three different states: "idle", "Blocking" and "Recall Blocking". The "Idle" state reflects the case when blocking is disabled. In the "Blocking" state all incoming calls are blocked (e.g. while T8 is running). The "Recall Blocking" state allows one CCBS Call to pass, which will trigger the CCBS Call delivery reporting in the MSC/VLR via the TS 23.018 process "SRI\_HLR". When this happens, the process will automatically change back to state "Blocking" as no other CCBS Call is expected for now.

When the process has detected that destination B is idle, it will start the blocking. Hence, the blocking process will change state to "Blocking". As soon as the process "HLRB\_Recall\_Manager" has initiated a CCBS Recall, it will cause a state change in the blocking process to state "Recall Blocking". When the CCBS Call is received, "result = OK" indication in signal "SRI\_Received\_Ack" will trigger the reporting mechanism for CCBS Call delivery via a PRN request in the TS 23.018 process "SRI\_HLR"

...



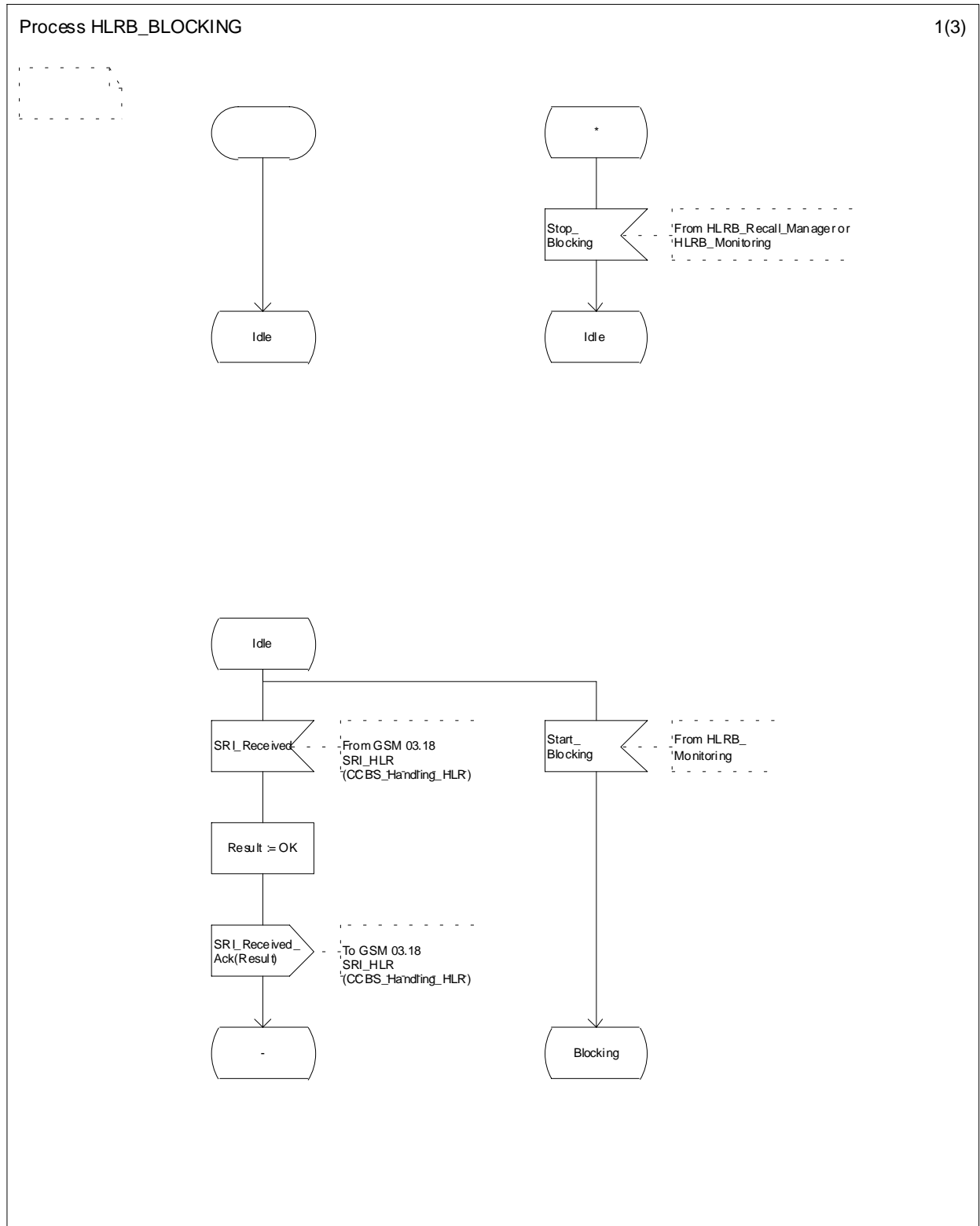
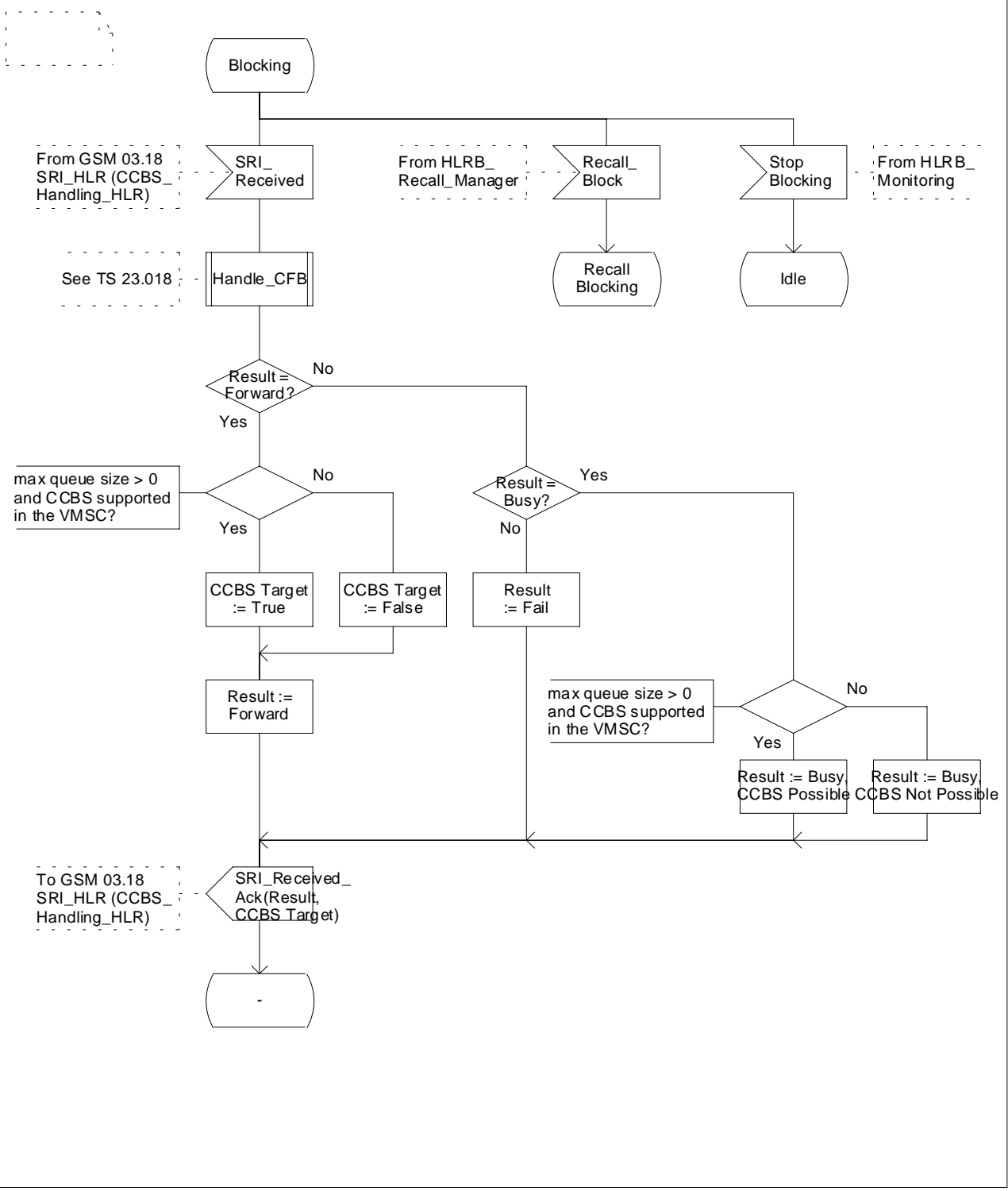


Figure 11.2.2.6: Process HLRB\_BLOCKING (sheet 1 of 3)

Process HLRB\_BLOCKING

2(3)



Process HLRB\_BLOCKING

2(3)

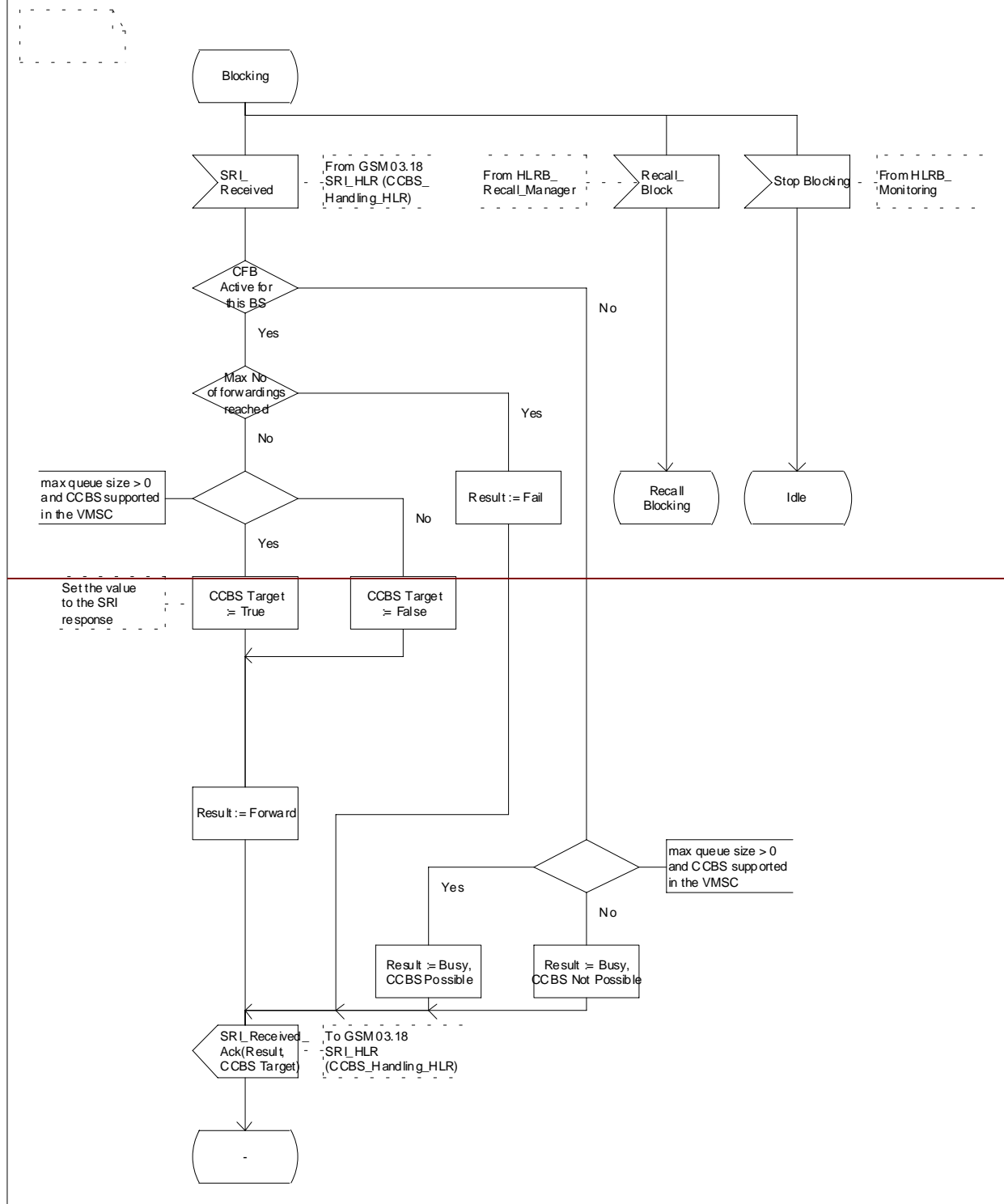
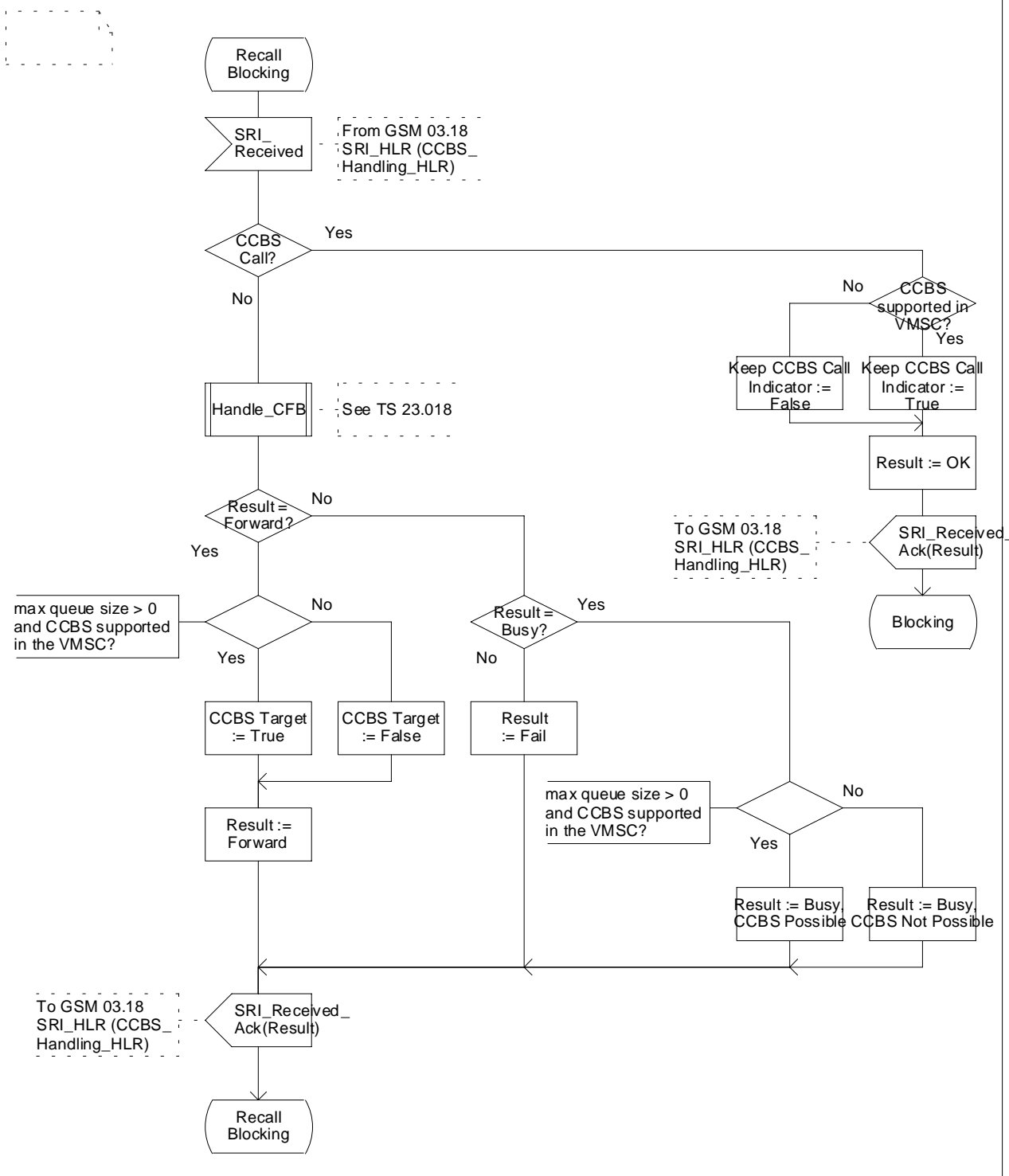


Figure 11.2.2.6: Process HLRB\_BLOCKING (sheet 2 of 3)

Process HLRB\_BLOCKING

3(3)



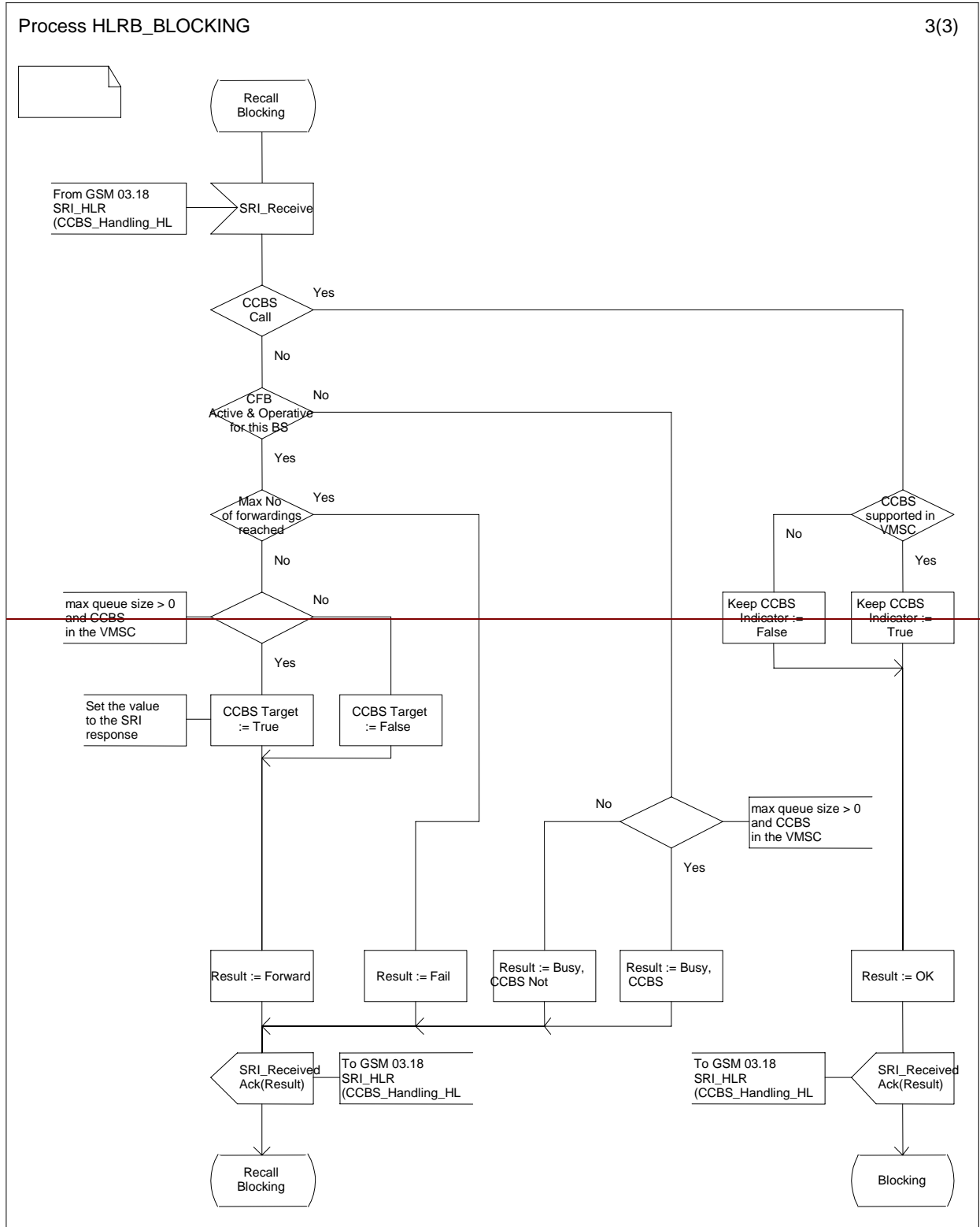


Figure 11.2.2.6: Process HLRB\_BLOCKING (sheet 3 of 3)

...

\*\*\* End of Document \*\*\*

3GPP TSG-N4 #4  
Seattle, USA, 28 Aug - 1 Sep 2000

**Tdoc 3GPP N4-000665**  
(Revision of N4-000575)

3GPP TSG-N2 #4  
Seattle, USA, 28 Aug - 1 Sep 2000

**Tdoc 3GPP N2-000392**  
(Revision of N2-000356)

## CHANGE REQUEST

**29.002 CR 162r1**

Current Version: 3.5.0

For submission to: TSG-N#09 for approval  for information  strategic  non-strategic

**Proposed change affects:** (U)SIM  ME  UTRAN / Radio  Core Network

**Source:** Vodafone **Date:** 25<sup>th</sup> August 2000

**Subject:** Correction on Location Information

**Work item:** CAMEL Phase 3

<b>Category:</b>	F Correction	<input checked="" type="checkbox"/>	<b>Release:</b>	Phase 2	<input type="checkbox"/>
	A Corresponds to a correction in an earlier release	<input type="checkbox"/>		Release 96	<input type="checkbox"/>
	B Addition of feature	<input type="checkbox"/>		Release 97	<input type="checkbox"/>
	C Functional modification of feature	<input type="checkbox"/>		Release 98	<input type="checkbox"/>
	D Editorial modification	<input type="checkbox"/>		Release 99	<input checked="" type="checkbox"/>
				Release 00	<input type="checkbox"/>

**Reason for change:** For Location Based CAMEL services, there was no way of knowing whether the MSC had provided the Cell Global ID or the Service Area Code. This causes a problem if, for example, a Cell Global ID of 1 indicates London, a Service Area Code of 1 indicates Edinburgh. A subscriber requesting location based information would be given inaccurate information. Hence, the gsmSCF needs to know which information it is receiving.

**Clauses affected:** 7.6.2.37, 8.3.1 and 17.7.1

<b>Other specs affected:</b>	Other 3G core specifications	<input checked="" type="checkbox"/>	→ List of CRs:	R00: 29.002-163 (N4-000666)
	Other GSM core specifications	<input type="checkbox"/>	→ List of CRs:	
	MS test specifications	<input type="checkbox"/>	→ List of CRs:	
	BSS test specifications	<input type="checkbox"/>	→ List of CRs:	
	O&M specifications	<input type="checkbox"/>	→ List of CRs:	

**Other comments:** The parameter defined in section 7.6.2.37 (Serving cell global Id or service area Id) is only used in section 8.3.1 (Process Access Request), so the name has been aligned.

**\*\*\*\* First Modified Section \*\*\*\***

7.6.2.37 Serving cell ~~global Id~~ ~~or service area Id~~

This parameter indicates the cell ~~or the service area~~ currently being used by the served subscriber.

**\*\*\*\* Next Modified Section \*\*\*\***

8.3.1 MAP\_PROCESS\_ACCESS\_REQUEST service

8.3.1.1 Definition

...

8.3.1.2 Service primitives

**Table 8.3/1: MAP\_PROCESS\_ACCESS\_REQUEST**

Parameter name	Request	Indication	Response	Confirm
Invoke Id	M	M(=)	M(=)	M(=)
CM service type	M	M(=)		
Access connection status	M	M(=)		
Current Location Area Id	M	M(=)		
Serving cell <u>l</u> id	M	M(=)		
TMSI	C	C(=)		
Cksn	C	C(=)		
IMSI	C	C(=)	C	C(=)
IMEI	C	C(=)	C	C(=)
MSISDN			U	C(=)
User error			C	C(=)
Provider error				O

8.3.1.3 Parameter definitions and use

...

Serving cell lid

See definition in subclause 7.6.2.

...

**\*\*\*\* Last Modified Section \*\*\*\***

17.7.1 Mobile Service data types

.  
.  
.

<b>LocationInformation ::= SEQUENCE {</b>		
ageOfLocationInformation	AgeOfLocationInformation	OPTIONAL,
geographicalInformation	[0] GeographicalInformation	OPTIONAL,
vlr-number	[1] ISDN-AddressString	OPTIONAL,
locationNumber	[2] LocationNumber	OPTIONAL,
cellGlobalIdOrServiceAreaIdOrLAI	[3] CellGlobalIdOrServiceAreaIdOrLAI	OPTIONAL,
extensionContainer	[4] ExtensionContainer	OPTIONAL,

```
... ,
selectedLSA-Id          [5] LSAIdentity          OPTIONAL,
msc-Number             [6] ISDN-AddressString   OPTIONAL,
geodeticInformation    [7] GeodeticInformation  OPTIONAL,
currentLocationRetrieved [8] NULL              OPTIONAL,
sai-Present            [9] NULL              OPTIONAL }
-- sai-Present indicates that the cellGlobalIdOrServiceAreaIdOrLAI parameter contains
-- a Service Area Identity.
-- currentLocationRetrieved shall be present
-- if the location information were retrieved after a successful paging.
```

```
.
.
.
```

**\*\*\*\* End of Document \*\*\*\***



## CHANGE REQUEST

**29.002 CR 165**

Current Version: 3.5.1

For submission to: CN#09

for approval   
for information

strategic   
non-strategic

Form: CR cover sheet, version 2 for 3GPP and SMG The latest version of this form is available from: ftp://ftp.3gpp.org/Information/CR-Form-v2.doc

**Proposed change affects:** (U)SIM  ME  UTRAN / Radio  Core Network   
(at least one should be marked with an X)

**Source:** N4

**Date:** 31<sup>st</sup> July 2000

**Subject:** Removal of LSAIdentity from NoteMM-EventArg

**Work item:** CAMEL phase 3

<b>Category:</b>	F Correction	<input checked="" type="checkbox"/>	<b>Release:</b>	Phase 2	<input type="checkbox"/>
	A Corresponds to a correction in an earlier release	<input type="checkbox"/>		Release 96	<input type="checkbox"/>
	B Addition of feature	<input type="checkbox"/>		Release 97	<input type="checkbox"/>
	C Functional modification of feature	<input type="checkbox"/>		Release 98	<input type="checkbox"/>
	D Editorial modification	<input type="checkbox"/>		Release 99	<input checked="" type="checkbox"/>
				Release 00	<input type="checkbox"/>

**Reason for change:** LSAIdentity is already included in LocationInformation.

**Clauses affected:** 17.7.1

<b>Other specs affected:</b>	Other 3G core specifications	<input type="checkbox"/>	→ List of CRs:	R00
	Other GSM core specifications	<input type="checkbox"/>	→ List of CRs:	
	MS test specifications	<input type="checkbox"/>	→ List of CRs:	
	BSS test specifications	<input type="checkbox"/>	→ List of CRs:	
	O&M specifications	<input type="checkbox"/>	→ List of CRs:	

**Other comments:**

## 17.7.1 Mobile Service data types

.....

```
LocationInformation ::= SEQUENCE {
  ageOfLocationInformation      AgeOfLocationInformation      OPTIONAL,
  geographicalInformation       [0] GeographicalInformation   OPTIONAL,
  vlr-number                    [1] ISDN-AddressString             OPTIONAL,
  locationNumber                [2] LocationNumber                 OPTIONAL,
  cellGlobalIdOrServiceAreaIdOrLAI [3] CellGlobalIdOrServiceAreaIdOrLAI
  OPTIONAL,
  extensionContainer            [4] ExtensionContainer              OPTIONAL,
  ... ,
  selectedLSA-Id                [5] LSAIdentity                  OPTIONAL,
  msc-Number                    [6] ISDN-AddressString             OPTIONAL,
  geodeticInformation           [7] GeodeticInformation           OPTIONAL,
  currentLocationRetrieved      [8] NULL                      OPTIONAL }
-- currentLocationRetrieved shall be present
-- if the location information were retrieved after a successful paging.
```

.....

-- mobility management event notification info types

```
NoteMM-EventArg ::= SEQUENCE {
  serviceKey                    ServiceKey,
  eventMet                      [0] MM-Code,
  imsi                          [1] IMSI,
  msisdn                        [2] ISDN-AddressString,
  locationInformation            [3] LocationInformation          OPTIONAL,
  lsaIdentity                    [4] LSAIdentity                  OPTIONAL,
  supportedCAMELPhases          [5] SupportedCamelPhases          OPTIONAL,
  extensionContainer            [6] ExtensionContainer              OPTIONAL,
  ... }
```

.....



## 17.7 MAP constants and data types

### 17.7.1 Mobile Service data types

\*\*\*\* NEXT MODIFIED SECTION \*\*\*\*

```
GPRS-CSI ::= SEQUENCE {
    gprs-CamelTDPDataList          [0] GPRS-CamelTDPDataList          OPTIONAL,
    camelCapabilityHandling        [1] CamelCapabilityHandling        OPTIONAL,
    extensionContainer             [2] ExtensionContainer             OPTIONAL,
    notificationToCSE              [3] NULL                          OPTIONAL,
    csiActive                      [4] NULL                          OPTIONAL,
    ...}
-- notificationToCSE and csi-Active shall not be present when GPRS-CSI is sent to SGSN.
-- They may only be included in ATSI/ATM ack/NSDC message.
-- GPRS-CamelTDPData and camelCapabilityHandling shall be present in
-- the GPRS-CSI sequence.
-- If GPRS-CSI is segmented, gprs-CamelTDPDataList and camelCapabilityHandling shall be
-- present in the first segment
```

<h2 style="margin: 0;">CHANGE REQUEST</h2>		<small>Please see embedded help file at the bottom of this page for instructions on how to fill in this form correctly.</small>
<b>29.002</b>	<b>CR</b>	<b>187</b>
<small>GSM (AA.BB) or 3G (AA.BBB) specification number ↑</small>		<small>Current Version: 3.5.1</small>
<small>↑ CR number as allocated by MCC support team</small>		
For submission to: <b>CN#09</b>	for approval <input checked="" type="checkbox"/>	strategic <input type="checkbox"/> (for SMG use only)
<small>list expected approval meeting # here ↑</small>	for information <input type="checkbox"/>	non-strategic <input checked="" type="checkbox"/>

Form: CR cover sheet, version 2 for 3GPP and SMG The latest version of this form is available from: ftp://ftp.3gpp.org/Information/CR-Form-v2.doc

**Proposed change affects:** (U)SIM  ME  UTRAN / Radio  Core Network   
(at least one should be marked with an X)

**Source:** N4 **Date:** 31.8.2000

**Subject:** Clarification for segmentation of D-CSI and SMS-CSI

**Work item:** CAMEL Phase 3

<b>Category:</b>	F Correction <input checked="" type="checkbox"/>	<b>Release:</b>	Phase 2 <input type="checkbox"/>
<small>(only one category shall be marked with an X)</small>	A Corresponds to a correction in an earlier release <input type="checkbox"/>		Release 96 <input type="checkbox"/>
	B Addition of feature <input type="checkbox"/>		Release 97 <input type="checkbox"/>
	C Functional modification of feature <input type="checkbox"/>		Release 98 <input type="checkbox"/>
	D Editorial modification <input type="checkbox"/>		Release 99 <input checked="" type="checkbox"/>
			Release 00 <input type="checkbox"/>

Clarification for segmentation of D-CSI and SMS-CSI is needed. Some of those CSI's parameters are mandatory for CAMEL and they must be included in first ISD so that the data missing error is avoided

**Clauses affected:** 17.7

<b>Other specs affected:</b>	Other 3G core specifications <input type="checkbox"/>	→ List of CRs:	
	Other GSM core specifications <input type="checkbox"/>	→ List of CRs:	
	MS test specifications <input type="checkbox"/>	→ List of CRs:	
	BSS test specifications <input type="checkbox"/>	→ List of CRs:	
	O&M specifications <input type="checkbox"/>	→ List of CRs:	

**Other comments:**

<----- double-click here for help and instructions on how to create a CR.

## 17.7 MAP constants and data types

### 17.7.1 Mobile Service data types

\*\*\*\* NEXT MODIFIED SECTION \*\*\*\*

```
D-CSI ::= SEQUENCE {
    dp-AnalysedInfoCriteriaList      [0] DP-AnalysedInfoCriteriaList  OPTIONAL,
    camelCapabilityHandling           [1] CamelCapabilityHandling      OPTIONAL,
    extensionContainer                [2] ExtensionContainer           OPTIONAL,
    ...}
-- DP-AnalysedInfoCriteria and camelCapabilityHandling shall be present in
-- the D-CSI sequence.
-- If D-CSI is segmented, dp-AnalysedInfoCriteriaList and camelCapabilityHandling shall be
-- present in the first segment
```

```
DP-AnalysedInfoCriteriaList ::= SEQUENCE SIZE (1..maxNumOfDP-AnalysedInfoCriteria) OF
    DP-AnalysedInfoCriterion
```

```
maxNumOfDP-AnalysedInfoCriteria INTEGER ::= 10
```

\*\*\*\* NEXT MODIFIED SECTION \*\*\*\*

```
SMS-CSI ::= SEQUENCE {
    sms-CAMEL-TDP-DataList           [0] SMS-CAMEL-TDP-DataList      OPTIONAL,
    camelCapabilityHandling           [1] CamelCapabilityHandling      OPTIONAL,
    extensionContainer                [2] ExtensionContainer           OPTIONAL,
    notificationToCSE                [3] NULL                        OPTIONAL,
    csiActive                         [4] NULL                        OPTIONAL,
    ...}
-- notificationToCSE and csiActive shall not be present when SMS-CSI is sent to VLR/SGSN.
-- They may only be included in ATSI/ATM Ack message.
-- SMS-CAMEL-TDP-Data and camelCapabilityHandling shall be present in
-- the SMS-CSI sequence.
-- If SMS-CSI is segmented, sms-CAMEL-TDP-DataList and camelCapabilityHandling shall be
-- present in the first segment
```