

**PCG#14(05)06**  
**Agenda item: 4.2**



# **CN Management Report**

**Stephen Hayes**  
**ex-Chair of ex-TSG-CN**  
**stephen.hayes@ericsson.com**  
**+1 469 360 8500**

A GLOBAL INITIATIVE



PCG#14(05)06

Agenda item: 4.2

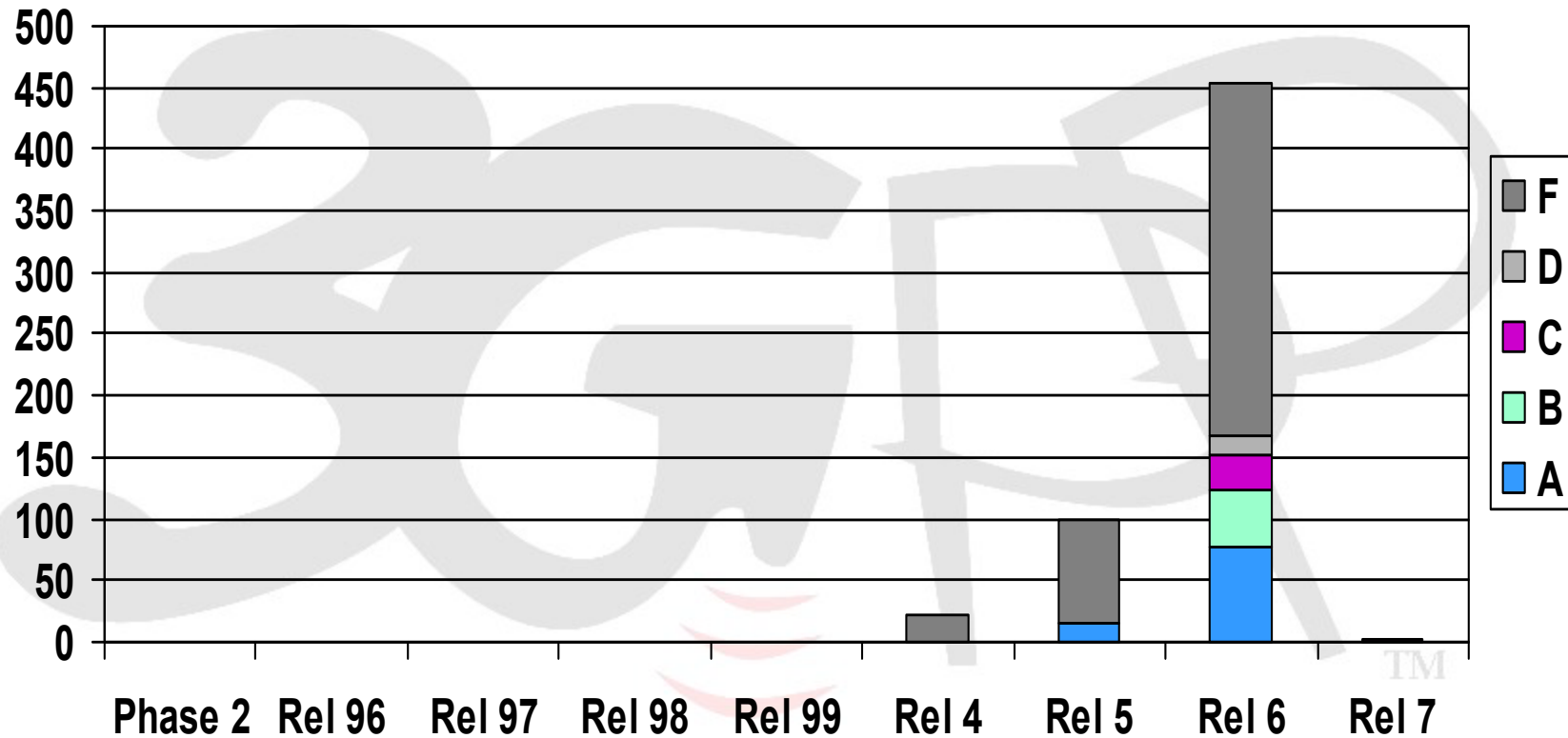


## Topics for PCG Presentation

- **CR Statistics**
- **Pre-Release 6 Status**
- **Release 6 Status**
- **Release 7 Status**
- **External Relations (3GPP2, IETF, LAP, TISPAN)**
- **CN Organization**

A GLOBAL INITIATIVE

## CN#26+27 CR Statistics



Total CN CRs approved: CN22+23 = 490, CN24+25 = 596, CN26+27 = 578

A GLOBAL INITIATIVE

PCG#14(05)06

Agenda item: 4.2



## Pre-Release 6 Status

- **No CRs on R98 or Earlier**
- **Release 99**
  - Only 1 CR
- **Release 5**
  - IMS Cleanup
  - CAMEL Fixes
  - OoBTC/TrFO/SCUDIF Fixes

A GLOBAL INITIATIVE

PCG#14(05)06

Agenda item: 4.2



## Release 6 Status Overview

| Work Item (CN portion)  | WG  | Target Date |
|---|-----|-------------|
| Interop & Commonality between IMSs using different IP-connectivity networks – Stage 3 | CN1 | COMPLETED   |
| MBMS (except for ROHC support)  | CN1 | COMPLETED   |
| Presence (WLAN I/fs being added)*   | CN1 | COMPLETED   |
| IMS Phase 2 – Stage 3 (except SIP/ALG)*   | CN1 | COMPLETED   |
| Network Sharing   | CN1 | COMPLETED   |
| Gq Dynamic Policy Control   | CN3 | COMPLETED   |
| Flow Based Charging   | CN3 | COMPLETED   |
| Interworking IMS<->CS   | CN3 | COMPLETED   |
| Interworking IMS<->IP   | CN3 | COMPLETED   |

\*Outstanding IETF dependencies

PCG#14(05)06

Agenda item: 4.2



## Release 6 Status (cont.)

| Work Item (CN portion)                            | WG         | Target Date    |
|---|------------|----------------|
| Enhanced Dialed Services                          | CN4        | COMPLETED      |
| CAMEL 4 Prepay Support for SCUDIF                 | CN4        | COMPLETED      |
| Enhancements to Cx/Sh                             | CN4        | COMPLETED      |
| MGCF-IM MGW I/f (Mn) (profile work remains)       | CN4        | COMPLETED      |
| WLAN Interworking - Stage 3 (except IMS support)* | CN4        | COMPLETED      |
| <b>Generic User Profile</b>                       | <b>CN4</b> | <b>June 05</b> |
| Support of Subscriber Certificates                | CN4        | COMPLETED      |
| Trace Management (IMS trace removed)              | CN4        | COMPLETED      |
| OSA Rel 6   | CN5        | COMPLETED      |

\*Outstanding IETF dependencies

PCG#14(05)06

Agenda item: 4.2



## Rel-6 Exceptions granted at TSG#27

| Document  | Exception   |
|-----------|---|
| NP-050042 | GUP for Rel-6 (Access control and GUP XML schema)   |
| NP-050046 | Mn-interface Profile for Rel 6  |
| NP-050087 | Rel-6 Exception Request Form for Circuit Switched Video and Voice Service Improvements (CS_VSS) (redial solution)   |
| NP-050089 | Extensions to SIP capabilities (interworking to SIP with ALG))  |
| NP-050104 | SCUDIF (Upgrade from speech to multimedia)  |
| NP-050124 | Robust header Compression (RoHC) support for MBMS   |
| NP-050138 | Handover for Conversational Services in A/Gb mode via the PS Domain   |
| NP-050143 | WLAN (Presence Information to the PNA via Pr, Pp and Wx (Px' HSS WLAN Data to PNA) AND Authorization information update procedure in Wa,Wm reference points |
| NP-050144 | Release 6 Exception Notice for WLAN ACCESS to IMS.  |

PCG#14(05)06

Agenda item: 4.2



## **CN Approved Rel 7 Work Items**

| <b>Title</b>   | <b>WG</b>  | <b>NP doc</b>    |
|--|------------|------------------|
| <b>Enhancements of VGCS in public networks for communication of public authority officials</b> | <b>CN1</b> | <b>NP-040435</b> |
| <b>Emergency Call Enhancements for IP&amp; PS Based Calls – stage 3</b>                        | <b>CN1</b> | <b>NP-040608</b> |
| <b>IP Multimedia Core Network Subsystem - IMS Stage3 Protocol Evolution</b>                    | <b>CN1</b> | <b>NP-040617</b> |
| <b>Protocol impact from providing IMS services via fixed broadband</b>                         | <b>CN1</b> | <b>NP-040618</b> |
| <b>Trace Management, stage3, IMS</b>   | <b>CN1</b> | <b>NP-050061</b> |
| <b>WID for Combining CS and IMS services &amp; CapabilityDetection mechanism</b>               | <b>CN1</b> | <b>NP-050063</b> |
| <b>Improvements of VGCS in public networks for parallel use of services</b>                    | <b>CN1</b> | <b>NP-050141</b> |
| <b>DIAMETER on the PDG Wi interface</b>  | <b>CN3</b> | <b>NP-040340</b> |
| <b>DIAMETER on the GGSN Gi interface</b>   | <b>CN3</b> | <b>NP-040434</b> |
| <b>CAMEL Trunk Originated Trigger Detection Points</b>   | <b>CN4</b> | <b>NP-040550</b> |



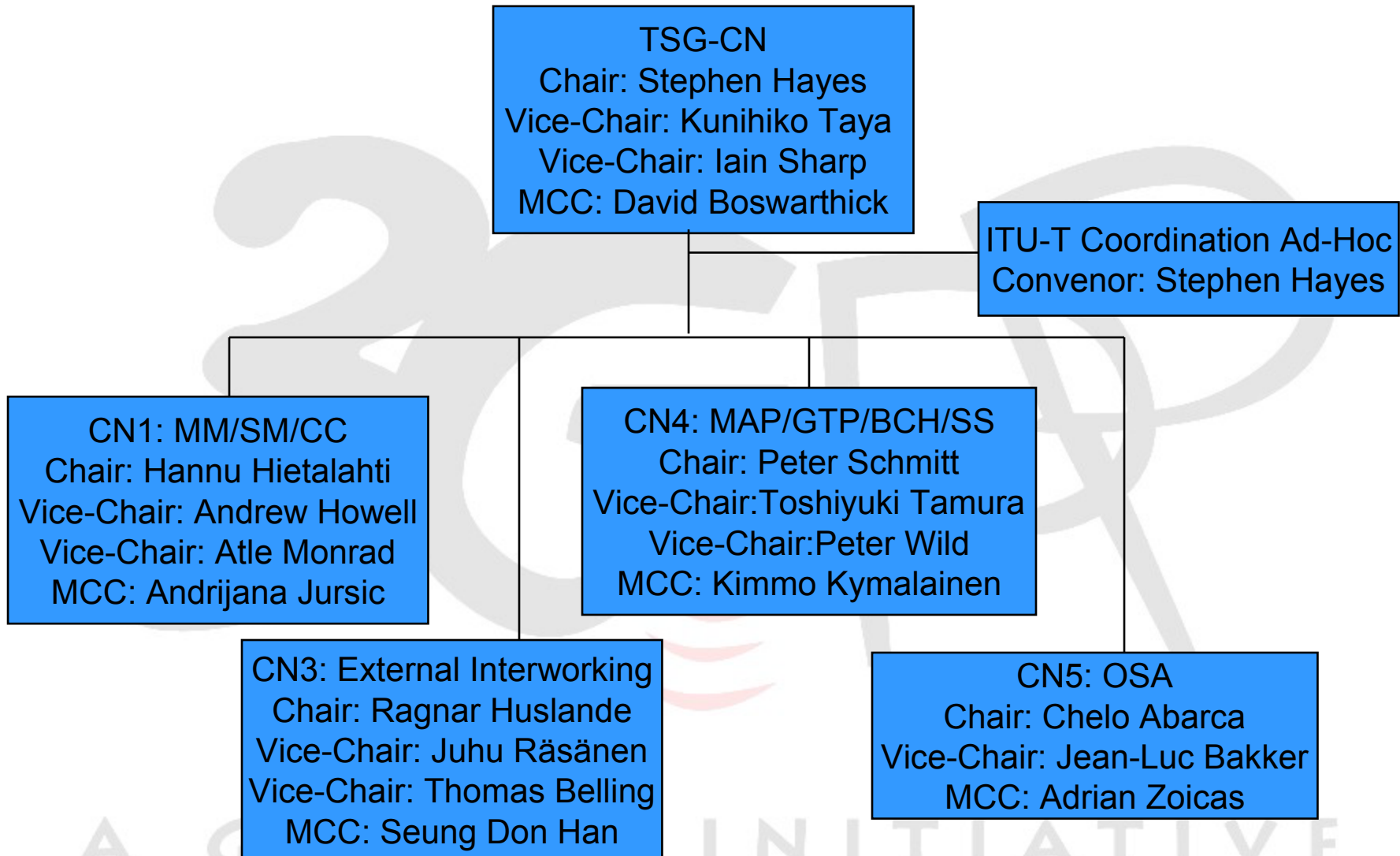
PCG#14(05)06

Agenda item: 4.2



## External Relationships

- **3GPP2**
  - No activity
- **IETF**
  - Currently tracking 80 IETF Rel 6 dependencies
  - Critical missing dependencies in Presence, IM
  - Conferencing functionality removed due to delayed dependencies
- **Liberty Alliance Project (LAP)**
  - Outstanding request from CN4 for presence related specs
- **TISPAN**
  - WID agreed for fixed broadband access impacts to IMS
  - TR 24.819 started as holding pen for TISPAN CRs
  - Agreement at 2<sup>nd</sup> workshop that TISPAN will not duplicate IMS specs



PCG#14(05)06

Agenda item: 4.2



## CN's Last Meeting



**Special thanks to all the officers, MCC,  
and delegates who made CN possible**