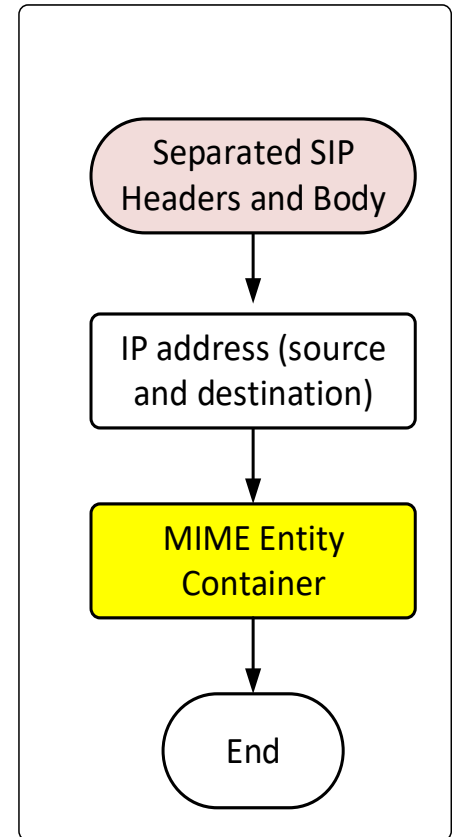
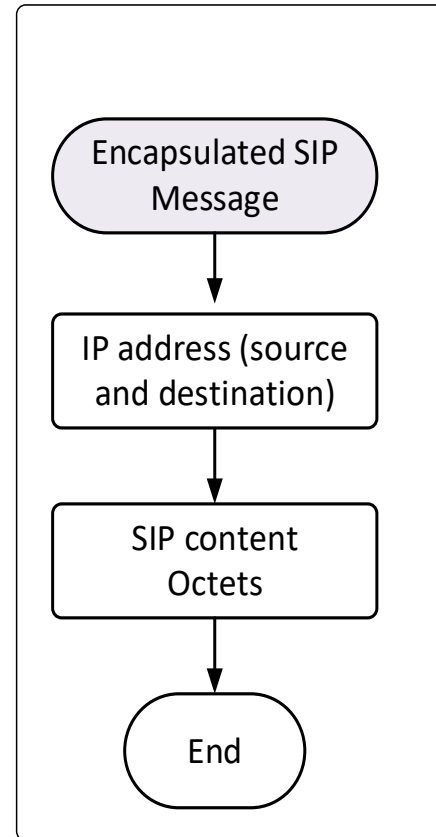
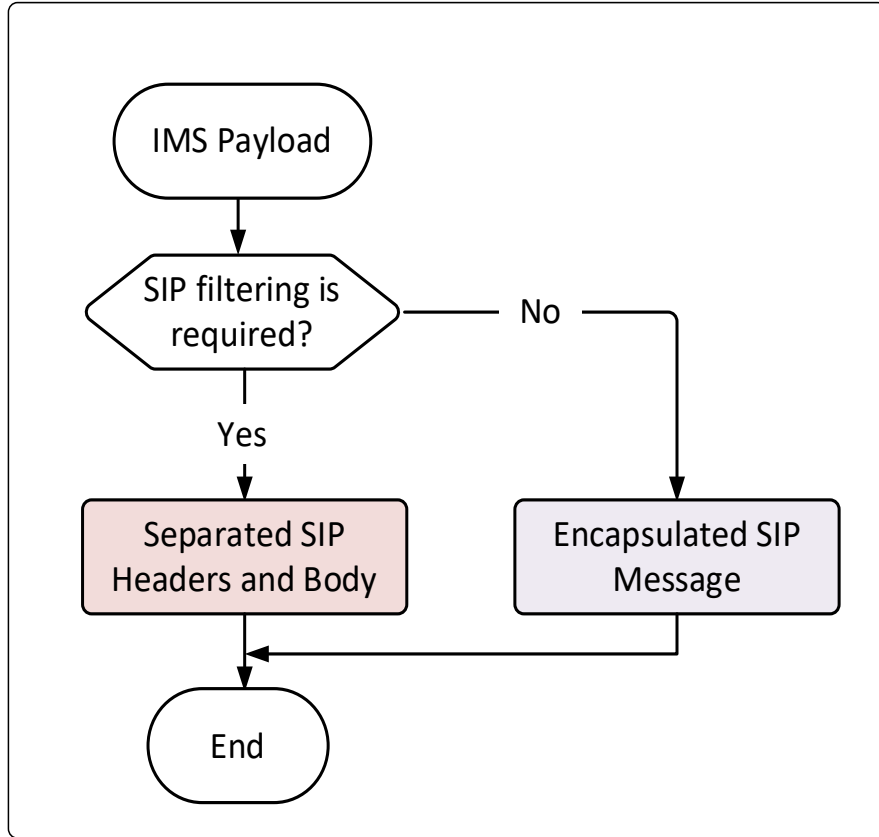


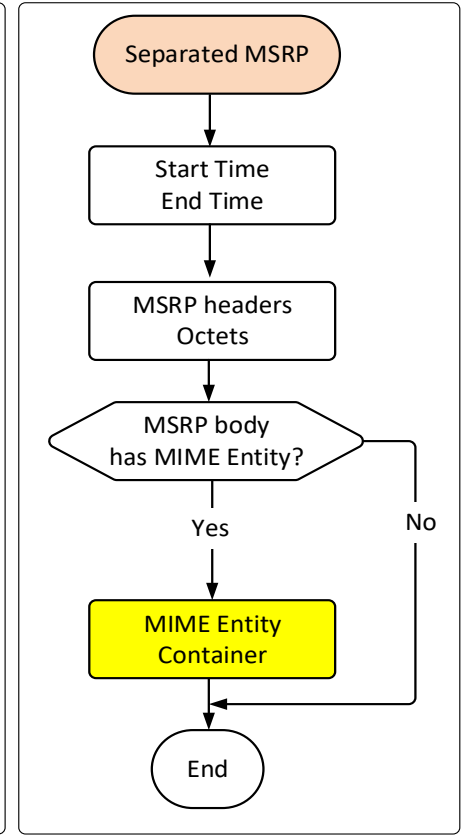
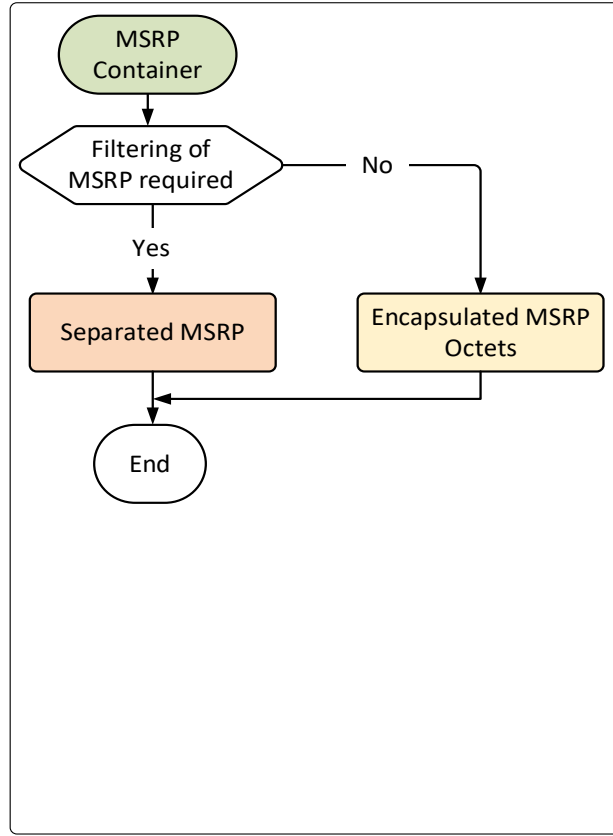
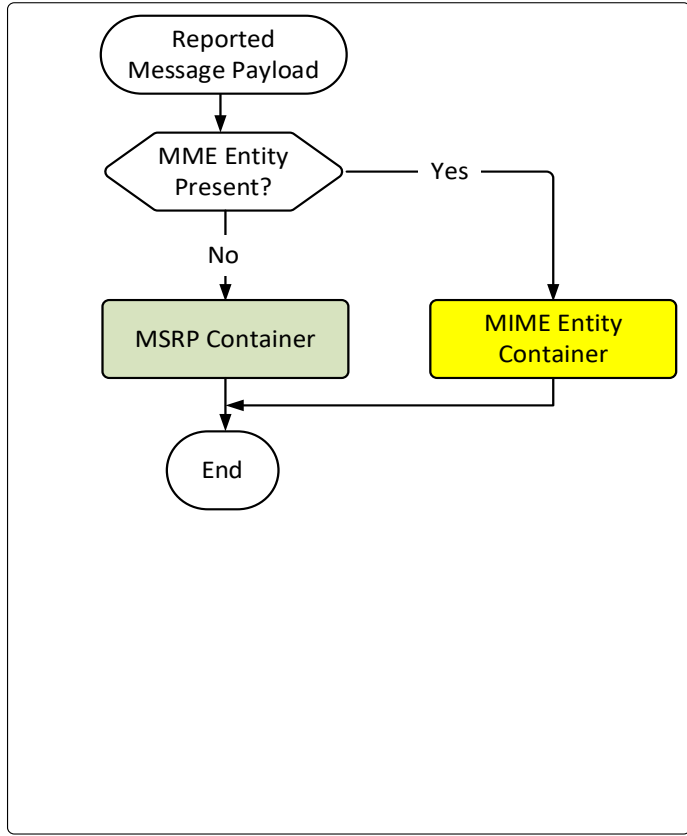
In support of

Solution to allow the reporting of encapsulated information

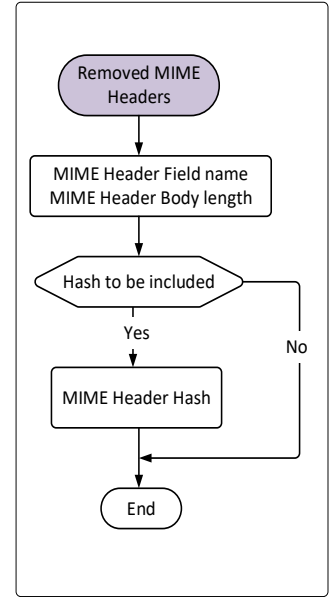
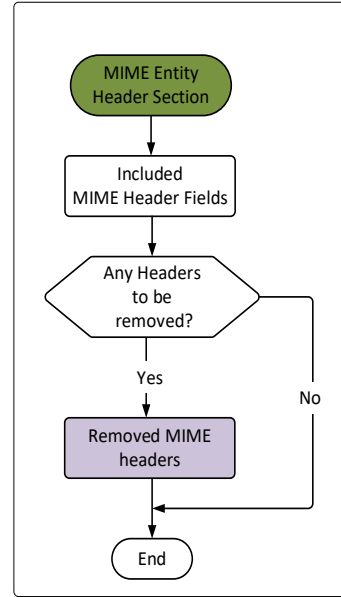
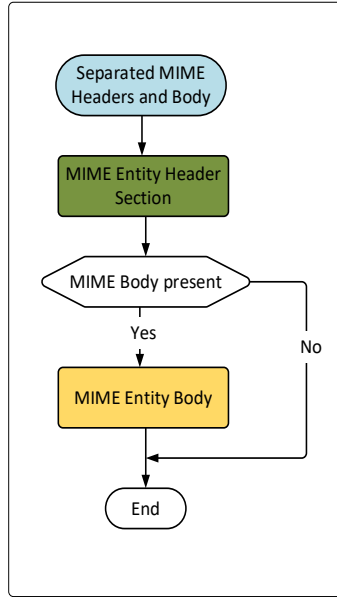
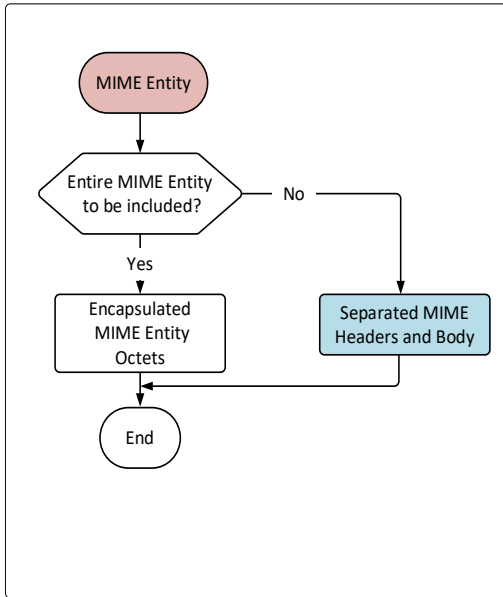
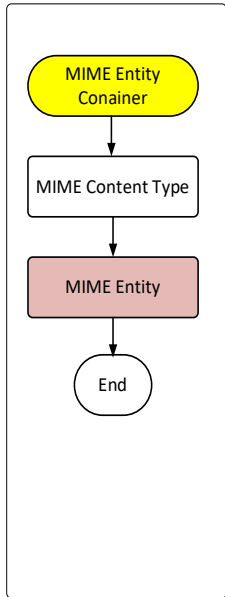
Nagaraja (Nag) Rao; Boca Raton, FL

Reflecting the CR concepts

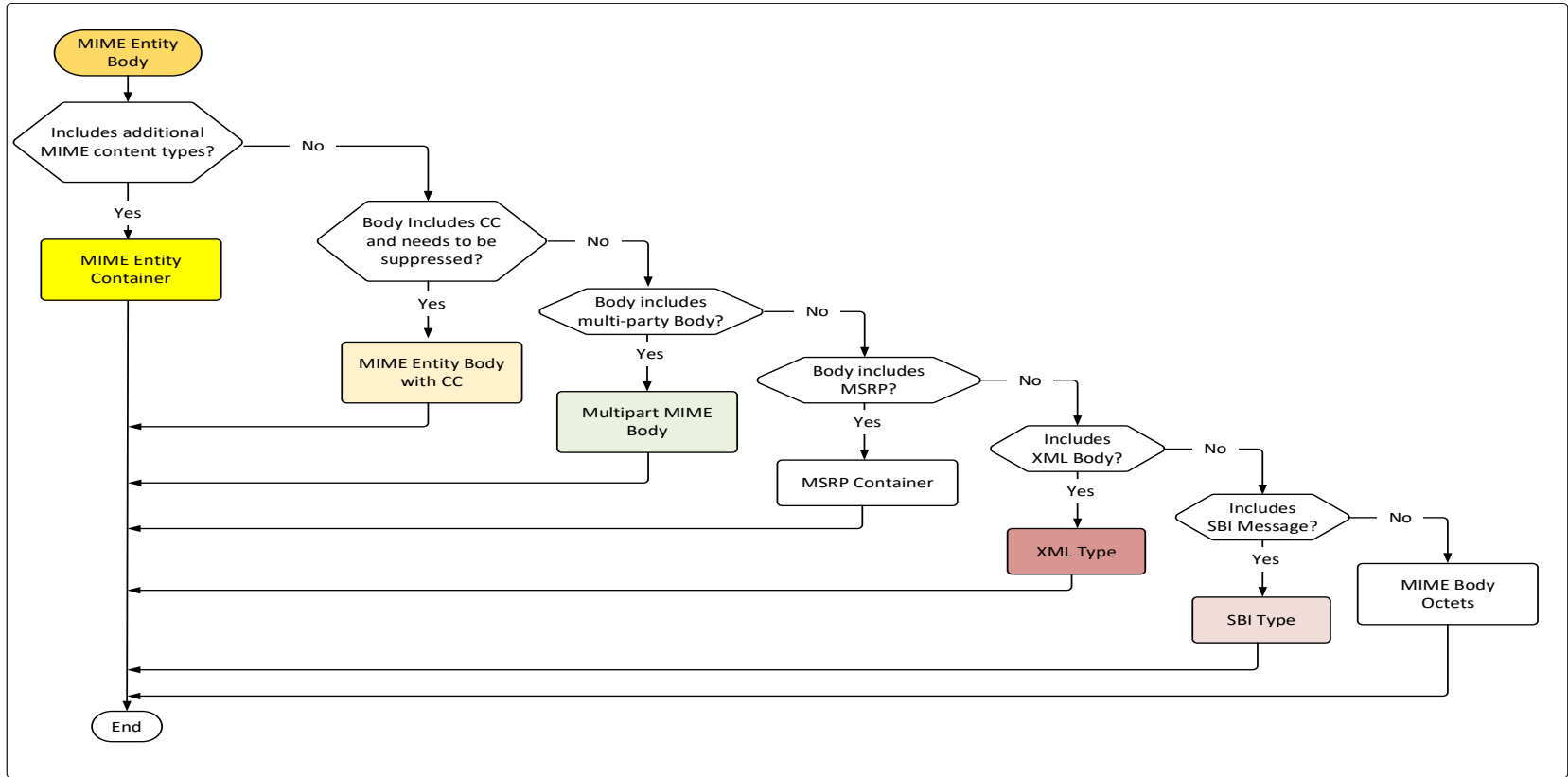




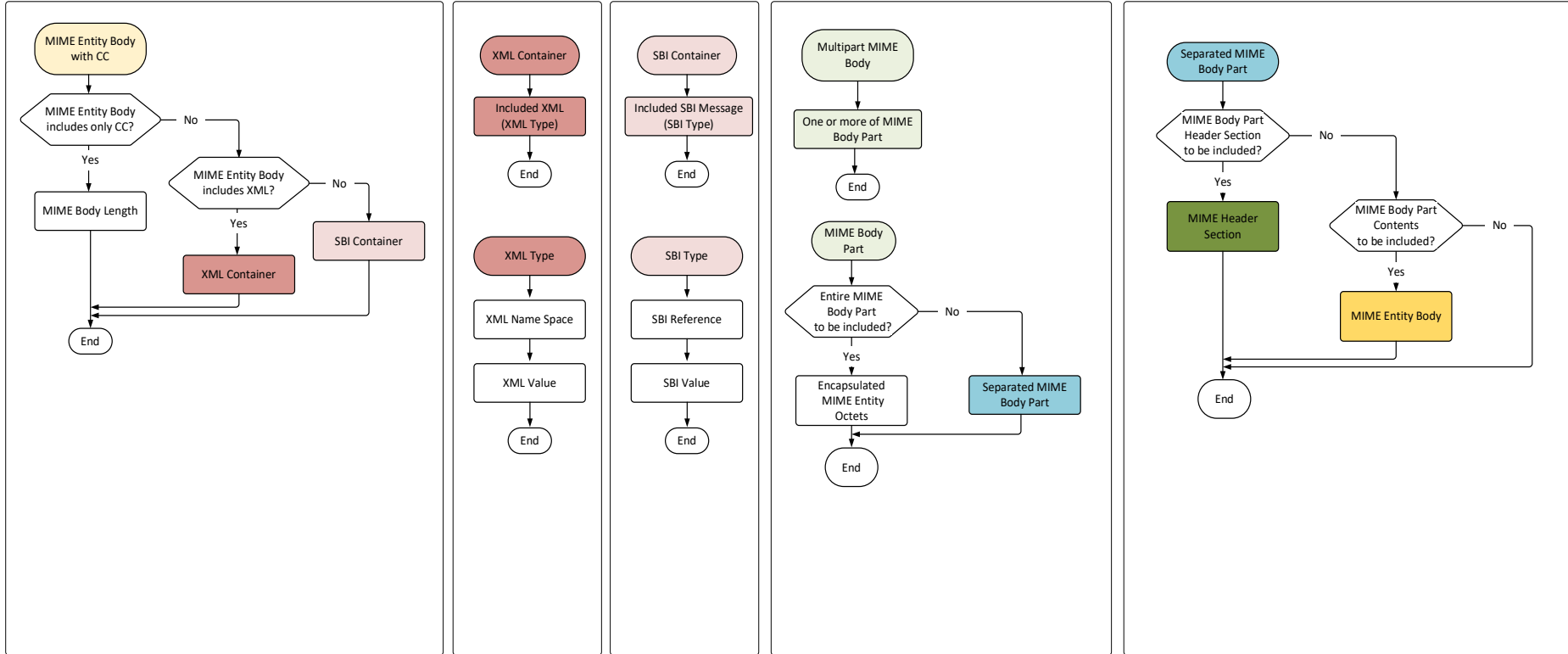
MIME – part 1



MIME – part 2



MIME – part 3



Nesting - 1

Reported Message Payload:

Choice 1: MIME Entity Container

Choice 2: MSRP Container.

MIME Entity Container:

MIME Content Type

MIME Entity:

Choice 1: Encapsulated MIME Entity

Choice 2: Separated MIME Headers and Body:

MIME Header Section:

Included MIME Header Fields:

MIME Header Field name and Field Body

One or more of Removed MIME Header Field OPTIONAL:

MIME Header Field name

MIME Header Body Length

MIME Header Hash OPTIONAL

MIME Entity Body OPTIONAL

Nesting - 2

MIME Entity Body OPTIONAL

Choice 1: MIME Entity Container

Choice 2: MIME Entity Body with CC:

Choice 1: MIME Body Length

Choice 2: XML Container:

Included XML:

XML Name Space

XML Value

Choice 3: SBI Container

Included SBI message:

SBI Reference

SBI Value

MIME Entity Body OPTIONAL

Choice 1: MIME Entity Container

Choice 2: MIME Entity Body with CC

Choice 3: Multi Part MIME Body:

One or more of MIME Body Part:

Choice 1: Encapsulated MIME Entity

Choice 2: Separated MIME Body Part

MIME Header Section OPTIONAL

MIME Entity Body OPTIONAL

Choice 4: MSRP Container:

Choice 1: Encapsulated MSRP

Choice 2: Separated MSRP:

MSRP start line

MSRP headers

MIME Entity Container OPTIONAL

MSRP end line

MIME Entity Body OPTIONAL

Choice 1: MIME Entity Container

Choice 2: MIME Entity Body with CC

Choice 3: Multi Part MIME Body:

Choice 4: MSRP Container:

Choice 5: XML Type:

XML Name Space

XML Value

Choice 6: SBI Type:

SBI Reference

SBI Value

Choice 7: MIME Body.

Proposed ASN.1 ordering

(localized)

ASN.1 - 1

```
-- =====  
-- Structures to allow reuse of externally defined structures  
-- =====  
ReportedMessagePayload ::= CHOICE  
{  
  _____ mIMEEntityContainer [1] MIMEntityContainer,  
  _____ mSRPContainer [2] MSRPContainer  
}  
-- =====  
-- Externally Defined Structures - MIME Entity Parameters  
-- =====  
MIMEntityContainer ::= SEQUENCE  
{  
  _____ contentType [1] MIMContentType,  
  _____ mIMEEntity [2] MIMEntity  
}  
MIMContentType ::= UTF8String  
MIMEntity ::= CHOICE  
{  
  _____ encapsulatedMIMEntity [1] EncapsulatedMIMEntity,  
  _____ separatedMIMEHeadersAndBody [2] SeparatedMIMEHeadersAndBody  
}  
EncapsulatedMIMEntity ::= OCTET STRING  
SeparatedMIMEHeadersAndBody ::= SEQUENCE  
{  
  _____ entityHeaderSection [1] MIMHeaderSection,  
  _____ entityBody [2] MIMEntityBody OPTIONAL  
}
```

```
-- =====  
-- Externally Defined Structures - MSRP Parameters  
-- =====  
MSRPContainer ::= CHOICE  
{  
  _____ encapsulatedMSRP [1] EncapsulatedMSRP,  
  _____ separatedMSRP [2] SeparatedMSRP  
}  
EncapsulatedMSRP ::= OCTET STRING  
SeparatedMSRP ::= SEQUENCE  
{  
  _____ startLine [1] MSRPStartLine,  
  _____ headers [2] MSRPHeaders,  
  _____ body [3] MIMEntityContainer OPTIONAL,  
  _____ endLine [4] MSRPEndLine  
}  
MSRPEndLine ::= UTF8String  
MSRPHeaders ::= UTF8String  
MSRPStartLine ::= UTF8String
```

ASN.1 - 2

```
MIMEHeaderSection ::= SEQUENCE
{
  includedHeaderFields [1] MIMEHeaderFields,
  removedHeaderFields [2] SEQUENCE OF RemovedMIMEHeaderField OPTIONAL
}
MIMEHeaderFields ::= UTF8String
RemovedMIMEHeaderField ::= SEQUENCE
{
  headerFieldName [1] MIMEHeaderFieldName,
  headerBodyLength [2] MIMEHeaderBodyLength,
  headerHash [3] MIMEHeaderHash OPTIONAL
}
MIMEHeaderBodyLength ::= INTEGER
MIMEHeaderFieldName ::= UTF8String
MIMEHeaderHash ::= OCTET STRING
```

```
MIMEEntityBody ::= CHOICE
{
  mIMEEntityContainer [1] MIMEEntityContainer,
  multipartBody [2] MultiPartMIMEBody,
  body [3] MIMEBody,
  bodyWithCommunicationsContent [4] MIMEEntityBodyWithCC,
  xMLBody [6] XMLType,
  sBIMessage [7] SBIMessage,
  mSRPMessage [5] MSRPCContainer
}
MultiPartMIMEBody ::= SEQUENCE OF MIMEBodyPart
MIMEBodyPart ::= CHOICE
{
  encapsulatedMIMEEntity [1] EncapsulatedMIMEEntity,
  separatedMIMEBodyPart [2] SeparatedMIMEBodyPart
}
SeparatedMIMEBodyPart ::= SEQUENCE
{
  bodyPartHeaderSection [1] MIMEHeaderSection OPTIONAL,
  bodyPartContents [2] MIMEEntityBody OPTIONAL
}
MIMEBody ::= UTF8String
MIMEEntityBodyWithCC ::= CHOICE
{
  mIMEBodyWithOnlyContent [1] MIMEBodyLength,
  mIMEBodyWithXML [2] XMLContainer,
  mIMEBodyWithSBIMessage [3] SBIMessage
}
MIMEBodyLength ::= INTEGER
```

ASN.1 - 3

```
-- =====  
-- Externally Defined Structures - XMLType Parameters  
-- =====  
XMLContainer ::= SEQUENCE  
{  
    includedXML [1] XMLType  
}  
XMLType ::= SEQUENCE  
{  
    xmlnsNamespace [1] XMLNamespace,  
    xmlValue [2] XMLValue  
}  
XMLNamespace ::= UTF8String  
XMLValue ::= UTF8String  
-- =====  
-- Externally Defined Structures - SBIMessage Parameters  
-- =====  
SBIMessage ::= SEQUENCE  
{  
    includedSBIMessage [1] SBIMessage  
}  
-- Details for the encoding and use of this parameter may be found in the clause  
-- that defines the xIRI that carries it. This parameter provides a generic  
-- mechanism to convey service based interface structures defined in Stage 3 working groups.  
SBIMessage ::= SEQUENCE  
{  
    sbiReference [1] SBIMessageReference,  
    sbiValue [2] SBIMessageValue  
}  
SBIMessageReference ::= UTF8String  
SBIMessageValue ::= UTF8String
```

NOKIA