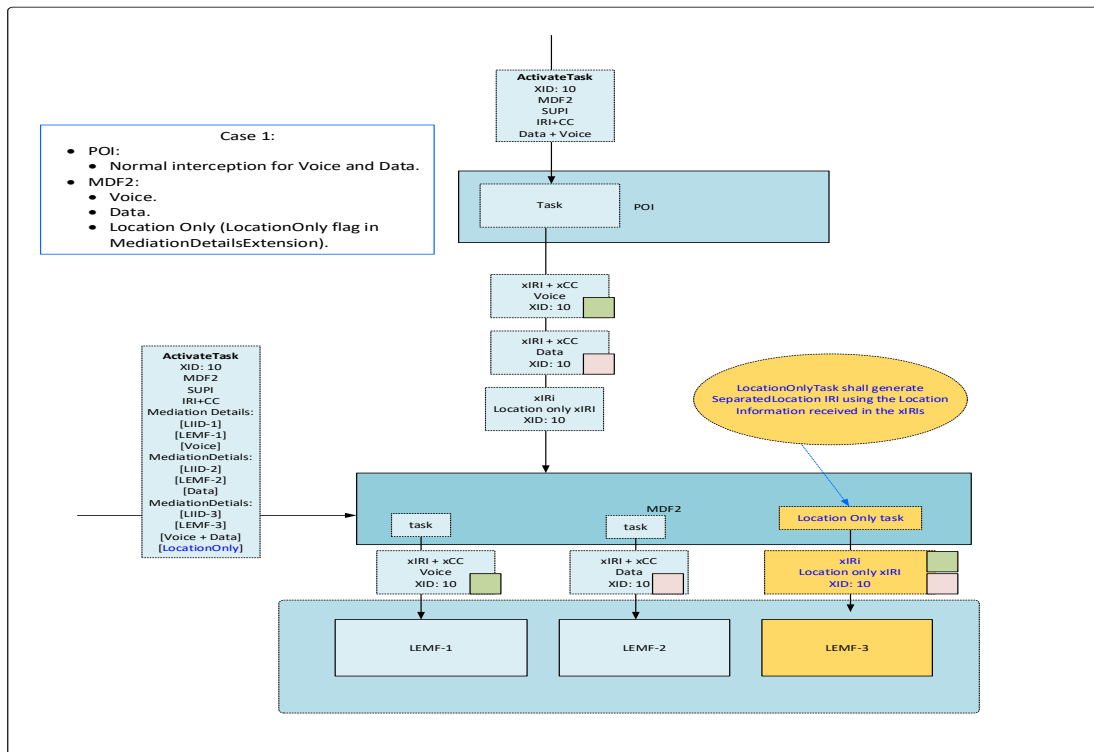


Location Only

(discussion between Nag and Jason)

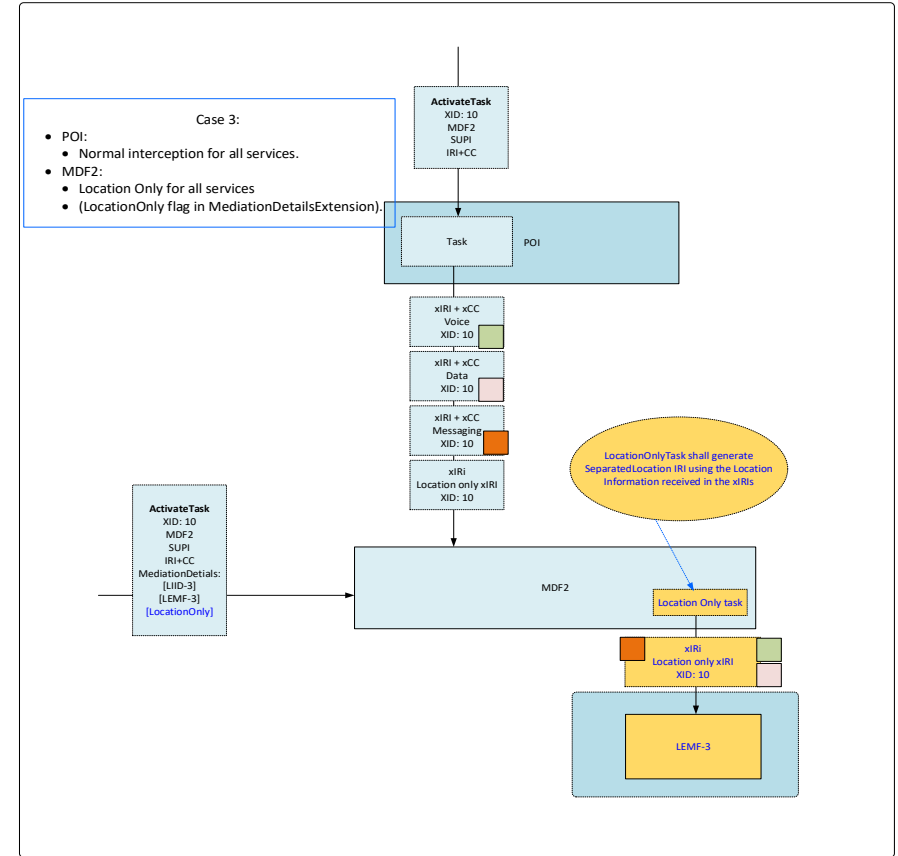
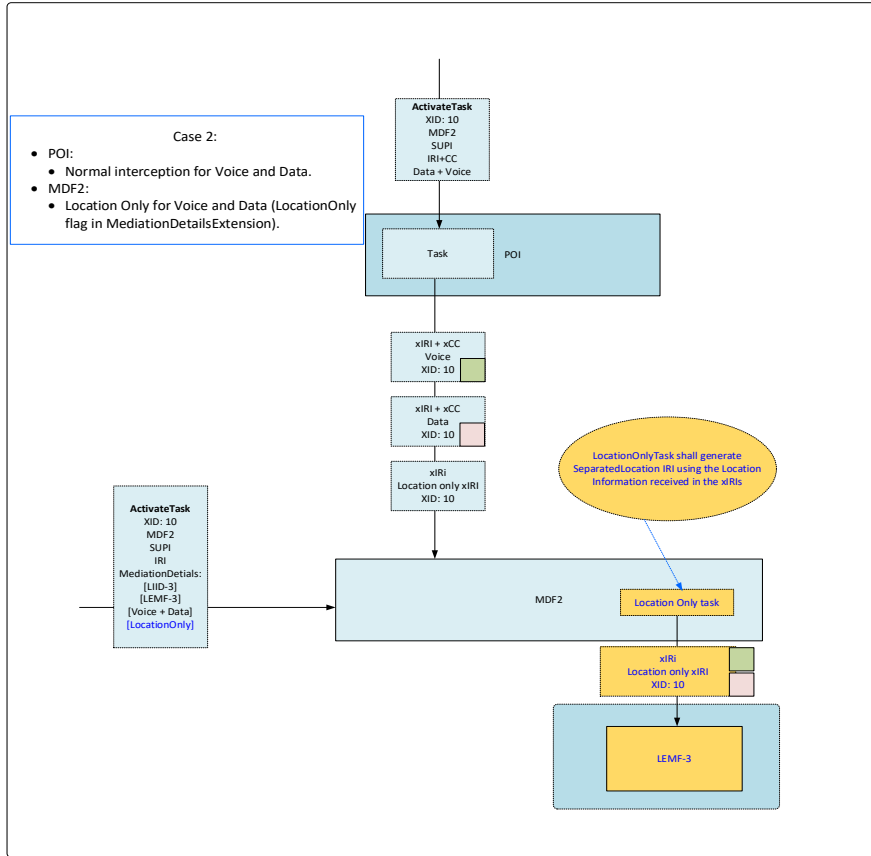
Nagaraja (Nag) Rao; Boca Raton, FL

Case 1: Location Only along with the regular interception (no impacts to the POI).



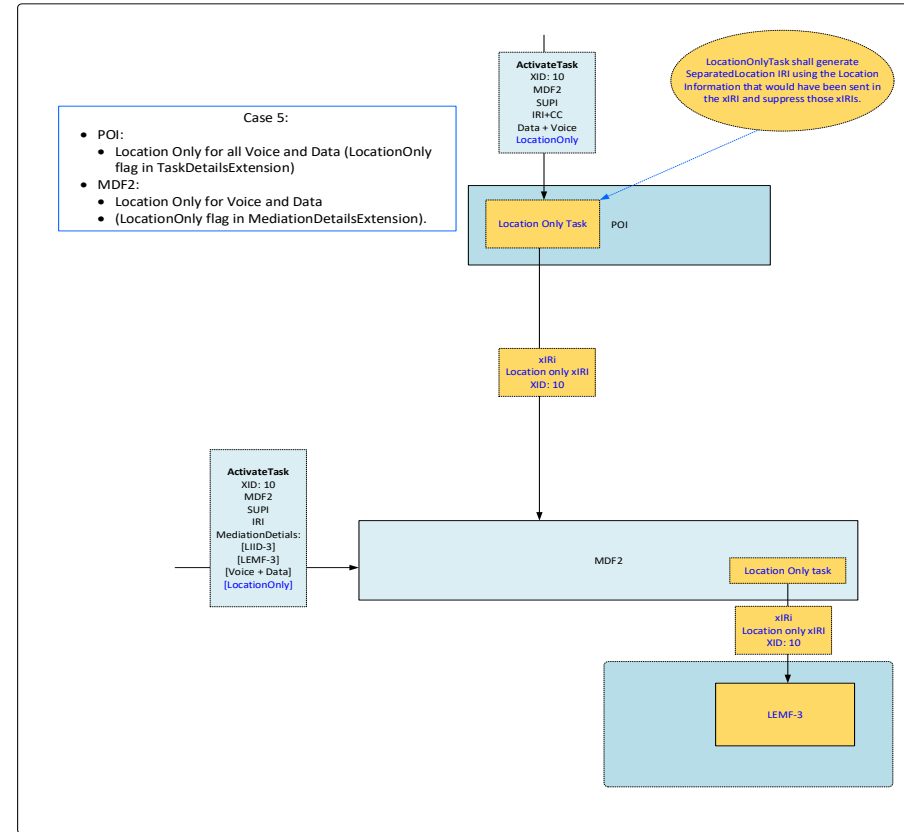
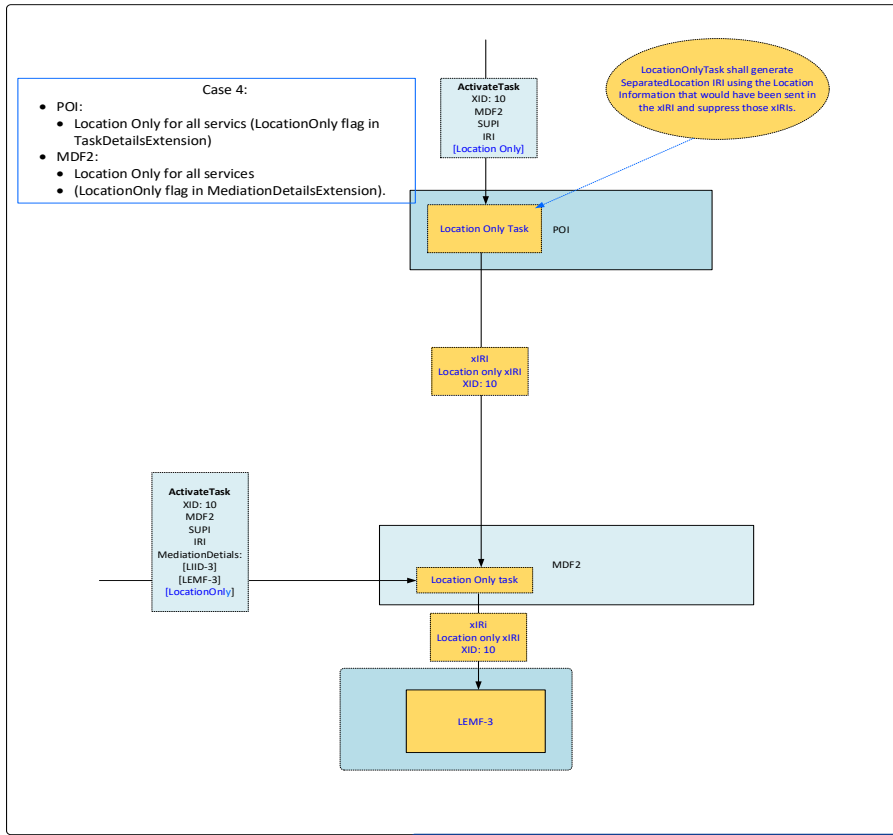
- The MDF2 shall generate the SeparatedLocationReport IRI from the location information received in the xIRIs.

Case 2 and Case 3: LocationOnly flag in only in MediationDetailsExtension to MDF2



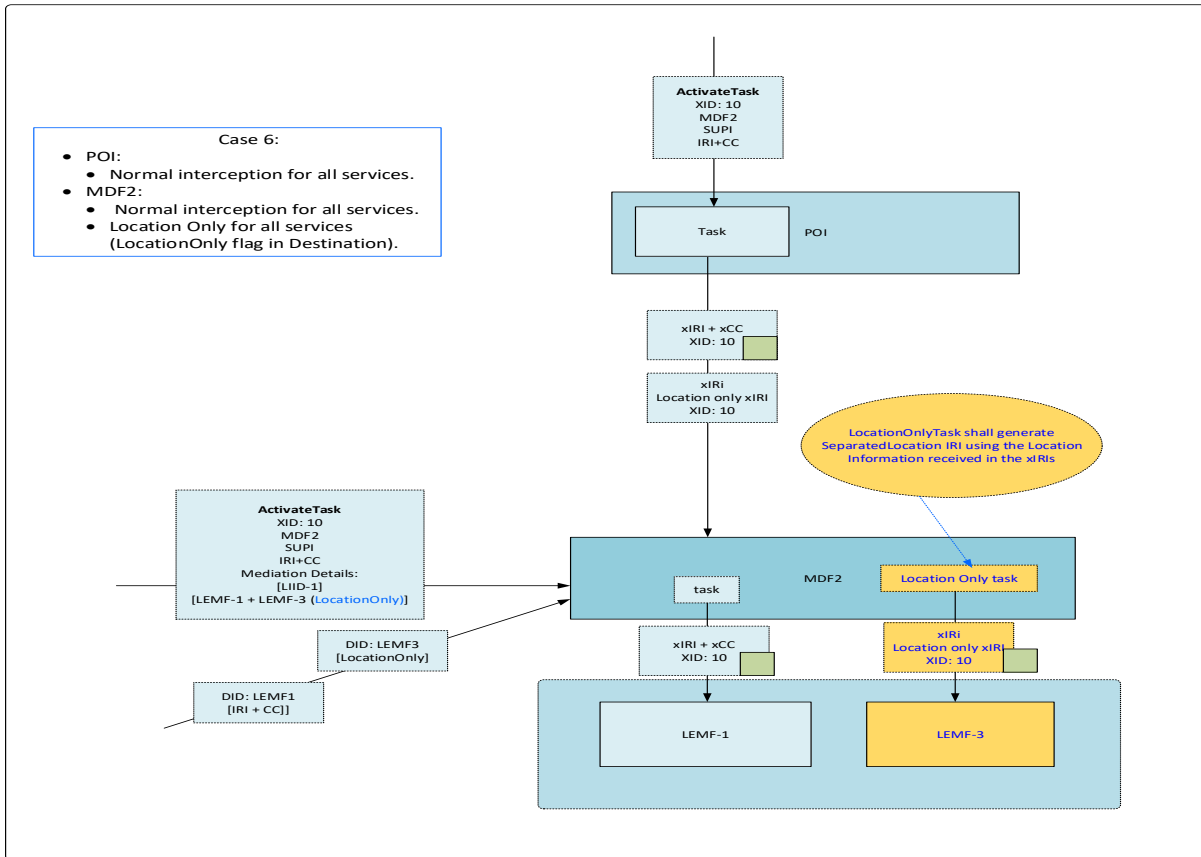
• The MDF2 shall generate the SeparatedLocationReport IRI from the location information received in the xIRIs.

Case 4 and Case 5: LocationOnly flag in TaskDetailsExtension to POIs



• The POI shall generate the SeparatedLocationReport xIRI if location would have been reported in the xIRI and suppress those xIRIs.

Case 6: LocationOnly flag in Destination Details



- The MDF2 shall generate the SeparatedLocationReport IRI from the location information received in the xIRIs.

NOKIA