



A GLOBAL INITIATIVE

TSG GERAN

TSG SA#17

# *TSG GERAN Report*

*to*

## *TSG-SA#17*

**TSG-GERAN Chairman**

**Niels Peter Skov Andersen**

**Motorola**



**Tdoc SP-020600**



# ***TSG GERAN work area (1/2)***



A GLOBAL INITIATIVE

TSG GERAN

TSG SA#17

## **TSG GSM/EDGE Radio Access Network (TSG-GERAN)**

- **GERAN Radio aspects, and interfaces**
- **RF aspects of GERAN**
- **Specifications for GERAN radio performance and RF system aspects**
- **GERAN Radio Layer 1 specification**
- **GERAN Radio Layer 2 specification**
- **GERAN Radio Layer 3 RR specification**

A GLOBAL INITIATIVE

# ***TSG GERAN work area (2/2)***



- **A interface specification, Gb interface specification**
- **Internal GERAN interface specifications such as Abis, and Ater (CCU-TRAU)**
- **Conformance test specifications for testing of all aspects of GERAN base stations**
- **Conformance test specifications for testing of all aspects of GERAN terminals**
- **GERAN specific O&M specifications for the nodes in the GERAN**

•

A GLOBAL INITIATIVE

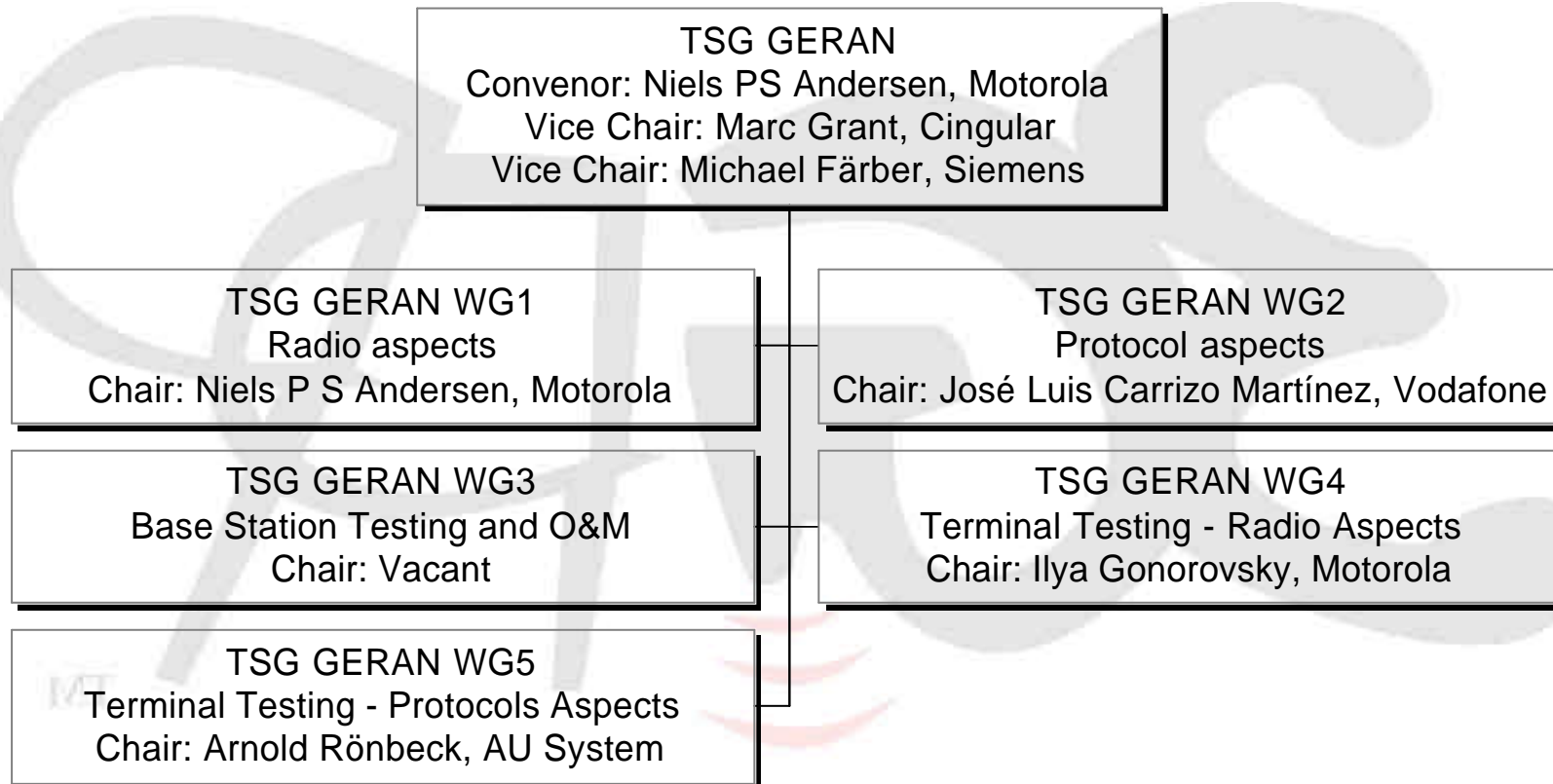
# Organisation of TSG GERAN (1/4)



A GLOBAL INITIATIVE

TSG GERAN

TSG SA#17



A GLOBAL INITIATIVE

# ***Organisation of TSG GERAN*** ***(2/4)***



## **TSG GERAN WG1 – Radio Aspects**

- **Chairman: Niels Peter Skov Andersen, Motorola**
- **RF aspects of GERAN**
- **GERAN radio performance and RF system aspects**
- **Ater (CCU-TRAU)**

## **TSG GERAN WG2 – Protocol Aspects**

- **Chairman: José Luis Carrizo Martínez, Vodafone**
- **GERAN Radio Layer 2 specification**
- **GERAN Radio Layer 3 RR specification**
- **A interface specification, Gb interface specification**
- **Internal GERAN interface specifications such as Abis**

# ***Organisation of TSG GERAN*** ***(3/4)***



## **TSG GERAN WG3 – Base Station Testing and O&M**

**Chairman: Vacant**

- **Conformance test specifications for testing of all aspects of GERAN base stations**
- **GERAN specific O&M specifications for the nodes in the GERAN**

# ***Organisation of TSG GERAN*** **(4/4)**



## **TSG GERAN WG4 – Terminal Testing – Radio Aspects**

**Chairman: Ilya Gonorovsky**

- **Conformance test specifications for testing of Lower layers including RLC/MAC**

## **TSG GERAN WG5 – Terminal Testing – Protocol Aspects**

**Chairman: Arnold Rönbeck, AU System**

- **Conformance test specifications for testing Protocol aspects above the RLC/MAC**

A GLOBAL INITIATIVE

# ***GPRS/EDGE***



A GLOBAL INITIATIVE

TSG GERAN

TSG SA#17

- **Specifications stable no major issues detected for frozen Releases (R97, R98, R99, Release 4, Release 5)**
- **TBF establishment in dedicated modes deleted from Release 5 and onwards**
- **Corrections to DTM**
- **CBQ2 removed as it was not working correctly and no need for the functionality was identified**

A GLOBAL INITIATIVE



# ***Multimode GSM – 3G***




- **No major changes**
- **The UTRAN frequency list removed from the 2G to 3G handover**
  - Usage of blind search on SC groups is lost
- **Corrections to the format used in TS 08.08**

A GLOBAL INITIATIVE

# LCS



- Only smaller corrections for LCS R98 
- LCS support for GPRS completed
- Discussions ongoing regarding the potential for improvement of the LCS performance
- TDOA feasibility study completed – no decision yet whether to pursue TDOA further

A GLOBAL INITIATIVE

# ***Support for Codecs***



- **The discussion of potential changing the performance requirements for AMR on GMSK channels due to errors in the original simulations has been re-open as mobile manufacturer indicates problems fulfilling the requirements.**  
**Relaxation agreed for Release 98 ✍ 4**  
**Requirements kept for Release 5**
- **TSG GERAN has completed work on 8-PSK channels for AMR and WB-AMR with exception of the final radio performance requirements**

# ***GERAN I<sub>u</sub>-mode***



- **I<sub>u</sub>-mode broadcast capacity believed solved through usage of PBCCH**
- **RRC (TS 44.118) – Completed**
  - Numerous basic corrections made at TSG GERAN #11
- **RLC/MAC – Completed**
  - High number of documents with corrections
- **Iur-g**
  - Open issues cleared
  - CRRM correction
  - Creation of a TS for stage 2

# ***GERAN A/Gb enhancements***



A GLOBAL INITIATIVE

TSG GERAN

TSG SA#17

- **Feasibility study reduced to cover conversational class QoS and its consequences**
- **Work started (Work items agreed) on**
  - **Multiple TBF**
  - **Streaming**

TM

A GLOBAL INITIATIVE

# ***Other Technical Issues***



- **Work started on unequal error protection – TSG GERAN is in dialogue with TSG SA WG2 and TSG RAN WGs**
- **New work item on introduction of Flexible Layer One Concept (FLOC)**
  - Work started on the low layers (WG1)
- **Initial discussions of interference cancellation for GSM is ongoing**
- **MBMS**
  - Radio Requirements document to be developed with RAN WG2 as primary responsible

# Testing <sup>(1/2)</sup>



- **Main focus has been on testing of:**
  - Radio & Layer 1
  - GPRS
  - EDGE
  - Selection/Reselection & Handover (2.5G, 3G)
  - LCS
  - Tracking of core specification changes
  - AMR (Narrow band)
  - DTM

A GLOBAL INITIATIVE

# Testing (2/2)



- The members have been requested to provide input for the development of Test Cases for:
  - Wideband AMR
  - RLC/MAC (Iu interface CS and PS domain)
  - Enhanced power control
  - AMR 8 PSK HR
  - Selection/Reselections (GERAN I<sub>u</sub>-mode >UTRAN)
  - Handover (GERAN I<sub>u</sub>-mode >UTRAN PS).



# ***Specification and version numbering***



- Old specification numbers and version numbers are kept for Phase 1, Phase 2, Release 96, Release 97, Release 98, and Release 99
- For Releases after Release 99 specification numbering to follow 3GPP format xx.yyy and version number aligned with other TSGs, e.g next release will be version 4.x.y.
- New specification numbers to be derived from the old specification number  
 $ab.cd \Rightarrow (40+ab).0cd$   
e.g  
 $05.08 \Rightarrow 45.008$

A GLOBAL INITIATIVE

# ***Future TSG GERAN Plenary meetings***



- TSG GERAN #12 18 - 22 November 2002, France**
- TSG GERAN #13 3 - 7 February 2003**
- TSG GERAN #14 7-11 April 2003**
- TSG GERAN #15 24 – 26 June 2003**
- TSG GERAN #16 25-29 August 2003**
- TSG GERAN #17 17-21 November 2003**

*Extract of GERAN work programme and list of CR handled at TSG GERAN #10 & #11 is attached to this report*

A GLOBAL INITIATIVE

## Work item status and approval time frame

This list reflects the work items running under the responsibility of TSG GERAN.

Feature	Building block	Work task	Level of completion	Date of completion	Status
GERAN/UTRAN interface evolution 1 GP-000481	Evolution of lu ps	<ul style="list-style-type: none"> <li>Identification of GERAN requirements on lu ps</li> <li>Update of specifications</li> </ul>		Nov 2001 Mar 2002	Ready for R5. Closed
GERAN/UTRAN interface evolution 2 GP-010417	Evolution of lu cs GP-000430	<ul style="list-style-type: none"> <li>Identification of GERAN requirements on lu cs</li> <li>Update of specifications</li> </ul>		Apr 2002 Jun 2002	Ready for R5. Closed
Low chip rate TDD option (UTRAN)	Low chiprate TDD interworking with GERAN GP-000432	<ul style="list-style-type: none"> <li>Handover and Cell Selection / Reselection to UTRA 1.28Mcps TDD</li> </ul>			Ready for R4. Closed
GERAN improvements 1 GP-000433	Gb over IP GP-000434	IP-fication of Gb <ul style="list-style-type: none"> <li>Concept</li> <li>Changes to 08.16, 08.18</li> </ul>			Ready for R4. Closed
GERAN improvements 2 GP-012812	Gb enhancements GP-000436	Intra BSC NACC <ul style="list-style-type: none"> <li>Concept</li> <li>Changes in 03.64</li> <li>Changes in 04.60</li> <li>Changes in 44.008</li> </ul>			Ready for R4. Closed
	MS conformance test for Intra BSC NACC GP-012811	<ul style="list-style-type: none"> <li>Changes in 51.010</li> </ul>	10%	Dec 2002	Started
GERAN improvements 3 GP-010418	Evolution of the transport for A GP-010910	<ul style="list-style-type: none"> <li>Definition of a new A/Ater Interface Transport Layer option based on the lu Interface Transport Layer</li> <li>Adaptation of the Layer 3 BSSMAP procedures as required.</li> </ul>	0%	Aug 2002	Ongoing
GERAN Improvements 4 GP-010363	Gb enhancements 2 GP-010363	Stage 2  Stage 3 (changes in 44.060) <ul style="list-style-type: none"> <li>Definition of enhanced countdown procedure</li> <li>Definition of enhanced TBF release procedure</li> </ul>			Ready for R4. Closed
GERAN Inter BSC NACC improvements over the Gb Interface GP-012313	Modification of Gb protocols for GERAN Inter BSC NACC over the Gb interface GP-012314	Stage 3 (changes to ) <ul style="list-style-type: none"> <li>48.018</li> </ul>		Apr 2002	Ready for R5. Closed
	Modification of core network protocols for GERAN Inter BSC NACC for Gb interface GP-011877	Stage 2 <ul style="list-style-type: none"> <li>Concept</li> <li>23.060 change – Definition of Inter BSC NACC</li> </ul> Stage 3 (changes to ) <ul style="list-style-type: none"> <li>29.060</li> </ul>		Nov 2001  Apr 2002	
GERAN support for IP multimedia GP-010420	GERAN Header adaptation GP-010421	Header adaptation: <ul style="list-style-type: none"> <li>Definition of compression and removal modes for PDCP protocol</li> <li>Conceptual description in stage 2</li> <li>Necessary changes on stage 3 regarding header removal</li> </ul>	30%	Sept 2000  Oct 2001 Dec 2002	Ongoing

	GERAN Radio access bearer design for IP multimedia GP-010422	MuM control signalling for conversational multimedia services. <ul style="list-style-type: none"> <li>• Identification of requirements</li> <li>• Necessary modifications due to SIP</li> </ul>	<u>2%</u>	Feb 2002 Jun 2002	Ongoing
	GERAN MS Conformance test for support of IP multimedia GP-010424	<ul style="list-style-type: none"> <li>• MS test</li> </ul>	<u>0%</u>	Dec 2002	Not started
	GERAN BTS Conformance test for support of IP multimedia GP-010425	<ul style="list-style-type: none"> <li>• BTS test</li> </ul>	<u>0%</u>	Dec 2002	Not started
Alignment of 3G functional split and lu GP-021256	GERAN user / control plane GP-021255	Alignment with UMTS bearer concept <ul style="list-style-type: none"> <li>• Stage 2</li> </ul>		Jun 2001	Ready for R5.
		<ul style="list-style-type: none"> <li>• Adoption of the UTRAN PDCP</li> </ul>		Dec 2001	
		<ul style="list-style-type: none"> <li>• Development of RLC / MAC</li> </ul>		Aug 2002	
		<ul style="list-style-type: none"> <li>• Development of GERAN RRC</li> </ul>		Jun 2002	
		<ul style="list-style-type: none"> <li>• Ciphering and integrity protection concept paper</li> </ul>		Apr 2002	
		<ul style="list-style-type: none"> <li>• Multiple TBF or equivalent Concept paper</li> </ul>		Feb 2002	
		<ul style="list-style-type: none"> <li>• Paging concept</li> </ul>		Apr 2002	
		<ul style="list-style-type: none"> <li>• Dedicated physical subchannels. Includes traffic and control channels</li> </ul>		Nov 2001	
		<ul style="list-style-type: none"> <li>• lu support and broadcast concept</li> </ul>		Apr 2002	
		<ul style="list-style-type: none"> <li>• Impact of using RLC instead of LAPDm concept</li> </ul>		Feb 2002	
		<ul style="list-style-type: none"> <li>• Contention resolution, mobile-station identity, and access concept</li> </ul>		Nov 2001	
		<ul style="list-style-type: none"> <li>• PDCP concept</li> </ul>		Apr 2002	
		<ul style="list-style-type: none"> <li>• Downlink delayed TBF release</li> </ul>		Aug 2002	
		<ul style="list-style-type: none"> <li>• Add transparent RLC Concept</li> </ul>		Feb 2002	
<ul style="list-style-type: none"> <li>• Handover concept</li> </ul>		Feb 2002			
<ul style="list-style-type: none"> <li>• Physical layer alignment with UMTS bearer concept</li> <li>• Control channels in 45.003</li> <li>• Receiver performance in 45.005 for PDTCH/TCH and control channels</li> </ul>		Jun 2001			
lu rg interface GP-010428	Inter BSS interface Identification of requirements Stage 2 Adoption of relevant parts from lu r Complementation with GERAN specifics New stage 3			Jun 2002	Ready for R5. Closed

		Inter BSS-RNS interface Identification of requirements Stage 2 Adoption of relevant parts from Iu-r Complementation with GERAN specifics New stage 3		Jun 2002	Ready for R5. Closed
	Voice over GERAN PS and CS concept  GP-021252	Voice over GERAN PS and CS concept <ul style="list-style-type: none"> <li>Architecture for A, Iu-CS and Iu-PS</li> <li>Handover</li> <li>RTP payload</li> </ul>		Nov 2001	Ready for R5. Closed
	GERAN MS Conformance test for GERAN interface evolution  GP-021253	<ul style="list-style-type: none"> <li>MS test</li> </ul>	0%	Dec 2002	Not started
	GERAN BTS Conformance test for GERAN interface evolution  GP-021254	<ul style="list-style-type: none"> <li>BTS test</li> </ul>	0%	Dec 2002	Not started
Enhanced A/Gb feasibility study GP-0225654233	Enhanced A/Gb feasibility study GP-0225654233	<ul style="list-style-type: none"> <li>Requirements for the support of conversational services</li> <li>Identification of the different building blocks for the provision of conversational services on the existing A/Gb protocol stack</li> <li>Outline of impact and feasibility of these building blocks and their different solutions</li> <li>Impact on 3GPP architecture and requirement to co-ordinate with other TSGs (CN, SA)</li> <li>Standardisation effort</li> <li>Dependency to other features</li> </ul>	20%	Nov/Aug 2002	Started
<u>Enhancement of Broadcast and Introduction of Multicast (in responsibility of TSG SA1)</u>	<u>Support of the Multimedia Broadcast Multicast Service (MBMS) in GERAN</u> GP-022566	<ul style="list-style-type: none"> <li>Impact on the logical and physical channels</li> <li>Simultaneous support of MBMS services</li> <li>Simultaneous support of MBMS and non-MBMS services</li> <li>Resynchronisation at cell change</li> <li>Decision making process between point-to-point or point-to-multipoint configurations</li> <li>MBMS channel allocation procedures to multiple MSs</li> <li>Changes to the Gb interface</li> <li>GERAN-specific changes to the Iu-PS interface</li> <li>Interaction between MBMS and Iu-flex</li> <li>Security aspects</li> <li>MS conformance tests</li> </ul>	0%	June 2003	Started

Flow control supporting an MS with multiple data flows with different QoS over the Gb interface GP-020964	Update of stage 2 specifications GP-02xxxx	<ul style="list-style-type: none"> <li>• Concept document 23.060 (changes to) – Flow Control</li> </ul>		June 2002 June 2002	Started
	Modification of BSSGP protocol  GP-021508	Stage 3 (changes to ) <ul style="list-style-type: none"> <li>• 48.018</li> </ul>		June 2002	Ready for release 5. ClosedStarted
Multiple TBF in A/Gb mode GP-021209	Multiple TBF in A/Gb mode GP-021209	<ul style="list-style-type: none"> <li>• Multiple TBF Concept paper</li> <li>• Multiple TBF Stage 2 (43.064) CRs</li> <li>• Multiple TBF Stage 3 (44.060) CRs</li> </ul>	50%	Nov-Aug 2002	Started
	Multiple TBF in A/Gb mode – MS testing GP-022098	<ul style="list-style-type: none"> <li>• MS conformance tests</li> </ul>	0%	Jun-Aug 2003	Started
Seamless support of streaming services in A/Gb mode GP-022561	Identification of requirements for streaming GP-022564	<ul style="list-style-type: none"> <li>• Requirements</li> </ul>	0%	Nov 2002	Started
	Performance study of cell change mechanisms GP-022562	<ul style="list-style-type: none"> <li>• Performance of NACC</li> <li>• Performance of cell change in DTM for the PS domain</li> <li>• Handover</li> </ul>	0%	Nov 2002	Started
	Reduction of service interruption times and packet loss during mobility procedures GP-022563	<ul style="list-style-type: none"> <li>• Optimisations of existing mechanisms/procedures</li> <li>• Inter-system NACC</li> <li>• PS Handover (within GERAN and between GERAN and UTRAN)</li> <li>• Dependency to other features</li> </ul>	0%	Feb 2003	Started
Flexible Layer One for GERAN GP-021018	Realisation of a Flexible Layer One GP-021019	Concept Document Technical Report Architecture in 45.001 and 43.051 Multiplexing in 45.002 Channel Coding in 45.003 Performance Requirements in 45.005 Radio subsystem link control in 45.008 Requirements in 44.004	30%	Nov 2002 Jan 2003	Started
	Signalling and protocol support for a Flexible Layer One GP-021020	Modifications to RLC/MAC in 44.060 and 44.160  Modifications to RRC in 44.118 and 44.018	10%	Nov 2002 Jan 2003	Started
	Security for a Flexible Layer One GP-021021	Ciphering in 44.160, 44.118, 44.060 and 44.018	10%	Nov 2002 Jan 2003	Started
	GERAN MS Conformance test for the Flexible Layer One GP-021022	MS Test in 51.010	0%	Jun 2003	Started
	GERAN BTS Conformance test for the Flexible Layer One  GP-021023	BTS Test in 51.021	0%	Jun 2003	Started
Addition of frequency bands to GSM GP-022072	Addition of frequency bands to GSM – Changes to core specs GP-022073	45.005 New frequency ranges 45.050 Scenarios for new frequencies 24.008 Classmark information elements 45.008 Add frequency ranges 45.001 Add frequency and channels 43.030 Add frequency ranges 43.022 Add channels to be searched	20%	Aug 2002	Started

	Addition of frequency bands to GSM – Changes for conformance tests GP-022074	51.010-1 Add testing	0%	Aug 2002	Started
Enhanced Power Control GP-012748	Realization of Enhanced power control and signaling support GP-012749	Concept Changes to 43.051 Changes to 44.004 Changes to 44.018 Changes to 48.058 Changes to 45.001 Changes to 45.002 Changes to 45.003 Changes to 45.008		Nov 2001	Ready for Rel 5. Closed
	GERAN MS Conformance test for Enhanced Power Control GP-012750	<ul style="list-style-type: none"> <li>MS test</li> </ul>	0%	Dec 2002	Not started
	GERAN BTS Conformance test for Enhanced Power Control GP-012751	<ul style="list-style-type: none"> <li>BTS test</li> </ul>	0%	Dec 2002	Not started
8PSK AMR HR GP-012752	Definition of channel coding, performance requirements and signaling support GP-012753	<ul style="list-style-type: none"> <li>Concept</li> <li>Changes to 44.018</li> <li>Changes to 45.001</li> <li>Changes to 45.002</li> <li>Changes to 45.003</li> <li>Changes to 45.005</li> <li>Changes to 24.008</li> <li>Changes to 48.058</li> </ul>		Jun 2002	Ready for R5. Closed
	GERAN MS Conformance test for 8PSK HR GP-012754	<ul style="list-style-type: none"> <li>MS test</li> </ul>	0%	Dec 2002	
	GERAN BTS Conformance test for 8PSK HR GP-012755	<ul style="list-style-type: none"> <li>BTS test</li> </ul>	0%	Dec 2002	
GERAN enhancements for streaming services 1 GP-010430	GERAN enhancements for streaming services 1 GP-010430	<ul style="list-style-type: none"> <li>Concept</li> <li>RLC protocol enhancement (SDU Discard)</li> </ul>		Oct 2001 Nov 2001????	Ready for R5. Closed
GERAN enhancements for streaming services 2 GP-010429	GERAN enhancements for streaming services 2 GP-010429	Usage of ECSD Stage 2 Stage 3 <ul style="list-style-type: none"> <li>RLC PDU formats</li> <li>MAC header</li> </ul>		Jun 2001 Jun 2002	Ready for R5. Closed
Intra Domain Connection of RAN Nodes to Multiple CN Nodes: Overall System Architecture GP-020254	GERAN work for Intra Domain Connection of RAN Nodes to Multiple CN Nodes GP-020254	Stage 2 (changes to ) <ul style="list-style-type: none"> <li>43.051 Introduction of support for IDNNS in GERAN lu mode</li> </ul> Stage 3 (changes to ) <ul style="list-style-type: none"> <li>48.016 Use of Gb interface concepts when a network applies IDNNS</li> <li>48.018 Include MSC/VLR identity in CS IMSI paging</li> </ul>		Jun 2002	Ready for R5. Closed, accept changes for Gb over IP
700 MHz spectrum support GP-000449	GERAN support for the 700 MHz band	<ul style="list-style-type: none"> <li>Signaling support</li> <li>Physical layer definitions</li> <li>Receiver performance and RF budget</li> </ul>			Ready for R4. Closed

	GERAN MS Conformance test for 700 MHz band  GP-000451	<ul style="list-style-type: none"> <li>MS test</li> </ul>		Jun 2001	Closed
	GERAN BTS Conformance test for GERAN interface evolution  GP-000452	<ul style="list-style-type: none"> <li>BTS test</li> </ul>	0%	Jun 2001	Ongoing
Real Time QoS for packet services including VoIP (UTRAN)	HOs: maintenance of real-time QoS while moving between cells in the PLMN including inter-SGSN change and SRNS relocation or possibly other mechanisms (UTRAN)  GP-010431	Handover for the packet switched domain <ul style="list-style-type: none"> <li>Stable RT handover report 25.936 including header removal</li> <li>Update of stage 2</li> <li>Update of relevant stage 3 specs</li> </ul>		Nov 2001	Closed
Wideband telephony services (UMTS)	Support of WB AMR in GERAN  GP-000453	GMSK and 8PSK WB FR / HR support <ul style="list-style-type: none"> <li>Channel coding in 45.003</li> <li>Signalling for A interface</li> <li>Signalling for lu</li> <li>Link adaptation in 45.009</li> <li>Receiver performance in 45.005</li> </ul>		Apr 2002 Nov 2001  Jun 2002	Ready for R5. Closed
	GERAN MS Conformance test for WB AMR  GP-000454	<ul style="list-style-type: none"> <li>MS test</li> </ul>	0%	Dec 2002	Not started
	GERAN BTS Conformance test for WB AMR  GP-000455	<ul style="list-style-type: none"> <li>BTS test</li> </ul>	0%	Dec 2002	Not started
Location service (UMTS)	LCS interoperability aspects to GERAN  GP-000456	<ul style="list-style-type: none"> <li>Co-ordinated development of GSM LCS Phase 2 and UMTS LCS, S2 and GERAN</li> </ul>			Ready for R5. Closed
	Location service for GERAN R4 GP-010932	<ul style="list-style-type: none"> <li>Work for aligning LCS R4 CN and GERAN</li> </ul>			Ready for R4. Closed
	Location Services (LCS) for GERAN in A/Gb Mode GP-011925	<ul style="list-style-type: none"> <li>GERAN LCS Stage Two</li> <li>Gb interface support for LCS</li> <li>L3 protocol support for LCS</li> <li>Stage 3 specifications</li> </ul>		Feb. 2002	Ready for Rel-5. Closed



	Location Services (LCS) for GERAN in lu Mode  GP-011926	<ul style="list-style-type: none"> <li>• GERAN LCS stage 2</li> <li>• lu interface support for LCS</li> <li>• lur-g interface support for LCS</li> <li>• RRC protocol support for LCS</li> <li>• Additional impacts on Broadcast of LCS data on packet channels</li> <li>• Stage 3 specifications</li> </ul>		Stage 2- GERAN #8 Feb. 2002 Stage 3 – GERAN #9 Jun 2002	Ready for R5. Closed
	GERAN MS Conformance test for LCS  GP-000458	<ul style="list-style-type: none"> <li>• Develop LCS MS test case work plan (Release 98/99/4)</li> <li>• Develop LCS MS test cases</li> </ul>	?%	Dec 2002 (#11)	Ongoing
	GERAN BTS Conformance test for LCS  GP-000459	<ul style="list-style-type: none"> <li>• Develop LCS BTS test case work plan (Release 99/99/4)</li> <li>• Develop LCS BTS test cases</li> </ul>	?%	Dec 2002	Work has not started
Uplink feasibility study GP-012794	Uplink TDOA feasibility study GP-012794	<ul style="list-style-type: none"> <li>• Performing of a feasibility study</li> </ul>		Jun 2002	Closed.

- DTM MS test work item to be included in the next revision

### 3GPP TSG GERAN

#### Status of Change Request presented to TSG GERAN #10 & TSG GERAN #11

Tdoc	Title	Source	Status
GP-021617	CR 03.22-A056 rev 1 Usage of CBQ2 (R99)	Siemens	Withdrawn
GP-021606	CR 03.22-A057 Removal of CBQ2 (R99)	Siemens	Revised
GP-021921	CR 03.22-A057 rev 1 Removal of CBQ2 (R99)	Siemens	Revised
GP-022064	CR 03.22-A057 rev 2 Removal of CBQ2 (R99)	Siemens	Approved
GP-022365	CR 03.22-A058 MS behaviour in case of a failed authentication of the network (R99)	Siemens	Revised
GP-022703	CR 03.22-A058 rev 1 MS behaviour in case of a failed authentication of the network (R99)	Siemens	Approved
GP-022535	CR 03.30-A012 Correction of Mean Effective Gain for GSM 400 (R99)	Siemens	Rejected
GP-022377	CR 04.08-A776 Removal of inter cell handover on dedicated resources for TBF (R97)	Mitsubishi	Withdrawn
GP-022378	CR 04.08-A778 Removal of inter cell handover on dedicated resources for TBF (R98)	Mitsubishi	Withdrawn
GP-022383	CR 04.08-A780 PDCH assignment failure on dedicated channels (R97)	Mitsubishi	Withdrawn
GP-022384	CR 04.08-A782 PDCH assignment failure on dedicated channels (R98)	Mitsubishi	Withdrawn
GP-022388	CR 04.08-A784 Correction of dedicated resources establishment for TBF (R97)	Mitsubishi	Withdrawn
GP-022389	CR 04.08-A786 Correction of dedicated resources establishment for TBF (R98)	Mitsubishi	Withdrawn
GP-022393	CR 04.08-A788 Correction of T3134 value (R97)	Mitsubishi	Withdrawn
GP-022394	CR 04.08-A790 Correction of T3134 value (R98)	Mitsubishi	Withdrawn
GP-022523	CR 04.08-A792 Corrections to one and two phase packet access via dedicated channel (R97)	Mitsubishi	Withdrawn
GP-022524	CR 04.08-A794 Corrections to one and two phase packet access via dedicated channel (R98)	Mitsubishi	Withdrawn
GP-022547	CR 04.08-A796 Clarification on Bearer capability IE (R98)	Siemens	Withdrawn
GP-022457	CR 04.08-Axxx Corrections to one and two phase packet access via dedicated channel (R97) – WITHDRAWN	Mitsubishi	Withdrawn
GP-022458	CR 04.08-Axxx Corrections to one and two phase packet access via dedicated channel (R98) – WITHDRAWN	Mitsubishi	Withdrawn
GP-021631	CR 04.14-014 § 5.4.2.2 - GPRS Test Mode B and RLC Block Loopback - Action on receipt of corrupt block	Anite	Revised
GP-022037	CR 04.14-A014 rev 1 GPRS Test Mode B and RLC Block Loopback - Action on receipt of corrupt block (R99)	Anite Telecoms	Revised
GP-022049	CR 04.14-A014 rev 2 GPRS Test Mode B and RLC Block Loopback - Action on receipt of corrupt block (R99)	Anite Telecoms	Approved
GP-022035	CR 04.14-A015 GPRS Test Mode B and RLC Block Loopback - Action on receipt of corrupt block (R97)	Anite Telecoms	Revised
GP-022047	CR 04.14-A015 rev 1 GPRS Test Mode B and RLC Block Loopback - Action on receipt of corrupt block (R97)	Anite Telecoms	Approved
GP-022036	CR 04.14-A016 GPRS Test Mode B and RLC Block Loopback - Action on receipt of corrupt block (R98)	Anite Telecoms	Revised
GP-022048	CR 04.14-A016 rev 1 GPRS Test Mode B and RLC Block Loopback - Action on receipt of corrupt block (R98)	Anite Telecoms	Approved
GP-021825	CR 04.18-A159 Corrections and Clarifications on Enhanced Measurement Parameters(R 99)	Siemens	Withdrawn
GP-021547	CR 04.18-A253 rev 1 Correction to indexing mechanism for UTRAN frequencies" (R99)	Nokia	Revised

Tdoc	Title	Source	Status
GP-021904	CR 04.18-A253 rev 2 Correction to indexing mechanism for UTRAN frequencies (R99)	Nokia	Approved
GP-021472	CR 04.18-A255 Wrong choice bits (0   1) instead of L   H in IAR Rest Octets (R99)	Siemens	Rejected
GP-021574	CR 04.18-A256 Removal of UTRAN Frequency List (R99)	Ericsson	Revised
GP-021910	CR 04.18-A256 rev 1 Removal of UTRAN Frequency List (R99)	Ericsson	Revised
GP-022003	CR 04.18-A256 rev 2: Removal of UTRAN Frequency List (R99)	Ericsson	Revised
GP-022060	CR 04.18-A256 rev 3 Removal of UTRAN Frequency List (R99)	Ericsson	Approved
GP-021603	CR 04.18-A257 Removal of CBQ2 (R99)	Siemens	Revised
GP-021896	CR 04.18-A257 rev 1 Removal of CBQ2 (R99)	Siemens	Revised
GP-021894	CR 04.18-A257 rev 1 Removal of CBQ2 (R99)	Siemens	Revised
GP-022043	CR 04.18-A257 rev 2 Removal of CBQ2 (R99)	Siemens	Approved
GP-021597	CR 04.18-A258 Usage of CBQ2 (R99)	Siemens	Withdrawn
GP-022402	CR 04.18-A259 Correction to DTM Failure Cases (R99)	Vodafone	Approved
GP-022405	CR 04.18-A260 Correction to abnormal cases of establishment of TBFs whilst in dedicated mode (R99)	Vodafone, Ericsson	Revised
GP-022580	CR 04.18-A260 rev 1 Correction to abnormal cases of establishment of TBFs whilst in dedicated mode (R99)	Vodafone, Ericsson	Approved
GP-022361	CR 04.18-A261 MS behaviour in case of a failed authentication of the network (R99)	Siemens	Revised
GP-022575	CR 04.18-A261 rev 1 MS behaviour in case of a failed authentication of the network (R99)	Siemens	Approved
GP-022379	CR 04.18-A262 Removal of inter cell handover on dedicated resources for TBF (R99)	Mitsubishi	Withdrawn
GP-022385	CR 04.18-A263 PDCH assignment failure on dedicated channels (R99)	Mitsubishi	Withdrawn
GP-022390	CR 04.18-A264 Correction of dedicated resources establishment for TBF (R99)	Mitsubishi	Withdrawn
GP-022395	CR 04.18-A265 Correction of T3134 value (R99)	Mitsubishi	Withdrawn
GP-022464	CR 04.18-A266 Setting of RAI in Suspend (R99)	Siemens	Rejected
GP-022571	CR 04.18-A267 Consistent behaviour in an EGPRS cell in case of uplink signalling causing downlink user data transfer (R99)	Alcatel	Revised
GP-022782	CR 04.18-A267 rev 1 Consistent behaviour in an EGPRS cell in case of uplink signalling causing downlink user data transfer (R99)	Alcatel	Revised
GP-022825	CR 04.18-A267 rev 2 Consistent behaviour in an EGPRS cell in case of uplink signalling causing downlink user data transfer (R99)	Alcatel	Approved*
GP-022577	CR 04.18-A268 Missing description of System Information 2ter message encoding (R99)	Alcatel	Revised
GP-022669	CR 04.18-A268 rev 1 Missing description of System Information 2ter message encoding (R99)	Alcatel	Revised
GP-022792	CR 04.18-A268 rev 2 Missing description of System Information 2ter message encoding (R99)	Alcatel	Rejected
GP-022525	CR 04.18-A269 Corrections to one and two phase packet access via dedicated channel (R99)	Mitsubishi	Withdrawn
GP-022459	CR 04.18-Axxx Corrections to one and two phase packet access via dedicated channel (R99) – WITHDRAWN	Mitsubishi	Withdrawn
GP-021538	CR 04.31-A066 rev 1 Correction of Reference Frame Number in E-OTD Measurement Information Element (R98)	Motorola	Rejected
GP-021539	CR 04.31-A067 rev 1 Correction of Reference Frame Number in E-OTD Measurement Information Element (R99)	Motorola	Rejected
GP-021697	CR 04.31-A074 rev 3 Correction of syntax faults in the ASN.1 (R98)	Ericsson	Revised
GP-021983	CR 04.31-A074 rev 4 Correction of syntax faults in the ASN.1 (R98)	Ericsson	Revised
GP-022082	CR 04.31-A074 rev 5 Correction of syntax faults in the ASN.1 (R98)	Ericsson	Revised
GP-022107	CR 04.31-A074 rev 6 Correction of syntax faults in the ASN.1 (R98)	Ericsson	Approved
GP-021698	CR 04.31-A075 rev 3 Correction of syntax faults in the ASN.1 (R99)	Ericsson	Revised
GP-021984	CR 04.31-A075 rev 4 Correction of syntax faults in the ASN.1 (R99)	Ericsson	Revised
GP-022083	CR 04.31-A075 rev 5 Correction of syntax faults in the ASN.1 (R99)	Ericsson	Revised
GP-022108	CR 04.31-A075 rev 6 Correction of syntax faults in the ASN.1 (R99)	Ericsson	Approved
GP-021348	CR 04.31-A080 ASN.1 Faults in GPS Assistance Data (R98)	Qualcomm	Approved

Tdoc	Title	Source	Status
GP-021349	CR 04.31-A081 ASN.1 Faults in GPS Assistance Data (R99)	Qualcomm	Approved
GP-021352	CR 04.31-A082 ASN.1 Faults in GPS Measurement Parameters (R98)	Qualcomm	Approved
GP-021353	CR 04.31-A083 ASN.1 Faults in GPS Measurement Parameters (R99)	Qualcomm	Approved
GP-021510	CR 04.31-A084 Clean up of downlink segmentation concept (R98)	Siemens	Rejected
GP-021511	CR 04.31-A085 Clean up of downlink segmentation concept (R99)	Siemens	Rejected
GP-022199	CR 04.31-A086 Correction of Pseudo Range Correction range (R98)	Siemens	Rejected
GP-022200	CR 04.31-A087 Correction of Pseudo Range Correction range (R99)	Siemens	Rejected
GP-021550	CR 04.60-B089 rev 1 Correction to indexing mechanism for UTRAN frequencies" (R99)	Nokia	Approved
GP-021678	CR 04.60-B092 Correction to PMO procedure initiated in Packet Idle Mode (R99)	Alcatel	Approved
GP-021426	CR 04.60-B094 Correction on Invalid BSIC reporting (R99)	Nokia	Rejected
GP-021580	CR 04.60-B095 EGPRS ACK/NACK uncompressed bitmap encoding (R99)	Siemens	Rejected
GP-021583	CR 04.60-B096 Reaction on polls during contention resolution at one phase access in EGPRS TBF mode (R99)	Siemens	Approved
GP-021586	CR 04.60-B097 Reaction to polls inside incompletely received RLC data blocks (R99)	Siemens	Rejected
GP-021587	CR 04.60-B098 Pre-emptive transmission handling (R99)	Siemens	Rejected
GP-021471	CR 04.60-B099 Missing default value of CBQ2 for serving cell in PSI3 message (R99)	Siemens	Withdrawn
GP-021461	CR 04.60-B100 Inconsistent definition of TFI/TLLI use in repeated PRR message (R99)	Siemens	Revised
GP-021994	CR 04.60-B100 rev 1 Inconsistent definition of TFI/TLLI use in repeated PRR message (R99)	Siemens	Approved
GP-021464	CR 04.60-B101 Multiband_Reporting and Serving_Band_Reporting in PSI5 message (R99)	Siemens	Rejected
GP-021467	CR 04.60-B102 Requested access technology types for GSM900 (R99)	Siemens	Rejected
GP-021507	CR 04.60-B103 Enhanced Measurement Reporting introduced as a mandatory feature in PCCO message (R99)	Ericsson	Withdrawn
GP-021553	CR 04.60-B104 Alignment of 04.60 and 05.08 regarding the GPRS 3G Cell Reselection list (R99)	Nokia	Revised
GP-021907	CR 04.60-B104 rev 1 Alignment of 04.60 and 05.08 regarding the GPRS 3G Cell Reselection list (R99)	Nokia	Revised
GP-022089	CR 04.60-B104 rev 2 Alignment of 04.60 and 05.08 regarding the GPRS 3G Cell Reselection list (R99)	Nokia	Postponed
GP-021571	CR 04.60-B105 Removal of UTRAN Frequency List (R99)	Ericsson	Revised
GP-021913	CR 04.60-B105 rev 1 Removal of UTRAN Frequency List (R99)	Ericsson	Revised
GP-022006	CR 04.60-B105 rev 2 Removal of UTRAN Frequency List (R99)	Ericsson	Revised
GP-022078	CR 04.60-B105 rev 3 Removal of UTRAN Frequency List (R99)	Ericsson	Approved
GP-021600	CR 04.60-B106 Removal of CBQ2 (R99)	Siemens	Revised
GP-021891	CR 04.60-B106 rev 1 Removal of CBQ2 (R99)	Siemens	Revised
GP-022040	CR 04.60-B106 rev 2 Removal of CBQ2 (R99)	Siemens	Approved
GP-021594	CR 04.60-B107 Usage of CBQ2 (R99)	Siemens	Withdrawn
GP-021621	CR 04.60-B108 Update of BS_CV_MAX (R99)	Nokia	Rejected
GP-021671	CR 04.60-B109 Inconsistency in MS RA capabilities retransmission procedure (R99)	Mitsubishi	Withdrawn
GP-021828	CR 04.60-B110 Corrections and Clarifications on Enhanced Measurement Parameters(R 99)	Siemens	Withdrawn
GP-022015	CR 04.60-B111 CSN-1 fault in Packet Timeslot Reconfigure (R97)	Ericsson	Approved
GP-022016	CR 04.60-B112 CSN-1 fault in Packet Timeslot Reconfigure (R98)	Ericsson	Approved
GP-022017	CR 04.60-B113 CSN-1 fault in Packet Timeslot Reconfigure (R99)	Ericsson	Approved
GP-021681	CR 04.60-B114 Alignment of the MS behaviour when timer T3168 or T3190 expires (R99)	Alcatel	Rejected
GP-022518	CR 04.60-B115 Segmented retransmission of the final RLC data block (R99)	Nortel	Postponed

Tdoc	Title	Source	Status
GP-022568	CR 04.60-B116 Consistent behaviour in an EGPRS cell in case of uplink signalling causing downlink user data transfer (R99)	Alcatel	Revised
GP-022779	CR 04.60-B116 rev 1 Consistent behaviour in an EGPRS cell in case of uplink signalling causing downlink user data transfer (R99)	Alcatel	Revised
GP-022822	CR 04.60-B116 rev 2 Consistent behaviour in an EGPRS cell in case of uplink signalling causing downlink user data transfer (R99)	Alcatel	Approved*
GP-021514	CR 04.71-A017 Remove ambiguity on encoding of all LLP components (R98)	Siemens	Approved
GP-021515	CR 04.71-A018 Remove ambiguity on encoding of all LLP components (R99)	Siemens	Approved
GP-021543	CR 05.05-A209 Reference sensitivity and interference performance requirements for TCH/AFS and TCH/AHS (R98)	Ericsson, Philips, Nokia	Approved
GP-021544	CR 05.05-A210 Reference sensitivity and interference performance requirements for TCH/AFS and TCH/AHS (R99)	Ericsson, Philips, Nokia	Approved
GP-022028	CR 05.05-A212 AMR AHS7.4 static channel performance correction (R98)	Alcatel	Approved
GP-022029	CR 05.05-A213 AMR AHS7.4 static channel performance correction (R99)	Alcatel	Approved
GP-022539	CR 05.05-A214 Relaxation of AMR-Inband, RATSCCH and SID_UPDATE (R98)	Nokia, Philips, Ericsson	Revised
GP-022642	CR 05.05-A214 rev 1 Relaxation of AMR-Inband, RATSCCH and SID_UPDATE (R98)	Nokia, Philips, Ericsson	Revised
GP-022704	CR 05.05-A214 rev 2 Relaxation of AMR-Inband, RATSCCH and SID_UPDATE (R98)	TSG GERAN	Revised
GP-022817	CR 05.05-A214 rev 3 Relaxation of AMR-Inband, RATSCCH and SID_UPDATE (R98)	Nokia, Philips, Ericsson	Approved
GP-022540	CR 05.05-A215 Relaxation of AMR-Inband, RATSCCH and SID_UPDATE (R99)	Nokia, Philips, Ericsson	Revised
GP-022643	CR 05.05-A215 rev 1 Relaxation of AMR-Inband, RATSCCH and SID_UPDATE (R99)	Nokia, Philips, Ericsson	Revised
GP-022705	CR 05.05-A215 rev 2 Relaxation of AMR-Inband, RATSCCH and SID_UPDATE (R99)	TSG GERAN	Revised
GP-022818	CR 05.05-A215 rev 3 Relaxation of AMR-Inband, RATSCCH and SID_UPDATE (R99)	Nokia, Philips, Ericsson	Approved
GP-021611	CR 05.08-A350 rev 1 Usage of CBQ2 (R99)	Siemens	Withdrawn
GP-021416	CR 05.08-A357 Correction on the applicability of reporting priority (R99)	Nokia	Approved
GP-021420	CR 05.08-A358 EMR in case of signalling only mode (R99)	Nokia	Approved
GP-021423	CR 05.08-A359 Correction to cell reselection time requirement (GSM to UTRAN FDD) (R99)	Nokia	Approved
GP-021429	CR 05.08-A360 Correction on call re-establishment for multimode terminals (R99)	Nokia	Rejected
GP-021479	CR 05.08-A361 Removal of CBQ2 (R99)	Ericsson	Withdrawn
GP-021609	CR 05.08-A362 Removal of CBQ2 (R99)	Siemens	Revised
GP-021922	CR 05.08-A362 rev 1 Removal of CBQ2 (R99)	Siemens	Revised
GP-022067	CR 05.08-A362 rev 2 Removal of CBQ2 (R99)	Siemens	Approved
GP-021788	CR 05.08-A363 Corrections and Clarifications on Enhanced Measurement Parameters(R 99)	Siemens	Rejected
GP-021658	CR 05.08-A364 Correction: validity period of NC_FREQUENCY_LIST (R99)	Motorola	Revised
GP-021926	CR 05.08-A364 rev 1 Correction: validity period of NC_FREQUENCY_LIST (R99)	Motorola	Approved
GP-021759	CR 05.10-A075 Correction to inter system handover interruption times (R99)	Siemens/Samsung	Revised
GP-021929	CR 05.10-A075 rev 1 Correction to inter system handover interruption times (R99)	Siemens/Samsung	Approved
GP-021409	CR 05.14-A007 Update of 05.14 (R97)	Nokia	Revised
GP-021953	CR 05.14-A007 rev 1 Update of 05.14 (R97)	Nokia	Revised
GP-021987	CR 05.14-A007 rev 2 Update of 05.14 (R97)	Nokia	Approved

Tdoc	Title	Source	Status
GP-021410	CR 05.14-A008 Update of 05.14 (R98)	Nokia	Revised
GP-021954	CR 05.14-A008 rev 1 Update of 05.14 (R98)	Nokia	Revised
GP-021988	CR 05.14-A008 rev 2 Update of 05.14 (R98)	Nokia	Revised
GP-022118	CR 05.14-A008 rev 3 Update of 05.14	Nokia	Approved
GP-021692	CR 05.14-A009 Inconsistent values of the Band Indicator (R98)	Siemens	Withdrawn
GP-021693	CR 05.14-A010 Addition of Band Indicator of Packet System Information for GPRS support (R98)	Siemens	Withdrawn
GP-021763	CR 05.14-A011 Inconsistent values of the Band Indicator (R97)	Siemens	Withdrawn
GP-021764	CR 05.14-A012 Addition of Band Indicator of Packet System Information for GPRS support (R97)	Siemens	Withdrawn
GP-021457	CR 08.08-A243 Length of Location Estimate IE in PERFORM LOCATION RESPONSE message (R99)	Nokia	Approved
GP-021452	CR 08.08-A244 Clarification of the Cell Identifier (Serving) IE in HANDOVER REQUEST message in UMTS to GSM handover (R99)	Nokia	Revised
GP-021898	CR 08.08-A244 rev 1 Clarification of the Cell Identifier (Serving) IE in HANDOVER REQUEST message in UMTS to GSM handover (R99)	Nokia	Approved
GP-021455	CR 08.08-A245 Clarification of the RNC-ID coding in Cell Identifier and Cell Identifier List IEs (R99)	Nokia	Revised
GP-021901	CR 08.08-A245 rev 1 Clarification of the RNC-ID coding in Cell Identifier and Cell Identifier List IEs (R99)	Nokia	Approved
GP-021688	CR 08.18-A139 Removal of an inconsistency in LLC DISCARDED description (R99)	Nortel	Revised
GP-021885	CR 08.18-A139 rev 1 Removal of an inconsistency in LLC DISCARDED description (R99)	Nortel Networks	Rejected
GP-022555	CR 08.18-A140 Setting of RAI in Suspend and appropriate handling in SGSN (R99)	Siemens	Rejected
GP-021356	CR 08.31-A008 Correction of Error Indications for SMLCPP (R98)	Siemens	Rejected
GP-021357	CR 08.31-A009 Correction of Error Indications for SMLCPP (R99)	Siemens	Rejected
GP-021484	CR 08.56-A001 Removal of reference to obsolete standard (R99) – WITHDRAWN	MCC	Withdrawn
GP-021359	CR 09.31-A030 Clarify Requested GPS Assistance Data IE (R98)	Siemens	Revised
GP-021919	CR 09.31-A030 rev 1 Clarify Requested GPS Assistance Data IE (R98)	Siemens	Approved
GP-021360	CR 09.31-A031 Clarify Requested GPS Assistance Data IE (R99)	Siemens	Revised
GP-021920	CR 09.31-A031 rev 1 Clarify Requested GPS Assistance Data IE (R99)	Siemens	Approved
GP-022139	CR 09.95-A007 Use of Cause #14 in networks using NMO I (Rel 97)	Motorola	Postponed
GP-022140	CR 09.95-A008 Use of Cause #14 in networks using NMO I (Rel 98)	Motorola	Postponed
GP-021685	CR 11.21-151 AMR AHS7.4 static channel performance correction (R98)	Alcatel	Withdrawn
GP-021686	CR 11.21-152 AMR AHS7.4 static channel performance correction (R99)	Alcatel	Withdrawn
GP-021624	CR 21.905-draft Addition of GERAN definitions and abbreviations (Rel 5)	Siemens	NA
GP-021835	CR 21.905-draft Addition of GERAN definitions and abbreviations (Rel 5)	Siemens	NA
GP-021623	CR 21.905-draft Addition of missing GSM/GPRS abbreviations (Rel 5)	Siemens	NA
GP-021834	CR 21.905-draft Addition of missing GSM/GPRS abbreviations (Rel 5)	Siemens	NA
GP-022366	CR 23.022-xxx MS behaviour in case of a failed authentication of the network (Rel 5) (Withdrawn)	Siemens	Withdrawn
GP-022367	CR 23.022-xxx MS behaviour in case of a failed authentication of the network (Rel 5) (Withdrawn)	Siemens	Withdrawn
GP-021557	CR 24.008-643 GERAN Iu Mode Capability	Nokia	NA
GP-021989	CR 24.008-643 rev 1 GERAN Iu Mode Capability (Rel-5)	Nokia	NA
GP-022087	CR 24.008-643 rev 2 GERAN Iu Mode Capability (Rel-5)	Nokia	NA

Tdoc	Title	Source	Status
GP-022448	CR 24.008-draft Inclusion of EDGE RF Power Capability in the CM3 IE (rel 5)	Siemens	NA
GP-022542	CR 24.008-draft Inclusion of EDGE RF Power Capability in the CM3 IE (rel 5)	Siemens	NA
GP-022548	CR 24.008-xxx Clarification on Bearer capability IE (R99)	Siemens	Withdrawn
GP-021793	CR 24.008-xxx Implementation of TAPS frequency ranges with associated Classmarks into 24.008 (Rel 6)	ETSI Project TETRA	NA
GP-021618	CR 43.022-005 rev 1 Usage of CBQ2 (Rel 4)	Siemens	Withdrawn
GP-021619	CR 43.022-006 rev 1 Usage of CBQ2 (Rel 5)	Siemens	Withdrawn
GP-021605	CR 43.022-007 Removal of CBQ2 (Rel 4)	Siemens	Revised
GP-022063	CR 43.022-007 rev 1 Removal of CBQ2 (Rel 4)	Siemens	Approved
GP-021604	CR 43.022-008 Removal of CBQ2 (Rel 5)	Siemens	Revised
GP-022062	CR 43.022-008 rev 1 Removal of CBQ2 (Rel 5)	Siemens	Approved
GP-021794	CR 43.022-009 Inclusion of TAPS (Rel 6)	ETSI Project TETRA	Revised
GP-022512	CR 43.022-010 MS behaviour in case of a failed authentication of the network (Rel 4)	Siemens	Approved
GP-022513	CR 43.022-011 MS behaviour in case of a failed authentication of the network (Rel 5)	Siemens	Approved
GP-021795	CR 43.030-001 Inclusion of TAPS cell sizes and RF budgets (Rel 6)	ETSI Project TETRA	Rejected
GP-022536	CR 43.030-002 Correction of Mean Effective Gain for GSM 400 (Rel 4)	Siemens	Rejected
GP-022537	CR 43.030-003 Correction of Mean Effective Gain for GSM 400 (Rel 5)	Siemens	Approved
GP-022154	CR 43.051-041 rev 5 MAC multiplexing and scheduling	AT&T Wireless, Siemens	Revised
GP-022665	CR 43.051-041 rev 6 MAC multiplexing and scheduling	AT&T Wireless	Revised
GP-022769	CR 43.051-041 rev 7 MAC multiplexing and scheduling	AT&T Wireless	Revised
GP-022802	CR 43.051-041 rev 8 MAC multiplexing and scheduling	AT&T Wireless	Approved
GP-022155	CR 43.051-049 TBF reallocation	AT&T Wireless	Revised
GP-022655	CR 43.051-049 rev 1 TBF reallocation	AT&T Wireless	Revised
GP-022799	CR 43.051-049 rev 2 TBF reallocation	AT&T Wireless	Approved
GP-021376	CR 43.051-049 TBF reallocation	AT&T Wireless	Postponed
GP-021653	CR 43.051-050 Principles of Iu mode establishment causes (Rel 5)	Siemens	Postponed
GP-022256	CR 43.051-051 Correction ECSD blocks (Rel 5)	Nokia	Withdrawn
GP-021517	CR 43.059-034 Usage of PBCCH and CBCH for LCS Broadcast (Rel 5)	Siemens	Withdrawn
GP-021518	CR 43.059-035 Correction of timing when SMLC enters LOCATION state (Rel 4)	Siemens	Approved
GP-022257	CR 43.930-001 Corrections, clarifications and alignment to Stage 3 CR on Iur-g (Rel 5)	Nokia	Revised
GP-022773	CR 43.930-001 rev 1 Corrections, clarifications and alignment to Stage 3 CR on Iur-g (Rel-5)	Nokia	Revised
GP-022809	CR 43.930-001 rev 2 Corrections, clarifications and alignment to Stage 3 CR on Iur-g (Rel-5)	Nokia	Approved
GP-021696	CR 44.014-003 § 5.4.2.2 - GPRS Test Mode B and RLC Block Loopback - Action on receipt of corrupt block	Anite	Revised
GP-022038	CR 44.014-003 rev 1 § 5.4.2.2 - GPRS Test Mode B and RLC Block Loopback - Action on receipt of corrupt block (Rel-4)	Anite Telecoms	Revised
GP-022050	CR 44.014-003 rev 2 § 5.4.2.2 - GPRS Test Mode B and RLC Block Loopback - Action on receipt of corrupt block (Rel-4)	Anite Telecoms	Approved
GP-021704	CR 44.018-070 rev 5 Alignment of number of codecs for WB-AMR to proposed set (Rel-5)	Ericsson	Approved
GP-021548	CR 44.018-174 rev 1 Correction to indexing mechanism for UTRAN frequencies" (Rel 4)	Nokia	Revised
GP-021905	CR 44.018-174 rev 2 Correction to indexing mechanism for UTRAN frequencies (Rel-4)	Nokia	Approved
GP-021549	CR 44.018-175 rev 1 Correction to indexing mechanism for UTRAN frequencies" (Rel 5)	Nokia	Revised

Tdoc	Title	Source	Status
GP-021906	CR 44.018-175 rev 2 Correction to indexing mechanism for UTRAN frequencies (Rel-5)	Nokia	Approved
GP-021705	CR 44.018-180 rev 1 Alignment of measurement reporting with 44.118 (Rel-5)	Matsushita	Approved
GP-021706	CR 44.018-181 rev 1 Description of SI13alt (Rel-5)	Nokia	Approved
GP-021707	CR 44.018-182 rev 2 Intermoder handover to GERAN Iu mode procedure (Rel-5)	AWS, Nokia, Panasonic, Siemens, Vodafone	Revised
GP-021992	CR 44.018-182 rev 3 Intermoder handover to GERAN Iu mode procedure (Rel-5)	AWS, Nokia, Panasonic, Siemens, Vodafone	Approved
GP-021470	CR 44.018-183 Wrong choice bits (0   1) instead of L   H in IAR Rest Octets (Rel 4)	Siemens	Rejected
GP-021469	CR 44.018-184 Wrong choice bits (0   1) instead of L   H in IAR Rest Octets (Rel 5)	Siemens	Rejected
GP-021573	CR 44.018-186 Removal of UTRAN Frequency List (Rel 4)	Ericsson	Revised
GP-021911	CR 44.018-186 rev 1 Removal of UTRAN Frequency List (Rel-4)	Ericsson	Revised
GP-022004	CR 44.018-186 rev 2 Removal of UTRAN Frequency List (Rel-4)	Ericsson	Revised
GP-022076	CR 44.018-186 rev 3 Removal of UTRAN Frequency List (Rel-4)	Ericsson	Approved
GP-021572	CR 44.018-187 Removal of UTRAN Frequency List (Rel 5)	Ericsson	Revised
GP-021912	CR 44.018-187 rev 1 Removal of UTRAN Frequency List (Rel-5)	Ericsson	Revised
GP-022005	CR 44.018-187 rev 2 Removal of UTRAN Frequency List (Rel-5)	Ericsson	Revised
GP-022077	CR 44.018-187 rev 3 Removal of UTRAN Frequency List (Rel-5)	Ericsson	Approved
GP-021591	CR 44.018-188 Removal of TBF establishment via dedicated mode and related procedures (Rel 5)	Siemens	Revised
GP-021765	CR 44.018-188 rev 1 Removal of TBF establishment via dedicated mode and related procedures (Rel 5)	Siemens	Rejected
GP-022358	CR 44.018-188 rev 2 Removal of TBF establishment via dedicated mode and related procedures (Rel 5)	Siemens	Revised
GP-022775	CR 44.018-188 rev 3 Removal of TBF establishment via dedicated mode and related procedures (Rel-5)	Siemens	Approved
GP-021602	CR 44.018-189 Removal of CBQ2 (Rel 4)	Siemens	Revised
GP-021895	CR 44.018-189 rev 1 Removal of CBQ2 (Rel-4)	Siemens	Revised
GP-022044	CR 44.018-189 rev 2 Removal of CBQ2 (Rel-4)	Siemens	Approved
GP-021601	CR 44.018-190 Removal of CBQ2 (Rel 5)	Siemens	Revised
GP-021896	CR 44.018-190 rev 1 Removal of CBQ2 (Rel-5)	Siemens	Revised
GP-022045	CR 44.018-190 rev 2 Removal of CBQ2 (Rel-5)	Siemens	Approved
GP-021596	CR 44.018-191 Usage of CBQ2 (Rel 4)	Siemens	Withdrawn
GP-021595	CR 44.018-192 Usage of CBQ2 (Rel 5)	Siemens	Withdrawn
GP-021628	CR 44.018-193 Introduction of SDCCH/6 (Rel 5)	Siemens	Withdrawn
GP-021826	CR 44.018-194 Corrections and Clarifications on Enhanced Measurement Parameters(Rel 4)	Siemens	Withdrawn
GP-021827	CR 44.018-195 Corrections and Clarifications on Enhanced Measurement Parameters(Rel 5)	Siemens	Withdrawn
GP-022235	CR 44.018-196 Addition of GERAN IU MODE CLASSMARK CHANGE message (Rel 5)	Nokia	Revised
GP-022591	CR 44.018-196 rev 1 Addition of GERAN IU MODE CLASSMARK CHANGE message (Rel-5)	Nokia	Revised
GP-022785	CR 44.018-196 rev 2 Addition of GERAN IU MODE CLASSMARK CHANGE message (Rel-5)	Nokia	Approved
GP-022403	CR 44.018-198 Correction to DTM Failure Cases (Rel 4)	Vodafone	Approved
GP-022404	CR 44.018-199 Correction to DTM Failure Cases (Rel 5)	Vodafone	Approved
GP-022406	CR 44.018-200 Correction to abnormal cases of establishment of TBFs whilst in dedicated mode (Rel 4)	Vodafone, Ericsson	Revised
GP-022581	CR 44.018-200 rev 1 Correction to abnormal cases of establishment of TBFs whilst in dedicated mode (Rel-4)	Vodafone, Ericsson	Approved
GP-022407	CR 44.018-201 Correction to abnormal cases of establishment of TBFs whilst in dedicated mode (Rel 5)	Vodafone, Ericsson	Revised



Tdoc	Title	Source	Status
GP-022582	CR 44.018-201 rev 1 Correction to abnormal cases of establishment of TBFs whilst in dedicated mode (Rel-5)	Vodafone, Ericsson	Approved
GP-022322	CR 44.018-202 Correction of SI 2quater Rest Octes IE (Rel 4)	Ericsson	Revised
GP-022576	CR 44.018-202 rev 1 Correction of SI 2quater Rest Octes IE (corresponding to earlier changes in R99) (Rel-4)	Ericsson	Approved
GP-022323	CR 44.018-203 Correction of SI 2quater Rest Octes IE (Rel 5)	Ericsson	Approved
GP-022359	CR 44.018-204 Clarification of the CN release indicators (Rel 5)	Siemens	Approved
GP-022362	CR 44.018-205 MS behaviour in case of a failed authentication of the network (Rel 4)	Siemens	Approved
GP-022363	CR 44.018-206 MS behaviour in case of a failed authentication of the network (Rel 5)	Siemens	Approved
GP-022418	CR 44.018-207 Introduction of SDCCH/6 (Rel 5)	Siemens	Withdrawn
GP-022380	CR 44.018-208 Removal of inter cell handover on dedicated resources for TBF (Rel 4)	Mitsubishi	Withdrawn
GP-022381	CR 44.018-209 Removal of inter cell handover on dedicated resources for TBF (Rel 5)	Mitsubishi	Withdrawn
GP-022386	CR 44.018-210 PDCH assignment failure on dedicated channels (Rel 4)	Mitsubishi	Withdrawn
GP-022387	CR 44.018-211 PDCH assignment failure on dedicated channels (Rel 5)	Mitsubishi	Withdrawn
GP-022391	CR 44.018-212 Correction of dedicated resources establishment for TBF (Rel 4)	Mitsubishi	Withdrawn
GP-022392	CR 44.018-213 Correction of dedicated resources CR establishment for TBF (Rel 5)	Mitsubishi	Withdrawn
GP-022396	CR 44.018-214 Correction of T3134 value (Rel 4)	Mitsubishi	Withdrawn
GP-022397	CR 44.018-215 Correction of T3134 value (Rel 5)	Mitsubishi	Withdrawn
GP-022465	CR 44.018-216 Setting of RAI in Suspend (Rel 4)	Siemens	Rejected
GP-022498	CR 44.018-217 Setting of RAI in Suspend (Rel 5)	Siemens	
GP-022583	CR 44.018-217 rev 1 Setting of RAI in Suspend (Rel-5)	Siemens	Revised
GP-022777	CR 44.018-217 rev 2 Setting of RAI in Suspend (Rel-5)	Siemens	Approved
GP-022504	CR 44.018-218 Consistent behaviour in an EGPRS cell in case of uplink signalling causing downlink user data transfer (6)	Alcatel	Withdrawn
GP-022572	CR 44.018-219 Consistent behaviour in an EGPRS cell in case of uplink signalling causing downlink user data transfer (Rel-4)	Alcatel	Revised
GP-022783	CR 44.018-219 rev 1 Consistent behaviour in an EGPRS cell in case of uplink signalling causing downlink user data transfer (Rel-4)	Alcatel	Revised
GP-022826	CR 44.018-219 rev 2 Consistent behaviour in an EGPRS cell in case of uplink signalling causing downlink user data transfer (Rel-4)	Alcatel	Approved*
GP-022573	CR 44.018-220 Consistent behaviour in an EGPRS cell in case of uplink signalling causing downlink user data transfer (Rel-5)	Alcatel	Revised
GP-022784	CR 44.018-220 rev 1 Consistent behaviour in an EGPRS cell in case of uplink signalling causing downlink user data transfer (Rel-5)	Alcatel	Revised
GP-022827	CR 44.018-220 rev 2 Consistent behaviour in an EGPRS cell in case of uplink signalling causing downlink user data transfer (Rel-5)	Alcatel	Approved*
GP-022578	CR 44.018-221 Missing description of System Information 2ter message encoding (Rel-4)	Alcatel	Revised
GP-022670	CR 44.018-221 rev 1 Missing description of System Information 2ter message encoding (Rel-4)	Alcatel	Revised
GP-022793	CR 44.018-221 rev 2 Missing description of System Information 2ter message encoding (Rel-4)	Alcatel	Rejected
GP-022579	CR 44.018-222 Missing description of System Information 2ter message encoding (Rel-5)	Alcatel	Revised
GP-022671	CR 44.018-222 rev 1 Missing description of System Information 2ter message encoding (Rel-5)	Alcatel	Revised
GP-022794	CR 44.018-222 rev 2 Missing description of System Information 2ter message encoding (Rel-5)	Alcatel	Approved
GP-022526	CR 44.018-223 Corrections to one and two phase packet access via dedicated channel (Rel 4)	Mitsubishi	Withdrawn

Tdoc	Title	Source	Status
GP-022527	CR 44.018-224 Corrections to one and two phase packet access via dedicated channel (Rel 5)	Mitsubishi	Withdrawn
GP-022460	CR 44.018-xxx Corrections to one and two phase packet access via dedicated channel (Rel 4) - WITHDRAWN	Mitsubishi	Withdrawn
GP-022461	CR 44.018-xxx Corrections to one and two phase packet access via dedicated channel (Rel 5) - WITHDRAWN	Mitsubishi	Withdrawn
GP-021541	CR 44.031-034 rev 1 Correction of Reference Frame Number in E-OTD Measurement Information Element (Rel 5)	Motorola	Rejected
GP-021540	CR 44.031-036 rev 1 Correction of Reference Frame Number in E-OTD Measurement Information Element (Rel 4)	Motorola	Rejected
GP-021699	CR 44.031-054 rev 3 Correction of syntax faults in the ASN.1 (Rel 4)	Ericsson	Revised
GP-021985	CR 44.031-054 rev 4 Correction of syntax faults in the ASN.1 (Rel-4)	Ericsson	Revised
GP-022084	CR 44.031-054 rev 5 Correction of syntax faults in the ASN.1 (Rel-4)	Ericsson	Revised
GP-022109	CR 44.031-054 rev 6 Correction of syntax faults in the ASN.1 (Rel-4)	Ericsson	Approved
GP-021700	CR 44.031-055 rev 3 Correction of syntax faults in the ASN.1 (Rel 5)	Ericsson	Revised
GP-021986	CR 44.031-055 rev 4 Correction of syntax faults in the ASN.1 (Rel-5)	Ericsson	Revised
GP-022085	CR 44.031-055 rev 5 Correction of syntax faults in the ASN.1 (Rel-5)	Ericsson	Revised
GP-022110	CR 44.031-055 rev 6 Correction of syntax faults in the ASN.1 (Rel-5)	Ericsson	Approved
GP-021708	CR 44.031-060 Correction to Extended Reference IE section (Rel-5)	Siemens	Approved
GP-021350	CR 44.031-061 ASN.1 Faults in GPS Assistance Data (Rel 4)	Qualcomm	Approved
GP-021351	CR 44.031-062 ASN.1 Faults in GPS Assistance Data (Rel 5)	Qualcomm	Approved
GP-021354	CR 44.031-063 ASN.1 Faults in GPS Measurement Parameters (Rel 4)	Qualcomm	Approved
GP-021355	CR 44.031-064 ASN.1 Faults in GPS Measurement Parameters (Rel 5)	Qualcomm	Approved
GP-021512	CR 44.031-065 Clean up of downlink segmentation concept (Rel-4)	Siemens	Rejected
GP-021513	CR 44.031-066 Clean up of downlink segmentation concept (Rel 5)	Siemens	Revised
GP-021917	CR 44.031-066 rev 1 Clean up of downlink segmentation concept (Rel 5)	Siemens	Approved
GP-022201	CR 44.031-067 Correction of Pseudo Range Correction range (Rel 4)	Siemens	Rejected
GP-022202	CR 44.031-068 Correction of Pseudo Range Correction range (Rel 5)	Siemens	Revised
GP-022600	CR 44.031-068 rev 1 Correction of Pseudo Range Correction range (Rel-5)	Siemens	Approved
GP-022203	CR 44.031-069 Corrections to GPS Assistance Data Element (Rel 5)	Siemens	Revised
GP-022647	CR 44.031-069 rev 1 Corrections to GPS Assistance Data Element (Rel-5)	Siemens	Approved
GP-021709	CR 44.060-122 rev 4 Iu-mode (single TBF) Packet Resource Request & Downlink Ack/Nack (Rel-5)	RLC/MAC Iu mode drafting session	Approved
GP-021710	CR 44.060-123 rev 4 Iu-mode (single TBF) Packet Timeslot Reconfigure (Rel-5)	RLC/MAC Iu mode drafting session	Approved
GP-021711	CR 44.060-159 rev 2 Multiple TBF Downlink Assignment (Rel-5)	RLC/MAC Iu mode drafting session	Approved
GP-021712	CR 44.060-160 rev 4 Multiple TBF Uplink Assignment (Rel-5)	RLC/MAC Iu mode drafting session	Approved
GP-021713	CR 44.060-162 rev 4 Multiple TBF Timeslot Reconfigure (Rel-5)	RLC/MAC Iu mode drafting session	Approved
GP-021714	CR 44.060-167 rev 1 Packet Control Acknowledgement (Rel-5)	RLC/MAC Iu mode drafting session	Approved
GP-021715	CR 44.060-168 rev 3 Packet DBPSCH Assignment (Rel-5)	RLC/MAC Iu mode drafting session	Approved
GP-021324	CR 44.060-170 rev 1 LCS Broadcast Assistance Data in a New PSI Message (Rel 5)	Nokia	Withdrawn

Tdoc	Title	Source	Status
GP-021551	CR 44.060-177 rev 1 Correction to indexing mechanism for UTRAN frequencies" (Rel 4)	Nokia	Approved
GP-021552	CR 44.060-178 rev 1 Correction to indexing mechanism for UTRAN frequencies" (Rel 5)	Nokia	Approved
GP-021679	CR 44.060-184 Correction to PMO procedure initiated in Packet Idle Mode (Rel 4)	Alcatel	Approved
GP-021680	CR 44.060-185 Correction to PMO procedure initiated in Packet Idle Mode (Rel 5)	Alcatel	Approved
GP-021716	CR 44.060-189 rev 2 Contention resolution in GERAN Iu mode (Rel-5)	RLC/MAC Iu mode drafting session	Approved
GP-021717	CR 44.060-191 rev 2 Coding of Iu mode paging struct in PACKET PAGING REQUEST message (Rel-5)	RLC/MAC Iu mode drafting session	Revised
GP-021753	CR 44.060-191 rev 3 Coding of Iu mode paging struct in PACKET PAGING REQUEST message	Siemens	Postponed
GP-022348	CR 44.060-191 rev 3 Coding of Iu mode paging struct in PACKET PAGING REQUEST message (Rel 5)	Siemens	Revised
GP-022664	CR 44.060-191 rev 4 Coding of Iu mode paging struct in PACKET PAGING REQUEST message (Rel-5)	Siemens	Approved
GP-021718	CR 44.060-192 Changes to 7.1.3 and 7.1.2.3a due to Iu (Rel-5)	RLC/MAC Iu mode drafting session	Approved
GP-021719	CR 44.060-193 rev 2 Iu mode message types (Rel-5)	Siemens	Approved
GP-021494	CR 44.060-194 Delayed downlink TBF release for R5 (Rel 5)	Siemens	Revised
GP-021991	CR 44.060-194 rev 1 Delayed downlink TBF release for R5 (Rel-5)	Siemens	Postponed
GP-022217	CR 44.060-194 rev 2 Delayed downlink TBF release for R5 (Iu mode) (Rel 5)	Siemens	Revised
GP-022656	CR 44.060-194 rev 3 Delayed downlink TBF release for R5 (Iu mode) (Rel-5)	Siemens	Approved
GP-021720	CR 44.060-195 rev 1 Introduction of G-RNTI into RLC/MAC (Rel-5)	Siemens	Approved
GP-021439	CR 44.060-196 rev 1 Update of BS_CV_MAX (Rel 5)	Nokia	Rejected
GP-021721	CR 44.060-197 Introduction of SFACCH - Clarification ME bits combination (Rel 5)	Nokia	Approved
GP-021441	CR 44.060-198 Changes to section 10 due to Iu mode (Rel 5)	Nokia	Postponed
GP-022250	CR 44.060-198 rev 1 Changes to section 10 due to Iu mode (Rel 5) (Postponed from GERAN#10)	Nokia	Revised
GP-022657	CR 44.060-198 rev 2 Changes to section 10 due to Iu mode (Rel-5)	Nokia	Approved
GP-021556	CR 44.060-199 Broadcast Information of Iu mode on PBCCH (Rel 5)	Nokia	Postponed
GP-022252	CR 44.060-199 rev 2 Broadcast Information of Iu Mode on PBCCH (Rel 5)	Nokia	Revised
GP-022659	CR 44.060-199 rev 3 Broadcast Information of Iu Mode on PBCCH (Rel-5)	Nokia	Revised
GP-022800	CR 44.060-199 rev 4 Broadcast Information of Iu Mode on PBCCH (Rel-5)	Nokia	Approved
GP-021656	CR 44.060-200 Packet Downlink Assignment message for Iu mode (Rel 5)	Siemens	Postponed
GP-022274	CR 44.060-200 rev 1 PACKET DOWNLINK ASSIGNMENT message in Iu mode (Rel 5)	Siemens	Revised
GP-022663	CR 44.060-200 rev 2 PACKET DOWNLINK ASSIGNMENT message in Iu mode (Rel-5)	Siemens	Approved
GP-021427	CR 44.060-201 Correction on Invalid BSIC reporting (Rel 4)	Nokia	Rejected
GP-021428	CR 44.060-202 Correction on Invalid BSIC reporting (Rel 5)	Nokia	Revised
GP-022086	CR 44.060-202 rev 1 Correction on Invalid BSIC reporting (Rel-5)	Nokia	Postponed
GP-021579	CR 44.060-203 EGPRS ACK/NACK uncompressed bitmap encoding (Rel 4)	Siemens	Rejected
GP-021578	CR 44.060-204 EGPRS ACK/NACK uncompressed bitmap encoding (Rel 5)	Siemens	Postponed
GP-021582	CR 44.060-205 Reaction on polls during contention resolution at one phase access in EGPRS TBF mode (Rel 4)	Siemens	Approved

Tdoc	Title	Source	Status
GP-021581	CR 44.060-206 Reaction on polls during contention resolution at one phase access in EGPRS TBF mode (Rel 5)	Siemens	Approved
GP-021585	CR 44.060-207 Reaction to polls inside incompletely received RLC data blocks (Rel 4)	Siemens	Rejected
GP-021584	CR 44.060-208 Reaction to polls inside incompletely received RLC data blocks (Rel 5)	Siemens	Revised
GP-021889	CR 44.060-208 rev 1 Reaction to polls inside incompletely received RLC data blocks (Rel 5)	Siemens	Approved
GP-021588	CR 44.060-209 Pre-emptive transmission handling (Rel 4)	Siemens	Rejected
GP-021589	CR 44.060-210 Pre-emptive transmission handling (Rel 5)	Siemens	Revised
GP-021890	CR 44.060-210 rev 1 Pre-emptive transmission handling (Rel-5)	Siemens	Revised
GP-022057	CR 44.060-210 rev 2 Pre-emptive transmission handling (Rel-5)	Siemens	Approved
GP-021459	CR 44.060-211 Missing default value of CBQ2 for serving cell in PSI3 message (Rel 4)	Siemens	Withdrawn
GP-021460	CR 44.060-212 Missing default value of CBQ2 for serving cell in PSI3 message (Rel 5)	Siemens	Withdrawn
GP-021462	CR 44.060-213 Inconsistent definition of TFI/TLLI use in repeated PRR message (Rel 4)	Siemens	Revised
GP-021995	CR 44.060-213 rev 1 Inconsistent definition of TFI/TLLI use in repeated PRR message (Rel-4)	Siemens	Revised
GP-022052	CR 44.060-213 rev 2 Inconsistent definition of TFI/TLLI use in repeated PRR message (Rel-4)	Siemens	Approved
GP-021463	CR 44.060-214 Inconsistent definition of TFI/TLLI use in repeated PRR message (Rel 5)	Siemens	Revised
GP-021996	CR 44.060-214 rev 1 Inconsistent definition of TFI/TLLI use in repeated PRR message (Rel-5)	Siemens	Revised
GP-022053	CR 44.060-214 rev 2 Inconsistent definition of TFI/TLLI use in repeated PRR message (Rel-5)	Siemens	Approved
GP-021465	CR 44.060-215 Multiband_Reporting and Serving_Band_Reporting in PSI5 message (Rel 4)	Siemens	Rejected
GP-021466	CR 44.060-216 Multiband_Reporting and Serving_Band_Reporting in PSI5 message (Rel 5)	Siemens	Revised
GP-022001	CR 44.060-216 rev 1 Multiband_Reporting and Serving_Band_Reporting in PSI5 message (Rel-5)	Siemens	Revised
GP-022055	CR 44.060-216 rev 2 Multiband_Reporting and Serving_Band_Reporting in PSI5 message (Rel-5)	Siemens	Approved
GP-021468	CR 44.060-217 Requested access technology types for GSM900 (Rel 4)	Siemens	Rejected
GP-021458	CR 44.060-218 Requested access technology types for GSM900 (Rel 5)	Siemens	Revised
GP-021888	CR 44.060-218 rev 1 Requested access technology types for GSM900 (Rel-5)	Siemens	Revised
GP-022056	CR 44.060-218 rev 2 Requested access technology types for GSM900 (Rel-5)	Siemens	Approved
GP-021506	CR 44.060-219 Enhanced Measurement Reporting introduced as a mandatory feature in PCCO message (Rel 4)	Ericsson	Withdrawn
GP-021504	CR 44.060-220 Minor corrections to 44.060 (Rel 4)	Ericsson	Approved
GP-021505	CR 44.060-221 Enhanced Measurement Reporting introduced as a mandatory feature in PCCO message (Rel 5)	Ericsson	Withdrawn
GP-021503	CR 44.060-222 Minor corrections to 44.060 (Rel 5)	Ericsson	Approved
GP-021554	CR 44.060-223 Alignment of 04.60 and 05.08 regarding the GPRS 3G Cell Reselection list (Rel 4)	Nokia	Revised
GP-021908	CR 44.060-223 rev 1 Alignment of 04.60 and 05.08 regarding the GPRS 3G Cell Reselection list (Rel-4)	Nokia	Revised
GP-022090	CR 44.060-223 rev 2 Alignment of 04.60 and 05.08 regarding the GPRS 3G Cell Reselection list (Rel-4)	Nokia	Postponed
GP-021555	CR 44.060-224 Alignment of 04.60 and 05.08 regarding the GPRS 3G Cell Reselection list (Rel 5)	Nokia	Revised

Tdoc	Title	Source	Status
GP-021909	CR 44.060-224 rev 1 Alignment of 04.60 and 05.08 regarding the GPRS 3G Cell Reselection list (Rel-5)	Nokia	Revised
GP-022095	CR 44.060-224 rev 2 Alignment of 04.60 and 05.08 regarding the GPRS 3G Cell Reselection list (Rel-5)	Nokia	Postponed
GP-021566	CR 44.060-225 Clarification of Measurement Reporting and Cell Reselection Procedures (Rel 5)	Nokia	Revised
GP-021997	CR 44.060-225 rev 1 Clarification of Measurement Reporting and Cell Reselection Procedures (Rel-5)	Nokia	Postponed
GP-022253	CR 44.060-225 rev 2 Clarification of measurement reporting and cell reselection procedures	Nokia	Approved
GP-021575	CR 44.060-226 CSN-1 fault in Packet Timeslot Reconfigure (Rel 5)	Ericsson	Revised
GP-022019	CR 44.060-226 rev 1 CSN-1 fault in Packet Timeslot Reconfigure (Rel-5)	Ericsson	Approved
GP-021570	CR 44.060-227 Removal of UTRAN Frequency List (Rel 4)	Ericsson	Revised
GP-021914	CR 44.060-227 rev 1 Removal of UTRAN Frequency List (Rel-4)	Ericsson	Revised
GP-022007	CR 44.060-227 rev 2 Removal of UTRAN Frequency List (Rel-4)	Ericsson	Revised
GP-022079	CR 44.060-227 rev 3 Removal of UTRAN Frequency List (Rel-4)	Ericsson	Approved
GP-021569	CR 44.060-228 Removal of UTRAN Frequency List (Rel 5)	Ericsson	Revised
GP-021915	CR 44.060-228 rev 1 Removal of UTRAN Frequency List (Rel-5)	Ericsson	Revised
GP-022008	CR 44.060-228 rev 2 Removal of UTRAN Frequency List (Rel-5)	Ericsson	Revised
GP-022080	CR 44.060-228 rev 3 Removal of UTRAN Frequency List (Rel-5)	Ericsson	Approved
GP-021599	CR 44.060-229 Removal of CBQ2 (Rel 4)	Siemens	Revised
GP-021892	CR 44.060-229 rev 1 Removal of CBQ2 (Rel-4)	Siemens	Revised
GP-022041	CR 44.060-229 rev 2 Removal of CBQ2 (Rel-4)	Siemens	Approved
GP-021598	CR 44.060-230 Removal of CBQ2 (Rel 5)	Siemens	Revised
GP-021893	CR 44.060-230 rev 1 Removal of CBQ2 (Rel-5)	Siemens	Revised
GP-022042	CR 44.060-230 rev 2 Removal of CBQ2 (Rel-5)	Siemens	Approved
GP-021593	CR 44.060-231 Usage of CBQ2 (Rel 4)	Siemens	Withdrawn
GP-021592	CR 44.060-232 Usage of CBQ2 (Rel 5)	Siemens	Withdrawn
GP-021622	CR 44.060-233 Update of BS_CV_MAX (Rel 4)	Nokia	Rejected
GP-021499	CR 44.060-234 Clarification of polling response procedure during downlink TBF establishment on PCCCH (Rel 5)	Mitsubishi	Revised
GP-022032	CR 44.060-234 rev 1 Clarification of polling response procedure during downlink TBF establishment on PCCCH (Rel-5)	Mitsubishi	Revised
GP-022101	CR 44.060-234 rev 2 Clarification of polling response procedure during downlink TBF establishment on PCCCH (Rel-5)	Mitsubishi	Approved
GP-021500	CR 44.060-235 Improving reliability of reallocation procedures (Rel 5)	Mitsubishi	Revised
GP-022033	CR 44.060-235 rev 1 Improving reliability of reallocation procedures (Rel-5)	Mitsubishi	Postponed
GP-022400	CR 44.060-235 rev 2 Improving reliability of reallocation procedures (Rel 5)	Mitsubishi, Matsushita	Postponed
GP-021501	CR 44.060-236 Clarification on T3190 management (Rel 5)	Mitsubishi	Postponed
GP-022401	CR 44.060-236 rev 1 Clarification on T3190 management (rel 5)	Mitsubishi	Revised
GP-022649	CR 44.060-236 rev 2 Clarification on T3190 management (Rel-5)	Mitsubishi	Approved
GP-021446	CR 44.060-237 Packet DBPSCH Ack/Nack messages	Nokia	Postponed
GP-022251	CR 44.060-237 rev 1 PACKET DBPSCH ACK/NACK messages (Rel 5) (Postponed from GERAN#10)	Nokia	Revised
GP-022658	CR 44.060-237 rev 2 PACKET DBPSCH ACK/NACK messages (Rel-5)	Nokia	Revised
GP-022801	CR 44.060-237 rev 3 PACKET DBPSCH ACK/NACK messages (Rel-5)	Nokia	Approved
GP-021654	CR 44.060-238 Introduction of multiple TBFs in section 8 (Rel 5)	Siemens	Postponed
GP-022272	CR 44.060-238 rev 1 Introduction of Multiple TBFs into section 8 (Rel 5)	Siemens	Revised
GP-022553	CR 44.060-238 rev 2 Introduction of Multiple TBFs into section 8 (Rel 5)	Siemens	Postponed
GP-021682	CR 44.060-239 Alignment of the MS behaviour when timer T3168 or T3190 expires (Rel 4)	Alcatel	Rejected

Tdoc	Title	Source	Status
GP-021683	CR 44.060-240 Alignment of the MS behaviour when timer T3168 or T3190 expires (Rel 5)	Alcatel	Rejected
GP-021684	CR 44.060-241 Clarification on timer T3176 handling (Rel 5)	Alcatel	Revised
GP-022020	CR 44.060-241 rev 1 Clarification on timer T3176 handling (Rel-5)	Alcatel	Rejected
GP-022446	CR 44.060-242 rev 1 Utilisation of Packet Uplink Dummy control block (Rel 5)	Philips	Postponed
GP-021773	CR 44.060-242 Utilisation of Packet Uplink Dummy control block (Rel 5)	Philips	Postponed
GP-021772	CR 44.060-243 Priority of polling response (Rel 5)	Mitsubishi	Postponed
GP-022399	CR 44.060-243 rev 1 Priority of polling response (Rel 5)	Mitsubishi	Revised
GP-022648	CR 44.060-243 rev 2 Priority of polling response (Rel-5)	Mitsubishi	Revised
GP-022795	CR 44.060-243 rev 3 Priority of polling response (Rel-5)	Mitsubishi	Approved
GP-021672	CR 44.060-244 Inconsistency in MS RA capabilities retransmission procedure (Rel 4)	Mitsubishi	Withdrawn
GP-021673	CR 44.060-245 Inconsistency in MS RA capabilities retransmission procedure (Rel 5)	Mitsubishi	Withdrawn
GP-021829	CR 44.060-246 Corrections and Clarifications on Enhanced Measurement Parameters(Rel 4)	Siemens	Withdrawn
GP-021830	CR 44.060-247 Corrections and Clarifications on Enhanced Measurement Parameters(Rel 5)	Siemens	Withdrawn
GP-021993	CR 44.060-248 Modification of MS behaviour when T3190 expires (Rel-5)	Alcatel	Revised
GP-022081	CR 44.060-248 rev 1 Modification of MS behaviour when T3190 expires (Rel-5)	Alcatel	Approved
GP-022010	CR 44.060-249 Removal of relaxation during contention resolution (Rel-5)	Alcatel	Revised
GP-022106	CR 44.060-249 rev 1 Removal of relaxation during contention resolution (Rel-5)	Alcatel	Postponed
GP-022018	CR 44.060-250 CSN-1 fault in Packet Timeslot Reconfigure (Rel-4)	Ericsson	Approved
GP-021916	CR 44.060-251 Modification of the MS behaviour when timer T3168 expires (Rel 5)	Alcatel	Revised
GP-022051	CR 44.060-251 rev 1 Modification of the MS behaviour when timer T3168 expires (Rel-5)	Alcatel	Revised
GP-022058	CR 44.060-251 rev 2 Modification of the MS behaviour when timer T3168 expires (Rel-5)	Alcatel	Approved
GP-022059	CR 44.060-252 Modification of timer T3176 handling (Rel 5)	Alcatel	Revised
GP-022100	CR 44.060-252 rev 1 Modification of timer T3176 handling (Rel-5)	Alcatel	Approved
GP-022241	CR 44.060-253 HFN synchronization at TBF establishment on SBPSCH (Rel 5)	Nokia	Revised
GP-022761	CR 44.060-253 rev 1 HFN synchronization at TBF establishment on SBPSCH (Rel-5)	Nokia	Approved
GP-022519	CR 44.060-254 Segmented retransmission of the final RLC data block (Rel 4)	Nortel	Postponed
GP-022520	CR 44.060-255 Segmented retransmission of the final RLC data block (Rel 5)	Nortel	Postponed
GP-022811	CR 44.060-256 Timer for stealing blocks on DBPSCH (Rel-5)	Siemens	Approved
GP-022243	CR 44.060-258 Provision of the Timing Advance and subchannel in PACKET DBPSCH ASSIGNMENT message (Rel 5)	Nokia	Approved
GP-022218	CR 44.060-259 Timers for Multiple TBFs (Rel 5)	Siemens	Postponed
GP-022219	CR 44.060-260 Removal of Control Ack from Multiple TBF assignment messages (Rel 5)	Siemens	Postponed
GP-022220	CR 44.060-261 Multiple TBF and Iu support in section 9 (Rel 5)	Siemens	Postponed
GP-022221	CR 44.060-262 Release of PDCH containing Uplink Control Timeslot (Rel 5)	Siemens	Revised
GP-022667	CR 44.060-262 rev 1 Release of PDCH containing Uplink Control Timeslot (Rel-5)	Siemens	Approved
GP-022222	CR 44.060-263 Addition of Uplink Control Timeslot to Packet Uplink Assignment and Timeslot Reconfigure messages (Rel 5)	Siemens	Postponed

Tdoc	Title	Source	Status
GP-022223	CR 44.060-264 Invalid timeslot in Packet Control Acknowledgement (Rel 5)	Siemens	Postponed
GP-022224	CR 44.060-265 Introduction of Multiple TBFs into section 7 for A/Gb mode (Rel 5)	Siemens	Postponed
GP-022273	CR 44.060-266 PACKET ACCESS REJECT for multiple TBFs (Rel 5)	Siemens	Postponed
GP-022360	CR 44.060-267 Clarification of the CN release indicators (Rel 5)	Siemens	Approved
GP-022419	CR 44.060-268 Introduction of SDCCH/6 (Rel 5)	Siemens	Withdrawn
GP-022471	CR 44.060-269 System Performance requirements in TCH and DCCH TBF modes: updates of counters and PACKET DBPSCH ASSIGNMENT message (Rel 5)	Nokia	Revised
GP-022680	CR 44.060-269 rev 1 System Performance requirements in TCH and DCCH TBF modes: updates of counters and PACKET DBPSCH ASSIGNMENT message (Rel-5)	Nokia	Approved
GP-022505	CR 44.060-270 Correction of Packet Power Control/Timing Advance message encoding (5)	Alcatel	Revised
GP-022652	CR 44.060-270 rev 1 Correction of Packet Power Control/Timing Advance message encoding (Rel-5)	Alcatel	Revised
GP-022796	CR 44.060-270 rev 2 Correction of Packet Power Control/Timing Advance message encoding (Rel-5)	Alcatel	Approved
GP-022506	CR 44.060-271 Clarification of CBCH description IE encoding in PSI8 (5)	Alcatel	Revised
GP-022653	CR 44.060-271 rev 1 Clarification of CBCH description IE encoding in PSI8 (Rel-5)	Alcatel	Revised
GP-022791	CR 44.060-271 rev 2 Clarification of CBCH description IE encoding in PSI8 (Rel-5)	Alcatel	Revised
GP-022797	CR 44.060-271 rev 3 Clarification of CBCH description IE encoding in PSI8 (Rel-5)	Alcatel	Approved
GP-022507	CR 44.060-272 Consistent behaviour in an EGPRS cell in case of uplink signalling causing downlink user data transfer (6)	Alcatel	Withdrawn
GP-022569	CR 44.060-273 Consistent behaviour in an EGPRS cell in case of uplink signalling causing downlink user data transfer (Rel-4)	Alcatel	Revised
GP-022780	CR 44.060-273 rev 1 Consistent behaviour in an EGPRS cell in case of uplink signalling causing downlink user data transfer (Rel-4)	Alcatel	Revised
GP-022823	CR 44.060-273 rev 2 Consistent behaviour in an EGPRS cell in case of uplink signalling causing downlink user data transfer (Rel-4)	Alcatel	Approved*
GP-022570	CR 44.060-274 Consistent behaviour in an EGPRS cell in case of uplink signalling causing downlink user data transfer (Rel-5)	Alcatel	Revised
GP-022781	CR 44.060-274 rev 1 Consistent behaviour in an EGPRS cell in case of uplink signalling causing downlink user data transfer (Rel-5)	Alcatel	Revised
GP-022824	CR 44.060-274 rev 2 Consistent behaviour in an EGPRS cell in case of uplink signalling causing downlink user data transfer (Rel-5)	Alcatel	Approved*
GP-022674	CR 44.060-275 Applicability of MS RAC in PRR (Rel-5)	Siemens	Approved
GP-021516	CR 44.071-010 Remove ambiguity on encoding of all LLP components (Rel-4)	Siemens	Approved
GP-022233	CR 44.118-001 Variables and Ies (Rel 5)	Nokia	Revised
GP-022588	CR 44.118-001 rev 1 Variables and IEs (Rel-5)	Nokia	Approved
GP-022234	CR 44.118-002 DTM Request for Iu mode procedures (Rel 5)	Nokia	Revised
GP-022586	CR 44.118-002 rev 1 DTM Request for Iu mode procedures (Rel-5)	Nokia	Revised
GP-022768	CR 44.118-002 rev 2 DTM Request for Iu mode procedures (Rel-5)	Nokia	Revised
GP-022807	CR 44.118-002 rev 3 DTM Request for Iu mode procedures (Rel-5)	Nokia	Approved
GP-022236	CR 44.118-003 Correction of Multislot Capability Indication (Rel 5)	Nokia	Revised
GP-022592	CR 44.118-003 rev 1 Correction of Multislot Capability Indication (Rel-5)	Nokia	Withdrawn
GP-022428	CR 44.118-004 correction sub-clause 7.8.1.4 (Rel 5)	Nokia	Revised
GP-022593	CR 44.118-004 rev 1 Correction sub-clause 7.8.1.4 (Rel-5)	Nokia	Approved
GP-022429	CR 44.118-005 RLC Discard (Rel 5)	Nokia	Revised
GP-022594	CR 44.118-005 rev 1 RLC Discard (Rel-5)	Nokia	Approved
GP-022430	CR 44.118-006 PDCP Info and RFC 3095 context (Rel 5)	Nokia	Revised

Tdoc	Title	Source	Status
GP-022595	CR 44.118-006 rev 1 PDCP Info and RFC 3095 context (Rel-5)	Nokia	Approved
GP-022431	CR 44.118-007 Activation time sub-clause 7.19.4.1 (Rel 5)	Nokia	Revised
GP-022596	CR 44.118-007 rev 1 Activation time sub-clause 7.19.4.1 (Rel-5)	Nokia	Revised
GP-022786	CR 44.118-007 rev 2 Activation time sub-clause 7.19.4.1 (Rel-5)	Nokia	Approved
GP-022509	CR 44.118-008 Inter-RAT cell reselection between GERAN Iu mode and UTRAN (Rel-5)	Nokia	Revised
GP-022589	CR 44.118-008 rev 1 Inter-RAT cell reselection between GERAN Iu mode and UTRAN (Rel-5)	Nokia	Revised
GP-022597	CR 44.118-008 rev 2 Inter-RAT cell reselection between GERAN Iu mode and UTRAN (Rel-5)	Nokia	Revised
GP-022787	CR 44.118-008 rev 3 Inter-RAT cell reselection between GERAN Iu mode and UTRAN (Rel-5)	Nokia	Approved
GP-022510	CR 44.118-009 Handover and inter-RAT cell reselection between GERAN Iu mode and UTRAN (Rel-5)	Nokia	Revised
GP-022590	CR 44.118-009 rev 1 Handover and inter-RAT cell reselection between GERAN Iu mode and UTRAN (Rel-5)	Nokia	Revised
GP-022599	CR 44.118-009 rev 2 Handover and inter-RAT cell reselection between GERAN Iu mode and UTRAN (Rel-5)	Nokia	Revised
GP-022790	CR 44.118-009 rev 3 Handover and inter-RAT cell reselection between GERAN Iu mode and UTRAN (Rel-5)	Nokia	Approved
GP-022762	CR 44.118-010 HFN synchronization at TBF establishment on SBPSCH (Rel-5)	Nokia	Revised
GP-022806	CR 44.118-010 rev 1 HFN synchronization at TBF establishment on SBPSCH (Rel-5)	Nokia	Approved
GP-022242	CR 44.160-001 Clarification of SI 13-Alt in Table 5.4.2.1.4 (Rel 5)	Nokia	Revised
GP-022763	CR 44.160-001 rev 1 Clarification of SI 13-Alt in Table 5.4.2.1.4 (Rel-5)	Nokia	Approved
GP-022244	CR 44.160-002 Ciphering of PACKET DBPSCH ACK/NACK messages (Rel 5)	Nokia	Revised
GP-022764	CR 44.160-002 rev 1 Ciphering of PACKET DBPSCH ACK/NACK messages (Rel-5)	Nokia	Approved
GP-022254	CR 44.160-003 Clarification of measurement reporting (Rel 5)	Nokia	Approved
GP-022248	CR 44.160-004 Clarification on countdown value for SFACCH (Rel 5)	Nokia	Approved
GP-022245	CR 44.160-005 Correction TCH T-RLC (Rel 5)	Nokia	Approved
GP-022247	CR 44.160-006 Definition of RLC buffer (Rel 5)	Nokia	Revised
GP-022765	CR 44.160-006 rev 1 Definition of RLC buffer (Rel-5)	Nokia	Withdrawn
GP-022249	CR 44.160-007 Definition of thresholds T1 and T2 for mapping of SRBs on logical channels (Rel 5)	Nokia	Rejected
GP-022240	CR 44.160-008 HFN synchronization at TBF establishment on SBPSCH (Rel 5)	Nokia	Revised
GP-022760	CR 44.160-008 rev 1 HFN synchronization at TBF establishment on SBPSCH (Rel-5)	Nokia	Approved
GP-022246	CR 44.160-009 MS synchronization when no RLC/MAC block scheduled for transmission on DBPSCH (Rel 5)	Nokia	Approved
GP-022238	CR 44.160-010 System performance requirements in TCH and DCCH TBF modes (Rel 5)	Nokia	Revised
GP-022679	CR 44.160-010 rev 1 System performance requirements in TCH and DCCH TBF modes (Rel-5)	Nokia	Revised
GP-022805	CR 44.160-010 rev 2 System performance requirements in TCH and DCCH TBF modes (Rel-5)	Nokia	Approved
GP-022225	CR 44.160-011 Abnormal cases for TBF establishment during Packet Cell Change Order (Rel 5)	Siemens	Approved
GP-022226	CR 44.160-012 Abnormal cases for TBF establishment via PCCCH (Rel 5)	Siemens	Revised
GP-022668	CR 44.160-012 rev 1 Abnormal cases for TBF establishment via PCCCH (Rel-5)	Siemens	Approved
GP-022227	CR 44.160-013 USF scheduling for PDTCH on DBPSCH (Rel 5)	Siemens	Revised



Tdoc	Title	Source	Status
GP-022672	CR 44.160-013 rev 1 USF scheduling for PDTCH on DBPSCH (Rel-5)	Siemens	Revised
GP-022804	CR 44.160-013 rev 2 USF scheduling for PDTCH on DBPSCH (Rel-5)	Siemens	Approved
GP-022228	CR 44.160-014 Incorrect reference to 44.060 in two phase access procedures (Rel 5)	Siemens	Revised
GP-022673	CR 44.160-014 rev 1 Incorrect reference to 44.060 in two phase access procedures (Rel-5)	Siemens	Approved
GP-022229	CR 44.160-015 Add abnormal cases to section 8 (Rel 5)	Siemens	Postponed
GP-022230	CR 44.160-016 Correction to RLC/MAC PDU format (Rel 5)	Siemens	Revised
GP-022675	CR 44.160-016 rev 1 Correction to RLC/MAC PDU format (Rel-5)	Siemens	Approved
GP-022156	CR 44.160-017 SFACCH operation	AT&T Wireless	Revised
GP-022666	CR 44.160-017 rev 1 SFACCH operation (Rel-5)	AT&T Wireless	Revised
GP-022803	CR 44.160-017 rev 2 SFACCH operation (Rel-5)	AT&T Wireless	Approved
GP-022276	CR 44.160-018 Multiple TBFs in Iu mode in section 8 (Rel 5)	Siemens	Revised
GP-022554	CR 44.160-018 rev 1 Multiple TBFs in Iu mode in section 8 (Rel 5)	Siemens	Revised
GP-022774	CR 44.160-018 rev 2 Multiple TBFs in Iu mode in section 8 (Rel-5)	Siemens	Withdrawn
GP-022277	CR 44.160-019 List of RLC/MAC Control messages that may be sent on the SACCH, SDCCH, FACCH and PACCH when mapped onto DBPSCH (Rel 5)	Siemens	Revised
GP-022767	CR 44.160-019 rev 1 List of RLC/MAC Control messages that may be sent on the SACCH, SDCCH, FACCH and PACCH when mapped onto DBPSCH (Rel-5)	Siemens	Approved
GP-022508	CR 44.160-020 Description of the cause and message to be used upon uplink access in Iu mode (5)	Alcatel	Revised
GP-022651	CR 44.160-020 rev 1 Description of the cause and message to be used upon uplink access in Iu mode (Rel-5)	Alcatel	Revised
GP-022798	CR 44.160-020 rev 2 Description of the cause and message to be used upon uplink access in Iu mode (Rel-5)	Alcatel	Approved
GP-022447	CR 44.160-021 Condition when to transmit PACKET CONTROL ACKNOWLEDGEMENT during contention resolution (Rel 5)	Siemens	Postponed
GP-022650	CR 44.160-022 Clarification on T3190 management (Rel-5)	Mitsubishi	Approved
GP-022766	CR 44.160-023 Removal of thresholds T1 and T2 for mapping of SRBs on logical channels (Rel-5)	Nokia	Revised
GP-022808	CR 44.160-023 rev 1 Removal of thresholds T1 and T2 for mapping of SRBs on logical channels (Rel-5)	Nokia	Approved
GP-021434	CR 45.001-016 Corrections and clean up (Rel 5)	Nokia	Approved
GP-021626	CR 45.001-017 Introduction of SDCCH/6 (Rel 5)	Siemens	Postponed
GP-022420	CR 45.001-017 Introduction of SDCCH/6 (Rel 5)	Siemens	Rejected
GP-021629	CR 45.001-018 Miscellaneous corrections (Rel 5)	Siemens	Approved
GP-021796	CR 45.001-019 Introduction of TAPS into 45.001 (Rel 6)	ETSI Project TETRA	Revised
GP-021411	CR 45.002-051 Editorial clean up of references (Rel 5)	Nokia	Approved
GP-021627	CR 45.002-052 Introduction of SDCCH/6 (Rel 5)	Siemens	Postponed
GP-022421	CR 45.002-052 rev 1 Introduction of SDCCH/6 (Rel 5)	Siemens	Rejected
GP-021668	CR 45.002-053 Multislot configurations for OTCH/F (Rel 5)	Nokia	Approved
GP-021669	CR 45.002-054 Alignment and additions for Iu mode (Rel 5)	Nokia	Approved
GP-021437	CR 45.003-016 rev 2 Channel coding for AMR-WB on O-TCH (Rel 5)	Nokia	Revised
GP-022025	CR 45.003-016 rev 3 Channel coding for AMR-WB on O-TCH (Rel 5)	Nokia	Approved
GP-021435	CR 45.003-021 Corrections and clean up (Rel 5)	Nokia	Approved
GP-021761	CR 45.003-022 Update of channel coding and interleaving organisation for AMR-WB 8-PSK (Rel 5)	Siemens	Approved
GP-021436	CR 45.004-005 Corrections and clean up (Rel 5)	Nokia	Approved
GP-021401	CR 45.005-043 Introduction of WB-AMR 8PSK (Release 5)	Ericsson, Nokia, Siemens	Approved
GP-021402	CR 45.005-044 Introduction of TCH/WFS receiver performance requirements (Release 5)	Ericsson, Nokia, Siemens	Revised

Tdoc	Title	Source	Status
GP-021958	CR 45.005-044 rev 1 Introduction of TCH/WFS receiver performance requirements (Release 5)	Ericsson, Nokia, Siemens	Approved
GP-021403	CR 45.005-045 Introduction of O-TCH/AHS receiver performance requirements (Release 5)	Ericsson, Nokia, Siemens	Approved
GP-021404	CR 45.005-046 Introduction of O-TCH/WFS receiver performance requirements (Release 5)	Ericsson, Nokia, Siemens	Approved
GP-021405	CR 45.005-047 Introduction of O-TCH/WHS receiver performance requirements (Release 5)	Ericsson, Nokia, Siemens	Approved
GP-021406	CR 45.005-048 Introduction of O-FACCH receiver performance requirements (Release 5)	Ericsson, Nokia, Siemens	Revised
GP-022023	CR 45.005-048 rev 1 Introduction of O-FACCH receiver performance requirements (Release 5)	Ericsson, Nokia, Siemens	Approved
GP-021412	CR 45.005-049 Editorial clean up of references (Rel 5)	Nokia	Approved
GP-021545	CR 45.005-050 Reference sensitivity and interference performance requirements for TCH/AFS and TCH/AHS (Rel 4)	Ericsson, Philips, Nokia	Rejected
GP-021546	CR 45.005-051 Reference sensitivity and interference performance requirements for TCH/AFS and TCH/AHS (Rel 5)	Ericsson, Philips, Nokia	Rejected
GP-021797	CR 45.005-052 Implementation of TAPS frequency ranges into 45.005 (Rel 5)	ETSI Project TETRA	Revised
GP-022030	CR 45.005-053 AMR AHS7.4 static channel performance correction (Rel 4)	Alcatel	Approved
GP-022031	CR 45.005-054 AMR AHS7.4 static channel performance correction (Rel 5)	Alcatel	Approved
GP-022152	CR 45.005-055 Introduction of Inband FER, EVSIDUR and EVRFR performance requirements for O-TCH/AHS, O-TCH/WFS and O-TCH/WHS (Rel 5) - WITHDRAWN	Ericsson, Siemens, Nokia	Withdrawn
GP-022468	CR 45.005-056 Correction to TCH/WFS receiver performance requirements	Ericsson, Nokia, Siemens, Philips	Approved
GP-022530	CR 45.005-057 Correction to O-TCH/WHS receiver performance requirements (Rel 5)	Ericsson, Nokia, Siemens, Philips	Approved
GP-022538	CR 45.005-058 Reference sensitivity and interference performance requirements for TCH/AFS and TCH/AHS (Rel 4)	Nokia, Philips, Ericsson	Revised
GP-022641	CR 45.005-058 rev 1 Reference sensitivity and interference performance requirements for TCH/AFS and TCH/AHS (Rel 4)	Nokia, Philips, Ericsson	Revised
GP-022717	CR 45.005-058 rev 2 Reference sensitivity and interference performance requirements for TCH/AFS and TCH/AHS (Rel 4)	Nokia, Philips, Ericsson	Revised
GP-022816	CR 45.005-058 rev 3 Reference sensitivity and interference performance requirements for TCH/AFS and TCH/AHS (Rel 4)	Nokia, Philips, Ericsson	Approved
GP-021612	CR 45.008-099 rev 1 Usage of CBQ2 (Rel 4)	Siemens	Withdrawn
GP-021613	CR 45.008-100 rev 1 Usage of CBQ2 (Rel 5)	Siemens	Withdrawn
GP-021413	CR 45.008-115 Editorial clean up of references (Rel 5)	Nokia	Revised
GP-021839	CR 45.008-115 rev 1 Editorial clean up of references (Rel 5)	Nokia	Approved
GP-021415	CR 45.008-116 RXQUAL_SUB performance requirement for AMR during speech periods (Rel 5)	Nokia	Approved
GP-021417	CR 45.008-117 Correction on the applicability of reporting priority (Rel 4)	Nokia	Approved
GP-021418	CR 45.008-118 Correction on the applicability of reporting priority (Rel 5)	Nokia	Approved
GP-021419	CR 45.008-119 Clarification for EMR on SDCCH (Rel 5)	Nokia	Revised
GP-021955	CR 45.008-119 rev 1 Clarification for EMR on SDCCH (Rel 5)	Nokia	Approved
GP-021421	CR 45.008-120 EMR in case of signalling only mode (Rel 4)	Nokia	Approved
GP-021422	CR 45.008-121 EMR in case of signalling only mode (Rel 5)	Nokia	Approved
GP-021424	CR 45.008-122 Correction to cell reselection time requirement (GSM to UTRAN FDD) (Rel 4)	Nokia	Approved
GP-021425	CR 45.008-123 Correction to cell reselection time requirement (GSM to UTRAN FDD) (Rel 5)	Nokia	Approved
GP-021430	CR 45.008-124 Correction on call re-establishment for multimode terminals (Rel 4)	Nokia	Rejected

Tdoc	Title	Source	Status
GP-021431	CR 45.008-125 Correction on call re-establishment for multimode terminals (Rel 5)	Nokia	Approved
GP-021608	CR 45.008-126 Removal of CBQ2 (Rel 4)	Siemens	Revised
GP-022066	CR 45.008-126 rev 1 Removal of CBQ2 (Rel 4)	Siemens	Approved
GP-021607	CR 45.008-127 Removal of CBQ2 (Rel 5)	Siemens	Revised
GP-022065	CR 45.008-127 rev 1 Removal of CBQ2 (Rel 5)	Siemens	Approved
GP-021630	CR 45.008-128 Removal of obsolete reference to DRX parameters (Release 5)	Siemens	Approved
GP-021659	CR 45.008-129 Correction: validity period of NC_FREQUENCY_LIST (Rel 4)	Motorola	Revised
GP-021927	CR 45.008-129 rev 1 Correction: validity period of NC_FREQUENCY_LIST (Rel 4)	Motorola	Approved
GP-021660	CR 45.008-130 Correction: validity period of NC_FREQUENCY_LIST (Rel 5)	Motorola	Revised
GP-021928	CR 45.008-130 rev 1 Correction: validity period of NC_FREQUENCY_LIST (Rel 5)	Motorola	Approved
GP-021670	CR 45.008-131 Iu mode specific EPC (Rel 5)	Nokia	Revised
GP-021931	CR 45.008-131 rev 1 Iu mode specific EPC (Rel 5)	Nokia	Postponed
GP-022197	CR 45.008-131 rev 1 Power control for Iu mode (Rel 5)	Nokia	Revised
GP-022645	CR 45.008-131 rev 2 Power control for Iu mode (Rel 5)	Nokia	Approved
GP-021789	CR 45.008-132 Corrections and Clarifications on Enhanced Measurement Parameters(Rel 4)	Siemens	Rejected
GP-021790	CR 45.008-133 Corrections and Clarifications on Enhanced Measurement Parameters(Rel 5)	Siemens	Rejected
GP-021798	CR 45.008-134 TAPS introduced into 45.008 (Rel 6)	ETSI Project TETRA	Rejected
GP-022021	CR 45.008-135 Inclusion of AMR-WB on O-TCH	Nokia	Approved
GP-022215	CR 45.008-136 8-PSK on the BCCH carrier	Nokia	Revised
GP-022644	CR 45.008-136 rev 1 8-PSK on the BCCH carrier	Nokia	Approved
GP-022270	CR 45.008-137 Introduction of Iu mode terminology (Rel 5)	Nokia	Revised
GP-022646	CR 45.008-137 rev 1 Introduction of Iu mode terminology (Rel 5)	Nokia	Revised
GP-022741	CR 45.008-137 rev 2 Introduction of Iu mode terminology (Rel 5)	Nokia	Approved
GP-022502	CR 45.008-138 Clarification to MS output power (Rel 5)	Alcatel	Approved
GP-021414	CR 45.009-015 Editorial clean up of references (Rel 5)	Nokia	Approved
GP-021760	CR 45.010-005 Correction to inter system handover interruption times (Rel 4)	Siemens/Samsung	Revised
GP-021930	CR 45.010-005 rev 1 Correction to inter system handover interruption times (Rel 4)	Siemens/Samsung	Approved
GP-021933	CR 45.010-006 Exclusion of TLLI after contention resolution (Rel 5)	Ericsson	Rejected
GP-022216	CR 45.010-007 Editorial clean up of references (Rel 5)	Nokia	Approved
GP-021799	CR 45.050-001 Implementation of TAPS frequency ranges into 45.050 (Rel 6)	ETSI Project TETRA	Revised
GP-021757	CR 48.008-042 rev 4 Exchange of cell traffic load information using the handover procedure (Rel 5)	Vodafone	Revised
GP-022039	CR 48.008-042 rev 5 Exchange of cell traffic load information using the handover procedure (Rel-5)	Vodafone	Revised
GP-022117	CR 48.008-042 rev 6 Exchange of cell traffic load information using the handover procedure (Rel-5)	Vodafone	Approved
GP-021722	CR 48.008-045 rev 4: Alignment of number of codecs for WB-AMR to proposed set (Rel-5)	Ericsson	Approved
GP-021744	CR 48.008-047 rev 1 Exchange of cell traffic load information using the handover procedure during intersystem handover (Rel 5)	Siemens	Withdrawn
GP-021450	CR 48.008-048: Length of Location Estimate IE in PERFORM LOCATION RESPONSE message (Rel 4)	Nokia	Approved
GP-021451	CR 48.008-049: Length of Location Estimate IE in PERFORM LOCATION RESPONSE message (Rel 5)	Nokia	Approved
GP-021453	CR 48.008-050 Clarification of the Cell Identifier (Serving) IE in HANDOVER REQUEST message in UMTS to GSM handover (Rel 4)	Nokia	Revised

Tdoc	Title	Source	Status
GP-021899	CR 48.008-050 rev 1 Clarification of the Cell Identifier (Serving) IE in HANDOVER REQUEST message in UMTS to GSM handover (Rel-4)	Nokia	Approved
GP-021454	CR 48.008-051 Clarification of the Cell Identifier (Serving) IE in HANDOVER REQUEST message in UMTS to GSM handover (Rel 5)	Nokia	Revised
GP-021900	CR 48.008-051 rev 1 Clarification of the Cell Identifier (Serving) IE in HANDOVER REQUEST message in UMTS to GSM handover (Rel-5)	Nokia	Approved
GP-021456	CR 48.008-052 Clarification of the RNC-ID coding in Cell Identifier and Cell Identifier List IEs (Rel 4)	Nokia	Revised
GP-021902	CR 48.008-052 rev 1 Clarification of the RNC-ID coding in Cell Identifier and Cell Identifier List IEs (Rel-4)	Nokia	Approved
GP-021449	CR 48.008-053 Clarification of the RNC-ID coding in Cell Identifier and Cell Identifier List IEs (Rel 5)	Nokia	Revised
GP-021903	CR 48.008-053 rev 1 Clarification of the RNC-ID coding in Cell Identifier and Cell Identifier List IEs (Rel-5)	Nokia	Approved
GP-021745	CR 48.008-054 Multirate Configuration IE, Correction of Reference (Rel 4)	Siemens	Approved
GP-021746	CR 48.008-055 Multirate Configuration IE, Correction of Reference (Rel 5)	Siemens	Approved
GP-022321	CR 48.008-056 Support for Shared Network in connected mode (using encapsulated BSSAP transport of SNA Access Information) (Rel 5)	Nokia	Approved
GP-022463	CR 48.008-057 CS data services for GERAN Iu-mode (Rel 5)	Siemens	Revised
GP-022567	CR 48.008-057 rev 1 CS data services for GERAN Iu-mode (Rel-5)	Siemens	Revised
GP-022654	CR 48.008-057 rev 2 CS data services for GERAN Iu-mode (Rel-5)	Siemens	Revised
GP-022771	CR 48.008-057 rev 3 CS data services for GERAN Iu-mode (Rel-5)	Siemens	Approved
GP-022489	CR 48.008-058 Corrections to CRRM procedures (Rel 5)	Vodafone, Alcatel	Revised
GP-022772	CR 48.008-058 rev 1 Corrections to CRRM procedures (Rel-5)	Vodafone, Alcatel	Approved
GP-021723	CR 48.018-058 rev 3: Introduction of Global CN-Id when CS paging is done via the PS domain (Rel-5)	Ericsson	Approved
GP-021836	CR 48.018-061 rev 4 Introduction of flow control per PFC between the SGSN and BSS	Ericsson	Approved
GP-021502	CR 48.018-070 SI/PSI coding in RAN-INFORMATION Container Unit (Rel 5)	Ericsson	Revised
GP-022046	CR 48.018-070 rev 1 SI/PSI coding in RAN-INFORMATION Container Unit (Rel-5)	Ericsson	Revised
GP-022102	CR 48.018-070 rev 2 SI/PSI coding in RAN-INFORMATION Container Unit (Rel 5)	Ericsson	Approved
GP-021689	CR 48.018-071 Removal of an inconsistency in LLC DISCARDED description (Rel 4)	Nortel	Revised
GP-021886	CR 48.018-071 rev 1 Removal of an inconsistency in LLC DISCARDED description (Rel-4)	Nortel Networks	Rejected
GP-021690	CR 48.018-072 Removal of an inconsistency in LLC DISCARDED description (Rel 5)	Nortel	Revised
GP-021887	CR 48.018-072 rev 1 Removal of an inconsistency in LLC DISCARDED description (Rel-5)	Nortel Networks	Revised
GP-022054	CR 48.018-072 rev 2 Removal of an inconsistency in LLC DISCARDED description (Rel-5)	Nortel Networks	Approved
GP-021691	CR 48.018-073 Removal of an inconsistency in BVC Reset procedure description (Rel 5)	Nortel	Revised
GP-021786	CR 48.018-073 rev 1 Removal of an inconsistency in BVC Reset procedure description (Rel 5)	Nortel	Approved
GP-022556	CR 48.018-074 Setting of RAI in Suspend and appropriate handling in SGSN (Rel 4)	Siemens	Rejected
GP-022499	CR 48.018-075 Setting of RAI in Suspend and appropriate handling in SGSN (Rel 5)	Siemens	Revised

Tdoc	Title	Source	Status
GP-022584	CR 48.018-075 rev 1 Setting of RAI in Suspend and appropriate handling in SGSN (Rel-5)	Siemens	Revised
GP-022778	CR 48.018-075 rev 2 Setting of RAI in Suspend and appropriate handling in SGSN (Rel-5)	Siemens	Approved
GP-021358	CR 48.031-005 Correction of Error Indications for SMLCPP (Rel 4)	Siemens	Rejected
GP-021918	CR 48.031-006 Correction of Error Indications for SMLCPP (Rel-4)	Siemens	Approved
GP-021483	CR 48.056-001 Removal of reference to obsolete standard (Rel 4) – WITHDRAWN	MCC	Withdrawn
GP-021724	CR 48.058-010: Alignment of number of codecs for WB-AMR to proposed set (Rel-5)	Ericsson	Approved
GP-021480	CR 48.060-004 Simplification for AMR-WB TRAU frames (REL 5)	Ericsson	Revised
GP-022022	CR 48.060-004 rev 1 Simplification for AMR-WB TRAU frames (REL 5)	Ericsson, Siemens	Withdrawn
GP-021783	CR 48.060-005 Simplification for AMR-WB TRAU frames (Rel 5)	Siemens	Revised
GP-022071	CR 48.060-005 rev 1 Simplification for AMR-WB TRAU frames (Rel 5)	Siemens	Approved
GP-022534	CR 48.060-006 Correction of References in Clause 5.5.1 (Rel 5)	Siemens	Approved
GP-021725	CR 49.031-019 rev 2: Correction of Length Indicator definition (Rel-5)	Siemens	Approved
GP-021361	CR 49.031-020 Clarify Requested GPS Assistance Data IE (Rel 4)	Siemens	Revised
GP-021981	CR 49.031-020 rev 1 Clarify Requested GPS Assistance Data IE (Rel-4)	Siemens	Approved
GP-021408	CR 49.031-021 Clarify Requested GPS Assistance Data IE (Rel 5)	Siemens	Revised
GP-021982	CR 49.031-021 rev 1 Clarify Requested GPS Assistance Data IE (Rel-5)	Siemens	Approved
GP-022312	CR 51.010-1-1000 Whilst in Standby State / Downlink TBF establishment	Vodafone	Revised
GP-022725	CR 51.010-1-1000 rev1 Whilst in Standby State / Downlink TBF establishment	Vodafone	Approved
GP-022313	CR 51.010-1-1001 MT CS establishment whilst in packet transfer mode with a downlink TBF established	Vodafone	Revised
GP-022726	CR 51.010-1-1001rev 1 MT CS establishment whilst in packet transfer mode with a downlink TBF established	Vodafone	Approved
GP-022314	CR 51.010-1-1002 MT CS establishment whilst in packet transfer mode with a uplink TBF established	Vodafone	Revised
GP-022727	CR 51.010-1-1002 rev 1 MT CS establishment whilst in packet transfer mode with a uplink TBF established	Vodafone	Approved
GP-022315	CR 51.010-1-1003 MO CS establishment whilst in packet transfer mode with uplink and downlink TBFs established	Vodafone	Revised
GP-022728	CR 51.010-1-1003 rev 1 MO CS establishment whilst in packet transfer mode with uplink and downlink TBFs established	Vodafone	Approved
GP-022316	CR 51.010-1-1004 MO CS establishment whilst in packet transfer mode and DTM is not supported in current cell	Vodafone	Revised
GP-022729	CR 51.010-1-1004 rev 1 MO CS establishment whilst in packet transfer mode and DTM is not supported in current cell	Vodafone	Approved
GP-022317	CR 51.010-1-1005 Exclusive allocation in single-slot configuration	Vodafone	Revised
GP-022730	CR 51.010-1-1005 rev 1 Exclusive allocation in single-slot configuration	Vodafone	Approved
GP-022318	CR 51.010-1-1006 Exclusive allocation in multi-slot configuration	Vodafone	Revised
GP-022731	CR 51.010-1-1006 rev 1 Exclusive allocation in multi-slot configuration	Vodafone	Approved
GP-022319	CR 51.010-1-1007 Dynamic allocation in multi-slot configuration	Vodafone	Revised
GP-022732	CR 51.010-1-1007 rev 1 Dynamic allocation in multi-slot configuration	Vodafone	Approved
GP-022324	CR 51.010-1-1008 Correction of misspelling for clause 20.22.5 - Network controlled Cell re-selection in Transfer Mode - Rel-4	Nokia	Approved

Tdoc	Title	Source	Status
GP-022325	CR 51.010-1-1009 Clarification of of the NC used in the PACKET CELL CHANGE ORDER in the Expected Sequence for clause 42.4.2.1.1 - Cell change order procedure / Uplink transfer / Normal case - Rel-4	Nokia	Approved
GP-022326	CR 51.010-1-1010 Correction of Test Purpose and Expected Sequence for clause 42.4.2.2.1 - Cell change order procedure / Downlink transfer / Normal case - Rel-4	Nokia	Approved
GP-022327	CR 51.010-1-1011 Various corrections in the Expected Sequence for clause 42.4.2.3.1 - Cell change order procedure / Simultaneous uplink and downlink transfer / Normal case - Rel-4	Nokia	Withdrawn
GP-022328	CR 51.010-1-1012 Uplink data transfer is triggered instead of GPRS Attach for clause 51.2.2.5 - Initiation of the packet access procedure / Request Reference - Rel-4	Nokia	Approved
GP-022329	CR 51.010-1-1013 Uplink data transfer is triggered instead of GPRS Attach for clause 51.2.3.1 - Two-message assignment / Successful case - Rel-4	Nokia	Approved
GP-022330	CR 51.010-1-1014 Removal of clause 51.2.4.2 - Single block packet access / Packet Measurement Report. - Rel-4	Nokia	Approved
GP-022331	CR 51.010-1-1015 Removal of clause 51.3.5.1 - PDCH Release / Without TIMESLOTS_AVAILABLE. - Rel-4	Nokia	Approved
GP-022332	CR 51.010-1-1016 Correction of Initial Conditions for clause 52.1.1.5 - EGPRS Packet Channel Request / Access type - Rel-4	Nokia	Approved
GP-022333	CR 51.010-1-1017 Clarification of the MS multislot class to be used for clause 52.1.2.2.5.1 - Packet Downlink Assignment / Abnormal cases / Incorrect PDCH assignment - Rel-4	Nokia	Approved
GP-022334	CR 51.010-1-1018 Clarification of the MS multislot class to be used for clause 52.3.1.1.8 - Dynamic Allocation / Uplink Transfer / Normal / Two uplink timeslots - Rel-4	Nokia	Approved
GP-022335	CR 51.010-1-1019 Correction of PRE_EMPTIVE TRANSMISSION IE for clause 52.3.4 - Default message contents. - Rel-4	Nokia	Approved
GP-022336	CR 51.010-1-1020 Removal of clause 52.1.2.2.3 - Packet Downlink Assignment / Frequency hopping. - Rel-4	Nokia	Approved
GP-022337	CR 51.010-1-1021 Removal of clause 52.3.1.1.9 - Dynamic Allocation / Uplink Transfer / Normal / Frequency parameters. - Rel-4	Nokia	Approved
GP-022338	CR 51.010-1-1022 Removal of clause 52.3.1.2.1 - Dynamic Allocation / Uplink Transfer / Abnormal / with random access. - Rel-4	Nokia	Approved
GP-022339	CR 51.010-1-1023 Clarification of of the NC used in the PACKET CELL CHANGE ORDER in the Expected Sequence for clause 52.4.2.1.1 - Cell change order procedure / Uplink transfer / Normal case - Rel-4	Nokia	Approved
GP-022340	CR 51.010-1-1024 Correction of Test Purpose and Expected Sequence for clause 52.4.2.2.1 - Cell change order procedure / Downlink transfer / Normal case - Rel-4	Nokia	Approved
GP-022341	CR 51.010-1-1025 Various corrections in the Expected Sequence for clause 52.4.2.3.1 - Cell change order procedure / Simultaneous uplink and downlink transfer / Normal case - Rel-4	Nokia	Withdrawn
GP-022343	CR 51.010-1-1026 Correction of Test Purpose, Test Procedure and Expected Sequence for clause 26.7.5.7.2 - MM connection / abortion by the network / cause not equal to #6 - Rel-4	Nokia	Approved
GP-022344	CR 51.010-1-1027 Correction of Step 36 of the Expected Sequence for clause 44.2.3.2.3 - Combined routing area updating / RA only accepted - Rel-4	Nokia	Approved
GP-022346	CR 51.010-1-1028 Test cases 20.22.6 - Cell reselection timings	Alcatel	Withdrawn
GP-022368	CR 51.010-1-1029 TC 41.4.2.3 Immediate Assignment / Use of DCCH for Downlink TBF Establishment	Mitsubishi	Withdrawn
GP-022369	CR 51.010-1-1030 TC 41.4.3.2 Removal of TC 41.4.3.2 RR commands while on DCCH / Handover	Mitsubishi	Withdrawn

Tdoc	Title	Source	Status
GP-022371	CR 51.010-1-1031 TC 41.4.3.3.1 PDCH Assignment Command /Successful case	Mitsubishi	Withdrawn
GP-022372	CR 51.010-1-1032 TC 41.4.3.3.2 PDCH Assignment Command / Failure / T3190 expires	Mitsubishi	Withdrawn
GP-022373	CR 51.010-1-1033 TC 41.4.3.4.5 Cell change order / Failure / T3134 expiry	Mitsubishi	Withdrawn
GP-022374	CR 51.010-1-1034 TC 41.4.3.5 RR commands while on CR DCCH / Release	Mitsubishi	Withdrawn
GP-022375	CR 51.010-1-1035 TC 41.4.3.6 RR commands while on DCCH / Radio link failure	Mitsubishi	Withdrawn
GP-022603	CR 51.010-1-1036 rev 1 TC 42.2.2.6.4 Fixed Allocation / Uplink Transfer / MS requests new resources/ T3168/Stop with Packet Access Reject	Mitsubishi	Approved
GP-022376	CR 51.010-1-1036 TC 42.2.2.6.4 Fixed Allocation / Uplink Transfer / MS requests new resources/ T3168/Stop with Packet Access Reject	Mitsubishi	Revised
GP-022410	CR 51.010-1-1037 41.3.5.2 needs to be reworked according to dynamic allocation assignment	Setcom	Withdrawn
GP-022411	CR 51.010-1-1038 42.1.2.1.12- wrong PSI Count High Rate and PSI1 repeat period were used	Setcom	Revised
GP-022611	CR 51.010-1-1038 rev 1 42.1.2.1.12- wrong PSI Count High Rate and PSI1 repeat period were used	Setcom	Revised
GP-022615	CR 51.010-1-1038 rev 2 42.1.2.1.12- wrong PSI Count High Rate and PSI1 repeat period were used	Setcom	Approved
GP-022412	CR 51.010-1-1039 43.1.1.6 – optional retransmission of BSN=0 after step 15 due to allowed reaction time of MS	Setcom	Revised
GP-022613	CR 51.010-1-1039 rev 1 43.1.1.6 - optional retransmission of BSN=0 after step 15 due to allowed reaction time of MS	Setcom	Approved
GP-022413	CR 51.010-1-1040 41.2.8.2 – TBF starting time in IMMEDIATE_ASSIGNMENT	Setcom	Approved
GP-022414	CR 51.010-1-1041 42.2.4.1.2 PCA does not contain Channel Request Description IE	Setcom	Approved
GP-022415	CR 51.010-1-1042 Test cases 46.2.2.1.4 – Modification of the amount of uplink data to transfer	Setcom	Withdrawn
GP-022416	CR 51.010-1-1043 Correction to section 44.2.3.2.7 – Combined routing area updating / abnormal cases / attempt counter check / procedure timeout	Setcom	Revised
GP-022690	CR 51.010-1-1043 rev 1 Correction to section 44.2.3.2.7 – Combined routing area updating / abnormal cases / attempt counter check / procedure timeout	Setcom	Approved
GP-022422	CR 51.010-1-1044 Basic Self Location Test case for Assisted GPS	Qualcomm	Revised
GP-022685	CR 51.010-1-1044 rev 1 Basic Self Location Test case for Assisted GPS	Qualcomm	Approved
GP-022423	CR 51.010-1-1045 Corrections to NI-LR and MT-LR Assisted GPS test cases	Qualcomm	Approved
GP-022426	CR 51.010-1-1046 Removal of TBF establishment via DCCH in section 42.4.2 and 42.4.3	Siemens	Revised
GP-022601	CR 51.010-1-1046 rev 1 Removal of TBF establishment via DCCH in section 42.4.2 and 42.4.3	Siemens	Approved
GP-022432	CR 51.010-1-1047 Sec 53.1.2 Correction to Window Size used in the DL TBF Establishment Macro.	Setcom	Approved
GP-022433	CR 51.010-1-1048 TC 53.1.2.13 Modify the corruption method used in the testcase.	Setcom	Withdrawn
GP-022434	CR 51.010-1-1049 TC 53.1.1.15 Changes to Coding Scheme used, BSN sequence and addition of optional steps.	Setcom	Revised
GP-022737	CR 51.010-1-1049 rev 1 TC 53.1.1.15 Changes to Coding Scheme used, BSN sequence and addition of optional steps.	Setcom	Approved
GP-022435	CR 51.010-1-1050 TC 51.3.5.2 Changes to applicability of test steps and addition of DI Dummy Control Blocks.	Setcom	Withdrawn

Tdoc	Title	Source	Status
GP-022436	CR 51.010-1-1051 TC 51.2.3.9 Addition of optional steps to cater to different MS behaviour.	Setcom	Approved
GP-022437	CR 51.010-1-1052 TC 53.1.1.8 Change to number of octets used in testcase.	Setcom	Approved
GP-022438	CR 51.010-1-1053 TC 52.3.1.1.5 Addition of optional steps to cater to MS reaction time.	Setcom	Withdrawn
GP-022439	CR 51.010-1-1054 TC 53.1.1.10 Change to number of octets used in testcase.	Setcom	Revised
GP-022614	CR 51.010-1-1054 rev 1 TC 53.1.1.10 Change to number of octets used in testcase.	Setcom	Approved
GP-022440	CR 51.010-1-1055 TC 53.1.1.17 Addition of optional steps to cater to MS reaction time.	Setcom	Approved
GP-022441	CR 51.010-1-1056 TC 53.1.1.12 Addition of optional steps to cater to MS reaction time.	Setcom	Approved
GP-022442	CR 51.010-1-1057 TC 53.1.1.2 Addition of optional steps to cater to MS reaction time.	Setcom	Withdrawn
GP-022443	CR 51.010-1-1058 TC 52.3.2.1.1 Correction in teststep 12 to denote Packet Timeslot reconfigure.	Setcom	Withdrawn
GP-022444	CR 51.010-1-1059 TC 53.1.2.3 Use Packet DI Assignment instead of Packet Timeslot Reconfigure in testcase.	Setcom	Withdrawn
GP-022445	CR 51.010-1-1060 TC 53.1.2.4 Use Packet DI Assignment instead of Packet Timeslot Reconfigure in testcase.	Setcom	Withdrawn
GP-022470	CR 51.010-1-1061 Revision of references and conformance for E-OTD MT-LR test case	Ericsson	Approved
GP-022472	CR 51.010-1-1062 Clause 70.3 - EOTD MOLR	Motorola	Revised
GP-022686	CR 51.010-1-1062 rev 1 Clause 70.3 - EOTD MOLR	Motorola	Approved
GP-022474	CR 51.010-1-1063 Corrections to Section 60 2G to 3G handover test cases	Motorola	Revised
GP-022623	CR 51.010-1-1063 rev 1 Corrections to Section 60 2G to 3G handover test cases	Motorola	Approved
GP-022514	CR 51.010-1-1065 Section 14.1.5/6/7 Deletion of References to SID/ DTX in AMR Bad Frame Indication	Rohde & Schwarz	Approved
GP-022515	CR 51.010-1-1066 Section 53.1.2.13 Acknowledged Mode/ Downlink TBF/ IR Operation	Rohde & Schwarz	Postponed
GP-022529	CR 51.010-1-1067 Section 40 GPRS default conditions, message contents and macros	Rohde & Schwarz	Approved
GP-022560	CR 51.010-1-1068 Correction of Test Procedure and Test Requirements for clause 20.22.2 – Cell Selection in Packet Idle Mode	Nokia	Approved
GP-021301	CR 51.010-1-747 GPRS P-TMSI signature handling	TTPCOM	Revised
GP-021832	CR 51.010-1-747 rev 1 GPRS P-TMSI signature handling	TTPCOM	Approved
GP-021302	CR 51.010-1-748 TC 41.1.2 RR / Paging / on PCCCH for circuit-switched services / paging successful	Siemens	Approved
GP-021303	CR 51.010-1-749 Sec. TC 41.1.5.1.2 RR / Paging / on CCCH for GPRS service / normal paging with IMSI successful	Siemens	Withdrawn
GP-021304	CR 51.010-1-750 Sec. TC 41.4.3.4.7 Contention resolution failure / GPRS supported using PBCCH / Timer or counter expiry	Siemens	Approved
GP-021305	CR 51.010-1-751 Sec. TC 41.4.3.4.8 Contention resolution failure / GPRS supported using PBCCH / TLLI mismatch	Siemens	Approved
GP-021306	CR 51.010-1-752 Sec. TC 42.1.1.2 Packet Channel Request / Response to Packet Paging	Siemens	Revised
GP-021872	CR 51.010-1-752 rev 1 Sec. TC 42.1.1.2 Packet Channel Request / Response to Packet Paging	Siemens	Approved
GP-021307	CR 51.010-1-753 Sec. TC 51.1.5.1.2 RR / Paging / on CCCH for EGPRS service / normal paging with IMSI successful	Siemens	Withdrawn
GP-021308	CR 51.010-1-754 Test case 26.16.4: Correction of expected sequence	7Layers	Withdrawn
GP-021310	CR 51.010-1-755 Error in TC 44.2.3.1.2	7Layers	Withdrawn
GP-021327	CR 51.010-1-756 Sec. TC 41.2.3.2 Two-message assignment / Failure cases	Siemens	Revised



Tdoc	Title	Source	Status
GP-021861	CR 51.010-1-756 rev 1 Sec. TC 41.2.3.2 Two-message assignment / Failure cases	Siemens	Approved
GP-021328	CR 51.010-1-757 Sec. TC 51.2.3.2 Two-message assignment / Failure cases	Siemens	Revised
GP-021862	CR 51.010-1-757 rev 1 Sec. TC 51.2.3.2 Two-message assignment / Failure cases	Siemens	Approved
GP-021331	CR 51.010-1-758 14.16.1 - Minimum Input Level for Reference Performance, USF/CS-1 and USF/CS-2 to 4	Ericsson	Approved
GP-021334	CR 51.010-1-759 42.5.1.1 – relative starting time	Setcom	Revised
GP-021873	CR 51.010-1-759 rev 1 42.5.1.1 - relative starting time	Setcom	Approved
GP-021335	CR 51.010-1-760 41.1.5.4 - System information Type 13 contents	Setcom	Approved
GP-021336	CR 51.010-1-761 41.2.1.1 – priority level in the range 1 to 4	Setcom	Approved
GP-021337	CR 51.010-1-762 41.2.3.8 - time between two successive access attempts	Setcom	Revised
GP-021863	CR 51.010-1-762 rev 1 41.2.3.8 - time between two successive access attempts	Setcom	Approved
GP-021338	CR 51.010-1-763 41.2.3.9 – PACKET RESOURCE REQUEST will not be sent in dynamic allocation	Setcom	Revised
GP-021864	CR 51.010-1-763 rev 1 41.2.3.9 - PACKET RESOURCE REQUEST will not be sent in dynamic allocation	Setcom	Approved
GP-021339	CR 51.010-1-764 43.1.2.3 – correct numbering of steps	Setcom	Revised
GP-021944	CR 51.010-1-764 rev 1 43.1.2.3 - correct numbering of steps	Setcom	Approved
GP-021340	CR 51.010-1-765 Correction made over section 42.2.x	Setcom	Revised
GP-021874	CR 51.010-1-765 rev 1 Correction made over section 42.2.x	Setcom	Approved
GP-021341	CR 51.010-1-766 Addition of a conditional step in the Inter-SGSN Routing Area Update Procedure (section 40).	Setcom	Revised
GP-021848	CR 51.010-1-766 rev 1 Addition of a conditional step in the Inter-SGSN Routing Area Update Procedure (section 40).	Setcom	Approved
GP-021342	CR 51.010-1-767 Ciphering should be enabled in Test case 46.1.2.7.6.	Setcom	Revised
GP-021850	CR 51.010-1-767 rev 1 Ciphering should be enabled in Test case 46.1.2.7.6.	Setcom	Approved
GP-021343	CR 51.010-1-768 Wrong N-PDU numbering in testcase 46.2.2.1.4	Setcom	Approved
GP-021344	CR 51.010-1-769 Wrong N-PDU numbering in Test case 46.2.2.1.5	Setcom	Approved
GP-021345	CR 51.010-1-770 Wrong PDP Contexts in Test case 46.2.2.4.1	Setcom	Rejected
GP-021362	CR 51.010-1-771 Sec. TC 20.22.3 Priority of cells	Siemens	Revised
GP-021973	CR 51.010-1-771 rev 1 Sec. TC 20.22.3 Priority of cells	Siemens	Approved
GP-021363	CR 51.010-1-772 Sec. TC 20.22.5 Network controlled Cell re-selection in Transfer Mode	Siemens	Approved
GP-021364	CR 51.010-1-773 Sec. TC 44.2.3.2.7 Combined routing area updating /abnormal cases / attempt counter check / procedure timeout	Siemens	Approved
GP-021365	CR 51.010-1-774 AMR layer 1 tests, reference sensitivity	Cingular Wireless / Racial Instruments	Postponed
GP-021366	CR 51.010-1-775 AMR layer 1 tests, adjacent channel rejection	Cingular Wireless / Racial Instruments	Postponed
GP-022279	CR 51.010-1-775 rev 1 AMR layer 1 tests, adjacent channel rejection	Cingular Wireless / Racial Instruments	Revised
GP-022733	CR 51.010-1-775 rev 2 AMR layer 1 tests, adjacent channel rejection	Cingular Wireless / Racial Instruments	Approved
GP-021367	CR 51.010-1-776 AMR layer 1 tests, co-channel rejection	Cingular Wireless / Racial Instruments	Postponed
GP-021368	CR 51.010-1-777 AMR layer 3 tests, MO late assignment no ICM	Cingular Wireless / Racial Instruments	Rejected
GP-022280	CR 51.010-1-777 rev 1 AMR layer 3 tests, MO late assignment no ICM	Cingular Wireless / Racial Instruments	Revised
GP-022630	CR 51.010-1-777 rev 2 AMR layer 3 tests, MO late assignment no ICM	Cingular Wireless / Racial Instruments	Approved
GP-021369	CR 51.010-1-778 AMR layer 3 tests, handover failure	Cingular Wireless / Racial Instruments	Rejected

Tdoc	Title	Source	Status
GP-022281	CR 51.010-1-778 rev 1 AMR layer 3 tests, handover failure	Cingular Wireless / Racal Instruments	Revised
GP-022626	CR 51.010-1-778 rev 2 AMR layer 3 tests, handover failure	Cingular Wireless / Racal Instruments	Revised
GP-022748	CR 51.010-1-778 rev 3 AMR layer 3 tests, handover failure	Cingular Wireless / Racal Instruments	Approved
GP-021370	CR 51.010-1-779 AMR layer 3 tests, MT early assignment specified ICM	Cingular Wireless / Racal Instruments	Rejected
GP-022282	CR 51.010-1-779 rev 1 AMR layer 3 tests, MT early assignment specified ICM	Cingular Wireless / Racal Instruments	Revised
GP-022629	CR 51.010-1-779 rev 2 AMR layer 3 tests, MT early assignment specified ICM	Cingular Wireless / Racal Instruments	Approved
GP-021371	CR 51.010-1-780 AMR layer 3 tests, channel mode modify	Cingular Wireless / Racal Instruments	Rejected
GP-022283	CR 51.010-1-780 rev 1 AMR layer 3 tests, channel mode modify	Cingular Wireless / Racal Instruments	Revised
GP-022634	CR 51.010-1-780 rev 2 AMR layer 3 tests, channel mode modify	Cingular Wireless / Racal Instruments	Approved
GP-021372	CR 51.010-1-781 AMR layer 3 tests, handover success, additional cases	Cingular Wireless / Racal Instruments	Approved
GP-021373	CR 51.010-1-782 AMR RATSCCH tests, successful cases	Cingular Wireless / Racal Instruments	Withdrawn
GP-021377	CR 51.010-1-783 Corrections in section 26.x about "PLMN_permitted" parameter	Alcatel	Withdrawn
GP-021378	CR 51.010-1-784 Test case 44.2.3.1.7 : Routing area updating /abnormal cases / change of cell during routing area updating procedure	Alcatel	Withdrawn
GP-021379	CR 51.010-1-785 RRLP Measure Position Response Message Content for clause 70.7.1.1	Qualcomm	Revised
GP-021843	CR 51.010-1-785 rev 1 RRLP Measure Position Response Message Content for clause 70.7.1.1	Qualcomm	Approved
GP-021380	CR 51.010-1-786 RRLP Measure Position Response Message Content for clause 70.7.1.2	Qualcomm	Revised
GP-021844	CR 51.010-1-786 rev 1 RRLP Measure Position Response Message Content for clause 70.7.1.2	Qualcomm	Approved
GP-021381	CR 51.010-1-787 RRLP Measure Position Response Message Content for clause 70.7.3.1	Qualcomm	Revised
GP-021845	CR 51.010-1-787 rev 1 RRLP Measure Position Response Message Content for clause 70.7.3.1	Qualcomm	Approved
GP-021382	CR 51.010-1-788 RRLP Measure Position Response Message Content for clause 70.7.3.2	Qualcomm	Revised
GP-021846	CR 51.010-1-788 rev 1 RRLP Measure Position Response Message Content for clause 70.7.3.2	Qualcomm	Approved
GP-021383	CR 51.010-1-789 RRLP Measure Position Request Message Content for clause 70.7.1.2	Qualcomm	Approved
GP-021384	CR 51.010-1-790 RRLP Measure Position Request Message Content for clause 70.7.3.2	Qualcomm	Approved
GP-021385	CR 51.010-1-791 LCS Classmark Interrogation test case correction for mobile supporting MS-Assisted A-GPS	Qualcomm	Withdrawn
GP-021386	CR 51.010-1-792 NI LCS test case correction for Emergency Call on an SDCCH for MS-Based A-GPS	Qualcomm	Approved
GP-021387	CR 51.010-1-793 NI LCS test case correction for Emergency Call on an SDCCH for MS-Assisted A-GPS	Qualcomm	Approved
GP-021388	CR 51.010-1-794 On default conditions during LCS tests	Qualcomm	Approved
GP-021395	CR 51.010-1-795 Only one cell is needed in 42.4.2.1.6	Setcom	Approved
GP-021396	CR 51.010-1-796 Only one cell is needed in 42.4.2.2.3	Setcom	Approved
GP-021397	CR 51.010-1-797 correction to testcase 42.3.2.1.2	Setcom	Approved
GP-021398	CR 51.010-1-798 T3198 is not respected in testcase 41.3.1.1	Setcom	Withdrawn

Tdoc	Title	Source	Status
GP-021399	CR 51.010-1-799 Correction to sections 44.2.2.2.5; 44.2.3.2.4; 44.2.3.2.5.3.1	Setcom	Approved
GP-021407	CR 51.010-1-800 Correction to applicability of test step in 44.2.2.2.5 - GPRS detach / rejected / location area not allowed	Panasonic	Withdrawn
GP-021485	CR 51.010-1-801 Section 42.1.2.2.3 - Correct ARFCN allocation to allow for revised defaults	Anite	Withdrawn
GP-021495	CR 51.010-1-802 TC 41.3.1.1 TBF Release / Uplink / Normal / MS initiated / Acknowledged mode	Mitsubishi	Revised
GP-021867	CR 51.010-1-802 rev 1 TC 41.3.1.1 TBF Release / Uplink / Normal / MS initiated / Acknowledged mode	Mitsubishi	Approved
GP-021496	CR 51.010-1-803 TC 42.1.2.2.1 Packet Downlink Assignment / Response to poll bit	Mitsubishi	Revised
GP-021959	CR 51.010-1-803 rev 1 TC 42.1.2.2.1 Packet Downlink Assignment / Response to poll bit	Mitsubishi	Approved
GP-021497	CR 51.010-1-804 TC 44.2.2.1.8 GPRS detach / abnormal cases / change of cell into new routing area	Mitsubishi	Approved
GP-021498	CR 51.010-1-805 TC 44.2.3.2.5 Combined routing area updating / rejected / roaming not allowed in this location area	Mitsubishi	Revised
GP-021847	CR 51.010-1-805 rev 1 TC 44.2.3.2.5 Combined routing area updating / rejected / roaming not allowed in this location area	Mitsubishi	Approved
GP-021526	CR 51.010-1-806 Section 42.3.1.1.5 - Correct the handling of USF for uplink data	Anite	Revised
GP-021879	CR 51.010-1-806 rev 1 Section 42.3.1.1.5 - Correct the handling of USF for uplink data	Anite	Withdrawn
GP-021528	CR 51.010-1-807 Section 26.16.6 - Handling of non-supported AMR Versions	Anite	Rejected
GP-021529	CR 51.010-1-808 Section 26.16.6 - Correct direction of messages in Expected Sequence	Anite	Approved
GP-021530	CR 51.010-1-809 Section 26.16.4 - Add support for Speech HalfRate version 3	Anite	Rejected
GP-021531	CR 51.010-1-810 Section 26.16.4 - Correct direction of messages in Expected Sequence	Anite	Approved
GP-021532	CR 51.010-1-811 Section 26.16.2 - Remove generation of unnecessary Interference Signal II	Anite	Approved
GP-021533	CR 51.010-1-812 Section 26.16.1 & 26.16.2 - Replace erroneous CHANNEL RELEASE with HANDOVER COMMAND. Remove repeated steps.	Anite	Approved
GP-021534	CR 51.010-1-813 Section 26.16.1 & 26.16.2 - Replace erroneous HANDOVER COMMAND with ASSIGNMENT COMMAND.	Anite	Rejected
GP-021535	CR 51.010-1-814 Section 26.16.1 & 26.16.2 - Optional support of half rate channels	Anite	Approved
GP-021536	CR 51.010-1-815 Section 26.16.1 - Correct scope of "Expected Sequence"	Anite	Approved
GP-021537	CR 51.010-1-816 Sections 26.16.1, 26.16.2, 26.16.3, 26.16.6, 26.16.7 and 26.16.8 - Correct minor typographical errors	Anite	Approved
GP-021542	CR 51.010-1-817 GPRS Uplink Power Control - Use of a and GCH Parameters	Siemens	Revised
GP-021964	CR 51.010-1-817 rev 1 GPRS Uplink Power Control - Use of a and GCH Parameters	Siemens	Approved
GP-021560	CR 51.010-1-818 Clause 26.16 - Adaptive Multi Rate Signalling – RATSCCCH procedures	Motorola	Approved
GP-021562	CR 51.010-1-819 Correction to 46.1.2.5.2 Sending FRMR due to reception of an S frame with incorrect length	Motorola	Approved
GP-021563	CR 51.010-1-820 Correction to 41.3.1.1 TBF Release / Uplink / Normal / MS initiated / Acknowledged mode	Motorola	Revised
GP-021866	CR 51.010-1-820 rev 1 Correction to 41.3.1.1 TBF Release / Uplink / Normal / MS initiated / Acknowledged mode	Motorola	Approved
GP-021577	CR 51.010-1-821 42.1.2.1.8.1.1 Contention resolution / Inclusion of TLLI in RLC data blocks	Ericsson	Withdrawn

Tdoc	Title	Source	Status
GP-021632	CR 51.010-1-823 § 40 - GPRS default conditions, message contents and macros - further minor correction of ARFCN allocation	Anite	Approved
GP-021633	CR 51.010-1-824 § 42.1.2.1.8.1.1 - Packet Uplink Assignment / One phase access / Contention resolution / Inclusion of TLLI in RLC data blocks - correction of repeated step numbers	Anite	Revised
GP-021935	CR 51.010-1-824 rev 1 § 42.1.2.1.8.1.1 - Packet Uplink Assignment / One phase access / Contention resolution / Inclusion of TLLI in RLC data blocks - correction of repeated step numbers	Anite	Approved
GP-021634	CR 51.010-1-825 § 44.2.1.1.7 - Incorrect test on the presence of P-TMSI Signature	Anite	Withdrawn
GP-021635	CR 51.010-1-826 § 41.1.5.1.2 - Incorrect timeslot used to assign SDCCH/4 (combined with CCCH), Missing GPRS SUSPENSION REQUEST message in expected sequence and incorrect PDCH ASSIGNMENT COMMAND message.	Anite	Withdrawn
GP-021636	CR 51.010-1-827 § 41.1.5.2.1 - RR / Paging / on CCCH for GPRS service / extended paging with P-TMSI successful - add DETACH	Anite	Withdrawn
GP-021637	CR 51.010-1-828 § 43.1.1.3 - Deletion of redundant step in expected sequence	Anite	Revised
GP-021945	CR 51.010-1-828 rev 1 § 43.1.1.3 - Deletion of redundant step in expected sequence	Anite	Approved
GP-021638	CR 51.010-1-829 § 43.1.1.4 - Definition of optional step in expected sequence	Anite	Revised
GP-021947	CR 51.010-1-829 rev 1 § 43.1.1.4 - Definition of optional step in expected sequence	Anite	Approved
GP-021639	CR 51.010-1-830 § 41.3.4.2 - Correct numberig of Test Steps	Anite	Revised
GP-021868	CR 51.010-1-830 rev 1 § 41.3.4.2 - Correct numbering of Test Steps	Anite	Approved
GP-021640	CR 51.010-1-831 § 41.4.3.3.1 - Direction of Assignment	Anite	Revised
GP-021869	CR 51.010-1-831 rev 1 § 41.4.3.3.1 - Direction of Assignment	Anite	Approved
GP-021641	CR 51.010-1-832 § 41.4.3.3.2 - Replace reference to superceded T3132 with T3190	Anite	Revised
GP-021870	CR 51.010-1-832 rev 1 § 41.4.3.3.2 - Replace reference to superceded T3132 with T3190	Anite	Approved
GP-021642	CR 51.010-1-833 § 42.2.2.8.1 and 42.2.2.8.2 - Correction of response constraint	Anite	Withdrawn
GP-021643	CR 51.010-1-834 § 42.2.2.9 - Amount of uplink data increased	Anite	Revised
GP-021937	CR 51.010-1-834 rev 1 § 42.2.2.9 - Amount of uplink data increased	Anite	Approved
GP-021644	CR 51.010-1-835 § 42.3.2.2.1 - Correction of coding of MA_Bitmap Length	Anite	Revised
GP-021938	CR 51.010-1-835 rev 1 § 42.3.2.2.1 - Correction of coding of MA_Bitmap Length	Anite	Revised
GP-021975	CR 51.010-1-835 rev 2 § 42.3.2.2.1 - Correction of coding of MA_Bitmap Length	Anite	Approved
GP-021645	CR 51.010-1-836 § 42.4.2.3.2 - Correct order of Test Steps in Expected Sequence	Anite	Revised
GP-021965	CR 51.010-1-836 rev 1 § 42.4.2.3.2 - Correct order of Test Steps in Expected Sequence	Anite	Approved
GP-021646	CR 51.010-1-837 § 42.4.4.2 - Insert Test Step ATTACH COMPLETE; Insert PAGING REQUEST after timeout	Anite	Revised
GP-021940	CR 51.010-1-837 rev 1 § 42.4.4.2 - Insert Test Step ATTACH COMPLETE; Insert PAGING REQUEST after timeout	Anite	Approved
GP-021647	CR 51.010-1-838 § 42.5.5.2 - Add PACKET RESOURCE REQUEST to complete transmission of uplink data	Anite	Revised
GP-021941	CR 51.010-1-838 rev 1 § 42.5.5.2 - Add PACKET RESOURCE REQUEST to complete transmission of uplink data	Anite	Approved
GP-021648	CR 51.010-1-839 § 42.5.5.3 - Correct handling of PSI2	Anite	Revised
GP-021942	CR 51.010-1-839 rev 1 § 42.5.5.3 - Correct handling of PSI2	Anite	Approved
GP-021649	CR 51.010-1-840 § 43.1.2.3: Correction of step numbering in expected sequence	Anite	Withdrawn
GP-021650	CR 51.010-1-841 § 43.1.2.4 - Deletion of redundant step 5a	Anite	Withdrawn

Tdoc	Title	Source	Status
GP-021662	CR 51.010-1-842 Addition of test of short message type 0 Rel 5 – Withdrawn	Vodafone	Withdrawn
GP-021664	CR 51.010-1-843 Creation of TS 51.010-1 REL-5: Merging of REL-5, REL-4 and R99 and Ph2 protocol test specifications – Withdrawn	Vodafone	Withdrawn
GP-021666	CR 51.010-1-844 REL-4, Inclusion of pointer to maintained specification – Withdrawn	Vodafone	Withdrawn
GP-021675	CR 51.010-1-845 Clause 44.2.3.2.4 Combined routing area updating / rejected / PLMN not allowed	Rohde &Schwarz	Approved
GP-021676	CR 51.010-1-846 Clause 46.1.2.3.2 Collision of SABM and DISC	Rohde &Schwarz	Approved
GP-021677	CR 51.010-1-847 Clause 46.1.2.6.1 Simultaneous acknowledged and unacknowledged data transfer on the same SAPI	Rohde &Schwarz	Revised
GP-021849	CR 51.010-1-847 rev 1 Clause 46.1.2.6.1 Simultaneous acknowledged and unacknowledged data transfer on the same SAPI	Rohde &Schwarz	Revised
GP-021853	CR 51.010-1-847 rev 2 Clause 46.1.2.6.1 Simultaneous acknowledged and unacknowledged data transfer on the same SAPI	Rohde &Schwarz	Approved
GP-021727	CR 51.010-1-848 TC 52.3.1.1.4 Receive EGPRS Packet DL Ack/Nack instead of Packet DL Ack/Nack	Setcom	Approved
GP-021728	CR 51.010-1-849 TC 51.2.3.9 Correction to teststeps to align with MS behaviour for elapsed TBF starting time.	Setcom	Revised
GP-021969	CR 51.010-1-849 rev 1 TC 51.2.3.9 Correction to teststeps to align with MS behaviour for elapsed TBF starting time.	Setcom	Approved
GP-021729	CR 51.010-1-850 TC 52.3.1.1.3 Removal of using Packet Timeslot Reconfigure message for reassigning Uplink TBF parameters.	Setcom	Approved
GP-021730	CR 51.010-1-851 TC 52.5.5.3 Only one cell required for the Testcase	Setcom	Approved
GP-021731	CR 51.010-1-852 TC 52.3.3.1.1 Correction of PDP context numbers stated in the test steps.	Setcom	Approved
GP-021732	CR 51.010-1-853 TC 53.1.1.4 Correction of BSN sequence in the test step.	Setcom	Approved
GP-021733	CR 51.010-1-854 Sec 53.1.2 Correction to Window Size in the DL TBF Establishment Macro.	Setcom	Withdrawn
GP-021734	CR 51.010-1-855 TC 53.1.2.2 Correction to Timeslot assigned in DL TBF establishment Macro.	Setcom	Withdrawn
GP-021735	CR 51.010-1-856 TC 53.1.2.5 Correction to the BSNs of data blocks sent.	Setcom	Approved
GP-021736	CR 51.010-1-857 TC 53.1.2.6 Correction to the BSNs of data blocks sent.	Setcom	Approved
GP-021737	CR 51.010-1-858 TC 53.1.2.13 Correction to the corruption method adopted in the testcase.	Setcom	Withdrawn
GP-021738	CR 51.010-1-859 TC 53.1.2.7 Measurement report shall be sent in Channel Quality Report IE.	Setcom	Revised
GP-021972	CR 51.010-1-859 rev 1 TC 53.1.2.7 Measurement report shall be sent in Channel Quality Report IE.	Setcom	Approved
GP-021739	CR 51.010-1-860 TC 52.3.1.1.9 Use Packet Uplink Assignment instead of Packet Timeslot Reconfigure message.	Setcom	Approved
GP-021740	CR 51.010-1-861 TC 52.3.1.1.9 Changes to the range of frequency selected for DCS 1800 and GSM 850.	Setcom	Approved
GP-021741	CR 51.010-1-862 TC 51.1.1.4 Correction of parameter name from CONTROL_CH_REL to BS_PCC_REL.	Setcom	Revised
GP-021970	CR 51.010-1-862 rev 1 TC 51.1.1.4 Correction of parameter name from CONTROL_CH_REL to BS_PCC_REL.	Setcom	Approved
GP-021742	CR 51.010-1-863 TC 51.2.2.1 Correction to Initial conditions and Test steps to align with conformance requirement	Setcom	Rejected
GP-021726	CR 51.010-1-864 TC 52.3.1.1.2 MS Radio Access Capability shall not be present in Packet Resource Request	Setcom	Approved
GP-021762	CR 51.010-1-865 TC 53.1.1.4 Correction in testcase to use Packet Uplink Assignment instead of Packet Timeslot Reconfigure	Setcom	Approved
GP-021774	CR 51.010-1-866 Test case 15.6 GPRS Timing advance and absolute delay	Rohde & Schwarz	Approved

Tdoc	Title	Source	Status
GP-021775	CR 51.010-1-867 Section 20.22 GPRS Cell Selection and Reselection	Rohde & Schwarz	Approved
GP-021776	CR 51.010-1-868 Correction of Expected Sequence for clause 41.1.5.1.2 - RR / Paging / on CCCH for GPRS service / normal paging with IMSI successful	Nokia	Approved
GP-021777	CR 51.010-1-869 Correction to allow also Two Phase Access for clause 42.1.2.1.8.2.2 - Packet Uplink Assignment / One phase access / Timing Advance / TA Index not present	Nokia	Approved
GP-021778	CR 51.010-1-870 Correction to T3192 expiry time for clause 42.3.2.1.1 - Dynamic Allocation / Uplink Transfer with Downlink TBF establishment / Normal / Successful	Nokia	Revised
GP-021943	CR 51.010-1-870 rev 1 Correction to T3192 expiry time for clause 42.3.2.1.1 - Dynamic Allocation / Uplink Transfer with Downlink TBF establishment / Normal / Successful	Nokia	Approved
GP-021779	CR 51.010-1-871 Correction of Expected Sequence for clause 51.1.1.1 - RR / Paging / on PCCCH for EGPRS service / normal paging with P-TMSI successful	Nokia	Approved
GP-021780	CR 51.010-1-872 Correction of Expected Sequence for clause 51.1.5.1.2 - RR / Paging / on CCCH for EGPRS service / normal paging with IMSI successful	Nokia	Approved
GP-021781	CR 51.010-1-873 Correction of allowed ACCESS TYPE in Step 2 of the Expected Sequence for clause 52.1.1.2 - Packet Channel Request / Support of EGPRS PACKET CHANNEL REQUEST	Nokia	Approved
GP-021782	CR 51.010-1-874 Correction to T3192 expiry time for clause 52.3.2.1.1 - Dynamic Allocation / Uplink Transfer with Downlink TBF establishment / Normal / Successful	Nokia	Approved
GP-021800	CR 51.010-1-875 TAPS additions into 51.010, sections 00 –10	ETSI Project TETRA	Postponed
GP-021801	CR 51.010-1-876 TAPS implementation in 51.010 section 12	ETSI Project TETRA	Postponed
GP-021802	CR 51.010-1-877 TAPS additions into 51.010 section 13	ETSI Project TETRA	Postponed
GP-021803	CR 51.010-1-878 TAPS additions into 51.010 section 14	ETSI Project TETRA	Postponed
GP-021804	CR 51.010-1-879 TAPS addition into 51.010 section 17	ETSI Project TETRA	Postponed
GP-021805	CR 51.010-1-880 TAPS additions into 51.010 section 20	ETSI Project TETRA	Postponed
GP-021806	CR 51.010-1-881 TAPS additions into 51.010 section 21	ETSI Project TETRA	Postponed
GP-021807	CR 51.010-1-882 TAPS included in 51.010-1 section 26.1	ETSI Project TETRA	Postponed
GP-021808	CR 51.010-1-883 TAPS inclusion into 51.010-1 section 26.3	ETSI Project TETRA	Postponed
GP-021809	CR 51.010-1-884 TAPS inclusion into 51.010-1 section 26.5	ETSI Project TETRA	Postponed
GP-021810	CR 51.010-1-885 TAPS inclusion into 51.010-1 section 26.6	ETSI Project TETRA	Postponed
GP-021811	CR 51.010-1-886 TAPS inclusion into 51.010-1 section 26.7	ETSI Project TETRA	Postponed
GP-021812	CR 51.010-1-887 TAPS inclusion into 51.010-1 section 26.8	ETSI Project TETRA	Postponed
GP-021813	CR 51.010-1-888 TAPS inclusion into 51.010-1 section 26.9	ETSI Project TETRA	Postponed
GP-021814	CR 51.010-1-889 TAPS inclusion into 51.010-1 section 26.10	ETSI Project TETRA	Postponed
GP-021815	CR 51.010-1-890 TAPS inclusion into 51.010-1 section 26.12	ETSI Project TETRA	Postponed
GP-021816	CR 51.010-1-891 TAPS inclusion into 51.010-1 section 26.13	ETSI Project TETRA	Postponed
GP-021817	CR 51.010-1-892 TAPS inclusion into 51.010-1 section 26.14	ETSI Project TETRA	Postponed
GP-021818	CR 51.010-1-893 TAPS inclusion into 51.010-1 section 26.15	ETSI Project TETRA	Postponed
GP-021819	CR 51.010-1-894 TAPS + GSM 400 inclusion into 51.010-1 section 26.16	ETSI Project TETRA	Postponed
GP-021820	CR 51.010-1-895 TAPS inclusion into 51.010-1 section 27	ETSI Project TETRA	Postponed
GP-021821	CR 51.010-1-896 TAPS inclusion into 51.010-1 section 31	ETSI Project TETRA	Postponed
GP-021822	CR 51.010-1-897 TAPS inclusion into 51.010-1 section 34	ETSI Project TETRA	Postponed
GP-021823	CR 51.010-1-898 TAPS + GSM 400 inclusion into 51.010-1 clause 40	ETSI Project TETRA	Postponed
GP-021824	CR 51.010-1-899 TAPS + GSM 400 inclusion into 51.010-1 clause 42	ETSI Project TETRA	Postponed
GP-021949	CR 51.010-1-900 TC 51.3.1.1 TBF Release / Uplink / Normal / MS initiated / Acknowledged mode	Mitsubishi	Approved
GP-021960	CR 51.010-1-901 TC 52.1.2.2.1 Packet Downlink Assignment / Response to poll bit	Mitsubishi	Approved
GP-021877	CR 51.010-1-902 Only one cell is needed in 52.4.2.1.6	Setcom	Approved
GP-021878	CR 51.010-1-903 Only one cell is needed in 52.4.2.2.3	Setcom	Approved

Tdoc	Title	Source	Status
GP-021880	CR 51.010-1-904 correction to testcase 52.3.2.1.2	Setcom	Approved
GP-021875	CR 51.010-1-905 correction made to testcases: 42.2.4.4.1; 42.2.4.4.2 and 42.2.4.4.3	Setcom	Revised
GP-021977	CR 51.010-1-905 rev 1 correction made to testcases: 42.2.4.4.1; 42.2.4.4.2 and 42.2.4.4.3	Setcom	Approved
GP-021876	CR 51.010-1-906 Correction made to testcases 42.2.2.8.1 and 42.2.2.8.2	Setcom	Approved
GP-021936	CR 51.010-1-907 § 52.1.2.1.8.1.1 - Packet Uplink Assignment / One phase access / Contention resolution / Inclusion of TLLI in RLC data blocks - correction of repeated step numbers	Anite	Approved
GP-021939	CR 51.010-1-908 § 52.3.2.2.1 - Correction of coding of MA_Bitmap Length	Anite	Revised
GP-021976	CR 51.010-1-908 rev 1 § 52.3.2.2.1 - Correction of coding of MA_Bitmap Length	Anite	Approved
GP-021946	CR 51.010-1-909 § 53.1.1.3 - Deletion of redundant step in expected sequence	Anite	Approved
GP-021948	CR 51.010-1-910 § 53.1.1.4 - Definition of optional step in expected sequence	Anite	Withdrawn
GP-021962	CR 51.010-1-911 § 42.5.5.3 - Correct handling of PSI2	Anite	Approved
GP-021963	CR 51.010-1-912 § 41.3.4.2 - Correct numbering of Test Steps	Anite	Approved
GP-021971	CR 51.010-1-913 TC 42.3.1.1.9 Changes to the range of frequency selected for DCS 1800 and GSM 850	Setcom	Approved
GP-021974	CR 51.010-1-914 Correction to 51.3.1.1 TBF Release / Uplink / Normal / MS initiated / Acknowledged mode	Motorola	Approved
GP-021394	CR 51.010-1-915 Sec. TC 42.2.2.4 Fixed Allocation / Uplink Transfer /T3184 Expiry	Siemens	Revised
GP-021865	CR 51.010-1-915 rev 1 Sec. TC 42.2.2.4 Fixed Allocation / Uplink Transfer /T3184 Expiry	Siemens	Approved
GP-022125	CR 51.010-1-916 Addition of test of short message type 0 REL-5	Vodafone	Revised
GP-022624	CR 51.010-1-916 rev 1 Addition of test of short message type 0 REL-5	Vodafone	Approved
GP-022127	CR 51.010-1-917 Creation of TS 51.010-1 REL-5: Merging of REL-5, REL-4 and R99 and Ph2 protocol test specifications	Vodafone	Approved
GP-022129	CR 51.010-1-918 REL-4, Inclusion of pointer to maintained specification	Vodafone	Approved
GP-022135	CR 51.010-1-919 Section 44 - Corrections to GMM test cases to take into account the different implementations of a "non-auto attaching" MS	Matsushita	Revised
GP-022688	CR 51.010-1-919 rev 1 Section 44 - Corrections to GMM test cases to take into account the different implementations of a "non-auto attaching" MS	Matsushita	Approved
GP-022141	CR 51.010-1-920 AMR RATSCCH tests applicability of half rate	Cingular Wireless, Rcal Instruments	Revised
GP-022631	CR 51.010-1-920 rev 1 AMR RATSCCH tests applicability of half rate	Cingular Wireless, Rcal Instruments	Revised
GP-022749	CR 51.010-1-920 rev 2 AMR RATSCCH tests applicability of half rate	Cingular Wireless, Rcal Instruments	Revised
GP-022750	CR 51.010-1-920 rev 3 AMR RATSCCH tests applicability of half rate	Cingular Wireless, Rcal Instruments	Approved
GP-022142	CR 51.010-1-921 AMR RATSCCH expiry of REQ_Activation counter	Cingular Wireless, Rcal Instruments	Revised
GP-022632	CR 51.010-1-921 rev 1 AMR RATSCCH expiry of REQ_Activation counter	Cingular Wireless, Rcal Instruments	Approved
GP-022143	CR 51.010-1-922 AMR RATSCCH expiry of REQ_Activation counter	Cingular Wireless, Rcal Instruments	Revised
GP-022633	CR 51.010-1-922 rev 1 AMR RATSCCH expiry of REQ_Activation counter	Cingular Wireless, Rcal Instruments	Approved
GP-022144	CR 51.010-1-923 Sec. 26.16.1 Inband Signalling, Downlink Codec Adaptation	Siemens, Rcal Instruments	Approved

Tdoc	Title	Source	Status
GP-022145	CR 51.010-1-924 Sec. 42.1.2.2.2 Packet Downlink Assignment / PCCCH monitoring	Siemens	Approved
GP-022146	CR 51.010-1-925 Sec. 52.1.2.2.2 Packet Downlink Assignment / PCCCH monitoring	Siemens	Approved
GP-022147	CR 51.010-1-926 Sec. 45.5.1 Error cases	Siemens	Revised
GP-022687	CR 51.010-1-926 rev 1 Sec. 45.5.1 Error cases	Siemens	Revised
GP-022694	CR 51.010-1-926 rev 2 Sec. 45.5.1 Error cases	Siemens	Revised
GP-022697	CR 51.010-1-926 rev 3 Sec. 45.5.1 Error cases	Siemens	Revised
GP-022746	CR 51.010-1-926 rev 4 Sec. 45.5.1 Error cases	Siemens	Approved
GP-022148	CR 51.010-1-927 E-OTD Sensitivity Performance Tests	Ericsson	Approved
GP-022157	CR 51.010-1-928 42.4.2.1.1 Use of default macro; Insertion of Dummy Control Blocks	Anite Telecoms	Revised
GP-022604	CR 51.010-1-928 rev 1 42.4.2.1.1 Use of default macro; Insertion of Dummy Control Blocks	Anite Telecoms	Approved
GP-022158	CR 51.010-1-929 52.4.2.1.1 Use of default macro; Insertion of Dummy Control Blocks	Anite Telecoms	Revised
GP-022605	CR 51.010-1-929 rev 1 52.4.2.1.1 Use of default macro; Insertion of Dummy Control Blocks	Anite Telecoms	Approved
GP-022159	CR 51.010-1-930 42.4.2.3.1 Replace macro deleted from defaults, remove fixed allocation	Anite Telecoms	Revised
GP-022606	CR 51.010-1-930 rev 1 42.4.2.3.1 Replace macro deleted from defaults, remove fixed allocation	Anite Telecoms	Approved
GP-022160	CR 51.010-1-931 52.4.2.3.1 Replace macro deleted from defaults, remove fixed allocation	Anite Telecoms	Revised
GP-022607	CR 51.010-1-931 rev 1 52.4.2.3.1 Replace macro deleted from defaults, remove fixed allocation	Anite Telecoms	Approved
GP-022161	CR 51.010-1-932 44.2.5.1.2 Attach after Location Update	Anite Telecoms	Approved
GP-022162	CR 51.010-1-933 20.22 Page using IMSI when TMSI not available	Anite Telecoms	Withdrawn
GP-022163	CR 51.010-1-934 42.1.2.2.3 Conflict between RFL in TC and in section 40 defaults	Anite Telecoms	Withdrawn
GP-022164	CR 51.010-1-935 52.1.2.2.3 Conflict between RFL in TC and in section 40 defaults	Anite Telecoms	Withdrawn
GP-022165	CR 51.010-1-936 40 Current Cell ARFCN missing from BA list in SI2	Anite Telecoms	Approved
GP-022166	CR 51.010-1-937 40 Inconsistent use of BSIC in PSI3	Anite Telecoms	Approved
GP-022167	CR 51.010-1-938 52.4.3.1.1 removal of a section specific macro	Anite Telecoms	Approved
GP-022168	CR 51.010-1-939 44.2.3.1.5 Allow GPRS Suspension Request during IMSI Detach Procedure	Anite Telecoms	Approved
GP-022169	CR 51.010-1-940 42.3.1.1.5 Correct the handling of USF for uplink data	Anite Telecoms	Approved
GP-022170	CR 51.010-1-941 52.3.1.1.5 Correct the handling of USF for uplink data	Anite Telecoms	Revised
GP-022608	CR 51.010-1-941 rev 1 52.3.1.1.5 Correct the handling of USF for uplink data	Anite Telecoms	Approved
GP-022171	CR 51.010-1-942 41.4.3.6 ASSIGNMENT and HANDOVER procedure corrected	Anite Telecoms	Withdrawn
GP-022172	CR 51.010-1-943 41.4.2.3 Correction of Cell Configuration	Anite Telecoms	Withdrawn
GP-022173	CR 51.010-1-944 41.4.3.2 Deletion of Handover Reference IE	Anite Telecoms	Withdrawn
GP-022174	CR 51.010-1-945 41.4.3.4.1 Correction of test procedure and precision of parameters.	Anite Telecoms	Withdrawn
GP-022175	CR 51.010-1-946 41.4.3.4.6 Replacement of PTMSI with TLLI	Anite Telecoms	Withdrawn
GP-022176	CR 51.010-1-947 41.4.3.4.7 Changes regarding Contention Resolution	Anite Telecoms	Withdrawn
GP-022177	CR 51.010-1-948 41.4.3.4.8 SDCCH channel type corrected	Anite Telecoms	Withdrawn
GP-022178	CR 51.010-1-949 41.3.5.2 Correction of Expected Message Sequence	Anite Telecoms	Withdrawn
GP-022179	CR 51.010-1-950 42.4.1.2 Adjusting timer values and message constraints.	Anite Telecoms	Revised
GP-022609	CR 51.010-1-950 rev 1 42.4.1.2 Adjusting timer values and message constraints.	Anite Telecoms	Approved



Tdoc	Title	Source	Status
GP-022180	CR 51.010-1-951 52.4.1.2 Adjusting timer values and message constraints.	Anite Telecoms	Revised
GP-022610	CR 51.010-1-951 rev 1 52.4.1.2 Adjusting timer values and message constraints.	Anite Telecoms	Approved
GP-022181	CR 51.010-1-952 43.1.2.4 Deletion of redundant step 5a	Anite Telecoms	Revised
GP-022612	CR 51.010-1-952 rev 1 43.1.2.4 Deletion of redundant step 5a	Anite Telecoms	Approved
GP-022182	CR 51.010-1-953 53.1.2.4 Deletion of redundant step 5a	Anite Telecoms	Withdrawn
GP-022183	CR 51.010-1-954 20.22.09 Correction of Carriers that have to be monitored	Anite Telecoms	Withdrawn
GP-022184	CR 51.010-1-955 20.22.12 Correction of carrier for emergency call	Anite Telecoms	Approved
GP-022185	CR 51.010-1-956 20.22.15 Correction of RF level and step references	Anite Telecoms	Approved
GP-022186	CR 51.010-1-957 20.22.22 Correction of step references and Ready Timer	Anite Telecoms	Approved
GP-022187	CR 51.010-1-958 20.22.28 Correction of step numbering and references	Anite Telecoms	Approved
GP-022188	CR 51.010-1-959 26.16.4 Add support for speech half rate version 3	Anite Telecoms	Revised
GP-022695	CR 51.010-1-959 rev 1 26.16.4 Add support for speech half rate version 3	Anite Telecoms	Withdrawn
GP-022189	CR 51.010-1-960 26.16.5.1 Splitting the combined 1800/1900 band test cases into separate 1800 and 1900 band test cases	Anite Telecoms	Approved
GP-022190	CR 51.010-1-961 26.16.5.2 Removing the test cases with handover between 900 and 1900 bands	Anite Telecoms	Approved
GP-022191	CR 51.010-1-962 26.16.5.3 Replacing the cell parameter "900 or 1800 or 1900" and "700 or 850 or 1900" with "Frequency Band"	Anite Telecoms	Approved
GP-022192	CR 51.010-1-963 26.16.6.1 Handling of non-supported AMR versions	Anite Telecoms	Revised
GP-022696	CR 51.010-1-963 rev 1 26.16.6.1 Handling of non-supported AMR versions	Anite Telecoms	Withdrawn
GP-022198	CR 51.010-1-964 22.3 remove unnecessary constraint in initial conditions	Anite Telecoms	Revised
GP-022736	CR 51.010-1-964 rev 1 22.3 remove unnecessary constraint in initial conditions	Anite Telecoms	Withdrawn
GP-022204	CR 51.010-1-965 Revision of E-OTD Emergency Call NI-LR test case	Ericsson	Approved
GP-022263	CR 51.010-1-966 Section 20.22 GPRS Cell Selection and Reselection	Rohde & Schwarz	Revised
GP-022616	CR 51.010-1-966 rev 1 Section 20.22 GPRS Cell Selection and Reselection	Rohde & Schwarz	Approved
GP-022264	CR 51.010-1-967 Section 20.22.3 Priority of Cells	Rohde & Schwarz	Revised
GP-022617	CR 51.010-1-967 rev 1 Section 20.22.3 Priority of Cells	Rohde & Schwarz	Approved
GP-022265	CR 51.010-1-968 Section 20.22.4 Cell re-selection with cells in different routing Area	Rohde & Schwarz	Revised
GP-022618	CR 51.010-1-968 rev 1 Section 20.22.4 Cell re-selection with cells in different routing Area	Rohde & Schwarz	Approved
GP-022266	CR 51.010-1-969 Section 26.6.5.1 Handover / successful / active call / non-synchronized	Rohde & Schwarz	Approved
GP-022267	CR 51.010-1-970 Section 26.11.2.1 Multiband signalling / RR / Immediate assignment Procedure	Rohde & Schwarz	Revised
GP-022627	CR 51.010-1-970 rev 1 Section 26.11.2.1 Multiband signalling / RR / Immediate assignment Procedure	Rohde & Schwarz	Revised
GP-022628	CR 51.010-1-970 rev 2 Section 26.11.2.1 Multiband signalling / RR / Immediate assignment Procedure	Rohde & Schwarz	Approved
GP-022268	CR 51.010-1-971 Section 26.11.2.2.1 Multiband signalling / RR / Handover / successful / active call / non-synchronized	Rohde & Schwarz	Approved
GP-022269	CR 51.010-1-972 Section 26.11.3.1.2 Location updating / perodic,	Rohde & Schwarz	Withdrawn
GP-022278	CR 51.010-1-973 TTY Compatibility	7 layers	Withdrawn
GP-022284	CR 51.010-1-974 Addition of new default messages, for DTM, to section 40	Vodafone	Revised

Tdoc	Title	Source	Status
GP-022684	CR 51.010-1-974 rev 1 Addition of new default messages, for DTM, to section 40	Vodafone	Approved
GP-022285	CR 51.010-1-975 Intra frequency reallocation of CS resources / Assignment Cmd	Vodafone	Revised
GP-022637	CR 51.010-1-975 rev 1 Intra frequency reallocation of CS resources / Assignment Cmd	Vodafone	Approved
GP-022286	CR 51.010-1-976 Intra frequency reallocation of CS resources / Handover	Vodafone	Revised
GP-022622	CR 51.010-1-976 rev 1 Intra frequency reallocation of CS resources / Handover	Vodafone	Revised
GP-022638	CR 51.010-1-976 rev 2 Intra frequency reallocation of CS resources / Handover	Vodafone	Approved
GP-022287	CR 51.010-1-977 Handover to same routeing area whilst in dedicated mode & MM Ready / Completed on the main DCCH	Vodafone	Approved
GP-022288	CR 51.010-1-978 Handover to same routeing area whilst in DTM with DL TBF only	Vodafone	Revised
GP-022639	CR 51.010-1-978 rev 1 Handover to same routeing area whilst in DTM with DL TBF only	Vodafone	Approved
GP-022289	CR 51.010-1-979 Handover to same routeing area whilst in DTM with both DL & UL TBFs / Successful case	Vodafone	Revised
GP-022640	CR 51.010-1-979 rev 1 Handover to same routeing area whilst in DTM with both DL & UL TBFs / Successful case	Vodafone	Revised
GP-022698	CR 51.010-1-979 rev 2 Handover to same routeing area whilst in DTM with both DL & UL TBFs / Successful case	Vodafone	Approved
GP-022290	CR 51.010-1-980 Handover to same routeing area whilst in DTM with both DL & UL TBFs / Abnormal case / Handover Failure	Vodafone	Revised
GP-022681	CR 51.010-1-980 rev 1 Handover to same routeing area whilst in DTM with both DL & UL TBFs / Abnormal case / Handover Failure	Vodafone	Revised
GP-022699	CR 51.010-1-980 rev 2 Handover to same routeing area whilst in DTM with both DL & UL TBFs / Abnormal case / Handover Failure	Vodafone	Revised
GP-022700	CR 51.010-1-980 rev 3 Handover to same routeing area whilst in DTM with both DL & UL TBFs / Abnormal case / Handover Failure	Vodafone	Approved
GP-022291	CR 51.010-1-981 Handover to different routeing area whilst in DTM / Performed on TBFs / RAU complete before CS release	Vodafone	Revised
GP-022682	CR 51.010-1-981 rev 1 Handover to different routeing area whilst in DTM / Performed on TBFs / RAU complete before CS release	Vodafone	Approved
GP-022292	CR 51.010-1-982 Handover to different routeing area whilst in DTM / Performed on TBFs / CS release before RAU complete	Vodafone	Revised
GP-022683	CR 51.010-1-982 rev 1 Handover to different routeing area whilst in DTM / Performed on TBFs / CS release before RAU complete	Vodafone	Approved
GP-022295	CR 51.010-1-983 Uplink TBF establishment with no reallocation of CS resources / Successful case / Uplink resources assigned	Vodafone	Revised
GP-022619	CR 51.010-1-983 rev 1 Uplink TBF establishment with no reallocation of CS resources / Successful case / Uplink resources assigned	Vodafone	Approved
GP-022296	CR 51.010-1-984 Uplink TBF establishment with no reallocation of CS resources / Successful case / Downlink resources assigned	Vodafone	Revised
GP-022620	CR 51.010-1-984 rev 1 Uplink TBF establishment with no reallocation of CS resources / Successful case / Downlink resources assigned	Vodafone	Approved
GP-022297	CR 51.010-1-985 Uplink TBF establishment with no reallocation of CS resources / Abnormal cases / DTM reject	Vodafone	Revised
GP-022706	CR 51.010-1-985 rev 1 Uplink TBF establishment with no reallocation of CS resources / Abnormal cases / DTM reject	Vodafone	Approved
GP-022298	CR 51.010-1-986 Uplink TBF establishment with no reallocation of CS resources / Abnormal cases / Multislot class violation / DTM Multislot Class 1	Vodafone	Revised

Tdoc	Title	Source	Status
GP-022707	CR 51.010-1-986 rev 1 Uplink TBF establishment with no reallocation of CS resources / Abnormal cases / Multislot class violation / DTM Multislot Class 1	Vodafone	Withdrawn
GP-022299	CR 51.010-1-987 Uplink TBF establishment with no reallocation of CS resources / Abnormal cases / Multislot class violation / DTM Multislot Class 5	Vodafone	Revised
GP-022708	CR 51.010-1-987 rev 1 Uplink TBF establishment with no reallocation of CS resources / Abnormal cases / Multislot class violation / DTM Multislot Class 5	Vodafone	Withdrawn
GP-022300	CR 51.010-1-988 Uplink TBF establishment with no reallocation of CS resources / Abnormal cases / Multislot class violation / DTM Multislot Class 9	Vodafone	Revised
GP-022709	CR 51.010-1-988 rev 1 Uplink TBF establishment with no reallocation of CS resources / Abnormal cases / Multislot class violation / DTM Multislot Class 9	Vodafone	Withdrawn
GP-022301	CR 51.010-1-989 Uplink TBF establishment with no reallocation of CS resources / Abnormal cases / Assignment Command	Vodafone	Revised
GP-022710	CR 51.010-1-989 rev 1 Uplink TBF establishment with no reallocation of CS resources / Abnormal cases / Assignment Command	Vodafone	Approved
GP-022302	CR 51.010-1-990 Uplink TBF establishment with no reallocation of CS resources / Abnormal cases / Handover Command	Vodafone	Revised
GP-022711	CR 51.010-1-990 rev 1 Uplink TBF establishment with no reallocation of CS resources / Abnormal cases / Handover Command	Vodafone	Approved
GP-022303	CR 51.010-1-991 Uplink TBF establishment with no reallocation of CS resources / Abnormal cases / Channel Release	Vodafone	Revised
GP-022712	CR 51.010-1-991 rev 1 Uplink TBF establishment with no reallocation of CS resources / Abnormal cases / Channel Release	Vodafone	Approved
GP-022304	CR 51.010-1-992 Uplink TBF establishment with reallocation of CS resources / Successful case	Vodafone	Revised
GP-022713	CR 51.010-1-992 rev 1 Uplink TBF establishment with reallocation of CS resources / Successful case	Vodafone	Approved
GP-022305	CR 51.010-1-993 Uplink TBF establishment with reallocation of CS resources / Abnormal case / Assignment Failure	Vodafone	Revised
GP-022714	CR 51.010-1-993 rev 1 Uplink TBF establishment with reallocation of CS resources / Abnormal case / Assignment Failure	Vodafone	Approved
GP-022306	CR 51.010-1-994 Uplink TBF establishment with reallocation of CS resources / Abnormal case / Multislot class violation / DTM multislot class 1	Vodafone	Revised
GP-022715	CR 51.010-1-994 rev 1 Uplink TBF establishment with reallocation of CS resources / Abnormal case / Multislot class violation / DTM multislot class 1	Vodafone	Approved
GP-022307	CR 51.010-1-995 Uplink TBF establishment with reallocation of CS resources / Abnormal case / Multislot class violation / DTM multislot class 5	Vodafone	Revised
GP-022720	CR 51.010-1-995 rev 1 Uplink TBF establishment with reallocation of CS resources / Abnormal case / Multislot class violation / DTM multislot class 5	Vodafone	Approved
GP-022308	CR 51.010-1-996 Uplink TBF establishment with reallocation of CS resources / Abnormal case / Multislot class violation / DTM multislot class 9	Vodafone	Revised
GP-022721	CR 51.010-1-996 rev 1 Uplink TBF establishment with reallocation of CS resources / Abnormal case / Multislot class violation / DTM multislot class 9	Vodafone	Approved
GP-022309	CR 51.010-1-997 Uplink TBF establishment required whilst in DM / DTM not supported in cell	Vodafone	Revised
GP-022722	CR 51.010-1-997 rev 1 Uplink TBF establishment required whilst DTM is not supported in cell	Vodafone	Approved

Tdoc	Title	Source	Status
GP-022310	CR 51.010-1-998 Downlink TBF establishment in Ready State / Successful case	Vodafone	Revised
GP-022723	CR 51.010-1-998 rev 1 Downlink TBF establishment in Ready State / Successful case	Vodafone	Approved
GP-022311	CR 51.010-1-999 Downlink TBF establishment in Ready State / Abnormal cases / No cell allocation available	Vodafone	Revised
GP-022724	CR 51.010-1-999 rev 1 Downlink TBF establishment in Ready State / Abnormal cases / No cell allocation available	Vodafone	Approved
GP-021309	CR 51.010-2-059 Applicability Table B.1: Correction of various stati for SMS tests	Vodafone	Revised
GP-021840	CR 51.010-2-059 rev 1 Applicability Table B.1: Correction of various stati for SMS tests	Vodafone	Approved
GP-021347	CR 51.010-2-060 Modification of Applicability Table for E-OTD	Ericsson	Revised
GP-021842	CR 51.010-2-060 rev 1 Modification of Applicability Table for E-OTD	Ericsson	Approved
GP-021561	CR 51.010-2-061 Applicability table for AMR RATSCCCH test cases	Motorola	Approved
GP-021651	CR 51.010-2-062 Annex B - Renaming of testcase 41.4.3.3.2	Anite	Revised
GP-021871	CR 51.010-2-062 rev 1 Annex B - Renaming of testcase 41.4.3.3.2	Anite	Approved
GP-021663	CR 51.010-2-063 Applicability Table B.1: Addition of test of short message type 0 Rel 5 – Withdrawn	Vodafone	Withdrawn
GP-021665	CR 51.010-2-064 Creation of TS 51.010-2 REL-5: Merging of REL-5, REL-4 and R99 and ... Ph2 protocol test specifications – Withdrawn	Vodafone	Withdrawn
GP-021667	CR 51.010-2-065 REL-4, Inclusion of pointer to maintained specification – Withdrawn	Vodafone	Withdrawn
GP-022126	CR 51.010-2-066 Applicability Table B.1: Addition of test of short message type 0 REL-5	Vodafone	Revised
GP-022625	CR 51.010-2-066 rev 1 Applicability Table B.1: Addition of test of short message type 0 REL-5	Vodafone	Approved
GP-022128	CR 51.010-2-067 Creation of TS 51.010-2 REL-5: Merging of REL-5, REL-4 and R99 and ... Ph2 protocol test specifications	Vodafone	Approved
GP-022130	CR 51.010-2-068 REL-4, Inclusion of pointer to maintained specification	Vodafone	Approved
GP-022136	CR 51.010-2-069 PICS additions to section A.4.8 to better characterise non auto GPRS attach behaviour	Matsushita	Revised
GP-022689	CR 51.010-2-069 rev 1 PICS additions to section A.4.8 to better characterise non auto GPRS attach behaviour	Matsushita	Revised
GP-022747	CR 51.010-2-069 rev 2 PICS additions to section A.4.8 to better characterise non auto GPRS attach behaviour	Matsushita	Approved
GP-022149	CR 51.010-2-070 Modification of Applicability Table for E-OTD Performance Tests	Ericsson	Revised
GP-022735	CR 51.010-2-070 rev 1 Modification of Applicability Table for E-OTD Performance Tests	Ericsson	Approved
GP-022293	CR 51.010-2-071 DTM additons to the PICS proforma tables for GSM mobile stations.	Vodafone	Revised
GP-022621	CR 51.010-2-071 rev 1 DTM additons to the PICS proforma tables for GSM mobile stations.	Vodafone	Approved
GP-022294	CR 51.010-2-072 DTM additons to the test applicability tables for GSM mobile stations (WG5).	Vodafone	Approved
GP-022320	CR 51.010-2-073 DTM additons to the test applicability tables for GSM mobile stations (WG4).	Vodafone	Approved
GP-022342	CR 51.010-2-074 Removal of 5 EGPRS test cases from Annex B, Table B.1. - Rel-4	Nokia	Approved
GP-022345	CR 51.010-2-075 Correction of editorial errors in TS 51.010-2	Cetecom	Revised
GP-022693	CR 51.010-2-075 rev 1 Correction of editorial errors in TS 51.010-2	Cetecom	Approved
GP-022370	CR 51.010-2-076 Removal of TC 41.4.3.2 RR commands while on DCCH / Handover	Mitsubishi	Withdrawn
GP-022424	CR 51.010-2-077 Applicability Table Update	Qualcomm	Approved

Tdoc	Title	Source	Status
GP-022425	CR 51.010-2-078 Removal of TBF establishment via DCCH in Annex B, Table B.1	Siemens	Revised
GP-022602	CR 51.010-2-078 rev 1 Removal of TBF establishment via DCCH in Annex B, Table B.1	Siemens	Approved
GP-022449	CR 51.010-2-079 Addition of new layer 1 tests to matrix	Cingular Wireless / Racal Instruments	Revised
GP-022734	CR 51.010-2-079 rev 1 Addition of new layer 1 tests to matrix	Cingular Wireless / Racal Instruments	Approved
GP-022450	CR 51.010-2-080 Addition of new layer 3 tests to matrix	Cingular Wireless / Racal Instruments	Revised
GP-022635	CR 51.010-2-080 rev 1 Addition of new layer 3 tests to matrix	Cingular Wireless / Racal Instruments	Approved
GP-022473	CR 51.010-2-081 Applicability table for EOTD MOLR test cases	Motorola	Approved
GP-021486	CR 51.010-3-015 Sections 26.6.5.5.1, 26.6.5.5.2, 26.6.5.6, 26.6.5.7, 26.6.5.8, 26.6.5.9, 26.8.1.4.3.1, 26.10.2.4.2 - Allow Access Bursts on SACCH	Anite	Approved
GP-021487	CR 51.010-3-016 Sections 34.2.3 , 34.2.5.3 Correct guard timers	Anite	Revised
GP-021851	CR 51.010-3-016 rev 1 Sections 34.2.3 , 34.2.5.3 Correct guard timers	Anite	Approved
GP-021527	CR 51.010-3-017 Sections 26.12.2.1.14 & 26.12.2.2.15 - Suppress HalfRate testing for non-HalfRate MS	Anite	Revised
GP-021852	CR 51.010-3-017 rev 1 Sections 26.12.2.1.14 & 26.12.2.2.15 - Suppress HalfRate testing for non-HalfRate MS	Anite	Approved
GP-021481	CR 51.021-001 Clarification of output power measurement in 8-PSK (Rel 4)	Ericsson	Approved
GP-021687	CR 51.021-002 AMR AHS7.4 static channel performance correction (Rel 4)	Alcatel	Withdrawn
GP-021956	CR 51.021-003 Alignment of AMR inband requirement with 45.005 fro GSM 900 TCH/AFS (Rel 4)	Ericsson	Approved

\* - These CRs were conditionally approved on the condition that no Objection to the approval is raised by E-mail of the TSG GERAN reflector by Friday 6<sup>th</sup> September 2002.