



## CHANGE REQUEST

⌘ **25.433 CR 1013** ⌘ rev **-** ⌘ Current version: **5.9.0** ⌘

For **HELP** on using this form, see bottom of this page or look at the pop-up text over the ⌘ symbols.

**Proposed change affects:** UICC apps  ME  Radio Access Network  Core Network

<b>Title:</b>	⌘ Use of Communication Context id in NBAP reset		
<b>Source:</b>	⌘ RAN3		
<b>Work item code:</b>	⌘ TEI5	<b>Date:</b>	⌘ 14/07/2004
<b>Category:</b>	⌘ <b>F</b>	<b>Release:</b>	⌘ Rel-5
	<p><i>Use <u>one</u> of the following categories:</i></p> <p><b>F</b> (correction)</p> <p><b>A</b> (corresponds to a correction in an earlier release)</p> <p><b>B</b> (addition of feature),</p> <p><b>C</b> (functional modification of feature)</p> <p><b>D</b> (editorial modification)</p> <p>Detailed explanations of the above categories can be found in 3GPP <a href="#">TR 21.900</a>.</p>		<p><i>Use <u>one</u> of the following releases:</i></p> <p>2 (GSM Phase 2)</p> <p>R96 (Release 1996)</p> <p>R97 (Release 1997)</p> <p>R98 (Release 1998)</p> <p>R99 (Release 1999)</p> <p>Rel-4 (Release 4)</p> <p>Rel-5 (Release 5)</p> <p>Rel-6 (Release 6)</p>

<b>Reason for change:</b>	<p>⌘ The NodeB may not always have the CRNC communication context id when it sends a RESET REQUEST.</p> <p>In this scenario, it is possible to use Communication Control Port ID today but it may not always be necessary to reset all of these Communication Contexts depending on implementation choices. It should be possible to clear only the relevant Communication Contexts.</p> <p>Typical scenarios for the CRNC initiated reset is following a failed RL Set up or Deletion procedure, and in both these cases the CRNC Communication Context id rather than the NodeB Communication Context id should be used. Hence the use of “typically” is misleading and can lead to wrong implementations.</p>
<b>Summary of change:</b>	<p>⌘ Use of NodeB Communication Context id is allowed in NodeB initiated reset.</p> <p>Replaced the misleading word “typically”.</p> <p><u>Impact assessment towards the previous version of the specification (same release):</u></p> <p>This CR has isolated impact towards the previous version of the specification (same release).</p> <p>This CR has an impact under procedural point of view.</p> <p>The impact can be considered isolated because it only affects the NodeB initiated NBAP Reset Procedure.</p>
<b>Consequences if</b>	<p>⌘ It is not possible to clear just the relevant set of Communication Contexts for a</p>

**not approved:** NodeB initiated Reset if the NodeB does not have the CRNC Communication Context ID at the time it sends the reset.  
Misleading specifications can lead to wrong implementations.

<b>Clauses affected:</b>	⌘	8.2.19.2										
<b>Other specs affected:</b>	⌘	<table border="1"><tr><td>Y</td><td>N</td></tr><tr><td>X</td><td></td></tr><tr><td></td><td>X</td></tr><tr><td></td><td>X</td></tr></table>	Y	N	X			X		X	Other core specifications	⌘ 25.433v6.2.0CR1014
		Y	N									
		X										
	X											
	X											
	Test specifications											
	O&M Specifications											
<b>Other comments:</b>	⌘											

**How to create CRs using this form:**

Comprehensive information and tips about how to create CRs can be found at <http://www.3gpp.org/specs/CR.htm>. Below is a brief summary:

- 1) Fill out the above form. The symbols above marked ⌘ contain pop-up help information about the field that they are closest to.
- 2) Obtain the latest version for the release of the specification to which the change is proposed. Use the MS Word "revision marks" feature (also known as "track changes") when making the changes. All 3GPP specifications can be downloaded from the 3GPP server under <ftp://ftp.3gpp.org/specs/> For the latest version, look for the directory name with the latest date e.g. 2001-03 contains the specifications resulting from the March 2001 TSG meetings.
- 3) With "track changes" disabled, paste the entire CR form (use CTRL-A to select it) into the specification just in front of the clause containing the first piece of changed text. Delete those parts of the specification which are not relevant to the change request.

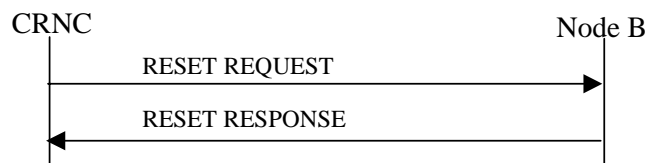
## 8.2.19 Reset

### 8.2.19.1 General

The purpose of the Reset procedure is to align the resources in the CRNC and the Node B in the event of an abnormal failure. The CRNC or the Node B may initiate the procedure.

### 8.2.19.2 Successful Operation

#### 8.2.19.2.1 Reset Initiated by the CRNC



**Figure 27A Reset procedure (CRNC to Node B), Successful Operation**

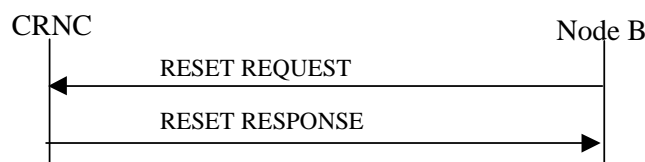
The procedure is initiated with a RESET REQUEST message sent from the CRNC to the Node B using the Node B Control Port.

If the *Reset Indicator* IE is set to "Communication Context", the Node B shall remove all the indicated Node B Communication Contexts (~~typically~~ identified by a *Node B Communication Context ID* or a *CRNC Communication Context ID* IE) and all the radio resources allocated for these Node B Communication Contexts. The Node B shall also initiate release of the user plane transport bearers that were involved in these Contexts. After clearing all related resources, the Node B shall return the RESET RESPONSE message to the CRNC.

If the *Reset Indicator* IE is set to "Communication Control Port", the Node B shall remove all the Node B Communication Contexts controlled via the indicated Communication Control Port(s) and all the radio resources allocated for these Node B Communication Contexts. The Node B shall also initiate release of the user plane transport bearers that were involved in these Contexts. After clearing all related resources, the Node B shall return the RESET RESPONSE message to the CRNC.

If the *Reset Indicator* IE is set to "Node B", the Node B shall remove all the Node B Communication Contexts within the Node B and all the radio resources allocated for these Node B Communication Contexts. The Node B shall also initiate release of the user plane transport bearers that were involved in these Contexts. After clearing all related resources, the Node B shall return the RESET RESPONSE message to the CRNC.

#### 8.2.19.2.2 Reset Initiated by the Node B



**Figure 27B Reset procedure (Node B to CRNC ), Successful Operation**

The procedure is initiated with a RESET REQUEST message sent from the Node B to the CRNC using the Node B Control Port.

If the *Reset Indicator* IE is set to "Communication Context", for all indicated CRNC Communication Contexts (indicated by a *CRNC Communication Context ID* or a *Node B Communication Context ID* IE), the CRNC shall remove the information related to this Node B and all the radio resources allocated in the CRNC. The CRNC shall also initiate release of the user plane transport bearers towards the Node B involved in the indicated CRNC Communication Contexts. After clearing all related resources, the CRNC shall return the RESET RESPONSE message to the Node B.

If the *Reset Indicator* IE is set to "Communication Control Port", for all the CRNC Communication Contexts controlled via the indicated Communication Control Port(s), the CRNC shall remove the information related to this Node B and all the radio resources allocated in the CRNC. The CRNC shall also initiate release of the user plane transport bearers towards the Node B involved in the CRNC Communication Contexts controlled via the indicated Communication Control Port(s). After clearing all related resources, the CRNC shall return the RESET RESPONSE message to Node B.

If the *Reset Indicator* IE is set to the "Node B", for all the CRNC Communication Contexts related to this Node B, the CRNC shall remove the information related to this Node B and all the radio resources allocated in the CRNC. The CRNC shall also initiate release of the user plane transport bearers towards the Node B involved in the CRNC Communication Contexts related to this Node B. After clearing all related resources, the CRNC shall return the RESET RESPONSE message to Node B.

### 8.2.19.3 Unsuccessful Operation

-

### 8.2.19.4 Abnormal Conditions

If the RESET REQUEST message is received any ongoing procedure related to a CRNC Communication Context in the CRNC or Node B Communication Context in the Node B indicated (explicitly or implicitly) in the message shall be aborted.

## CHANGE REQUEST

⌘ **25.433 CR 1014** ⌘ rev **-** ⌘ Current version: **6.2.0** ⌘

For **HELP** on using this form, see bottom of this page or look at the pop-up text over the ⌘ symbols.

**Proposed change affects:** UICC apps  ME  Radio Access Network  Core Network

<b>Title:</b>	⌘ Use of Communication Context id in NBAP reset		
<b>Source:</b>	⌘ RAN3		
<b>Work item code:</b>	⌘ TEI5	<b>Date:</b>	⌘ 14/07/2004
<b>Category:</b>	⌘ <b>A</b>	<b>Release:</b>	⌘ Rel-6
	<p>Use <u>one</u> of the following categories:</p> <p><b>F</b> (correction)</p> <p><b>A</b> (corresponds to a correction in an earlier release)</p> <p><b>B</b> (addition of feature),</p> <p><b>C</b> (functional modification of feature)</p> <p><b>D</b> (editorial modification)</p> <p>Detailed explanations of the above categories can be found in 3GPP <a href="#">TR 21.900</a>.</p>		<p>Use <u>one</u> of the following releases:</p> <p>2 (GSM Phase 2)</p> <p>R96 (Release 1996)</p> <p>R97 (Release 1997)</p> <p>R98 (Release 1998)</p> <p>R99 (Release 1999)</p> <p>Rel-4 (Release 4)</p> <p>Rel-5 (Release 5)</p> <p>Rel-6 (Release 6)</p>

<b>Reason for change:</b>	<p>⌘ The NodeB may not always have the CRNC communication context id when it sends a RESET REQUEST.</p> <p>In this scenario, it is possible to use Communication Control Port ID today but it may not always be necessary to reset all of these Communication Contexts depending on implementation choices. It should be possible to clear only the relevant Communication Contexts.</p> <p>Typical scenarios for the CRNC initiated reset is following a failed RL Set up or Deletion procedure, and in both these cases the CRNC Communication Context id rather than the NodeB Communication Context id should be used. Hence the use of “typically” is misleading and can lead to wrong implementations.</p>
<b>Summary of change:</b>	<p>⌘ Use of NodeB Communication Context id is allowed in NodeB initiated reset.</p> <p>Replaced the misleading word “typically”.</p> <p><u>Impact assessment towards the previous version of the specification (same release):</u></p> <p>This CR has isolated impact towards the previous version of the specification (same release).</p> <p>This CR has an impact under procedural point of view.</p> <p>The impact can be considered isolated because it only affects the NodeB initiated NBAP Reset Procedure.</p>
<b>Consequences if</b>	<p>⌘ It is not possible to clear just the relevant set of Communication Contexts for a</p>

**not approved:** NodeB initiated Reset if the NodeB does not have the CRNC Communication Context ID at the time it sends the reset.  
Misleading specifications can lead to wrong implementations.

**Clauses affected:** ⌘ 8.2.19.2

	Y	N		⌘
<b>Other specs affected:</b>	X		Other core specifications	25.433v5.9.0CR1013
		X	Test specifications	
		X	O&M Specifications	

**Other comments:** ⌘

**How to create CRs using this form:**

Comprehensive information and tips about how to create CRs can be found at <http://www.3gpp.org/specs/CR.htm>. Below is a brief summary:

- 1) Fill out the above form. The symbols above marked ⌘ contain pop-up help information about the field that they are closest to.
- 2) Obtain the latest version for the release of the specification to which the change is proposed. Use the MS Word "revision marks" feature (also known as "track changes") when making the changes. All 3GPP specifications can be downloaded from the 3GPP server under <ftp://ftp.3gpp.org/specs/> For the latest version, look for the directory name with the latest date e.g. 2001-03 contains the specifications resulting from the March 2001 TSG meetings.
- 3) With "track changes" disabled, paste the entire CR form (use CTRL-A to select it) into the specification just in front of the clause containing the first piece of changed text. Delete those parts of the specification which are not relevant to the change request.

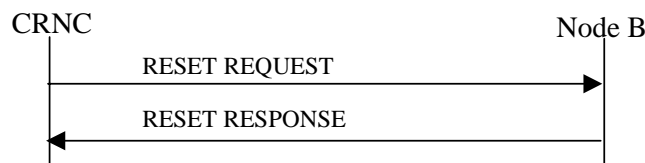
## 8.2.19 Reset

### 8.2.19.1 General

The purpose of the Reset procedure is to align the resources in the CRNC and the Node B in the event of an abnormal failure. The CRNC or the Node B may initiate the procedure.

### 8.2.19.2 Successful Operation

#### 8.2.19.2.1 Reset Initiated by the CRNC



**Figure 27A Reset procedure (CRNC to Node B), Successful Operation**

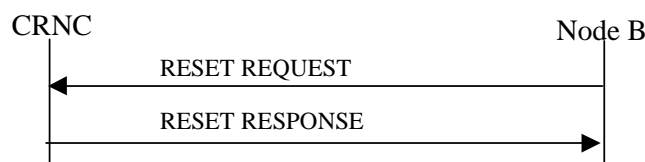
The procedure is initiated with a RESET REQUEST message sent from the CRNC to the Node B using the Node B Control Port.

If the *Reset Indicator* IE is set to "Communication Context", the Node B shall remove all the indicated Node B Communication Contexts (~~typically~~ identified by a *Node B Communication Context ID* or a *CRNC Communication Context ID* IE) and all the radio resources allocated for these Node B Communication Contexts. The Node B shall also initiate release of the user plane transport bearers that were involved in these Contexts. After clearing all related resources, the Node B shall return the RESET RESPONSE message to the CRNC.

If the *Reset Indicator* IE is set to "Communication Control Port", the Node B shall remove all the Node B Communication Contexts controlled via the indicated Communication Control Port(s) and all the radio resources allocated for these Node B Communication Contexts. The Node B shall also initiate release of the user plane transport bearers that were involved in these Contexts. After clearing all related resources, the Node B shall return the RESET RESPONSE message to the CRNC.

If the *Reset Indicator* IE is set to "Node B", the Node B shall remove all the Node B Communication Contexts within the Node B and all the radio resources allocated for these Node B Communication Contexts. The Node B shall also initiate release of the user plane transport bearers that were involved in these Contexts. After clearing all related resources, the Node B shall return the RESET RESPONSE message to the CRNC.

#### 8.2.19.2.2 Reset Initiated by the Node B



**Figure 27B Reset procedure (Node B to CRNC ), Successful Operation**

The procedure is initiated with a RESET REQUEST message sent from the Node B to the CRNC using the Node B Control Port.

If the *Reset Indicator* IE is set to "Communication Context", for all indicated CRNC Communication Contexts (indicated by a *CRNC Communication Context ID* or a *Node B Communication Context ID* IE), the CRNC shall remove the information related to this Node B and all the radio resources allocated in the CRNC. The CRNC shall also initiate release of the user plane transport bearers towards the Node B involved in the indicated CRNC Communication Contexts. After clearing all related resources, the CRNC shall return the RESET RESPONSE message to the Node B.



If the *Reset Indicator* IE is set to "Communication Control Port", for all the CRNC Communication Contexts controlled via the indicated Communication Control Port(s), the CRNC shall remove the information related to this Node B and all the radio resources allocated in the CRNC. The CRNC shall also initiate release of the user plane transport bearers towards the Node B involved in the CRNC Communication Contexts controlled via the indicated Communication Control Port(s). After clearing all related resources, the CRNC shall return the RESET RESPONSE message to Node B.

If the *Reset Indicator* IE is set to the "Node B", for all the CRNC Communication Contexts related to this Node B, the CRNC shall remove the information related to this Node B and all the radio resources allocated in the CRNC. The CRNC shall also initiate release of the user plane transport bearers towards the Node B involved in the CRNC Communication Contexts related to this Node B. After clearing all related resources, the CRNC shall return the RESET RESPONSE message to Node B.

### 8.2.19.3 Unsuccessful Operation

-

### 8.2.19.4 Abnormal Conditions

If the RESET REQUEST message is received any ongoing procedure related to a CRNC Communication Context in the CRNC or Node B Communication Context in the Node B indicated (explicitly or implicitly) in the message shall be aborted.

## CHANGE REQUEST

# 25.433 CR 1020 # rev - # Current version: 5.9.0 #

For **HELP** on using this form, see bottom of this page or look at the pop-up text over the # symbols.

**Proposed change affects:** UICC apps  ME  Radio Access Network  Core Network

<b>Title:</b>	# Re-wording of the Intra-Node B Serving HS-DSCH Radio Link Change in the Prepared Radio Link Reconfiguration procedure.		
<b>Source:</b>	# RAN3		
<b>Work item code:</b>	# HSDPA-lublur	<b>Date:</b>	# 11/08/2004
<b>Category:</b>	# <b>F</b>	<b>Release:</b>	# Rel-5
	<p>Use <u>one</u> of the following categories:</p> <p><b>F</b> (correction)</p> <p><b>A</b> (corresponds to a correction in an earlier release)</p> <p><b>B</b> (addition of feature),</p> <p><b>C</b> (functional modification of feature)</p> <p><b>D</b> (editorial modification)</p> <p>Detailed explanations of the above categories can be found in 3GPP <a href="#">TR 21.900</a>.</p>		<p>Use <u>one</u> of the following releases:</p> <p>Ph2 (GSM Phase 2)</p> <p>R96 (Release 1996)</p> <p>R97 (Release 1997)</p> <p>R98 (Release 1998)</p> <p>R99 (Release 1999)</p> <p>Rel-4 (Release 4)</p> <p>Rel-5 (Release 5)</p> <p>Rel-6 (Release 6)</p> <p>Rel-7 (Release 7)</p>

<b>Reason for change:</b>	# The current description of the Intra-Node B Serving HS-DSCH Radio Link Change implies that the Node B can release or setup RLs autonomously before receiving the message RADIO LINK COMMIT. In order to avoid misunderstanding the concerned procedure text is re-worded.
<b>Summary of change:</b>	# The text of Prepared Radio Link Reconfiguration procedure concerning the Intra-Node B Serving HS-DSCH Radio Link Change is re-worded, now stating that the Node B is allocating the resources of the new configuration.
	<p><u>Impact Analysis:</u> Impact assessment towards the previous version of the specification (same release): This CR has an isolated impact with the previous version of the specification (same release). This CR has an impact under functional point of view. The impact can be considered isolated, because the change affects one function namely the Intra-Node B Serving HS-DSCH Radio Link Change.</p>
<b>Consequences if not approved:</b>	# An ambiguous description of the Intra-Node B Serving HS-DSCH Radio Link Change will confuse the readers of the specification.

<b>Clauses affected:</b>	# 8.3.2						
<b>Other specs</b>	<table border="1" style="display: inline-table; vertical-align: middle;"> <tr> <td style="text-align: center;">Y</td> <td style="text-align: center;">N</td> </tr> <tr> <td style="text-align: center;">X</td> <td style="text-align: center;"></td> </tr> </table>	Y	N	X		Other core specifications	# CR1021 25.433 Rel-6
Y	N						
X							

**affected:**

<input checked="" type="checkbox"/>	Test specifications
<input checked="" type="checkbox"/>	O&M Specifications

**Other comments:** ☞

**How to create CRs using this form:**

Comprehensive information and tips about how to create CRs can be found at <http://www.3gpp.org/specs/CR.htm>.

Below is a brief summary:

- 1) Fill out the above form. The symbols above marked ☞ contain pop-up help information about the field that they are closest to.
- 2) Obtain the latest version for the release of the specification to which the change is proposed. Use the MS Word "revision marks" feature (also known as "track changes") when making the changes. All 3GPP specifications can be downloaded from the 3GPP server under <ftp://ftp.3gpp.org/specs/> For the latest version, look for the directory name with the latest date e.g. 2001-03 contains the specifications resulting from the March 2001 TSG meetings.
- 3) With "track changes" disabled, paste the entire CR form (use CTRL-A to select it) into the specification just in front of the clause containing the first piece of changed text. Delete those parts of the specification which are not relevant to the change request.

## 8.3.2 Synchronised Radio Link Reconfiguration Preparation

**/\* start changed section \*/**

### Intra-Node B Serving HS-DSCH Radio Link Change:

If the RADIO LINK RECONFIGURATION PREPARE message includes the *HS-PDSCH RL ID* IE, this indicates the new Serving HS-DSCH Radio Link:

- In the new configuration the Node B shall de-allocate the HS-PDSCH resources of the old Serving HS-PDSCH Radio Link and allocate the HS-PDSCH resources for the new Serving HS-PDSCH Radio Link~~release the HS-PDSCH resources on the old Serving HS-DSCH Radio Link and setup the HS-PDSCH resources on the new Serving HS-DSCH Radio Link.~~
- The Node B may include the *HARQ Memory Partitioning* IE in the [FDD – *HS-DSCH FDD Information Response* IE] [TDD – *HS-DSCH TDD Information Response* IE] in the RADIO LINK RECONFIGURATION READY message.
- [FDD – The Node B shall allocate HS-SCCH codes corresponding to the HS-DSCH and include the *HS-SCCH Specific Information Response* IE in the *HS-DSCH FDD Information Response* IE in the RADIO LINK RECONFIGURATION READY message.]
- [TDD – The Node B shall allocate HS-SCCH parameters corresponding to the HS-DSCH and include the [3.84Mcps TDD – *HS-SCCH Specific Information Response* IE] [1.28Mcps TDD – *HS-SCCH Specific Information Response LCR* IE] in the *HS-DSCH TDD Information Response* IE in the RADIO LINK RECONFIGURATION READY message.]

**/\* end changed section \*/**

## CHANGE REQUEST

# 25.433 CR 1021 # rev - # Current version: 6.2.0 #

For **HELP** on using this form, see bottom of this page or look at the pop-up text over the # symbols.

**Proposed change affects:** UICC apps  ME  Radio Access Network  Core Network

<b>Title:</b>	# Re-wording of the Intra-Node B Serving HS-DSCH Radio Link Change in the Prepared Radio Link Reconfiguration procedure.		
<b>Source:</b>	# RAN3		
<b>Work item code:</b>	# HSDPA-lublur	<b>Date:</b>	# 11/08/2004
<b>Category:</b>	# <b>A</b>	<b>Release:</b>	# Rel-6
	<p>Use <u>one</u> of the following categories:</p> <p><b>F</b> (correction)</p> <p><b>A</b> (corresponds to a correction in an earlier release)</p> <p><b>B</b> (addition of feature),</p> <p><b>C</b> (functional modification of feature)</p> <p><b>D</b> (editorial modification)</p> <p>Detailed explanations of the above categories can be found in 3GPP <a href="#">TR 21.900</a>.</p>		<p>Use <u>one</u> of the following releases:</p> <p>Ph2 (GSM Phase 2)</p> <p>R96 (Release 1996)</p> <p>R97 (Release 1997)</p> <p>R98 (Release 1998)</p> <p>R99 (Release 1999)</p> <p>Rel-4 (Release 4)</p> <p>Rel-5 (Release 5)</p> <p>Rel-6 (Release 6)</p> <p>Rel-7 (Release 7)</p>

<b>Reason for change:</b>	# The current description of the Intra-Node B Serving HS-DSCH Radio Link Change implies that the Node B can release or setup RLs autonomously before receiving the message RADIO LINK COMMIT. In order to avoid misunderstanding the concerned procedure text is re-worded.
<b>Summary of change:</b>	# The text of Prepared Radio Link Reconfiguration procedure concerning the Intra-Node B Serving HS-DSCH Radio Link Change is re-worded, now stating that the Node B is allocating the resources of the new configuration.
	<p><u>Impact Analysis:</u> Impact assessment towards the previous version of the specification (same release): This CR has an isolated impact with the previous version of the specification (same release). This CR has an impact under functional point of view. The impact can be considered isolated, because the change affects one function namely the Intra-Node B Serving HS-DSCH Radio Link Change.</p>
<b>Consequences if not approved:</b>	# An ambiguous description of the Intra-Node B Serving HS-DSCH Radio Link Change will confuse the readers of the specification.

<b>Clauses affected:</b>	# 8.3.2						
<b>Other specs</b>	<table border="1" style="display: inline-table; vertical-align: middle;"> <tr> <td style="text-align: center;">Y</td> <td style="text-align: center;">N</td> </tr> <tr> <td style="text-align: center;">X</td> <td style="text-align: center;"></td> </tr> </table>	Y	N	X		Other core specifications	# CR1020 25.433 Rel-5
Y	N						
X							

**affected:**

<input checked="" type="checkbox"/>	Test specifications
<input checked="" type="checkbox"/>	O&M Specifications

**Other comments:** ☹

### How to create CRs using this form:

Comprehensive information and tips about how to create CRs can be found at <http://www.3gpp.org/specs/CR.htm>.

Below is a brief summary:

- 1) Fill out the above form. The symbols above marked ☹ contain pop-up help information about the field that they are closest to.
- 2) Obtain the latest version for the release of the specification to which the change is proposed. Use the MS Word "revision marks" feature (also known as "track changes") when making the changes. All 3GPP specifications can be downloaded from the 3GPP server under <ftp://ftp.3gpp.org/specs/> For the latest version, look for the directory name with the latest date e.g. 2001-03 contains the specifications resulting from the March 2001 TSG meetings.
- 3) With "track changes" disabled, paste the entire CR form (use CTRL-A to select it) into the specification just in front of the clause containing the first piece of changed text. Delete those parts of the specification which are not relevant to the change request.

## 8.3.2 Synchronised Radio Link Reconfiguration Preparation

**/\* start changed section \*/**

### Intra-Node B Serving HS-DSCH Radio Link Change:

If the RADIO LINK RECONFIGURATION PREPARE message includes the *HS-PDSCH RL ID* IE, this indicates the new Serving HS-DSCH Radio Link:

- In the new configuration the Node B shall de-allocate the HS-PDSCH resources of the old Serving HS-PDSCH Radio Link and allocate the HS-PDSCH resources for the new Serving HS-PDSCH Radio Link~~release the HS-PDSCH resources on the old Serving HS-DSCH Radio Link and setup the HS-PDSCH resources on the new Serving HS-DSCH Radio Link.~~
- The Node B may include the *HARQ Memory Partitioning* IE in the [FDD – *HS-DSCH FDD Information Response* IE] [TDD – *HS-DSCH TDD Information Response* IE] in the RADIO LINK RECONFIGURATION READY message.
- [FDD – The Node B shall allocate HS-SCCH codes corresponding to the HS-DSCH and include the *HS-SCCH Specific Information Response* IE in the *HS-DSCH FDD Information Response* IE in the RADIO LINK RECONFIGURATION READY message.]
- [TDD – The Node B shall allocate HS-SCCH parameters corresponding to the HS-DSCH and include the [3.84Mcps TDD – *HS-SCCH Specific Information Response* IE] [1.28Mcps TDD – *HS-SCCH Specific Information Response LCR* IE] in the *HS-DSCH TDD Information Response* IE in the RADIO LINK RECONFIGURATION READY message.]

**/\* end changed section \*/**

## CHANGE REQUEST

# 25.433 CR 1035 # rev - # Current version: 5.9.0 #

For [HELP](#) on using this form, see bottom of this page or look at the pop-up text over the # symbols.

**Proposed change affects:** UICC apps#  ME  Radio Access Network  Core Network

<b>Title:</b>	# Correction for HSDPA IEs		
<b>Source:</b>	# RAN3		
<b>Work item code:</b>	# HSDPA-lurlub	<b>Date:</b>	# 16/8/2004
<b>Category:</b>	# <b>F</b>	<b>Release:</b>	# Rel-5
	<p>Use <u>one</u> of the following categories:</p> <p><b>F</b> (correction)</p> <p><b>A</b> (corresponds to a correction in an earlier release)</p> <p><b>B</b> (addition of feature),</p> <p><b>C</b> (functional modification of feature)</p> <p><b>D</b> (editorial modification)</p> <p>Detailed explanations of the above categories can be found in 3GPP <a href="#">TR 21.900</a>.</p>		<p>Use <u>one</u> of the following releases:</p> <p>Ph2 (GSM Phase 2)</p> <p>R96 (Release 1996)</p> <p>R97 (Release 1997)</p> <p>R98 (Release 1998)</p> <p>R99 (Release 1999)</p> <p>Rel-4 (Release 4)</p> <p>Rel-5 (Release 5)</p> <p>Rel-6 (Release 6)</p> <p>Rel-7 (Release 7)</p>

<b>Reason for change:</b>	<p># The name of IE(HS-DSCH Provided Bit Rate) in the tabular(9.2.1.21:Common Measurement Value) is not correct, HS-DSCH Provided Bit Rate Value Information is correct.</p> <p>And in current ASN.1, protocol IDs</p> <ul style="list-style-type: none"> <li>- "HS-DSCHRequiredPower" is used for HS-DSCH Required Power Value Information IE</li> <li>- "HS-DSCHProvidedBitRate" is used for HS-DSCH Provided Bit Rate Value Information IE</li> </ul> <p>The name of protocol IDs should be aligned with the name of defined IEs.</p>
<b>Summary of change:</b>	<p># - In 9.2.1.21 "HS-DSCH Provided Bit Rate" IE was corrected to "HS-DSCH Provided Bit Rate Value Information" IE</p> <p>In ASN.1, protocol IDs</p> <ul style="list-style-type: none"> <li>- "HS-DSCHRequiredPower" was redefined to "HS-DSCHRequiredPowerValueInformation"</li> <li>- "HS-DSCHProvidedBitRate" was defined to "HS-DSCHProvidedBitRateValueInformation"</li> </ul> <p><u>Impact assessment towards the previous version of the specification (same release):</u></p>



This CR has no impact with the previous version of the specification (same release) because the proposed changes are for editorial correction.

**Consequences if not approved:** ⌘ Misalignments for the name of HSDPA IE remain.

**Clauses affected:** ⌘ 9.2.1.12, 9.3.4, 9.3.6

**Other specs affected:**

Y	N
X	
	X
	X

Other core specifications ⌘ CR1036 TS25.433 v6.2.0  
Test specifications  
O&M Specifications

**Other comments:** ⌘

### How to create CRs using this form:

Comprehensive information and tips about how to create CRs can be found at <http://www.3gpp.org/specs/CR.htm>. Below is a brief summary:

- 1) Fill out the above form. The symbols above marked ⌘ contain pop-up help information about the field that they are closest to.
- 2) Obtain the latest version for the release of the specification to which the change is proposed. Use the MS Word "revision marks" feature (also known as "track changes") when making the changes. All 3GPP specifications can be downloaded from the 3GPP server under <ftp://ftp.3gpp.org/specs/>. For the latest version, look for the directory name with the latest date e.g. 2001-03 contains the specifications resulting from the March 2001 TSG meetings.
- 3) With "track changes" disabled, paste the entire CR form (use CTRL-A to select it) into the specification just in front of the clause containing the first piece of changed text. Delete those parts of the specification which are not relevant to the change request.

### 9.2.1.12 Common Measurement Value

The Common Measurement Value shall be the most recent value for this measurement, for which the reporting criteria were met.

IE/Group Name	Presence	Range	IE Type and Reference	Semantics Description	Criticality	Assigned Criticality
CHOICE <i>Common Measurement Value</i>	M				–	
> <i>Transmitted Carrier Power</i>					–	
>> <i>Transmitted Carrier Power Value</i>	M		INTEGER (0..100)	According to mapping in [22] and [23]	–	
> <i>Received Total Wide Band Power</i>					–	
>> <i>Received Total Wide Band Power Value</i>	M		INTEGER (0..621)	According to mapping in [22] and [23]	–	
> <i>Acknowledged PRACH Preambles</i>				FDD Only	–	
>> <i>Acknowledged PRACH Preamble Value</i>	M		INTEGER (0..240,...)	According to mapping in [22]	–	
> <i>UL Timeslot ISCP</i>				TDD Only	–	
>> <i>UL Timeslot ISCP</i>	M		INTEGER (0..127)	According to mapping in [23]	–	
> <i>Acknowledged PCPCH Access Preambles</i>				FDD Only	–	
>> <i>Acknowledged PCPCH Access Preambles</i>	M		INTEGER (0..15,...)	According to mapping in [22]	–	
> <i>Detected PCPCH Access Preambles</i>				FDD Only	–	
>> <i>Detected PCPCH Access Preambles</i>	M		INTEGER (0..240,...)	According to mapping in [22]	–	
> <i>Additional Common Measurement Values</i>					–	
>> <i>UTRAN GPS Timing Of Cell Frames for UE Positioning</i>					–	
>>> <i>T<sub>UTRAN-GPS</sub> Measurement Value Information</i>	M		9.2.1.64A		YES	ignore
>> <i>SFN-SFN Observed Time Difference</i>					–	
>>> <i>SFN-SFN Measurement Value Information</i>	M		9.2.1.53E		YES	ignore
>> <i>Transmitted Carrier Power Of All Codes Not Used For HS-PDSCH Or HS-SCCH Transmission</i>					–	
>>> <i>Transmitted Carrier Power Of All Codes Not Used For HS-PDSCH Or HS-SCCH Transmission Value</i>	M		INTEGER (0..100)	According to mapping in [22] and [23]	YES	ignore
>> <i>HS-DSCH Required Power</i>					–	
>>> <i>HS-DSCH Required Power Value Information</i>	M		9.2.1.31lc		YES	ignore

>>HS-DSCH Provided Bit Rate					-	
>>>HS-DSCH Provided Bit Rate <a href="#">Value Information</a>	M		9.2.1.31lb		YES	ignore

/\* partly omitted \*/

## 9.3.4 Information Elements Definitions

```
--*****  
--  
-- Information Element Definitions  
--  
--*****
```

```
NBAP-IEs {  
itu-t (0) identified-organization (4) etsi (0) mobileDomain (0)  
umts-Access (20) modules (3) nbap (2) version1 (1) nbap-IEs (2) }
```

```
DEFINITIONS AUTOMATIC TAGS ::=  
BEGIN
```

```
IMPORTS
```

```
    maxNrOfRLs,  
    maxNrOfTFCS,  
    maxNrOfErrors,  
    maxCTFC,  
    maxNrOfTFs,  
    maxTTL-count,  
    maxRateMatching,  
    maxCodeNrComp-1,  
    maxHS-PDSCHCodeNrComp-1,  
    maxHS-SCCHCodeNrComp-1,  
    maxNrOfCellSyncBursts,  
    maxNrOfCodeGroups,  
    maxNrOfMeasNCell,  
    maxNrOfMeasNCell-1,  
    maxNrOfReceptsPerSyncFrame,  
    maxNrOfTFCIGroups,  
    maxNrOfTFCI1Combs,  
    maxNrOfTFCI2Combs,  
    maxNrOfTFCI2Combs-1,  
    maxNrOfSF,  
    maxTGPS,  
    maxNrOfUSCHs,  
    maxNrOfULTSs,  
    maxNrOfULTSLCRs,  
    maxNrOfDPCHs,  
    maxNrOfDPCHLCRs,  
    maxNrOfCodes,  
    maxNrOfDSCHs,  
    maxNrOfDLTSs,  
    maxNrOfDLTSLCRs,  
    maxNrOfDCHs,  
    maxNrOfLevels,  
    maxNoGPSItems,  
    maxNoSat,  
    maxNrOfCellPortionsPerCell,
```

```
maxNrOfCellPortionsPerCell-1,
maxNrOfHSSCCHs,
maxNrOfHSSCCHCodes,
maxNrOfMACdFlows,
maxNrOfMACdFlows-1,
maxNrOfMACdPDUIndexes,
maxNrOfMACdPDUIndexes-1,
maxNrOfPriorityQueues,
maxNrOfPriorityQueues-1,
maxNrOfHARQProcesses,
maxNrOfSyncDLCodesLCR,
maxNrOfSyncFramesLCR,
maxNrOfContextsOnUeList,
maxNrOfPriorityClasses,
maxNrOfSatAlmanac-maxNoSat,

id-MessageStructure,
id-ReportCharacteristicsType-OnModification,
id-Rx-Timing-Deviation-Value-LCR,
id-SFNsFNMeasurementValueInformation,
id-SFNsFNMeasurementThresholdInformation,
id-TUTRANGPSMeasurementValueInformation,
id-TUTRANGPSMeasurementThresholdInformation,
id-TypeOfError,
id-transportlayeraddress,
id-bindingID,
id-Angle-Of-Arrival-Value-LCR,
id-SyncDLCodeIdThreInfoLCR,
id-neighbouringTDDCellMeasurementInformationLCR,
id-HS-SICH-Reception-Quality,
id-HS-SICH-Reception-Quality-Measurement-Value,
id-Initial-DL-Power-TimeslotLCR-InformationItem,
id-Maximum-DL-Power-TimeslotLCR-InformationItem,
id-Minimum-DL-Power-TimeslotLCR-InformationItem,
id-TransmittedCarrierPowerOfAllCodesNotUsedForHS-PDSCHOrHS-SCCHTransmission,
id-HS-DSCHRequiredPowerValueInformation,
id-HS-DSCHProvidedBitRateValueInformation,
id-HS-DSCHRequiredPowerValue,
id-Best-Cell-Portions-Value,
id-Unidirectional-DCH-Indicator,
id-SAT-Info-Almanac-ExtItem,
id-TnlQos
FROM NBAP-Constants

Criticality,
ProcedureID,
ProtocolIE-ID,
TransactionID,
TriggeringMessage
FROM NBAP-CommonDataTypes

NBAP-PROTOCOL-IES,
ProtocolExtensionContainer{}
```

```
ProtocolIE-Single-Container{}},
NBAP-PROTOCOL-EXTENSION
FROM NBAP-Containers;

/* partly omitted */

-- =====
-- C
-- =====

Cause ::= CHOICE {
    radioNetwork          CauseRadioNetwork,
    transport             CauseTransport,
    protocol              CauseProtocol,
    misc                  CauseMisc,
    ...
}

CauseMisc ::= ENUMERATED {
    control-processing-overload,
    hardware-failure,
    oam-intervention,
    not-enough-user-plane-processing-resources,
    unspecified,
    ...
}

CauseProtocol ::= ENUMERATED {
    transfer-syntax-error,
    abstract-syntax-error-reject,
    abstract-syntax-error-ignore-and-notify,
    message-not-compatible-with-receiver-state,
    semantic-error,
    unspecified,
    abstract-syntax-error-falsely-constructed-message,
    ...
}

CauseRadioNetwork ::= ENUMERATED {
    unknown-C-ID,
    cell-not-available,
    power-level-not-supported,
    dl-radio-resources-not-available,
    ul-radio-resources-not-available,
    rl-already-ActivatedOrAllocated,
    nodeB-Resources-unavailable,
    measurement-not-supported-for-the-object,
    combining-resources-not-available,
    requested-configuration-not-supported,
    synchronisation-failure,
    priority-transport-channel-established,
    sIB-Origination-in-Node-B-not-Supported,
    requested-tx-diversity-mode-not-supported,
```

```
    unspecified,  
    bCCH-scheduling-error,  
    measurement-temporarily-not-available,  
    invalid-CM-settings,  
    reconfiguration-CFN-not-elapsed,  
    number-of-DL-codes-not-supported,  
    s-cipch-not-supported,  
    combining-not-supported,  
    ul-sf-not-supported,  
    dl-SF-not-supported,  
    common-transport-channel-type-not-supported,  
    dedicated-transport-channel-type-not-supported,  
    downlink-shared-channel-type-not-supported,  
    uplink-shared-channel-type-not-supported,  
    cm-not-supported,  
    tx-diversity-no-longer-supported,  
    unknown-Local-Cell-ID,  
    ...,  
    number-of-UL-codes-not-supported,  
    information-temporarily-not-available,  
    information-provision-not-supported-for-the-object,  
    cell-synchronisation-not-supported,  
    cell-synchronisation-adjustment-not-supported,  
    dpc-mode-change-not-supported,  
    iPDL-already-activated,  
    iPDL-not-supported,  
    iPDL-parameters-not-available,  
    frequency-acquisition-not-supported,  
    power-balancing-status-not-compatible,  
    requested-typeofbearer-re-arrangement-not-supported,  
    signalling-Bearer-Re-arrangement-not-supported,  
    bearer-Re-arrangement-needed,  
    delayed-activation-not-supported,  
    rl-timing-adjustment-not-supported  
}
```

```
CauseTransport ::= ENUMERATED {  
    transport-resource-unavailable,  
    unspecified,  
    ...  
}
```

```
CCTrCH-ID ::= INTEGER (0..15)
```

```
CDSUBChannelNumbers ::= BIT STRING {  
    subCh11(0),  
    subCh10(1),  
    subCh9(2),  
    subCh8(3),  
    subCh7(4),  
    subCh6(5),  
    subCh5(6),  
    subCh4(7),
```



```

        subCh3(8),
        subCh2(9),
        subCh1(10),
        subCh0(11)
    } (SIZE (12))

CellParameterID ::= INTEGER (0..127,...)

CellPortionID ::= INTEGER (0..maxNrOfCellPortionsPerCell-1,...)

CellSyncBurstCode ::= INTEGER(0..7, ...)

CellSyncBurstCodeShift ::= INTEGER(0..7)

CellSyncBurstRepetitionPeriod ::= INTEGER (0..4095)

CellSyncBurstSIR ::= INTEGER (0..31)

CellSyncBurstTiming ::= CHOICE {
    initialPhase      INTEGER (0..1048575,...),
    steadyStatePhase  INTEGER (0..255,...)
}

CellSyncBurstTimingLCR ::= CHOICE {
    initialPhase      INTEGER (0..524287,...),
    steadyStatePhase  INTEGER (0..127,...)
}

CellSyncBurstTimingThreshold ::= INTEGER(0..254)

CFN ::= INTEGER (0..255)

Channel-Assignment-Indication ::= ENUMERATED {
    cA-Active,
    cA-Inactive
}

ChipOffset ::= INTEGER (0..38399)
-- Unit Chip

C-ID ::= INTEGER (0..65535)

Closedlooptimingadjustmentmode ::= ENUMERATED {
    adj-1-slot,
    adj-2-slot,
    ...
}

CommonChannelsCapacityConsumptionLaw ::= SEQUENCE (SIZE(1..maxNrOfSF)) OF
    SEQUENCE {
        dl-Cost      INTEGER (0..65535),
        ul-Cost      INTEGER (0..65535),
        iE-Extensions ProtocolExtensionContainer { { CommonChannelsCapacityConsumptionLaw-ExtIEs } }
    }
OPTIONAL,

```

```

}
...
CommonChannelsCapacityConsumptionLaw-ExtIEs NBAP-PROTOCOL-EXTENSION ::= {
}
...
CommonMeasurementAccuracy ::= CHOICE {
    tUTRANGPSMeasurementAccuracyClass    TUTRANGPSAccuracyClass,
    ...
}

CommonMeasurementType ::= ENUMERATED {
    received-total-wide-band-power,
    transmitted-carrier-power,
    acknowledged-prach-preambles,
    ul-timeslot-iscp,
    acknowledged-PCPCH-access-preambles,
    detected-PCPCH-access-preambles,
    ...,
    uTRAN-GPS-Timing-of-Cell-Frames-for-UE-Positioning,
    sFN-SFN-Observed-Time-Difference,
    transmittedCarrierPowerOfAllCodesNotUsedForHS-PDSCHOrHS-SCCHTransmission,
    hS-DSCH-Required-Power,
    hS-DSCH-Provided-Bit-Rate
}

CommonMeasurementValue ::= CHOICE {
    transmitted-carrier-power            Transmitted-Carrier-Power-Value,
    received-total-wide-band-power       Received-total-wide-band-power-Value,
    acknowledged-prach-preambles         Acknowledged-PRACH-preambles-Value,
    uL-TimeslotISCP                      UL-TimeslotISCP-Value,
    acknowledged-PCPCH-access-preambles  Acknowledged-PCPCH-access-preambles,
    detected-PCPCH-access-preambles      Detected-PCPCH-access-preambles,
    ...,
    extension-CommonMeasurementValue     Extension-CommonMeasurementValue
}

Extension-CommonMeasurementValue ::= ProtocolIE-Single-Container {{ Extension-CommonMeasurementValueIE }}

Extension-CommonMeasurementValueIE NBAP-PROTOCOL-IES ::= {
    { ID id-TUTRANGPSMeasurementValueInformation    CRITICALITY ignore TYPE TUTRANGPSMeasurementValueInformation PRESENCE mandatory }|
    { ID id-SFN-SFN-MeasurementValueInformation    CRITICALITY ignore TYPE SFN-SFN-MeasurementValueInformation PRESENCE mandatory }|
    { ID id-TransmittedCarrierPowerOfAllCodesNotUsedForHS-PDSCHOrHS-SCCHTransmission    CRITICALITY ignore TYPE TransmittedCarrierPowerOfAllCodesNotUsedForHS-PDSCHOrHS-SCCHTransmissionValue PRESENCE mandatory }|
    { ID id-HS-DSCHRequiredPowerValueInformation    CRITICALITY ignore TYPE HS-DSCHRequiredPower PRESENCE mandatory }|
    { ID id-HS-DSCHProvidedBitRateValueInformation    CRITICALITY ignore TYPE HS-DSCHProvidedBitRate PRESENCE mandatory }
}

CommonMeasurementValueInformation ::= CHOICE {
    measurementAvailable        CommonMeasurementAvailable,
    measurementnotAvailable     CommonMeasurementnotAvailable
}

```

```

}

CommonMeasurementAvailable ::= SEQUENCE {
    commonMeasurementValue      CommonMeasurementValue,
    ie-Extensions                ProtocolExtensionContainer { { CommonMeasurementAvailableItem-ExtIEs} }      OPTIONAL,
    ...
}

CommonMeasurementAvailableItem-ExtIEs NBAP-PROTOCOL-EXTENSION ::= {
    ...
}

CommonMeasurementnotAvailable ::= NULL

CommonPhysicalChannelID ::= INTEGER (0..255)

Common-PhysicalChannel-Status-Information ::= SEQUENCE {
    commonPhysicalChannelID      CommonPhysicalChannelID,
    resourceOperationalState     ResourceOperationalState,
    availabilityStatus           AvailabilityStatus,
    ie-Extensions                ProtocolExtensionContainer { { Common-PhysicalChannel-Status-Information-ExtIEs} }      OPTIONAL,
    ...
}

Common-PhysicalChannel-Status-Information-ExtIEs NBAP-PROTOCOL-EXTENSION ::= {
    ...
}

CommonTransportChannelID ::= INTEGER (0..255)

CommonTransportChannel-InformationResponse ::= SEQUENCE {
    commonTransportChannelID     CommonTransportChannelID,
    bindingID                    BindingID                    OPTIONAL,
    transportLayerAddress        TransportLayerAddress        OPTIONAL,
    ie-Extensions                ProtocolExtensionContainer { { CommonTransportChannel-InformationResponse-ExtIEs} }      OPTIONAL,
    ...
}

CommonTransportChannel-InformationResponse-ExtIEs NBAP-PROTOCOL-EXTENSION ::= {
    ...
}

Common-TransportChannel-Status-Information ::= SEQUENCE {
    commonTransportChannelID     CommonTransportChannelID,
    resourceOperationalState     ResourceOperationalState,
    availabilityStatus           AvailabilityStatus,
    ie-Extensions                ProtocolExtensionContainer { { Common-TransportChannel-Status-Information-ExtIEs} }      OPTIONAL,
    ...
}

```

```
Common-TransportChannel-Status-Information-ExtIEs NBAP-PROTOCOL-EXTENSION ::= {
    ...
}

CommunicationControlPortID ::= INTEGER (0..65535)

Compressed-Mode-Deactivation-Flag ::= ENUMERATED {
    deactivate,
    maintain-Active
}

ConfigurationGenerationID ::= INTEGER (0..255)
-- Value '0' means "No configuration"

ConstantValue ::= INTEGER (-10..10,...)
-- -10 dB - +10 dB
-- unit dB
-- step 1 dB

CPCH-Allowed-Total-Rate ::= ENUMERATED {
    v15,
    v30,
    v60,
    v120,
    v240,
    v480,
    v960,
    v1920,
    v2880,
    v3840,
    v4800,
    v5760,
    ...
}

CPCHScramblingCodeNumber ::= INTEGER (0..79)

CPCH-UL-DPCCH-SlotFormat ::= INTEGER (0..2,...)

CQI-Feedback-Cycle ::= ENUMERATED {v0, v2, v4, v8, v10, v20, v40, v80, v160,...}

CQI-Power-Offset ::= INTEGER (0..8,...)
-- According to mapping in ref. [9] subclause 4.2.1

CQI-RepetitionFactor ::= INTEGER (1..4,...)
-- Step: 1

CriticalityDiagnostics ::= SEQUENCE {
    procedureID          ProcedureID          OPTIONAL,
    triggeringMessage    TriggeringMessage    OPTIONAL,
    procedureCriticality Criticality          OPTIONAL,
}
```

```

transactionID          TransactionID          OPTIONAL,
iEsCriticalityDiagnostics CriticalityDiagnostics-IE-List OPTIONAL,
iE-Extensions          ProtocolExtensionContainer { {CriticalityDiagnostics-ExtIEs} } OPTIONAL,
...
}

CriticalityDiagnostics-ExtIEs NBAP-PROTOCOL-EXTENSION ::= {
...
}

CriticalityDiagnostics-IE-List ::= SEQUENCE (SIZE (1..maxNrOfErrors)) OF
SEQUENCE {
    iECriticality          Criticality,
    iE-ID                  ProtocolIE-ID,
    repetitionNumber      RepetitionNumber0          OPTIONAL,
    iE-Extensions          ProtocolExtensionContainer { {CriticalityDiagnostics-IE-List-ExtIEs} } OPTIONAL,
    ...
}

CriticalityDiagnostics-IE-List-ExtIEs NBAP-PROTOCOL-EXTENSION ::= {
{ ID id-MessageStructure    CRITICALITY ignore    EXTENSION MessageStructure    PRESENCE optional    }|
{ ID id-TypeOfError         CRITICALITY ignore    EXTENSION TypeOfError         PRESENCE mandatory   },
...
}

CRNC-CommunicationContextID ::= INTEGER (0..1048575)

CSBMeasurementID ::= INTEGER (0..65535)

CSBTransmissionID ::= INTEGER (0..65535)

/* partly omitted */

```

## 9.3.6 Constant Definitions

```

/* partly omitted */

-- *****
--
-- IEs
--
-- *****

id-AICH-Information          ProtocolIE-ID ::= 0
id-AICH-InformationItem-ResourceStatusInd ProtocolIE-ID ::= 1
id-BCH-Information          ProtocolIE-ID ::= 7
id-BCH-InformationItem-ResourceStatusInd ProtocolIE-ID ::= 8
id-BCCH-ModificationTime    ProtocolIE-ID ::= 9
id-BlockingPriorityIndicator ProtocolIE-ID ::= 10

```

id-Cause  
 id-CCP-InformationItem-AuditRsp  
 id-CCP-InformationList-AuditRsp  
 id-CCP-InformationItem-ResourceStatusInd  
 id-Cell-InformationItem-AuditRsp  
 id-Cell-InformationItem-ResourceStatusInd  
 id-Cell-InformationList-AuditRsp  
 id-CellParameterID  
 id-CFN  
 id-C-ID  
 id-CommonMeasurementAccuracy  
 id-CommonMeasurementObjectType-CM-Rprt  
 id-CommonMeasurementObjectType-CM-Rqst  
 id-CommonMeasurementObjectType-CM-Rsp  
 id-CommonMeasurementType  
 id-CommonPhysicalChannelID  
 id-CommonPhysicalChannelType-CTCH-SetupRqstFDD  
 id-CommonPhysicalChannelType-CTCH-SetupRqstTDD  
 id-CommunicationControlPortID  
 id-ConfigurationGenerationID  
 id-CRNC-CommunicationContextID  
 id-CriticalityDiagnostics  
 id-DCHs-to-Add-FDD  
 id-DCH-AddList-RL-ReconfPrepTDD  
 id-DCHs-to-Add-TDD  
 id-DCH-DeleteList-RL-ReconfPrepFDD  
 id-DCH-DeleteList-RL-ReconfPrepTDD  
 id-DCH-DeleteList-RL-ReconfRqstFDD  
 id-DCH-DeleteList-RL-ReconfRqstTDD  
 id-DCH-FDD-Information  
 id-DCH-TDD-Information  
 id-DCH-InformationResponse  
 id-FDD-DCHs-to-Modify  
 id-TDD-DCHs-to-Modify  
 id-DCH-ModifyList-RL-ReconfRqstTDD  
 id-DCH-RearrangeList-Bearer-RearrangeInd  
 id-DedicatedMeasurementObjectType-DM-Rprt  
 id-DedicatedMeasurementObjectType-DM-Rqst  
 id-DedicatedMeasurementObjectType-DM-Rsp  
 id-DedicatedMeasurementType  
 id-DL-CCTrCH-InformationItem-RL-SetupRqstTDD  
 id-DL-CCTrCH-InformationList-RL-AdditionRqstTDD  
 id-DL-CCTrCH-InformationList-RL-SetupRqstTDD  
 id-DL-DPCH-InformationItem-RL-AdditionRqstTDD  
 id-DL-DPCH-InformationList-RL-SetupRqstTDD  
 id-DL-DPCH-Information-RL-ReconfPrepFDD  
 id-DL-DPCH-Information-RL-ReconfRqstFDD  
 id-DL-DPCH-Information-RL-SetupRqstFDD  
 id-DL-DPCH-TimingAdjustment  
 id-DL-ReferencePowerInformationItem-DL-PC-Rqst  
 id-DLReferencePower  
 id-DLReferencePowerList-DL-PC-Rqst  
 id-DSCH-AddItem-RL-ReconfPrepFDD

ProtocolIE-ID ::= 13  
 ProtocolIE-ID ::= 14  
 ProtocolIE-ID ::= 15  
 ProtocolIE-ID ::= 16  
 ProtocolIE-ID ::= 17  
 ProtocolIE-ID ::= 18  
 ProtocolIE-ID ::= 19  
 ProtocolIE-ID ::= 23  
 ProtocolIE-ID ::= 24  
 ProtocolIE-ID ::= 25  
 ProtocolIE-ID ::= 39  
 ProtocolIE-ID ::= 31  
 ProtocolIE-ID ::= 32  
 ProtocolIE-ID ::= 33  
 ProtocolIE-ID ::= 34  
 ProtocolIE-ID ::= 35  
 ProtocolIE-ID ::= 36  
 ProtocolIE-ID ::= 37  
 ProtocolIE-ID ::= 40  
 ProtocolIE-ID ::= 43  
 ProtocolIE-ID ::= 44  
 ProtocolIE-ID ::= 45  
 ProtocolIE-ID ::= 48  
 ProtocolIE-ID ::= 49  
 ProtocolIE-ID ::= 50  
 ProtocolIE-ID ::= 52  
 ProtocolIE-ID ::= 53  
 ProtocolIE-ID ::= 54  
 ProtocolIE-ID ::= 55  
 ProtocolIE-ID ::= 56  
 ProtocolIE-ID ::= 57  
 ProtocolIE-ID ::= 59  
 ProtocolIE-ID ::= 62  
 ProtocolIE-ID ::= 63  
 ProtocolIE-ID ::= 65  
 ProtocolIE-ID ::= 135  
 ProtocolIE-ID ::= 67  
 ProtocolIE-ID ::= 68  
 ProtocolIE-ID ::= 69  
 ProtocolIE-ID ::= 70  
 ProtocolIE-ID ::= 72  
 ProtocolIE-ID ::= 73  
 ProtocolIE-ID ::= 76  
 ProtocolIE-ID ::= 77  
 ProtocolIE-ID ::= 79  
 ProtocolIE-ID ::= 81  
 ProtocolIE-ID ::= 82  
 ProtocolIE-ID ::= 83  
 ProtocolIE-ID ::= 21  
 ProtocolIE-ID ::= 84  
 ProtocolIE-ID ::= 85  
 ProtocolIE-ID ::= 86  
 ProtocolIE-ID ::= 87

id-DSCHs-to-Add-FDD  
 id-DSCH-DeleteItem-RL-ReconfPrepFDD  
 id-DSCH-DeleteList-RL-ReconfPrepFDD  
 id-DSCHs-to-Add-TDD  
 id-DSCH-Information-DeleteList-RL-ReconfPrepTDD  
 id-DSCH-Information-ModifyList-RL-ReconfPrepTDD  
 id-DSCH-InformationResponse  
 id-DSCH-FDD-Information  
 id-DSCH-TDD-Information  
 id-DSCH-ModifyItem-RL-ReconfPrepFDD  
 id-DSCH-ModifyList-RL-ReconfPrepFDD  
 id-DSCH-RearrangeList-Bearer-RearrangeInd  
 id-End-Of-Audit-Sequence-Indicator  
 id-FACH-Information  
 id-FACH-InformationItem-ResourceStatusInd  
 id-FACH-ParametersList-CTCH-ReconfRqstTDD  
 id-FACH-ParametersListIE-CTCH-SetupRqstFDD  
 id-FACH-ParametersListIE-CTCH-SetupRqstTDD  
 id-IndicationType-ResourceStatusInd  
 id-Local-Cell-ID  
 id-Local-Cell-Group-InformationItem-AuditRsp  
 id-Local-Cell-Group-InformationItem-ResourceStatusInd  
 id-Local-Cell-Group-InformationItem2-ResourceStatusInd  
 id-Local-Cell-Group-InformationList-AuditRsp  
 id-Local-Cell-InformationItem-AuditRsp  
 id-Local-Cell-InformationItem-ResourceStatusInd  
 id-Local-Cell-InformationItem2-ResourceStatusInd  
 id-Local-Cell-InformationList-AuditRsp  
 id-AdjustmentPeriod  
 id-MaxAdjustmentStep  
 id-MaximumTransmissionPower  
 id-MeasurementFilterCoefficient  
 id-MeasurementID  
 id-MessageStructure  
 id-MIB-SB-SIB-InformationList-SystemInfoUpdateRqst  
 id-NodeB-CommunicationContextID  
 id-NeighbouringCellMeasurementInformation  
 id-P-CCPCH-Information  
 id-P-CCPCH-InformationItem-ResourceStatusInd  
 id-P-CPICH-Information  
 id-P-CPICH-InformationItem-ResourceStatusInd  
 id-P-SCH-Information  
 id-PCCPCH-Information-Cell-ReconfRqstTDD  
 id-PCCPCH-Information-Cell-SetupRqstTDD  
 id-PCH-Parameters-CTCH-ReconfRqstTDD  
 id-PCH-ParametersItem-CTCH-SetupRqstFDD  
 id-PCH-ParametersItem-CTCH-SetupRqstTDD  
 id-PCH-Information  
 id-PDSCH-Information-AddListIE-PSCH-ReconfRqst  
 id-PDSCH-Information-ModifyListIE-PSCH-ReconfRqst  
 id-PDSCHSets-AddList-PSCH-ReconfRqst  
 id-PDSCHSets-DeleteList-PSCH-ReconfRqst  
 id-PDSCHSets-ModifyList-PSCH-ReconfRqst

ProtocolIE-ID ::= 89  
 ProtocolIE-ID ::= 91  
 ProtocolIE-ID ::= 93  
 ProtocolIE-ID ::= 96  
 ProtocolIE-ID ::= 98  
 ProtocolIE-ID ::= 100  
 ProtocolIE-ID ::= 105  
 ProtocolIE-ID ::= 106  
 ProtocolIE-ID ::= 107  
 ProtocolIE-ID ::= 108  
 ProtocolIE-ID ::= 112  
 ProtocolIE-ID ::= 136  
 ProtocolIE-ID ::= 113  
 ProtocolIE-ID ::= 116  
 ProtocolIE-ID ::= 117  
 ProtocolIE-ID ::= 120  
 ProtocolIE-ID ::= 121  
 ProtocolIE-ID ::= 122  
 ProtocolIE-ID ::= 123  
 ProtocolIE-ID ::= 124  
 ProtocolIE-ID ::= 2  
 ProtocolIE-ID ::= 3  
 ProtocolIE-ID ::= 4  
 ProtocolIE-ID ::= 5  
 ProtocolIE-ID ::= 125  
 ProtocolIE-ID ::= 126  
 ProtocolIE-ID ::= 127  
 ProtocolIE-ID ::= 128  
 ProtocolIE-ID ::= 129  
 ProtocolIE-ID ::= 130  
 ProtocolIE-ID ::= 131  
 ProtocolIE-ID ::= 132  
 ProtocolIE-ID ::= 133  
 ProtocolIE-ID ::= 115  
 ProtocolIE-ID ::= 134  
 ProtocolIE-ID ::= 143  
 ProtocolIE-ID ::= 455  
 ProtocolIE-ID ::= 144  
 ProtocolIE-ID ::= 145  
 ProtocolIE-ID ::= 146  
 ProtocolIE-ID ::= 147  
 ProtocolIE-ID ::= 148  
 ProtocolIE-ID ::= 150  
 ProtocolIE-ID ::= 151  
 ProtocolIE-ID ::= 155  
 ProtocolIE-ID ::= 156  
 ProtocolIE-ID ::= 157  
 ProtocolIE-ID ::= 158  
 ProtocolIE-ID ::= 161  
 ProtocolIE-ID ::= 162  
 ProtocolIE-ID ::= 163  
 ProtocolIE-ID ::= 164  
 ProtocolIE-ID ::= 165

id-PICH-Information	ProtocolIE-ID ::= 166
id-PICH-Parameters-CTCH-ReconfRqstTDD	ProtocolIE-ID ::= 168
id-PowerAdjustmentType	ProtocolIE-ID ::= 169
id-PRACH-Information	ProtocolIE-ID ::= 170
id-PrimaryCCPCH-Information-Cell-ReconfRqstFDD	ProtocolIE-ID ::= 175
id-PrimaryCCPCH-Information-Cell-SetupRqstFDD	ProtocolIE-ID ::= 176
id-PrimaryCPICH-Information-Cell-ReconfRqstFDD	ProtocolIE-ID ::= 177
id-PrimaryCPICH-Information-Cell-SetupRqstFDD	ProtocolIE-ID ::= 178
id-PrimarySCH-Information-Cell-ReconfRqstFDD	ProtocolIE-ID ::= 179
id-PrimarySCH-Information-Cell-SetupRqstFDD	ProtocolIE-ID ::= 180
id-PrimaryScramblingCode	ProtocolIE-ID ::= 181
id-SCH-Information-Cell-ReconfRqstTDD	ProtocolIE-ID ::= 183
id-SCH-Information-Cell-SetupRqstTDD	ProtocolIE-ID ::= 184
id-PUSCH-Information-AddListIE-PSCH-ReconfRqst	ProtocolIE-ID ::= 185
id-PUSCH-Information-ModifyListIE-PSCH-ReconfRqst	ProtocolIE-ID ::= 186
id-PUSCHSets-AddList-PSCH-ReconfRqst	ProtocolIE-ID ::= 187
id-PUSCHSets-DeleteList-PSCH-ReconfRqst	ProtocolIE-ID ::= 188
id-PUSCHSets-ModifyList-PSCH-ReconfRqst	ProtocolIE-ID ::= 189
id-RACH-Information	ProtocolIE-ID ::= 190
id-RACH-ParametersItem-CTCH-SetupRqstFDD	ProtocolIE-ID ::= 196
id-RACH-ParameterItem-CTCH-SetupRqstTDD	ProtocolIE-ID ::= 197
id-ReportCharacteristics	ProtocolIE-ID ::= 198
id-Reporting-Object-RL-FailureInd	ProtocolIE-ID ::= 199
id-Reporting-Object-RL-RestoreInd	ProtocolIE-ID ::= 200
id-RL-InformationItem-DM-Rprt	ProtocolIE-ID ::= 202
id-RL-InformationItem-DM-Rqst	ProtocolIE-ID ::= 203
id-RL-InformationItem-DM-Rsp	ProtocolIE-ID ::= 204
id-RL-InformationItem-RL-AdditionRqstFDD	ProtocolIE-ID ::= 205
id-RL-informationItem-RL-DeletionRqst	ProtocolIE-ID ::= 206
id-RL-InformationItem-RL-FailureInd	ProtocolIE-ID ::= 207
id-RL-InformationItem-RL-PreemptRequiredInd	ProtocolIE-ID ::= 286
id-RL-InformationItem-RL-ReconfPrepFDD	ProtocolIE-ID ::= 208
id-RL-InformationItem-RL-ReconfRqstFDD	ProtocolIE-ID ::= 209
id-RL-InformationItem-RL-RestoreInd	ProtocolIE-ID ::= 210
id-RL-InformationItem-RL-SetupRqstFDD	ProtocolIE-ID ::= 211
id-RL-InformationList-RL-AdditionRqstFDD	ProtocolIE-ID ::= 212
id-RL-informationList-RL-DeletionRqst	ProtocolIE-ID ::= 213
id-RL-InformationList-RL-PreemptRequiredInd	ProtocolIE-ID ::= 237
id-RL-InformationList-RL-ReconfPrepFDD	ProtocolIE-ID ::= 214
id-RL-InformationList-RL-ReconfRqstFDD	ProtocolIE-ID ::= 215
id-RL-InformationList-RL-SetupRqstFDD	ProtocolIE-ID ::= 216
id-RL-InformationResponseItem-RL-AdditionRspFDD	ProtocolIE-ID ::= 217
id-RL-InformationResponseItem-RL-ReconfReady	ProtocolIE-ID ::= 218
id-RL-InformationResponseItem-RL-ReconfRsp	ProtocolIE-ID ::= 219
id-RL-InformationResponseItem-RL-SetupRspFDD	ProtocolIE-ID ::= 220
id-RL-InformationResponseList-RL-AdditionRspFDD	ProtocolIE-ID ::= 221
id-RL-InformationResponseList-RL-ReconfReady	ProtocolIE-ID ::= 222
id-RL-InformationResponseList-RL-ReconfRsp	ProtocolIE-ID ::= 223
id-RL-InformationResponseList-RL-SetupRspFDD	ProtocolIE-ID ::= 224
id-RL-InformationResponse-RL-AdditionRspTDD	ProtocolIE-ID ::= 225
id-RL-InformationResponse-RL-SetupRspTDD	ProtocolIE-ID ::= 226
id-RL-Information-RL-AdditionRqstTDD	ProtocolIE-ID ::= 227
id-RL-Information-RL-ReconfRqstTDD	ProtocolIE-ID ::= 228



id-RL-Information-RL-ReconfPrepTDD  
 id-RL-Information-RL-SetupRqstTDD  
 id-RL-ReconfigurationFailureItem-RL-ReconfFailure  
 id-RL-Set-InformationItem-DM-Rprt  
 id-RL-Set-InformationItem-DM-Rsp  
 id-RL-Set-InformationItem-RL-FailureInd  
 id-RL-Set-InformationItem-RL-RestoreInd  
 id-S-CCPCH-Information  
 id-S-CPICH-Information  
 id-SCH-Information  
 id-S-SCH-Information  
 id-Secondary-CCPCHListIE-CTCH-ReconfRqstTDD  
 id-Secondary-CCPCH-parameterListIE-CTCH-SetupRqstTDD  
 id-Secondary-CCPCH-Parameters-CTCH-ReconfRqstTDD  
 id-SecondaryCPICH-InformationItem-Cell-ReconfRqstFDD  
 id-SecondaryCPICH-InformationItem-Cell-SetupRqstFDD  
 id-SecondaryCPICH-InformationList-Cell-ReconfRqstFDD  
 id-SecondaryCPICH-InformationList-Cell-SetupRqstFDD  
 id-SecondarySCH-Information-Cell-ReconfRqstFDD  
 id-SecondarySCH-Information-Cell-SetupRqstFDD  
 id-SegmentInformationListIE-SystemInfoUpdate  
 id-SFN  
 id-SignallingBearerRequestIndicator  
 id-ShutdownTimer  
 id-Start-Of-Audit-Sequence-Indicator  
 id-Successful-RL-InformationRespItem-RL-AdditionFailureFDD  
 id-Successful-RL-InformationRespItem-RL-SetupFailureFDD  
 id-SyncCase  
 id-SyncCaseIndicatorItem-Cell-SetupRqstTDD-PSCH  
 id-T-Cell  
 id-TargetCommunicationControlPortID  
 id-TimeSlotConfigurationList-Cell-ReconfRqstTDD  
 id-TimeSlotConfigurationList-Cell-SetupRqstTDD  
 id-TransmissionDiversityApplied  
 id-TypeOfError  
 id-UARFCNforNt  
 id-UARFCNforNd  
 id-UARFCNforNu  
 id-UL-CCTrCH-InformationItem-RL-SetupRqstTDD  
 id-UL-CCTrCH-InformationList-RL-AdditionRqstTDD  
 id-UL-CCTrCH-InformationList-RL-SetupRqstTDD  
 id-UL-DPCH-InformationItem-RL-AdditionRqstTDD  
 id-UL-DPCH-InformationList-RL-SetupRqstTDD  
 id-UL-DPCH-Information-RL-ReconfPrepFDD  
 id-UL-DPCH-Information-RL-ReconfRqstFDD  
 id-UL-DPCH-Information-RL-SetupRqstFDD  
 id-Unsuccessful-RL-InformationRespItem-RL-AdditionFailureFDD  
 id-Unsuccessful-RL-InformationRespItem-RL-SetupFailureFDD  
 id-Unsuccessful-RL-InformationResp-RL-AdditionFailureTDD  
 id-Unsuccessful-RL-InformationResp-RL-SetupFailureTDD  
 id-USCH-Information-Add  
 id-USCH-Information-DeleteList-RL-ReconfPrepTDD  
 id-USCH-Information-ModifyList-RL-ReconfPrepTDD

ProtocolIE-ID ::= 229  
 ProtocolIE-ID ::= 230  
 ProtocolIE-ID ::= 236  
 ProtocolIE-ID ::= 238  
 ProtocolIE-ID ::= 240  
 ProtocolIE-ID ::= 241  
 ProtocolIE-ID ::= 242  
 ProtocolIE-ID ::= 247  
 ProtocolIE-ID ::= 249  
 ProtocolIE-ID ::= 251  
 ProtocolIE-ID ::= 253  
 ProtocolIE-ID ::= 257  
 ProtocolIE-ID ::= 258  
 ProtocolIE-ID ::= 259  
 ProtocolIE-ID ::= 260  
 ProtocolIE-ID ::= 261  
 ProtocolIE-ID ::= 262  
 ProtocolIE-ID ::= 263  
 ProtocolIE-ID ::= 264  
 ProtocolIE-ID ::= 265  
 ProtocolIE-ID ::= 266  
 ProtocolIE-ID ::= 268  
 ProtocolIE-ID ::= 138  
 ProtocolIE-ID ::= 269  
 ProtocolIE-ID ::= 114  
 ProtocolIE-ID ::= 270  
 ProtocolIE-ID ::= 271  
 ProtocolIE-ID ::= 274  
 ProtocolIE-ID ::= 275  
 ProtocolIE-ID ::= 276  
 ProtocolIE-ID ::= 139  
 ProtocolIE-ID ::= 277  
 ProtocolIE-ID ::= 278  
 ProtocolIE-ID ::= 279  
 ProtocolIE-ID ::= 508  
 ProtocolIE-ID ::= 280  
 ProtocolIE-ID ::= 281  
 ProtocolIE-ID ::= 282  
 ProtocolIE-ID ::= 284  
 ProtocolIE-ID ::= 285  
 ProtocolIE-ID ::= 288  
 ProtocolIE-ID ::= 289  
 ProtocolIE-ID ::= 291  
 ProtocolIE-ID ::= 293  
 ProtocolIE-ID ::= 294  
 ProtocolIE-ID ::= 295  
 ProtocolIE-ID ::= 296  
 ProtocolIE-ID ::= 297  
 ProtocolIE-ID ::= 300  
 ProtocolIE-ID ::= 301  
 ProtocolIE-ID ::= 302  
 ProtocolIE-ID ::= 304  
 ProtocolIE-ID ::= 306

id-USCH-InformationResponse  
 id-USCH-Information  
 id-USCH-RearrangeList-Bearer-RearrangeInd  
 id-Active-Pattern-Sequence-Information  
 id-AICH-ParametersListIE-CTCH-ReconfRqstFDD  
 id-AdjustmentRatio  
 id-AP-AICH-Information  
 id-AP-AICH-ParametersListIE-CTCH-ReconfRqstFDD  
 id-FACH-ParametersListIE-CTCH-ReconfRqstFDD  
 id-CauseLevel-PSCH-ReconfFailure  
 id-CauseLevel-RL-AdditionFailureFDD  
 id-CauseLevel-RL-AdditionFailureTDD  
 id-CauseLevel-RL-ReconfFailure  
 id-CauseLevel-RL-SetupFailureFDD  
 id-CauseLevel-RL-SetupFailureTDD  
 id-CDCA-ICH-Information  
 id-CDCA-ICH-ParametersListIE-CTCH-ReconfRqstFDD  
 id-Closed-Loop-Timing-Adjustment-Mode  
 id-CommonPhysicalChannelType-CTCH-ReconfRqstFDD  
 id-Compressed-Mode-Deactivation-Flag  
 id-CPCH-Information  
 id-CPCH-Parameters-CTCH-SetupRsp  
 id-CPCH-ParametersListIE-CTCH-ReconfRqstFDD  
 id-DL-CCTrCH-InformationAddList-RL-ReconfPrepTDD  
 id-DL-CCTrCH-InformationDeleteItem-RL-ReconfRqstTDD  
 id-DL-CCTrCH-InformationDeleteList-RL-ReconfPrepTDD  
 id-DL-CCTrCH-InformationDeleteList-RL-ReconfRqstTDD  
 id-DL-CCTrCH-InformationModifyItem-RL-ReconfRqstTDD  
 id-DL-CCTrCH-InformationModifyList-RL-ReconfPrepTDD  
 id-DL-CCTrCH-InformationModifyList-RL-ReconfRqstTDD  
 id-DL-DPCH-InformationAddListIE-RL-ReconfPrepTDD  
 id-DL-DPCH-InformationModify-AddListIE-RL-ReconfPrepTDD  
 id-DL-DPCH-InformationModify-DeleteListIE-RL-ReconfPrepTDD  
 id-DL-DPCH-InformationModify-ModifyListIE-RL-ReconfPrepTDD  
 id-DL-TPC-Pattern01Count  
 id-DPC-Mode  
 id-DPCHConstant  
 id-DSCH-FDD-Common-Information  
 id-EnhancedDSCHPC  
 id-EnhancedDSCHPCIndicator  
 id-FACH-ParametersList-CTCH-SetupRsp  
 id-Limited-power-increase-information-Cell-SetupRqstFDD  
 id-PCH-Parameters-CTCH-SetupRsp  
 id-PCH-ParametersItem-CTCH-ReconfRqstFDD  
 id-PCPCH-Information  
 id-PICH-ParametersItem-CTCH-ReconfRqstFDD  
 id-PRACHConstant  
 id-PRACH-ParametersListIE-CTCH-ReconfRqstFDD  
 id-PUSCHConstant  
 id-RACH-Parameters-CTCH-SetupRsp  
 id-SSDT-CellIDforEDSCHPC  
 id-Synchronisation-Configuration-Cell-ReconfRqst  
 id-Synchronisation-Configuration-Cell-SetupRqst

ProtocolIE-ID ::= 309  
 ProtocolIE-ID ::= 310  
 ProtocolIE-ID ::= 141  
 ProtocolIE-ID ::= 315  
 ProtocolIE-ID ::= 316  
 ProtocolIE-ID ::= 317  
 ProtocolIE-ID ::= 320  
 ProtocolIE-ID ::= 322  
 ProtocolIE-ID ::= 323  
 ProtocolIE-ID ::= 324  
 ProtocolIE-ID ::= 325  
 ProtocolIE-ID ::= 326  
 ProtocolIE-ID ::= 327  
 ProtocolIE-ID ::= 328  
 ProtocolIE-ID ::= 329  
 ProtocolIE-ID ::= 330  
 ProtocolIE-ID ::= 332  
 ProtocolIE-ID ::= 333  
 ProtocolIE-ID ::= 334  
 ProtocolIE-ID ::= 335  
 ProtocolIE-ID ::= 336  
 ProtocolIE-ID ::= 342  
 ProtocolIE-ID ::= 343  
 ProtocolIE-ID ::= 346  
 ProtocolIE-ID ::= 347  
 ProtocolIE-ID ::= 348  
 ProtocolIE-ID ::= 349  
 ProtocolIE-ID ::= 350  
 ProtocolIE-ID ::= 351  
 ProtocolIE-ID ::= 352  
 ProtocolIE-ID ::= 353  
 ProtocolIE-ID ::= 355  
 ProtocolIE-ID ::= 356  
 ProtocolIE-ID ::= 357  
 ProtocolIE-ID ::= 358  
 ProtocolIE-ID ::= 450  
 ProtocolIE-ID ::= 359  
 ProtocolIE-ID ::= 94  
 ProtocolIE-ID ::= 110  
 ProtocolIE-ID ::= 111  
 ProtocolIE-ID ::= 362  
 ProtocolIE-ID ::= 369  
 ProtocolIE-ID ::= 374  
 ProtocolIE-ID ::= 375  
 ProtocolIE-ID ::= 376  
 ProtocolIE-ID ::= 380  
 ProtocolIE-ID ::= 381  
 ProtocolIE-ID ::= 383  
 ProtocolIE-ID ::= 384  
 ProtocolIE-ID ::= 385  
 ProtocolIE-ID ::= 443  
 ProtocolIE-ID ::= 393  
 ProtocolIE-ID ::= 394

id-Transmission-Gap-Pattern-Sequence-Information  
 id-UL-CCTrCH-InformationAddList-RL-ReconfPrepTDD  
 id-UL-CCTrCH-InformationDeleteItem-RL-ReconfRqstTDD  
 id-UL-CCTrCH-InformationDeleteList-RL-ReconfPrepTDD  
 id-UL-CCTrCH-InformationDeleteList-RL-ReconfRqstTDD  
 id-UL-CCTrCH-InformationModifyItem-RL-ReconfRqstTDD  
 id-UL-CCTrCH-InformationModifyList-RL-ReconfPrepTDD  
 id-UL-CCTrCH-InformationModifyList-RL-ReconfRqstTDD  
 id-UL-DPCH-InformationAddListIE-RL-ReconfPrepTDD  
 id-UL-DPCH-InformationModify-AddListIE-RL-ReconfPrepTDD  
 id-UL-DPCH-InformationModify-DeleteListIE-RL-ReconfPrepTDD  
 id-UL-DPCH-InformationModify-ModifyListIE-RL-ReconfPrepTDD  
 id-Unsuccessful-PDSCHSetItem-PSCH-ReconfFailureTDD  
 id-Unsuccessful-PUSCHSetItem-PSCH-ReconfFailureTDD  
 id-CommunicationContextInfoItem-Reset  
 id-CommunicationControlPortInfoItem-Reset  
 id-ResetIndicator  
 id-TFCI2-Bearer-Information-RL-SetupRqstFDD  
 id-TFCI2-BearerSpecificInformation-RL-ReconfPrepFDD  
 id-TFCI2-BearerInformationResponse  
 id-TFCI2BearerRequestIndicator  
 id-TimingAdvanceApplied  
 id-CFNReportingIndicator  
 id-SFNReportingIndicator  
 id-InnerLoopDLPStatus  
 id-TimeslotISCPInfo  
 id-PICH-ParametersItem-CTCH-SetupRqstTDD  
 id-PRACH-ParametersItem-CTCH-SetupRqstTDD  
 id-CCTrCH-InformationItem-RL-FailureInd  
 id-CCTrCH-InformationItem-RL-RestoreInd  
 id-CauseLevel-SyncAdjustmntFailureTDD  
 id-CellAdjustmentInfo-SyncAdjustmntRqstTDD  
 id-CellAdjustmentInfoItem-SyncAdjustmentRqstTDD  
 id-CellSyncBurstInfoList-CellSyncReconfRqstTDD  
 id-CellSyncBurstTransInit-CellSyncInitiationRqstTDD  
 id-CellSyncBurstMeasureInit-CellSyncInitiationRqstTDD  
 id-CellSyncBurstTransReconfiguration-CellSyncReconfRqstTDD  
 id-CellSyncBurstMeasReconfiguration-CellSyncReconfRqstTDD  
 id-CellSyncBurstTransInfoList-CellSyncReconfRqstTDD  
 id-CellSyncBurstMeasInfoList-CellSyncReconfRqstTDD  
 id-CellSyncBurstTransReconfInfo-CellSyncReconfRqstTDD  
 id-CellSyncInfo-CellSyncReprtTDD  
 id-CSBTransmissionID  
 id-CSBMeasurementID  
 id-IntStdPhCellSyncInfoItem-CellSyncReprtTDD  
 id-NCyclesPerSFNperiod  
 id-NRepetitionsPerCyclePeriod  
 id-SyncFrameNumber  
 id-SynchronisationReportType  
 id-SynchronisationReportCharacteristics  
 id-Unsuccessful-cell-InformationRespItem-SyncAdjustmntFailureTDD  
 id-LateEntranceCellSyncInfoItem-CellSyncReprtTDD  
 id-ReferenceClockAvailability

ProtocolIE-ID ::= 395  
 ProtocolIE-ID ::= 396  
 ProtocolIE-ID ::= 397  
 ProtocolIE-ID ::= 398  
 ProtocolIE-ID ::= 399  
 ProtocolIE-ID ::= 400  
 ProtocolIE-ID ::= 401  
 ProtocolIE-ID ::= 402  
 ProtocolIE-ID ::= 403  
 ProtocolIE-ID ::= 405  
 ProtocolIE-ID ::= 406  
 ProtocolIE-ID ::= 407  
 ProtocolIE-ID ::= 408  
 ProtocolIE-ID ::= 409  
 ProtocolIE-ID ::= 412  
 ProtocolIE-ID ::= 414  
 ProtocolIE-ID ::= 416  
 ProtocolIE-ID ::= 417  
 ProtocolIE-ID ::= 418  
 ProtocolIE-ID ::= 419  
 ProtocolIE-ID ::= 142  
 ProtocolIE-ID ::= 287  
 ProtocolIE-ID ::= 6  
 ProtocolIE-ID ::= 11  
 ProtocolIE-ID ::= 12  
 ProtocolIE-ID ::= 283  
 ProtocolIE-ID ::= 167  
 ProtocolIE-ID ::= 20  
 ProtocolIE-ID ::= 46  
 ProtocolIE-ID ::= 47  
 ProtocolIE-ID ::= 420  
 ProtocolIE-ID ::= 421  
 ProtocolIE-ID ::= 494  
 ProtocolIE-ID ::= 482  
 ProtocolIE-ID ::= 422  
 ProtocolIE-ID ::= 423  
 ProtocolIE-ID ::= 424  
 ProtocolIE-ID ::= 425  
 ProtocolIE-ID ::= 426  
 ProtocolIE-ID ::= 427  
 ProtocolIE-ID ::= 428  
 ProtocolIE-ID ::= 429  
 ProtocolIE-ID ::= 430  
 ProtocolIE-ID ::= 431  
 ProtocolIE-ID ::= 432  
 ProtocolIE-ID ::= 433  
 ProtocolIE-ID ::= 434  
 ProtocolIE-ID ::= 437  
 ProtocolIE-ID ::= 438  
 ProtocolIE-ID ::= 439  
 ProtocolIE-ID ::= 440  
 ProtocolIE-ID ::= 119  
 ProtocolIE-ID ::= 435

id-ReferenceSFNoffset  
 id-InformationExchangeID  
 id-InformationExchangeObjectType-InfEx-Rqst  
 id-InformationType  
 id-InformationReportCharacteristics  
 id-InformationExchangeObjectType-InfEx-Rsp  
 id-InformationExchangeObjectType-InfEx-Rprt  
 id-IPDLParameter-Information-Cell-ReconfRqstFDD  
 id-IPDLParameter-Information-Cell-SetupRqstFDD  
 id-IPDLParameter-Information-Cell-ReconfRqstTDD  
 id-IPDLParameter-Information-Cell-SetupRqstTDD  
 id-DL-DPCH-LCR-Information-RL-SetupRqstTDD  
 id-DwPCH-LCR-Information  
 id-DwPCH-LCR-InformationList-AuditRsp  
 id-DwPCH-LCR-Information-Cell-SetupRqstTDD  
 id-DwPCH-LCR-Information-Cell-ReconfRqstTDD  
 id-DwPCH-LCR-Information-ResourceStatusInd  
 id-maxFACH-Power-LCR-CTCH-SetupRqstTDD  
 id-maxFACH-Power-LCR-CTCH-ReconfRqstTDD  
 id-FPACH-LCR-Information  
 id-FPACH-LCR-Information-AuditRsp  
 id-FPACH-LCR-InformationList-AuditRsp  
 id-FPACH-LCR-InformationList-ResourceStatusInd  
 id-FPACH-LCR-Parameters-CTCH-SetupRqstTDD  
 id-FPACH-LCR-Parameters-CTCH-ReconfRqstTDD  
 id-PCCPCH-LCR-Information-Cell-SetupRqstTDD  
 id-PCH-Power-LCR-CTCH-SetupRqstTDD  
 id-PCH-Power-LCR-CTCH-ReconfRqstTDD  
 id-PICH-LCR-Parameters-CTCH-SetupRqstTDD  
 id-PRACH-LCR-ParametersList-CTCH-SetupRqstTDD  
 id-RL-InformationResponse-LCR-RL-SetupRspTDD  
 id-Secondary-CCPCH-LCR-parameterList-CTCH-SetupRqstTDD  
 id-TimeSlot  
 id-TimeSlotConfigurationList-LCR-Cell-ReconfRqstTDD  
 id-TimeSlotConfigurationList-LCR-Cell-SetupRqstTDD  
 id-TimeslotISCP-LCR-InfoList-RL-SetupRqstTDD  
 id-TimeSlotLCR-CM-Rqst  
 id-UL-DPCH-LCR-Information-RL-SetupRqstTDD  
 id-DL-DPCH-InformationItem-LCR-RL-AdditionRqstTDD  
 id-UL-DPCH-InformationItem-LCR-RL-AdditionRqstTDD  
 id-TimeslotISCP-InformationList-LCR-RL-AdditionRqstTDD  
 id-DL-DPCH-LCR-InformationAddList-RL-ReconfPrepTDD  
 id-DL-DPCH-LCR-InformationModify-AddList-RL-ReconfPrepTDD  
 id-DL-Timeslot-LCR-InformationModify-ModifyList-RL-ReconfPrepTDD  
 id-TimeslotISCPInfoList-LCR-DL-PC-RqstTDD  
 id-UL-DPCH-LCR-InformationAddListIE-RL-ReconfPrepTDD  
 id-UL-DPCH-LCR-InformationModify-AddList  
 id-UL-TimeslotLCR-Information-RL-ReconfPrepTDD  
 id-UL-SIRTarget  
 id-PDSCH-AddInformation-LCR-PSCH-ReconfRqst  
 id-PDSCH-AddInformation-LCR-AddListIE-PSCH-ReconfRqst  
 id-PDSCH-Information-Cell-SetupRqstFDD  
 id-PDSCH-Information-Cell-ReconfRqstFDD

ProtocolIE-ID ::= 436  
 ProtocolIE-ID ::= 444  
 ProtocolIE-ID ::= 445  
 ProtocolIE-ID ::= 446  
 ProtocolIE-ID ::= 447  
 ProtocolIE-ID ::= 448  
 ProtocolIE-ID ::= 449  
 ProtocolIE-ID ::= 451  
 ProtocolIE-ID ::= 452  
 ProtocolIE-ID ::= 453  
 ProtocolIE-ID ::= 454  
 ProtocolIE-ID ::= 74  
 ProtocolIE-ID ::= 78  
 ProtocolIE-ID ::= 90  
 ProtocolIE-ID ::= 97  
 ProtocolIE-ID ::= 99  
 ProtocolIE-ID ::= 101  
 ProtocolIE-ID ::= 154  
 ProtocolIE-ID ::= 174  
 ProtocolIE-ID ::= 290  
 ProtocolIE-ID ::= 292  
 ProtocolIE-ID ::= 22  
 ProtocolIE-ID ::= 311  
 ProtocolIE-ID ::= 312  
 ProtocolIE-ID ::= 314  
 ProtocolIE-ID ::= 456  
 ProtocolIE-ID ::= 457  
 ProtocolIE-ID ::= 458  
 ProtocolIE-ID ::= 459  
 ProtocolIE-ID ::= 461  
 ProtocolIE-ID ::= 463  
 ProtocolIE-ID ::= 465  
 ProtocolIE-ID ::= 495  
 ProtocolIE-ID ::= 466  
 ProtocolIE-ID ::= 467  
 ProtocolIE-ID ::= 468  
 ProtocolIE-ID ::= 469  
 ProtocolIE-ID ::= 470  
 ProtocolIE-ID ::= 472  
 ProtocolIE-ID ::= 473  
 ProtocolIE-ID ::= 474  
 ProtocolIE-ID ::= 475  
 ProtocolIE-ID ::= 477  
 ProtocolIE-ID ::= 479  
 ProtocolIE-ID ::= 480  
 ProtocolIE-ID ::= 481  
 ProtocolIE-ID ::= 483  
 ProtocolIE-ID ::= 485  
 ProtocolIE-ID ::= 510  
 ProtocolIE-ID ::= 486  
 ProtocolIE-ID ::= 487  
 ProtocolIE-ID ::= 26  
 ProtocolIE-ID ::= 27

id-PDSCH-ModifyInformation-LCR-PSCH-ReconfRqst  
 id-PDSCH-ModifyInformation-LCR-ModifyListIE-PSCH-ReconfRqst  
 id-PUSCH-AddInformation-LCR-PSCH-ReconfRqst  
 id-PUSCH-AddInformation-LCR-AddListIE-PSCH-ReconfRqst  
 id-PUSCH-ModifyInformation-LCR-PSCH-ReconfRqst  
 id-PUSCH-ModifyInformation-LCR-ModifyListIE-PSCH-ReconfRqst  
 id-timeslotInfo-CellSyncInitiationRqstTDD  
 id-SyncReportType-CellSyncReprtTDD  
 id-Power-Local-Cell-Group-InformationItem-AuditRsp  
 id-Power-Local-Cell-Group-InformationItem-ResourceStatusInd  
 id-Power-Local-Cell-Group-InformationItem2-ResourceStatusInd  
 id-Power-Local-Cell-Group-InformationList-AuditRsp  
 id-Power-Local-Cell-Group-InformationList-ResourceStatusInd  
 id-Power-Local-Cell-Group-InformationList2-ResourceStatusInd  
 id-Power-Local-Cell-Group-ID  
 id-PUSCH-Info-DM-Rqst  
 id-PUSCH-Info-DM-Rsp  
 id-PUSCH-Info-DM-Rprt  
 id-InitDL-Power  
 id-cellSyncBurstRepetitionPeriod  
 id-ReportCharacteristicsType-OnModification  
 id-SFNFSNMeasurementValueInformation  
 id-SFNFSNMeasurementThresholdInformation  
 id-TUTRANGPSMeasurementValueInformation  
 id-TUTRANGPSMeasurementThresholdInformation  
 id-Rx-Timing-Deviation-Value-LCR  
 id-RL-InformationResponse-LCR-RL-AdditionRspTDD  
 id-DL-PowerBalancing-Information  
 id-DL-PowerBalancing-ActivationIndicator  
 id-DL-PowerBalancing-UpdatedIndicator  
 id-CCTrCH-Initial-DL-Power-RL-SetupRqstTDD  
 id-CCTrCH-Initial-DL-Power-RL-AdditionRqstTDD  
 id-CCTrCH-Initial-DL-Power-RL-ReconfPrepTDD  
 id-IPDLParameter-Information-LCR-Cell-SetupRqstTDD  
 id-IPDLParameter-Information-LCR-Cell-ReconfRqstTDD  
 id-HS-PDSCH-HS-SCCH-MaxPower-PSCH-ReconfRqst  
 id-HS-PDSCH-HS-SCCH-ScramblingCode-PSCH-ReconfRqst  
 id-HS-PDSCH-FDD-Code-Information-PSCH-ReconfRqst  
 id-HS-SCCH-FDD-Code-Information-PSCH-ReconfRqst  
 id-HS-PDSCH-TDD-Information-PSCH-ReconfRqst  
 id-Add-To-HS-SCCH-Resource-Pool-PSCH-ReconfRqst  
 id-Modify-HS-SCCH-Resource-Pool-PSCH-ReconfRqst  
 id-Delete-From-HS-SCCH-Resource-Pool-PSCH-ReconfRqst  
 id-bindingID  
 id-RL-Specific-DCH-Info  
 id-transportlayeraddress  
 id-DelayedActivation  
 id-DelayedActivationList-RL-ActivationCmdFDD  
 id-DelayedActivationInformation-RL-ActivationCmdFDD  
 id-DelayedActivationList-RL-ActivationCmdTDD  
 id-DelayedActivationInformation-RL-ActivationCmdTDD  
 id-neighbouringTDDCellMeasurementInformationLCR  
 id-SYNCDLCodeId-TransInitLCR-CellSyncInitiationRqstTDD

ProtocolIE-ID ::= 488  
 ProtocolIE-ID ::= 489  
 ProtocolIE-ID ::= 490  
 ProtocolIE-ID ::= 491  
 ProtocolIE-ID ::= 492  
 ProtocolIE-ID ::= 493  
 ProtocolIE-ID ::= 496  
 ProtocolIE-ID ::= 497  
 ProtocolIE-ID ::= 498  
 ProtocolIE-ID ::= 499  
 ProtocolIE-ID ::= 500  
 ProtocolIE-ID ::= 501  
 ProtocolIE-ID ::= 502  
 ProtocolIE-ID ::= 503  
 ProtocolIE-ID ::= 504  
 ProtocolIE-ID ::= 505  
 ProtocolIE-ID ::= 506  
 ProtocolIE-ID ::= 507  
 ProtocolIE-ID ::= 509  
 ProtocolIE-ID ::= 511  
 ProtocolIE-ID ::= 512  
 ProtocolIE-ID ::= 513  
 ProtocolIE-ID ::= 514  
 ProtocolIE-ID ::= 515  
 ProtocolIE-ID ::= 516  
 ProtocolIE-ID ::= 520  
 ProtocolIE-ID ::= 51  
 ProtocolIE-ID ::= 28  
 ProtocolIE-ID ::= 29  
 ProtocolIE-ID ::= 30  
 ProtocolIE-ID ::= 517  
 ProtocolIE-ID ::= 518  
 ProtocolIE-ID ::= 519  
 ProtocolIE-ID ::= 41  
 ProtocolIE-ID ::= 42  
 ProtocolIE-ID ::= 522  
 ProtocolIE-ID ::= 523  
 ProtocolIE-ID ::= 524  
 ProtocolIE-ID ::= 525  
 ProtocolIE-ID ::= 526  
 ProtocolIE-ID ::= 527  
 ProtocolIE-ID ::= 528  
 ProtocolIE-ID ::= 529  
 ProtocolIE-ID ::= 102  
 ProtocolIE-ID ::= 103  
 ProtocolIE-ID ::= 104  
 ProtocolIE-ID ::= 231  
 ProtocolIE-ID ::= 232  
 ProtocolIE-ID ::= 233  
 ProtocolIE-ID ::= 234  
 ProtocolIE-ID ::= 235  
 ProtocolIE-ID ::= 58  
 ProtocolIE-ID ::= 543

id-SYNCDLCodeId-MeasureInitLCR-CellSyncInitiationRqstTDD	ProtocolIE-ID ::= 544
id-SYNCDLCodeIdTransReconfInfoLCR-CellSyncReconfRqstTDD	ProtocolIE-ID ::= 545
id-SYNCDLCodeIdMeasReconfigurationLCR-CellSyncReconfRqstTDD	ProtocolIE-ID ::= 546
id-SYNCDLCodeIdMeasInfoList-CellSyncReconfRqstTDD	ProtocolIE-ID ::= 547
id-SyncDLCodeIdsMeasInfoList-CellSyncReprTDD	ProtocolIE-ID ::= 548
id-SyncDLCodeIdThreInfoLCR	ProtocolIE-ID ::= 549
id-NSubCyclesPerCyclePeriod-CellSyncReconfRqstTDD	ProtocolIE-ID ::= 550
id-DwPCH-Power	ProtocolIE-ID ::= 551
id-AccumulatedClockupdate-CellSyncReprTDD	ProtocolIE-ID ::= 552
id-Angle-Of-Arrival-Value-LCR	ProtocolIE-ID ::= 521
id-HSDSCH-FDD-Information	ProtocolIE-ID ::= 530
id-HSDSCH-FDD-Information-Response	ProtocolIE-ID ::= 531
id-HSDSCH-Information-to-Modify	ProtocolIE-ID ::= 534
id-HSDSCH-RNTI	ProtocolIE-ID ::= 535
id-HSDSCH-TDD-Information	ProtocolIE-ID ::= 536
id-HSDSCH-TDD-Information-Response	ProtocolIE-ID ::= 537
id-HSPDSCH-RL-ID	ProtocolIE-ID ::= 541
id-PrimCCPCH-RSCP-DL-PC-RqstTDD	ProtocolIE-ID ::= 542
id-Qth-Parameter	ProtocolIE-ID ::= 64
id-PDSCH-RL-ID	ProtocolIE-ID ::= 66
id-HSDSCH-RearrangeList-Bearer-RearrangeInd	ProtocolIE-ID ::= 553
id-UL-Synchronisation-Parameters-LCR	ProtocolIE-ID ::= 554
id-HSDSCH-FDD-Update-Information	ProtocolIE-ID ::= 555
id-HSDSCH-TDD-Update-Information	ProtocolIE-ID ::= 556
id-DL-DPCH-TimeSlotFormat-LCR-ModifyItem-RL-ReconfPrepTDD	ProtocolIE-ID ::= 558
id-UL-DPCH-TimeSlotFormat-LCR-ModifyItem-RL-ReconfPrepTDD	ProtocolIE-ID ::= 559
id-TDD-TPC-UplinkStepSize-LCR-RL-SetupRqstTDD	ProtocolIE-ID ::= 560
id-TDD-TPC-UplinkStepSize-LCR-RL-AdditionRqstTDD	ProtocolIE-ID ::= 561
id-TDD-TPC-DownlinkStepSize-RL-AdditionRqstTDD	ProtocolIE-ID ::= 562
id-TDD-TPC-UplinkStepSize-InformationAdd-LCR-RL-ReconfPrepTDD	ProtocolIE-ID ::= 563
id-TDD-TPC-UplinkStepSize-InformationModify-LCR-RL-ReconfPrepTDD	ProtocolIE-ID ::= 564
id-TDD-TPC-DownlinkStepSize-InformationModify-RL-ReconfPrepTDD	ProtocolIE-ID ::= 565
id-TDD-TPC-DownlinkStepSize-InformationAdd-RL-ReconfPrepTDD	ProtocolIE-ID ::= 566
id-CCTrCH-Maximum-DL-Power-RL-SetupRqstTDD	ProtocolIE-ID ::= 567
id-CCTrCH-Minimum-DL-Power-RL-SetupRqstTDD	ProtocolIE-ID ::= 568
id-CCTrCH-Maximum-DL-Power-RL-AdditionRqstTDD	ProtocolIE-ID ::= 569
id-CCTrCH-Minimum-DL-Power-RL-AdditionRqstTDD	ProtocolIE-ID ::= 570
id-CCTrCH-Maximum-DL-Power-InformationAdd-RL-ReconfPrepTDD	ProtocolIE-ID ::= 571
id-CCTrCH-Minimum-DL-Power-InformationAdd-RL-ReconfPrepTDD	ProtocolIE-ID ::= 572
id-CCTrCH-Maximum-DL-Power-InformationModify-RL-ReconfPrepTDD	ProtocolIE-ID ::= 573
id-CCTrCH-Minimum-DL-Power-InformationModify-RL-ReconfPrepTDD	ProtocolIE-ID ::= 574
id-Maximum-DL-Power-Modify-LCR-InformationModify-RL-ReconfPrepTDD	ProtocolIE-ID ::= 575
id-Minimum-DL-Power-Modify-LCR-InformationModify-RL-ReconfPrepTDD	ProtocolIE-ID ::= 576
id-DL-DPCH-LCR-InformationModify-ModifyList-RL-ReconfRqstTDD	ProtocolIE-ID ::= 577
id-CCTrCH-Maximum-DL-Power-InformationModify-RL-ReconfRqstTDD	ProtocolIE-ID ::= 578
id-CCTrCH-Minimum-DL-Power-InformationModify-RL-ReconfRqstTDD	ProtocolIE-ID ::= 579
id-Initial-DL-Power-TimeslotLCR-InformationItem	ProtocolIE-ID ::= 580
id-Maximum-DL-Power-TimeslotLCR-InformationItem	ProtocolIE-ID ::= 581
id-Minimum-DL-Power-TimeslotLCR-InformationItem	ProtocolIE-ID ::= 582
id-HS-DSCHProvidedBitRateValueInformation	ProtocolIE-ID ::= 583
id-HS-DSCHRequiredPowerValueInformation	ProtocolIE-ID ::= 585
id-HS-DSCHRequiredPowerValue	ProtocolIE-ID ::= 586
id-TransmittedCarrierPowerOfAllCodesNotUsedForHS-PDSCHorHS-SCCHTransmission	ProtocolIE-ID ::= 587

**Release5**

id-HS-SICH-Reception-Quality  
id-HS-SICH-Reception-Quality-Measurement-Value  
id-HSSICH-Info-DM-Rprt  
id-HSSICH-Info-DM-Rqst  
id-HSSICH-Info-DM-Rsp  
id-Best-Cell-Portions-Value  
id-Primary-CPICH-Usage-for-Channel-Estimation  
id-Secondary-CPICH-Information-Change  
id-NumberOfReportedCellPortions  
id-TimeslotISCP-LCR-InfoList-RL-ReconfPrepTDD  
id-Unidirectional-DCH-Indicator  
id-TimingAdjustmentValueLCR  
id-multipleRL-dl-DPCH-InformationList  
id-multipleRL-dl-DPCH-InformationModifyList  
id-multipleRL-ul-DPCH-InformationList  
id-multipleRL-ul-DPCH-InformationModifyList  
id-RL-ID  
id-SAT-Info-Almanac-ExtItem  
id-HSDPA-Capability  
id-HSDSCH-Resources-Information-AuditRsp  
id-HSDSCH-Resources-Information-ResourceStatusInd  
id-HSDSCH-MACdFlows-to-Add  
id-HSDSCH-MACdFlows-to-Delete  
id-HSDSCH-Information-to-Modify-Unsynchronised  
id-TnlQos  
id-PrimaryCCPCH-RSCP-Delta

END

**24**

ProtocolIE-ID ::= 588  
ProtocolIE-ID ::= 589  
ProtocolIE-ID ::= 590  
ProtocolIE-ID ::= 591  
ProtocolIE-ID ::= 592  
ProtocolIE-ID ::= 593  
ProtocolIE-ID ::= 594  
ProtocolIE-ID ::= 595  
ProtocolIE-ID ::= 596  
ProtocolIE-ID ::= 599  
ProtocolIE-ID ::= 602  
ProtocolIE-ID ::= 603  
ProtocolIE-ID ::= 604  
ProtocolIE-ID ::= 605  
ProtocolIE-ID ::= 606  
ProtocolIE-ID ::= 607  
ProtocolIE-ID ::= 608  
ProtocolIE-ID ::= 609  
ProtocolIE-ID ::= 610  
ProtocolIE-ID ::= 611  
ProtocolIE-ID ::= 612  
ProtocolIE-ID ::= 613  
ProtocolIE-ID ::= 614  
ProtocolIE-ID ::= 615  
ProtocolIE-ID ::= 616  
ProtocolIE-ID ::= 623

## CHANGE REQUEST

# 25.433 CR 1036 # rev - # Current version: 6.2.0 #

For [HELP](#) on using this form, see bottom of this page or look at the pop-up text over the # symbols.

**Proposed change affects:** UICC apps#  ME  Radio Access Network  Core Network

<b>Title:</b>	# Correction for HSDPA IEs		
<b>Source:</b>	# RAN3		
<b>Work item code:</b>	# HSDPA-lurlub	<b>Date:</b>	# 16/8/2004
<b>Category:</b>	# <b>A</b>	<b>Release:</b>	# Rel-6
	<p>Use <u>one</u> of the following categories:</p> <p><b>F</b> (correction)</p> <p><b>A</b> (corresponds to a correction in an earlier release)</p> <p><b>B</b> (addition of feature),</p> <p><b>C</b> (functional modification of feature)</p> <p><b>D</b> (editorial modification)</p> <p>Detailed explanations of the above categories can be found in 3GPP <a href="#">TR 21.900</a>.</p>		<p>Use <u>one</u> of the following releases:</p> <p>Ph2 (GSM Phase 2)</p> <p>R96 (Release 1996)</p> <p>R97 (Release 1997)</p> <p>R98 (Release 1998)</p> <p>R99 (Release 1999)</p> <p>Rel-4 (Release 4)</p> <p>Rel-5 (Release 5)</p> <p>Rel-6 (Release 6)</p> <p>Rel-7 (Release 7)</p>

<b>Reason for change:</b>	<p># The name of IE(HS-DSCH Provided Bit Rate) in the tabular(9.2.1.21:Common Measurement Value) is not correct, HS-DSCH Provided Bit Rate Value Information is correct.</p> <p>And in current ASN.1, protocol IDs</p> <ul style="list-style-type: none"> <li>- "HS-DSCHRequiredPower" is used for HS-DSCH Required Power Value Information IE</li> <li>- "HS-DSCHProvidedBitRate" is used for HS-DSCH Provided Bit Rate Value Information IE</li> </ul> <p>The name of protocol IDs should be aligned with the name of defined IEs.</p>
<b>Summary of change:</b>	<p># - In 9.2.1.21 "HS-DSCH Provided Bit Rate" IE was corrected to "HS-DSCH Provided Bit Rate Value Information" IE</p> <p>In ASN.1, protocol IDs</p> <ul style="list-style-type: none"> <li>- "HS-DSCHRequiredPower" was redefined to "HS-DSCHRequiredPowerValueInformation"</li> <li>- "HS-DSCHProvidedBitRate" was defined to "HS-DSCHProvidedBitRateValueInformation"</li> </ul> <p><u>Impact assessment towards the previous version of the specification (same release):</u></p>



This CR has no impact with the previous version of the specification (same release) because the proposed changes are for editorial correction.

**Consequences if not approved:** ⌘ Misalignments for the name of HSDPA IE remain between tabular and ASN.1.

**Clauses affected:** ⌘ 9.2.1.12, 9.3.4, 9.3.6

**Other specs Affected:**

Y	N
X	
	X
	X

Other core specifications ⌘ CR1035 TS25.433 v5.9.0  
Test specifications  
O&M Specifications

**Other comments:** ⌘

### How to create CRs using this form:

Comprehensive information and tips about how to create CRs can be found at <http://www.3gpp.org/specs/CR.htm>. Below is a brief summary:

- 1) Fill out the above form. The symbols above marked ⌘ contain pop-up help information about the field that they are closest to.
- 2) Obtain the latest version for the release of the specification to which the change is proposed. Use the MS Word "revision marks" feature (also known as "track changes") when making the changes. All 3GPP specifications can be downloaded from the 3GPP server under <ftp://ftp.3gpp.org/specs/>. For the latest version, look for the directory name with the latest date e.g. 2001-03 contains the specifications resulting from the March 2001 TSG meetings.
- 3) With "track changes" disabled, paste the entire CR form (use CTRL-A to select it) into the specification just in front of the clause containing the first piece of changed text. Delete those parts of the specification which are not relevant to the change request.

### 9.2.1.12 Common Measurement Value

The Common Measurement Value shall be the most recent value for this measurement, for which the reporting criteria were met.

IE/Group Name	Presence	Range	IE Type and Reference	Semantics Description	Criticality	Assigned Criticality
CHOICE <i>Common Measurement Value</i>	M				–	
> <i>Transmitted Carrier Power</i>					–	
>> <i>Transmitted Carrier Power Value</i>	M		INTEGER (0..100)	According to mapping in [22] and [23]	–	
> <i>Received Total Wide Band Power</i>					–	
>> <i>Received Total Wide Band Power Value</i>	M		INTEGER (0..621)	According to mapping in [22] and [23]	–	
> <i>Acknowledged PRACH Preambles</i>				FDD Only	–	
>> <i>Acknowledged PRACH Preamble Value</i>	M		INTEGER (0..240,...)	According to mapping in [22]	–	
> <i>UL Timeslot ISCP</i>				TDD Only	–	
>> <i>UL Timeslot ISCP</i>	M		INTEGER (0..127)	According to mapping in [23]	–	
> <i>Acknowledged PCPCH Access Preambles</i>				FDD Only	–	
>> <i>Acknowledged PCPCH Access Preambles</i>	M		INTEGER (0..15,...)	According to mapping in [22]	–	
> <i>Detected PCPCH Access Preambles</i>				FDD Only	–	
>> <i>Detected PCPCH Access Preambles</i>	M		INTEGER (0..240,...)	According to mapping in [22]	–	
> <i>Additional Common Measurement Values</i>					–	
>> <i>UTRAN GPS Timing Of Cell Frames for UE Positioning</i>					–	
>>> <i>T<sub>UTRAN-GPS</sub> Measurement Value Information</i>	M		9.2.1.64A		YES	ignore
>> <i>SFN-SFN Observed Time Difference</i>					–	
>>> <i>SFN-SFN Measurement Value Information</i>	M		9.2.1.53E		YES	ignore
>> <i>Transmitted Carrier Power Of All Codes Not Used For HS-PDSCH Or HS-SCCH Transmission</i>					–	
>>> <i>Transmitted Carrier Power Of All Codes Not Used For HS-PDSCH Or HS-SCCH Transmission Value</i>	M		INTEGER (0..100)	According to mapping in [22] and [23]	YES	ignore
>> <i>HS-DSCH Required Power</i>					–	
>>> <i>HS-DSCH Required Power Value Information</i>	M		9.2.1.31lc		YES	ignore

>>HS-DSCH Provided Bit Rate					–	
>>>HS-DSCH Provided Bit Rate Value Information	M		9.2.1.31Ib		YES	ignore
>>Transmitted Carrier Power For Cell Portion					–	
>>>Transmitted Carrier Power For Cell Portion Value		1..< maxNrOfCellPortions>		FDD Only	GLOBAL	ignore
>>>>Cell Portion ID	M		9.2.2.1Ca		–	
>>>>Transmitted Carrier Power Value	M		INTEGER (0..100)	According to mapping in [22]	–	
>>Received Total Wide Band Power For Cell Portion					–	
>>>Received Total Wide Band Power For Cell Portion Value		1..< maxNrOfCellPortions>		FDD Only	GLOBAL	ignore
>>>>Cell Portion ID	M		9.2.2.1Ca		–	
>>>>Received Total Wide Band Power Value	M		INTEGER (0..621)	According to mapping in [22]	–	
>>Transmitted Carrier Power Of All Codes Not Used For HS-PDSCH Or HS-SCCH Transmission For Cell Portion					–	
>>>Transmitted Carrier Power Of All Codes Not Used For HS- PDSCH Or HS- SCCH Transmission For Cell Portion Value		1..< maxNrOfCellPortions>		FDD Only	GLOBAL	ignore
>>>>Cell Portion ID	M		9.2.2.1Ca		–	
>>>>Transmitted Carrier Power Of All Codes Not Used For HS-PDSCH Or HS-SCCH Transmission Value	M		INTEGER (0..100)	According to mapping in [22]	–	
>>UpPTS interference				1.28Mcps TDD Only	–	
>>>UpPTS interference Value	M		INTEGER (0..127,...)	According to mapping in [23]	YES	reject

Range Bound	Explanation
MaxNrOfCellPortions	Maximum number of Cell Portions in a cell

/\* partly omitted \*/

## 9.3.4 Information Elements Definitions

```
--*****
--
-- Information Element Definitions
--
--*****
```

```
NBAP-IEs {
itu-t (0) identified-organization (4) etsi (0) mobileDomain (0)
umts-Access (20) modules (3) nbap (2) version1 (1) nbap-IEs (2) }
```

```
DEFINITIONS AUTOMATIC TAGS ::=
BEGIN
```

```
IMPORTS
    maxNrOfRLs ,
    maxNrOfTFCs ,
    maxNrOfErrors ,
    maxCTFC ,
    maxNrOfTfFs ,
    maxTTI-count ,
    maxRateMatching ,
    maxCodeNrComp-1 ,
    maxHS-PDSCHCodeNrComp-1 ,
    maxHS-SCCHCodeNrComp-1 ,
    maxNrOfCellSyncBursts ,
    maxNrOfCodeGroups ,
    maxNrOfMeasNCell ,
    maxNrOfMeasNCell-1 ,
    maxNrOfReceiptsPerSyncFrame ,
    maxNrOfTFCIGroups ,
    maxNrOfTFCI1Combs ,
    maxNrOfTFCI2Combs ,
    maxNrOfTFCI2Combs-1 ,
    maxNrOfSF ,
    maxTGPS ,
    maxNrOfUSCHs ,
    maxNrOfULTSs ,
    maxNrOfULTSLCRs ,
    maxNrOfDPCHs ,
    maxNrOfDPCHLCRs ,
    maxNrOfCodes ,
    maxNrOfDSCHs ,
    maxNrOfDLTSs ,
    maxNrOfDLTSLCRs ,
    maxNrOfDCHs ,
    maxNrOfLevels ,
    maxNoGPSItems ,
    maxNoSat ,
```

maxNrOfCellPortionsPerCell,  
maxNrOfCellPortionsPerCell-1,  
maxNrOfHSSCCHs,  
maxNrOfHSSCCHCodes,  
maxNrOfMACdFlows,  
maxNrOfMACdFlows-1,  
maxNrOfMACdPDUIndexes,  
maxNrOfMACdPDUIndexes-1,  
maxNrOfPriorityQueues,  
maxNrOfPriorityQueues-1,  
maxNrOfHARQProcesses,  
maxNrOfSyncDLCodesLCR,  
maxNrOfSyncFramesLCR,  
maxNrOfContextsOnUeList,  
maxNrOfPriorityClasses,  
maxNrOfSatAlmanac-maxNoSat,  
  
id-MessageStructure,  
id-ReportCharacteristicsType-OnModification,  
id-Rx-Timing-Deviation-Value-LCR,  
id-SFNMeasurementValueInformation,  
id-SFNMeasurementThresholdInformation,  
id-TUTRANGPSMeasurementValueInformation,  
id-TUTRANGPSMeasurementThresholdInformation,  
id-TypeOfError,  
id-transportlayeraddress,  
id-bindingID,  
id-Angle-Of-Arrival-Value-LCR,  
id-SyncDLCodeIdThreInfoLCR,  
id-neighbouringTDDCellMeasurementInformationLCR,  
id-HS-SICH-Reception-Quality,  
id-HS-SICH-Reception-Quality-Measurement-Value,  
id-Initial-DL-Power-TimeslotLCR-InformationItem,  
id-Maximum-DL-Power-TimeslotLCR-InformationItem,  
id-Minimum-DL-Power-TimeslotLCR-InformationItem,  
id-Received-total-wide-band-power-For-CellPortion,  
id-Received-total-wide-band-power-For-CellPortion-Value,  
id-Transmitted-Carrier-Power-For-CellPortion,  
id-Transmitted-Carrier-Power-For-CellPortion-Value,  
id-TransmittedCarrierPowerOfAllCodesNotUsedForHS-PDSCHOrHS-SCCHTransmission,  
id-TransmittedCarrierPowerOfAllCodesNotUsedForHS-PDSCHOrHS-SCCHTransmissionCellPortion,  
id-TransmittedCarrierPowerOfAllCodesNotUsedForHS-PDSCHOrHS-SCCHTransmissionCellPortionValue,  
id-HS-DSCHRequiredPowerValueInformation,  
id-HS-DSCHProvidedBitRateValueInformation,  
id-HS-DSCHRequiredPowerValue,  
id-Best-Cell-Portions-Value,  
id-Unidirectional-DCH-Indicator,  
id-SAT-Info-Almanac-ExtItem,  
id-TnlQos,  
id-UpPTSInterferenceValue  
FROM NBAP-Constants  
  
Criticality,  
ProcedureID,

```
    ProtocolIE-ID,
    TransactionID,
    TriggeringMessage
FROM NBAP-CommonDataTypes

    NBAP-PROTOCOL-IES,
    ProtocolExtensionContainer{},
    ProtocolIE-Single-Container{},
    NBAP-PROTOCOL-EXTENSION
FROM NBAP-Containers;

/* partly omitted */

-- =====
-- C
-- =====

Cause ::= CHOICE {
    radioNetwork          CauseRadioNetwork,
    transport             CauseTransport,
    protocol              CauseProtocol,
    misc                  CauseMisc,
    ...
}

CauseMisc ::= ENUMERATED {
    control-processing-overload,
    hardware-failure,
    oam-intervention,
    not-enough-user-plane-processing-resources,
    unspecified,
    ...
}

CauseProtocol ::= ENUMERATED {
    transfer-syntax-error,
    abstract-syntax-error-reject,
    abstract-syntax-error-ignore-and-notify,
    message-not-compatible-with-receiver-state,
    semantic-error,
    unspecified,
    abstract-syntax-error-falsely-constructed-message,
    ...
}

CauseRadioNetwork ::= ENUMERATED {
    unknown-C-ID,
    cell-not-available,
    power-level-not-supported,
    dl-radio-resources-not-available,
    ul-radio-resources-not-available,
    r1-already-ActivatedOrAllocated,
    nodeB-Resources-unavailable,

```

```

measurement-not-supported-for-the-object,
combining-resources-not-available,
requested-configuration-not-supported,
synchronisation-failure,
priority-transport-channel-established,
sIB-Origination-in-Node-B-not-Supported,
requested-tx-diversity-mode-not-supported,
unspecified,
bCCH-scheduling-error,
measurement-temporarily-not-available,
invalid-CM-settings,
reconfiguration-CFN-not-elapsed,
number-of-DL-codes-not-supported,
s-cipch-not-supported,
combining-not-supported,
ul-sf-not-supported,
dl-SF-not-supported,
common-transport-channel-type-not-supported,
dedicated-transport-channel-type-not-supported,
downlink-shared-channel-type-not-supported,
uplink-shared-channel-type-not-supported,
cm-not-supported,
tx-diversity-no-longer-supported,
unknown-Local-Cell-ID,
...
number-of-UL-codes-not-supported,
information-temporarily-not-available,
information-provision-not-supported-for-the-object,
cell-synchronisation-not-supported,
cell-synchronisation-adjustment-not-supported,
dpc-mode-change-not-supported,
iPDL-already-activated,
iPDL-not-supported,
iPDL-parameters-not-available,
frequency-acquisition-not-supported,
power-balancing-status-not-compatible,
requested-typeofbearer-re-arrangement-not-supported,
signalling-Bearer-Re-arrangement-not-supported,
bearer-Re-arrangement-needed,
delayed-activation-not-supported,
rl-timing-adjustment-not-supported
}

CauseTransport ::= ENUMERATED {
    transport-resource-unavailable,
    unspecified,
    ...
}

CCTrCH-ID ::= INTEGER (0..15)

CDSubChannelNumbers ::= BIT STRING {
    subCh11(0),

```



```
        subCh10(1),
        subCh9(2),
        subCh8(3),
        subCh7(4),
        subCh6(5),
        subCh5(6),
        subCh4(7),
        subCh3(8),
        subCh2(9),
        subCh1(10),
        subCh0(11)
    } (SIZE (12))

CellParameterID ::= INTEGER (0..127,...)

CellPortionID ::= INTEGER (0..maxNrOfCellPortionsPerCell-1,...)

CellSyncBurstCode ::= INTEGER(0..7, ...)

CellSyncBurstCodeShift ::= INTEGER(0..7)

CellSyncBurstRepetitionPeriod ::= INTEGER (0..4095)

CellSyncBurstSIR ::= INTEGER (0..31)

CellSyncBurstTiming ::= CHOICE {
    initialPhase          INTEGER (0..1048575,...),
    steadyStatePhase      INTEGER (0..255,...)
}

CellSyncBurstTimingLCR ::= CHOICE {
    initialPhase          INTEGER (0..524287,...),
    steadyStatePhase      INTEGER (0..127,...)
}

CellSyncBurstTimingThreshold ::= INTEGER(0..254)

CFN ::= INTEGER (0..255)

Channel-Assignment-Indication ::= ENUMERATED {
    cA-Active,
    cA-Inactive
}

ChipOffset ::= INTEGER (0..38399)
-- Unit Chip

C-ID ::= INTEGER (0..65535)

Closedlooptimingadjustmentmode ::= ENUMERATED {
    adj-1-slot,
    adj-2-slot,
    ...
}
```

```

}

CommonChannelsCapacityConsumptionLaw ::= SEQUENCE (SIZE(1..maxNrOfSF)) OF
  SEQUENCE {
    dl-Cost      INTEGER (0..65535),
    ul-Cost      INTEGER (0..65535),
    iE-Extensions ProtocolExtensionContainer { { CommonChannelsCapacityConsumptionLaw-ExtIEs } }
    ...
  }

CommonChannelsCapacityConsumptionLaw-ExtIEs NBAP-PROTOCOL-EXTENSION ::= {
  ...
}

CommonMeasurementAccuracy ::= CHOICE {
  tUTRANGPSMeasurementAccuracyClass TUTRANGPSAccuracyClass,
  ...
}

CommonMeasurementType ::= ENUMERATED {
  received-total-wide-band-power,
  transmitted-carrier-power,
  acknowledged-prach-preambles,
  ul-timeslot-iscp,
  acknowledged-PCPCH-access-preambles,
  detected-PCPCH-access-preambles,
  ...,
  uTRAN-GPS-Timing-of-Cell-Frames-for-UE-Positioning,
  sFN-SFN-Observed-Time-Difference,
  transmittedCarrierPowerOfAllCodesNotUsedForHS-PDSCHOrHS-SCCHTransmission,
  hS-DSCH-Required-Power,
  hS-DSCH-Provided-Bit-Rate,
  received-total-wide-band-power-for-cellPortion,
  transmitted-carrier-power-for-cellPortion,
  transmittedCarrierPowerOfAllCodesNotUsedForHS-PDSCHOrHS-SCCHTransmission-for-cellPortion,
  upPTS-Interference
}

CommonMeasurementValue ::= CHOICE {
  transmitted-carrier-power      Transmitted-Carrier-Power-Value,
  received-total-wide-band-power Received-total-wide-band-power-Value,
  acknowledged-prach-preambles  Acknowledged-PRACH-preambles-Value,
  uL-TimeslotISCP                UL-TimeslotISCP-Value,
  acknowledged-PCPCH-access-preambles Acknowledged-PCPCH-access-preambles,
  detected-PCPCH-access-preambles  Detected-PCPCH-access-preambles,
  ...,
  extension-CommonMeasurementValue Extension-CommonMeasurementValue
}

Extension-CommonMeasurementValue ::= ProtocolIE-Single-Container {{ Extension-CommonMeasurementValueIE }}

Extension-CommonMeasurementValueIE NBAP-PROTOCOL-IES ::= {
  { ID id-TUTRANGPSMeasurementValueInformation CRITICALITY ignore TYPE TUTRANGPSMeasurementValueInformation PRESENCE mandatory }|

```

```

    { ID id-SFNMeasurementValueInformation          CRITICALITY ignore  TYPE SFNMeasurementValueInformation          PRESENCE mandatory }|
    { ID id-TransmittedCarrierPowerOfAllCodesNotUsedForHS-PDSCHOrHS-SCCHTransmission  CRITICALITY ignore TYPE
TransmittedCarrierPowerOfAllCodesNotUsedForHS-PDSCHOrHS-SCCHTransmissionValue          PRESENCE mandatory }|
    { ID id-HS-DSCHRequiredPowerValueInformation    CRITICALITY ignore  TYPE HS-DSCHRequiredPower          PRESENCE
mandatory }|
    { ID id-HS-DSCHProvidedBitRateValueInformation CRITICALITY ignore  TYPE HS-DSCHProvidedBitRate          PRESENCE
mandatory }|
    { ID id-Transmitted-Carrier-Power-For-CellPortion-Value CRITICALITY ignore  TYPE Transmitted-Carrier-Power-For-CellPortion-Value PRESENCE
mandatory }|
    { ID id-Received-total-wide-band-power-For-CellPortion-Value CRITICALITY ignore  TYPE Received-total-wide-band-power-For-CellPortion-Value
PRESENCE mandatory }|
    { ID id-TransmittedCarrierPowerOfAllCodesNotUsedForHS-PDSCHOrHS-SCCHTransmissionCellPortionValue CRITICALITY ignore  TYPE
TransmittedCarrierPowerOfAllCodesNotUsedForHS-PDSCHOrHS-SCCHTransmissionCellPortionValue          PRESENCE mandatory }|
    { ID id-UpPTSInterferenceValue          CRITICALITY ignore  TYPE UpPTSInterferenceValue          PRESENCE mandatory }
}

CommonMeasurementValueInformation ::= CHOICE {
    measurementAvailable          CommonMeasurementAvailable,
    measurementnotAvailable      CommonMeasurementnotAvailable
}

CommonMeasurementAvailable ::= SEQUENCE {
    commonmeasurementValue      CommonMeasurementValue,
    ie-Extensions                ProtocolExtensionContainer { { CommonMeasurementAvailableItem-ExtIEs} }          OPTIONAL,
    ...
}

CommonMeasurementAvailableItem-ExtIEs NBAP-PROTOCOL-EXTENSION ::= {
    ...
}

CommonMeasurementnotAvailable ::= NULL

CommonPhysicalChannelID ::= INTEGER (0..255)

Common-PhysicalChannel-Status-Information ::= SEQUENCE {
    commonPhysicalChannelID      CommonPhysicalChannelID,
    resourceOperationalState      ResourceOperationalState,
    availabilityStatus            AvailabilityStatus,
    iE-Extensions                ProtocolExtensionContainer { { Common-PhysicalChannel-Status-Information-ExtIEs} }          OPTIONAL,
    ...
}

Common-PhysicalChannel-Status-Information-ExtIEs NBAP-PROTOCOL-EXTENSION ::= {
    ...
}

CommonTransportChannelID ::= INTEGER (0..255)

```

```
CommonTransportChannel-InformationResponse ::= SEQUENCE {
    commonTransportChannelID      CommonTransportChannelID,
    bindingID                     BindingID OPTIONAL,
    transportLayerAddress         TransportLayerAddress OPTIONAL,
    iE-Extensions                 ProtocolExtensionContainer { { CommonTransportChannel-InformationResponse-ExtIEs } } OPTIONAL,
    ...
}

CommonTransportChannel-InformationResponse-ExtIEs NBAP-PROTOCOL-EXTENSION ::= {
    ...
}

Common-TransportChannel-Status-Information ::= SEQUENCE {
    commonTransportChannelID      CommonTransportChannelID,
    resourceOperationalState     ResourceOperationalState,
    availabilityStatus           AvailabilityStatus,
    iE-Extensions                 ProtocolExtensionContainer { { Common-TransportChannel-Status-Information-ExtIEs } } OPTIONAL,
    ...
}

Common-TransportChannel-Status-Information-ExtIEs NBAP-PROTOCOL-EXTENSION ::= {
    ...
}

CommunicationControlPortID ::= INTEGER (0..65535)

Compressed-Mode-Deactivation-Flag ::= ENUMERATED {
    deactivate,
    maintain-Active
}

ConfigurationGenerationID ::= INTEGER (0..255)
-- Value '0' means "No configuration"

ConstantValue ::= INTEGER (-10..10,...)
-- -10 dB - +10 dB
-- unit dB
-- step 1 dB

CPCH-Allowed-Total-Rate ::= ENUMERATED {
    v15,
    v30,
    v60,
    v120,
    v240,
    v480,
    v960,
    v1920,
    v2880,
    v3840,
    v4800,
}
```

```

    v5760,
    ...
}

CPCHScramblingCodeNumber ::= INTEGER (0..79)

CPCH-UL-DPCCH-SlotFormat ::= INTEGER (0..2,...)

CQI-Feedback-Cycle ::= ENUMERATED {v0, v2, v4, v8, v10, v20, v40, v80, v160,...}

CQI-Power-Offset ::= INTEGER (0..8,...)
-- According to mapping in ref. [9] subclause 4.2.1

CQI-RepetitionFactor ::= INTEGER (1..4,...)
-- Step: 1

CriticalityDiagnostics ::= SEQUENCE {
    procedureID          ProcedureID          OPTIONAL,
    triggeringMessage    TriggeringMessage    OPTIONAL,
    procedureCriticality Criticality          OPTIONAL,
    transactionID       TransactionID        OPTIONAL,
    iEsCriticalityDiagnostics CriticalityDiagnostics-IE-List OPTIONAL,
    iE-Extensions       ProtocolExtensionContainer { {CriticalityDiagnostics-ExtIEs} } OPTIONAL,
    ...
}

CriticalityDiagnostics-ExtIEs NBAP-PROTOCOL-EXTENSION ::= {
    ...
}

CriticalityDiagnostics-IE-List ::= SEQUENCE (SIZE (1..maxNrOfErrors)) OF
    SEQUENCE {
        iECriticality      Criticality,
        iE-ID              ProtocolIE-ID,
        repetitionNumber   RepetitionNumber0 OPTIONAL,
        iE-Extensions      ProtocolExtensionContainer { {CriticalityDiagnostics-IE-List-ExtIEs} } OPTIONAL,
        ...
    }

CriticalityDiagnostics-IE-List-ExtIEs NBAP-PROTOCOL-EXTENSION ::= {
    { ID id-MessageStructure      CRITICALITY ignore      EXTENSION MessageStructure      PRESENCE optional }|
    { ID id-TypeOfError           CRITICALITY ignore      EXTENSION TypeOfError           PRESENCE mandatory }|
    ...
}

CRNC-CommunicationContextID ::= INTEGER (0..1048575)

CSBMeasurementID ::= INTEGER (0..65535)

CSBTransmissionID ::= INTEGER (0..65535)

```

```
/* partly omitted */
```

## 9.3.6 Constant Definitions

```
/* partly omitted */
```

```
-- *****
--
-- IEs
--
-- *****

id-AICH-Information ProtocolIE-ID ::= 0
id-AICH-InformationItem-ResourceStatusInd ProtocolIE-ID ::= 1
id-BCH-Information ProtocolIE-ID ::= 7
id-BCH-InformationItem-ResourceStatusInd ProtocolIE-ID ::= 8
id-BCCH-ModificationTime ProtocolIE-ID ::= 9
id-BlockingPriorityIndicator ProtocolIE-ID ::= 10
id-Cause ProtocolIE-ID ::= 13
id-CCP-InformationItem-AuditRsp ProtocolIE-ID ::= 14
id-CCP-InformationList-AuditRsp ProtocolIE-ID ::= 15
id-CCP-InformationItem-ResourceStatusInd ProtocolIE-ID ::= 16
id-Cell-InformationItem-AuditRsp ProtocolIE-ID ::= 17
id-Cell-InformationItem-ResourceStatusInd ProtocolIE-ID ::= 18
id-Cell-InformationList-AuditRsp ProtocolIE-ID ::= 19
id-CellParameterID ProtocolIE-ID ::= 23
id-CFN ProtocolIE-ID ::= 24
id-C-ID ProtocolIE-ID ::= 25
id-CommonMeasurementAccuracy ProtocolIE-ID ::= 39
id-CommonMeasurementObjectType-CM-Rprt ProtocolIE-ID ::= 31
id-CommonMeasurementObjectType-CM-Rqst ProtocolIE-ID ::= 32
id-CommonMeasurementObjectType-CM-Rsp ProtocolIE-ID ::= 33
id-CommonMeasurementType ProtocolIE-ID ::= 34
id-CommonPhysicalChannelID ProtocolIE-ID ::= 35
id-CommonPhysicalChannelType-CTCH-SetupRqstFDD ProtocolIE-ID ::= 36
id-CommonPhysicalChannelType-CTCH-SetupRqstTDD ProtocolIE-ID ::= 37
id-CommunicationControlPortID ProtocolIE-ID ::= 40
id-ConfigurationGenerationID ProtocolIE-ID ::= 43
id-CRNC-CommunicationContextID ProtocolIE-ID ::= 44
id-CriticalityDiagnostics ProtocolIE-ID ::= 45
id-DCHs-to-Add-FDD ProtocolIE-ID ::= 48
id-DCH-AddList-RL-ReconfPrepTDD ProtocolIE-ID ::= 49
id-DCHs-to-Add-TDD ProtocolIE-ID ::= 50
id-DCH-DeleteList-RL-ReconfPrepFDD ProtocolIE-ID ::= 52
id-DCH-DeleteList-RL-ReconfPrepTDD ProtocolIE-ID ::= 53
id-DCH-DeleteList-RL-ReconfRqstFDD ProtocolIE-ID ::= 54
id-DCH-DeleteList-RL-ReconfRqstTDD ProtocolIE-ID ::= 55
id-DCH-FDD-Information ProtocolIE-ID ::= 56
id-DCH-TDD-Information ProtocolIE-ID ::= 57
id-DCH-InformationResponse ProtocolIE-ID ::= 59
id-FDD-DCHs-to-Modify ProtocolIE-ID ::= 62
id-TDD-DCHs-to-Modify ProtocolIE-ID ::= 63
id-DCH-ModifyList-RL-ReconfRqstTDD ProtocolIE-ID ::= 65
id-DCH-RearrangeList-Bearer-RearrangeInd ProtocolIE-ID ::= 135
```

id-DedicatedMeasurementObjectType-DM-Rprt  
 id-DedicatedMeasurementObjectType-DM-Rqst  
 id-DedicatedMeasurementObjectType-DM-Rsp  
 id-DedicatedMeasurementType  
 id-DL-CCTrCH-InformationItem-RL-SetupRqstTDD  
 id-DL-CCTrCH-InformationList-RL-AdditionRqstTDD  
 id-DL-CCTrCH-InformationList-RL-SetupRqstTDD  
 id-DL-DPCH-InformationItem-RL-AdditionRqstTDD  
 id-DL-DPCH-InformationList-RL-SetupRqstTDD  
 id-DL-DPCH-Information-RL-ReconfPrepFDD  
 id-DL-DPCH-Information-RL-ReconfRqstFDD  
 id-DL-DPCH-Information-RL-SetupRqstFDD  
 id-DL-DPCH-TimingAdjustment  
 id-DL-ReferencePowerInformationItem-DL-PC-Rqst  
 id-DLReferencePower  
 id-DLReferencePowerList-DL-PC-Rqst  
 id-DSCH-AddItem-RL-ReconfPrepFDD  
 id-DSCHs-to-Add-FDD  
 id-DSCH-DeleteItem-RL-ReconfPrepFDD  
 id-DSCH-DeleteList-RL-ReconfPrepFDD  
 id-DSCHs-to-Add-TDD  
 id-DSCH-Information-DeleteList-RL-ReconfPrepTDD  
 id-DSCH-Information-ModifyList-RL-ReconfPrepTDD  
 id-DSCH-InformationResponse  
 id-DSCH-FDD-Information  
 id-DSCH-TDD-Information  
 id-DSCH-ModifyItem-RL-ReconfPrepFDD  
 id-DSCH-ModifyList-RL-ReconfPrepFDD  
 id-DSCH-RearrangeList-Bearer-RearrangeInd  
 id-End-Of-Audit-Sequence-Indicator  
 id-FACH-Information  
 id-FACH-InformationItem-ResourceStatusInd  
 id-FACH-ParametersList-CTCH-ReconfRqstTDD  
 id-FACH-ParametersListIE-CTCH-SetupRqstFDD  
 id-FACH-ParametersListIE-CTCH-SetupRqstTDD  
 id-IndicationType-ResourceStatusInd  
 id-Local-Cell-ID  
 id-Local-Cell-Group-InformationItem-AuditRsp  
 id-Local-Cell-Group-InformationItem-ResourceStatusInd  
 id-Local-Cell-Group-InformationItem2-ResourceStatusInd  
 id-Local-Cell-Group-InformationList-AuditRsp  
 id-Local-Cell-InformationItem-AuditRsp  
 id-Local-Cell-InformationItem-ResourceStatusInd  
 id-Local-Cell-InformationItem2-ResourceStatusInd  
 id-Local-Cell-InformationList-AuditRsp  
 id-AdjustmentPeriod  
 id-MaxAdjustmentStep  
 id-MaximumTransmissionPower  
 id-MeasurementFilterCoefficient  
 id-MeasurementID  
 id-MessageStructure  
 id-MIB-SB-SIB-InformationList-SystemInfoUpdateRqst  
 id-NodeB-CommunicationContextID

ProtocolIE-ID ::= 67  
 ProtocolIE-ID ::= 68  
 ProtocolIE-ID ::= 69  
 ProtocolIE-ID ::= 70  
 ProtocolIE-ID ::= 72  
 ProtocolIE-ID ::= 73  
 ProtocolIE-ID ::= 76  
 ProtocolIE-ID ::= 77  
 ProtocolIE-ID ::= 79  
 ProtocolIE-ID ::= 81  
 ProtocolIE-ID ::= 82  
 ProtocolIE-ID ::= 83  
 ProtocolIE-ID ::= 21  
 ProtocolIE-ID ::= 84  
 ProtocolIE-ID ::= 85  
 ProtocolIE-ID ::= 86  
 ProtocolIE-ID ::= 87  
 ProtocolIE-ID ::= 89  
 ProtocolIE-ID ::= 91  
 ProtocolIE-ID ::= 93  
 ProtocolIE-ID ::= 96  
 ProtocolIE-ID ::= 98  
 ProtocolIE-ID ::= 100  
 ProtocolIE-ID ::= 105  
 ProtocolIE-ID ::= 106  
 ProtocolIE-ID ::= 107  
 ProtocolIE-ID ::= 108  
 ProtocolIE-ID ::= 112  
 ProtocolIE-ID ::= 136  
 ProtocolIE-ID ::= 113  
 ProtocolIE-ID ::= 116  
 ProtocolIE-ID ::= 117  
 ProtocolIE-ID ::= 120  
 ProtocolIE-ID ::= 121  
 ProtocolIE-ID ::= 122  
 ProtocolIE-ID ::= 123  
 ProtocolIE-ID ::= 124  
 ProtocolIE-ID ::= 2  
 ProtocolIE-ID ::= 3  
 ProtocolIE-ID ::= 4  
 ProtocolIE-ID ::= 5  
 ProtocolIE-ID ::= 125  
 ProtocolIE-ID ::= 126  
 ProtocolIE-ID ::= 127  
 ProtocolIE-ID ::= 128  
 ProtocolIE-ID ::= 129  
 ProtocolIE-ID ::= 130  
 ProtocolIE-ID ::= 131  
 ProtocolIE-ID ::= 132  
 ProtocolIE-ID ::= 133  
 ProtocolIE-ID ::= 115  
 ProtocolIE-ID ::= 134  
 ProtocolIE-ID ::= 143

id-NeighbouringCellMeasurementInformation	ProtocolIE-ID ::= 455
id-P-CCPCH-Information	ProtocolIE-ID ::= 144
id-P-CCPCH-InformationItem-ResourceStatusInd	ProtocolIE-ID ::= 145
id-P-CPICH-Information	ProtocolIE-ID ::= 146
id-P-CPICH-InformationItem-ResourceStatusInd	ProtocolIE-ID ::= 147
id-P-SCH-Information	ProtocolIE-ID ::= 148
id-PCCPCH-Information-Cell-ReconfRqstTDD	ProtocolIE-ID ::= 150
id-PCCPCH-Information-Cell-SetupRqstTDD	ProtocolIE-ID ::= 151
id-PCH-Parameters-CTCH-ReconfRqstTDD	ProtocolIE-ID ::= 155
id-PCH-ParametersItem-CTCH-SetupRqstFDD	ProtocolIE-ID ::= 156
id-PCH-ParametersItem-CTCH-SetupRqstTDD	ProtocolIE-ID ::= 157
id-PCH-Information	ProtocolIE-ID ::= 158
id-PDSCH-Information-AddListIE-PSCH-ReconfRqst	ProtocolIE-ID ::= 161
id-PDSCH-Information-ModifyListIE-PSCH-ReconfRqst	ProtocolIE-ID ::= 162
id-PDSCHSets-AddList-PSCH-ReconfRqst	ProtocolIE-ID ::= 163
id-PDSCHSets-DeleteList-PSCH-ReconfRqst	ProtocolIE-ID ::= 164
id-PDSCHSets-ModifyList-PSCH-ReconfRqst	ProtocolIE-ID ::= 165
id-PICH-Information	ProtocolIE-ID ::= 166
id-PICH-Parameters-CTCH-ReconfRqstTDD	ProtocolIE-ID ::= 168
id-PowerAdjustmentType	ProtocolIE-ID ::= 169
id-PRACH-Information	ProtocolIE-ID ::= 170
id-PrimaryCCPCH-Information-Cell-ReconfRqstFDD	ProtocolIE-ID ::= 175
id-PrimaryCCPCH-Information-Cell-SetupRqstFDD	ProtocolIE-ID ::= 176
id-PrimaryCPICH-Information-Cell-ReconfRqstFDD	ProtocolIE-ID ::= 177
id-PrimaryCPICH-Information-Cell-SetupRqstFDD	ProtocolIE-ID ::= 178
id-PrimarySCH-Information-Cell-ReconfRqstFDD	ProtocolIE-ID ::= 179
id-PrimarySCH-Information-Cell-SetupRqstFDD	ProtocolIE-ID ::= 180
id-PrimaryScramblingCode	ProtocolIE-ID ::= 181
id-SCH-Information-Cell-ReconfRqstTDD	ProtocolIE-ID ::= 183
id-SCH-Information-Cell-SetupRqstTDD	ProtocolIE-ID ::= 184
id-PUSCH-Information-AddListIE-PSCH-ReconfRqst	ProtocolIE-ID ::= 185
id-PUSCH-Information-ModifyListIE-PSCH-ReconfRqst	ProtocolIE-ID ::= 186
id-PUSCHSets-AddList-PSCH-ReconfRqst	ProtocolIE-ID ::= 187
id-PUSCHSets-DeleteList-PSCH-ReconfRqst	ProtocolIE-ID ::= 188
id-PUSCHSets-ModifyList-PSCH-ReconfRqst	ProtocolIE-ID ::= 189
id-RACH-Information	ProtocolIE-ID ::= 190
id-RACH-ParametersItem-CTCH-SetupRqstFDD	ProtocolIE-ID ::= 196
id-RACH-ParameterItem-CTCH-SetupRqstTDD	ProtocolIE-ID ::= 197
id-ReportCharacteristics	ProtocolIE-ID ::= 198
id-Reporting-Object-RL-FailureInd	ProtocolIE-ID ::= 199
id-Reporting-Object-RL-RestoreInd	ProtocolIE-ID ::= 200
id-RL-InformationItem-DM-Rprt	ProtocolIE-ID ::= 202
id-RL-InformationItem-DM-Rqst	ProtocolIE-ID ::= 203
id-RL-InformationItem-DM-Rsp	ProtocolIE-ID ::= 204
id-RL-InformationItem-RL-AdditionRqstFDD	ProtocolIE-ID ::= 205
id-RL-informationItem-RL-DeletionRqst	ProtocolIE-ID ::= 206
id-RL-InformationItem-RL-FailureInd	ProtocolIE-ID ::= 207
id-RL-InformationItem-RL-PreemptRequiredInd	ProtocolIE-ID ::= 286
id-RL-InformationItem-RL-ReconfPrepFDD	ProtocolIE-ID ::= 208
id-RL-InformationItem-RL-ReconfRqstFDD	ProtocolIE-ID ::= 209
id-RL-InformationItem-RL-RestoreInd	ProtocolIE-ID ::= 210
id-RL-InformationItem-RL-SetupRqstFDD	ProtocolIE-ID ::= 211
id-RL-InformationList-RL-AdditionRqstFDD	ProtocolIE-ID ::= 212



id-RL-informationList-RL-DeletionRqst	ProtocolIE-ID ::= 213
id-RL-InformationList-RL-PreemptRequiredInd	ProtocolIE-ID ::= 237
id-RL-InformationList-RL-ReconfPrepFDD	ProtocolIE-ID ::= 214
id-RL-InformationList-RL-ReconfRqstFDD	ProtocolIE-ID ::= 215
id-RL-InformationList-RL-SetupRqstFDD	ProtocolIE-ID ::= 216
id-RL-InformationResponseItem-RL-AdditionRspFDD	ProtocolIE-ID ::= 217
id-RL-InformationResponseItem-RL-ReconfReady	ProtocolIE-ID ::= 218
id-RL-InformationResponseItem-RL-ReconfRsp	ProtocolIE-ID ::= 219
id-RL-InformationResponseItem-RL-SetupRspFDD	ProtocolIE-ID ::= 220
id-RL-InformationResponseList-RL-AdditionRspFDD	ProtocolIE-ID ::= 221
id-RL-InformationResponseList-RL-ReconfReady	ProtocolIE-ID ::= 222
id-RL-InformationResponseList-RL-ReconfRsp	ProtocolIE-ID ::= 223
id-RL-InformationResponseList-RL-SetupRspFDD	ProtocolIE-ID ::= 224
id-RL-InformationResponse-RL-AdditionRspTDD	ProtocolIE-ID ::= 225
id-RL-InformationResponse-RL-SetupRspTDD	ProtocolIE-ID ::= 226
id-RL-Information-RL-AdditionRqstTDD	ProtocolIE-ID ::= 227
id-RL-Information-RL-ReconfRqstTDD	ProtocolIE-ID ::= 228
id-RL-Information-RL-ReconfPrepTDD	ProtocolIE-ID ::= 229
id-RL-Information-RL-SetupRqstTDD	ProtocolIE-ID ::= 230
id-RL-ReconfigurationFailureItem-RL-ReconfFailure	ProtocolIE-ID ::= 236
id-RL-Set-InformationItem-DM-Rprt	ProtocolIE-ID ::= 238
id-RL-Set-InformationItem-DM-Rsp	ProtocolIE-ID ::= 240
id-RL-Set-InformationItem-RL-FailureInd	ProtocolIE-ID ::= 241
id-RL-Set-InformationItem-RL-RestoreInd	ProtocolIE-ID ::= 242
id-S-CCPCH-Information	ProtocolIE-ID ::= 247
id-S-CPICH-Information	ProtocolIE-ID ::= 249
id-SCH-Information	ProtocolIE-ID ::= 251
id-S-SCH-Information	ProtocolIE-ID ::= 253
id-Secondary-CCPCHListIE-CTCH-ReconfRqstTDD	ProtocolIE-ID ::= 257
id-Secondary-CCPCH-parameterListIE-CTCH-SetupRqstTDD	ProtocolIE-ID ::= 258
id-Secondary-CCPCH-Parameters-CTCH-ReconfRqstTDD	ProtocolIE-ID ::= 259
id-SecondaryCPICH-InformationItem-Cell-ReconfRqstFDD	ProtocolIE-ID ::= 260
id-SecondaryCPICH-InformationItem-Cell-SetupRqstFDD	ProtocolIE-ID ::= 261
id-SecondaryCPICH-InformationList-Cell-ReconfRqstFDD	ProtocolIE-ID ::= 262
id-SecondaryCPICH-InformationList-Cell-SetupRqstFDD	ProtocolIE-ID ::= 263
id-SecondarySCH-Information-Cell-ReconfRqstFDD	ProtocolIE-ID ::= 264
id-SecondarySCH-Information-Cell-SetupRqstFDD	ProtocolIE-ID ::= 265
id-SegmentInformationListIE-SystemInfoUpdate	ProtocolIE-ID ::= 266
id-SFN	ProtocolIE-ID ::= 268
id-SignallingBearerRequestIndicator	ProtocolIE-ID ::= 138
id-ShutdownTimer	ProtocolIE-ID ::= 269
id-Start-Of-Audit-Sequence-Indicator	ProtocolIE-ID ::= 114
id-Successful-RL-InformationRespItem-RL-AdditionFailureFDD	ProtocolIE-ID ::= 270
id-Successful-RL-InformationRespItem-RL-SetupFailureFDD	ProtocolIE-ID ::= 271
id-SyncCase	ProtocolIE-ID ::= 274
id-SyncCaseIndicatorItem-Cell-SetupRqstTDD-PSCH	ProtocolIE-ID ::= 275
id-T-Cell	ProtocolIE-ID ::= 276
id-TargetCommunicationControlPortID	ProtocolIE-ID ::= 139
id-TimeSlotConfigurationList-Cell-ReconfRqstTDD	ProtocolIE-ID ::= 277
id-TimeSlotConfigurationList-Cell-SetupRqstTDD	ProtocolIE-ID ::= 278
id-TransmissionDiversityApplied	ProtocolIE-ID ::= 279
id-TypeOfError	ProtocolIE-ID ::= 508
id-UARFCNforNt	ProtocolIE-ID ::= 280

id-UARFCNforNd  
 id-UARFCNforNu  
 id-UL-CCTrCH-InformationItem-RL-SetupRqstTDD  
 id-UL-CCTrCH-InformationList-RL-AdditionRqstTDD  
 id-UL-CCTrCH-InformationList-RL-SetupRqstTDD  
 id-UL-DPCH-InformationItem-RL-AdditionRqstTDD  
 id-UL-DPCH-InformationList-RL-SetupRqstTDD  
 id-UL-DPCH-Information-RL-ReconfPrepFDD  
 id-UL-DPCH-Information-RL-ReconfRqstFDD  
 id-UL-DPCH-Information-RL-SetupRqstFDD  
 id-Unsuccessful-RL-InformationRespItem-RL-AdditionFailureFDD  
 id-Unsuccessful-RL-InformationRespItem-RL-SetupFailureFDD  
 id-Unsuccessful-RL-InformationResp-RL-AdditionFailureTDD  
 id-Unsuccessful-RL-InformationResp-RL-SetupFailureTDD  
 id-USCH-Information-Add  
 id-USCH-Information-DeleteList-RL-ReconfPrepTDD  
 id-USCH-Information-ModifyList-RL-ReconfPrepTDD  
 id-USCH-InformationResponse  
 id-USCH-Information  
 id-USCH-RearrangeList-Bearer-RearrangeInd  
 id-Active-Pattern-Sequence-Information  
 id-AICH-ParametersListIE-CTCH-ReconfRqstFDD  
 id-AdjustmentRatio  
 id-AP-AICH-Information  
 id-AP-AICH-ParametersListIE-CTCH-ReconfRqstFDD  
 id-FACH-ParametersListIE-CTCH-ReconfRqstFDD  
 id-CauseLevel-PSCH-ReconfFailure  
 id-CauseLevel-RL-AdditionFailureFDD  
 id-CauseLevel-RL-AdditionFailureTDD  
 id-CauseLevel-RL-ReconfFailure  
 id-CauseLevel-RL-SetupFailureFDD  
 id-CauseLevel-RL-SetupFailureTDD  
 id-CDCA-ICH-Information  
 id-CDCA-ICH-ParametersListIE-CTCH-ReconfRqstFDD  
 id-Closed-Loop-Timing-Adjustment-Mode  
 id-CommonPhysicalChannelType-CTCH-ReconfRqstFDD  
 id-Compressed-Mode-Deactivation-Flag  
 id-CPCH-Information  
 id-CPCH-Parameters-CTCH-SetupRsp  
 id-CPCH-ParametersListIE-CTCH-ReconfRqstFDD  
 id-DL-CCTrCH-InformationAddList-RL-ReconfPrepTDD  
 id-DL-CCTrCH-InformationDeleteItem-RL-ReconfRqstTDD  
 id-DL-CCTrCH-InformationDeleteList-RL-ReconfPrepTDD  
 id-DL-CCTrCH-InformationDeleteList-RL-ReconfRqstTDD  
 id-DL-CCTrCH-InformationModifyItem-RL-ReconfRqstTDD  
 id-DL-CCTrCH-InformationModifyList-RL-ReconfPrepTDD  
 id-DL-CCTrCH-InformationModifyList-RL-ReconfRqstTDD  
 id-DL-DPCH-InformationAddListIE-RL-ReconfPrepTDD  
 id-DL-DPCH-InformationModify-AddListIE-RL-ReconfPrepTDD  
 id-DL-DPCH-InformationModify-DeleteListIE-RL-ReconfPrepTDD  
 id-DL-DPCH-InformationModify-ModifyListIE-RL-ReconfPrepTDD  
 id-DL-TPC-Pattern01Count  
 id-DPC-Mode

ProtocolIE-ID ::= 281  
 ProtocolIE-ID ::= 282  
 ProtocolIE-ID ::= 284  
 ProtocolIE-ID ::= 285  
 ProtocolIE-ID ::= 288  
 ProtocolIE-ID ::= 289  
 ProtocolIE-ID ::= 291  
 ProtocolIE-ID ::= 293  
 ProtocolIE-ID ::= 294  
 ProtocolIE-ID ::= 295  
 ProtocolIE-ID ::= 296  
 ProtocolIE-ID ::= 297  
 ProtocolIE-ID ::= 300  
 ProtocolIE-ID ::= 301  
 ProtocolIE-ID ::= 302  
 ProtocolIE-ID ::= 304  
 ProtocolIE-ID ::= 306  
 ProtocolIE-ID ::= 309  
 ProtocolIE-ID ::= 310  
 ProtocolIE-ID ::= 141  
 ProtocolIE-ID ::= 315  
 ProtocolIE-ID ::= 316  
 ProtocolIE-ID ::= 317  
 ProtocolIE-ID ::= 320  
 ProtocolIE-ID ::= 322  
 ProtocolIE-ID ::= 323  
 ProtocolIE-ID ::= 324  
 ProtocolIE-ID ::= 325  
 ProtocolIE-ID ::= 326  
 ProtocolIE-ID ::= 327  
 ProtocolIE-ID ::= 328  
 ProtocolIE-ID ::= 329  
 ProtocolIE-ID ::= 330  
 ProtocolIE-ID ::= 332  
 ProtocolIE-ID ::= 333  
 ProtocolIE-ID ::= 334  
 ProtocolIE-ID ::= 335  
 ProtocolIE-ID ::= 336  
 ProtocolIE-ID ::= 342  
 ProtocolIE-ID ::= 343  
 ProtocolIE-ID ::= 346  
 ProtocolIE-ID ::= 347  
 ProtocolIE-ID ::= 348  
 ProtocolIE-ID ::= 349  
 ProtocolIE-ID ::= 350  
 ProtocolIE-ID ::= 351  
 ProtocolIE-ID ::= 352  
 ProtocolIE-ID ::= 353  
 ProtocolIE-ID ::= 355  
 ProtocolIE-ID ::= 356  
 ProtocolIE-ID ::= 357  
 ProtocolIE-ID ::= 358  
 ProtocolIE-ID ::= 450

id-DPCHConstant  
 id-DSCH-FDD-Common-Information  
 id-EnhancedDSCHPC  
 id-EnhancedDSCHPCIndicator  
 id-FACH-ParametersList-CTCH-SetupRsp  
 id-Limited-power-increase-information-Cell-SetupRqstFDD  
 id-PCH-Parameters-CTCH-SetupRsp  
 id-PCH-ParametersItem-CTCH-ReconfRqstFDD  
 id-PCPCH-Information  
 id-PICH-ParametersItem-CTCH-ReconfRqstFDD  
 id-PRACHConstant  
 id-PRACH-ParametersListIE-CTCH-ReconfRqstFDD  
 id-PUSCHConstant  
 id-RACH-Parameters-CTCH-SetupRsp  
 id-SSDT-CellIDforEDSCHPC  
 id-Synchronisation-Configuration-Cell-ReconfRqst  
 id-Synchronisation-Configuration-Cell-SetupRqst  
 id-Transmission-Gap-Pattern-Sequence-Information  
 id-UL-CCTrCH-InformationAddList-RL-ReconfPrepTDD  
 id-UL-CCTrCH-InformationDeleteItem-RL-ReconfRqstTDD  
 id-UL-CCTrCH-InformationDeleteList-RL-ReconfPrepTDD  
 id-UL-CCTrCH-InformationDeleteList-RL-ReconfRqstTDD  
 id-UL-CCTrCH-InformationModifyItem-RL-ReconfRqstTDD  
 id-UL-CCTrCH-InformationModifyList-RL-ReconfPrepTDD  
 id-UL-CCTrCH-InformationModifyList-RL-ReconfRqstTDD  
 id-UL-DPCH-InformationAddListIE-RL-ReconfPrepTDD  
 id-UL-DPCH-InformationModify-AddListIE-RL-ReconfPrepTDD  
 id-UL-DPCH-InformationModify-DeleteListIE-RL-ReconfPrepTDD  
 id-UL-DPCH-InformationModify-ModifyListIE-RL-ReconfPrepTDD  
 id-Unsuccessful-PDSCHSetItem-PSCH-ReconfFailureTDD  
 id-Unsuccessful-PUSCHSetItem-PSCH-ReconfFailureTDD  
 id-CommunicationContextInfoItem-Reset  
 id-CommunicationControlPortInfoItem-Reset  
 id-ResetIndicator  
 id-TFCI2-Bearer-Information-RL-SetupRqstFDD  
 id-TFCI2-BearerSpecificInformation-RL-ReconfPrepFDD  
 id-TFCI2-BearerInformationResponse  
 id-TFCI2BearerRequestIndicator  
 id-TimingAdvanceApplied  
 id-CFNReportingIndicator  
 id-SFNReportingIndicator  
 id-InnerLoopDLPCStatus  
 id-TimeslotISCPInfo  
 id-PICH-ParametersItem-CTCH-SetupRqstTDD  
 id-PRACH-ParametersItem-CTCH-SetupRqstTDD  
 id-CCTrCH-InformationItem-RL-FailureInd  
 id-CCTrCH-InformationItem-RL-RestoreInd  
 id-CauseLevel-SyncAdjustmntFailureTDD  
 id-CellAdjustmentInfo-SyncAdjustmntRqstTDD  
 id-CellAdjustmentInfoItem-SyncAdjustmntRqstTDD  
 id-CellSyncBurstInfoList-CellSyncReconfRqstTDD  
 id-CellSyncBurstTransInit-CellSyncInitiationRqstTDD  
 id-CellSyncBurstMeasureInit-CellSyncInitiationRqstTDD

ProtocolIE-ID ::= 359  
 ProtocolIE-ID ::= 94  
 ProtocolIE-ID ::= 110  
 ProtocolIE-ID ::= 111  
 ProtocolIE-ID ::= 362  
 ProtocolIE-ID ::= 369  
 ProtocolIE-ID ::= 374  
 ProtocolIE-ID ::= 375  
 ProtocolIE-ID ::= 376  
 ProtocolIE-ID ::= 380  
 ProtocolIE-ID ::= 381  
 ProtocolIE-ID ::= 383  
 ProtocolIE-ID ::= 384  
 ProtocolIE-ID ::= 385  
 ProtocolIE-ID ::= 443  
 ProtocolIE-ID ::= 393  
 ProtocolIE-ID ::= 394  
 ProtocolIE-ID ::= 395  
 ProtocolIE-ID ::= 396  
 ProtocolIE-ID ::= 397  
 ProtocolIE-ID ::= 398  
 ProtocolIE-ID ::= 399  
 ProtocolIE-ID ::= 400  
 ProtocolIE-ID ::= 401  
 ProtocolIE-ID ::= 402  
 ProtocolIE-ID ::= 403  
 ProtocolIE-ID ::= 405  
 ProtocolIE-ID ::= 406  
 ProtocolIE-ID ::= 407  
 ProtocolIE-ID ::= 408  
 ProtocolIE-ID ::= 409  
 ProtocolIE-ID ::= 412  
 ProtocolIE-ID ::= 414  
 ProtocolIE-ID ::= 416  
 ProtocolIE-ID ::= 417  
 ProtocolIE-ID ::= 418  
 ProtocolIE-ID ::= 419  
 ProtocolIE-ID ::= 142  
 ProtocolIE-ID ::= 287  
 ProtocolIE-ID ::= 6  
 ProtocolIE-ID ::= 11  
 ProtocolIE-ID ::= 12  
 ProtocolIE-ID ::= 283  
 ProtocolIE-ID ::= 167  
 ProtocolIE-ID ::= 20  
 ProtocolIE-ID ::= 46  
 ProtocolIE-ID ::= 47  
 ProtocolIE-ID ::= 420  
 ProtocolIE-ID ::= 421  
 ProtocolIE-ID ::= 494  
 ProtocolIE-ID ::= 482  
 ProtocolIE-ID ::= 422  
 ProtocolIE-ID ::= 423

id-CellSyncBurstTransReconfiguration-CellSyncReconfRqstTDD	ProtocolIE-ID ::= 424
id-CellSyncBurstMeasReconfiguration-CellSyncReconfRqstTDD	ProtocolIE-ID ::= 425
id-CellSyncBurstTransInfoList-CellSyncReconfRqstTDD	ProtocolIE-ID ::= 426
id-CellSyncBurstMeasInfoList-CellSyncReconfRqstTDD	ProtocolIE-ID ::= 427
id-CellSyncBurstTransReconfInfo-CellSyncReconfRqstTDD	ProtocolIE-ID ::= 428
id-CellSyncInfo-CellSyncReprtTDD	ProtocolIE-ID ::= 429
id-CSBTransmissionID	ProtocolIE-ID ::= 430
id-CSBMeasurementID	ProtocolIE-ID ::= 431
id-IntStdPhCellSyncInfoItem-CellSyncReprtTDD	ProtocolIE-ID ::= 432
id-NCyclesPerSFNperiod	ProtocolIE-ID ::= 433
id-NRepetitionsPerCyclePeriod	ProtocolIE-ID ::= 434
id-SyncFrameNumber	ProtocolIE-ID ::= 437
id-SynchronisationReportType	ProtocolIE-ID ::= 438
id-SynchronisationReportCharacteristics	ProtocolIE-ID ::= 439
id-Unsuccessful-cell-InformationRespItem-SyncAdjustmntFailureTDD	ProtocolIE-ID ::= 440
id-LateEntranceCellSyncInfoItem-CellSyncReprtTDD	ProtocolIE-ID ::= 119
id-ReferenceClockAvailability	ProtocolIE-ID ::= 435
id-ReferenceSFNoffset	ProtocolIE-ID ::= 436
id-InformationExchangeID	ProtocolIE-ID ::= 444
id-InformationExchangeObjectType-InfEx-Rqst	ProtocolIE-ID ::= 445
id-InformationType	ProtocolIE-ID ::= 446
id-InformationReportCharacteristics	ProtocolIE-ID ::= 447
id-InformationExchangeObjectType-InfEx-Rsp	ProtocolIE-ID ::= 448
id-InformationExchangeObjectType-InfEx-Rprt	ProtocolIE-ID ::= 449
id-IPDLParameter-Information-Cell-ReconfRqstFDD	ProtocolIE-ID ::= 451
id-IPDLParameter-Information-Cell-SetupRqstFDD	ProtocolIE-ID ::= 452
id-IPDLParameter-Information-Cell-ReconfRqstTDD	ProtocolIE-ID ::= 453
id-IPDLParameter-Information-Cell-SetupRqstTDD	ProtocolIE-ID ::= 454
id-DL-DPCH-LCR-Information-RL-SetupRqstTDD	ProtocolIE-ID ::= 74
id-DwPCH-LCR-Information	ProtocolIE-ID ::= 78
id-DwPCH-LCR-InformationList-AuditRsp	ProtocolIE-ID ::= 90
id-DwPCH-LCR-Information-Cell-SetupRqstTDD	ProtocolIE-ID ::= 97
id-DwPCH-LCR-Information-Cell-ReconfRqstTDD	ProtocolIE-ID ::= 99
id-DwPCH-LCR-Information-ResourceStatusInd	ProtocolIE-ID ::= 101
id-maxFACH-Power-LCR-CTCH-SetupRqstTDD	ProtocolIE-ID ::= 154
id-maxFACH-Power-LCR-CTCH-ReconfRqstTDD	ProtocolIE-ID ::= 174
id-FPACH-LCR-Information	ProtocolIE-ID ::= 290
id-FPACH-LCR-Information-AuditRsp	ProtocolIE-ID ::= 292
id-FPACH-LCR-InformationList-AuditRsp	ProtocolIE-ID ::= 22
id-FPACH-LCR-InformationList-ResourceStatusInd	ProtocolIE-ID ::= 311
id-FPACH-LCR-Parameters-CTCH-SetupRqstTDD	ProtocolIE-ID ::= 312
id-FPACH-LCR-Parameters-CTCH-ReconfRqstTDD	ProtocolIE-ID ::= 314
id-PCCPCH-LCR-Information-Cell-SetupRqstTDD	ProtocolIE-ID ::= 456
id-PCH-Power-LCR-CTCH-SetupRqstTDD	ProtocolIE-ID ::= 457
id-PCH-Power-LCR-CTCH-ReconfRqstTDD	ProtocolIE-ID ::= 458
id-PICH-LCR-Parameters-CTCH-SetupRqstTDD	ProtocolIE-ID ::= 459
id-PRACH-LCR-ParametersList-CTCH-SetupRqstTDD	ProtocolIE-ID ::= 461
id-RL-InformationResponse-LCR-RL-SetupRspTDD	ProtocolIE-ID ::= 463
id-Secondary-CCPCH-LCR-parameterList-CTCH-SetupRqstTDD	ProtocolIE-ID ::= 465
id-TimeSlot	ProtocolIE-ID ::= 495
id-TimeSlotConfigurationList-LCR-Cell-ReconfRqstTDD	ProtocolIE-ID ::= 466
id-TimeSlotConfigurationList-LCR-Cell-SetupRqstTDD	ProtocolIE-ID ::= 467
id-TimeslotISCP-LCR-InfoList-RL-SetupRqstTDD	ProtocolIE-ID ::= 468

id-TimeSlotLCR-CM-Rqst	ProtocolIE-ID ::= 469
id-UL-DPCH-LCR-Information-RL-SetupRqstTDD	ProtocolIE-ID ::= 470
id-DL-DPCH-InformationItem-LCR-RL-AdditionRqstTDD	ProtocolIE-ID ::= 472
id-UL-DPCH-InformationItem-LCR-RL-AdditionRqstTDD	ProtocolIE-ID ::= 473
id-TimeslotISCP-InformationList-LCR-RL-AdditionRqstTDD	ProtocolIE-ID ::= 474
id-DL-DPCH-LCR-InformationAddList-RL-ReconfPrepTDD	ProtocolIE-ID ::= 475
id-DL-DPCH-LCR-InformationModify-AddList-RL-ReconfPrepTDD	ProtocolIE-ID ::= 477
id-DL-Timeslot-LCR-InformationModify-ModifyList-RL-ReconfPrepTDD	ProtocolIE-ID ::= 479
id-TimeslotISCPInfoList-LCR-DL-PC-RqstTDD	ProtocolIE-ID ::= 480
id-UL-DPCH-LCR-InformationAddListIE-RL-ReconfPrepTDD	ProtocolIE-ID ::= 481
id-UL-DPCH-LCR-InformationModify-AddList	ProtocolIE-ID ::= 483
id-UL-TimeslotLCR-Information-RL-ReconfPrepTDD	ProtocolIE-ID ::= 485
id-UL-SIRTarget	ProtocolIE-ID ::= 510
id-PDSCH-AddInformation-LCR-PSCH-ReconfRqst	ProtocolIE-ID ::= 486
id-PDSCH-AddInformation-LCR-AddListIE-PSCH-ReconfRqst	ProtocolIE-ID ::= 487
id-PDSCH-Information-Cell-SetupRqstFDD	ProtocolIE-ID ::= 26
id-PDSCH-Information-Cell-ReconfRqstFDD	ProtocolIE-ID ::= 27
id-PDSCH-ModifyInformation-LCR-PSCH-ReconfRqst	ProtocolIE-ID ::= 488
id-PDSCH-ModifyInformation-LCR-ModifyListIE-PSCH-ReconfRqst	ProtocolIE-ID ::= 489
id-PUSCH-AddInformation-LCR-PSCH-ReconfRqst	ProtocolIE-ID ::= 490
id-PUSCH-AddInformation-LCR-AddListIE-PSCH-ReconfRqst	ProtocolIE-ID ::= 491
id-PUSCH-ModifyInformation-LCR-PSCH-ReconfRqst	ProtocolIE-ID ::= 492
id-PUSCH-ModifyInformation-LCR-ModifyListIE-PSCH-ReconfRqst	ProtocolIE-ID ::= 493
id-timeslotInfo-CellSyncInitiationRqstTDD	ProtocolIE-ID ::= 496
id-SyncReportType-CellSyncReprtTDD	ProtocolIE-ID ::= 497
id-Power-Local-Cell-Group-InformationItem-AuditRsp	ProtocolIE-ID ::= 498
id-Power-Local-Cell-Group-InformationItem-ResourceStatusInd	ProtocolIE-ID ::= 499
id-Power-Local-Cell-Group-InformationItem2-ResourceStatusInd	ProtocolIE-ID ::= 500
id-Power-Local-Cell-Group-InformationList-AuditRsp	ProtocolIE-ID ::= 501
id-Power-Local-Cell-Group-InformationList-ResourceStatusInd	ProtocolIE-ID ::= 502
id-Power-Local-Cell-Group-InformationList2-ResourceStatusInd	ProtocolIE-ID ::= 503
id-Power-Local-Cell-Group-ID	ProtocolIE-ID ::= 504
id-PUSCH-Info-DM-Rqst	ProtocolIE-ID ::= 505
id-PUSCH-Info-DM-Rsp	ProtocolIE-ID ::= 506
id-PUSCH-Info-DM-Rprt	ProtocolIE-ID ::= 507
id-InitDL-Power	ProtocolIE-ID ::= 509
id-cellSyncBurstRepetitionPeriod	ProtocolIE-ID ::= 511
id-ReportCharacteristicsType-OnModification	ProtocolIE-ID ::= 512
id-SFNFSNMeasurementValueInformation	ProtocolIE-ID ::= 513
id-SFNFSNMeasurementThresholdInformation	ProtocolIE-ID ::= 514
id-TUTRANGPSMeasurementValueInformation	ProtocolIE-ID ::= 515
id-TUTRANGPSMeasurementThresholdInformation	ProtocolIE-ID ::= 516
id-Rx-Timing-Deviation-Value-LCR	ProtocolIE-ID ::= 520
id-RL-InformationResponse-LCR-RL-AdditionRspTDD	ProtocolIE-ID ::= 51
id-DL-PowerBalancing-Information	ProtocolIE-ID ::= 28
id-DL-PowerBalancing-ActivationIndicator	ProtocolIE-ID ::= 29
id-DL-PowerBalancing-UpdatedIndicator	ProtocolIE-ID ::= 30
id-CCTrCH-Initial-DL-Power-RL-SetupRqstTDD	ProtocolIE-ID ::= 517
id-CCTrCH-Initial-DL-Power-RL-AdditionRqstTDD	ProtocolIE-ID ::= 518
id-CCTrCH-Initial-DL-Power-RL-ReconfPrepTDD	ProtocolIE-ID ::= 519
id-IPDLParameter-Information-LCR-Cell-SetupRqstTDD	ProtocolIE-ID ::= 41
id-IPDLParameter-Information-LCR-Cell-ReconfRqstTDD	ProtocolIE-ID ::= 42
id-HS-PDSCH-HS-SCCH-MaxPower-PSCH-ReconfRqst	ProtocolIE-ID ::= 522

id-HS-PDSCH-HS-SCCH-ScramblingCode-PSCH-ReconfRqst  
 id-HS-PDSCH-FDD-Code-Information-PSCH-ReconfRqst  
 id-HS-SCCH-FDD-Code-Information-PSCH-ReconfRqst  
 id-HS-PDSCH-TDD-Information-PSCH-ReconfRqst  
 id-Add-To-HS-SCCH-Resource-Pool-PSCH-ReconfRqst  
 id-Modify-HS-SCCH-Resource-Pool-PSCH-ReconfRqst  
 id-Delete-From-HS-SCCH-Resource-Pool-PSCH-ReconfRqst  
 id-bindingID  
 id-RL-Specific-DCH-Info  
 id-transportlayeraddress  
 id-DelayedActivation  
 id-DelayedActivationList-RL-ActivationCmdFDD  
 id-DelayedActivationInformation-RL-ActivationCmdFDD  
 id-DelayedActivationList-RL-ActivationCmdTDD  
 id-DelayedActivationInformation-RL-ActivationCmdTDD  
 id-neighbouringTDDCellMeasurementInformationLCR  
 id-SYNCDLCodeId-TransInitLCR-CellSyncInitiationRqstTDD  
 id-SYNCDLCodeId-MeasureInitLCR-CellSyncInitiationRqstTDD  
 id-SYNCDLCodeIdTransReconfInfoLCR-CellSyncReconfRqstTDD  
 id-SYNCDLCodeIdMeasReconfigurationLCR-CellSyncReconfRqstTDD  
 id-SYNCDLCodeIdMeasInfoList-CellSyncReconfRqstTDD  
 id-SyncDLCodeIdsMeasInfoList-CellSyncReprTDD  
 id-SyncDLCodeIdThreInfoLCR  
 id-NSubCyclesPerCyclePeriod-CellSyncReconfRqstTDD  
 id-DwPCH-Power  
 id-AccumulatedClockupdate-CellSyncReprTDD  
 id-Angle-Of-Arrival-Value-LCR  
 id-HSDSCH-FDD-Information  
 id-HSDSCH-FDD-Information-Response  
 id-HSDSCH-Information-to-Modify  
 id-HSDSCH-RNTI  
 id-HSDSCH-TDD-Information  
 id-HSDSCH-TDD-Information-Response  
 id-HSPDSCH-RL-ID  
 id-PrimCCPCH-RSCP-DL-PC-RqstTDD  
 id-Qth-Parameter  
 id-PDSCH-RL-ID  
 id-HSDSCH-RearrangeList-Bearer-RearrangeInd  
 id-UL-Synchronisation-Parameters-LCR  
 id-HSDSCH-FDD-Update-Information  
 id-HSDSCH-TDD-Update-Information  
 id-DL-DPCH-TimeSlotFormat-LCR-ModifyItem-RL-ReconfPrepTDD  
 id-UL-DPCH-TimeSlotFormat-LCR-ModifyItem-RL-ReconfPrepTDD  
 id-TDD-TPC-UplinkStepSize-LCR-RL-SetupRqstTDD  
 id-TDD-TPC-UplinkStepSize-LCR-RL-AdditionRqstTDD  
 id-TDD-TPC-DownlinkStepSize-RL-AdditionRqstTDD  
 id-TDD-TPC-UplinkStepSize-InformationAdd-LCR-RL-ReconfPrepTDD  
 id-TDD-TPC-UplinkStepSize-InformationModify-LCR-RL-ReconfPrepTDD  
 id-TDD-TPC-DownlinkStepSize-InformationModify-RL-ReconfPrepTDD  
 id-TDD-TPC-DownlinkStepSize-InformationAdd-RL-ReconfPrepTDD  
 id-CCTrCH-Maximum-DL-Power-RL-SetupRqstTDD  
 id-CCTrCH-Minimum-DL-Power-RL-SetupRqstTDD  
 id-CCTrCH-Maximum-DL-Power-RL-AdditionRqstTDD

ProtocolIE-ID ::= 523  
 ProtocolIE-ID ::= 524  
 ProtocolIE-ID ::= 525  
 ProtocolIE-ID ::= 526  
 ProtocolIE-ID ::= 527  
 ProtocolIE-ID ::= 528  
 ProtocolIE-ID ::= 529  
 ProtocolIE-ID ::= 102  
 ProtocolIE-ID ::= 103  
 ProtocolIE-ID ::= 104  
 ProtocolIE-ID ::= 231  
 ProtocolIE-ID ::= 232  
 ProtocolIE-ID ::= 233  
 ProtocolIE-ID ::= 234  
 ProtocolIE-ID ::= 235  
 ProtocolIE-ID ::= 58  
 ProtocolIE-ID ::= 543  
 ProtocolIE-ID ::= 544  
 ProtocolIE-ID ::= 545  
 ProtocolIE-ID ::= 546  
 ProtocolIE-ID ::= 547  
 ProtocolIE-ID ::= 548  
 ProtocolIE-ID ::= 549  
 ProtocolIE-ID ::= 550  
 ProtocolIE-ID ::= 551  
 ProtocolIE-ID ::= 552  
 ProtocolIE-ID ::= 521  
 ProtocolIE-ID ::= 530  
 ProtocolIE-ID ::= 531  
 ProtocolIE-ID ::= 534  
 ProtocolIE-ID ::= 535  
 ProtocolIE-ID ::= 536  
 ProtocolIE-ID ::= 537  
 ProtocolIE-ID ::= 541  
 ProtocolIE-ID ::= 542  
 ProtocolIE-ID ::= 64  
 ProtocolIE-ID ::= 66  
 ProtocolIE-ID ::= 553  
 ProtocolIE-ID ::= 554  
 ProtocolIE-ID ::= 555  
 ProtocolIE-ID ::= 556  
 ProtocolIE-ID ::= 558  
 ProtocolIE-ID ::= 559  
 ProtocolIE-ID ::= 560  
 ProtocolIE-ID ::= 561  
 ProtocolIE-ID ::= 562  
 ProtocolIE-ID ::= 563  
 ProtocolIE-ID ::= 564  
 ProtocolIE-ID ::= 565  
 ProtocolIE-ID ::= 566  
 ProtocolIE-ID ::= 567  
 ProtocolIE-ID ::= 568  
 ProtocolIE-ID ::= 569

id-CCTrCH-Minimum-DL-Power-RL-AdditionRqstTDD	ProtocolIE-ID ::= 570
id-CCTrCH-Maximum-DL-Power-InformationAdd-RL-ReconfPrepTDD	ProtocolIE-ID ::= 571
id-CCTrCH-Minimum-DL-Power-InformationAdd-RL-ReconfPrepTDD	ProtocolIE-ID ::= 572
id-CCTrCH-Maximum-DL-Power-InformationModify-RL-ReconfPrepTDD	ProtocolIE-ID ::= 573
id-CCTrCH-Minimum-DL-Power-InformationModify-RL-ReconfPrepTDD	ProtocolIE-ID ::= 574
id-Maximum-DL-Power-Modify-LCR-InformationModify-RL-ReconfPrepTDD	ProtocolIE-ID ::= 575
id-Minimum-DL-Power-Modify-LCR-InformationModify-RL-ReconfPrepTDD	ProtocolIE-ID ::= 576
id-DL-DPCH-LCR-InformationModify-ModifyList-RL-ReconfRqstTDD	ProtocolIE-ID ::= 577
id-CCTrCH-Maximum-DL-Power-InformationModify-RL-ReconfRqstTDD	ProtocolIE-ID ::= 578
id-CCTrCH-Minimum-DL-Power-InformationModify-RL-ReconfRqstTDD	ProtocolIE-ID ::= 579
id-Initial-DL-Power-TimeslotLCR-InformationItem	ProtocolIE-ID ::= 580
id-Maximum-DL-Power-TimeslotLCR-InformationItem	ProtocolIE-ID ::= 581
id-Minimum-DL-Power-TimeslotLCR-InformationItem	ProtocolIE-ID ::= 582
<u>id-HS-DSCHProvidedBitRateValueInformation</u>	<u>ProtocolIE-ID ::= 583</u>
<u>id-HS-DSCHRequiredPowerValueInformation</u>	<u>ProtocolIE-ID ::= 585</u>
id-HS-DSCHRequiredPowerValue	ProtocolIE-ID ::= 586
id-TransmittedCarrierPowerOfAllCodesNotUsedForHS-PDSCHOrHS-SCCHTransmission	ProtocolIE-ID ::= 587
id-HS-SICH-Reception-Quality	ProtocolIE-ID ::= 588
id-HS-SICH-Reception-Quality-Measurement-Value	ProtocolIE-ID ::= 589
id-HSSICH-Info-DM-Rprt	ProtocolIE-ID ::= 590
id-HSSICH-Info-DM-Rqst	ProtocolIE-ID ::= 591
id-HSSICH-Info-DM-Rsp	ProtocolIE-ID ::= 592
id-Best-Cell-Portions-Value	ProtocolIE-ID ::= 593
id-Primary-CPICH-Usage-for-Channel-Estimation	ProtocolIE-ID ::= 594
id-Secondary-CPICH-Information-Change	ProtocolIE-ID ::= 595
id-NumberOfReportedCellPortions	ProtocolIE-ID ::= 596
id-CellPortion-InformationItem-Cell-SetupRqstFDD	ProtocolIE-ID ::= 597
id-CellPortion-InformationList-Cell-SetupRqstFDD	ProtocolIE-ID ::= 598
id-TimeslotISCP-LCR-InfoList-RL-ReconfPrepTDD	ProtocolIE-ID ::= 599
id-Secondary-CPICH-Information	ProtocolIE-ID ::= 600
id-Received-total-wide-band-power-For-CellPortion	ProtocolIE-ID ::= 601
id-Unidirectional-DCH-Indicator	ProtocolIE-ID ::= 602
id-TimingAdjustmentValueLCR	ProtocolIE-ID ::= 603
id-multipleRL-dl-DPCH-InformationList	ProtocolIE-ID ::= 604
id-multipleRL-dl-DPCH-InformationModifyList	ProtocolIE-ID ::= 605
id-multipleRL-ul-DPCH-InformationList	ProtocolIE-ID ::= 606
id-multipleRL-ul-DPCH-InformationModifyList	ProtocolIE-ID ::= 607
id-RL-ID	ProtocolIE-ID ::= 608
id-SAT-Info-Almanac-ExtItem	ProtocolIE-ID ::= 609
id-HSDPA-Capability	ProtocolIE-ID ::= 610
id-HSDSCH-Resources-Information-AuditRsp	ProtocolIE-ID ::= 611
id-HSDSCH-Resources-Information-ResourceStatusInd	ProtocolIE-ID ::= 612
id-HSDSCH-MACdFlows-to-Add	ProtocolIE-ID ::= 613
id-HSDSCH-MACdFlows-to-Delete	ProtocolIE-ID ::= 614
id-HSDSCH-Information-to-Modify-Unsynchronised	ProtocolIE-ID ::= 615
id-TnlQos	ProtocolIE-ID ::= 616
id-Received-total-wide-band-power-For-CellPortion-Value	ProtocolIE-ID ::= 617
id-Transmitted-Carrier-Power-For-CellPortion	ProtocolIE-ID ::= 618
id-Transmitted-Carrier-Power-For-CellPortion-Value	ProtocolIE-ID ::= 619
id-TransmittedCarrierPowerOfAllCodesNotUsedForHS-PDSCHOrHS-SCCHTransmissionCellPortion	ProtocolIE-ID ::= 620
id-TransmittedCarrierPowerOfAllCodesNotUsedForHS-PDSCHOrHS-SCCHTransmissionCellPortionValue	ProtocolIE-ID ::= 621
id-UpPTSInterferenceValue	ProtocolIE-ID ::= 622
id-PrimaryCCPCH-RSCP-Delta	ProtocolIE-ID ::= 623

**Release6**

id-MeasurementRecoveryBehavior  
id-MeasurementRecoveryReportingIndicator  
id-MeasurementRecoverySupportIndicator  
id-Tstd-indicator-CTCH-SetupRqstTDD

END

**25**

ProtocolIE-ID ::= 624  
ProtocolIE-ID ::= 625  
ProtocolIE-ID ::= 626  
ProtocolIE-ID ::= 627

**3GPP TS25.433 V6.2.0(2004-06)**