

**TSG RAN Meeting #19**  
**Birmingham, UK, 11 - 14 March 2003**

**RP-030070**

**Title** CRs (Rel-4 and Rel-5 Category A) to TS 25.423, 25.433 and 25.453 (Rel-5 only)  
on Correction for the Information Exchange Initiation procedure

**Source** TSG RAN WG3

**Agenda Item** 8.3.6

| RAN3 Tdoc | Spec   | curr. Vers. | new Vers. | REL   | CR  | Rev | Cat | Title  | Work item |
|-----------|--------|-------------|-----------|-------|-----|-----|-----|--|-----------|
| R3-030104 | 25.423 | 4.7.0       | 4.8.0     | REL-4 | 785 | -   | F   | Correction for the Information Exchange Initiation procedure | TEI4      |
| R3-030106 | 25.423 | 5.4.0       | 5.5.0     | REL-5 | 786 | -   | A   | Correction for the Information Exchange Initiation procedure | TEI4      |
| R3-030103 | 25.433 | 4.7.0       | 4.8.0     | REL-4 | 807 | -   | F   | Correction for the Information Exchange Initiation procedure | TEI4      |
| R3-030105 | 25.433 | 5.3.0       | 5.4.0     | REL-5 | 808 | -   | A   | Correction for the Information Exchange Initiation procedure | TEI4      |
| R3-030278 | 25.453 | 5.4.0       | 5.5.0     | REL-5 | 027 | -   | F   | Correction for the Information Exchange Initiation procedure | TEI4      |

## CHANGE REQUEST

⌘ **25.423 CR 785** ⌘ rev **-** ⌘ Current version: **4.7.0** ⌘

For **HELP** on using this form, see bottom of this page or look at the pop-up text over the ⌘ symbols.

**Proposed change affects:** UICC apps  ME  Radio Access Network  Core Network

|                        |   |                 |   |
|------------------------|---|-----------------|---|
| <b>Title:</b>          | ⌘ Correction for the Information Exchange Initiation procedure  |                 |   |
| <b>Source:</b>         | ⌘ RAN WG3   |                 |   |
| <b>Work item code:</b> | ⌘ TEI4  | <b>Date:</b>    | ⌘ 11/02/2003  |
| <b>Category:</b>       | ⌘ <b>F</b>  | <b>Release:</b> | ⌘ REL-4   |
|                        | Use <u>one</u> of the following categories:<br><b>F</b> (correction)<br><b>A</b> (corresponds to a correction in an earlier release)<br><b>B</b> (addition of feature),<br><b>C</b> (functional modification of feature)<br><b>D</b> (editorial modification)<br>Detailed explanations of the above categories can be found in 3GPP <a href="#">TR 21.900</a> . |                 | Use <u>one</u> of the following releases:<br>2 (GSM Phase 2)<br>R96 (Release 1996)<br>R97 (Release 1997)<br>R98 (Release 1998)<br>R99 (Release 1999)<br>Rel-4 (Release 4)<br>Rel-5 (Release 5)<br>Rel-6 (Release 6) |

|                                      |   |
|--------------------------------------|---|
| <b>Reason for change:</b>            | ⌘ Misalignment between the Response message and Information Report Characteristics section. In the Response message chapter is clearly stated that INFORMATION EXCHANGE INITIATION RESPONSE message shall contain the requested data value when Report Characteristic is "Periodic", but this statement is missing from the corresponding point in Report Characteristics section.  |
| <b>Summary of change:</b>            | ⌘ Misalignment between the Response message and Information Report Characteristics section corrected<br><br><u>Impact assessment towards the previous version of the specification (same release):</u><br><br>This CR has isolated impact towards the previous version of the specification (same release).<br><br>The impact can be considered isolated because it only affects the Information Exchange Initiation procedure. |
| <b>Consequences if not approved:</b> | ⌘ RNC is not aware when the first set of requested data value arrives   |

|                          |  |   |   |   |  |                          |                          |
|--------------------------|--|---|---|---|--|--------------------------|--------------------------|
| <b>Clauses affected:</b> | ⌘ 8.5.6.2  |   |   |   |  |                          |                          |
| <b>Other specs</b>       | <table border="1" style="display: inline-table; border-collapse: collapse;"> <tr> <td style="width: 20px; text-align: center;">Y</td> <td style="width: 20px; text-align: center;">N</td> </tr> <tr> <td style="text-align: center;">X</td> <td style="text-align: center;"></td> </tr> </table> Other core specifications | Y | N | X |  | ⌘ TS 25.433 v4.7.0 CR807 | ⌘ TS 25.433 v5.3.0 CR808 |
| Y                        | N  |   |   |   |  |                          |                          |
| X                        |  |   |   |   |  |                          |                          |

|                        |                                     |                                     |                     |
|------------------------|-------------------------------------|-------------------------------------|---------------------|
| <b>affected:</b>       | <input type="checkbox"/>            | <input type="checkbox"/>            |                     |
|                        | <input checked="" type="checkbox"/> | <input checked="" type="checkbox"/> | Test specifications |
|                        | <input checked="" type="checkbox"/> | <input checked="" type="checkbox"/> | O&M Specifications  |
| <b>Other comments:</b> | ⌘                                   |                                     |                     |

TS 25.423 v5.4.0 CR786  
 TS 25.453 v5.4.0 CR027

**How to create CRs using this form:**

Comprehensive information and tips about how to create CRs can be found at <http://www.3gpp.org/specs/CR.htm>. Below is a brief summary:

- 1) Fill out the above form. The symbols above marked ⌘ contain pop-up help information about the field that they are closest to.
- 2) Obtain the latest version for the release of the specification to which the change is proposed. Use the MS Word "revision marks" feature (also known as "track changes") when making the changes. All 3GPP specifications can be downloaded from the 3GPP server under <ftp://ftp.3gpp.org/specs/> For the latest version, look for the directory name with the latest date e.g. 2001-03 contains the specifications resulting from the March 2001 TSG meetings.
- 3) With "track changes" disabled, paste the entire CR form (use CTRL-A to select it) into the specification just in front of the clause containing the first piece of changed text. Delete those parts of the specification which are not relevant to the change request.

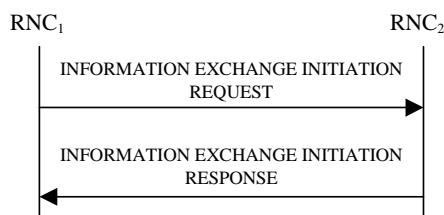
## 8.5.6 Information Exchange Initiation

### 8.5.6.1 General

This procedure is used by a RNC to request the initiation of an information exchange with another RNC.

This procedure uses the signalling bearer connection for the relevant Distant RNC Context.

### 8.5.6.2 Successful Operation



**Figure 30F: Information Exchange Initiation procedure, Successful Operation**

The procedure is initiated with an INFORMATION EXCHANGE INITIATION REQUEST message sent from RNC<sub>1</sub> to RNC<sub>2</sub>.

Upon receipt, the RNC<sub>2</sub> shall provide the requested information according to the parameters given in the request. Unless specified below, the meaning of the parameters are given in other specifications.

#### Information Report Characteristics:

The *Information Report Characteristics* IE indicates how the reporting of the information shall be performed.

If the *Information Report Characteristics* IE is set to "On Demand", the RNC<sub>2</sub> shall report the requested information immediately.

If the *Information Report Characteristics* IE is set to "Periodic", the RNC<sub>2</sub> shall [report the requested information immediately and then shall](#) periodically initiate the Information Reporting procedure for all the requested information, with the report frequency indicated by the *Information Report Periodicity* IE.

If the *Information Report Characteristics* IE is set to "On –Modification", the RNC<sub>2</sub> shall report the requested information immediately and then shall initiate the Information Reporting procedure in accordance to the following conditions:

- If the *Information Type Item* IE is set to "IPDL Parameters", the RNC<sub>2</sub> shall initiate the Information Reporting procedure when any change in the parameters occurs.
- If the *Information Type Item* IE is set to "DGPS Corrections", the RNC<sub>2</sub> shall initiate the Information Reporting procedure for this specific Information Type when either the PRC has drifted from the previously reported value more than the threshold indicated in the *PRC Deviation* IE or a change has occurred in the IODE.
- If the *Information Type Item* IE is set to "GPS Information" and the *GPS Information Item* IE includes "GPS Navigation Model & Recovery Assistance", the RNC<sub>2</sub> shall initiate the Information Reporting procedure for this specific GPS Information Item when a change has occurred regarding either the IODC or the list of visible satellites, identified by the *SatID* IEs.
- If the *Information Type Item* IE is set to "GPS Information" and the *GPS Information Item* IE includes "GPS Ionospheric Model", the RNC<sub>2</sub> shall initiate the Information Reporting procedure for this specific GPS Information Item when any change has occurred.

- If the *Information Type Item* IE is set to "GPS Information" and the *GPS Information Item* IE includes "GPS UTC Model", the RNC<sub>2</sub> shall initiate the Information Reporting procedure for this specific GPS Information Item when a change has occurred in the *t\_ot* parameter.
- If the *Information Type Item* IE is set to "GPS Information" and the *GPS Information Item* IE includes "GPS Almanac", the RNC<sub>2</sub> shall initiate the Information Reporting procedure for this specific GPS Information Item when any change has occurred.
- If the *Information Type Item* IE is set to "GPS Information" and the *GPS Information Item* IE includes "GPS Real-Time Integrity", the RNC<sub>2</sub> shall initiate the Information Reporting procedure for this specific GPS Information Item when any change has occurred.

**Response message:**

If the RNC<sub>2</sub> was able to determine the information requested by the RNC<sub>1</sub>, it shall respond with the INFORMATION EXCHANGE INITIATION RESPONSE message. The message shall include the *Information Exchange ID* IE set to the same value that was included in the INFORMATION EXCHANGE REQUEST message. When the *Report Characteristics* IE is set to "On Demand" or "On Modification" or "Periodic", the INFORMATION EXCHANGE INITIATION RESPONSE message shall contain the *Requested Data Value* IE.

## CHANGE REQUEST

⌘ **25.423 CR 786** ⌘ rev **-** ⌘ Current version: **5.4.0** ⌘

For **HELP** on using this form, see bottom of this page or look at the pop-up text over the ⌘ symbols.

**Proposed change affects:** UICC apps  ME  Radio Access Network  Core Network

|                        |   |                 |   |
|------------------------|---|-----------------|---|
| <b>Title:</b>          | ⌘ Correction for the Information Exchange Initiation procedure  |                 |   |
| <b>Source:</b>         | ⌘ RAN WG3   |                 |   |
| <b>Work item code:</b> | ⌘ TEI4  | <b>Date:</b>    | ⌘ 11/02/2003  |
| <b>Category:</b>       | ⌘ <b>A</b>  | <b>Release:</b> | ⌘ REL-5   |
|                        | Use <u>one</u> of the following categories:<br><b>F</b> (correction)<br><b>A</b> (corresponds to a correction in an earlier release)<br><b>B</b> (addition of feature),<br><b>C</b> (functional modification of feature)<br><b>D</b> (editorial modification)<br>Detailed explanations of the above categories can be found in 3GPP <a href="#">TR 21.900</a> . |                 | Use <u>one</u> of the following releases:<br>2 (GSM Phase 2)<br>R96 (Release 1996)<br>R97 (Release 1997)<br>R98 (Release 1998)<br>R99 (Release 1999)<br>Rel-4 (Release 4)<br>Rel-5 (Release 5)<br>Rel-6 (Release 6) |

|                                      |  |
|--------------------------------------|--|
| <b>Reason for change:</b>            | ⌘ Misalignment between the Response message and Information Report Characteristics section. In the Response message chapter is clearly stated that INFORMATION EXCHANGE INITIATION RESPONSE message shall contain the requested data value when Report Characteristic is "Periodic", but this statement is missing from the corresponding point in Report Characteristics section. |
| <b>Summary of change:</b>            | ⌘ Misalignment between the Response message and Information Report Characteristics section corrected   |
|                                      | <u>Impact assessment towards the previous version of the specification (same release):</u><br><br>This CR has isolated impact towards the previous version of the specification (same release).<br><br>The impact can be considered isolated because it only affects the Information Exchange Initiation procedure.  |
| <b>Consequences if not approved:</b> | ⌘ RNC is not aware when the first set of requested data value arrives  |

|                          |  |                          |   |   |  |                          |                          |
|--------------------------|--|--------------------------|---|---|--|--------------------------|--------------------------|
| <b>Clauses affected:</b> | ⌘ 8.5.6.2  |                          |   |   |  |                          |                          |
| <b>Other specs</b>       | <table border="1" style="display: inline-table; border-collapse: collapse;"> <tr> <td style="width: 20px; text-align: center;">Y</td> <td style="width: 20px; text-align: center;">N</td> </tr> <tr> <td style="text-align: center;">X</td> <td></td> </tr> </table> Other core specifications | Y                        | N | X |  | ⌘ TS 25.433 v4.7.0 CR807 | ⌘ TS 25.433 v5.3.0 CR808 |
| Y                        | N  |                          |   |   |  |                          |                          |
| X                        |  |                          |   |   |  |                          |                          |
|                          |  | ⌘ TS 25.423 v4.7.0 CR785 |   |   |  |                          |                          |

|                        |                                     |                                     |   |
|------------------------|-------------------------------------|-------------------------------------|---|
| <b>affected:</b>       | <input type="checkbox"/>            | <input type="checkbox"/>            | TS 25.453 v5.4.0 CR027<br>Test specifications<br>O&M Specifications |
|                        | <input checked="" type="checkbox"/> | <input checked="" type="checkbox"/> |   |
|                        | <input checked="" type="checkbox"/> | <input checked="" type="checkbox"/> |   |
| <b>Other comments:</b> | ⌘                                   |                                     |   |

**How to create CRs using this form:**

Comprehensive information and tips about how to create CRs can be found at <http://www.3gpp.org/specs/CR.htm>. Below is a brief summary:

- 1) Fill out the above form. The symbols above marked ⌘ contain pop-up help information about the field that they are closest to.
- 2) Obtain the latest version for the release of the specification to which the change is proposed. Use the MS Word "revision marks" feature (also known as "track changes") when making the changes. All 3GPP specifications can be downloaded from the 3GPP server under <ftp://ftp.3gpp.org/specs/> For the latest version, look for the directory name with the latest date e.g. 2001-03 contains the specifications resulting from the March 2001 TSG meetings.
- 3) With "track changes" disabled, paste the entire CR form (use CTRL-A to select it) into the specification just in front of the clause containing the first piece of changed text. Delete those parts of the specification which are not relevant to the change request.

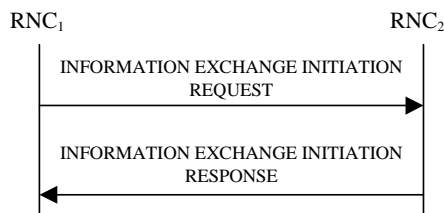
## 8.5.6 Information Exchange Initiation

### 8.5.6.1 General

This procedure is used by a RNC to request the initiation of an information exchange with another RNC.

This procedure uses the signalling bearer connection for the relevant Distant RNC Context.

### 8.5.6.2 Successful Operation



**Figure 30F: Information Exchange Initiation procedure, Successful Operation**

The procedure is initiated with an INFORMATION EXCHANGE INITIATION REQUEST message sent from RNC<sub>1</sub> to RNC<sub>2</sub>.

Upon receipt, the RNC<sub>2</sub> shall provide the requested information according to the parameters given in the request. Unless specified below, the meaning of the parameters are given in other specifications.

#### Information Report Characteristics:

The *Information Report Characteristics* IE indicates how the reporting of the information shall be performed.

If the *Information Report Characteristics* IE is set to "On Demand", the RNC<sub>2</sub> shall report the requested information immediately.

If the *Information Report Characteristics* IE is set to "Periodic", the RNC<sub>2</sub> shall [report the requested information immediately and then shall](#) periodically initiate the Information Reporting procedure for all the requested information, with the report frequency indicated by the *Information Report Periodicity* IE.

If the *Information Report Characteristics* IE is set to "On Modification", the RNC<sub>2</sub> shall report the requested information immediately and then shall initiate the Information Reporting procedure in accordance to the following conditions:

- If the *Information Type Item* IE is set to "IPDL Parameters", the RNC<sub>2</sub> shall initiate the Information Reporting procedure when any change in the parameters occurs.
- If the *Information Type Item* IE is set to "DGPS Corrections", the RNC<sub>2</sub> shall initiate the Information Reporting procedure for this specific Information Type when either the PRC has drifted from the previously reported value more than the threshold indicated in the *PRC Deviation* IE or a change has occurred in the IODE.
- If the *Information Type Item* IE is set to "GPS Information" and the *GPS Information Item* IE includes "GPS Navigation Model & Recovery Assistance", the RNC<sub>2</sub> shall initiate the Information Reporting procedure for this specific GPS Information Item when a change has occurred regarding either the IODC or the list of visible satellites, identified by the *SatID* IEs.
- If the *Information Type Item* IE is set to "GPS Information" and the *GPS Information Item* IE includes "GPS Ionospheric Model", the RNC<sub>2</sub> shall initiate the Information Reporting procedure for this specific GPS Information Item when any change has occurred.



- If the *Information Type Item* IE is set to "GPS Information" and the *GPS Information Item* IE includes "GPS UTC Model", the RNC<sub>2</sub> shall initiate the Information Reporting procedure for this specific GPS Information Item when a change has occurred in the *t\_ot* parameter.
- If the *Information Type Item* IE is set to "GPS Information" and the *GPS Information Item* IE includes "GPS Almanac", the RNC<sub>2</sub> shall initiate the Information Reporting procedure for this specific GPS Information Item when any change has occurred.
- If the *Information Type Item* IE is set to "GPS Information" and the *GPS Information Item* IE includes "GPS Real-Time Integrity", the RNC<sub>2</sub> shall initiate the Information Reporting procedure for this specific GPS Information Item when any change has occurred.
- If the *Information Type* IE is set to "Cell Capacity Class", the RNC<sub>2</sub> shall initiate the Information Reporting procedure for uplink and downlink cell capacity class when any change has occurred. If either uplink or downlink cell capacity class satisfies the requested report characteristics, the RNC<sub>2</sub> shall report the result of both uplink and downlink cell capacity information.

**Response message:**

If the RNC<sub>2</sub> was able to determine the information requested by the RNC<sub>1</sub>, it shall respond with the INFORMATION EXCHANGE INITIATION RESPONSE message. The message shall include the *Information Exchange ID* IE set to the same value that was included in the INFORMATION EXCHANGE REQUEST message. When the *Report Characteristics* IE is set to "On Demand" or "On Modification" or "Periodic", the INFORMATION EXCHANGE INITIATION RESPONSE message shall contain the *Requested Data Value* IE.

## CHANGE REQUEST

⌘ **25.433 CR 807** ⌘ rev **-** ⌘ Current version: **4.7.0** ⌘

For **HELP** on using this form, see bottom of this page or look at the pop-up text over the ⌘ symbols.

**Proposed change affects:** UICC apps  ME  Radio Access Network  Core Network

|                        |   |                 |   |
|------------------------|---|-----------------|---|
| <b>Title:</b>          | ⌘ Correction for the Information Exchange Initiation procedure  |                 |   |
| <b>Source:</b>         | ⌘ RAN WG3   |                 |   |
| <b>Work item code:</b> | ⌘ TEI4  | <b>Date:</b>    | ⌘ 11/02/2003  |
| <b>Category:</b>       | ⌘ <b>F</b>  | <b>Release:</b> | ⌘ REL-4   |
|                        | Use <u>one</u> of the following categories:<br><b>F</b> (correction)<br><b>A</b> (corresponds to a correction in an earlier release)<br><b>B</b> (addition of feature),<br><b>C</b> (functional modification of feature)<br><b>D</b> (editorial modification)<br>Detailed explanations of the above categories can be found in 3GPP <a href="#">TR 21.900</a> . |                 | Use <u>one</u> of the following releases:<br>2 (GSM Phase 2)<br>R96 (Release 1996)<br>R97 (Release 1997)<br>R98 (Release 1998)<br>R99 (Release 1999)<br>Rel-4 (Release 4)<br>Rel-5 (Release 5)<br>Rel-6 (Release 6) |

|                                      |  |
|--------------------------------------|--|
| <b>Reason for change:</b>            | ⌘ Misalignment between the Response message and Information Report Characteristics section. In the Response message chapter is clearly stated that INFORMATION EXCHANGE INITIATION RESPONSE message shall contain the requested data value when Report Characteristic is "Periodic", but this statement is missing from the corresponding point in Report Characteristics section. |
| <b>Summary of change:</b>            | ⌘ Misalignment between the Response message and Information Report Characteristics section corrected   |
|                                      | <u>Impact assessment towards the previous version of the specification (same release):</u><br><br>This CR has isolated impact towards the previous version of the specification (same release).<br><br>The impact can be considered isolated because it only affects the Information Exchange Initiation procedure.  |
| <b>Consequences if not approved:</b> | ⌘ RNC is not aware when the first set of requested data value arrives  |

|                          |  |   |   |   |  |                          |                          |
|--------------------------|--|---|---|---|--|--------------------------|--------------------------|
| <b>Clauses affected:</b> | ⌘ 8.2.26.2   |   |   |   |  |                          |                          |
| <b>Other specs</b>       | <table border="1" style="display: inline-table; border-collapse: collapse;"> <tr> <td style="width: 20px; text-align: center;">Y</td> <td style="width: 20px; text-align: center;">N</td> </tr> <tr> <td style="text-align: center;">X</td> <td></td> </tr> </table> Other core specifications | Y | N | X |  | ⌘ TS 25.423 v4.7.0 CR785 | ⌘ TS 25.433 v5.3.0 CR808 |
| Y                        | N  |   |   |   |  |                          |                          |
| X                        |  |   |   |   |  |                          |                          |

|                        |                                     |                                     |                     |
|------------------------|-------------------------------------|-------------------------------------|---------------------|
| <b>affected:</b>       | <input type="checkbox"/>            | <input type="checkbox"/>            |                     |
|                        | <input checked="" type="checkbox"/> | <input checked="" type="checkbox"/> | Test specifications |
|                        | <input checked="" type="checkbox"/> | <input checked="" type="checkbox"/> | O&M Specifications  |
| <b>Other comments:</b> | ⌘                                   |                                     |                     |

TS 25.423 v5.4.0 CR786  
 TS 25.453 v5.4.0 CR027

**How to create CRs using this form:**

Comprehensive information and tips about how to create CRs can be found at <http://www.3gpp.org/specs/CR.htm>. Below is a brief summary:

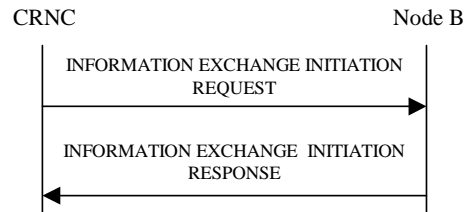
- 1) Fill out the above form. The symbols above marked ⌘ contain pop-up help information about the field that they are closest to.
- 2) Obtain the latest version for the release of the specification to which the change is proposed. Use the MS Word "revision marks" feature (also known as "track changes") when making the changes. All 3GPP specifications can be downloaded from the 3GPP server under <ftp://ftp.3gpp.org/specs/> For the latest version, look for the directory name with the latest date e.g. 2001-03 contains the specifications resulting from the March 2001 TSG meetings.
- 3) With "track changes" disabled, paste the entire CR form (use CTRL-A to select it) into the specification just in front of the clause containing the first piece of changed text. Delete those parts of the specification which are not relevant to the change request.

## 8.2.26 Information Exchange Initiation

### 8.2.26.1 General

This procedure is used by a CRNC to request the initiation of information provisioning from a Node B.

### 8.2.26.2 Successful Operation



**Figure 27L: Information Exchange Initiation procedure, Successful Operation**

The procedure is initiated with the INFORMATION EXCHANGE INITIATION REQUEST message sent from the CRNC to the Node B using the Node B Control Port.

Upon reception, the Node B shall provide the requested information according to the *Information Type Item* IE. Unless specified below, the meaning of the parameters are given in other specifications.

#### Information Report Characteristics

The *Information Report Characteristics* IE indicates how the reporting of the information shall be performed.

If the *Information Report Characteristics* IE is set to "On Demand", the Node B shall report the requested information immediately.

If the *Information Report Characteristics* IE is set to "Periodic", the Node B shall [immediately report the requested information and then shall](#) periodically initiate the Information Reporting procedure for all the requested information, with the requested reporting frequency.

If the *Information Report Characteristics* IE is set to "On Modification", the Node B shall immediately report the requested information and then shall initiate the Information Reporting procedure in accordance to the following conditions related to the *Information Type* IE:

- 1) If the *Information Type Item* IE is set to "DGPS Corrections", the Node B shall initiate the Information Reporting procedure when either the PRC has drifted from the previously reported value more than the threshold indicated in the *PRC Deviation* IE or a change has occurred in the IODE.
- 2) If the *Information Type Item* IE is set to "GPS Information" and the *GPS Information Item* IE includes "GPS Navigation Model & Time Recovery", the Node B shall initiate the Information Reporting procedure for this specific GPS Information Item when a change has occurred regarding either the IODC or the list of visible satellites, identified by the *SatID* IEs.
- 3) If the *Information Type Item* IE is set to "GPS Information" and the *GPS Information Item* IE includes "GPS Ionospheric Model", the Node B shall initiate the Information Reporting procedure for this specific GPS Information Item when any change has occurred.
- 4) If the *Information Type Item* IE is set to "GPS Information" and the *GPS Information Item* IE includes "GPS UTC Model", the Node B shall initiate the Information Reporting procedure for this specific GPS Information Item when a change has occurred in the *t\_ot* parameter.
- 5) If the *Information Type Item* IE is set to "GPS Information" and the *GPS Information Item* IE includes "GPS Almanac", the Node B shall initiate the Information Reporting procedure for this specific GPS Information Item when any change has occurred.

- 6) If the *Information Type Item* IE is set to "GPS Information" and the *GPS Information Item* IE includes "GPS Real-Time Integrity", the Node B shall initiate the Information Reporting procedure for this specific GPS Information Item when any change has occurred.

**Response message**

If the Node B was able to initiate the information provision requested by the CRNC, it shall respond with the INFORMATION EXCHANGE INITIATION RESPONSE message sent over the Node B Control Port. The message shall include the same Information Exchange ID that was included in the INFORMATION EXCHANGE REQUEST message. When the *Report Characteristics* IE is set to "On Demand" or "On Modification" or "Periodic", the INFORMATION EXCHANGE INITIATION RESPONSE message shall contain the requested data.

## CHANGE REQUEST

⌘ **25.433 CR 808** ⌘ rev **-** ⌘ Current version: **5.3.0** ⌘

For **HELP** on using this form, see bottom of this page or look at the pop-up text over the ⌘ symbols.

**Proposed change affects:** UICC apps  ME  Radio Access Network  Core Network

|                        |  |                 |   |
|------------------------|--|-----------------|---|
| <b>Title:</b>          | ⌘ Correction for the Information Exchange Initiation procedure                                 |                 |   |
| <b>Source:</b>         | ⌘ RAN WG3  |                 |   |
| <b>Work item code:</b> | ⌘ TEI4   | <b>Date:</b>    | ⌘ 11/02/2003                              |
| <b>Category:</b>       | ⌘ <b>A</b>   | <b>Release:</b> | ⌘ REL-5                                   |
|                        | Use <u>one</u> of the following categories:  |                 | Use <u>one</u> of the following releases: |
|                        | <b>F</b> (correction)  |                 | 2 (GSM Phase 2)                           |
|                        | <b>A</b> (corresponds to a correction in an earlier release)                                   |                 | R96 (Release 1996)                        |
|                        | <b>B</b> (addition of feature),  |                 | R97 (Release 1997)                        |
|                        | <b>C</b> (functional modification of feature)  |                 | R98 (Release 1998)                        |
|                        | <b>D</b> (editorial modification)  |                 | R99 (Release 1999)                        |
|                        | Detailed explanations of the above categories can be found in 3GPP <a href="#">TR 21.900</a> . |                 | Rel-4 (Release 4)                         |
|                        |  |                 | Rel-5 (Release 5)                         |
|                        |  |                 | Rel-6 (Release 6)                         |

|                                      |  |
|--------------------------------------|--|
| <b>Reason for change:</b>            | ⌘ Misalignment between the Response message and Information Report Characteristics section. In the Response message chapter is clearly stated that INFORMATION EXCHANGE INITIATION RESPONSE message shall contain the requested data value when Report Characteristic is "Periodic", but this statement is missing from the corresponding point in Report Characteristics section. |
| <b>Summary of change:</b>            | ⌘ Misalignment between the Response message and Information Report Characteristics section corrected   |
|                                      | <u>Impact assessment towards the previous version of the specification (same release):</u>   |
|                                      | This CR has isolated impact towards the previous version of the specification (same release).  |
|                                      | The impact can be considered isolated because it only affects the Information Exchange Initiation procedure.   |
| <b>Consequences if not approved:</b> | ⌘ RNC is not aware when the first set of requested data value arrives  |

|                          |            |                           |  |
|--------------------------|------------|---------------------------|--|
| <b>Clauses affected:</b> | ⌘ 8.2.26.2 |                           |  |
| <b>Other specs</b>       | ⌘          | Other core specifications | ⌘ TS 25.433 v4.7.0 CR807<br>TS 25.423 v4.7.0 CR785<br>TS 25.423 v5.4.0 CR786 |

|                        |                                     |                                     |   |
|------------------------|-------------------------------------|-------------------------------------|---|
| <b>affected:</b>       | <input type="checkbox"/>            | <input type="checkbox"/>            | TS 25.453 v5.4.0 CR027<br>Test specifications<br>O&M Specifications |
|                        | <input checked="" type="checkbox"/> | <input checked="" type="checkbox"/> |   |
|                        | <input checked="" type="checkbox"/> | <input checked="" type="checkbox"/> |   |
| <b>Other comments:</b> | ⌘                                   |                                     |   |

**How to create CRs using this form:**

Comprehensive information and tips about how to create CRs can be found at <http://www.3gpp.org/specs/CR.htm>. Below is a brief summary:

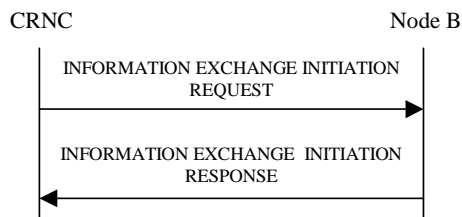
- 1) Fill out the above form. The symbols above marked ⌘ contain pop-up help information about the field that they are closest to.
- 2) Obtain the latest version for the release of the specification to which the change is proposed. Use the MS Word "revision marks" feature (also known as "track changes") when making the changes. All 3GPP specifications can be downloaded from the 3GPP server under <ftp://ftp.3gpp.org/specs/> For the latest version, look for the directory name with the latest date e.g. 2001-03 contains the specifications resulting from the March 2001 TSG meetings.
- 3) With "track changes" disabled, paste the entire CR form (use CTRL-A to select it) into the specification just in front of the clause containing the first piece of changed text. Delete those parts of the specification which are not relevant to the change request.

## 8.2.26 Information Exchange Initiation

### 8.2.26.1 General

This procedure is used by a CRNC to request the initiation of information provisioning from a Node B.

### 8.2.26.2 Successful Operation



**Figure 27L: Information Exchange Initiation procedure, Successful Operation**

The procedure is initiated with the INFORMATION EXCHANGE INITIATION REQUEST message sent from the CRNC to the Node B using the Node B Control Port.

Upon reception, the Node B shall provide the requested information according to the *Information Type Item* IE. Unless specified below, the meaning of the parameters are given in other specifications.

#### Information Report Characteristics

The *Information Report Characteristics* IE indicates how the reporting of the information shall be performed.

If the *Information Report Characteristics* IE is set to "On Demand", the Node B shall report the requested information immediately.

If the *Information Report Characteristics* IE is set to "Periodic", the Node B shall [immediately report the requested information and then shall](#) periodically initiate the Information Reporting procedure for all the requested information, with the requested reporting frequency.

If the *Information Report Characteristics* IE is set to "On Modification", the Node B shall immediately report the requested information and then shall initiate the Information Reporting procedure in accordance to the following conditions related to the *Information Type* IE:

- 1) If the *Information Type Item* IE is set to "DGPS Corrections", the Node B shall initiate the Information Reporting procedure when either the PRC has drifted from the previously reported value more than the threshold indicated in the *PRC Deviation* IE or a change has occurred in the IODE.
- 2) If the *Information Type Item* IE is set to "GPS Information" and the *GPS Information Item* IE includes "GPS Navigation Model & Time Recovery", the Node B shall initiate the Information Reporting procedure for this specific GPS Information Item when a change has occurred regarding either the IODC or the list of visible satellites, identified by the *SatID* IEs.
- 3) If the *Information Type Item* IE is set to "GPS Information" and the *GPS Information Item* IE includes "GPS Ionospheric Model", the Node B shall initiate the Information Reporting procedure for this specific GPS Information Item when any change has occurred.
- 4) If the *Information Type Item* IE is set to "GPS Information" and the *GPS Information Item* IE includes "GPS UTC Model", the Node B shall initiate the Information Reporting procedure for this specific GPS Information Item when a change has occurred in the *t\_ot* parameter.
- 5) If the *Information Type Item* IE is set to "GPS Information" and the *GPS Information Item* IE includes "GPS Almanac", the Node B shall initiate the Information Reporting procedure for this specific GPS Information Item when any change has occurred.



- 6) If the *Information Type Item* IE is set to "GPS Information" and the *GPS Information Item* IE includes "GPS Real-Time Integrity", the Node B shall initiate the Information Reporting procedure for this specific GPS Information Item when any change has occurred.

**Response message**

If the Node B was able to initiate the information provision requested by the CRNC, it shall respond with the INFORMATION EXCHANGE INITIATION RESPONSE message sent over the Node B Control Port. The message shall include the same Information Exchange ID that was included in the INFORMATION EXCHANGE REQUEST message. When the *Report Characteristics* IE is set to "On Demand" or "On Modification" or "Periodic", the INFORMATION EXCHANGE INITIATION RESPONSE message shall contain the requested data.

## CHANGE REQUEST

⌘ **25.453 CR 027** ⌘ rev **-** ⌘ Current version: **5.4.0** ⌘

For **HELP** on using this form, see bottom of this page or look at the pop-up text over the ⌘ symbols.

**Proposed change affects:** UICC apps  ME  Radio Access Network  Core Network

|                        |   |                 |   |
|------------------------|---|-----------------|---|
| <b>Title:</b>          | ⌘ Correction for the Information Exchange Initiation procedure  |                 |   |
| <b>Source:</b>         | ⌘ RAN WG3   |                 |   |
| <b>Work item code:</b> | ⌘ TEI4  | <b>Date:</b>    | ⌘ 18/02/2003  |
| <b>Category:</b>       | ⌘ <b>F</b>  | <b>Release:</b> | ⌘ REL-5   |
|                        | Use <u>one</u> of the following categories:<br><b>F</b> (correction)<br><b>A</b> (corresponds to a correction in an earlier release)<br><b>B</b> (addition of feature),<br><b>C</b> (functional modification of feature)<br><b>D</b> (editorial modification)<br>Detailed explanations of the above categories can be found in 3GPP <a href="#">TR 21.900</a> . |                 | Use <u>one</u> of the following releases:<br>2 (GSM Phase 2)<br>R96 (Release 1996)<br>R97 (Release 1997)<br>R98 (Release 1998)<br>R99 (Release 1999)<br>Rel-4 (Release 4)<br>Rel-5 (Release 5)<br>Rel-6 (Release 6) |

|                                      |   |
|--------------------------------------|---|
| <b>Reason for change:</b>            | ⌘ Misalignment between the Response message and Information Report Characteristics section in NBAP and RNSAP. In the Response message chapter it is clearly stated that INFORMATION EXCHANGE INITIATION RESPONSE message shall contain the requested data value when Report Characteristic is "Periodic", but this statement is missing from the corresponding point in Report Characteristics section.<br><br>This CR is to align Information Exchange Initiation chapter in PCAP to corresponding correction in RNSAP and NBAP. |
| <b>Summary of change:</b>            | ⌘ Exchange Initiation chapter aligned with corresponding chapter in NBAP and RNSAP.<br><u>Impact assessment towards the previous version of the specification (same release):</u><br><br>This CR has isolated impact towards the previous version of the specification (same release).<br><br>The impact can be considered isolated because it only affects the Information Exchange Initiation procedure.  |
| <b>Consequences if not approved:</b> | ⌘ RNC is not aware when the first set of requested data value arrives   |

|                          |   |   |   |   |  |                          |                          |
|--------------------------|---|---|---|---|--|--------------------------|--------------------------|
| <b>Clauses affected:</b> | ⌘ 8.3.2   |   |   |   |  |                          |                          |
| <b>Other specs</b>       | <table border="1" style="display: inline-table; vertical-align: middle;"> <tr> <td style="text-align: center;">Y</td> <td style="text-align: center;">N</td> </tr> <tr> <td style="text-align: center;">X</td> <td style="text-align: center;"></td> </tr> </table> Other core specifications | Y | N | X |  | ⌘ TS 25.433 v4.7.0 CR807 | ⌘ TS 25.433 v5.3.0 CR808 |
| Y                        | N   |   |   |   |  |                          |                          |
| X                        |   |   |   |   |  |                          |                          |

|                        |                                     |   |                     |
|------------------------|-------------------------------------|---|---------------------|
| <b>affected:</b>       | <input type="checkbox"/>            |   |                     |
|                        | <input checked="" type="checkbox"/> | X | Test specifications |
|                        | <input checked="" type="checkbox"/> | X | O&M Specifications  |
| <b>Other comments:</b> | ⌘                                   |   |                     |

TS 25.423 v4.7.0 CR785  
 TS 25.423 v5.4.0 CR786

**How to create CRs using this form:**

Comprehensive information and tips about how to create CRs can be found at <http://www.3gpp.org/specs/CR.htm>.

Below is a brief summary:

- 1) Fill out the above form. The symbols above marked ⌘ contain pop-up help information about the field that they are closest to.
- 2) Obtain the latest version for the release of the specification to which the change is proposed. Use the MS Word "revision marks" feature (also known as "track changes") when making the changes. All 3GPP specifications can be downloaded from the 3GPP server under <ftp://ftp.3gpp.org/specs/> For the latest version, look for the directory name with the latest date e.g. 2001-03 contains the specifications resulting from the March 2001 TSG meetings.
- 3) With "track changes" disabled, paste the entire CR form (use CTRL-A to select it) into the specification just in front of the clause containing the first piece of changed text. Delete those parts of the specification which are not relevant to the change request.

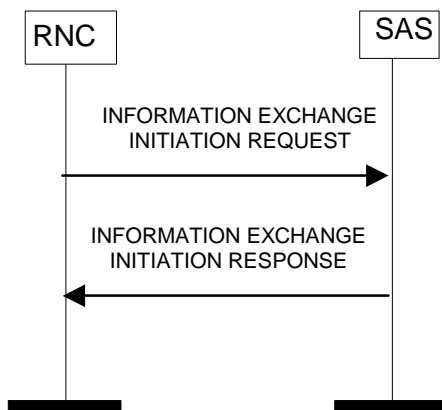
## 8.3 Information Exchange Initiation

### 8.3.1 General

This procedure is used by a RNC to request the initiation of an information exchange with a SAS.

This procedure uses the signalling bearer connection for the Information Exchange Context.

### 8.3.2 Successful Operation



**Figure 3: Information Exchange Initiation procedure, Successful Operation**

The procedure is initiated with an INFORMATION EXCHANGE INITIATION REQUEST message sent from RNC to SAS.

If the *Information Type IE* is set to 'Implicit', the SAS is responsible for selecting the type of assistance data.

Upon reception, the SAS shall provide the requested information according to the parameters given in the request. Unless specified below, the meaning of the parameters are given in other specifications.

#### Information Report Characteristics:

The *Information Report Characteristics IE* indicates how the reporting of the information shall be performed.

If the *Information Report Characteristics IE* is set to 'On-Demand', the SAS shall report the requested information immediately.

If the *Information Report Characteristics IE* is set to "Periodic", the SAS shall [report the requested information immediately and then shall](#) periodically initiate the Information Reporting procedure for all the requested information, with the requested report frequency.

If the *Information Report Characteristics IE* is set to "On-Modification", the SAS shall report the requested information immediately and then shall initiate the Information Reporting procedure in accordance to the following conditions:

- If the *Information Type IE* is set to "Explicit" and the *Explicit Information Item IE* includes "Almanac and Satellite Health", the SAS shall initiate the Information Reporting procedure for this specific Explicit Information Type when a change has occurred in almanac/health information for at least one visible satellite.
- If the *Information Type IE* is set to "Explicit" and the *Explicit Information Item IE* includes "UTC Model", the SAS shall initiate the Information Reporting procedure for this specific Explicit Information Type when a change has occurred in the GPS UTC model.
- If the *Transmission TOW Indicator IE* is set to "requested", then the SAS shall include the *GPS Transmission TOW IE* in the INFORMATION REPORT message.

- If the *Information Type* IE is set to 'Explicit' and the *Explicit Information Item* IE includes "Ionospheric Model", the SAS shall initiate the Information Reporting procedure for this specific Explicit Information Type when a change has occurred in the GPS ionospheric model.
- If the *Transmission TOW Indicator* IE is set to "requested", then the SAS shall include the *GPS Transmission TOW* IE in the INFORMATION REPORT message.
- If the *Information Type* IE is set to "Explicit" and the *Explicit Information Item* IE includes "Navigation Model", the SAS shall initiate the Information Reporting procedure for this specific Explicit Information Type when a change has occurred in the clock/ephemeris information for at least one visible satellite or in the list of visible satellites.
- If the *Transmission TOW Indicator* IE is set to "requested", then the SAS shall include the *GPS Transmission TOW* IE in the INFORMATION REPORT message.
- If the *Information Type* IE is set to "Explicit" and the *Explicit Information Item* IE includes "DGPS Corrections", the SAS shall initiate the Information Reporting procedure for this specific Explicit Information Type when a change has occurred in the quality of the DGPS corrections information for at least one visible satellite or in the list of visible satellites.
- If the *Information Type* IE is set to "Explicit" and the *Explicit Information Item* IE includes "Reference Time", the SAS shall initiate the Information Reporting procedure for this specific Explicit Information Type when a change has occurred in the time-of-week assistance information for at least one visible satellite or in the list of visible satellites.
- If the *Information Type* IE is set to "Explicit" and the *Explicit Information Item* IE includes "Acquisition Assistance", the SAS shall initiate the Information Reporting procedure for this specific Explicit Information Type when a change has occurred in acquisition assistance information for at least one visible satellite or in the list of visible satellites.
- If the *Information Type* IE is set to "Explicit" and the *Explicit Information Item* IE includes "Real Time Integrity", the SAS shall initiate the Information Reporting procedure for this specific Explicit Information Type when a change has occurred in the real-time integrity status of at least one visible satellite.
- If the *Information Type* IE is set to "Explicit" and the *Explicit Information Item* IE includes "Almanac and Satellite Health SIB", the SAS shall initiate the Information Reporting procedure for this specific Explicit Information Type when a change has occurred in almanac/health information for at least one visible satellite.
- If the *Transmission TOW Indicator* IE is set to "requested", then the SAS shall include the *GPS Transmission TOW* IE in the INFORMATION REPORT message.

**Response message:**

If the SAS was able to determine the information requested by the RNC, it shall respond with the INFORMATION EXCHANGE INITIATION RESPONSE message. The message shall include the same Information Exchange ID that was included in the INFORMATION EXCHANGE REQUEST message.

When the response message includes data to be reported (see above), the SAS shall include at least one IE in the *Requested Data Value* IE.