

3GPP TSG-CN Meeting #23
10th - 12th March 2004, Phoenix, USA

NP-040094

Source: 3GPP TSG CN2
Title: CRs for Rel-6 WI EDCAMEL
Agenda item: 9.14
Document for: APPROVAL

This document contains following CRs for Rel-6 WI CAMEL4 that are approved by CN2 and are forwarded to TSG CN#23 for approval:

TDoc #	Title	Typ	Spec	CR	C	R	Rel	Versi	WI
N2-040015	EDS and DisconnectLeg interworking	CR	23.078	652	F		Rel-6	6.0.0	EDCAMEL
N2-040020	No receipt of Int_DP_Analysed_Information in state Monitoring	CR	23.078	657	D		Rel-6	6.0.0	EDCAMEL

CR-Form-v7			
CHANGE REQUEST			
⌘	23.078	CR	652
⌘	rev	-	⌘
			Current version: 6.0.0 ⌘

For **HELP** on using this form, see bottom of this page or look at the pop-up text over the ⌘ symbols.

Proposed change affects: UICC apps ME Radio Access Network Core Network

Title:	⌘ EDS and DisconnectLeg interworking		
Source:	⌘ Alcatel		
Work item code:	⌘ EDCAMEL	Date:	⌘ 28/01/2004
Category:	⌘ F	Release:	⌘ Rel-6
Use <u>one</u> of the following categories: F (correction) A (corresponds to a correction in an earlier release) B (addition of feature), C (functional modification of feature) D (editorial modification) Detailed explanations of the above categories can be found in 3GPP TR 21.900 .		Use <u>one</u> of the following releases: 2 (GSM Phase 2) R96 (Release 1996) R97 (Release 1997) R98 (Release 1998) R99 (Release 1999) Rel-4 (Release 4) Rel-5 (Release 5) Rel-6 (Release 6)	

Reason for change:	⌘ In the current specification the handling of EDS on receipt of DisconnectLeg (Leg1) after receiving of DisconnectLeg(Leg2) is the same one as on receipt the DisconnectLeg(Leg2) only. But as the 2 legs are disconnected, the call shall be terminated and could not be continued as its is described for the time being.
Summary of change:	⌘ The handling on receipt of DisconnectLeg (Leg1) after receiving of DisconnectLeg(Leg2) is the same one as the one relative to the receipt of ReleaseCall.
Consequences if not approved:	⌘ The handling of DisconnectLeg on leg1 does not work at the establishment of an EDS dialogue.

Clauses affected:	⌘ 4.5.2.1 and 4.5.5						
Other specs affected:	<table border="1" style="font-size: x-small;"> <tr> <td style="width: 20px;">Y</td> <td style="width: 20px;">N</td> </tr> <tr> <td style="text-align: center;">X</td> <td style="text-align: center;">X</td> </tr> </table>	Y	N	X	X	Other core specifications	⌘
	Y	N					
	X	X					
X	Test specifications						
X	O&M Specifications						
Other comments:	⌘						

How to create CRs using this form:

Comprehensive information and tips about how to create CRs can be found at <http://www.3gpp.org/specs/CR.htm>. Below is a brief summary:

- 1) Fill out the above form. The symbols above marked ⌘ contain pop-up help information about the field that they are closest to.

- 2) Obtain the latest version for the release of the specification to which the change is proposed. Use the MS Word "revision marks" feature (also known as "track changes") when making the changes. All 3GPP specifications can be downloaded from the 3GPP server under <ftp://ftp.3gpp.org/specs/> For the latest version, look for the directory name with the latest date e.g. 2001-03 contains the specifications resulting from the March 2001 TSG meetings.
- 3) With "track changes" disabled, paste the entire CR form (use CTRL-A to select it) into the specification just in front of the clause containing the first piece of changed text. Delete those parts of the specification which are not relevant to the change request.

***** First modified section *****

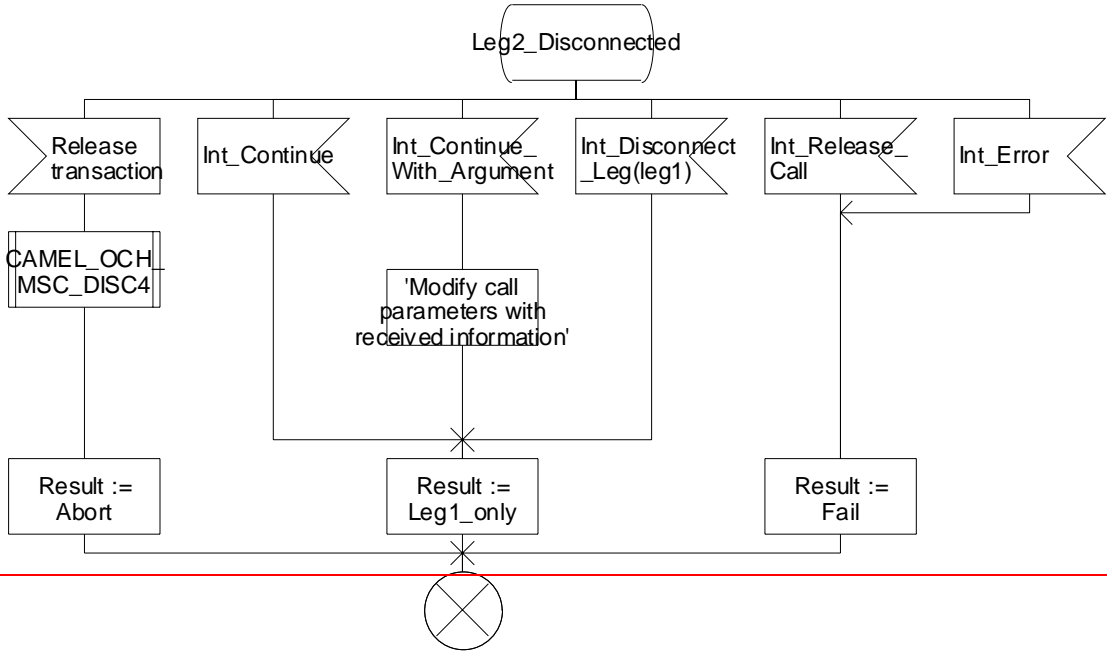
4.5.2.1 Handling of mobile originated calls in the originating MSC

Procedure CAMEL_SDS_MO_INIT

4(4)

/* Procedure in the MSC to perform CAMEL handling for a subscribed Dialed Service */

/* Signals to/from the left are to/from the BSS; signals to/from the right are to/from the gsmSSF. */



Procedure CAMEL_SDS_MO_INIT

4(4)

/* Procedure in the MSC to perform CAMEL handling for a subscribed Dialed Service */

/* Signals to/from the left are to/from the BSS; signals to/from the right are to/from the gsmSSF. */

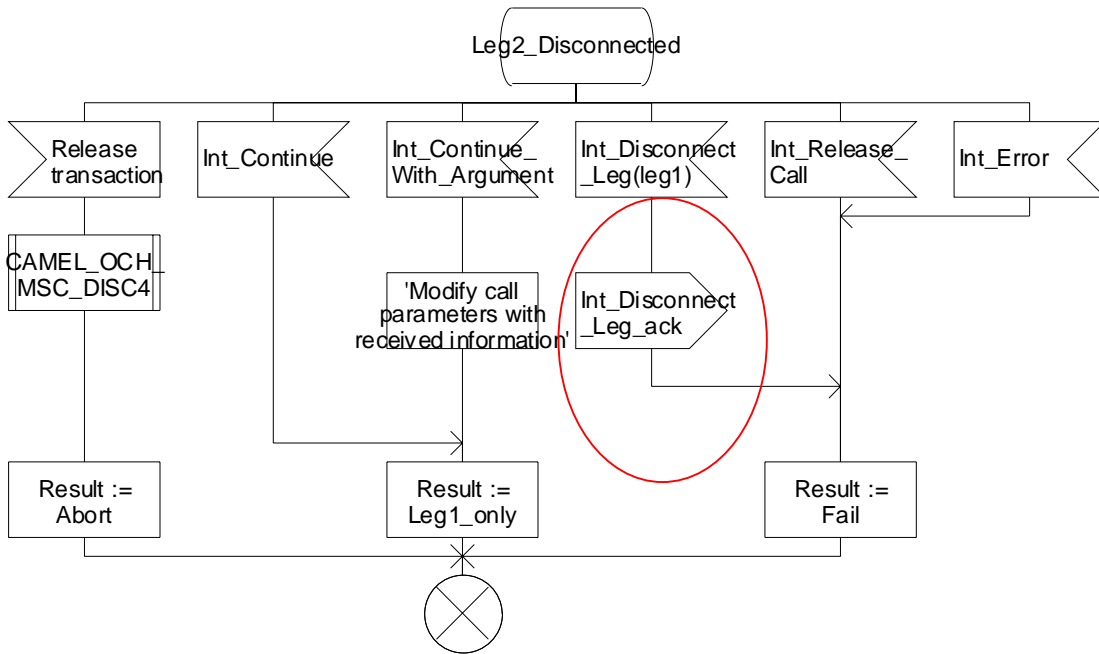


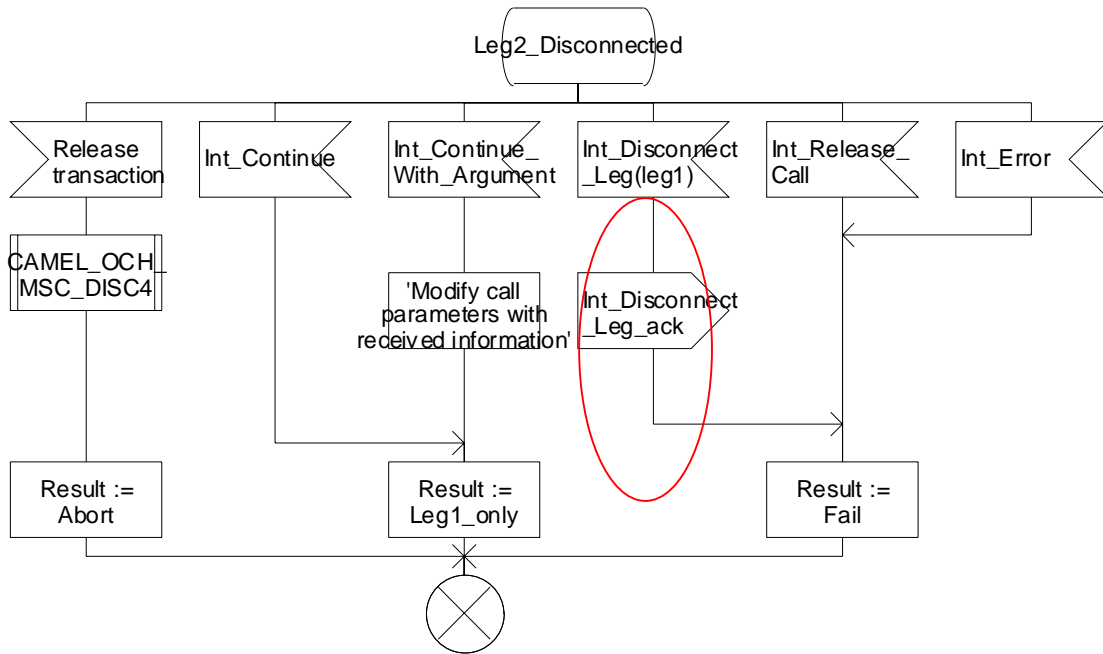
Figure 4.12-4: Procedure CAMEL SDS MO INIT (sheet 4)

Procedure CAMEL_NDS_MO_INIT

4(4)

/* Procedure in the MSC to perform CAMEL handling for a network Dialed Service for mobile originated calls*/

/* Signals to/from the left are to/from the BSS; signals to/from the right are to/from the gsmSSF. */



[Figure 4.13-4: Procedure CAMEL_NDS_MO_INIT \(sheet 4\)](#)

***** Last modified section *****

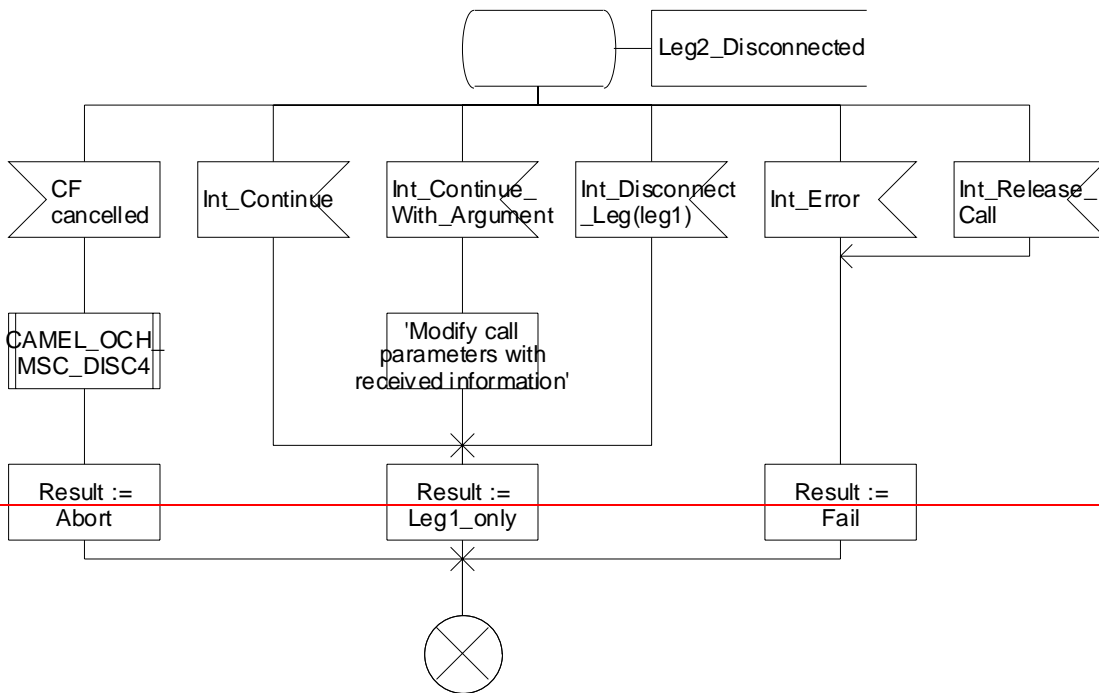
4.5.5 Handling of forwarded calls

Procedure CAMEL_SDS_CF_INIT

4(4)

/* Procedure in the MSC to perform CAMEL handling for a subscribed Dialed Service */

/* Signals to/from the left are to/from the parent process; signals to/from the right are to/from the gsmSSF. */



Procedure CAMEL_SDS_CF_INIT

4(4)

/* Procedure in the MSC to perform CAMEL handling for a subscribed Dialed Service */

/* Signals to/from the left are to/from the parent process; signals to/from the right are to/from the gsmSSF. */

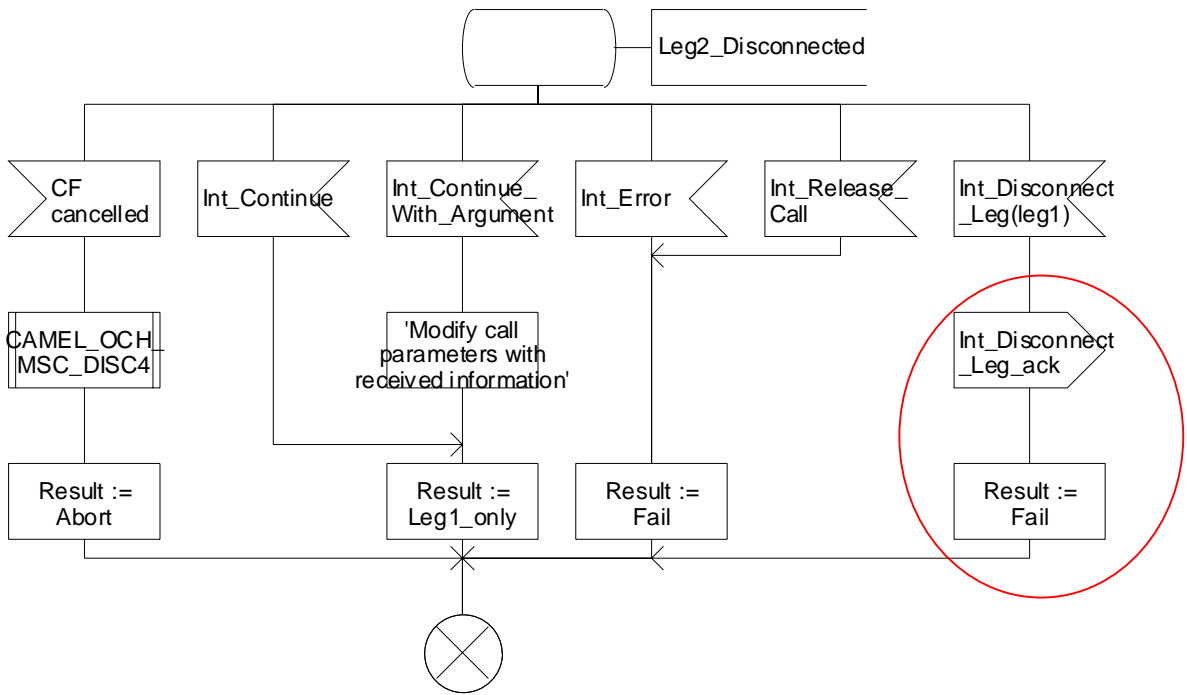


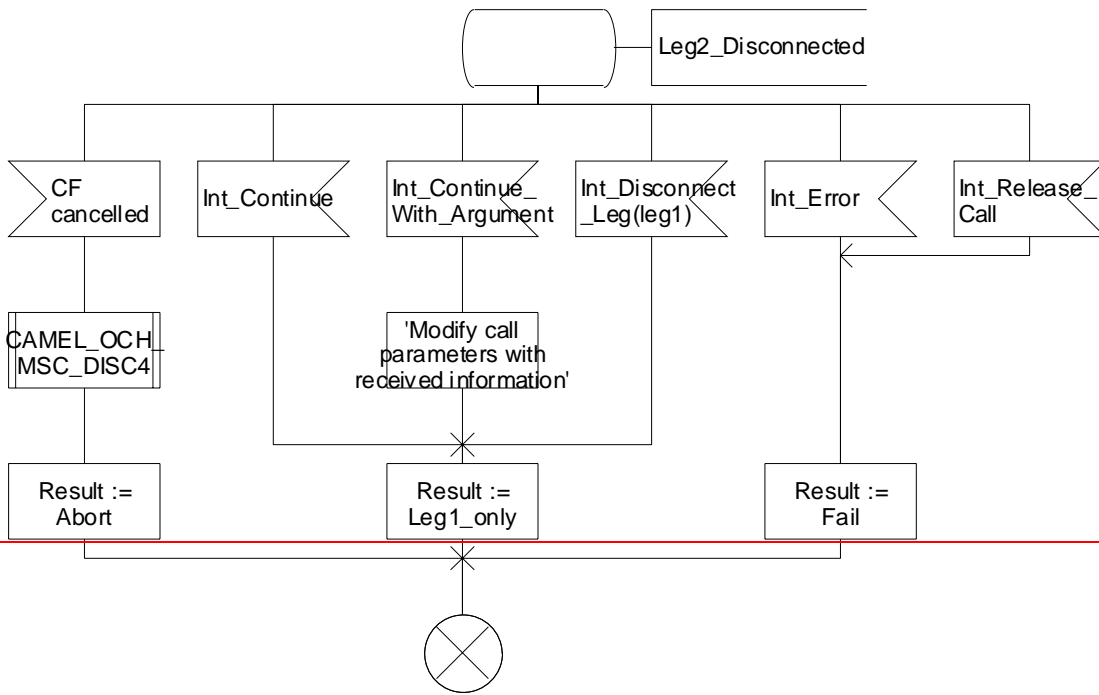
Figure 4.78-4: Procedure CAMEL SDS CF INIT (sheet 4)

Procedure CAMEL_NDS_CF_INIT

4(4)

/ Procedure in the MSC to perform CAMEL handling for a network Dialed Service for mobile originated calls */*

/ Signals to/from the left are to/from the parent process; signals to/from the right are to/from the gsmSSF. */*



Procedure CAMEL_NDS_CF_INIT

4(4)

/* Procedure in the MSC to perform CAMEL handling for a network Dialed Service for mobile originated calls */

/* Signals to/from the left are to/from the parent process; signals to/from the right are to/from the gsmSSF. */

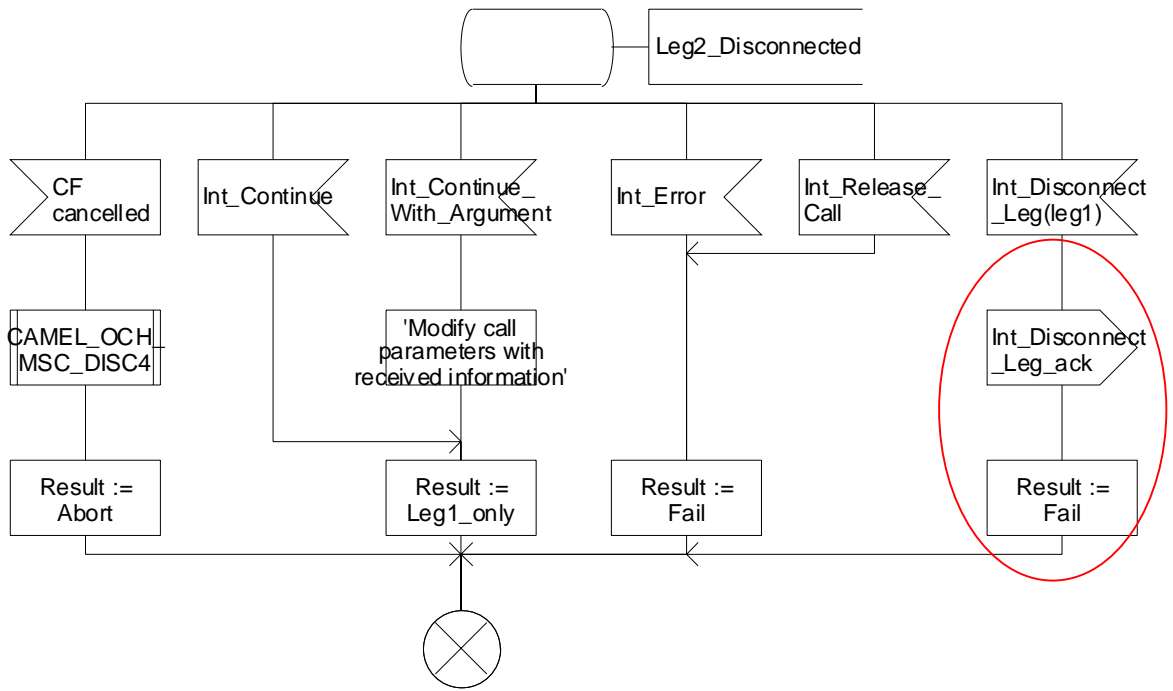


Figure 4.79-4: Procedure CAMEL_NDS_CF_INIT (sheet 4)

CHANGE REQUEST

⌘ **23.078 CR 657** ⌘ rev **-** ⌘ Current version: **6.0.0** ⌘

For **HELP** on using this form, see bottom of this page or look at the pop-up text over the ⌘ symbols.

Proposed change affects: UICC apps ME Radio Access Network Core Network

Title:	⌘ No receipt of Int_DP_Analysed_Information in state Monitoring		
Source:	⌘ Alcatel		
Work item code:	⌘ EDCAMEL	Date:	⌘ 30/01/2004
Category:	⌘ D	Release:	⌘ Rel-6
	Use <u>one</u> of the following categories: F (correction) A (corresponds to a correction in an earlier release) B (addition of feature), C (functional modification of feature) D (editorial modification) Detailed explanations of the above categories can be found in 3GPP TR 21.900 .		Use <u>one</u> of the following releases: 2 (GSM Phase 2) R96 (Release 1996) R97 (Release 1997) R98 (Release 1998) R99 (Release 1999) Rel-4 (Release 4) Rel-5 (Release 5) Rel-6 (Release 6)

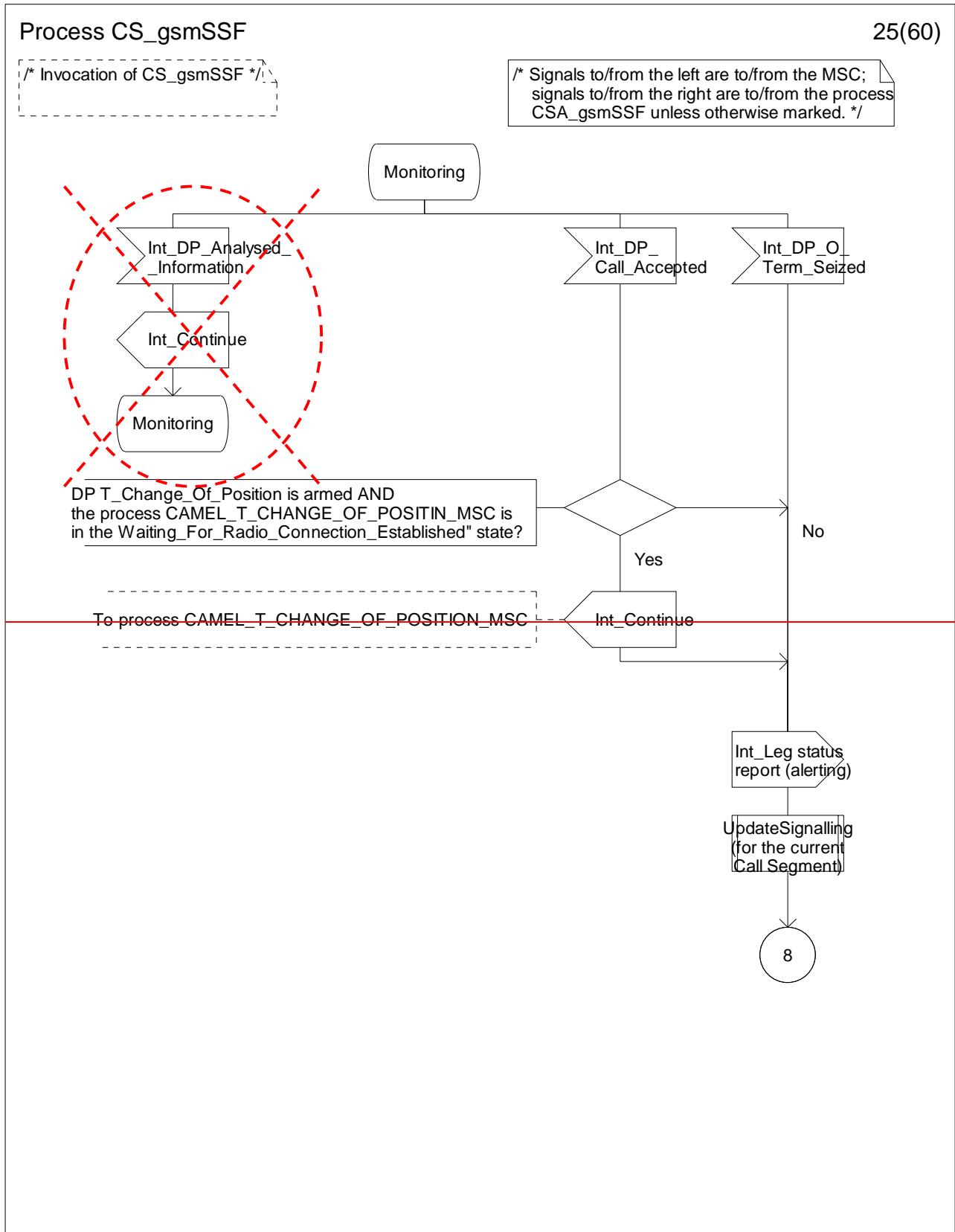
Reason for change:	⌘ The signal Int_DP_Analysed_Information is sent only in the following SDL procedures: CAMEL_SDS_MO_Init, CAMEL_NDS_MO_INIT, CAMEL_SDS_CF_INIT and CAMEL_NDS_CF_INIT. In those procedures, at first the Process CS_gsmSSF is invoked and just after that the signal is send to that process. Invocation of the Process CS_gsmSSF leaves the process in state Wait_For_Request. Therefore, the CS_gsmSSF process is not in the state Monitoring and the receipt of Int_DP_Analysed_Information in that state can be deleted from the SDLs.
Summary of change:	⌘ Deletion of receipt of Int_DP_Analysed_Information in Process CS_gsmSSF in state Monitoring.
Consequences if not approved:	⌘ The SDLs are unnecessary complex and may be misleading.

Clauses affected:	⌘ 4.5.7.5										
Other specs affected:	<table border="1" style="display: inline-table; border-collapse: collapse;"> <tr> <td style="width: 20px; text-align: center;">Y</td> <td style="width: 20px; text-align: center;">N</td> </tr> <tr> <td style="width: 20px; text-align: center;"> </td> <td style="width: 20px; text-align: center;"> </td> </tr> <tr> <td style="width: 20px; text-align: center;"> </td> <td style="width: 20px; text-align: center;"> </td> </tr> <tr> <td style="width: 20px; text-align: center;"> </td> <td style="width: 20px; text-align: center;"> </td> </tr> </table> Other core specifications ⌘ Test specifications ⌘ O&M Specifications ⌘	Y	N								
Y	N										
Other comments:	⌘ Although this error occurs already in previous releases, it is recommended due to the editorial nature not to change those specifications.										

— **First modified section** —

4.5.7.5 Process CS_gsmSSF and procedures

...



Process CS_gsmSSF

25(60)

/* Invocation of CS_gsmSSF */

/* Signals to/from the left are to/from the MSC; signals to/from the right are to/from the process CSA_gsmSSF unless otherwise marked. */

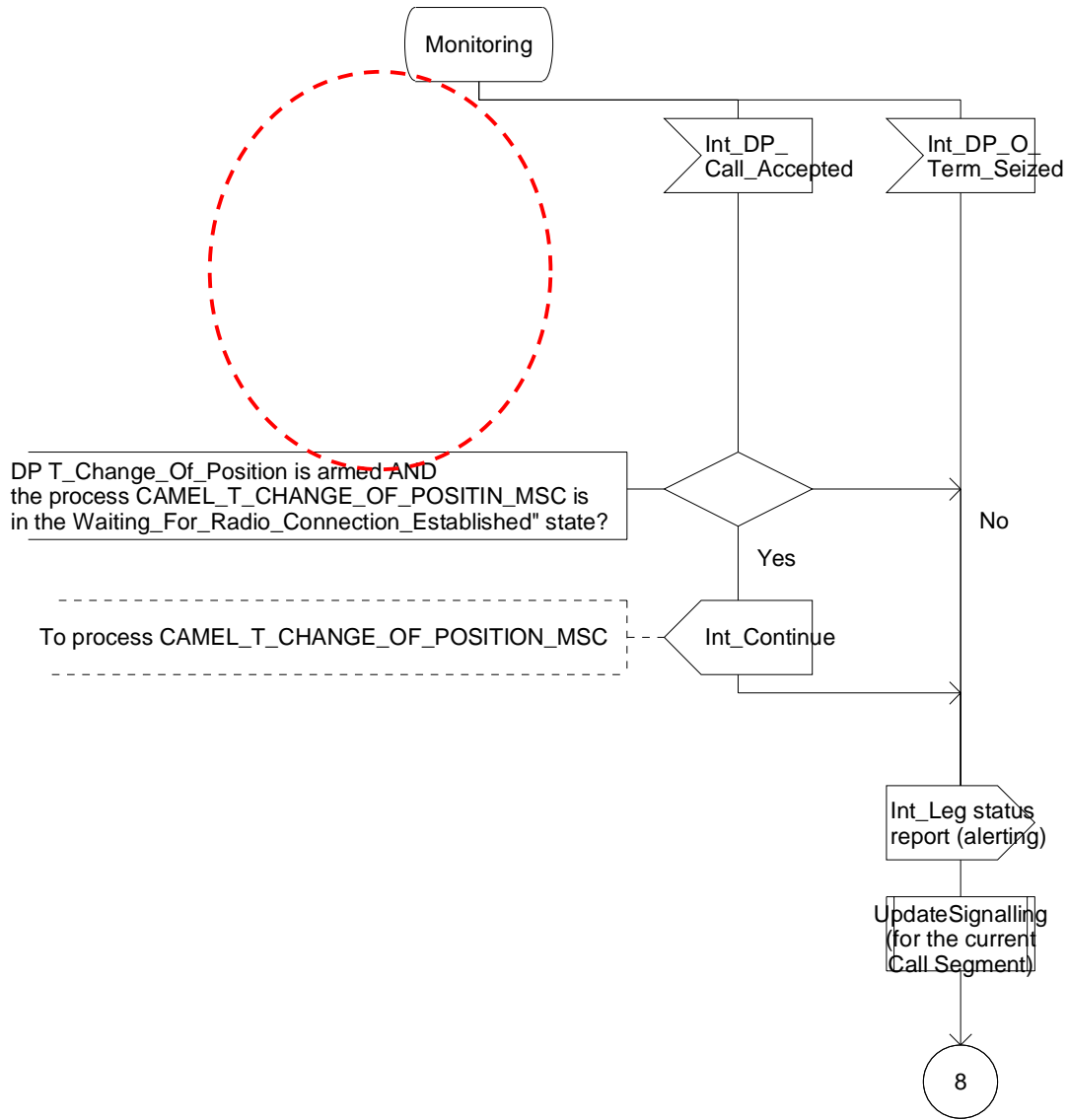


Figure 4.97-25: Process CS_gsmSSF (sheet 25)

— END —