

3GPP TSG CN Plenary Meeting #21
17th - 19th September 2003. Frankfurt, Germany.

NP-030363

Source: TSG CN WG2
Title: CRs on Rel-5 Work Item CAMEL4
Agenda item: 8.3
Document for: APPROVAL

Introduction:

This document contains **4** CRs on **Rel-5 Work Item CAMEL4**. These CRs have been agreed by TSG CN WG2 and are forwarded to TSG CN Plenary meeting for approval.

WG_tdoc	Title	Spec	CR	Rev	Cat	Rel	C_Ver
N2-030351	Correction to procedure Handle_O_Answer	23.078	608		F	Rel-5	5.4.0
N2-030398	Direction change of incoming message Answer	23.078	584		F	Rel-5	5.4.0
N2-030403	Receiving Int_CWA after reporting Abandon	23.078	612	1	F	Rel-5	5.4.0
N2-030426	Correction of "pty continues" and "LegActive" check boxes in SDL's	23.078	610	1	F	Rel-5	5.4.0

CHANGE REQUEST

⌘ 23.078 CR 608 ⌘ rev ⌘ Current version: 5.4.0 ⌘

Proposed change affects: UICC apps ME Radio Access Network Core Network

Title: ⌘ Correction to procedure Handle_O_Answer

Source: ⌘ Ericsson

Work item code: ⌘ CAMEL4 **Date:** ⌘ 21 July 2003

Category: ⌘ **F** (essential correction) **Release:** ⌘ Rel-5

Use one of the following categories:

F (correction)	2 (GSM Phase 2)
A (corresponds to a correction in an earlier release)	R96 (Release 1996)
B (addition of feature),	R97 (Release 1997)
C (functional modification of feature)	R98 (Release 1998)
D (editorial modification)	R99 (Release 1999)
	Rel-4 (Release 4)
	Rel-5 (Release 5)
	Rel-6 (Release 6)

Reason for change: ⌘ A correction is needed in procedure Handle_O_Answer. This procedure contains a check "**Destination Address received in int_O_Answer?**". However, consider the following:

- procedure Handle_O_Answer is called from with process CS_gsmSSF (sheets 12, 27);
- process CS_gsmSSF receives signal Int_DP_O_Answer from procedures CAMEL_OCH_MSC_ANSWER, figure 4.15, CAMEL_CF_MSC_ANSWER, figure 4.79 and CAMEL_ICA_MSC_ANSWER, figure 4.87. The signal flow between these procedures and CS_gsmSSF does not indicate that **Destination Address** may be carried in that signal.
- The procedures / processes in TS 23.018 which call the above listed CAMEL procedures, do not pass on a **Destination Address**, when calling these procedures.

Hence, it is not correct for CS_gsmSSF, in procedure Handle_O_Answer, to check the presence of a parameter **Destination Address** in the Int_DP_O_Answer signal, since that signal will never carry a **Destination Address**. Therefore, this check shall be removed from Handle_O_Answer.

Moreover, the Destination Address which shall be reported by gsmSSF to gsmSCF, is not dependent on a process other than gsmSSF itself. The Destination Address is stored within process gsmSSF or by procedure CAMEL_Store_Destination_Address, which is called from TS 23.018.

Furthermore, gsmSSF shall not report a Destination Address which the MSC receives from a source external to the logical border of that MSC, such as Connected Number in ISUP ANM or ISUP CON.

Summary of change: ⌘ Remove the check for Destination Address in Handle_O_Answer.

Consequences if not approved: ⌘ - procedure Handle_O_Answer can not be implemented;
- designers may assume that Connected Number in ISUP ANM or ISUP CON may need to be reported to SCP, which is not required.

Clauses affected: ⌘ 4.5.7.5

	Y	N		
Other specs affected:	⌘	X	Other core specifications	⌘
		X	Test specifications	
		X	O&M Specifications	

Other comments: ⌘ Process Handle_T_Answer is copied for information.

***** First Modification *****

4.5.7.5 Process CS_gsmSSF and procedures

Procedure Handle_O_Answer

1(1)

/* Procedure in the gsmSSF to handle notification of originating answer from the MSC */
FPAR IN legID LegType

/* Signals to/from the left are to/from the MSC. */

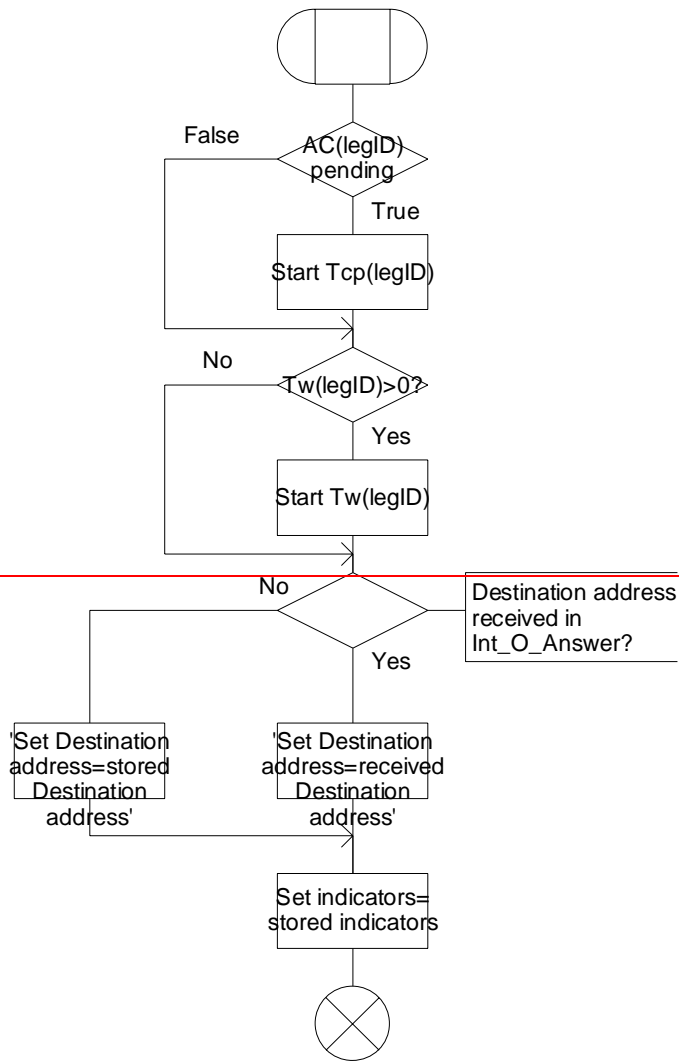


Figure 4.106-1: Procedure Handle_O_Answer (sheet 1)

Procedure Handle_O_Answer

1(1)

/* Procedure in the to handle notification originating answer from the MSC FPAR IN legId LegType

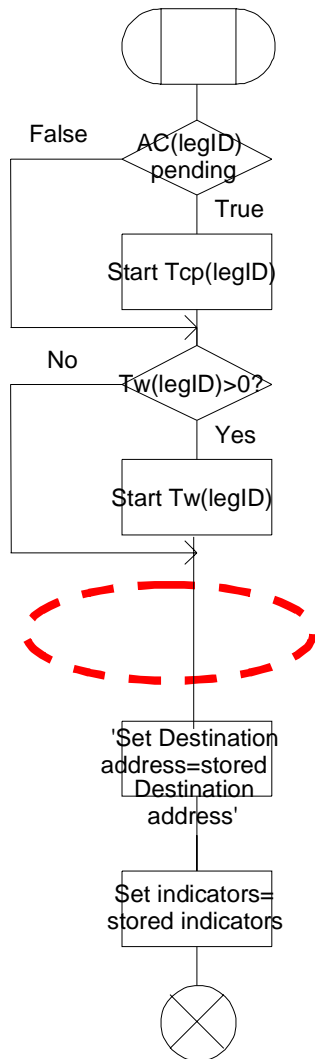


Figure 4.106-1: Procedure Handle O Answer (sheet 1)

Procedure Handle_T_Answer

1(1)

/* Procedure in the gsmSSF to handle notification of terminating answer from the MSC */
 FPAR IN legId LegType

/* Signals to/from the left are to/from the MSC. */

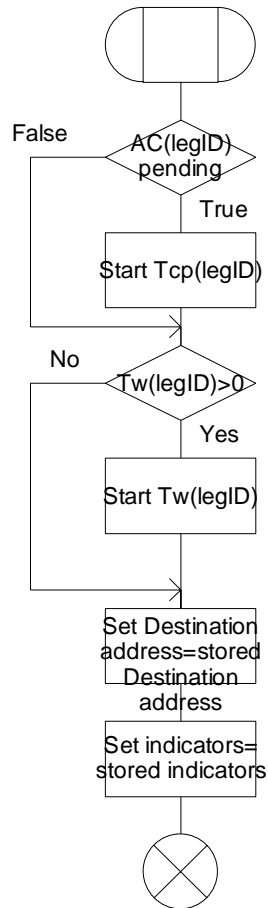


Figure 4.107-1: Procedure Handle_T_Answer (sheet 1)

***** End of Document *****

CHANGE REQUEST

⌘ **23.078 CR 584** ⌘ rev **-** ⌘ Current version: **5.4.0** ⌘

For **HELP** on using this form, see bottom of this page or look at the pop-up text over the ⌘ symbols.

Proposed change affects: UICC apps ME Radio Access Network Core Network

Title:	⌘ Direction change of incoming message Answer		
Source:	⌘ Siemens AG		
Work item code:	⌘ CAMEL4	Date:	⌘ 14/08/2003
Category:	⌘ F (essential correction)	Release:	⌘ Rel-5
	Use <u>one</u> of the following categories:		Use <u>one</u> of the following releases:
	F (correction)		2 (GSM Phase 2)
	A (corresponds to a correction in an earlier release)		R96 (Release 1996)
	B (addition of feature),		R97 (Release 1997)
	C (functional modification of feature)		R98 (Release 1998)
	D (editorial modification)		R99 (Release 1999)
	Detailed explanations of the above categories can be found in 3GPP TR 21.900 .		Rel-4 (Release 4)
			Rel-5 (Release 5)
			Rel-6 (Release 6)

Reason for change:	⌘ In SDL: Procedure CAMEL_ICA_MSC_ALERTING, when MSC is at the state DP_O_Term_Seized, one of the signals received is ISUP:Answer message. This message shall be received from the destination exchange (from right), not from the gsmSSF (from left).
Summary of change:	⌘ "Flip" the signal symbol
Consequences if not approved:	⌘ It never happens! The result from this procedure as "Answer" would not be output, even if the called party answers, and the calling procedure would not be able to handle the result "Answer". This would lead CHP malfunctioning.

Clauses affected:	⌘ 4						
Other specs affected:	<table border="1" style="display: inline-table; border-collapse: collapse;"> <tr> <td style="width: 20px; text-align: center;">Y</td> <td style="width: 20px; text-align: center;">N</td> </tr> <tr> <td style="text-align: center;">⌘</td> <td style="text-align: center;">X</td> </tr> </table>	Y	N	⌘	X	Other core specifications	⌘
Y	N						
⌘	X						
	<table border="1" style="display: inline-table; border-collapse: collapse;"> <tr> <td style="text-align: center;">⌘</td> <td style="text-align: center;">X</td> </tr> </table>	⌘	X	Test specifications			
⌘	X						
	<table border="1" style="display: inline-table; border-collapse: collapse;"> <tr> <td style="text-align: center;">⌘</td> <td style="text-align: center;">X</td> </tr> </table>	⌘	X	O&M Specifications			
⌘	X						
Other comments:	⌘						

Error! No text of specified style in document.

2

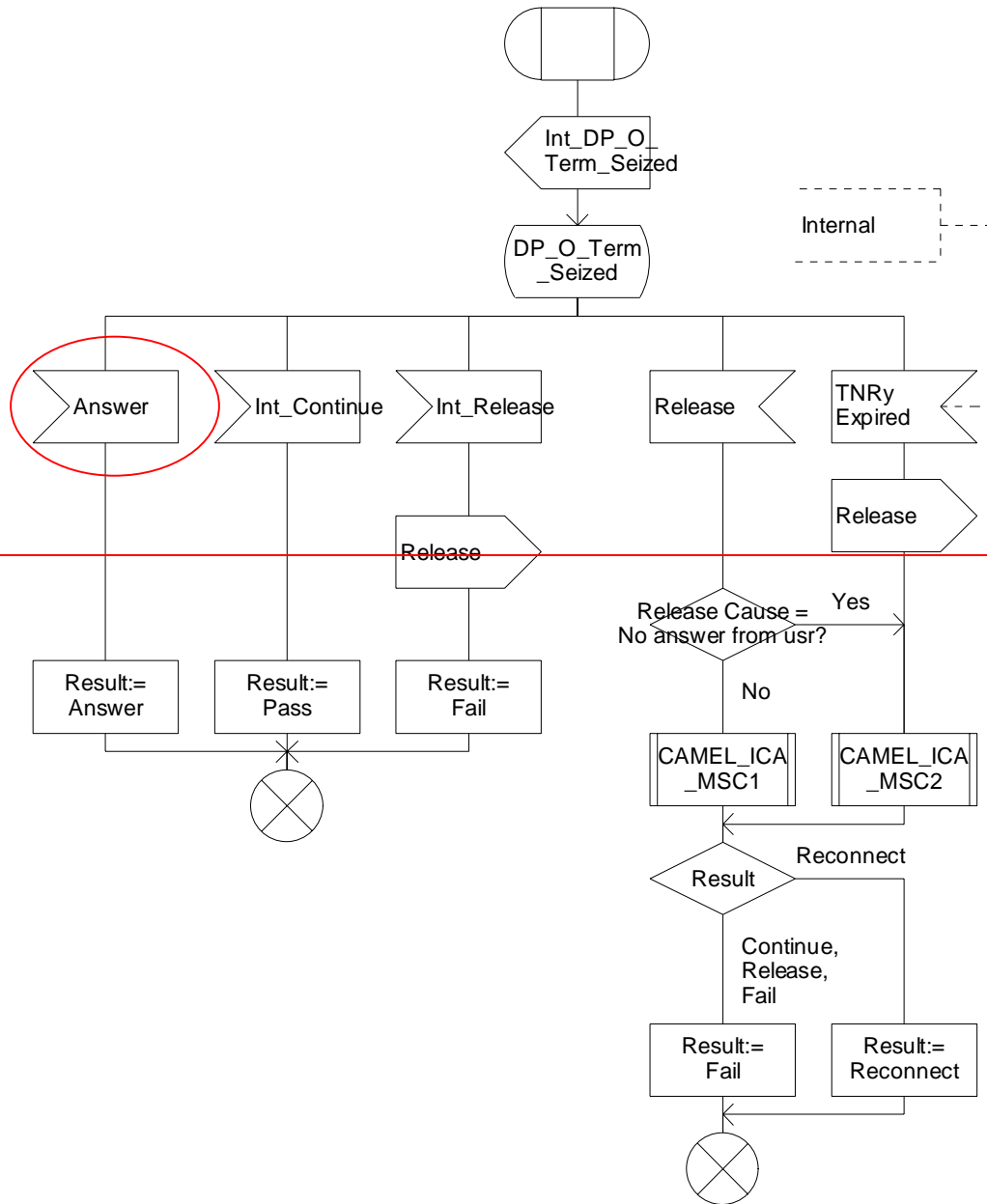
Error! No text of specified style in document.

Procedure CAMEL_ICA_MSC_ALERTING

1(2)

/* Procedure in the MSC to inform the gsmSSF that the call is in the alerting phase */

/* Signals to/from the left are to/from the gsmSSF; Signals to/from the right are to/from the destination exchange; unless otherwise stated. */



Procedure CAMEL_ICA_MSC_ALERTING

1(2)

/* Procedure in the MSC to inform the gsmSSF that the call is in the alerting phase */

/* Signals to/from the left are to/from the gsmSSF; Signals to/from the right are to/from the destination exchange; unless otherwise stated. */

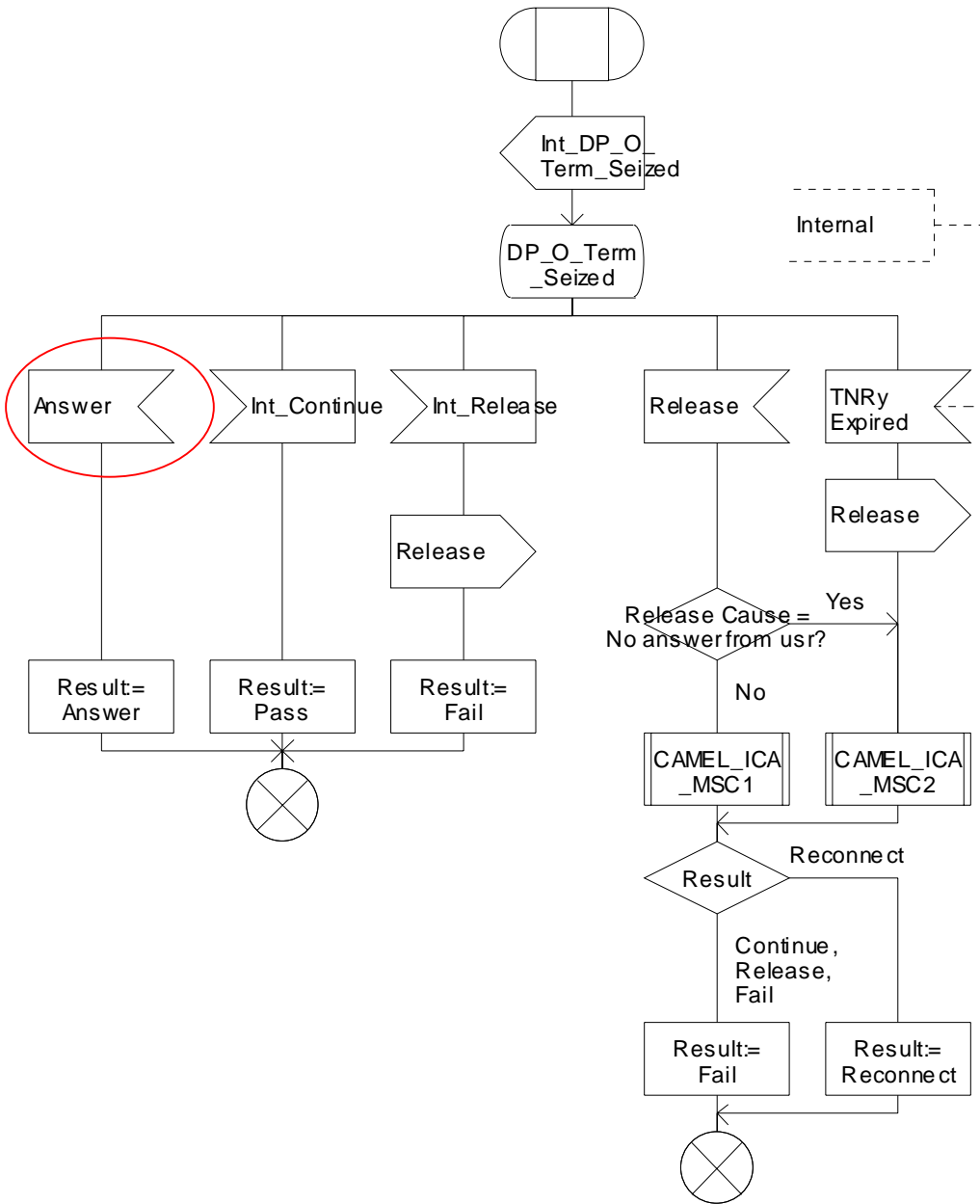


Figure 4.86-1: Procedure CAMEL_ICA_MSC_ALERTING (sheet 1)

Procedure CAMEL_ICA_MSC_ALERTING

2(2)

/* Procedure in the MSC to inform the gsmSSF that the call is in the alerting phase */

/* Signals to/from the left are to/from the gsmSSF; Signals to/from the right are to/from the destination exchange; unless otherwise stated. */

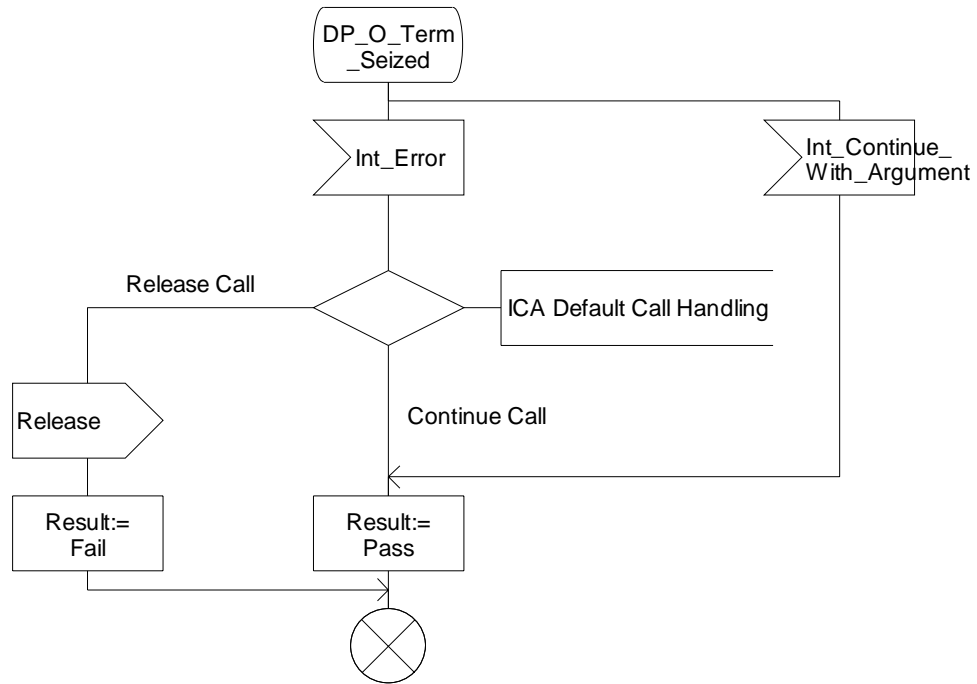


Figure 4.86-2: Process CAMEL_ICA_MSC_ALERTING (sheet 2)

Error! No text of specified style in document.

6

Error! No text of specified style in document.

CR-Form-v7
CHANGE REQUEST
⌘ 23.078 CR 612 ⌘ rev 1 ⌘ Current version: 5.4.0 ⌘

For **HELP** on using this form, see bottom of this page or look at the pop-up text over the ⌘ symbols.

Proposed change affects: UICC apps ME Radio Access Network Core Network

Title:	⌘ Receiving Int_CWA after reporting Abandon		
Source:	⌘ Nortel Networks		
Work item code:	⌘ CAMEL4	Date:	⌘ 14/08/2003
Category:	⌘ F (essential correction) Use <u>one</u> of the following categories: F (correction) A (corresponds to a correction in an earlier release) B (addition of feature), C (functional modification of feature) D (editorial modification) Detailed explanations of the above categories can be found in 3GPP TR 21.900 .	Release:	⌘ Rel-5 Use <u>one</u> of the following releases: 2 (GSM Phase 2) R96 (Release 1996) R97 (Release 1997) R98 (Release 1998) R99 (Release 1999) Rel-4 (Release 4) Rel-5 (Release 5) Rel-6 (Release 6)

Reason for change:	⌘ CR572r1, approved at CN#20, corrected the MSC Procedures that report T_Abandon to the gsmSSF such that the MSC could receive Int_Continue_With_Argument as a response. This capability is already reflected in the MO MSC Procedures for O_Abandon, except for Figure 4.14-1: Procedure CAMEL_OCH_MSC_ALERTING (sheet 1). This CR corrects this figure.
Summary of change:	⌘ Update Figure 4.14-1 to show that the MSC procedure that reports O_Abandon to the gsmSSF, and where the gsmSSF may report the event to the gsmSCF as EDP-R, shall be able to receive Int_Continue_With_Argument.
Consequences if not approved:	⌘ Malfunctioning system. When a gsmSCF responds with CAP Continue With Argument after Abandon EDP-R, then the MSC may not receive this signal and the MSC process may 'hang'.

Clauses affected:	⌘ Figure 4.14-1 Procedure CAMEL_OCH_MSC_ALERTING(Sheet 1)										
Other specs affected:	<table border="1" style="display: inline-table; border-collapse: collapse; text-align: center;"> <tr> <td style="width: 20px;">Y</td> <td style="width: 20px;">N</td> </tr> <tr> <td style="width: 20px;"> </td> <td style="width: 20px;">X</td> </tr> <tr> <td style="width: 20px;"> </td> <td style="width: 20px;">X</td> </tr> <tr> <td style="width: 20px;"> </td> <td style="width: 20px;">X</td> </tr> </table> Other core specifications ⌘ Test specifications ⌘ O&M Specifications ⌘	Y	N		X		X		X		
Y	N										
	X										
	X										
	X										
Other comments:	⌘ Missing text 'To destination exchange' also added to Release signals in Figure 4.14 and 4.15.										

How to create CRs using this form:

Comprehensive information and tips about how to create CRs can be found at <http://www.3gpp.org/specs/CR.htm>. Below is a brief summary:

- 1) Fill out the above form. The symbols above marked ⌘ contain pop-up help information about the field that they are closest to.
- 2) Obtain the latest version for the release of the specification to which the change is proposed. Use the MS Word "revision marks" feature (also known as "track changes") when making the changes. All 3GPP specifications can be downloaded from the 3GPP server under <ftp://ftp.3gpp.org/specs/> For the latest version, look for the directory name with the latest date e.g. 2001-03 contains the specifications resulting from the March 2001 TSG meetings.
- 3) With "track changes" disabled, paste the entire CR form (use CTRL-A to select it) into the specification just in front of the clause containing the first piece of changed text. Delete those parts of the specification which are not relevant to the change request.

Error! No text of specified style in document.

3

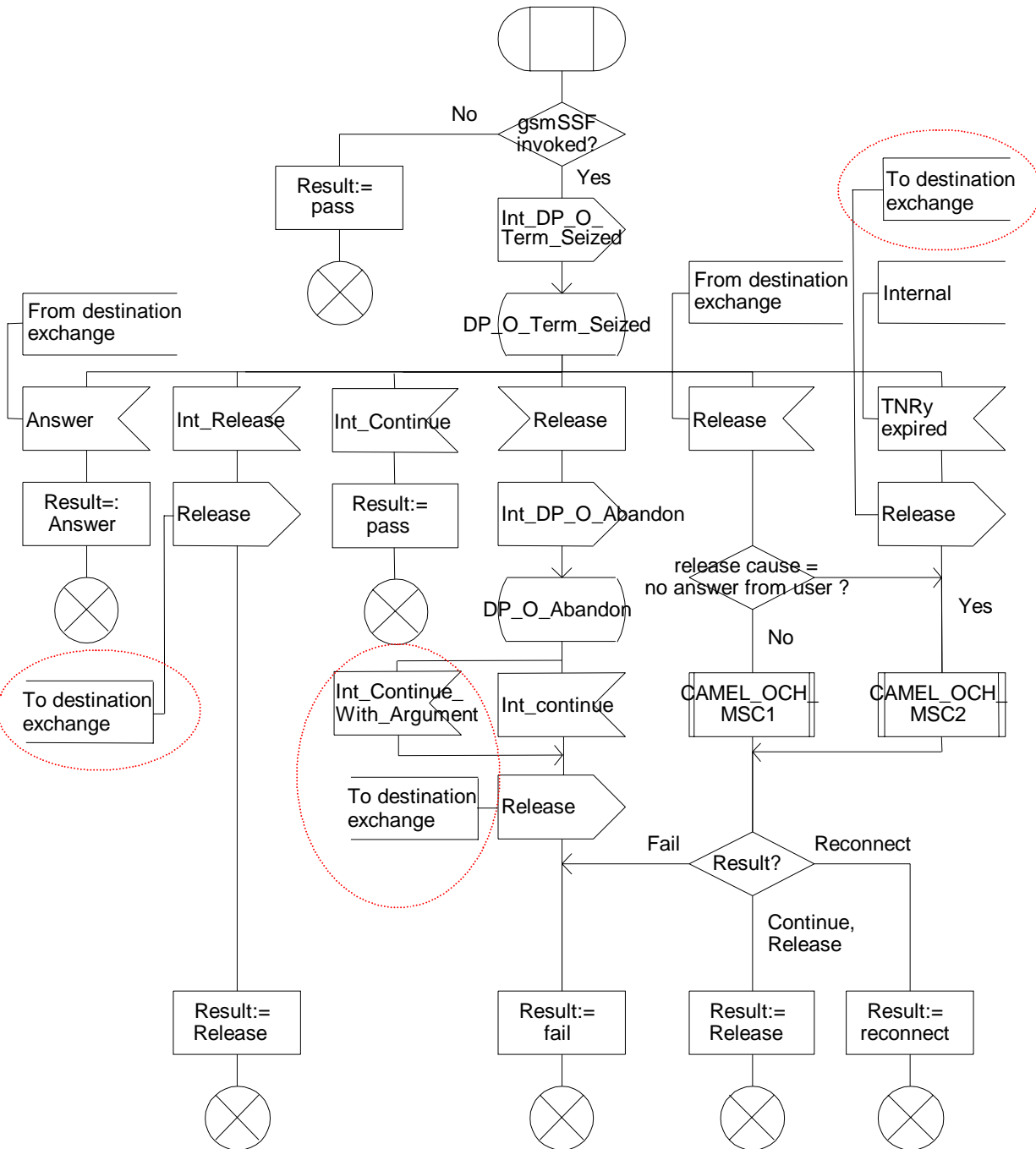
Error! No text of specified style in document.

Procedure CAMEL_OCH_MSC_ALERTING

1(2)

/* Procedure in the MSC to inform the gsmSSF that the call is in the alerting phase */

/* Signals to/from the left are to/from the BSS; signals to/from the right are to/from the gsmSSF if not otherwise stated. */



Procedure CAMEL_OCH_MSC_ALERTING

1(2)

/* Procedure in the MSC to inform the gsmSSF that the call is in the alerting phase */

/* Signals to/from the left are to/from the BSS; signals to/from the right are to/from the gsmSSF if not otherwise stated. */

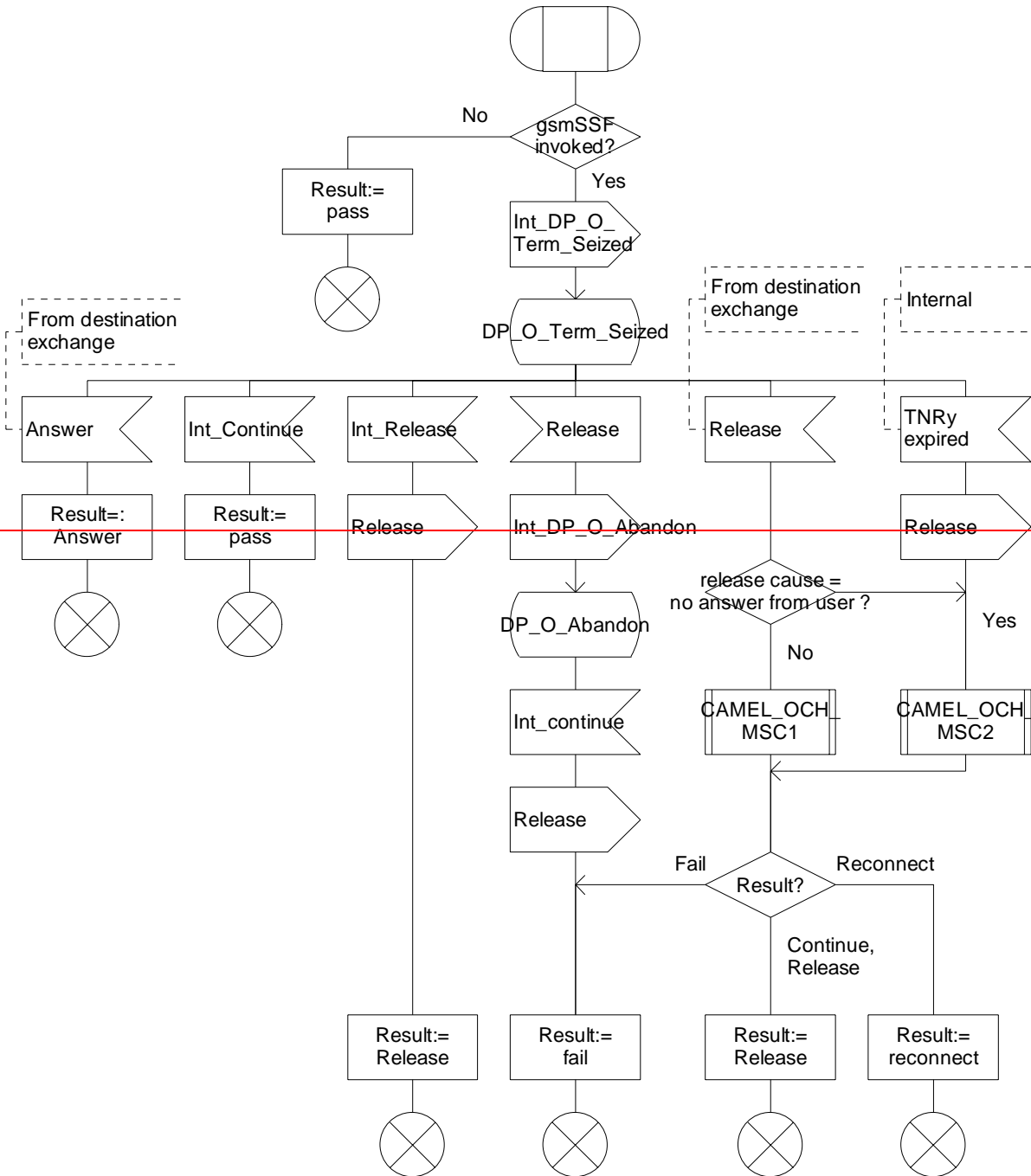


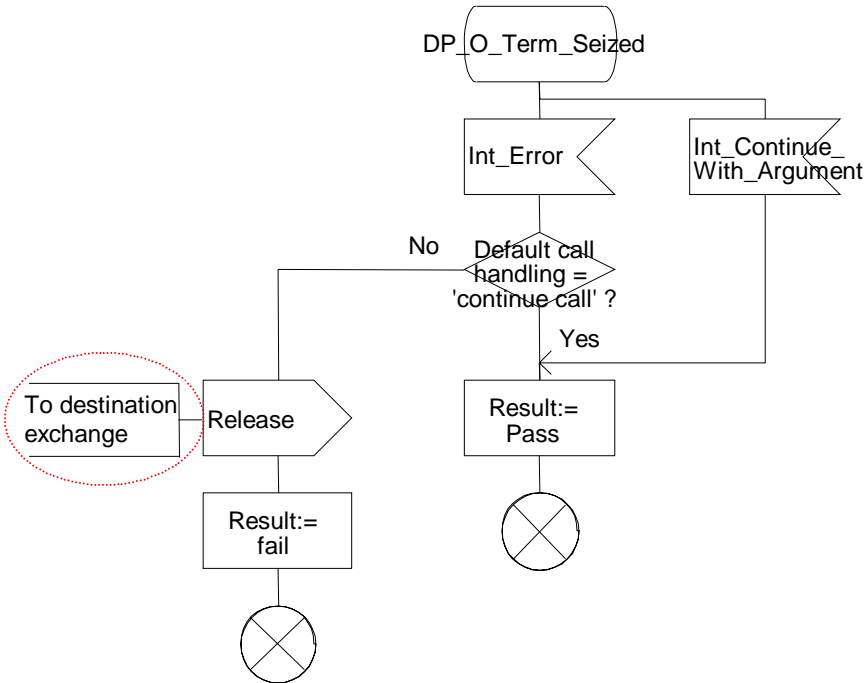
Figure Error! Reference source not found..1-1: Procedure CAMEL_OCH_MSC_ALERTING (sheet 1)

Procedure CAMEL_OCH_MSC_ALERTING

2(2)

/* Procedure in the MSC to inform the gsmSSF that the call is in the alerting phase */

/* Signals to/from the left are to/from the BSS; signals to/from the right are to/from the gsmSSF if not otherwise stated. */



Procedure CAMEL_OCH_MSC_ALERTING

2(2)

/* Procedure in the MSC to inform the gsmSSF that the call is in the alerting phase */

/* Signals to/from the left are to/from the BSS; signals to/from the right are to/from the gsmSSF if not otherwise stated. */

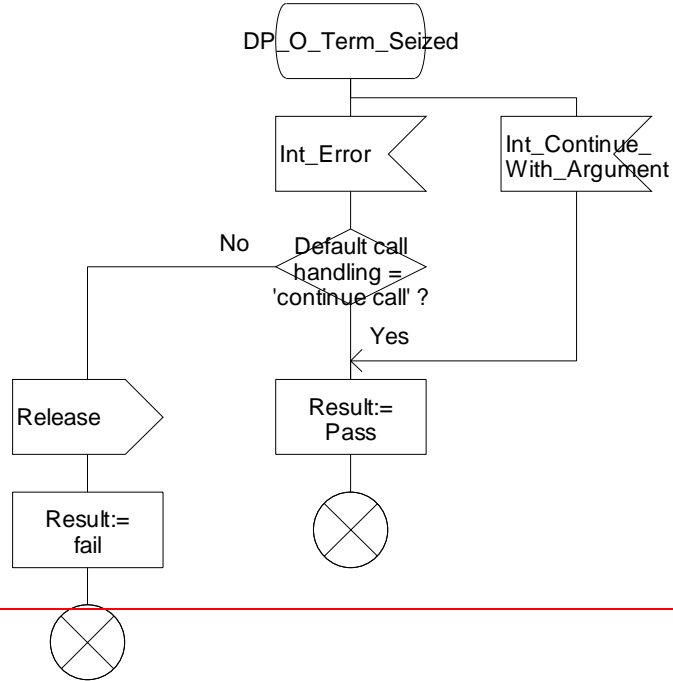


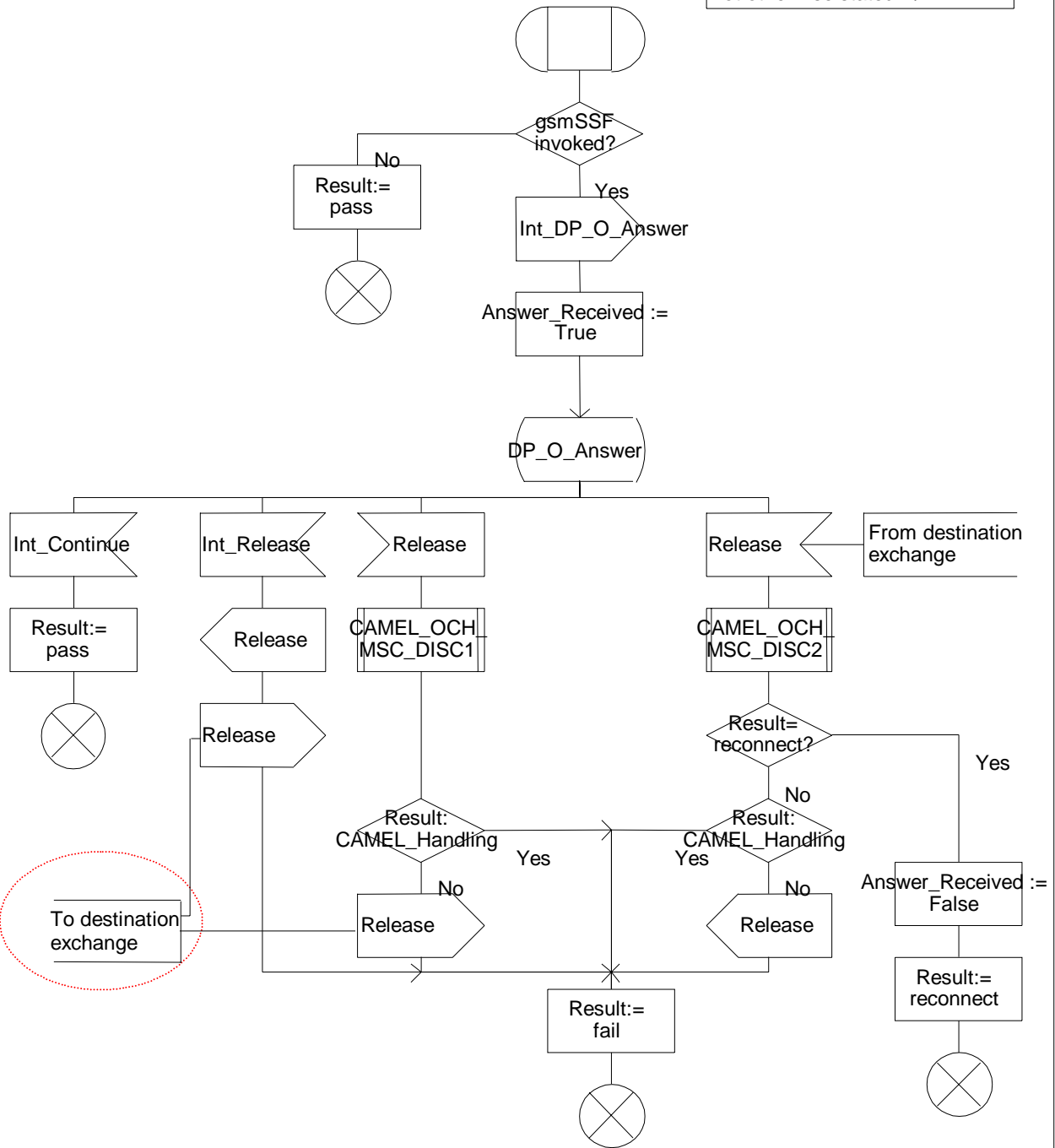
Figure Error! Reference source not found..1-2: Procedure CAMEL_OCH_MSC_ALERTING (sheet 2)

Procedure CAMEL_OCH_MSC_ANSWER

1(2)

/* Procedure in the MSC to handle an outgoing call */

/* Signals to/from the left are to/from the BSS; signals to/from the right are to/from the gsmSSF if not otherwise stated. */



Procedure CAMEL_OCH_MSC_ANSWER

1(2)

/* Procedure in the MSC to handle an outgoing call */

/* Signals to/from the left are to/from the BSS; signals to/from the right are to/from the gsmSSF if not otherwise stated. */

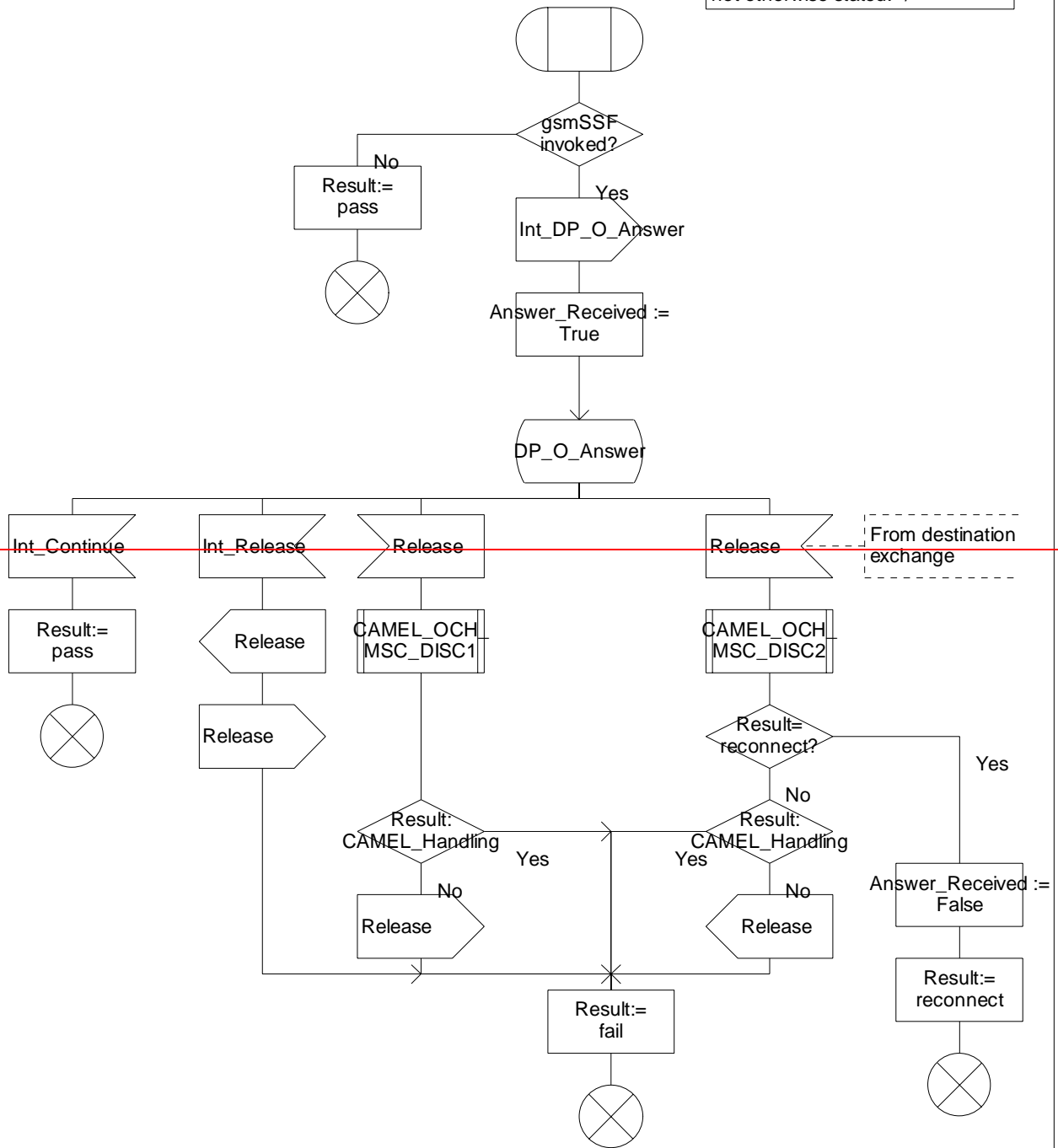


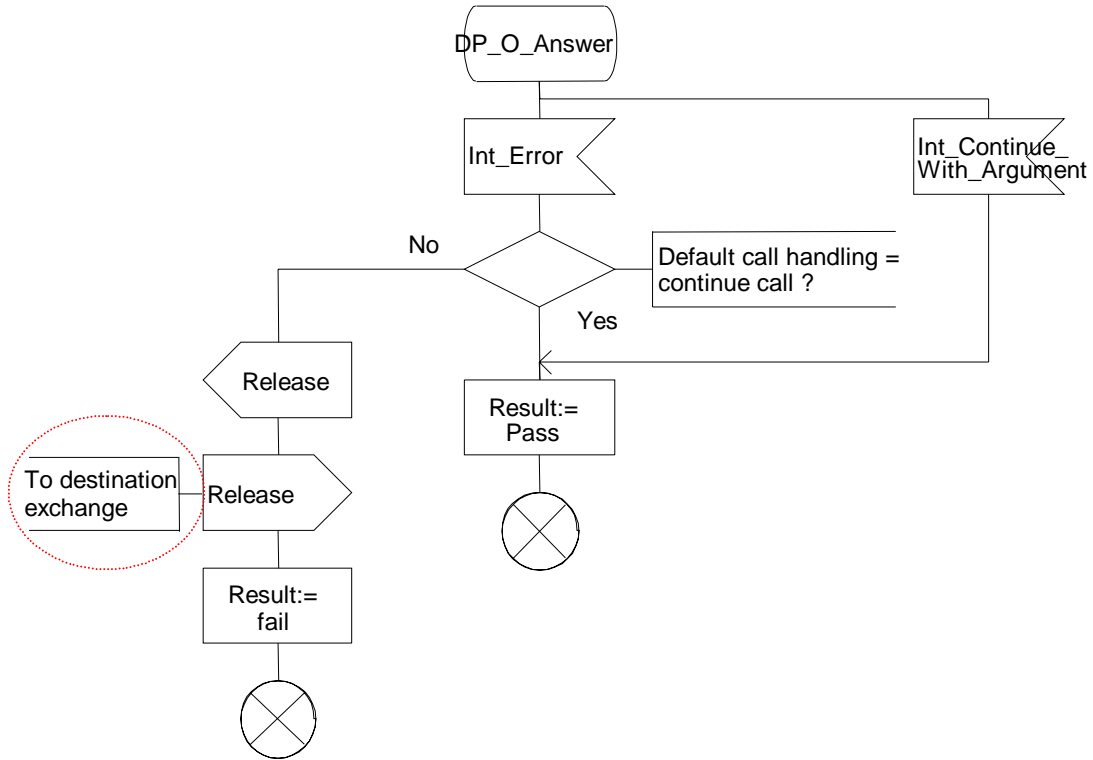
Figure Error! Reference source not found..2-1: Procedure CAMEL_OCH_MSC_ANSWER (sheet 1)

Procedure CAMEL_OCH_MSC_ANSWER

2(2)

/* Procedure in the MSC to handle an outgoing call */

/* Signals to/from the left are to/from the BSS; signals to/from the right are to/from the gsmSSF if not otherwise stated. */



Procedure CAMEL_OCH_MSC_ANSWER

2(2)

/* Procedure in the MSC to handle an outgoing call */

/* Signals to/from the left are to/from the BSS; signals to/from the right are to/from the gsmSSF if not otherwise stated. */

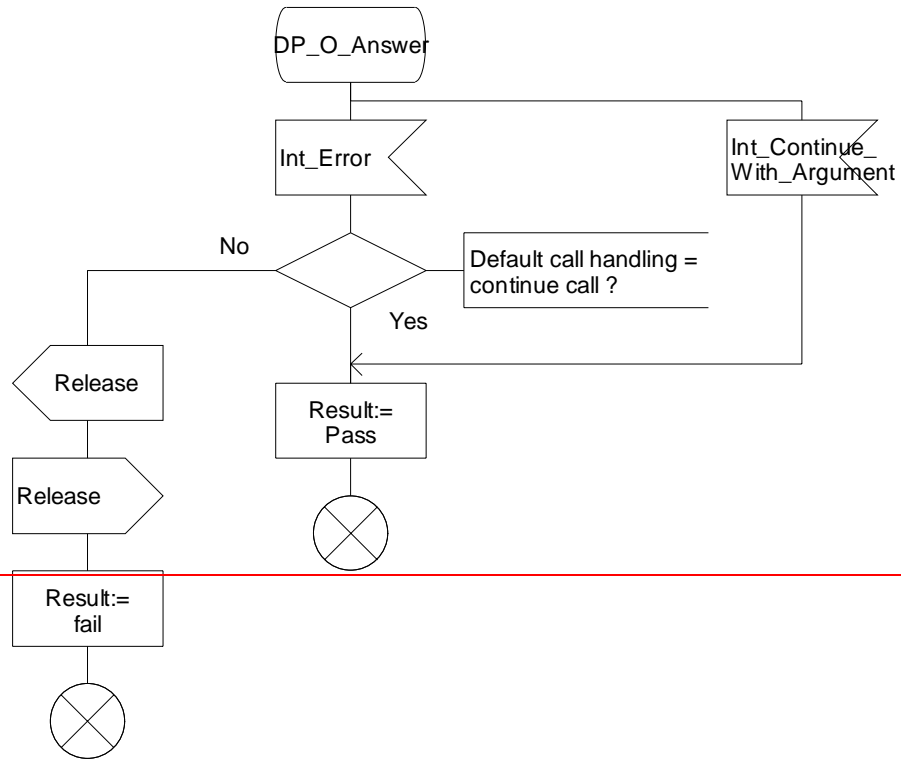


Figure Error! Reference source not found..2-2: Procedure CAMEL_OCH_ANSWER (sheet 2)

CHANGE REQUEST

⌘ **23.078 CR 610** ⌘ rev **1** ⌘ Current version: **5.4.0** ⌘

For **HELP** on using this form, see bottom of this page or look at the pop-up text over the ⌘ symbols.

Proposed change affects: UICC apps ME Radio Access Network Core Network

Title:	⌘ Correction of “pty continues” and “LegActive” check boxes in SDL’s.		
Source:	⌘ Hughes Software Systems		
Work item code:	⌘ CAMEL4	Date:	⌘ 26/08/2003
Category:	⌘ F	Release:	⌘ Rel-5
	Use <u>one</u> of the following categories:		Use <u>one</u> of the following releases:
	F (correction)		2 (GSM Phase 2)
	A (corresponds to a correction in an earlier release)		R96 (Release 1996)
	B (addition of feature),		R97 (Release 1997)
	C (functional modification of feature)		R98 (Release 1998)
	D (editorial modification)		R99 (Release 1999)
	Detailed explanations of the above categories can be found in 3GPP TR 21.900 .		Rel-4 (Release 4)
			Rel-5 (Release 5)
			Rel-6 (Release 6)

Reason for change:	⌘ In the SDL “procedure Handle_ACR”, there is a check box “pty continues”. But the specifications does not provide any clarification about what does “pty continues” means and when does it acquires the value YES or NO. In the Figure 4.95-1: Process CS_gsmSSF (sheet 1), “pty” is defined to be a Leg-ID or an SRF-ID. Also, there is a flag LegActive defined in the SDL figures 4.95-36 and 4.95-51 which becomes TRUE for SSF when sending ACReport to SCF and the call (or connection) is still active. Now refer the following figures (SDLs), Figure 4.95-21 and 4.95-34: Process CS_gsmSSF (sheet 21 and 34) :: flag LegActive becomes FALSE when handling event Int_ReleaseCall in WFI and Monitoring state respectively. Figure 4.95-23 and 4.95-31: Process CS_gsmSSF (sheet 23 and 31) :: flag LegActive becomes FALSE when handling event Int_O/T_Exception in WFI and Monitoring state respectively. Figure 4.95-29: Process CS_gsmSSF (sheet 29) :: flag LegActive becomes FALSE when handling DPs O/T-No-Answer, O/T-Busy and Route_Select_Failure in Monitoring state. Figure 4.95-38: Process CS_gsmSSF (sheet 38) :: flag LegActive becomes FALSE when handling event Int_TC_Release and DFC operation in WFEOTC state. Figure 4.95-39: Process CS_gsmSSF (sheet 39) :: flag LegActive becomes FALSE when handling event Int_SRF_Release, DFC and DFCWA operations in WFEOUI state. Figure 4.95-45: Process CS_gsmSSF (sheet 45) :: flag LegActive becomes FALSE when handling DPs O/T-Disconnect and O/T-Abandon in WFI, Monitoring, WFEOUI and WFEOTC states.
---------------------------	--

Figure 4.95-36 and 4.95-51: Process CS_gsmSSF (sheet 36 and 51) :: flag LegActive becomes FALSE when handling Tcp timer expiry in Monitoring and WFEUI/WFEOTC states respectively and the call (or connection) is being released.

In all the above mentioned SDLs, the call (or connection) becomes inactive and doesn't continue along with the flag LegActive becoming FALSE. Thus, we can conclude that the check "pty continues" depends on the flag "LegActive". As the term "pty continues" doesn't have any clarification in the specifications and is ambiguous, it is advisable to change the decision box "pty continues" with the decision box "LegActive".

Now refer the following figure (SDL),
 Figure 4.95-36: Process CS_gsmSSF (sheet 36) :: In the case of handling Tcp expiry in Monitoring state, when the release is not for the last leg of CS, the flag LegActive value is not set at the Handle_ACR task box. This has been missed here, unlike all the other figures(SDLs) mentioned above.

Summary of change: ⌘ In the SDL, "procedure Handle_ACR", the decision box "pty continues" is replaced by the decision box "LegActive". The values Yes and No for "pty continues" are replaced by values True and False for "LegActive" respectively.

In the SDL Figure 4.95-36: Process CS_gsmSSF (sheet 36), the value for LegActive = FALSE is mentioned at the Handle_ACR task box in case of handling Tcp expiry in Monitoring state when the release is not for the last leg of CS.

Consequences if not approved: ⌘ Insufficient explanation of "pty continues" check box in specification will lead to inconsistency in implementation of SDL's.
 Absence of "LegActive := FALSE" check box in SDL Figure 4.95-36 will lead to improper processing of "procedure Handle_ACR" when the release is not for the last leg of CS. This will cause inter-working problems if SCP and MSC have different understanding what is reported when non-last leg is released due to call period timer.

Clauses affected: ⌘ 4.5.7.5

	Y	N	
Other specs affected: ⌘		X	Other core specifications ⌘
		X	Test specifications
		X	O&M Specifications

Other comments: ⌘

How to create CRs using this form:

Comprehensive information and tips about how to create CRs can be found at <http://www.3gpp.org/specs/CR.htm>.

Below is a brief summary:

- 1) Fill out the above form. The symbols above marked ⌘ contain pop-up help information about the field that they are closest to.
- 2) Obtain the latest version for the release of the specification to which the change is proposed. Use the MS Word "revision marks" feature (also known as "track changes") when making the changes. All 3GPP specifications can be downloaded from the 3GPP server under <ftp://ftp.3gpp.org/specs/>. For the latest version, look for the directory name with the latest date e.g. 2001-03 contains the specifications resulting from the March 2001 TSG meetings.
- 3) With "track changes" disabled, paste the entire CR form (use CTRL-A to select it) into the specification just in front of the clause containing the first piece of changed text. Delete those parts of the specification which are not relevant to the change request.

***** First Modified Section *****

4.5.7.5 Process CS_gsmSSF and procedures

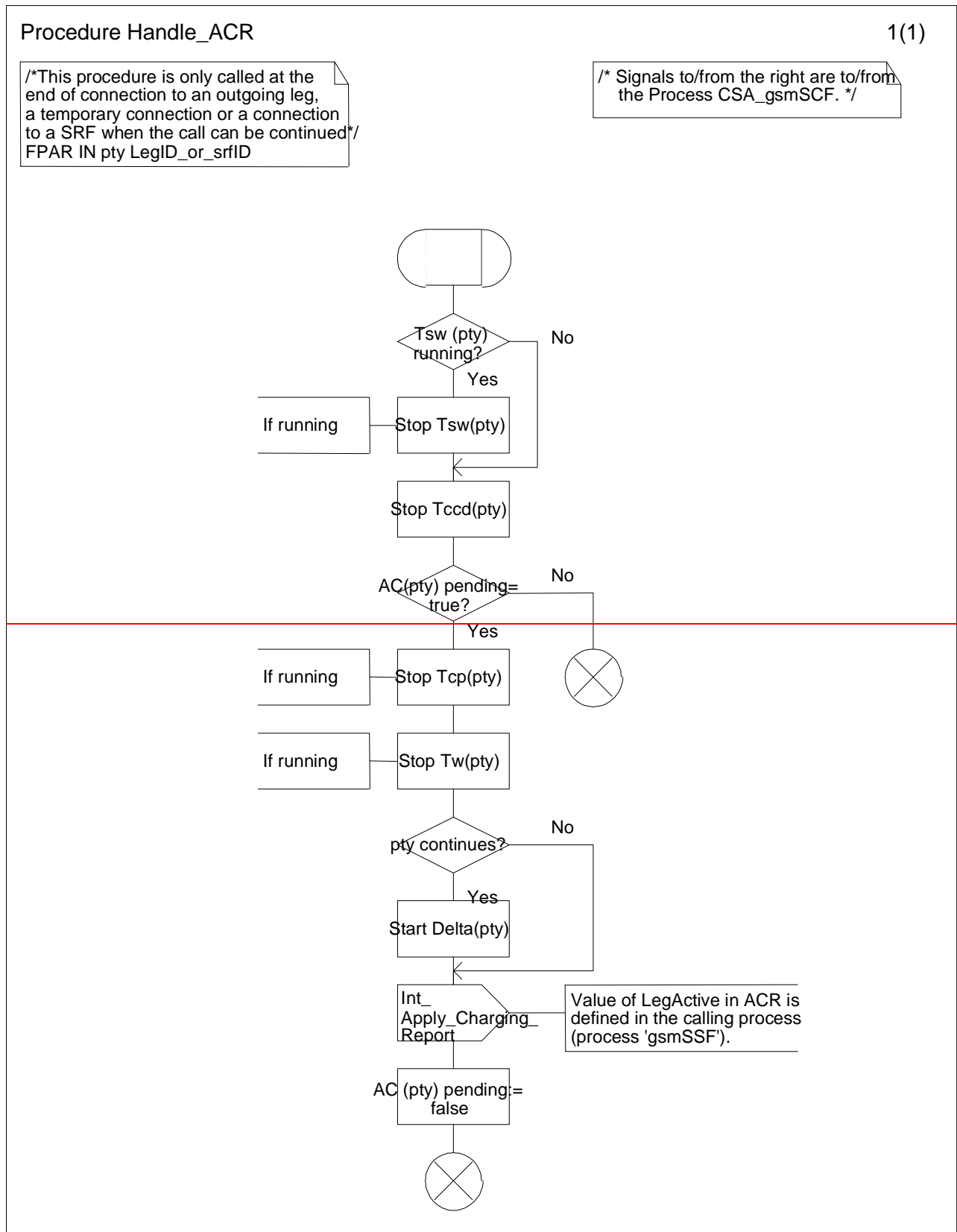


Figure 4.101-1: Procedure Handle_ACR (sheet 1)

Procedure Handle_ACR

1(1)

/*This procedure is only called at the end of connection to an outgoing leg, a temporary connection or a connection to a SRF when the call can be continued*/
FPAR IN pty LegID_or_srfID

/* Signals to/from the right are to/from the Process CSA_gsmSCF. */

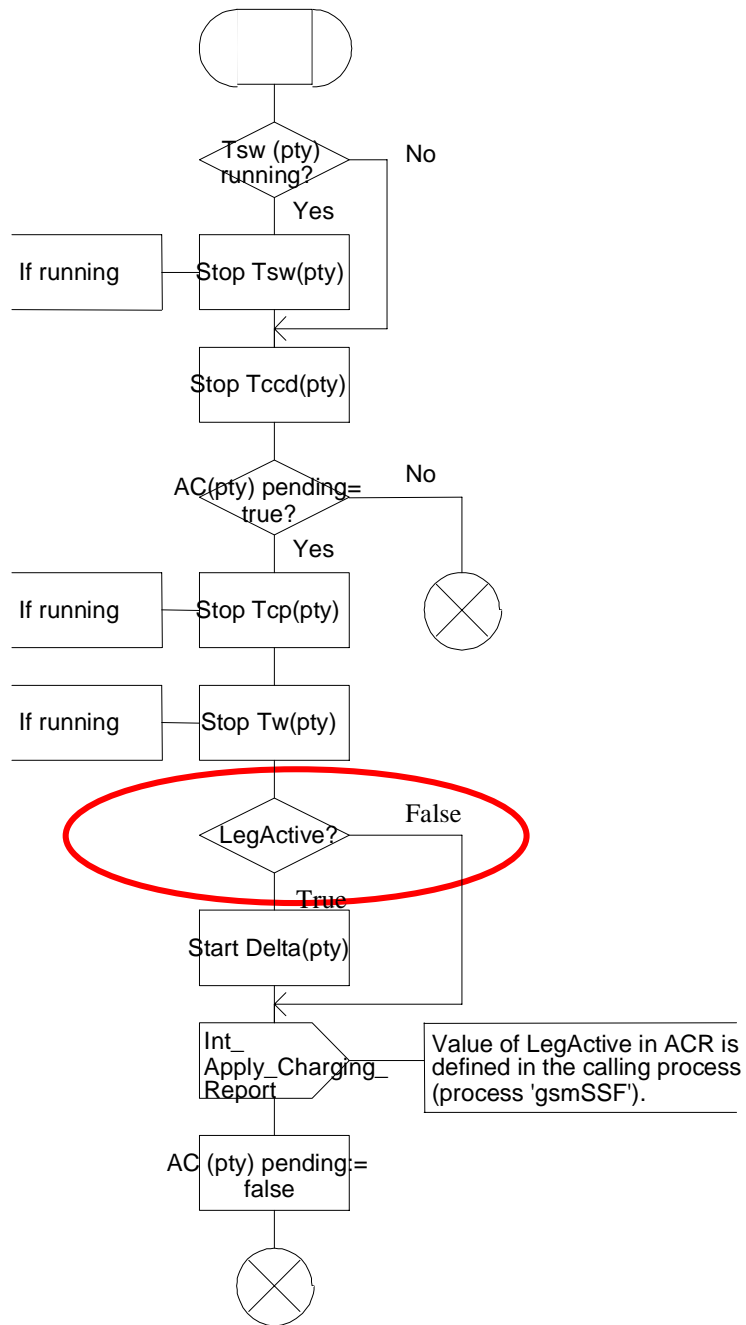


Figure Error! Reference source not found..2-1: Procedure Handle ACR (sheet 1)

***** Next Modified Section *****

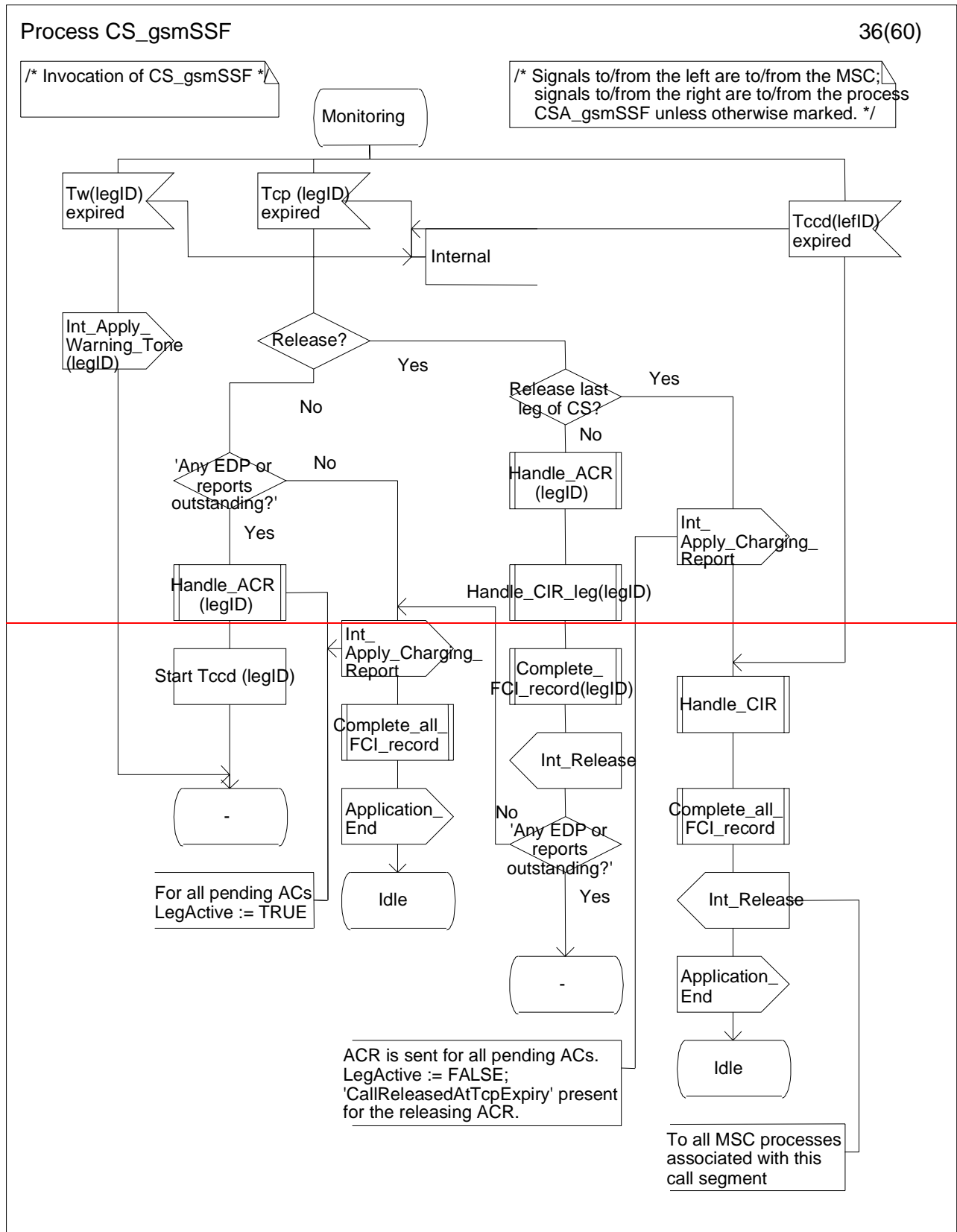


Figure 4.95-36: Process CS_gsmSSF (sheet 36)

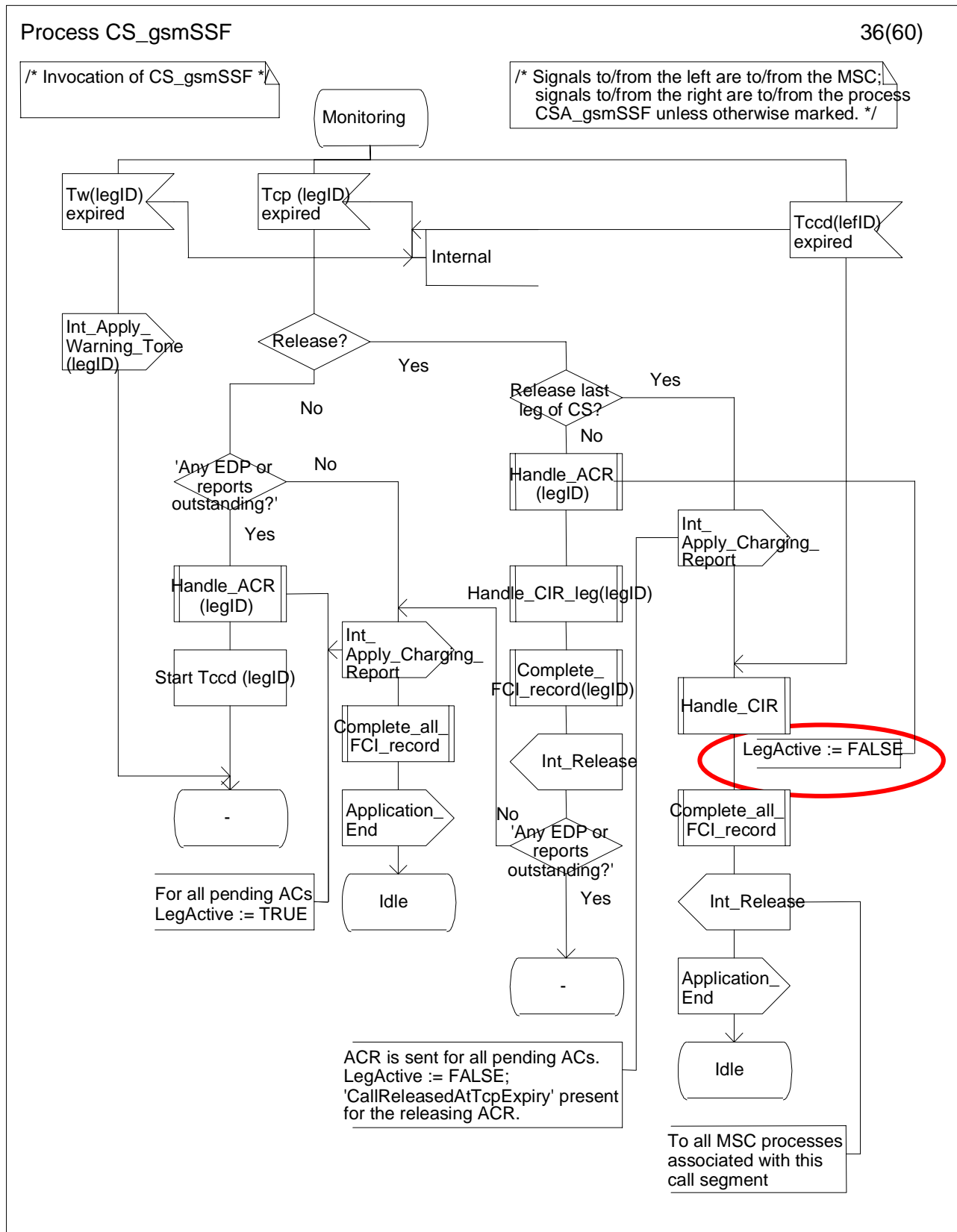


Figure Error! Reference source not found.-3: Process CS_gsmSSF (sheet 3)

**** End of Document ****