

**3GPP TSG CN Plenary Meeting #12  
Stockholm, Sweden, 13<sup>th</sup> - 15<sup>th</sup> June 2001**

**Tdoc NP-010283**

**Source:** TSG CN WG4  
**Title:** CRs on R99 Work Item Camel3  
**Agenda item:** 7.2  
**Document for:** APPROVAL

---

**Introduction:**

This document contains 4 CRs on R99 Work Item "Camel3", that have been agreed by TSG CN WG4, and are forwarded to TSG CN Plenary meeting #12 for approval.

<b>Spec</b>	<b>CR</b>	<b>Rev</b>	<b>Doc-2nd-Level</b>	<b>Phase</b>	<b>Subject</b>	<b>Cat</b>	<b>Ver_C</b>
23.008	036		N4-010744	R99	Supported CAMEL Phases in VLR is temporary	F	3.5.0
23.008	037		N4-010745	Rel-4	Supported CAMEL Phases in VLR is temporary	A	4.0.0
23.018	073		N4-010722	R99	Initialisation of variable to monitor activation of CSI's	F	3.7.0
23.018	074		N4-010723	Rel-4	Initialisation of variable to monitor activation of CSI's	A	4.2.0

CR-Form-v3

## CHANGE REQUEST

23.008 CR 036 rev  Current version: 3.5.0

**Proposed change affects:** (U)SIM  ME/UE  Radio Access Network  Core Network

<b>Title:</b>	Supported CAMEL Phases in VLR is temporary		
<b>Source:</b>	CN4		
<b>Work item code:</b>	Camel3	<b>Date:</b>	14 <sup>th</sup> May 2001
<b>Category:</b>	<b>F (essential correction)</b>	<b>Release:</b>	R99
	<i>Use one of the following categories:</i> <b>F</b> (correction) <b>A</b> (corresponds to a correction in an earlier release) <b>B</b> (Addition of feature), <b>C</b> (Functional modification of feature) <b>D</b> (Editorial modification) Detailed explanations of the above categories can be found in 3GPP TR 21.900.		<i>Use one of the following releases:</i> <b>2</b> (GSM Phase 2) <b>R96</b> (Release 1996) <b>R97</b> (Release 1997) <b>R98</b> (Release 1998) <b>R99</b> (Release 1999) <b>REL-4</b> (Release 4) <b>REL-5</b> (Release 5)

<b>Reason for change:</b>	"Supported CAMEL Phases in VLR" is currently marked as permanent data in the HLR. However, this data can change whenever the subscriber changes VLR.
<b>Summary of change:</b>	"Supported CAMEL Phases in VLR" is changed to temporary data, so that it can be updated when the subscriber changes VLR.
<b>Consequences if not approved:</b>	HLRs will not update the "Supported CAMEL Phases in VLR" when a subscriber updates on a new VLR, as the data is permanent, and clause 3 states: "The type indication indicates whether the subscriber data is temporary (T) or permanent (P) data, where permanent data can be set and modified but by the operator, whereas the temporary data are set and changed automatically by network functions."

<b>Clauses affected:</b>	4
<b>Other specs affected:</b>	<input type="checkbox"/> Other core specifications <input type="checkbox"/> Test specifications <input type="checkbox"/> O&M Specifications
<b>Other comments:</b>	A mirror CR may be required to the Rel-4 version of 3GPP TS 23.008, however this was not available on the 3GPP server at the time of drafting. SGSN number is stated in table 2, clause 4, is already set as T (Temporary).

**\*\*\* Section provided for information \*\*\***

---

## 3 Summary of data stored in location registers

Table 1 gives an overview of data stored in location registers for non-GPRS Network Access Mode, whereas table 2 shows the data stored in the location registers, in the SGSN and in the GGSN for GPRS Network Access Mode. In the tables, M = mandatory means that this parameter is stored for all subscribers with subscription of the Network Access Mode as shown in the table heading and defining the table; and C = conditional means that the parameter is subject to some condition (e.g. subscription of teleservice or other services, reception of optional message or short-lived data). The type indication indicates whether the subscriber data is temporary (T) or permanent (P) data, where permanent data can be set and modified but by the operator, whereas the temporary data are set and changed automatically by network functions.

**\*\*\* Modified Section \*\*\***

---

## 4 Accessing subscriber data

It shall be possible to retrieve or store subscriber data concerning a specific MS from the HLR by use of each of the following references:

- International Mobile Subscriber Identity (IMSI);
- Mobile Station ISDN Number (MSISDN).

It shall be possible to retrieve or store subscriber data concerning a specific MS from the VLR by use of each of the following references:

- International Mobile Subscriber Identity (IMSI);
- Temporary Mobile Subscriber Identity (TMSI).

It shall be possible to retrieve or store subscriber data concerning a specific MS from the SGSN by use of each of the following references:

- International Mobile Subscriber Identity (IMSI);
- Packet Temporary Mobile Subscriber identity (P-TMSI).

It shall be possible to retrieve or store subscriber data concerning a specific MS from the GGSN by use of the following reference:

- International Mobile Subscriber Identity (IMSI).

See clause 3 for explanation of M, C, T and P in table 1 and table 2.

Table 1: Overview of data stored for non-GPRS Network Access Mode

PARAMETER	SUBCLAUSE	HLR	VLR	TYPE
IMSI	2.1.1.1	M	M	P
Network Access Mode	2.1.1.2	M	-	P
International MS ISDN number	2.1.2	M	M	P
multinumbering MSISDNs	2.1.3	C	-	P
Basic MSISDN indicator	2.1.3.1	C	-	P
MSISDN-Alert indicator	2.1.3.2	C	-	P
TMSI	2.1.4	-	C	T
LMSI	2.1.8	C	C	T
Mobile Station Category	2.2.1	M	M	P
LMU Identifier	2.2.2	C	C	P
RAND, SRES and Kc	2.3.1	-	C	T
RAND, XRES, CK, IK and AUTN	2.3.2	M	C	T
Ciphering Key Sequence Number	2.3.3	-	M	T
MSRN	2.4.1	-	C	T
Location Area Identity	2.4.2	-	M	T
VLR number	2.4.5	M	-	T
MSC number	2.4.6	M	C	T
HLR number	2.4.7	-	C	T
Subscription restriction	2.4.10	C	-	P
RSZI lists	2.4.11.1	C	-	P
Zone Code List	2.4.11.2	-	C	P
MSC area restricted flag	2.4.12	M	-	T
LA not allowed flag	2.4.13	-	M	T
ODB-induced barring data	2.4.15.1	C	-	T
Roaming restriction due to unsupported feature	2.4.15.2	M	M	T
Cell Global ID or Service Area ID	2.4.16	-	C	T
LSA Identity	2.4.17.1	C	C	P
LSA Priority	2.4.17.2	C	C	P
LSA Preferential Access Indicator	2.4.17.2A	C	C	P
LSA Active Mode Support Indicator	2.4.17.2B	C	C	P
LSA Only Access Indicator	2.4.17.3	C	C	P
LSA Active Mode Indicator	2.4.17.4	C	C	P
VPLMN Identifier	2.4.17.5	C	-	P
Provision of bearer service	2.5.1	M	M	P
Provision of teleservice	2.5.2	M	M	P
BC allocation	2.5.3	C	-	P
IMSI detached flag	2.7.1	-	C	T
Confirmed by Radio Contact indicator	2.7.4.1	-	M	T
Subscriber Data Confirmed by HLR indicator	2.7.4.2	-	M	T
Location Information Confirmed in HLR indicator	2.7.4.3	-	M	T
Check SS indicator	2.7.4.4	M	-	T
MS purged for non-GPRS flag	2.7.5	M	-	T
MNRR	2.7.7	C	-	T
Subscriber status	2.8.1	C	C	P
Barring of outgoing calls	2.8.2.1	C	C	P
Barring of incoming calls	2.8.2.2	C	-	P
Barring of roaming	2.8.2.3	C	-	P
Barring of premium rate calls	2.8.2.4	C	C	P
Barring of supplementary service management	2.8.2.5	C	C	P
Barring of registration of call forwarding	2.8.2.6	C	-	P
Barring of invocation of call transfer	2.8.2.7	C	C	P
Operator determined barring PLMN-specific data	2.8.3	C	C	P
Notification to CSE flag for ODB	2.8.4	C	-	T
gsmSCF address list for ODB	2.8.5	C	-	P
Handover Number	2.9.1	-	C	T
Messages Waiting Data	2.10.1	C	-	T
Mobile Station Not Reachable Flag	2.10.2	C	M	T
Memory Capacity Exceeded Flag	2.10.3	C	-	T

(continued)

Table 1 (concluded): Overview of data stored for non-GPRS Network Access Mode

PARAMETER	SUBCLAUSE	HLR	VLR	TYPE
Trace Reference	2.11.1	C	C	P
Trace Type	2.11.2	C	C	P
Operations Systems Identity	2.11.3	C	C	P
HLR Trace Type	2.11.4	C	-	P
MAP Error On Trace	2.11.5	C	-	T
Trace Activated in VLR	2.11.6	C	C	T
Foreign Subscriber Registered in VLR	2.11.7	-	C	P
VGCS Group Membership List	2.12.1	C	C	P
VBS Group Membership List	2.12.2	C	C	P
Broadcast Call Initiation Allowed List	2.12.2.1	C	C	P
Originating CAMEL Subscription Information (O-CSI)	2.14.1.1/3.1	C	C	P
Terminating CAMEL Subscription Information (T-CSI)	2.14.1.2	C	-	P
VMSC Terminating CAMEL Subscription Information (VT-CSI)	2.14.1.2/3.2	C	C	P
Location Information/Subscriber state Information	2.14.1.3	C	-	P
USSD CAMEL subscription information(U-CSI)	2.14.1.4	C	-	P
SS invocation notification (SS-CSI)	2.14.1.5/3.2	C	C	P
Translation information flag(TIF-CSI)	2.14.1.6/3.6	C	C	P
Dialled service CAMEL Subscription Information (D-CSI)	2.14.1.10/3.6	C	C	P
USSD General CAMEL service information (UG-CSI)	2.14.2	C	-	P
O-CSI Negotiated CAMEL Capability Handling	2.14.2.1	C		<del>TP</del>
SS-CSI Negotiated CAMEL Capability Handling	2.14.2.1	C		<del>TP</del>
VT-CSI Negotiated CAMEL Capability Handling	2.14.2.1	C		<del>TP</del>
SMS-CSI VLR Negotiated CAMEL Capability Handling	2.14.2.1	C		<del>TP</del>
M-CSI Negotiated CAMEL Capability Handling	2.14.2.1	C		<del>TP</del>
VLR Supported CAMEL Phases	2.14.2.3	C		<del>TP</del>
GsmSCF address for CSI	2.14.2.4	C		P
IST Alert Timer	2.15.1	C	C	P
Privacy Exception List	2.16.1.1	C	C	P
GMLC Numbers	2.16.1.2	C	C	P
MO-LR List	2.16.1.3	C	C	P
Age Indicator	2.17.1	C	C	T
CS Allocation/Retention priority	2.18.1	C	C	P

Table 2: Overview of data used for GPRS Network Access Mode

PARAMETER	Subclause	HLR	VLR	SGSN	GGSN	TYPE
IMSI	2.1.1.1	M	M	M	M	P
Network Access Mode	2.1.1.2	M	-	C note1	-	P
International MS ISDN number	2.1.2	M	M	M	-	T
multinumbering MSISDNs	2.1.3	C	-	-	-	T
Basic MSISDN indicator	2.1.3.1	C	-	-	-	T
MSISDN-Alert indicator	2.1.3.2	C	-	-	-	T
P-TMSI	2.1.5	-	-	C	-	T
TLLI	2.1.6	-	-	C	-	T
Random TLLI	2.1.7	-	-	C	-	T
IMEI	2.1.9	-	-	C	-	T
RAND/SRES and Kc	2.3.1	-	-	C	-	T
RAND, XRES, CK, IK, AUTN	2.3.2	M	-	C	-	T
Ciphering Key Sequence Number	2.3.3	-	-	M	-	T
Selected Ciphering Algorithm	2.3.5	-	-	M	-	T
Current Kc	2.3.6	-	-	M	-	T
P-TMSI Signature	2.3.7	-	-	C	-	T
Routing Area Identity	2.4.3	-	-	M	-	T
VLR Number	2.4.5	M	-	C note2	-	T
SGSN Number	2.4.8.1	M	C note2	-	-	T
GGSN Number	2.4.8.2	M	-	-	-	P
RSZI Lists	2.4.11.1	C	-	-	-	P
Zone Code List	2.4.11.2	-	-	C	-	P
LA not allowed flag	2.4.13	-	-	M	-	T
SGSN area restricted flag	2.4.14	M	-	-	-	T
Roaming Restriction in the SGSN ..	2.4.15.2	M	-	M	-	T
Cell Global ID or Service Area ID	2.4.16	-	-	C	-	T
LSA Identity	2.4.17.1	C	C	C	-	P
LSA Priority	2.4.17.2	C	C	C	-	P
LSA Preferential Access Indicator	2.4.17.2A	C	C	C	-	P
LSA Active Mode Support Indicator	2.4.17.2B	C	C	C	-	P
LSA Only Access Indicator	2.4.17.3	C	C	C	-	P
LSA Active Mode Indicator	2.4.17.4	C	C	C	-	P
VPLMN Identifier	2.4.17.5	C	-	-	-	P
Provision of teleservice	2.5.2	C	-	C	-	P
Transfer of SM option	2.5.4	M	-	-	-	P
MNRG	2.7.2	M	-	M	M	T
MM State	2.7.3	-	-	M	-	T
Subscriber Data Confirmed by HLR Indicator	2.7.4.2	-	-	M	-	T
Location Info Confirmed by HLR Indicator	2.7.4.3	-	-	M	-	T
MS purged for GPRS flag	2.7.6	M	-	-	-	T
MNRR	2.7.7	C	-	-	-	T
Subscriber Status	2.8.1	C	-	C	-	P
Barring of outgoing calls	2.8.2.1	C	-	-	-	P
Barring of roaming	2.8.2.3	C	-	C	-	P
ODB PLMN-specific data	2.8.3	C	-	C	-	P
Notification to CSE flag for ODB	2.8.4	C	-	-	-	T
gsmSCF address list for ODB	2.8.5	C	-	-	-	P
Trace Activated in SGSN	2.11.7	C	-	C	-	P
PDP Type	2.13.1	C	-	C	M	P
PDP Address	2.13.2	C	-	C	M	P
NSAPI	2.13.3	-	-	C	C	T
PDP State	2.13.4	-	-	C	-	T
New SGSN Address	2.13.5	-	-	C	-	T
Access Point Name	2.13.6	C	-	C	C	P/T
GGSN Address in Use	2.13.7	-	-	C	-	T
VPLMN Address Allowed	2.13.8	C	-	C	-	P
Dynamic Address	2.13.9	-	-	-	C	T
SGSN Address	2.13.10	-	-	-	M	T
GGSN-list	2.13.11	M	-	-	-	T

(continued)

**Table 2 (concluded): Overview of data used for GPRS Network Access Mode**

PARAMETER	Subclause	HLR	VLR	SGSN	GGSN	TYPE
Quality of Service Subscribed	2.13.12	C	-	C	-	P
Quality of Service Requested	2.13.13	-	-	C	-	T
Quality of Service Negotiated	2.13.14	-	-	C	M	T
SND	2.13.15	-	-	C	C	T
SNU	2.13.16	-	-	C	C	T
DRX Parameters	2.13.17	-	-	M	-	T
Compression	2.13.18	-	-	C	-	T
NGAF	2.13.19	-	-	C note2	-	T
Classmark	2.13.20	-	-	M	-	T
TID	2.13.21	-	-	C	C	T
Radio Priority	2.13.22	-	-	C	-	T
Radio Priority SMS	2.13.23	-	-	C	-	T
PDP Context Identifier	2.13.24	C	-	C	-	T
PDP Context Charging Characteristics	2.13.25	C	-	C	C	P
Short Message Service CAMEL Subscription Information (SMS-CSI)	2.14.4.1/1.8	C	-	C	-	P
GPRS CAMEL Subscription Information (GPRS-CSI)	2.14.4.2/1.9	C	-	C	-	C
SMS-CSI SGSN Negotiated CAMEL Capability Handling	2.14.2.1	C	-	-	-	<del>TP</del>
GPRS-CSI Negotiated CAMEL Capability Handling	2.14.2.1	C	-	-	-	<del>TP</del>
SGSN Supported CAMEL Phases	2.14.2.3	C	-	-	-	<del>TP</del>
GsmSCF address for CSI	2.14.2.4	C	-	-	-	P
Age Indicator	2.16.1	C	-	C	-	T
Subscribed Charging Characteristics	2.19.1	C	-	C	C	P

The HLR column indicates only GPRS related use, i.e. if the HLR uses a parameter in non-GPRS Network Access Mode but not in GPRS Network Access Mode, it is not mentioned in this table 2.

note1: This parameter is relevant in the SGSN only when the Gs interface is installed.

note2: The VLR column is applicable if Gs interface is installed. It only indicates GPRS related data to be stored and is only relevant to GPRS subscribers registered in VLR.

For special condition of storage see in clause 2.  
See clause 3 for explanation of M, C, T and P in table 2.

**\*\*\* End of document \*\*\***

CR-Form-v3

## CHANGE REQUEST

**23.008 CR 037**

rev

Current version: **4.0.0**

**Proposed change affects:** (U)SIM  ME/UE  Radio Access Network  Core Network

<b>Title:</b>	Supported CAMEL Phases in VLR is temporary		
<b>Source:</b>	CN4		
<b>Work item code:</b>	CAMEL3	<b>Date:</b>	3 <sup>rd</sup> May 2001
<b>Category:</b>	<b>A</b>	<b>Release:</b>	REL-4
	Use <u>one</u> of the following categories: <b>F</b> (correction) <b>A</b> (corresponds to a correction in an earlier release) <b>B</b> (Addition of feature), <b>C</b> (Functional modification of feature) <b>D</b> (Editorial modification) Detailed explanations of the above categories can be found in 3GPP TR 21.900.		Use <u>one</u> of the following releases: 2 (GSM Phase 2) R96 (Release 1996) R97 (Release 1997) R98 (Release 1998) R99 (Release 1999) REL-4 (Release 4) REL-5 (Release 5)

<b>Reason for change:</b>	"Supported CAMEL Phases in VLR" is currently marked as permanent data in the HLR. However, this data can change whenever the subscriber changes VLR.
<b>Summary of change:</b>	"Supported CAMEL Phases in VLR" is changed to temporary data, so that it can be updated when the subscriber changes VLR.
<b>Consequences if not approved:</b>	HLRs will not update the "Supported CAMEL Phases in VLR" when a subscriber updates on a new VLR, as the data is permanent, and clause 3 states: "The type indication indicates whether the subscriber data is temporary (T) or permanent (P) data, where permanent data can be set and modified but by the operator, whereas the temporary data are set and changed automatically by network functions."

<b>Clauses affected:</b>	4	
<b>Other specs affected:</b>	<input checked="" type="checkbox"/> Other core specifications <input type="checkbox"/> Test specifications <input type="checkbox"/> O&M Specifications	23.008 for R99 (in N2-010307)
<b>Other comments:</b>		



**\*\*\* Section provided for information \*\*\***

---

## 3 Summary of data stored in location registers

Table 1 gives an overview of data stored in location registers for non-GPRS Network Access Mode, whereas table 2 shows the data stored in the location registers, in the SGSN and in the GGSN for GPRS Network Access Mode. In the tables, M = mandatory means that this parameter is stored for all subscribers with subscription of the Network Access Mode as shown in the table heading and defining the table; and C = conditional means that the parameter is subject to some condition (e.g. subscription of teleservice or other services, reception of optional message or short-lived data). The type indication indicates whether the subscriber data is temporary (T) or permanent (P) data, where permanent data can be set and modified but by the operator, whereas the temporary data are set and changed automatically by network functions.

**\*\*\* Modified Section \*\*\***

---

## 4 Accessing subscriber data

It shall be possible to retrieve or store subscriber data concerning a specific MS from the HLR by use of each of the following references:

- International Mobile Subscriber Identity (IMSI);
- Mobile Station ISDN Number (MSISDN).

It shall be possible to retrieve or store subscriber data concerning a specific MS from the VLR by use of each of the following references:

- International Mobile Subscriber Identity (IMSI);
- Temporary Mobile Subscriber Identity (TMSI).

It shall be possible to retrieve or store subscriber data concerning a specific MS from the SGSN by use of each of the following references:

- International Mobile Subscriber Identity (IMSI);
- Packet Temporary Mobile Subscriber identity (P-TMSI).

It shall be possible to retrieve or store subscriber data concerning a specific MS from the GGSN by use of the following reference:

- International Mobile Subscriber Identity (IMSI).

See clause 3 for explanation of M, C, T and P in table 1 and table 2.

Table 1: Overview of data stored for non-GPRS Network Access Mode

PARAMETER	SUBCLAUSE	HLR	VLR	TYPE
IMSI	2.1.1.1	M	M	P
Network Access Mode	2.1.1.2	M	-	P
International MS ISDN number	2.1.2	M	M	P
multinumbering MSISDNs	2.1.3	C	-	P
Basic MSISDN indicator	2.1.3.1	C	-	P
MSISDN-Alert indicator	2.1.3.2	C	-	P
TMSI	2.1.4	-	C	T
LMSI	2.1.8	C	C	T
Mobile Station Category	2.2.1	M	M	P
LMU Identifier	2.2.2	C	C	P
RAND, SRES and Kc	2.3.1	-	C	T
RAND, XRES, CK, IK and AUTN	2.3.2	M	C	T
Ciphering Key Sequence Number	2.3.3	-	M	T
MSRN	2.4.1	-	C	T
Location Area Identity	2.4.2	-	M	T
VLR number	2.4.5	M	-	T
MSC number	2.4.6	M	C	T
HLR number	2.4.7	-	C	T
Subscription restriction	2.4.10	C	-	P
RSZI lists	2.4.11.1	C	-	P
Zone Code List	2.4.11.2	-	C	P
MSC area restricted flag	2.4.12	M	-	T
LA not allowed flag	2.4.13	-	M	T
ODB-induced barring data	2.4.15.1	C	-	T
Roaming restriction due to unsupported feature	2.4.15.2	M	M	T
Cell Global ID or Service Area ID	2.4.16	-	C	T
LSA Identity	2.4.17.1	C	C	P
LSA Priority	2.4.17.2	C	C	P
LSA Preferential Access Indicator	2.4.17.2A	C	C	P
LSA Active Mode Support Indicator	2.4.17.2B	C	C	P
LSA Only Access Indicator	2.4.17.3	C	C	P
LSA Active Mode Indicator	2.4.17.4	C	C	P
VPLMN Identifier	2.4.17.5	C	-	P
Provision of bearer service	2.5.1	M	M	P
Provision of teleservice	2.5.2	M	M	P
BC allocation	2.5.3	C	-	P
IMSI detached flag	2.7.1	-	C	T
Confirmed by Radio Contact indicator	2.7.4.1	-	M	T
Subscriber Data Confirmed by HLR indicator	2.7.4.2	-	M	T
Location Information Confirmed in HLR indicator	2.7.4.3	-	M	T
Check SS indicator	2.7.4.4	M	-	T
MS purged for non-GPRS flag	2.7.5	M	-	T
MNRR	2.7.7	C	-	T
Subscriber status	2.8.1	C	C	P
Barring of outgoing calls	2.8.2.1	C	C	P
Barring of incoming calls	2.8.2.2	C	-	P
Barring of roaming	2.8.2.3	C	-	P
Barring of premium rate calls	2.8.2.4	C	C	P
Barring of supplementary service management	2.8.2.5	C	C	P
Barring of registration of call forwarding	2.8.2.6	C	-	P
Barring of invocation of call transfer	2.8.2.7	C	C	P
Operator determined barring PLMN-specific data	2.8.3	C	C	P
Notification to CSE flag for ODB	2.8.4	C	-	T
gsmSCF address list for ODB	2.8.5	C	-	P
Handover Number	2.9.1	-	C	T
Messages Waiting Data	2.10.1	C	-	T
Mobile Station Not Reachable Flag	2.10.2	C	M	T
Memory Capacity Exceeded Flag	2.10.3	C	-	T
Trace Reference	2.11.1	C	C	P
Trace Type	2.11.2	C	C	P
Operations Systems Identity	2.11.3	C	C	P
HLR Trace Type	2.11.4	C	-	P
MAP Error On Trace	2.11.5	C	-	T
Trace Activated in VLR	2.11.6	C	C	T
Foreign Subscriber Registered in VLR	2.11.7	-	C	P

PARAMETER	SUBCLAUSE	HLR	VLR	TYPE
VGCS Group Membership List	2.12.1	C	C	P
VBS Group Membership List	2.12.2	C	C	P
Broadcast Call Initiation Allowed List	2.12.2.1	C	C	P
Originating CAMEL Subscription Information (O-CSI)	2.14.1.1/3.1	C	C	P
Terminating CAMEL Subscription Information (T-CSI)	2.14.1.2	C	-	P
VMSC Terminating CAMEL Subscription Information (VT-CSI)	2.14.1.2/3.2	C	C	P
Location Information/Subscriber state Information	2.14.1.3	C	-	P
USSD CAMEL subscription information(U-CSI)	2.14.1.4	C	-	P
SS invocation notification (SS-CSI)	2.14.1.5/3.2	C	C	P
Translation information flag(TIF-CSI)	2.14.1.6/3.6	C	C	P
Dialled service CAMEL Subscription Information (D-CSI)	2.14.1.10/3.6	C	C	P
USSD General CAMEL service information (UG-CSI)	2.14.2	C	-	P
O-CSI Negotiated CAMEL Capability Handling	2.14.2.1	C		<del>TP</del>
SS-CSI Negotiated CAMEL Capability Handling	2.14.2.1	C		<del>TP</del>
VT-CSI Negotiated CAMEL Capability Handling	2.14.2.1	C		<del>TP</del>
SMS-CSI VLR Negotiated CAMEL Capability Handling	2.14.2.1	C		<del>TP</del>
M-CSI Negotiated CAMEL Capability Handling	2.14.2.1	C		<del>TP</del>
VLR Supported CAMEL Phases	2.14.2.3	C		<del>TP</del>
GsmSCF address for CSI	2.14.2.4	C		P
IST Alert Timer	2.15.1	C	C	P
Privacy Exception List	2.16.1.1	C	C	P
GMLC Numbers	2.16.1.2	C	C	P
MO-LR List	2.16.1.3	C	C	P
Age Indicator	2.17.1	C	C	T
CS Allocation/Retention priority	2.18.1	C	C	P

Table 2: Overview of data used for GPRS Network Access Mode

PARAMETER	Subclause	HLR	VLR	SGSN	GGSN	TYPE
IMSI	2.1.1.1	M	M	M	M	P
Network Access Mode	2.1.1.2	M	-	C note1	-	P
International MS ISDN number	2.1.2	M	M	M	-	T
multinumbering MSISDNs	2.1.3	C	-	-	-	T
Basic MSISDN indicator	2.1.3.1	C	-	-	-	T
MSISDN-Alert indicator	2.1.3.2	C	-	-	-	T
P-TMSI	2.1.5	-	-	C	-	T
TLLI	2.1.6	-	-	C	-	T
Random TLLI	2.1.7	-	-	C	-	T
IMEI	2.1.9	-	-	C	-	T
RAND/SRES and Kc	2.3.1	-	-	C	-	T
RAND, XRES, CK, IK, AUTN	2.3.2	M	-	C	-	T
Ciphering Key Sequence Number	2.3.3	-	-	M	-	T
Selected Ciphering Algorithm	2.3.5	-	-	M	-	T
Current Kc	2.3.6	-	-	M	-	T
P-TMSI Signature	2.3.7	-	-	C	-	T
Routing Area Identity	2.4.3	-	-	M	-	T
VLR Number	2.4.5	M	-	C note2	-	T
SGSN Number	2.4.8.1	M	C note2	-	-	T
GGSN Number	2.4.8.2	M	-	-	-	P
RSZI Lists	2.4.11.1	C	-	-	-	P
Zone Code List	2.4.11.2	-	-	C	-	P
LA not allowed flag	2.4.13	-	-	M	-	T
SGSN area restricted flag	2.4.14	M	-	-	-	T
Roaming Restriction in the SGSN ..	2.4.15.2	M	-	M	-	T
Cell Global ID or Service Area ID	2.4.16	-	-	C	-	T
LSA Identity	2.4.17.1	C	C	C	-	P
LSA Priority	2.4.17.2	C	C	C	-	P
LSA Preferential Access Indicator	2.4.17.2A	C	C	C	-	P
LSA Active Mode Support Indicator	2.4.17.2B	C	C	C	-	P
LSA Only Access Indicator	2.4.17.3	C	C	C	-	P
LSA Active Mode Indicator	2.4.17.4	C	C	C	-	P
VPLMN Identifier	2.4.17.5	C	-	-	-	P
Provision of teleservice	2.5.2	C	-	C	-	P
Transfer of SM option	2.5.4	M	-	-	-	P
MNRG	2.7.2	M	-	M	M	T
MM State	2.7.3	-	-	M	-	T
Subscriber Data Confirmed by HLR Indicator	2.7.4.2	-	-	M	-	T
Location Info Confirmed by HLR Indicator	2.7.4.3	-	-	M	-	T
MS purged for GPRS flag	2.7.6	M	-	-	-	T
MNRR	2.7.7	C	-	-	-	T
Subscriber Status	2.8.1	C	-	C	-	P
Barring of outgoing calls	2.8.2.1	C	-	-	-	P
Barring of roaming	2.8.2.3	C	-	C	-	P
Barring of Packet Oriented Services	2.8.2.8	C	-	C	-	P
ODB PLMN-specific data	2.8.3	C	-	C	-	P
Notification to CSE flag for ODB	2.8.4	C	-	-	-	T
gsmSCF address list for ODB	2.8.5	C	-	-	-	P
Trace Activated in SGSN	2.11.7	C	-	C	-	P
PDP Type	2.13.1	C	-	C	M	P
PDP Address	2.13.2	C	-	C	M	P
NSAPI	2.13.3	-	-	C	C	T
PDP State	2.13.4	-	-	C	-	T
New SGSN Address	2.13.5	-	-	C	-	T
Access Point Name	2.13.6	C	-	C	C	P/T
GGSN Address in Use	2.13.7	-	-	C	-	T
VPLMN Address Allowed	2.13.8	C	-	C	-	P
Dynamic Address	2.13.9	-	-	-	C	T
SGSN Address	2.13.10	-	-	-	M	T
GGSN-list	2.13.11	M	-	-	-	T
Quality of Service Subscribed	2.13.12	C	-	C	-	P
Quality of Service Requested	2.13.13	-	-	C	-	T
Quality of Service Negotiated	2.13.14	-	-	C	M	T
SND	2.13.15	-	-	C	C	T
SNU	2.13.16	-	-	C	C	T

PARAMETER	Subclause	HLR	VLR	SGSN	GGSN	TYPE
DRX Parameters	2.13.17	-	-	M	-	T
Compression	2.13.18	-	-	C	-	T
NGAF	2.13.19	-	-	C note2	-	T
Classmark	2.13.20	-	-	M	-	T
TID	2.13.21	-	-	C	C	T
Radio Priority	2.13.22	-	-	C	-	T
Radio Priority SMS	2.13.23	-	-	C	-	T
PDP Context Identifier	2.13.24	C	-	C	-	T
PDP Context Charging Characteristics	2.13.25	C	-	C	C	P
Short Message Service CAMEL Subscription Information (SMS-CSI)	2.14.4.1/1.8	C	-	C	-	P
GPRS CAMEL Subscription Information (GPRS-CSI)	2.14.4.2/1.9	C	-	C	-	C
SMS-CSI SGSN Negotiated CAMEL Capability Handling	2.14.2.1	C	-	-	-	<del>IP</del>
GPRS-CSI Negotiated CAMEL Capability Handling	2.14.2.1	C	-	-	-	<del>IP</del>
SGSN Supported CAMEL Phases	2.14.2.3	C	-	-	-	<del>IP</del>
GsmSCF address for CSI	2.14.2.4	C	-	-	-	P
Age Indicator	2.16.1	C	-	C	-	T
Subscribed Charging Characteristics	2.19.1	C	-	C	C	P
Privacy Exception List	2.16.1.1	C	-	C	-	P
GMLC Numbers	2.16.1.2	C	-	C	-	P
MO-LR List	2.16.1.3	C	-	C	-	P

The HLR column indicates only GPRS related use, i.e. if the HLR uses a parameter in non-GPRS Network Access Mode but not in GPRS Network Access Mode, it is not mentioned in this table 2.

Note 1: This parameter is relevant in the SGSN only when the Gs interface is installed.

Note 2: The VLR column is applicable if Gs interface is installed. It only indicates GPRS related data to be stored and is only relevant to GPRS subscribers registered in VLR.

For special condition of storage see in clause 2. See clause 3 for explanation of M, C, T and P in table 2.

**\*\*\*\* End of document \*\*\*\***

CR-Form-v3

## CHANGE REQUEST

⌘ **23.018 CR 073** ⌘ rev **-** ⌘ Current version: **3.7.0** ⌘

For **HELP** on using this form, see bottom of this page or look at the pop-up text over the ⌘ symbols.

**Proposed change affects:** ⌘ (U)SIM  ME/UE  Radio Access Network  Core Network

<b>Title:</b>	⌘ Initialisation of variable to monitor activation of CSI's.		
<b>Source:</b>	⌘ CN4		
<b>Work item code:</b>	⌘ CAMEL 3	<b>Date:</b>	⌘ 15 May 2001
<b>Category:</b>	⌘ <b>F</b> Essential Correction	<b>Release:</b>	⌘ R99
	Use <u>one</u> of the following categories: <b>F</b> (correction) <b>A</b> (corresponds to a correction in an earlier release) <b>B</b> (Addition of feature), <b>C</b> (Functional modification of feature) <b>D</b> (Editorial modification) Detailed explanations of the above categories can be found in 3GPP TR 21.900.		Use <u>one</u> of the following releases: 2 (GSM Phase 2) R96 (Release 1996) R97 (Release 1997) R98 (Release 1998) R99 (Release 1999) REL-4 (Release 4) REL-5 (Release 5)

<b>Reason for change:</b>	⌘ In CAMEL Phase 2, the MSC sends the VLR a second SIFOC if the call was subject to CAMEL invocation based on O-CSI. This allows the VLR to check the conditional outgoing call barrings against the destination routing address provided by the gsmSCF.  In CAMEL Phase 3, the handling was enhanced to deal with D-CSI and N-CSI as well. The MSC should send the VLR a second SIFOC if the call was subject to <b>at least one</b> of O-CSI, D-CSI and N-CSI. However, following through the SDLs (Procedure CAMEL_MO_Dialled_Services), the MSC will send the second SIFOC regardless of whether there was any CAMEL invocation for the call.
<b>Summary of change:</b>	⌘ Introduction of a new boolean variable CAMEL_Invocation. The variable is checked to determine whether the second SIFOC is sent.
<b>Consequences if not approved:</b>	⌘ In a CAMEL 3 VPLMN, any MO call that is not subject to a CAMEL invocation will fail.

<b>Clauses affected:</b>	⌘ 7.1.1	
<b>Other specs affected:</b>	⌘ <input checked="" type="checkbox"/> Other core specifications <input type="checkbox"/> Test specifications <input type="checkbox"/> O&M Specifications	⌘ 23.078-292 (R99) – N2-010308 23.078-293 (REL-4) – N2-010309 23.018-??? (REL-4) – N4-01????
<b>Other comments:</b>	⌘	

### **How to create CRs using this form:**

Comprehensive information and tips about how to create CRs can be found at: [http://www.3gpp.org/3G\\_Specs/CRs.htm](http://www.3gpp.org/3G_Specs/CRs.htm). Below is a brief summary:

- 1) Fill out the above form. The symbols above marked ⌘ contain pop-up help information about the field that they are closest to.
- 2) Obtain the latest version for the release of the specification to which the change is proposed. Use the MS Word "revision marks" feature (also known as "track changes") when making the changes. All 3GPP specifications can be downloaded from the 3GPP server under <ftp://www.3gpp.org/specs/> For the latest version, look for the directory name with the latest date e.g. 2000-09 contains the specifications resulting from the September 2000 TSG meetings.
- 3) With "track changes" disabled, paste the entire CR form (use CTRL-A to select it) into the specification just in front of the clause containing the first piece of changed text. Delete those parts of the specification which are not relevant to the change request.

## 7.1 MO call

### 7.1.1 Functional requirements of serving MSC

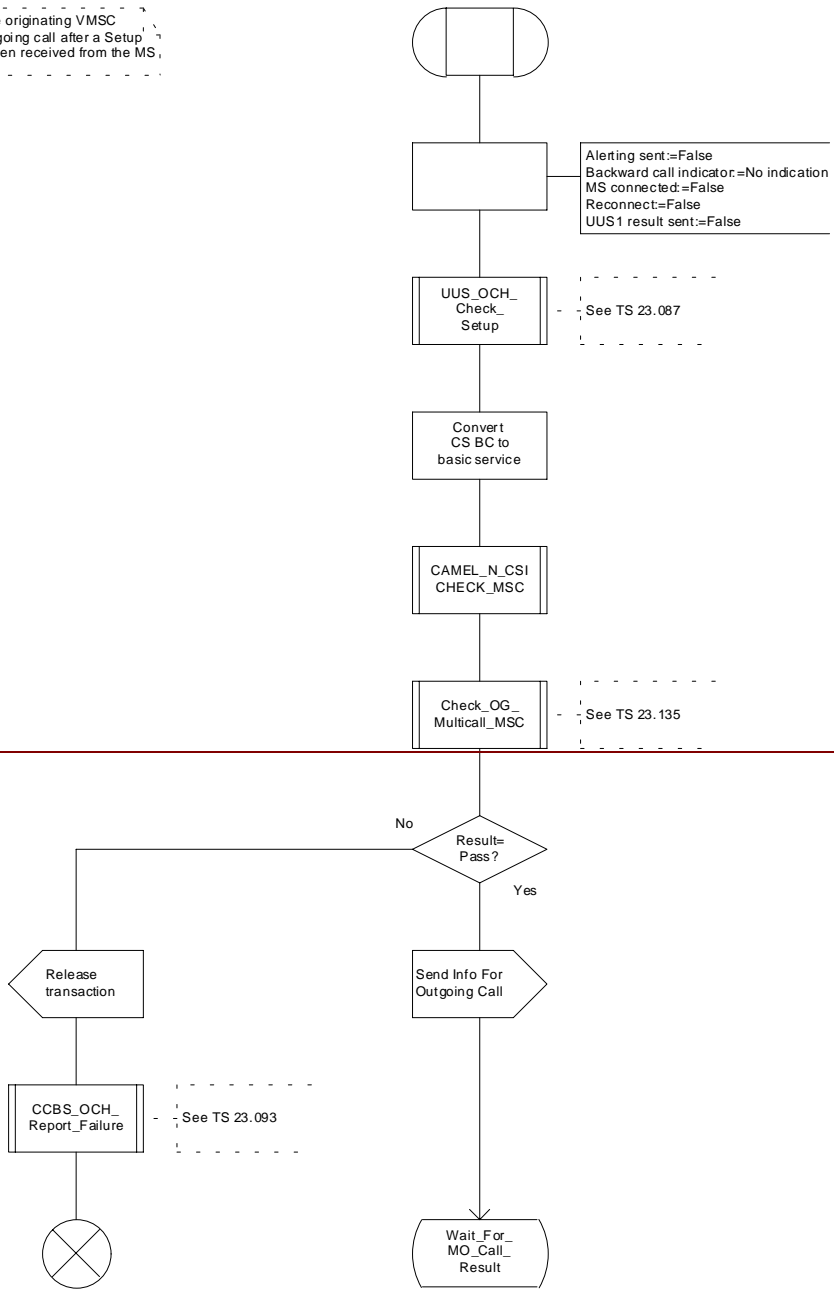
...



### Procedure OG\_Call\_Setup\_MSC

OCS\_MSC1(9)

Procedure in the originating VMSC to set up an outgoing call after a Setup message has been received from the MS.





CR-Form-v3

## CHANGE REQUEST

⌘ **23.018 CR 074** ⌘ rev **-** ⌘ Current version: **4.2.0** ⌘

For **HELP** on using this form, see bottom of this page or look at the pop-up text over the ⌘ symbols.

**Proposed change affects:** ⌘ (U)SIM  ME/UE  Radio Access Network  Core Network

<b>Title:</b>	⌘ Initialisation of variable to monitor activation of CSI's		
<b>Source:</b>	⌘ CN4		
<b>Work item code:</b>	⌘ Camel3	<b>Date:</b>	⌘ 15 May 2001
<b>Category:</b>	⌘ <b>A</b>	<b>Release:</b>	⌘ Rel-4
	<i>Use <u>one</u> of the following categories:</i> <b>F</b> (correction) <b>A</b> (corresponds to a correction in an earlier release) <b>B</b> (Addition of feature), <b>C</b> (Functional modification of feature) <b>D</b> (Editorial modification) Detailed explanations of the above categories can be found in 3GPP TR 21.900.		<i>Use <u>one</u> of the following releases:</i> <b>2</b> (GSM Phase 2) <b>R96</b> (Release 1996) <b>R97</b> (Release 1997) <b>R98</b> (Release 1998) <b>R99</b> (Release 1999) <b>REL-4</b> (Release 4) <b>REL-5</b> (Release 5)

<b>Reason for change:</b>	⌘ In CAMEL Phase 2, the MSC sends the VLR a second SIFOC if the call was subject to CAMEL invocation based on O-CSI. This allows the VLR to check the conditional outgoing call barrings against the destination routing address provided by the gsmSCF.  In CAMEL Phase 3, the handling was enhanced to deal with D-CSI and N-CSI as well. The MSC should send the VLR a second SIFOC if the call was subject to <b>at least one</b> of O-CSI, D-CSI and N-CSI. However, following through the SDLs (Procedure CAMEL_MO_Dialled_Services), the MSC will send the second SIFOC regardless of whether there was any CAMEL invocation for the call.
<b>Summary of change:</b>	⌘ Introduction of a new boolean variable CAMEL_Invocation. The variable is checked to determine whether the second SIFOC is sent.
<b>Consequences if not approved:</b>	⌘ In a CAMEL 3 VPLMN, any MO call that is not subject to a CAMEL invocation will fail.

<b>Clauses affected:</b>	⌘ 7.1.1	
<b>Other specs affected:</b>	⌘ <input checked="" type="checkbox"/> Other core specifications <input type="checkbox"/> Test specifications <input type="checkbox"/> O&M Specifications	⌘ 23.078-292 (R99) – N2-010308 23.078-293 (REL-4) – N2-010309 23.018-??? (R99) – N4-01????
<b>Other comments:</b>	⌘	

### **How to create CRs using this form:**

Comprehensive information and tips about how to create CRs can be found at: [http://www.3gpp.org/3G\\_Specs/CRs.htm](http://www.3gpp.org/3G_Specs/CRs.htm). Below is a brief summary:

- 1) Fill out the above form. The symbols above marked ⌘ contain pop-up help information about the field that they are closest to.
- 2) Obtain the latest version for the release of the specification to which the change is proposed. Use the MS Word "revision marks" feature (also known as "track changes") when making the changes. All 3GPP specifications can be downloaded from the 3GPP server under <ftp://www.3gpp.org/specs/> For the latest version, look for the directory name with the latest date e.g. 2000-09 contains the specifications resulting from the September 2000 TSG meetings.
- 3) With "track changes" disabled, paste the entire CR form (use CTRL-A to select it) into the specification just in front of the clause containing the first piece of changed text. Delete those parts of the specification which are not relevant to the change request.

## 7.1 MO call

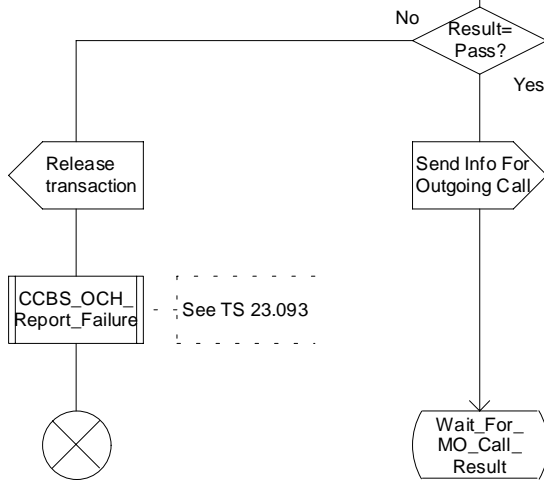
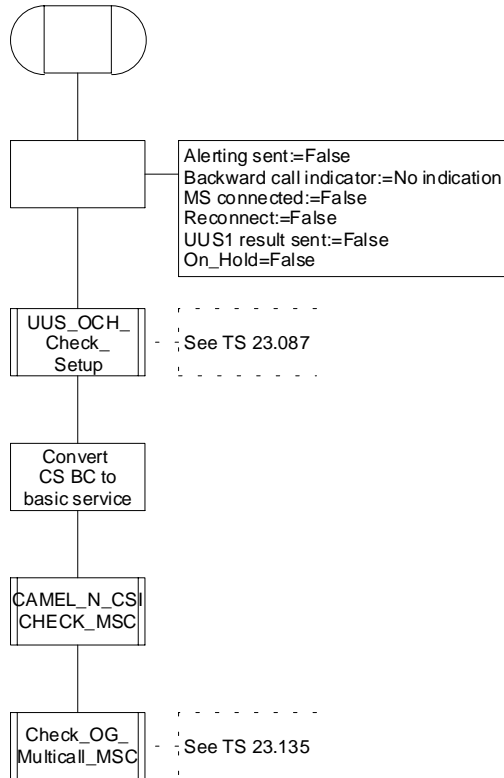
### 7.1.1 Functional requirements of serving MSC

...

### Procedure OG\_Call\_Setup\_MSC

OCS\_MSC1(11)

Procedure in the originating VMSC to set up an outgoing call after a Setup message has been received from the MS



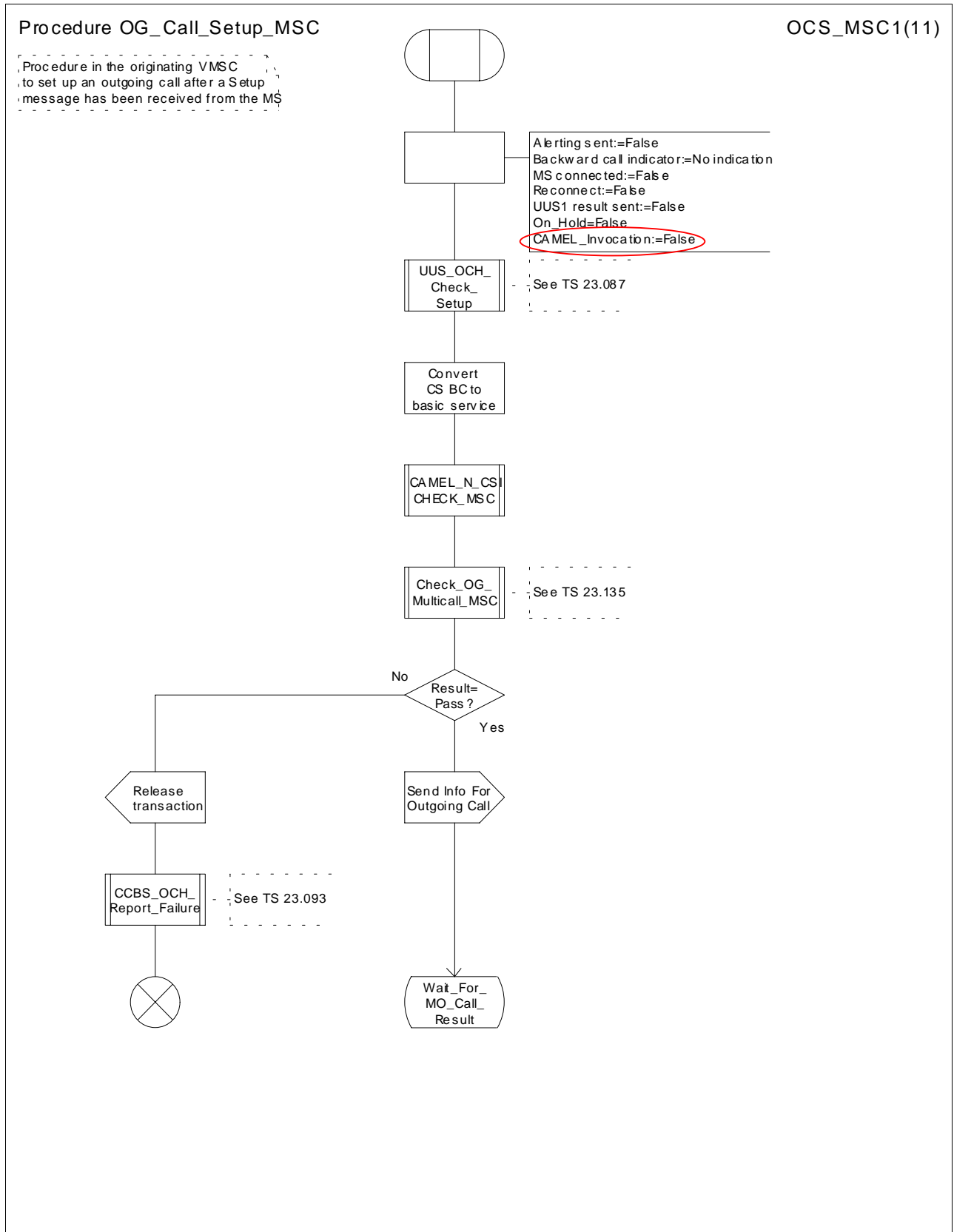


Figure 8a: Procedure OG\_Call\_Setup\_MSC (sheet 1)