

**3GPP TSG CN Plenary
Meeting #10, Bangkok, Thailand
6th – 8th December 2000**

Tdoc NP-000650

Source: TSG_CN WG 4
Title: CR to Rel-4 Work Item TEI
Agenda item: 8.19
Document for: APPROVAL

Introduction:

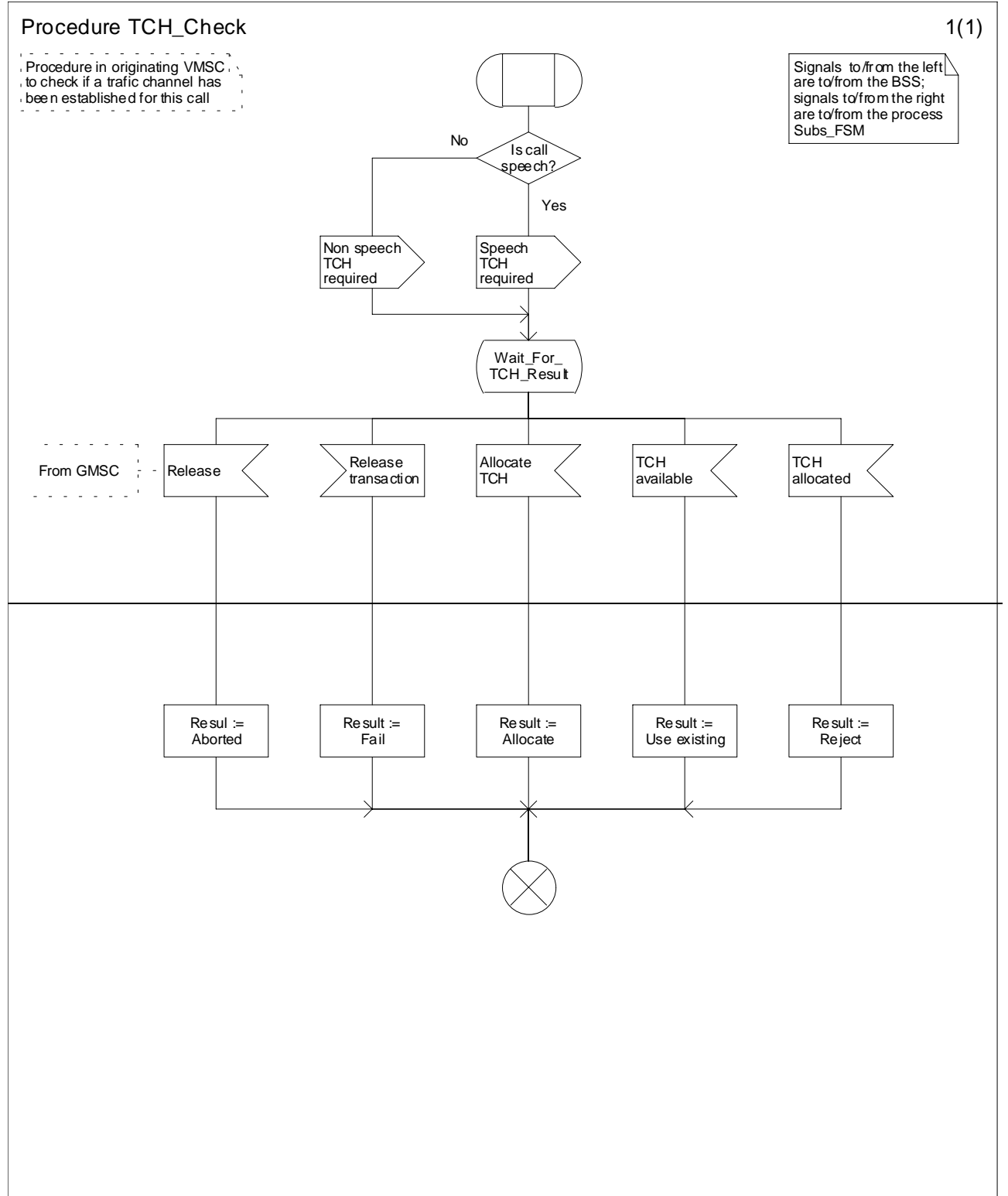
This document contains 1 CR on Rel-4 Work Item TEI, that have been agreed by TSG_CN WG4, and is forwarded to TSG_CN Plenary meeting #10 for approval.

SMG#	TDoc	SPEC	CR	RE	PHAS	VERS	SUBJECT	CAT
CN10	N4-000944	23.018	064		Rel-4	4.0.0	Tidying up of Process Subs_FSM and inter-process signals.	C

***** First Modified Section *****

7.1 MO call

7.1.1 Functional requirements of serving MSC



Procedure TCH_Check

1(1)

Procedure in originating VMSC, to check if a traffic channel has been established for this call

Signals to/from the left are to/from the BSS; signals to/from the right are to/from the process Subs_FSM

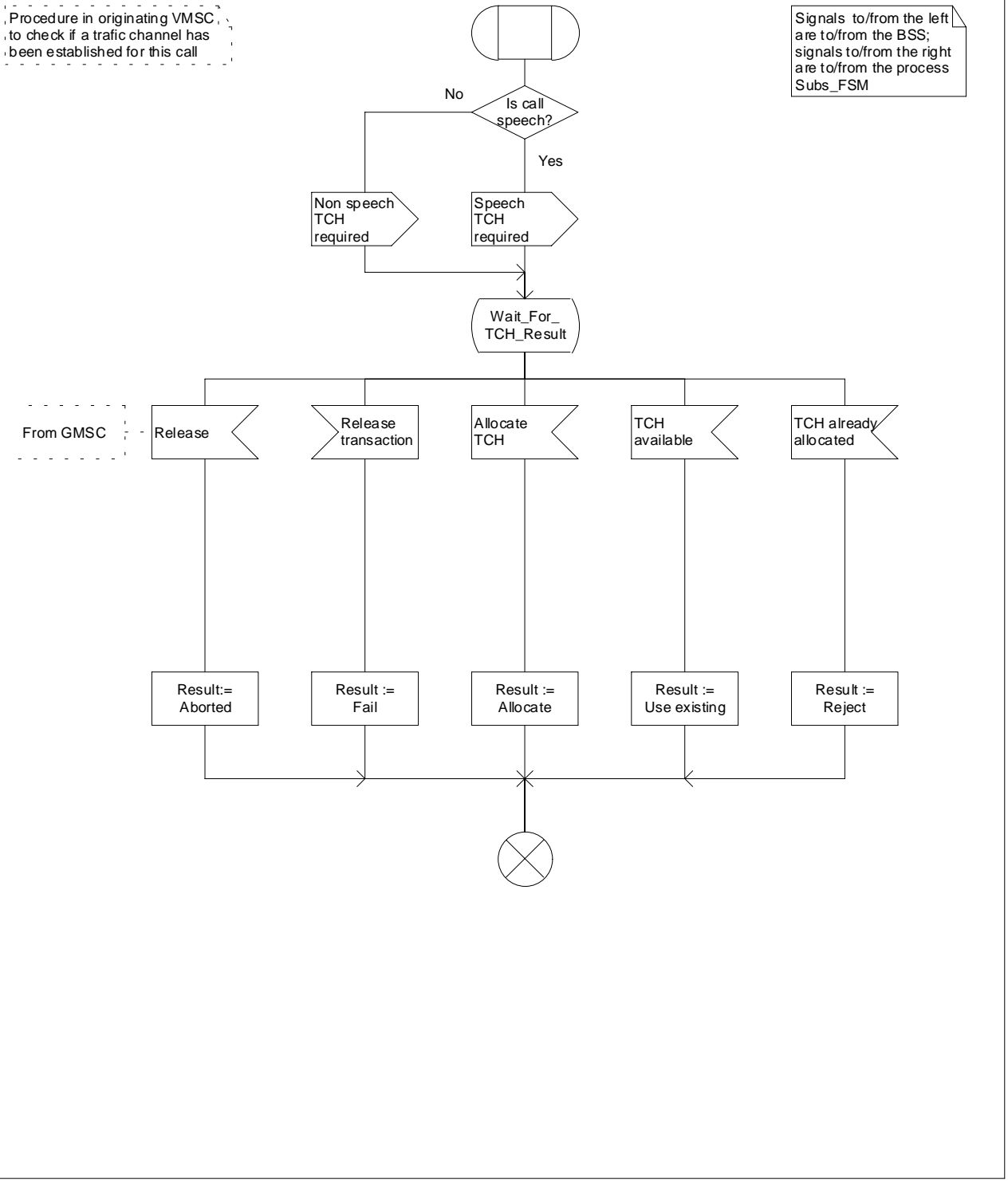


Figure 19: Procedure OCH_VLRTCH_Check

***** Next Modified Section *****

7.3 MT call

7.3.1 Functional requirements of serving MSC

....

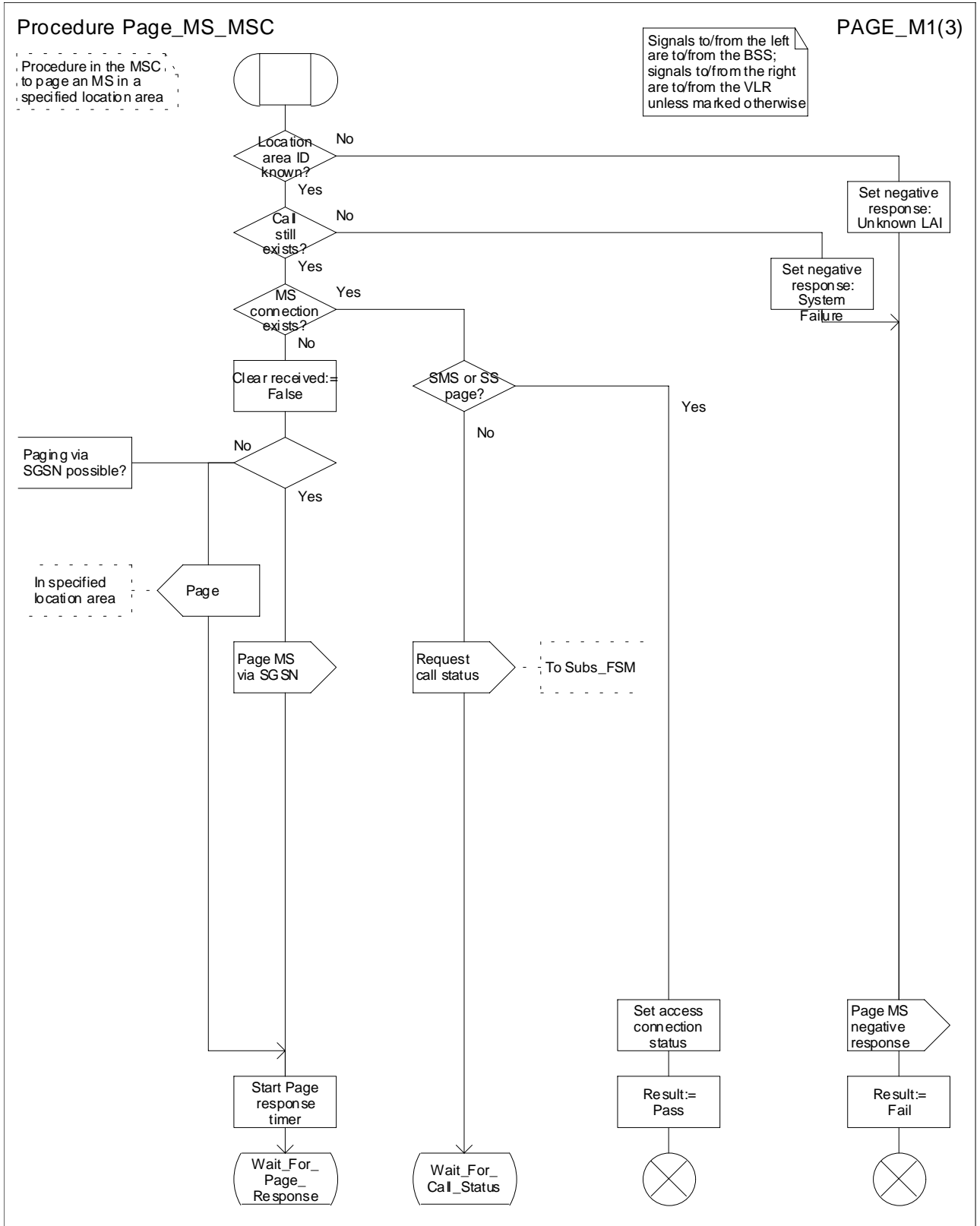
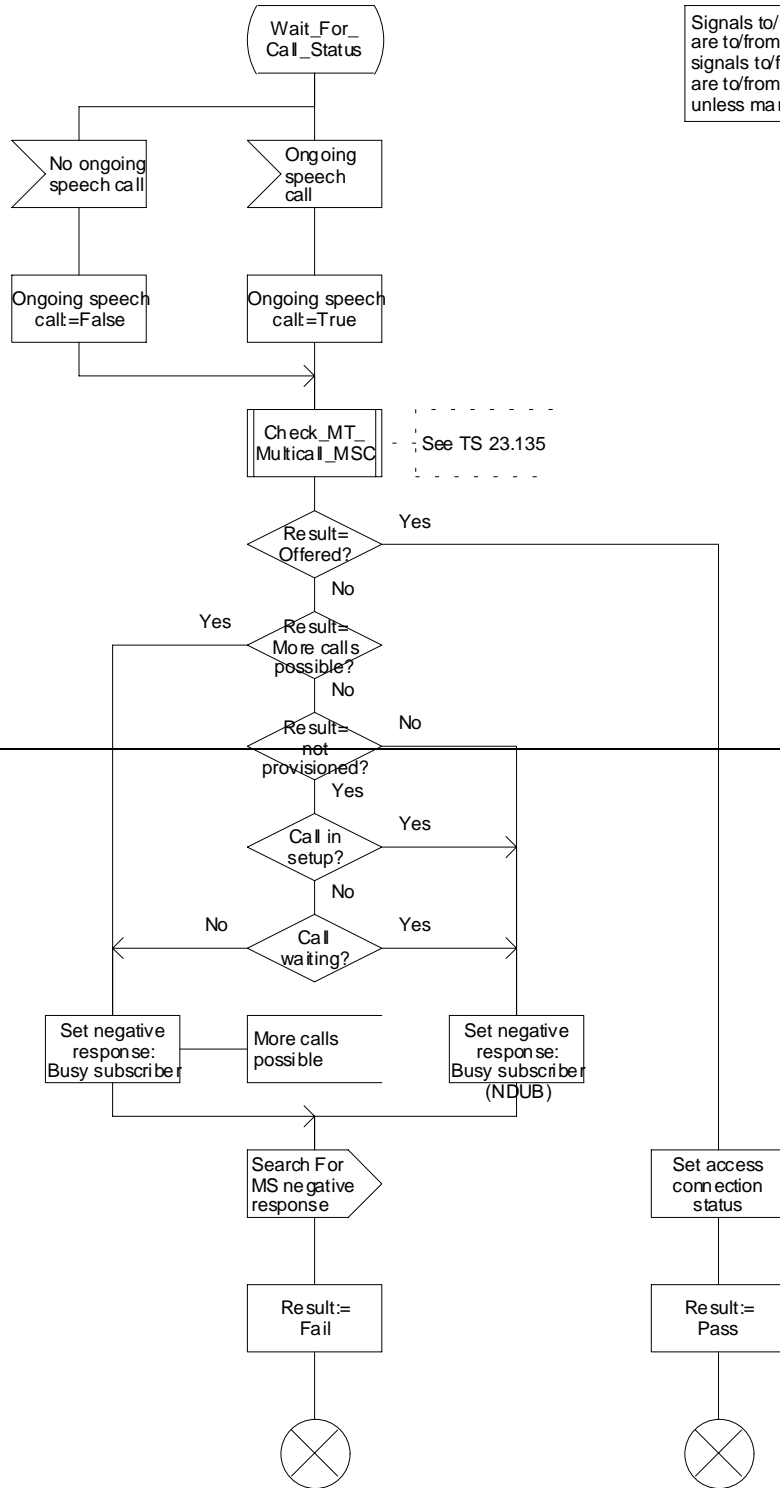


Figure 68a: Procedure Page_MS_MSC (sheet 1)

Procedure in the MSC to page an MS in a specified location area

Signals to/from the left are to/from the BSS; signals to/from the right are to/from the VLR unless marked otherwise



Procedure in the MSC to page an MS in a specified location area

Signals to/from the left are to/from the BSS; signals to/from the right are to/from the VLR unless marked otherwise

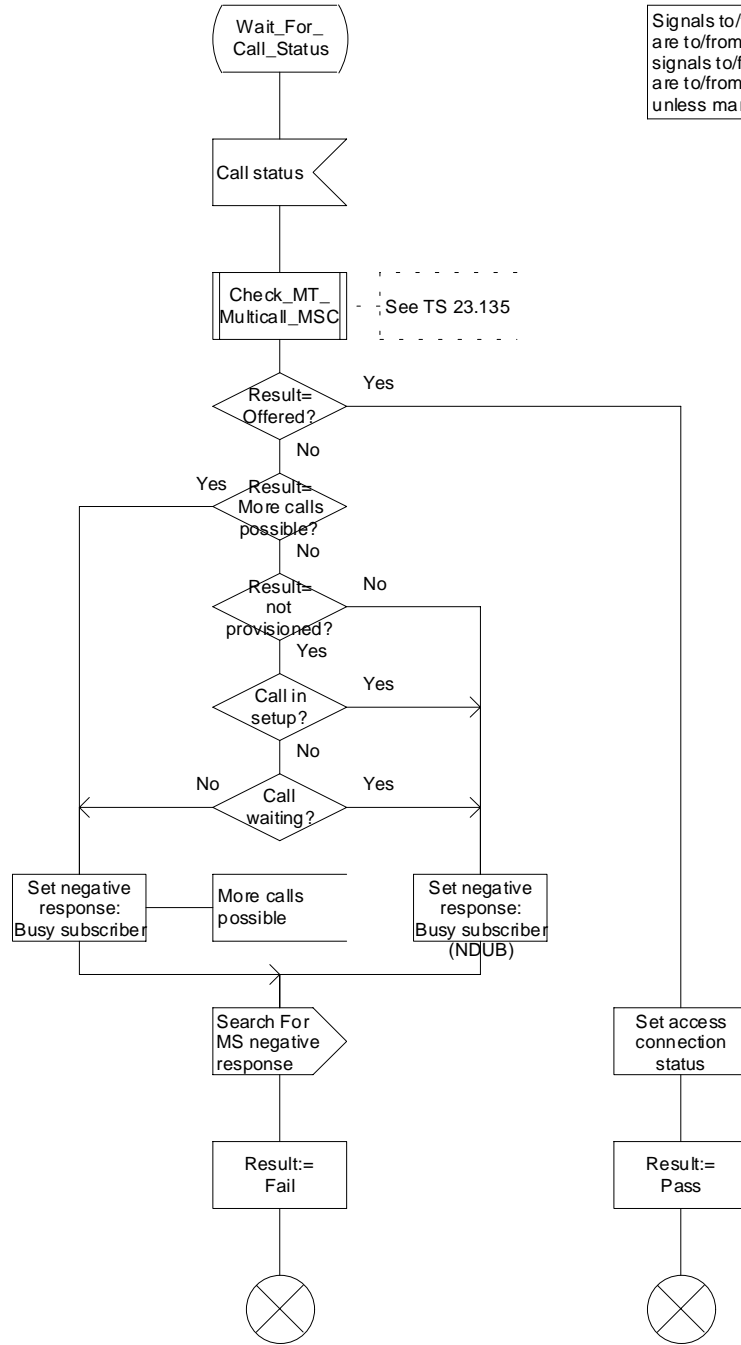


Figure 68b: Procedure Page_MS_MSC (sheet 2)

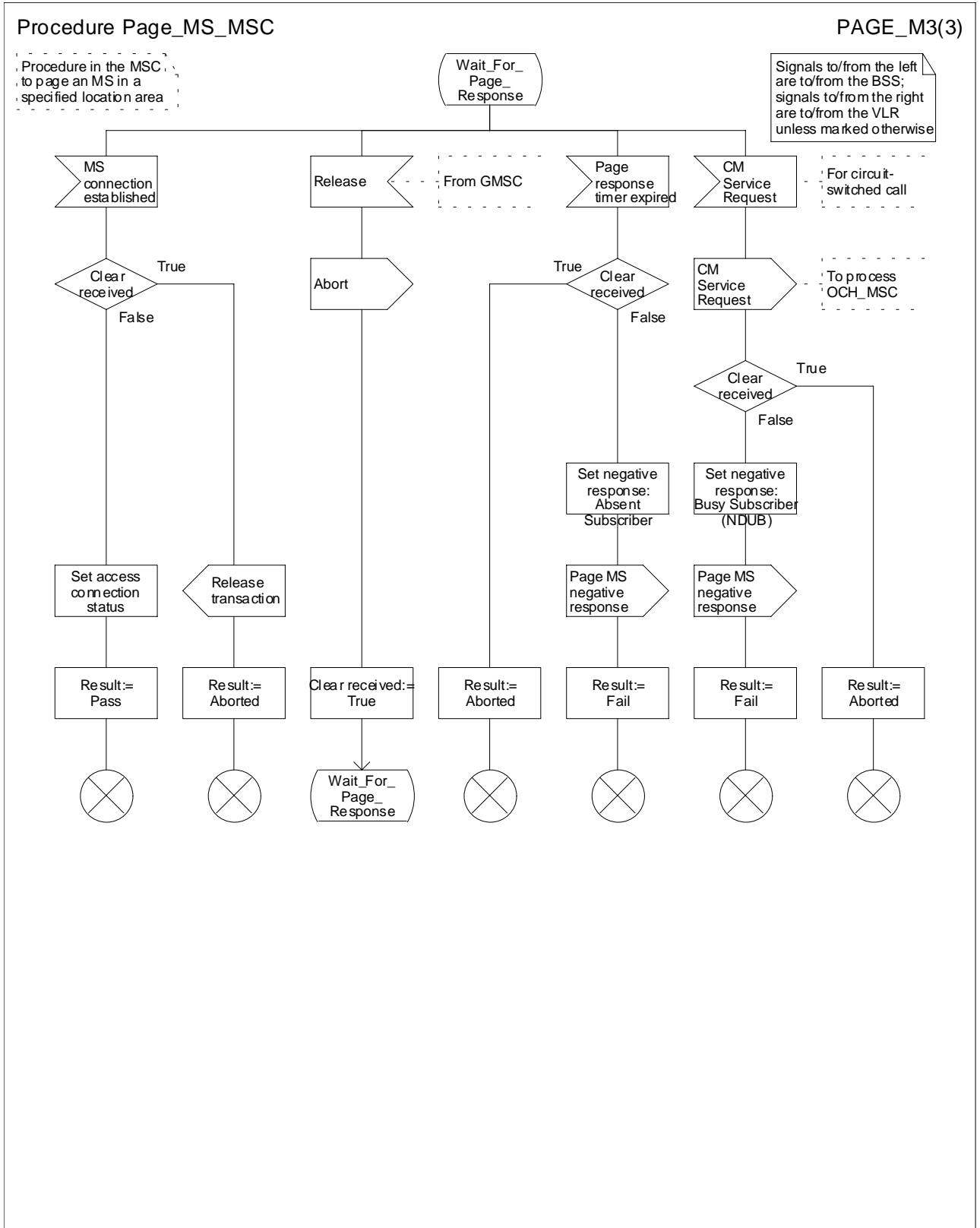


Figure 68c: Procedure Page_MS_MSC (sheet 3)

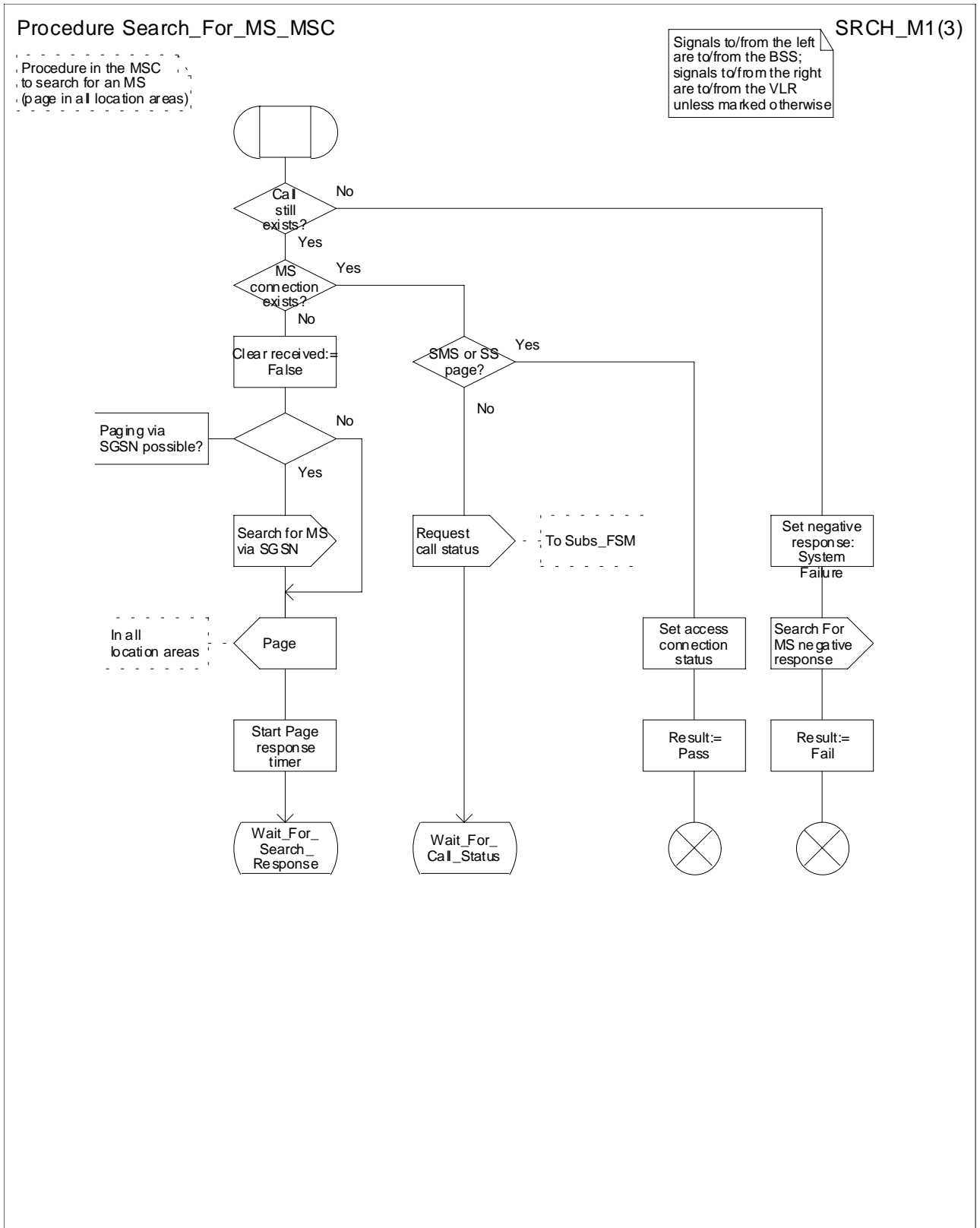


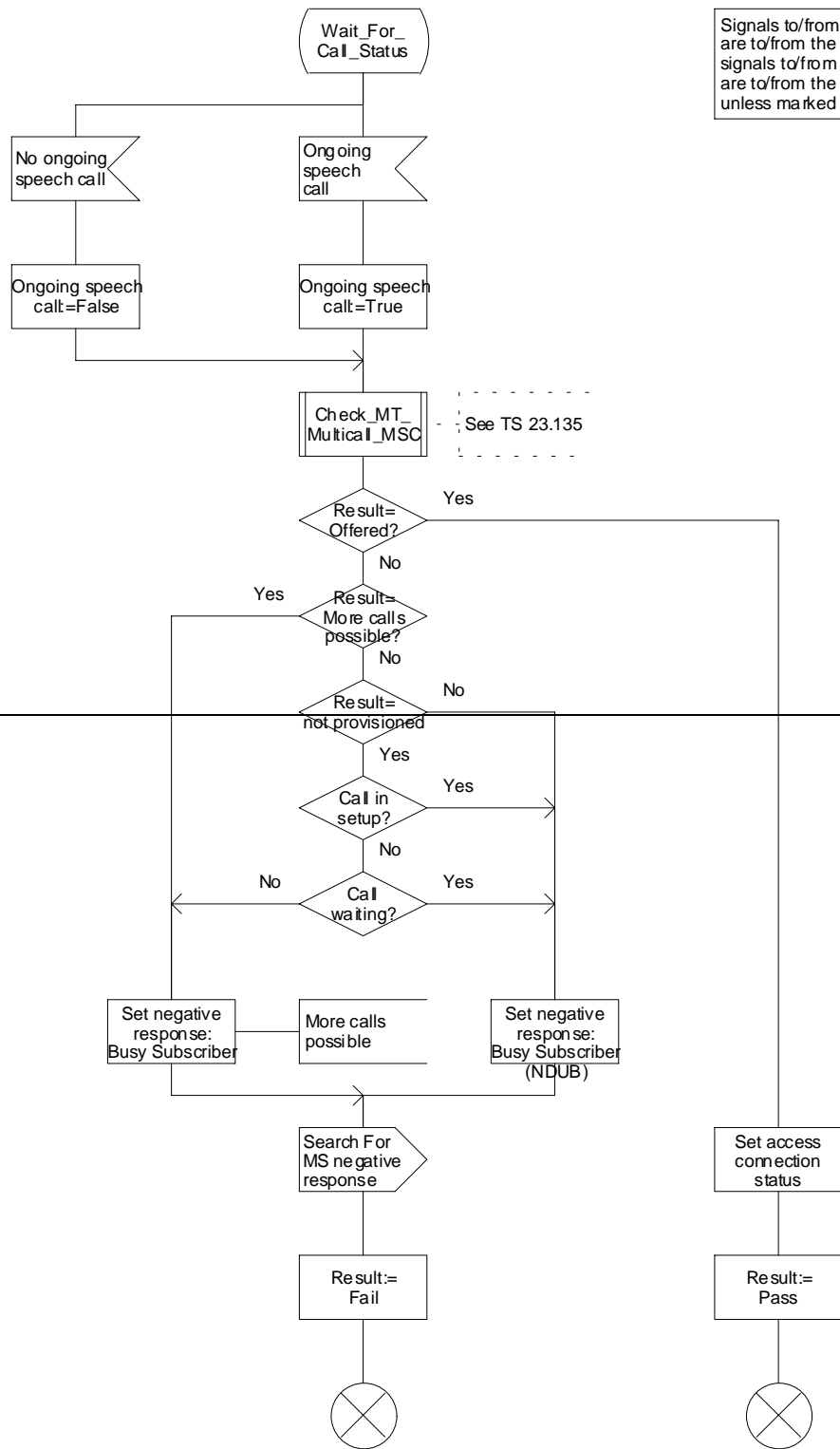
Figure 69a: Procedure Search_For_MS_MSC (sheet 1)

Procedure Search_For_MS_MSC

SRCH_M2(3)

Procedure in the MSC to search for an MS (page in all location areas)

Signals to/from the left are to/from the BSS; signals to/from the right are to/from the VLR unless marked otherwise



Procedure Search_For_MS_MSC

SRCH_M2(3)

Procedure in the MSC to search for an MS (page in all location areas)

Signals to/from the left are to/from the BSS; signals to/from the right are to/from the VLR unless marked otherwise

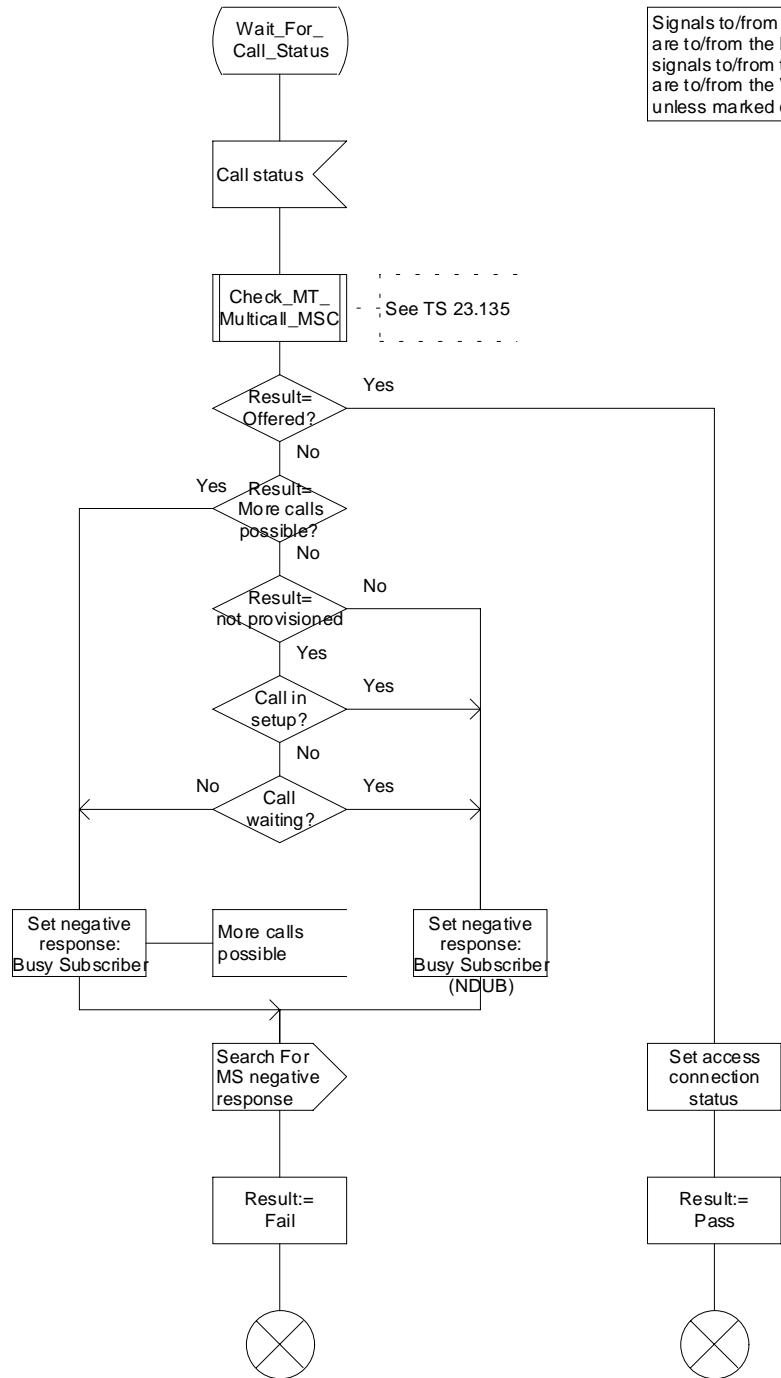


Figure 69b: Procedure Search_For_MS_MSC (sheet 2)

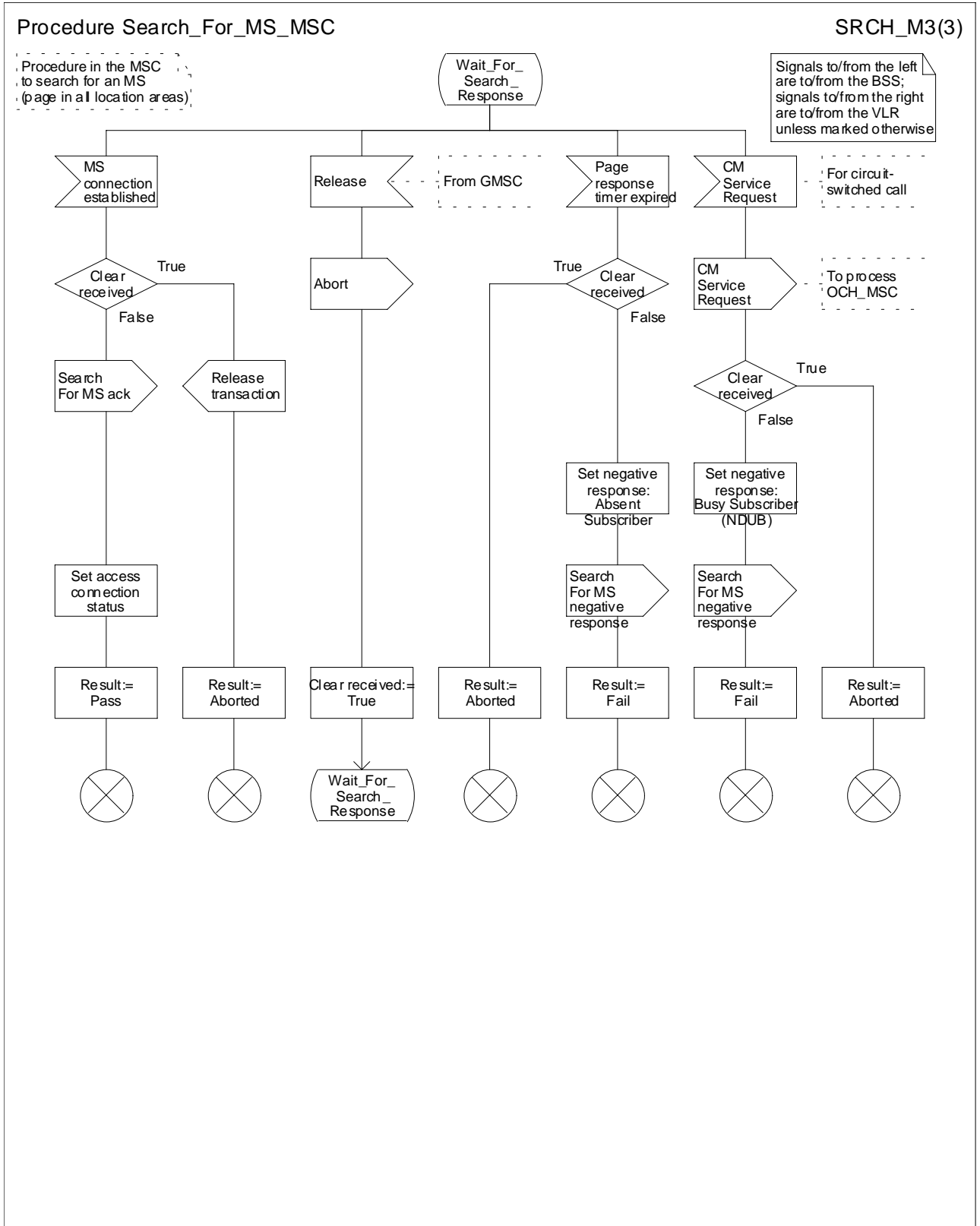


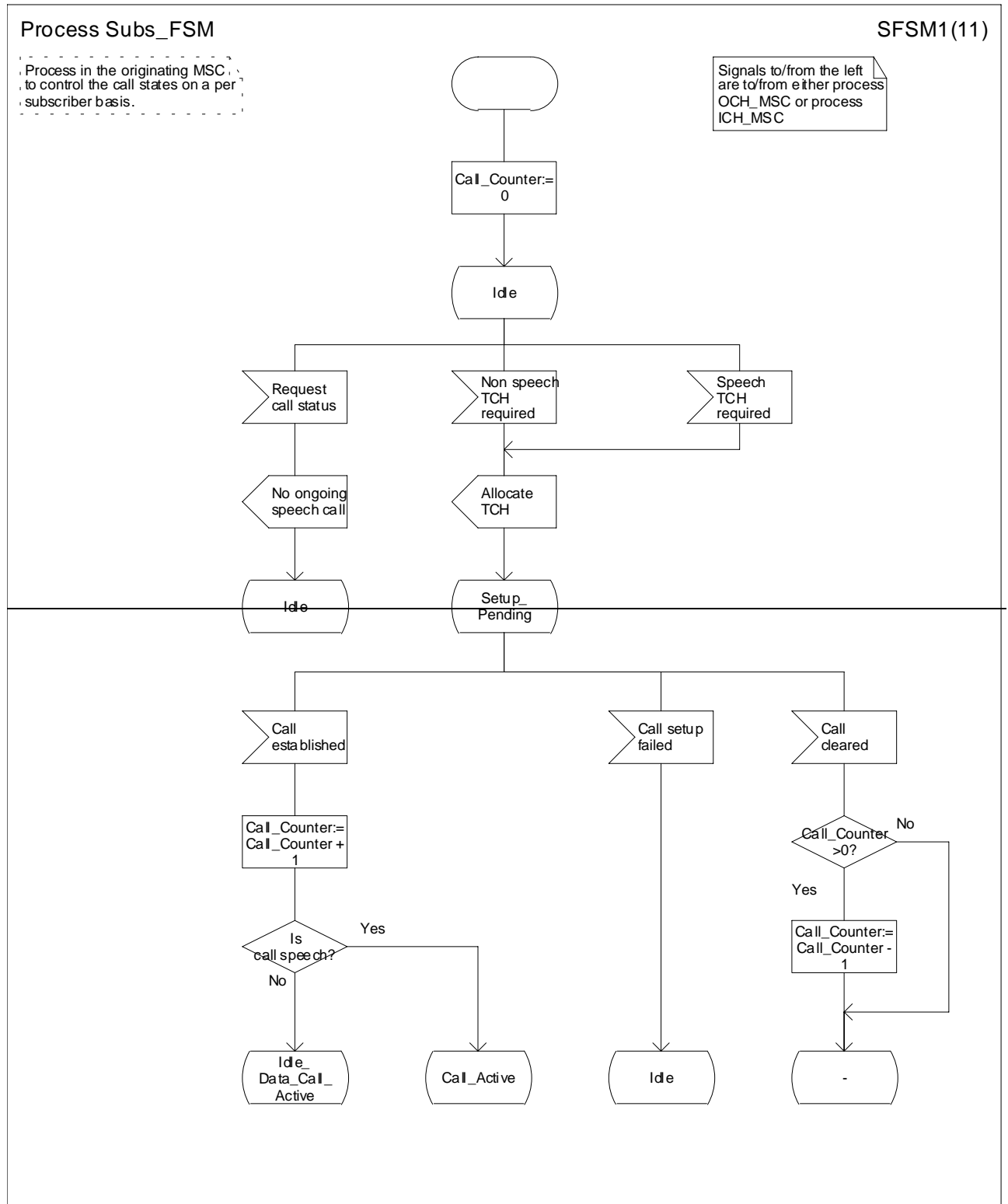
Figure 69b: Procedure Search_For_MS_MSC (sheet 3)

***** Last Modified Section *****

7.4 Subs_FSM

7.4.1 Functional requirements of serving MSC

....



Process Subs_FSM

SFSM1(14)

Process in the originating MSC, to control the call states on a per subscriber basis.

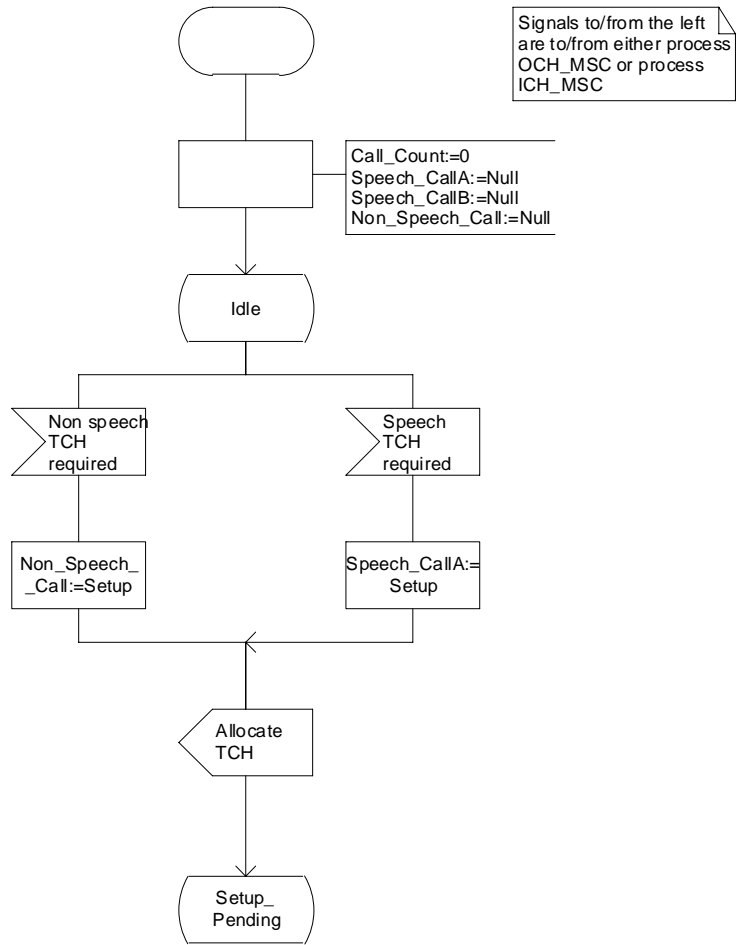


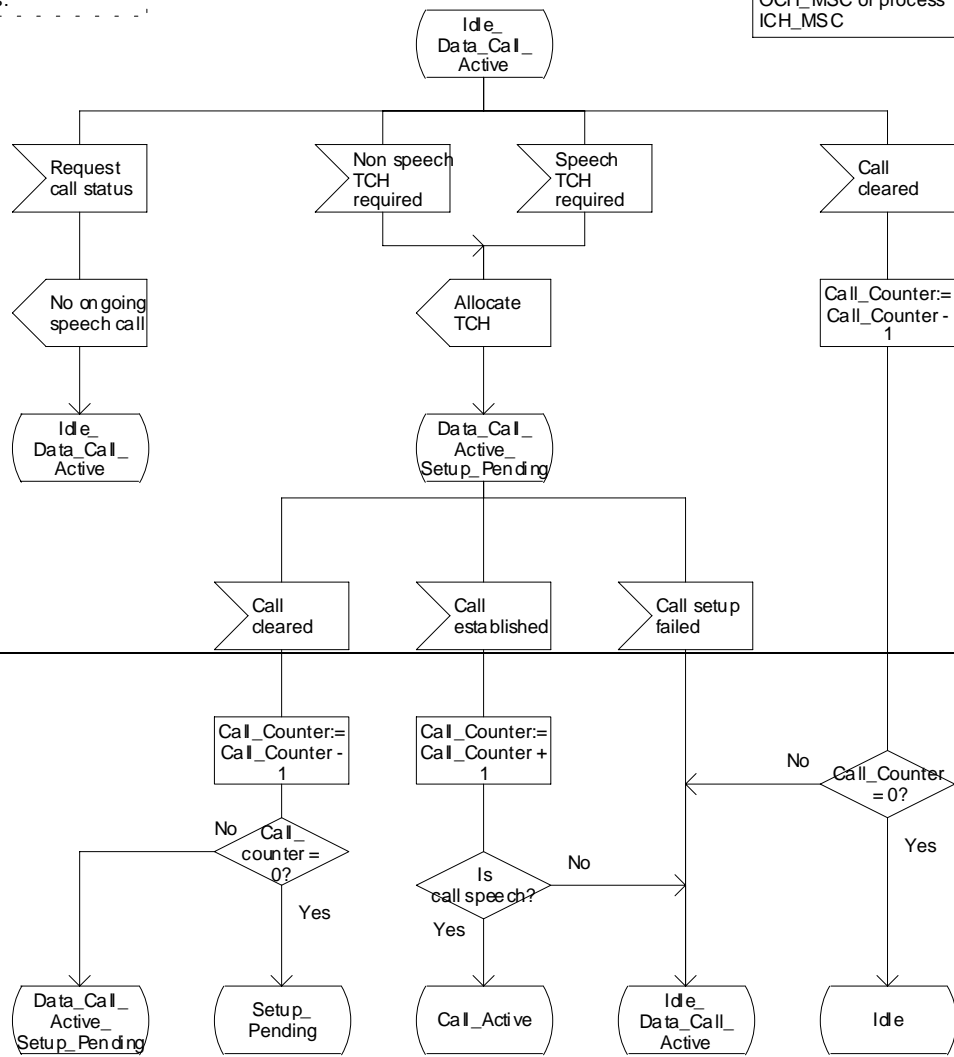
Figure 84a: Process Subs_FSM (sheet 1)

Process Subs_FSM

SFSM2(11)

Process in the originating MSC, to control the call states on a per subscriber basis.

Signals to/from the left are to/from either process OCH_MSC or process ICH_MSC



Process Subs_FSM

SFSM2(14)

Process in the originating MSC, to control the call states on a per subscriber basis.

Signals to/from the left are to/from either process OCH_MSC or process ICH_MSC

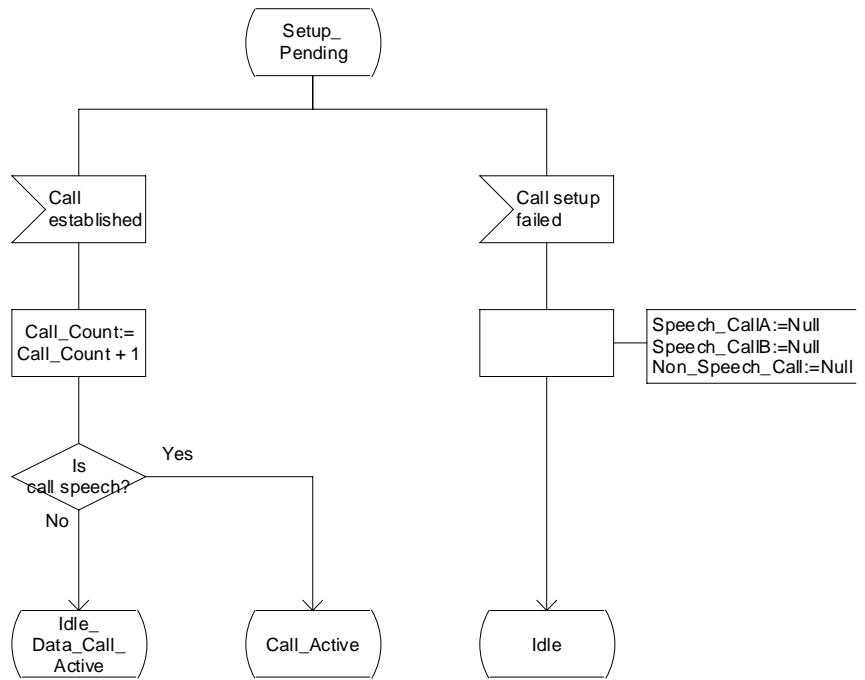


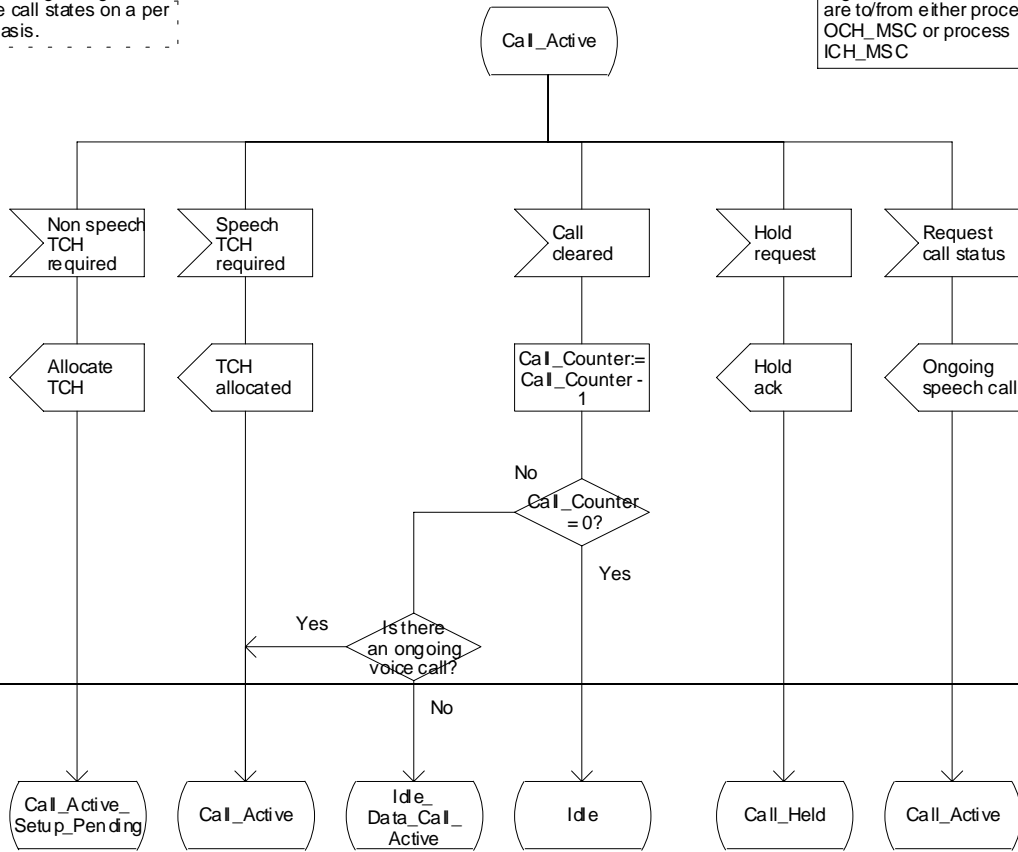
Figure 84b: Process Subs_FSM (sheet 2)

Process Subs_FSM

SFSM3(11)

Process in the originating MSC, to control the call states on a per subscriber basis.

Signals to/from the left are to/from either process OCH_MSC or process ICH_MSC



Process Subs_FSM

SFSM3(14)

Process in the originating MSC, to control the call states on a per subscriber basis.

Signals to/from the left are to/from either process OCH_MSC or process ICH_MSC

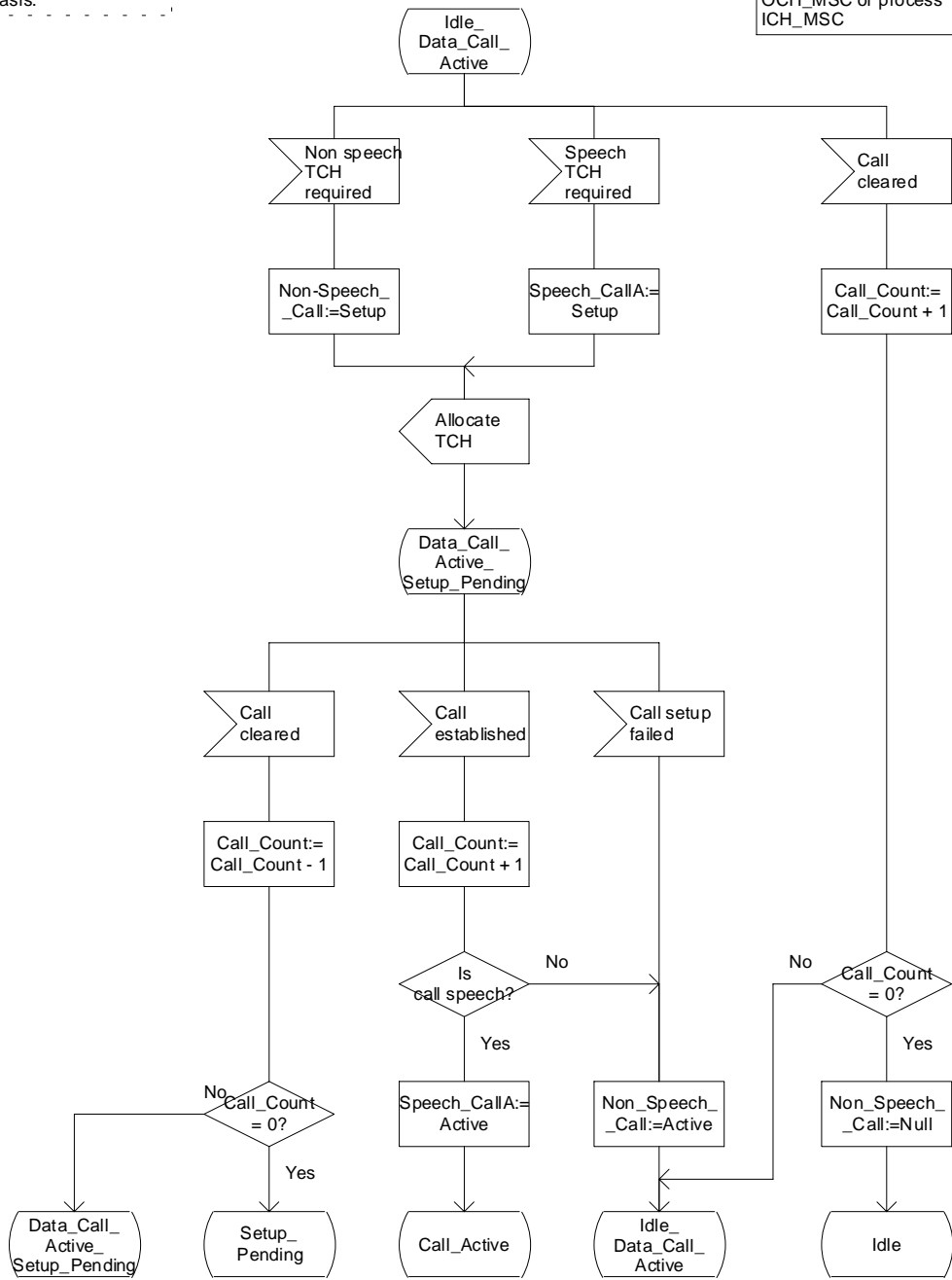


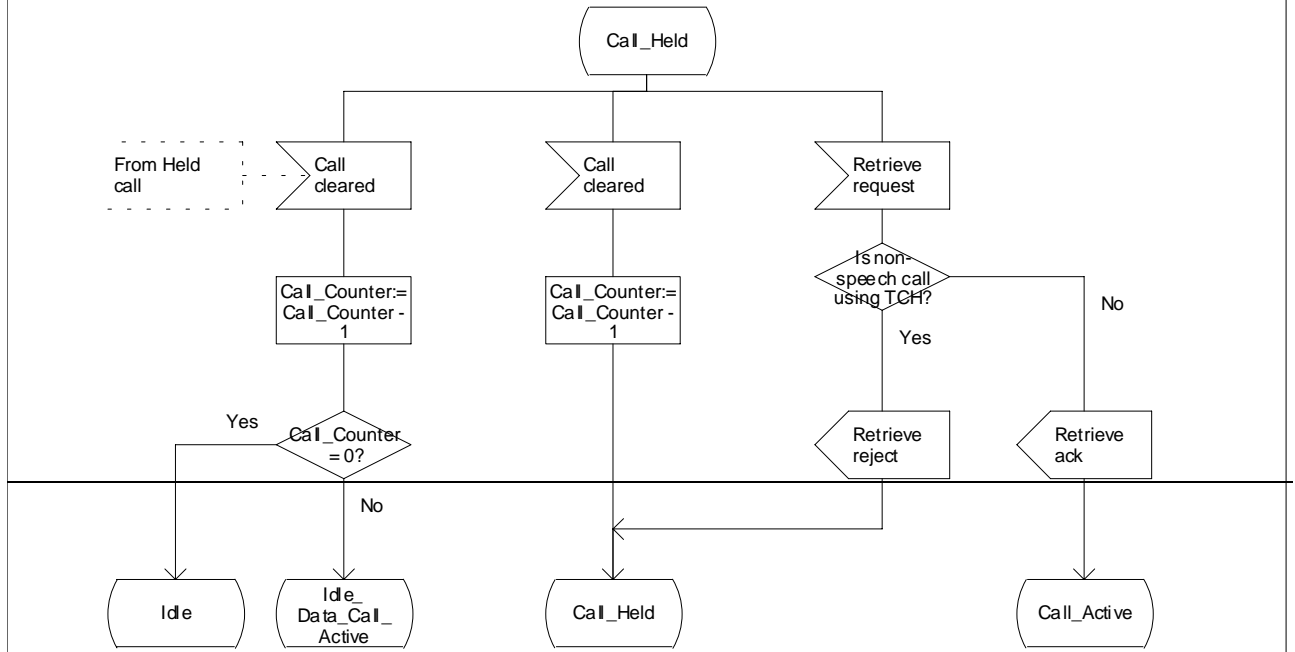
Figure 84c: Process Subs_FSM (sheet 3)

Process Subs_FSM

SFSM4(11)

Process in the originating MSC, to control the call states on a per subscriber basis.

Signals to/from the left are to/from either process OCH_MSC or process ICH_MSC unless marked otherwise



Process Subs_FSM

SFSM4(14)

Process in the originating MSC, to control the call states on a per-subscriber basis.

Signals to/from the left are to/from either process OCH_MSC or process ICH_MSC

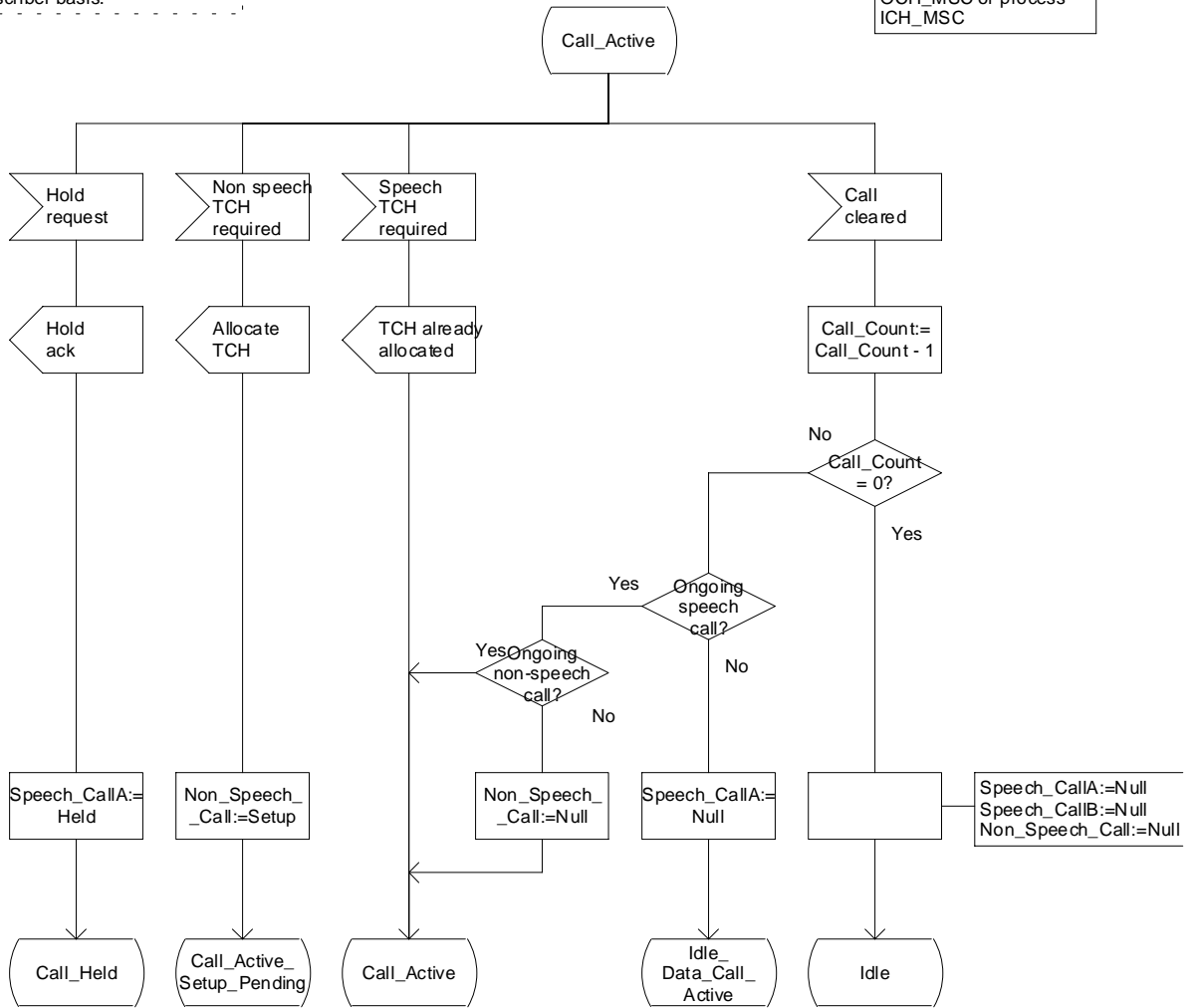
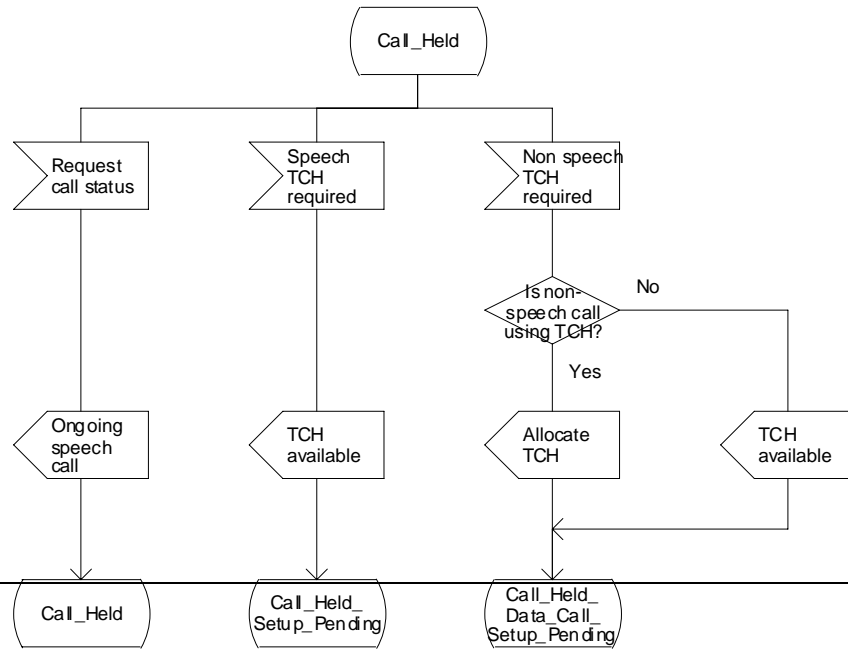


Figure 84d: Process Subs_FSM (sheet 4)

Process Subs_FSM

SFSM5(11)

Process in the originating MSC,
to control the call states on a per
subscriber basis.



Process Subs_FSM

SFSM5(14)

Process in the originating MSC, to control the call states on a per subscriber basis.

Signals to/from the left are to/from either process OCH_MSC or process ICH_MSC unless marked otherwise

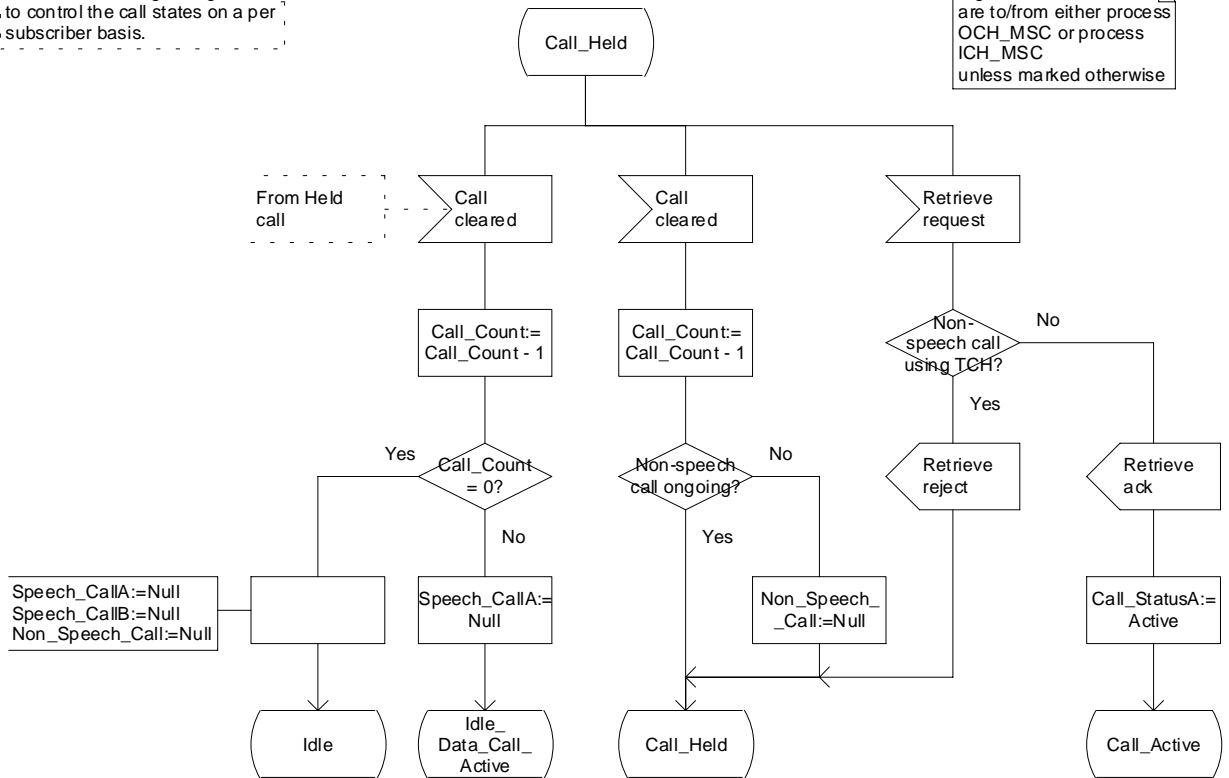


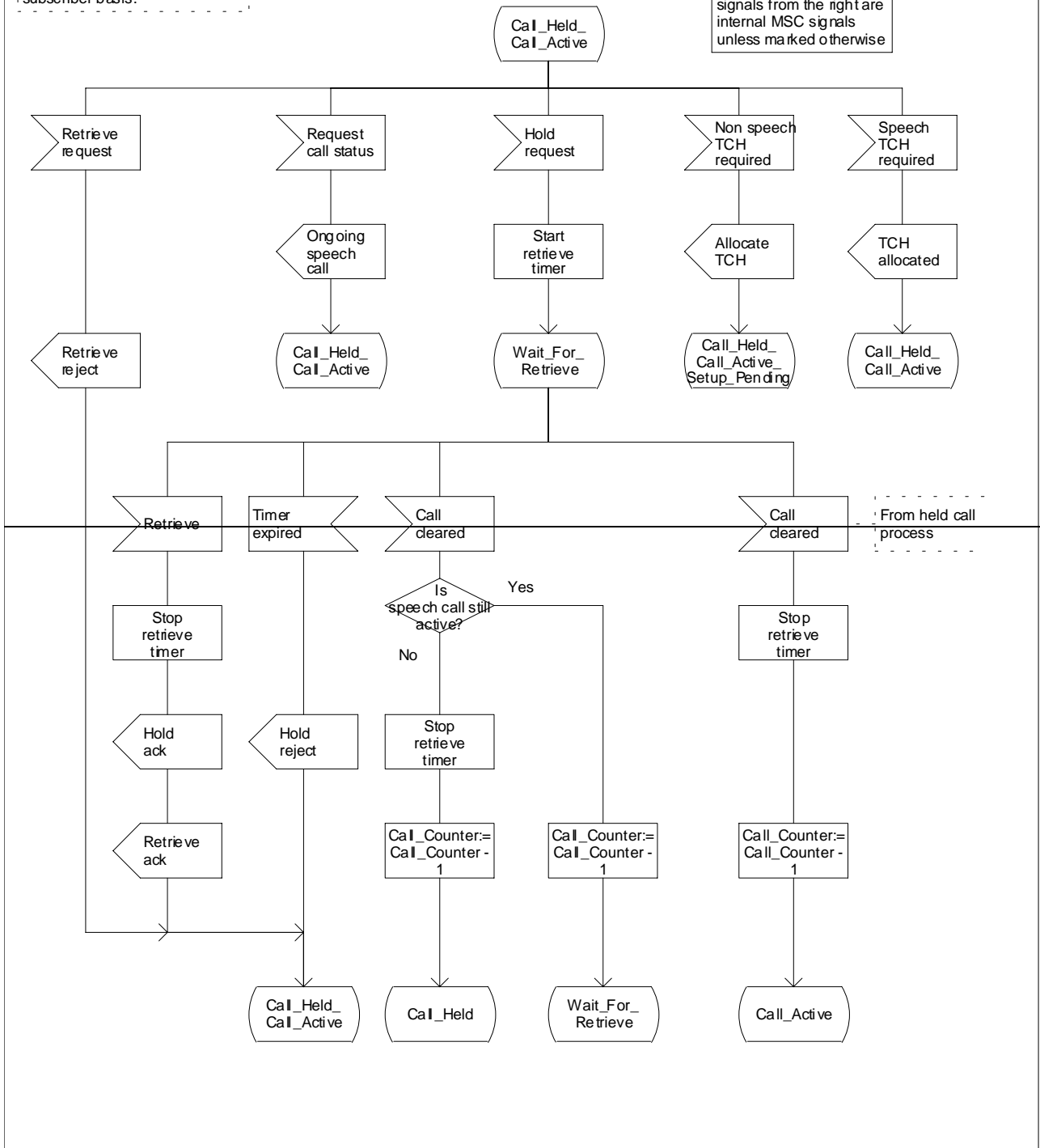
Figure 84e: Process Subs_FSM (sheet 5)

Process Subs_FSM

SFSM6(11)

Process in the originating MSC, to control the call states on a per subscriber basis.

Signals to/from the left are to/from either process OCH_MSC or process ICH_MSC; signals from the right are internal MSC signals unless marked otherwise



Process Subs_FSM

SFSM6(14)

Process in the originating MSC
to control the call states on a per
subscriber basis.

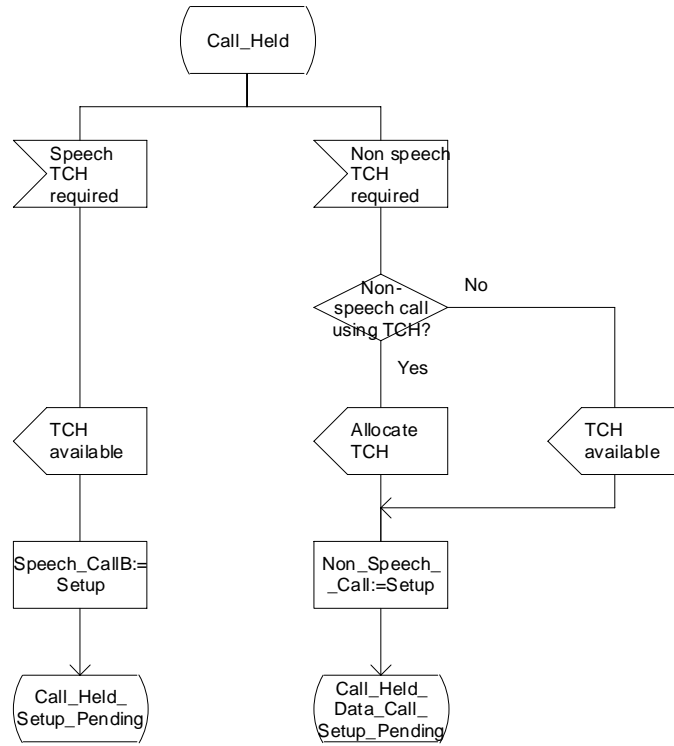


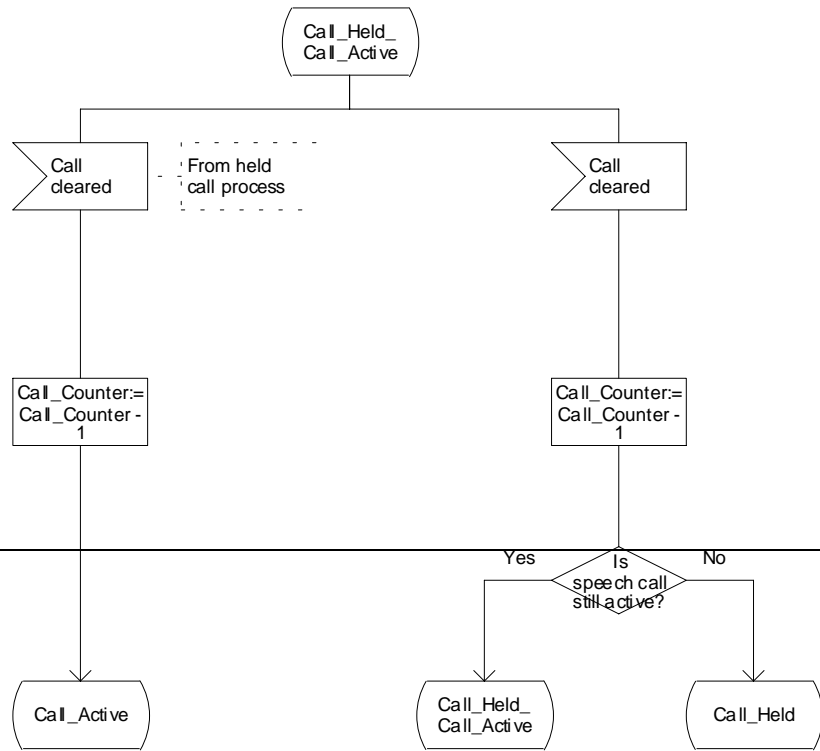
Figure 84f: Process Subs_FSM (sheet 6)

Process Subs_FSM

SFSM7(11)

Process in the originating MSC, to control the call states on a per subscriber basis.

Signals to/from the left are to/from either process OCH_MSC or process ICH_MSC unless marked otherwise



Process Subs_FSM

SFSM7(14)

Process in the originating MSC, to control the call states on a per-subscriber basis.

Signals to/from the left are to/from either process OCH_MSC or process ICH_MSC; signals from the right are internal MSC signals unless marked otherwise

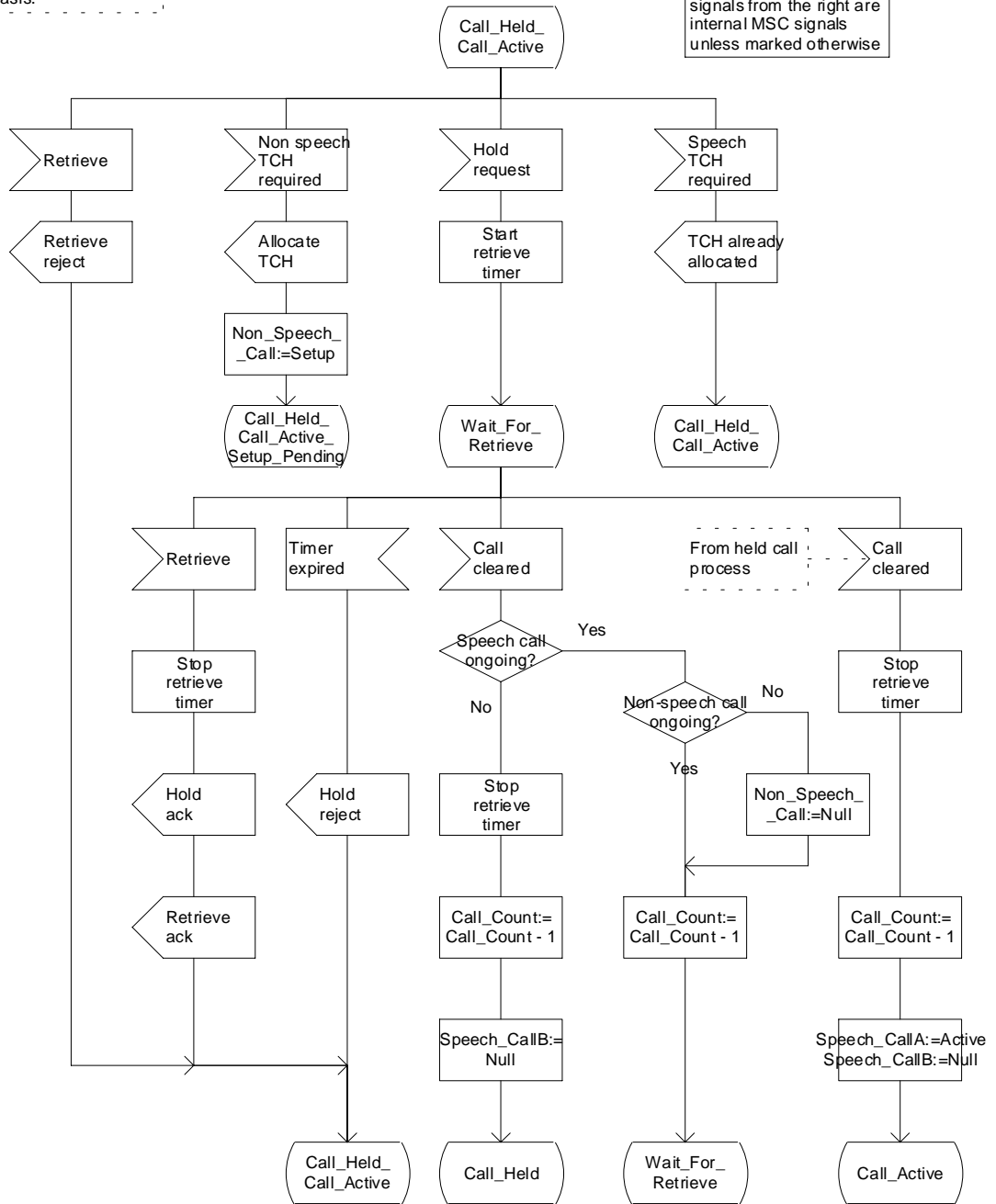


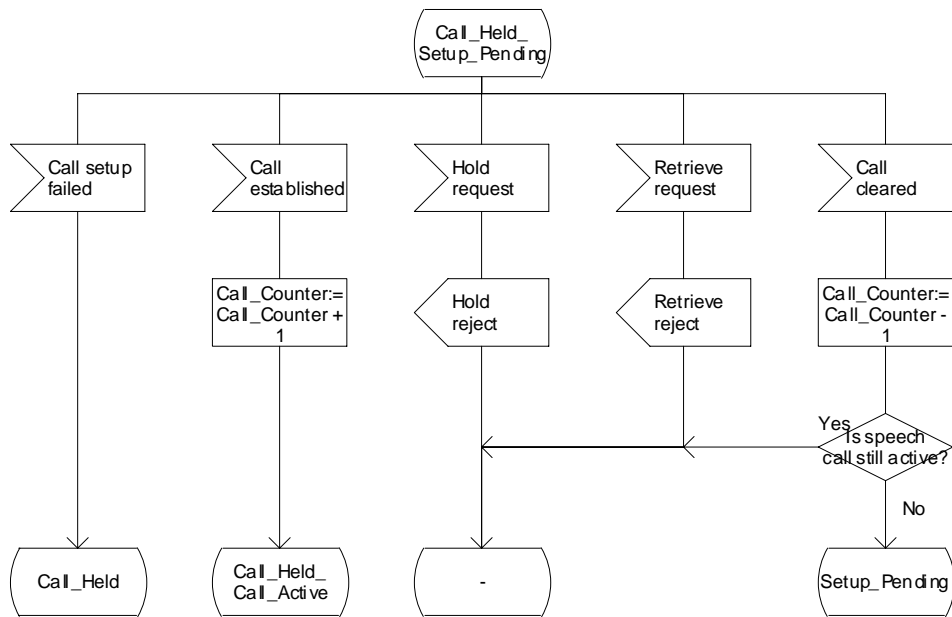
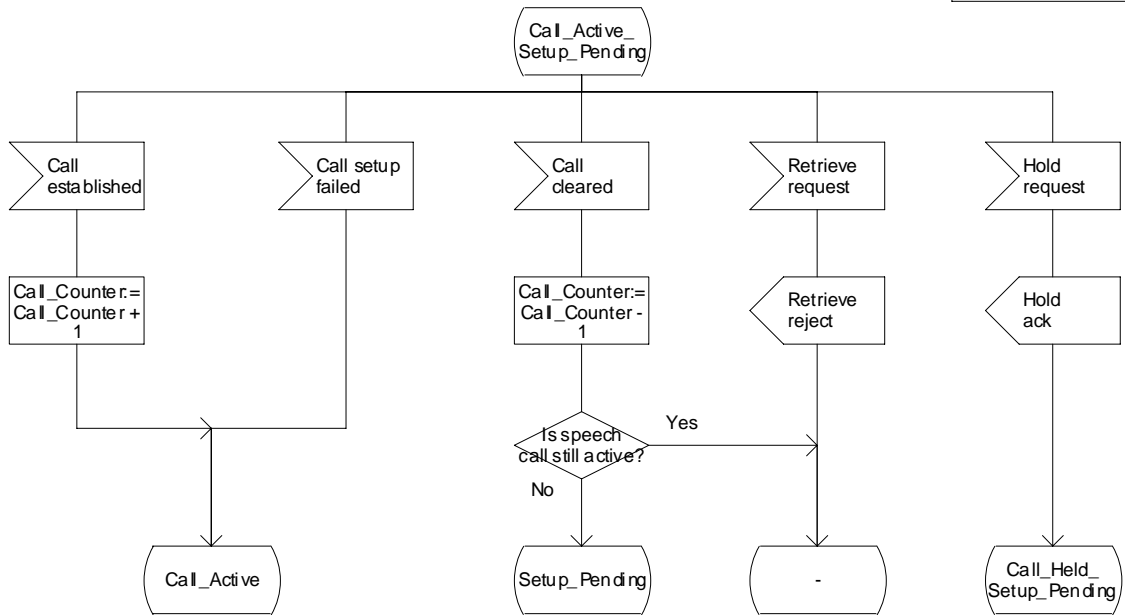
Figure 84g: Process Subs_FSM (sheet 7)

Process Subs_FSM

SFSM8(11)

Process in the originating MSC, to control the call states on a per subscriber basis.

Signals to/from the left are to/from either process OCH_MSC or process ICH_MSC



Process Subs_FSM

SFSM8(14)

Process in the originating MSC, to control the call states on a per subscriber basis.

Signals to/from the left are to/from either process OCH_MSC or process ICH_MSC unless marked otherwise

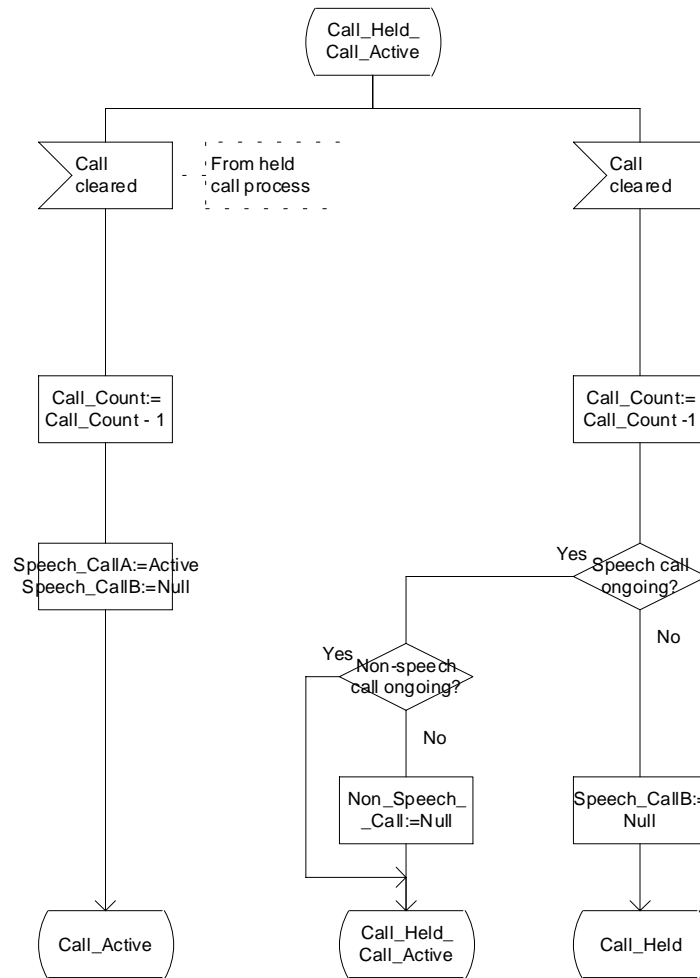


Figure 84h: Process Subs_FSM (sheet 8)

Process Subs_FSM

SFSM9(14)

Process in the originating MSC, to control the call states on a per subscriber basis.

Signals to/from the left are to/from either process OCH_MSC or process ICH_MSC

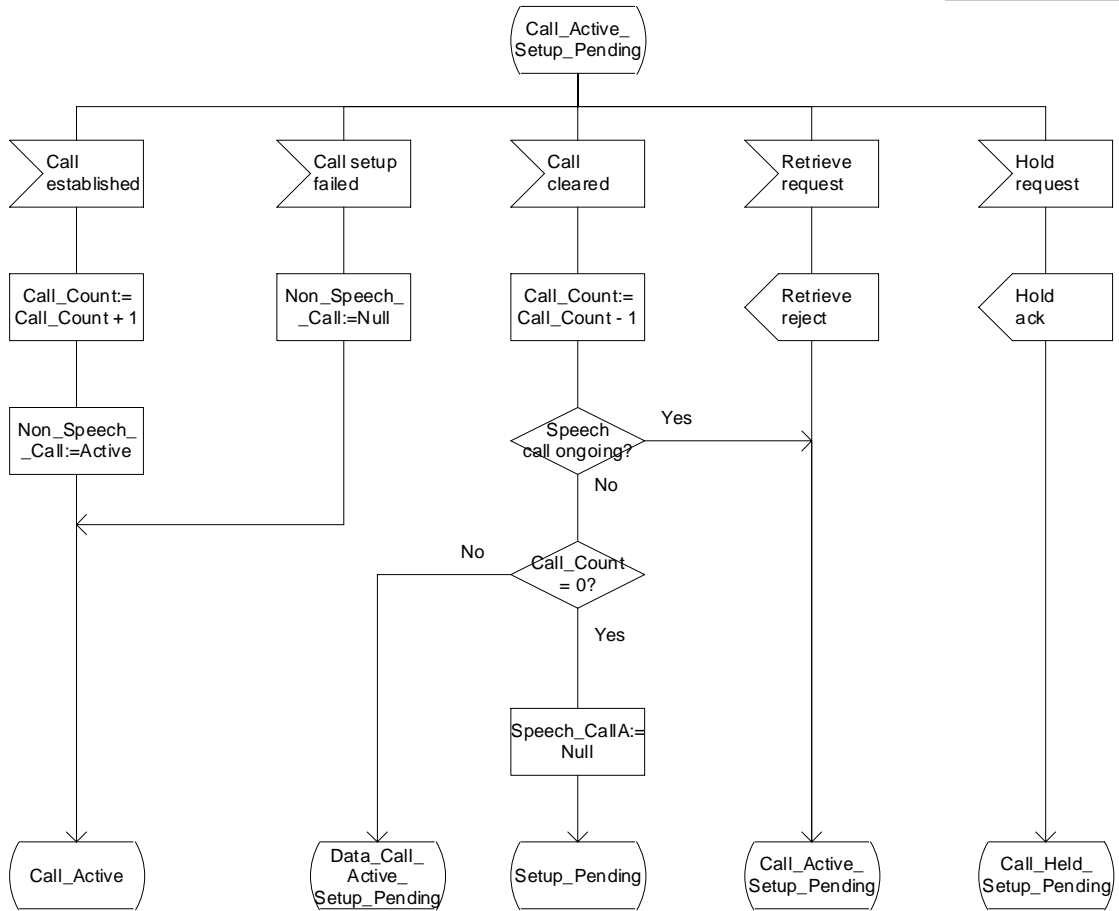
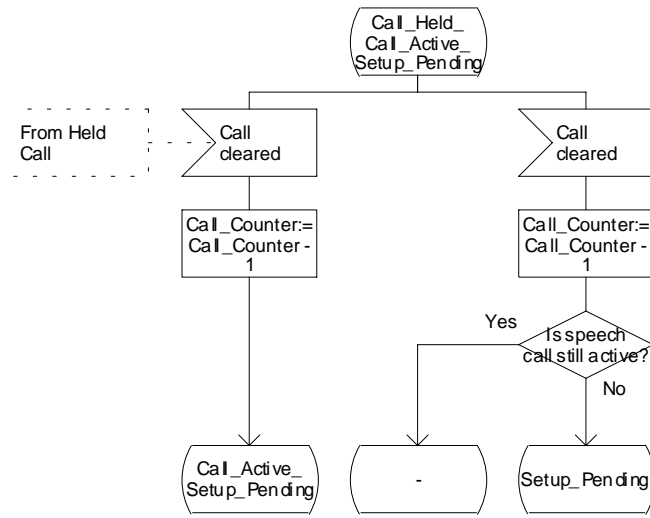


Figure 84i: Process Subs_FSM (sheet 9)

Process Subs_FSM

SFSM10(11)

Process in the originating MSC, to control the call states on a per subscriber basis.



Process Subs_FSM

SFSM10(14)

Process in the originating MSC, to control the call states on a per subscriber basis.

Signals to/from the left are to/from either process OCH_MSC or process ICH_MSC

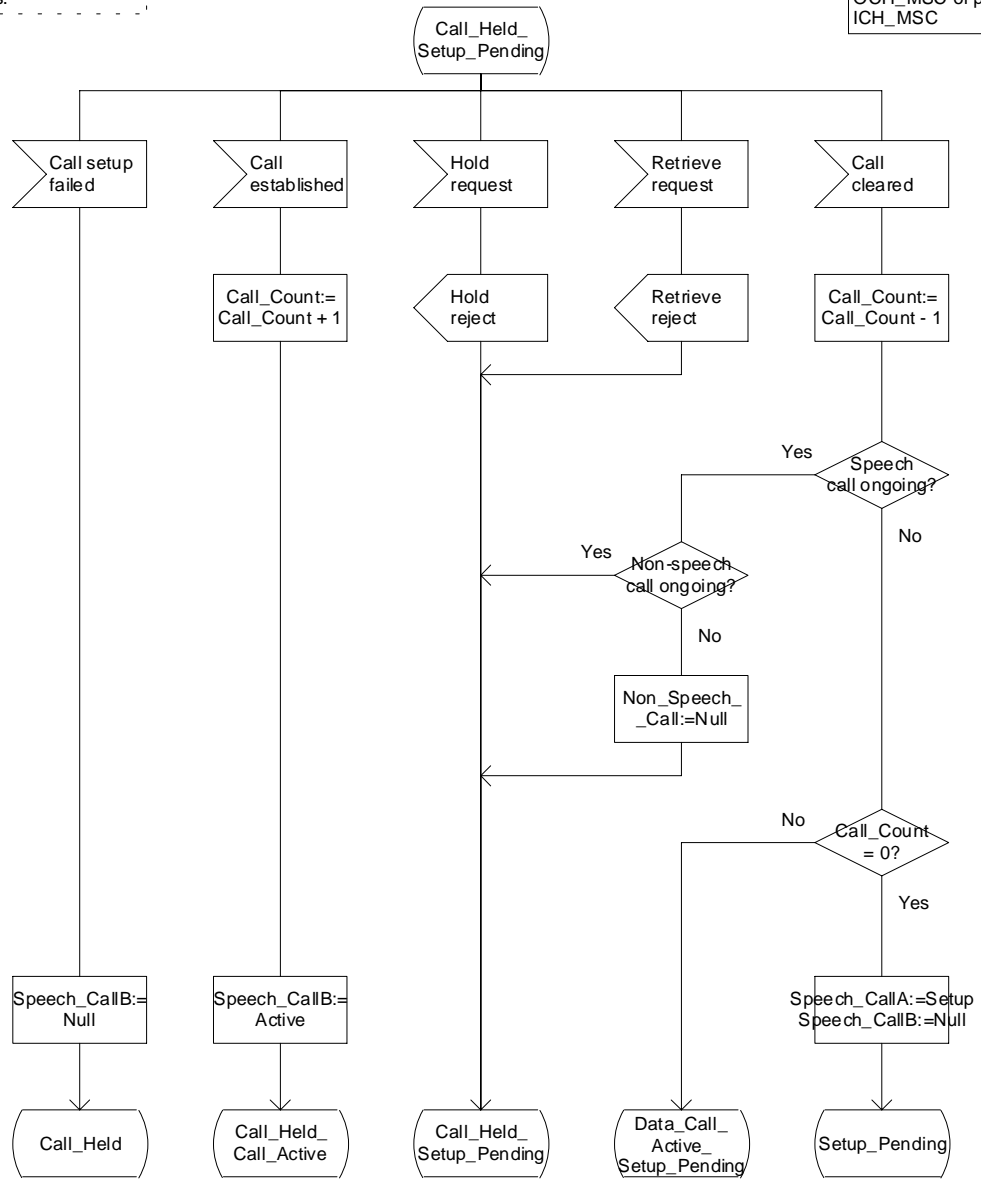
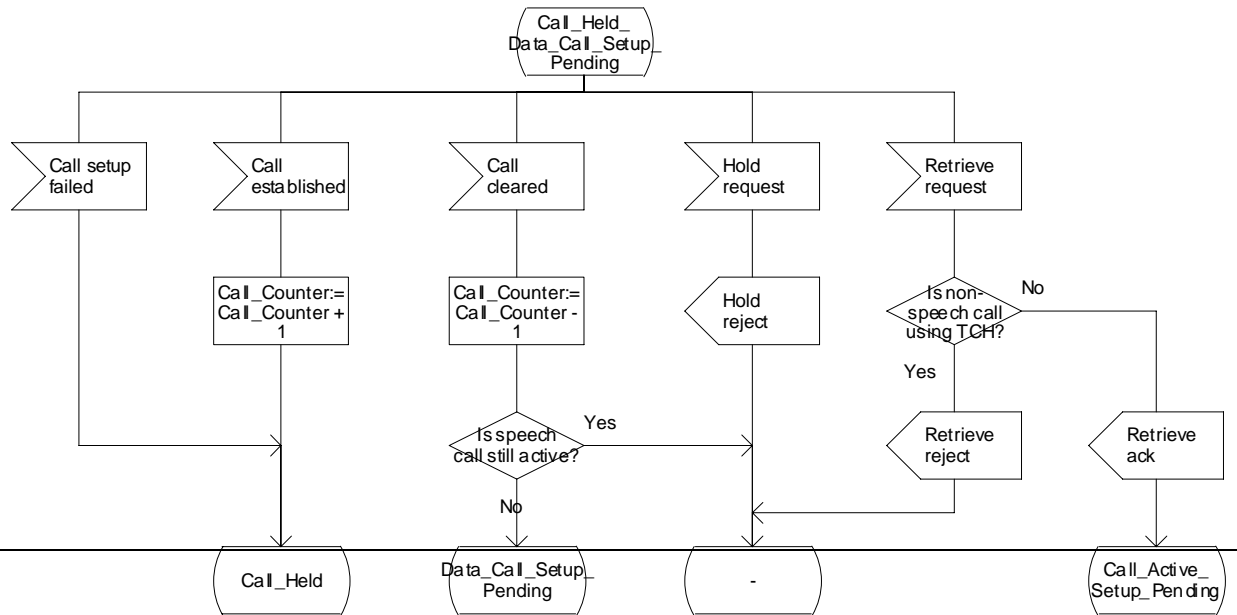


Figure 84j: Process Subs_FSM (sheet 10)

Process Subs_FSM

SFSM11(11)

Process in the originating MSC,
to control the call states on a per
subscriber basis.



Process Subs_FSM

SFSM12(14)

Process in the originating MSC,
to control the call states on a per
subscriber basis.

Signals to/from the left
are to/from either process
OCH_MSC or process
ICH_MSC

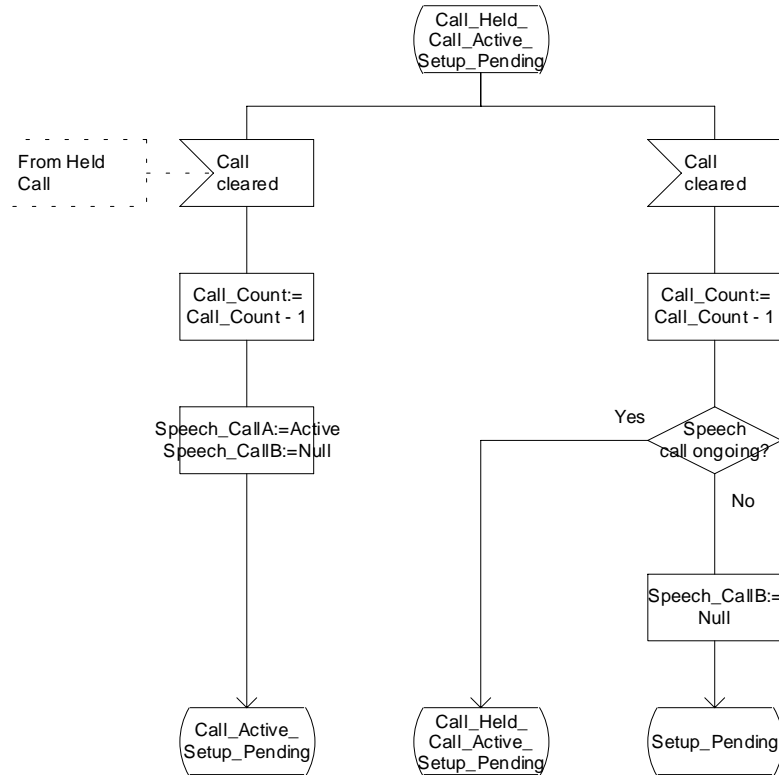


Figure 84I: Process Subs FSM (sheet 12)

Process Subs_FSM

SFSM13(14)

Process in the originating MSC, to control the call states on a per subscriber basis.

Signals to/from the left are to/from either process OCH_MSC or process ICH_MSC

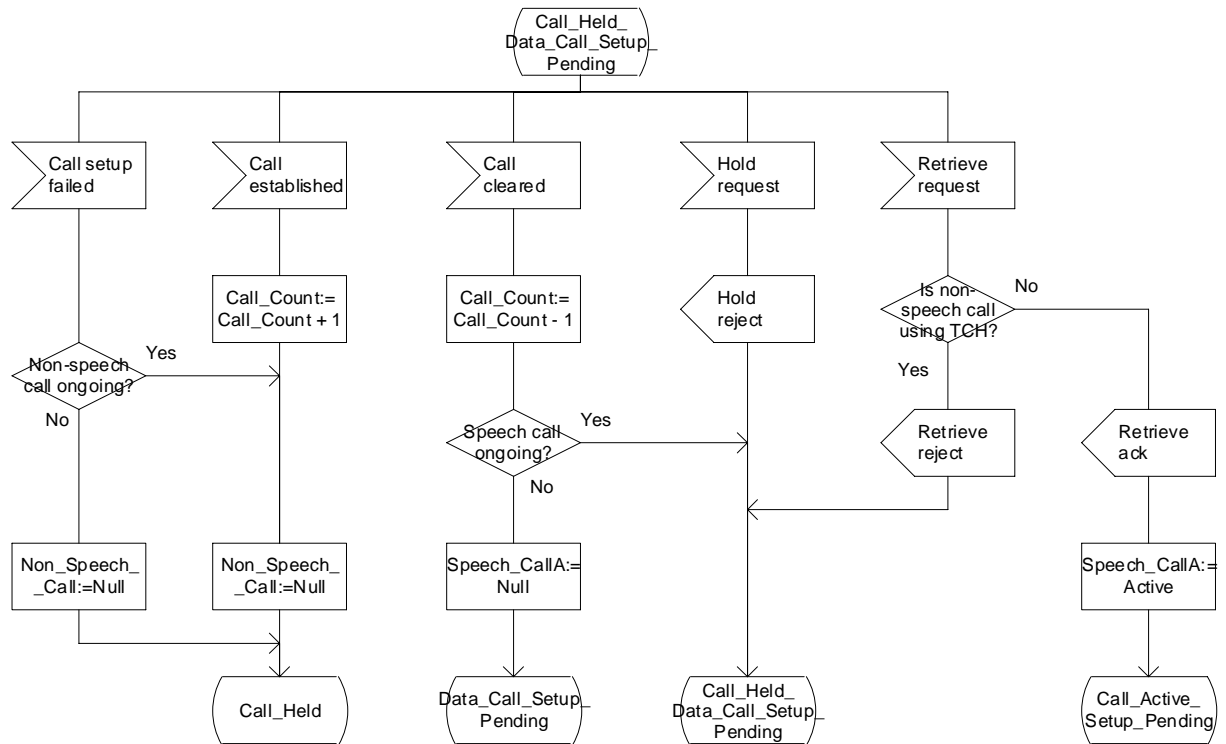


Figure 84m: Process Subs FSM (sheet 13)

Process Subs_FSM

SFSM14(14)

Process in the originating MSC, to control the call states on a per subscriber basis.

Signals to/from the left are to/from either process OCH_MSC or process ICH_MSC

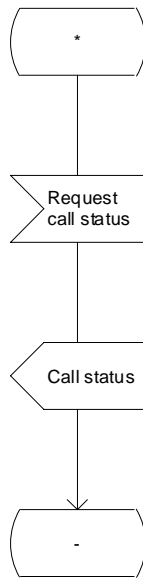


Figure 84n: Process Subs_FSM (sheet 14)