

**3GPP TSG\_CN  
Plenary Meeting #9, Oahu, Hawaii  
20<sup>th</sup> – 22<sup>nd</sup> September 2000.**

**Tdoc NP-000557**

**Source:** TSG\_N WG 4  
**Title:** CRs to R00 Work Item Technical Enhancements and Improvements (TEI)  
**Agenda item:** 7.19.4  
**Document for:** APPROVAL

---

**Introduction:**

This document contains 3 CRs on R00 Work Item TEI, that have been agreed by TSG\_N WG4, and is forwarded to TSG\_N Plenary meeting #9 for approval.

SM	TDoc	SPEC	CR	REV	PHAS	VERS	SUBJECT	CAT
CN9	N4-000491	29.002	158		R00	4.0.1	Deletion of Annex C	A
CN9	N4-000750	29.002	180	2	R00	4.0.1	Correction to MSC-A handover SDLs	A
CN9	N4-000751	29.002	186	1	R00	4.0.1	Correction to MSC-A handover SDLs	A





### 19.2.2.5 SDL Diagrams

The SDL diagrams on the following pages describe the user processes in MSC-A for the procedures described in this subclause.

The services used are defined in subclause 8.4.

NOTE: The message primitives HO\_CA\_MESSAGE used in the SDL-Diagrams are used to show the internal co-ordination between the MAP application and the Handover Control Application. For a detailed description of the co-ordination between the applications for the handover or relocation procedure, see 3G TS 23.009.

Note that in case of reception of errors from the MSCs (see the Handover error handling macro), the MAP user reports them to the Handover Control Application and does not take any action except in cases explicitly mentioned in the SDL diagrams.

Figure 19.2 2/1: HO in MSC-A

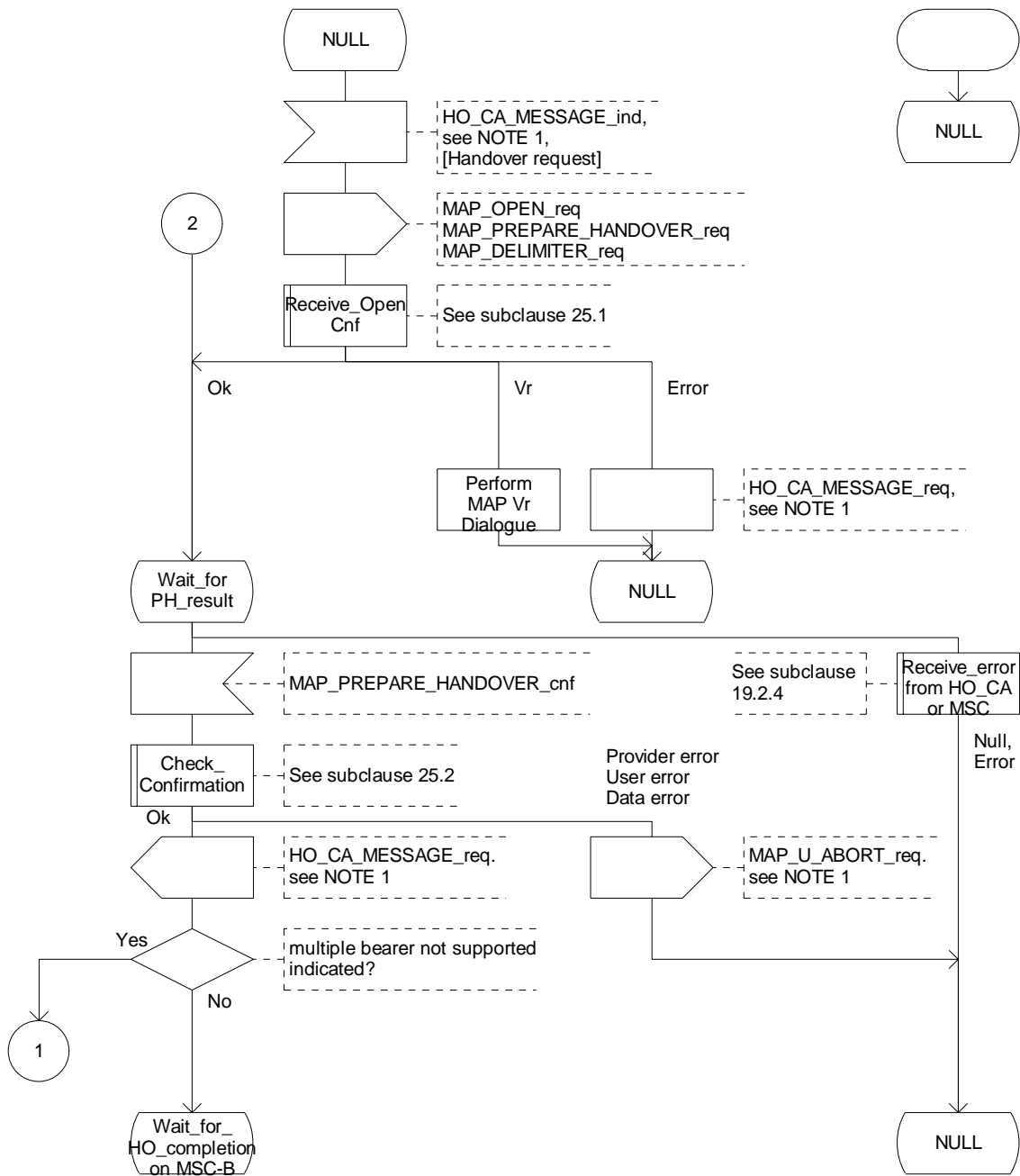


Figure 19.2.2/1 (sheet 1 of 13): Process MSC\_A\_HO

Figure 19.2 2/1: HO in MSC-A

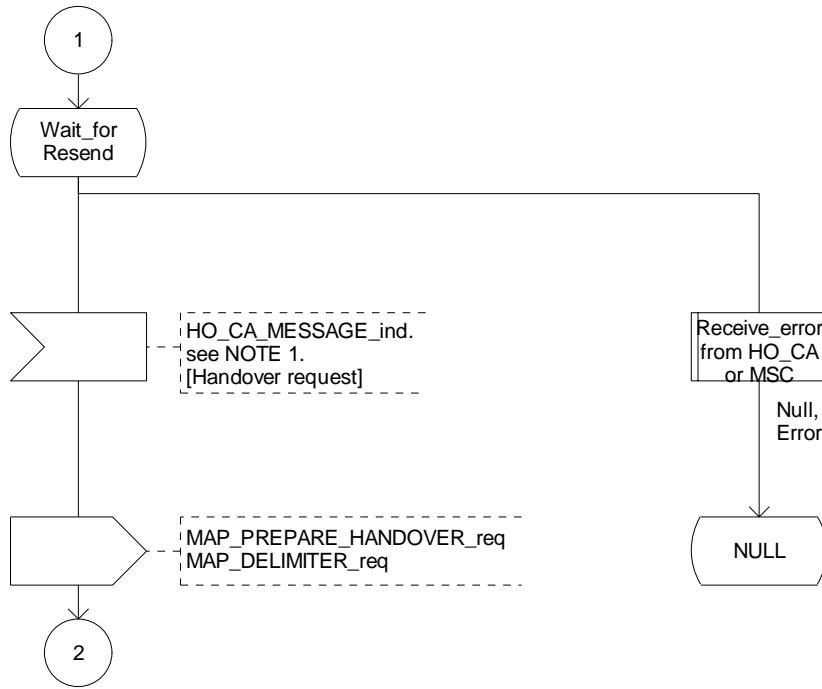


Figure 19.2.2/1 (sheet 2 of 13): Process MSC\_A\_HO

Figure 19.2 2/1: HO in MSC-A

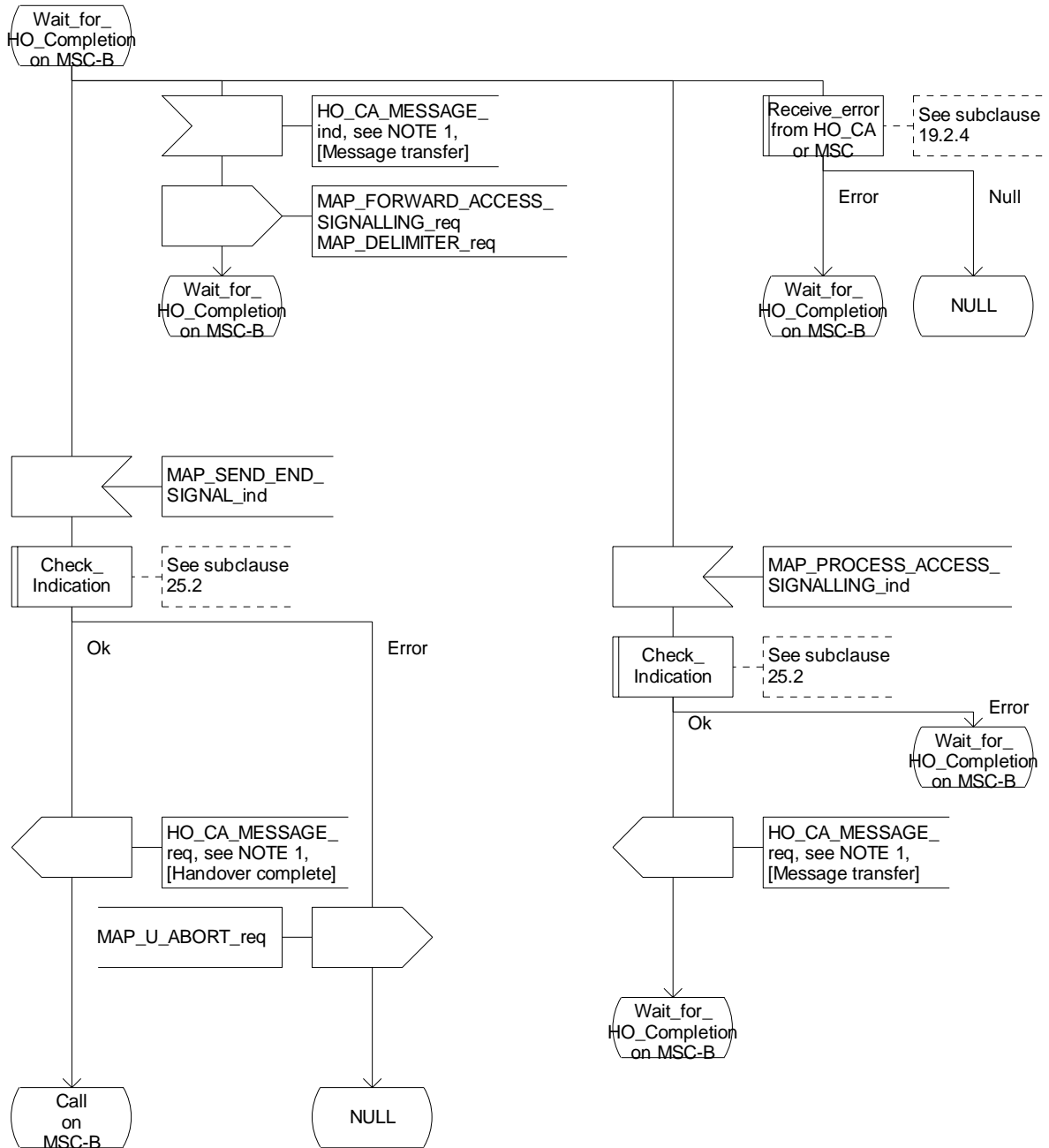


Figure 19.2.2/1 (sheet 3 of 13): Process MSC\_A\_HO

Figure 19.2 2/1: HO in MSC-A

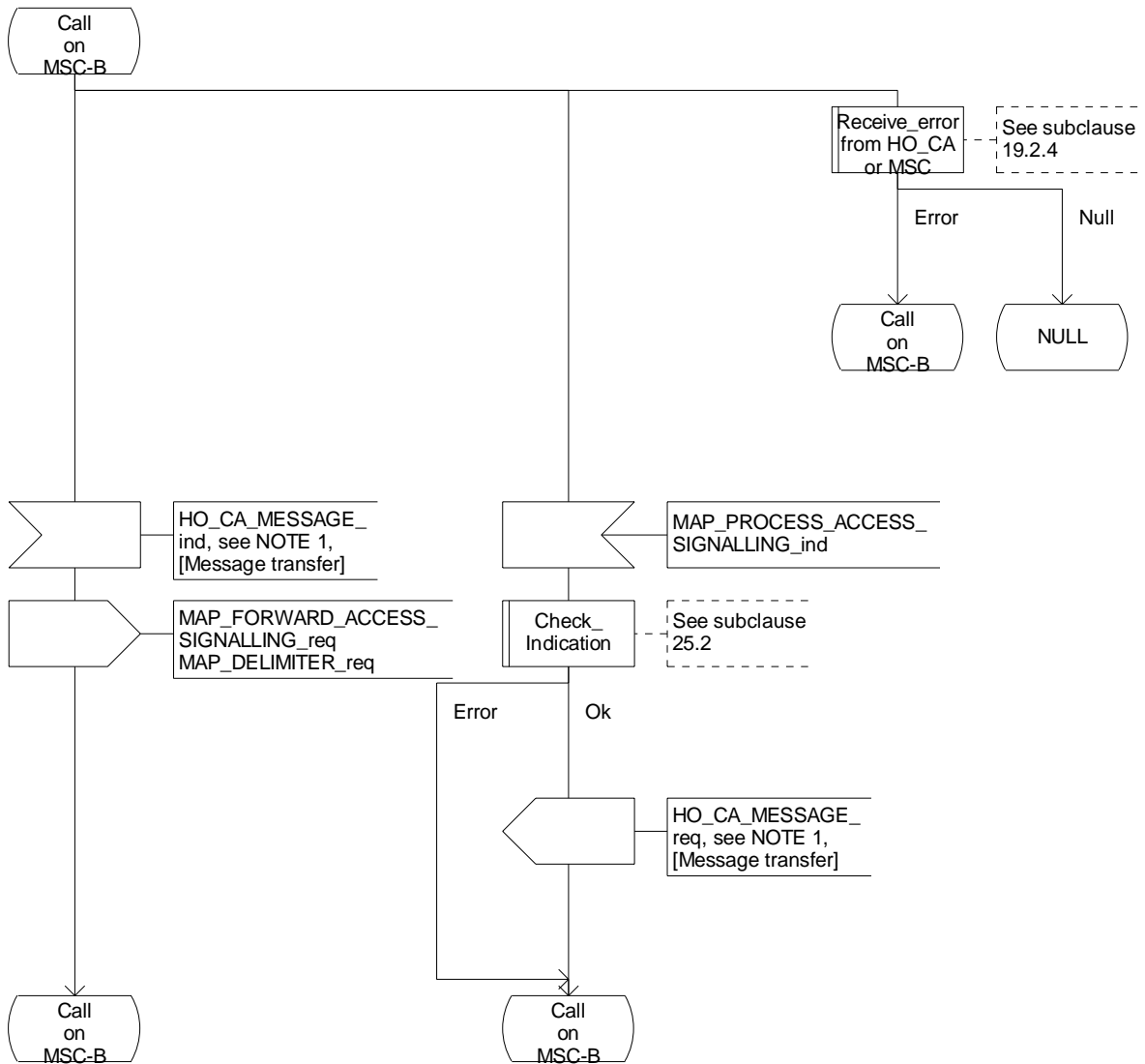


Figure 19.2.2/1 (sheet 4 of 13): Process MSC\_A\_HO



Figure 19.2 2/1: HO in MSC-A

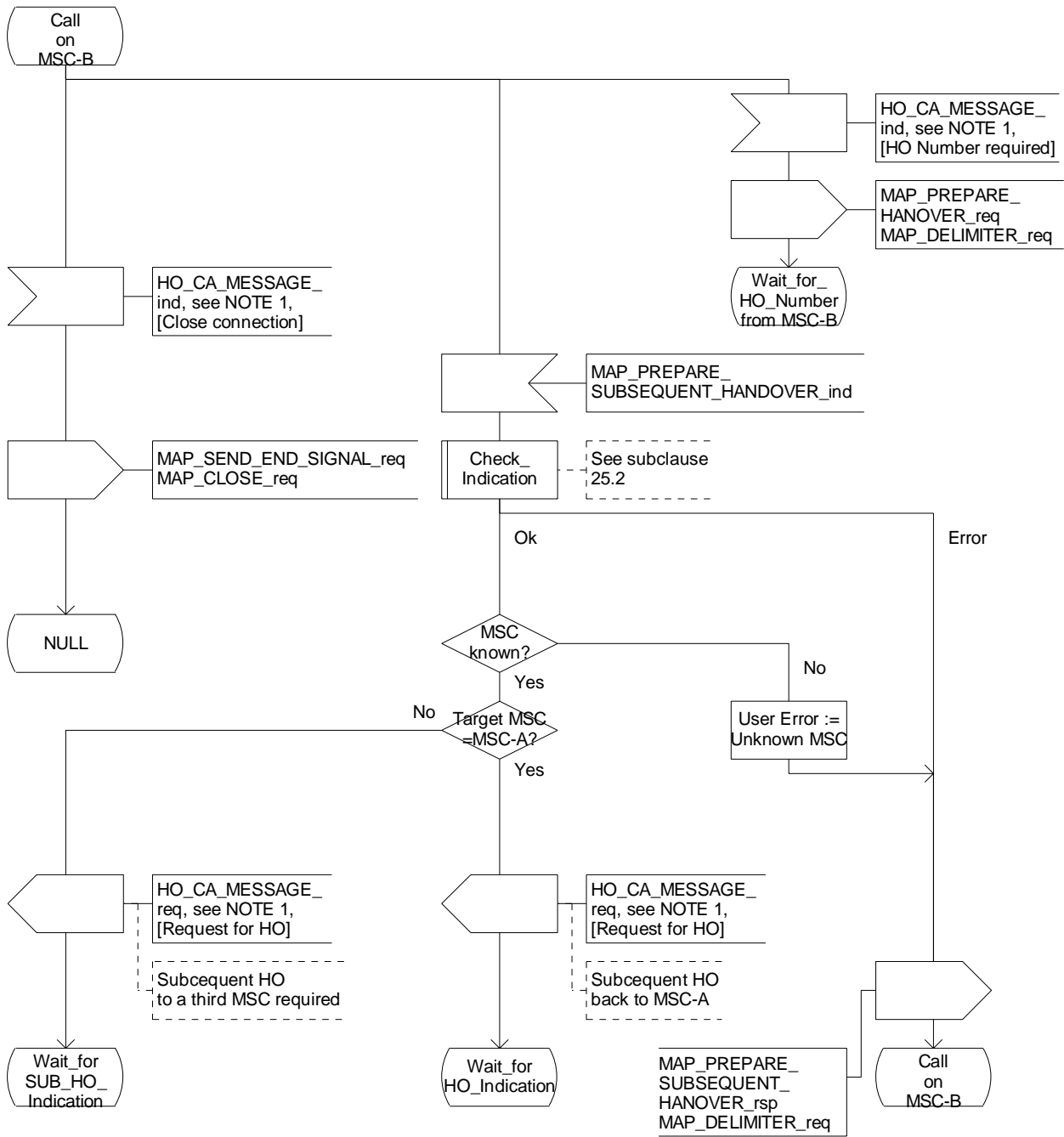


Figure 19.2 2/1: HO in MSC-A

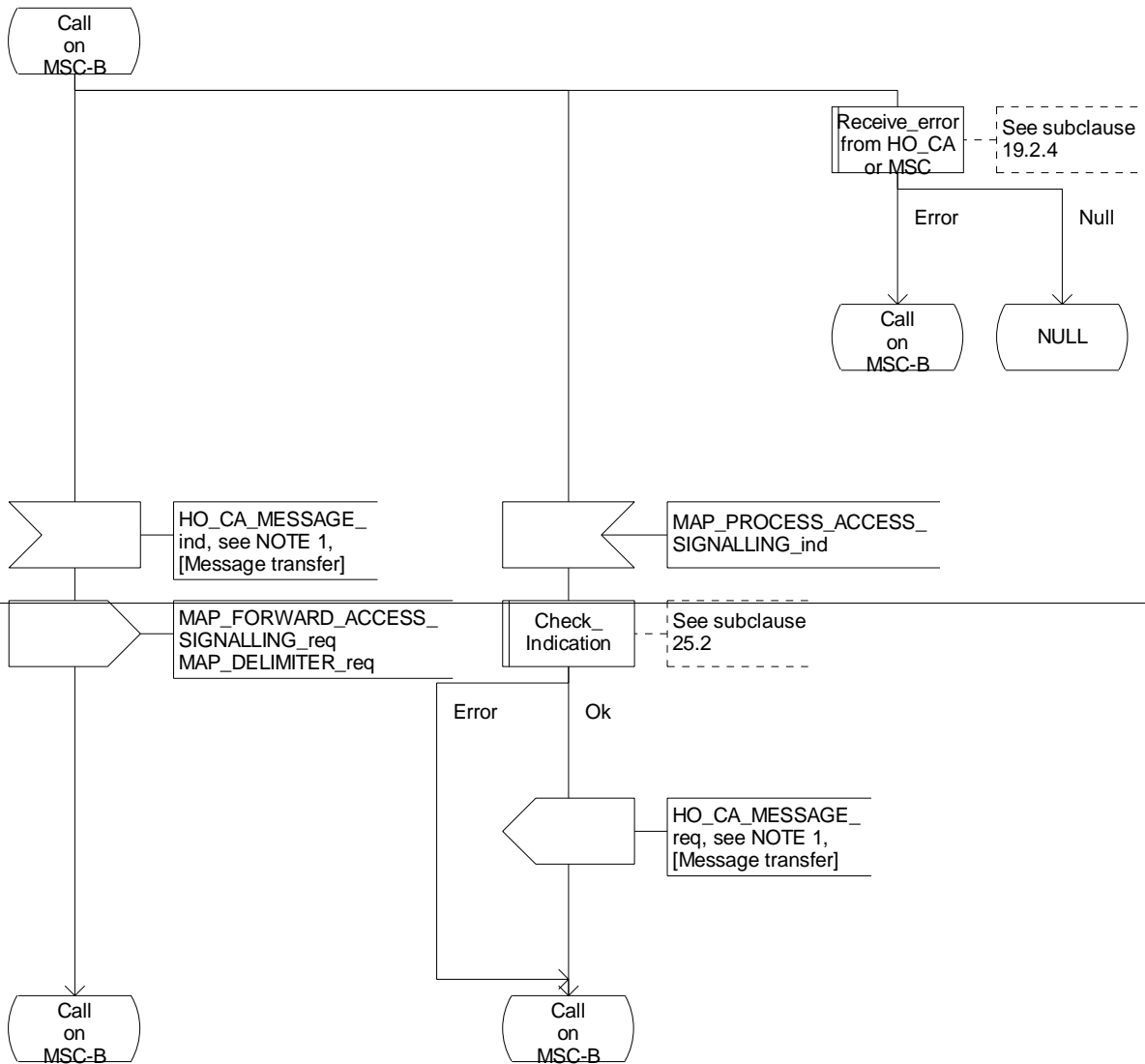


Figure 19.2.2/1 (sheet 5 of 13): Process MSC\_A\_HO

Figure 19.2 2/1: HO in MSC-A

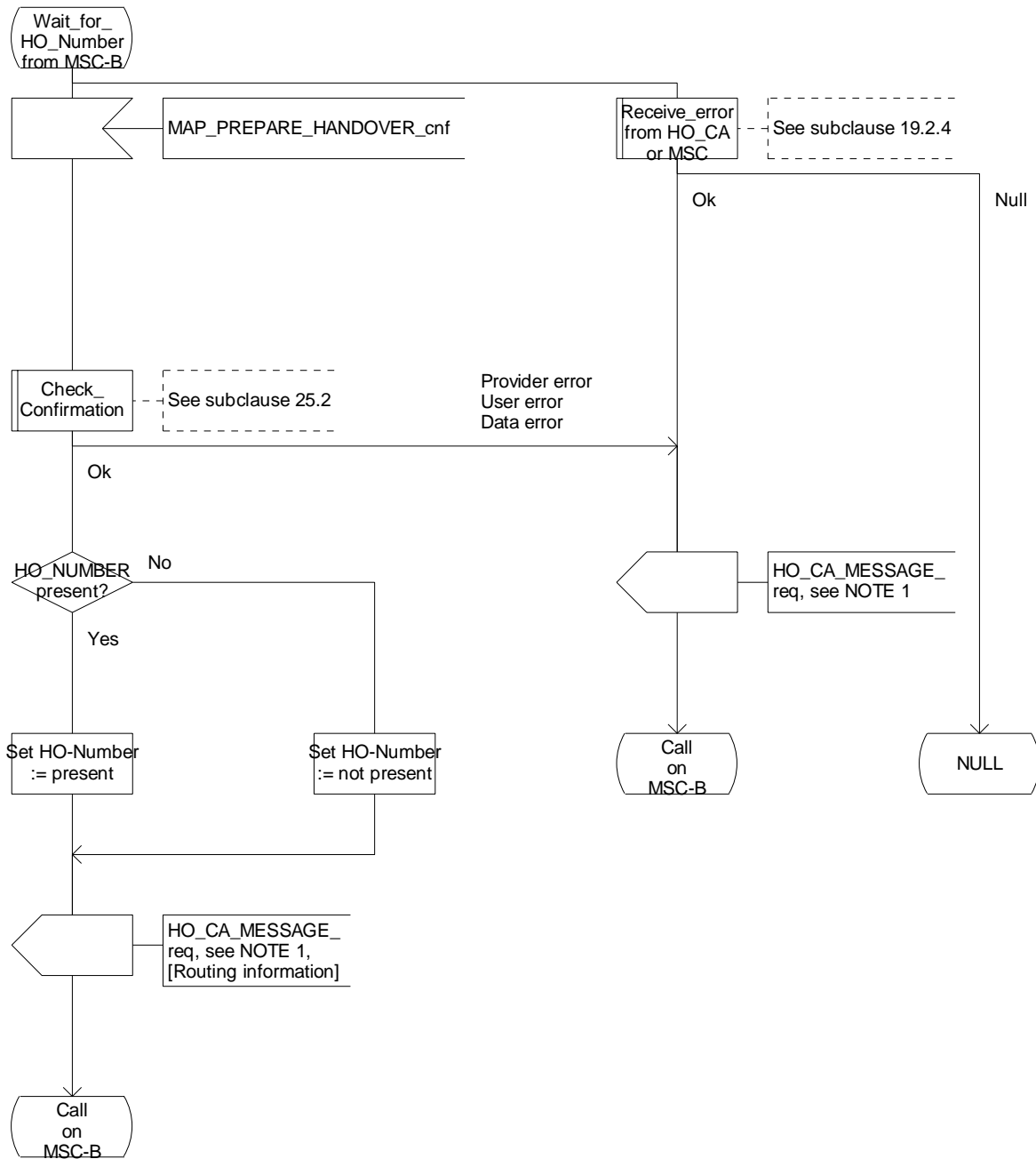


Figure 19.2.2/1 (sheet 6 of 13): Process MSC\_A\_HO

Figure 19.2 2/1: HO in MSC-A

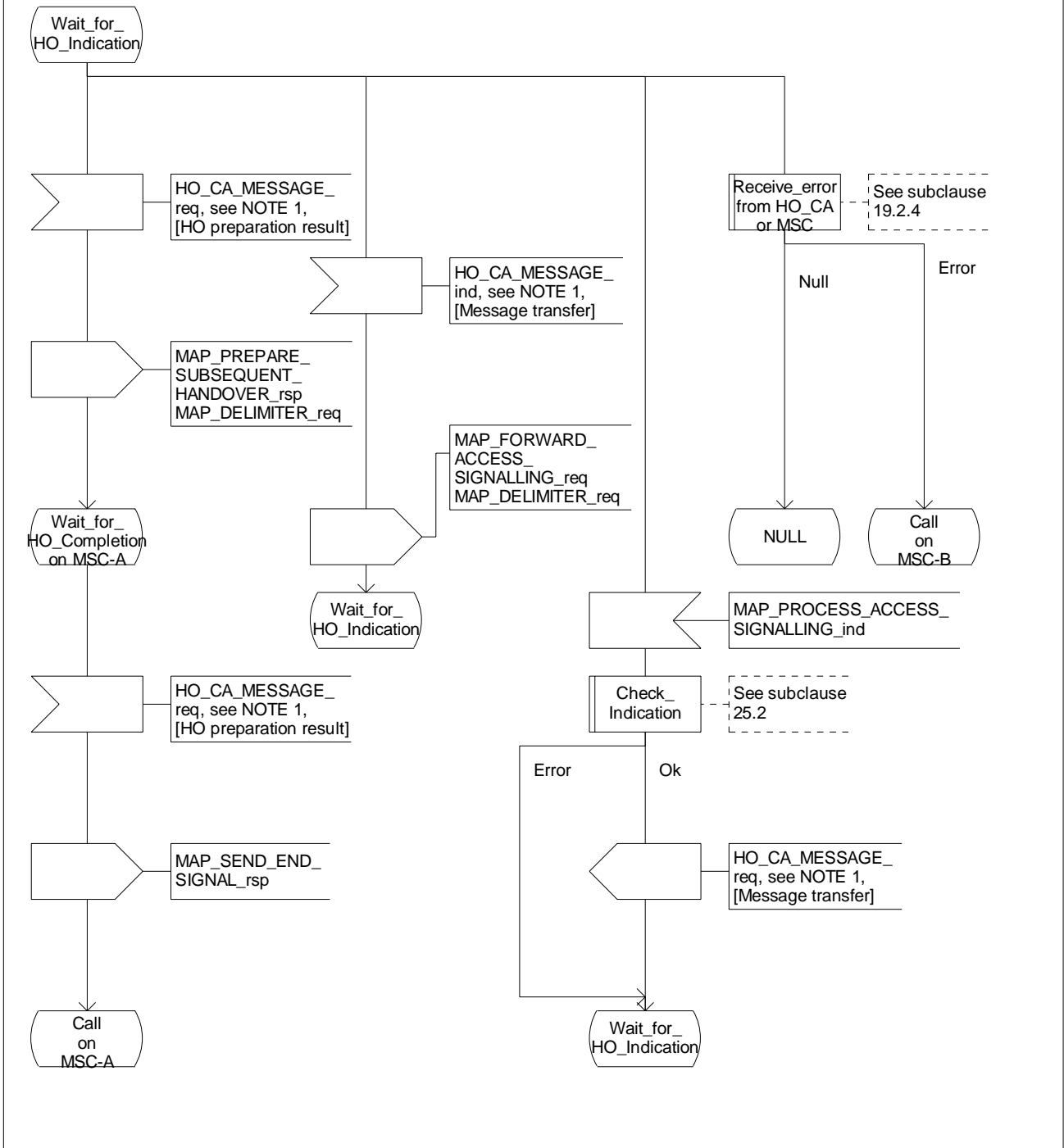


Figure 19.2.2/1 (sheet 7 of 13): Process MSC\_A\_HO

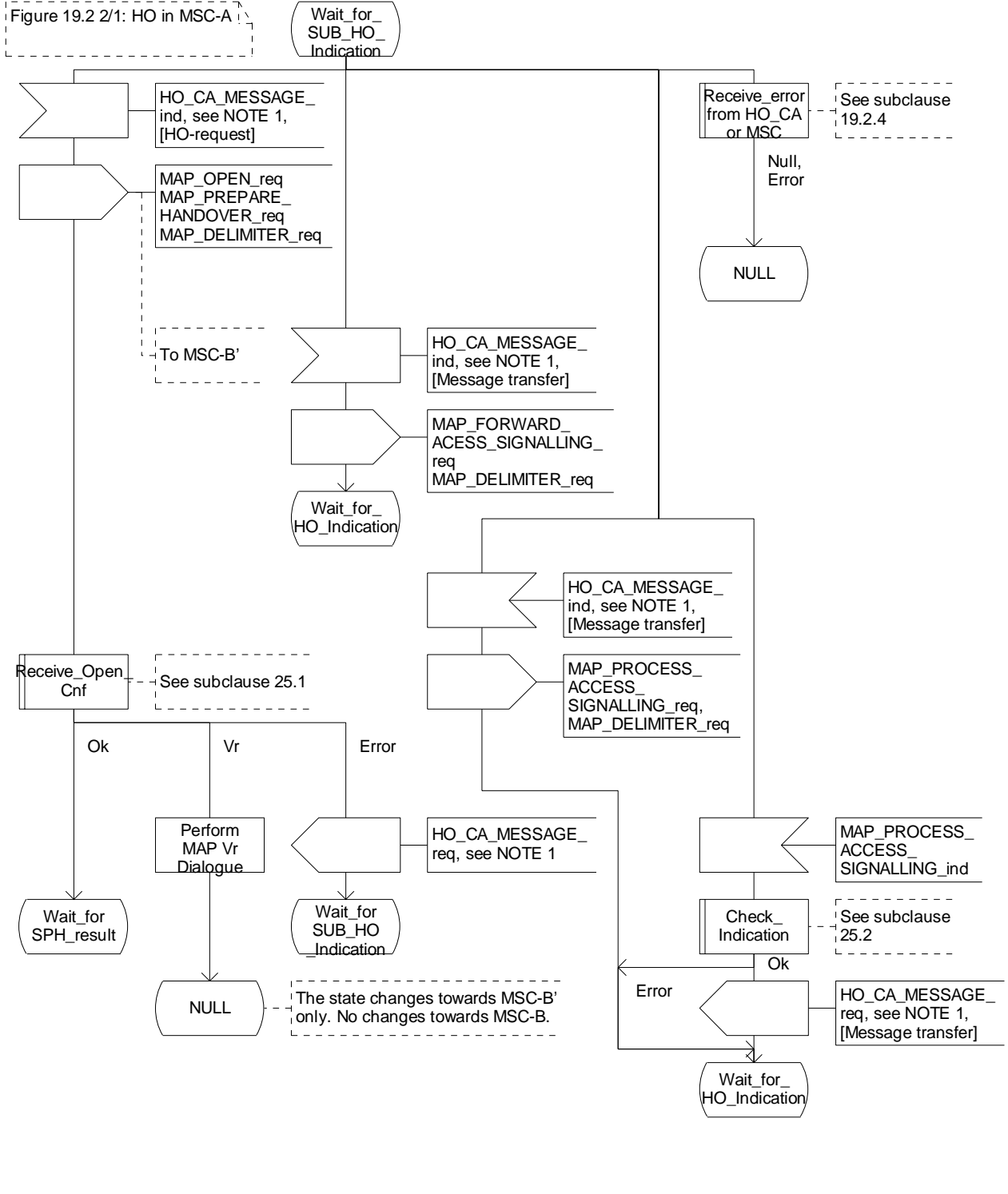
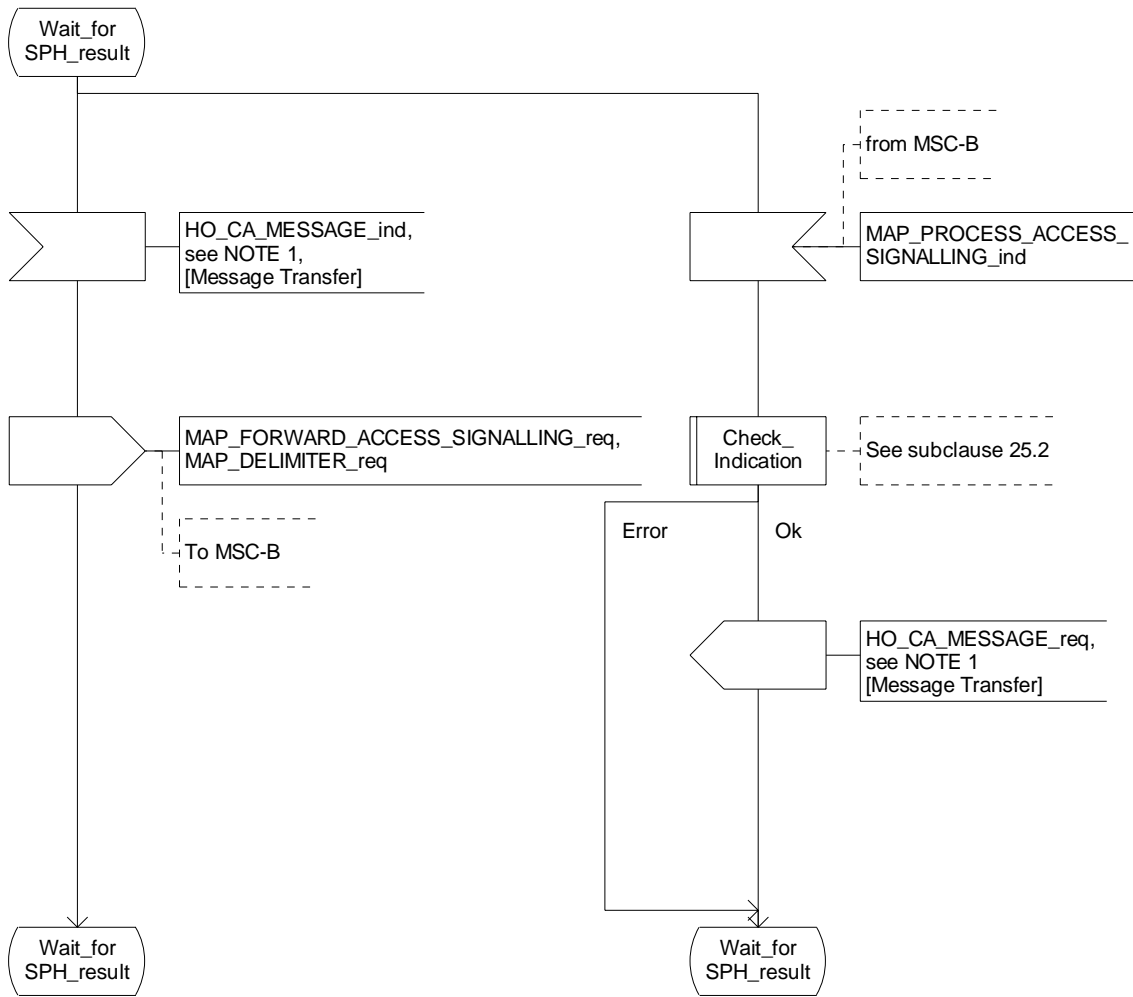


Figure 19.2.2/1 (sheet 8 of 13): Process MSC\_A\_HO

Figure 19.2 2/1: HO in MSC-A



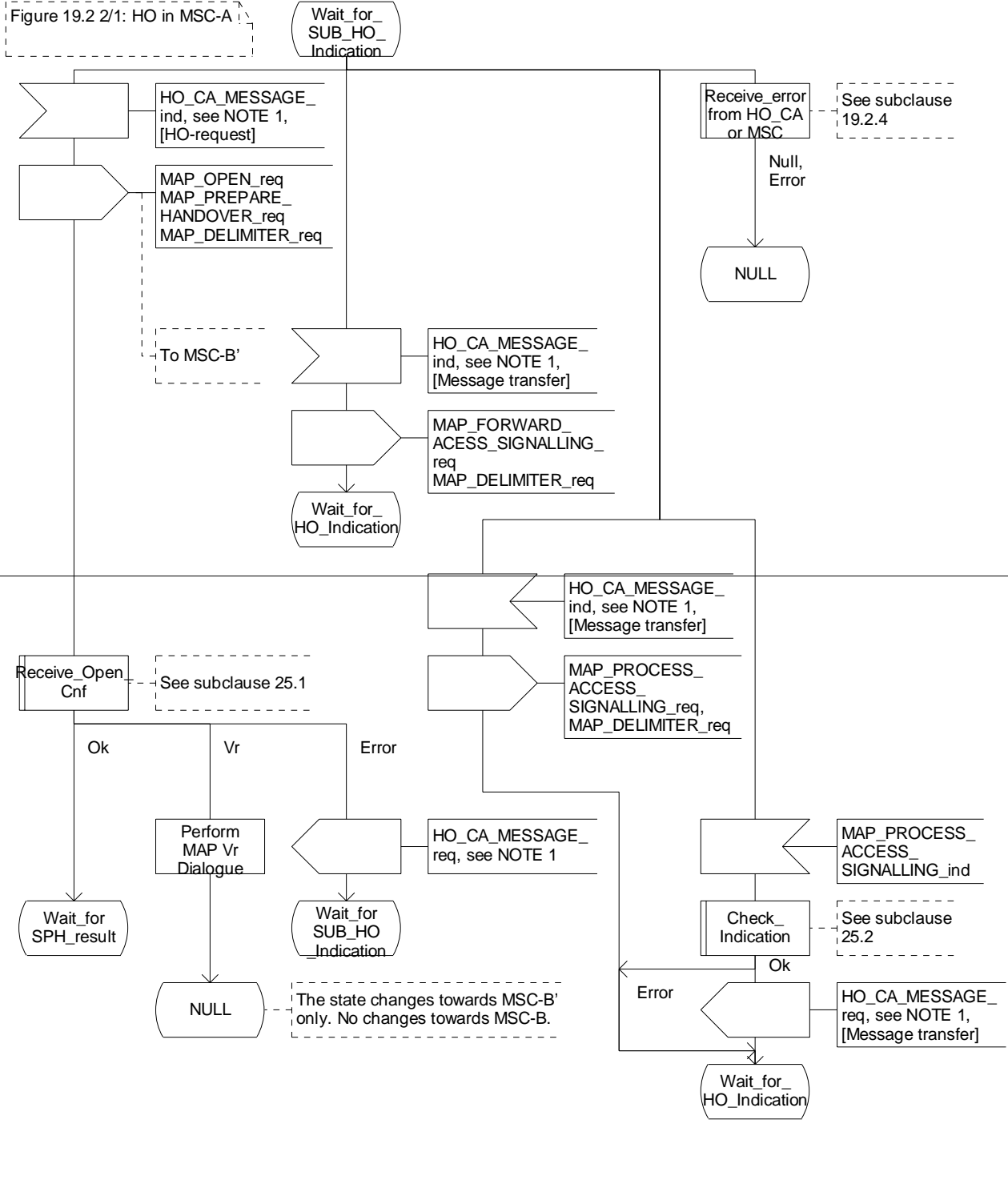


Figure 19.2.2/1 (sheet 9 of 13): Process MSC\_A\_HO

Figure 19.2 2/1: HO in MSC-A

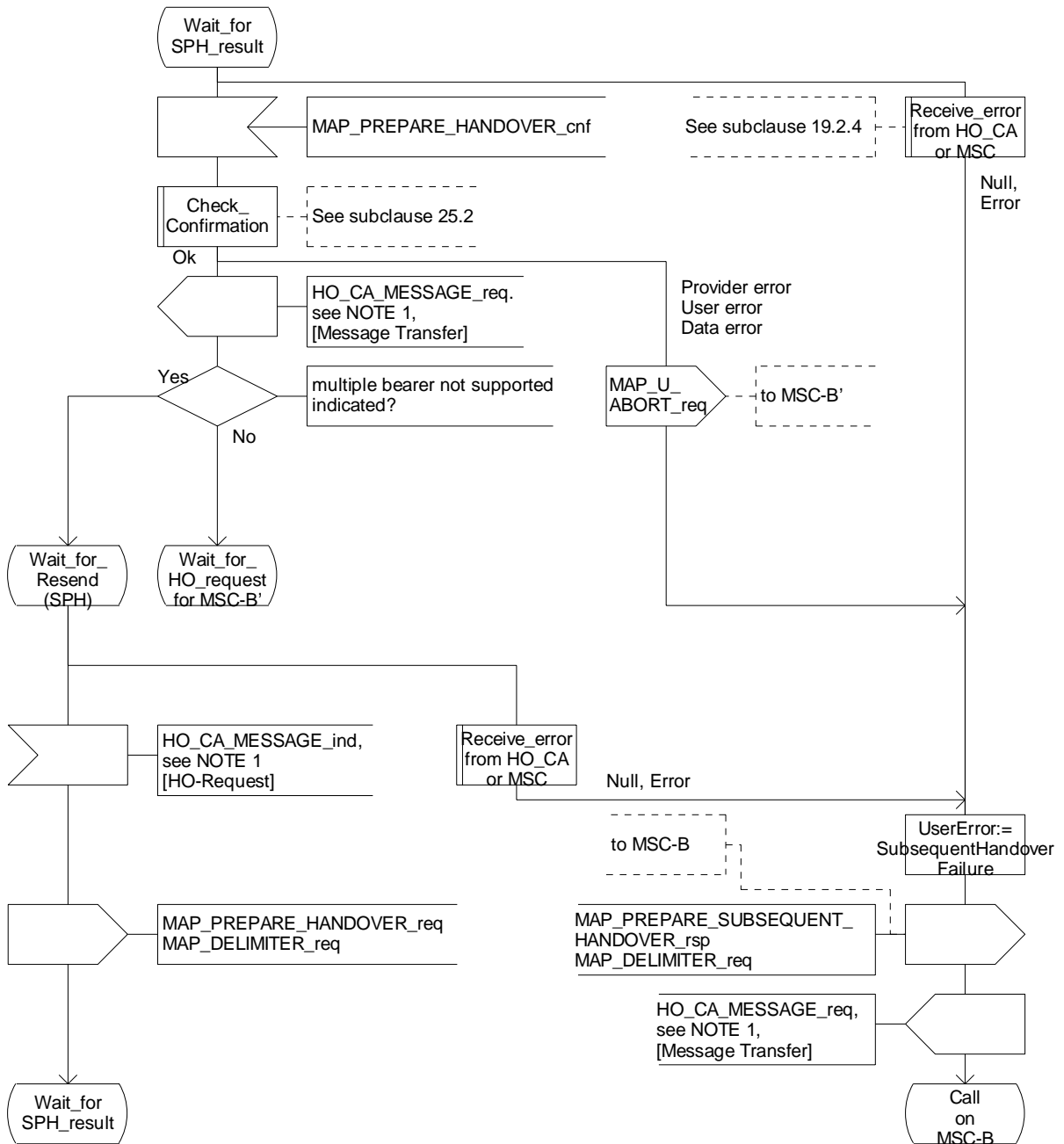


Figure 19.2.2/1 (sheet 10 of 13): Process MSC\_A\_HO



Figure 19.2 2/1: HO in MSC-A

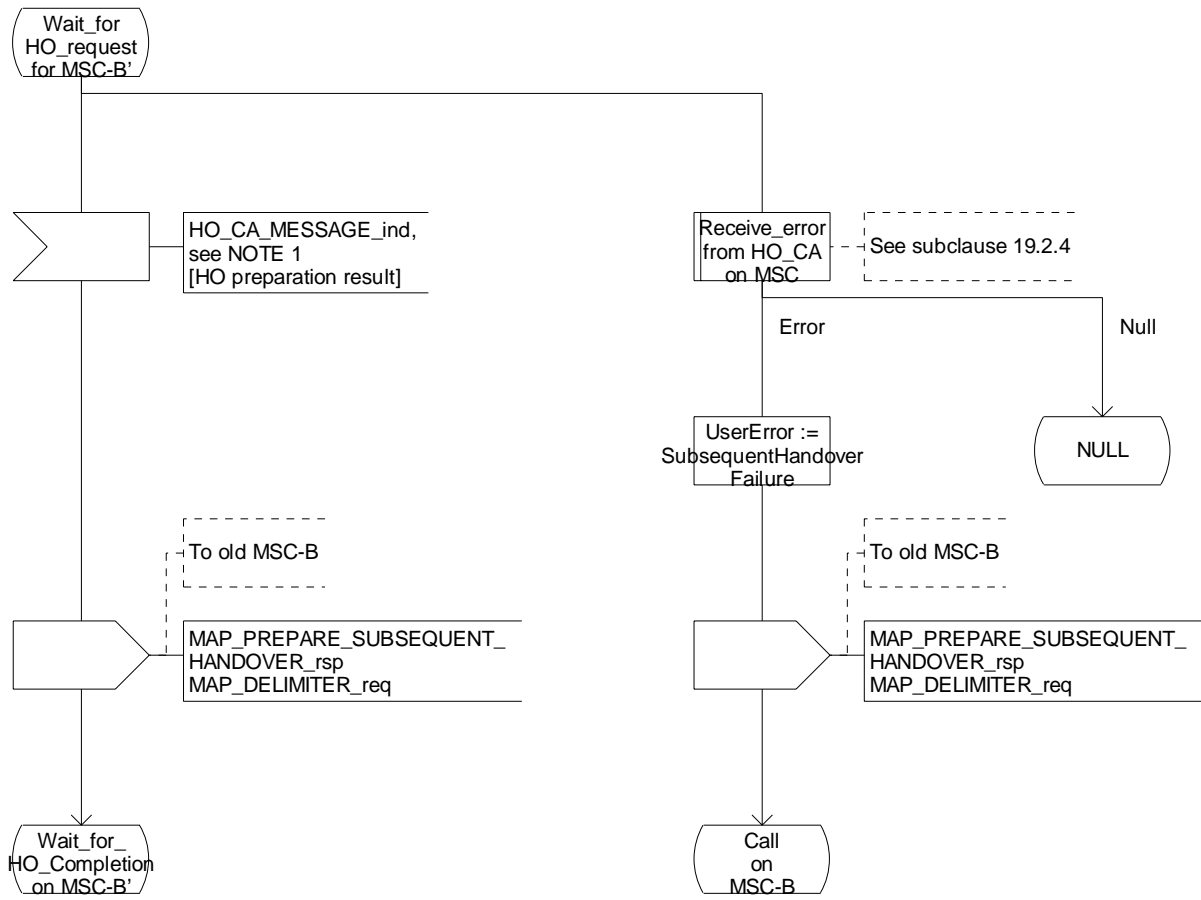


Figure 19.2.2/1 (sheet 11 of 13): Process MSC\_A\_HO

Figure 19.2 2/1: HO in MSC-A

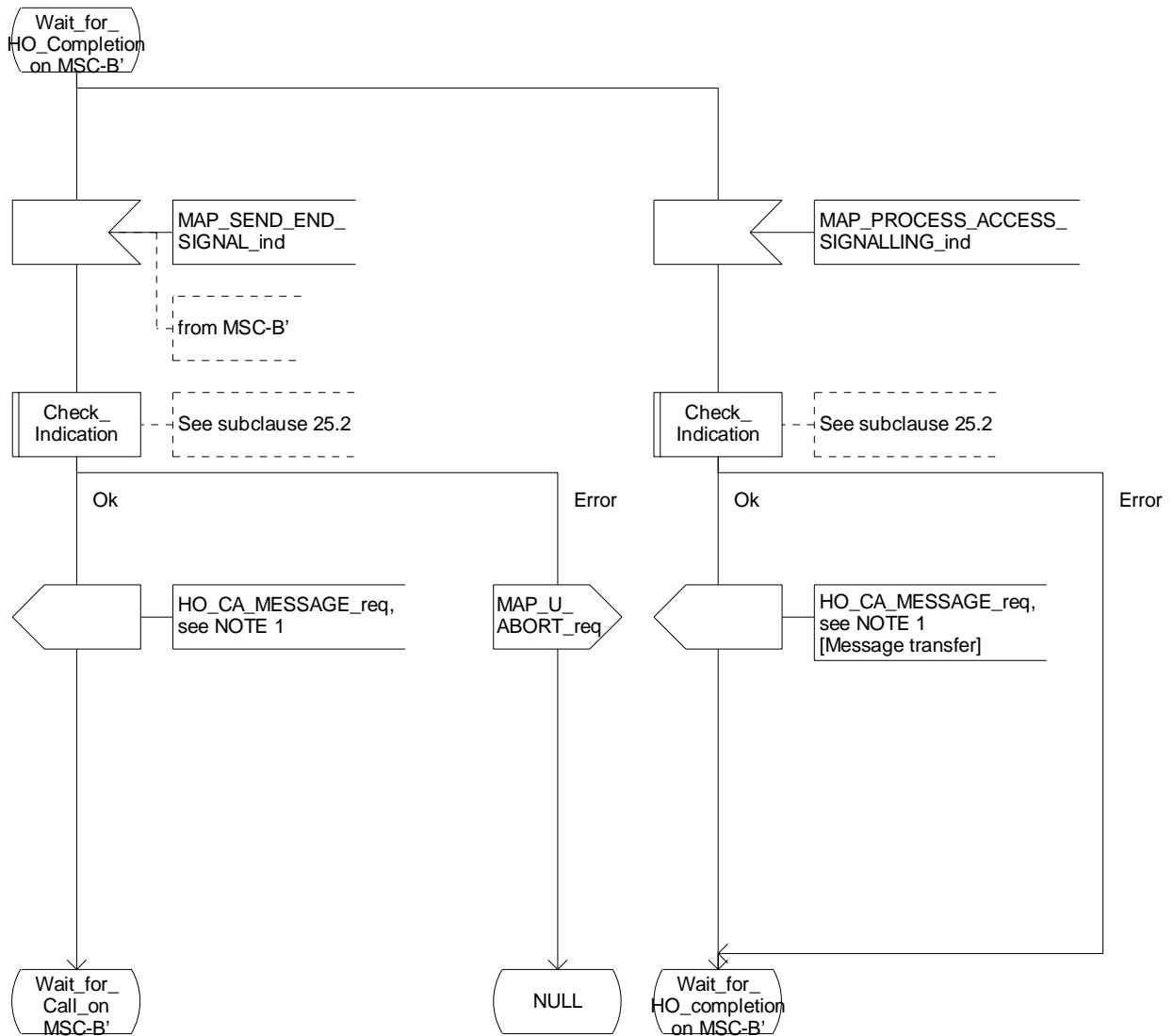


Figure 19.2.2/1 (sheet 12 of 13): Process MSC\_A\_HO

Figure 19.2 2/1: HO in MSC-A

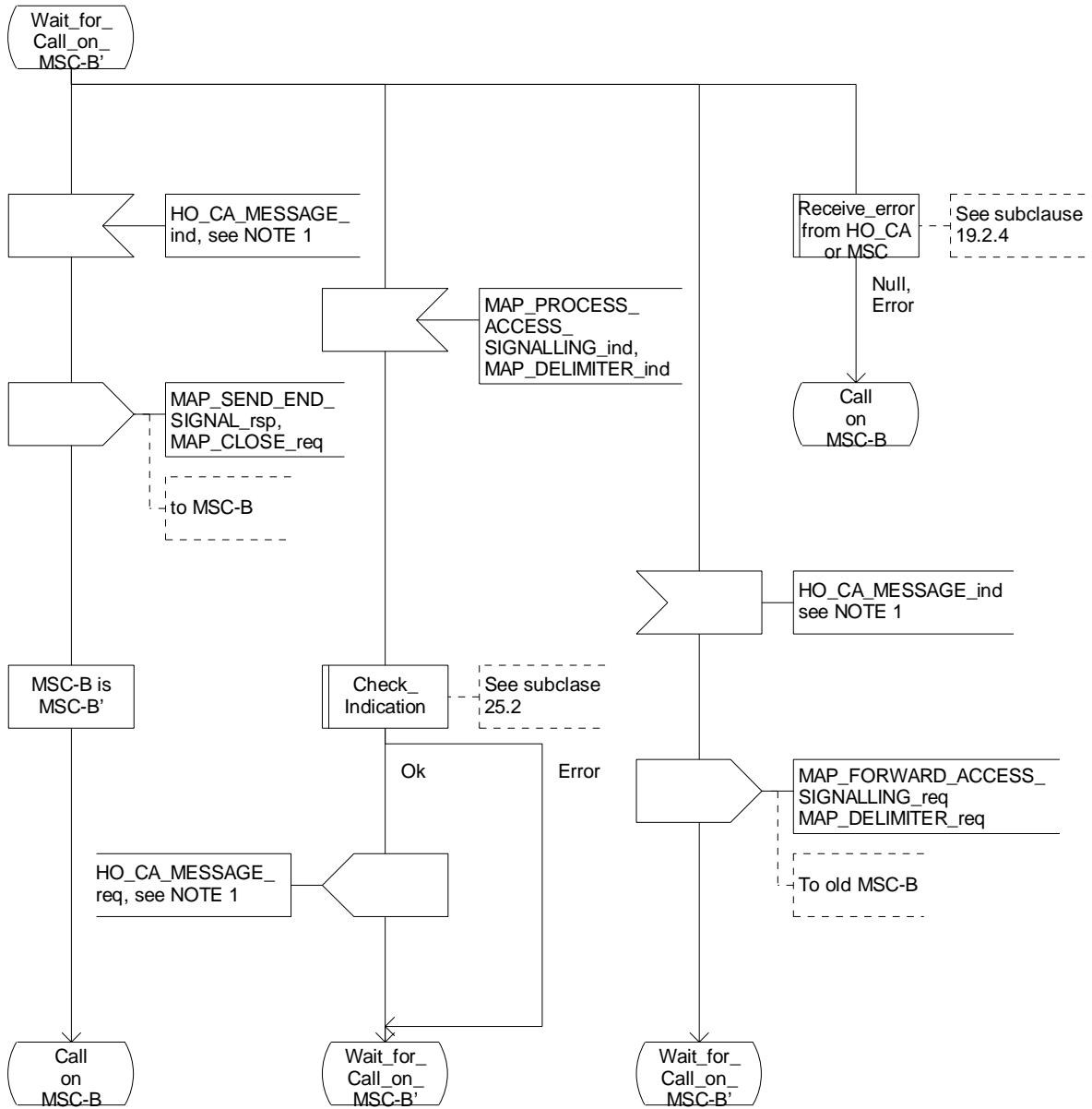


Figure 19.2.2/1 (sheet 13 of 13): Process MSC\_A\_HO

## CHANGE REQUEST

**29.002 CR 186r1**

Current Version: 4.0.1

For submission to: TSG-CN#09 for approval  for information  strategic  non-strategic

**Proposed change affects:** (U)SIM  ME  UTRAN / Radio  Core Network

**Source:** N4 **Date:** 31<sup>th</sup> August 2000

**Subject:** Correction to MSC-A handover SDLs

**Work item:** TEI

<b>Category:</b>	F Correction	<input type="checkbox"/>	<b>Release:</b>	Phase 2	<input type="checkbox"/>
	A Corresponds to a correction in an earlier release	<input checked="" type="checkbox"/>		Release 96	<input type="checkbox"/>
	B Addition of feature	<input type="checkbox"/>		Release 97	<input type="checkbox"/>
	C Functional modification of feature	<input type="checkbox"/>		Release 98	<input type="checkbox"/>
	D Editorial modification	<input type="checkbox"/>		Release 99	<input type="checkbox"/>
				Release 00	<input checked="" type="checkbox"/>

**Reason for change:**

- The new figure 19.2.2/1 (sheet 8 of 13) seems to represent more than just editorial changes (as indicated by CR 143 coversheet)
- Replaced MAP\_Prepare\_Subsequent\_Handover respond by MAP\_forward\_access\_signalling Request
- Replaced Call on MSC-B by Wait\_for\_HO\_indication
- Replaced Wait\_for sub\_ho\_indication by Wait\_for\_Ho\_indication

**Clauses affected:** 19.2.2.5

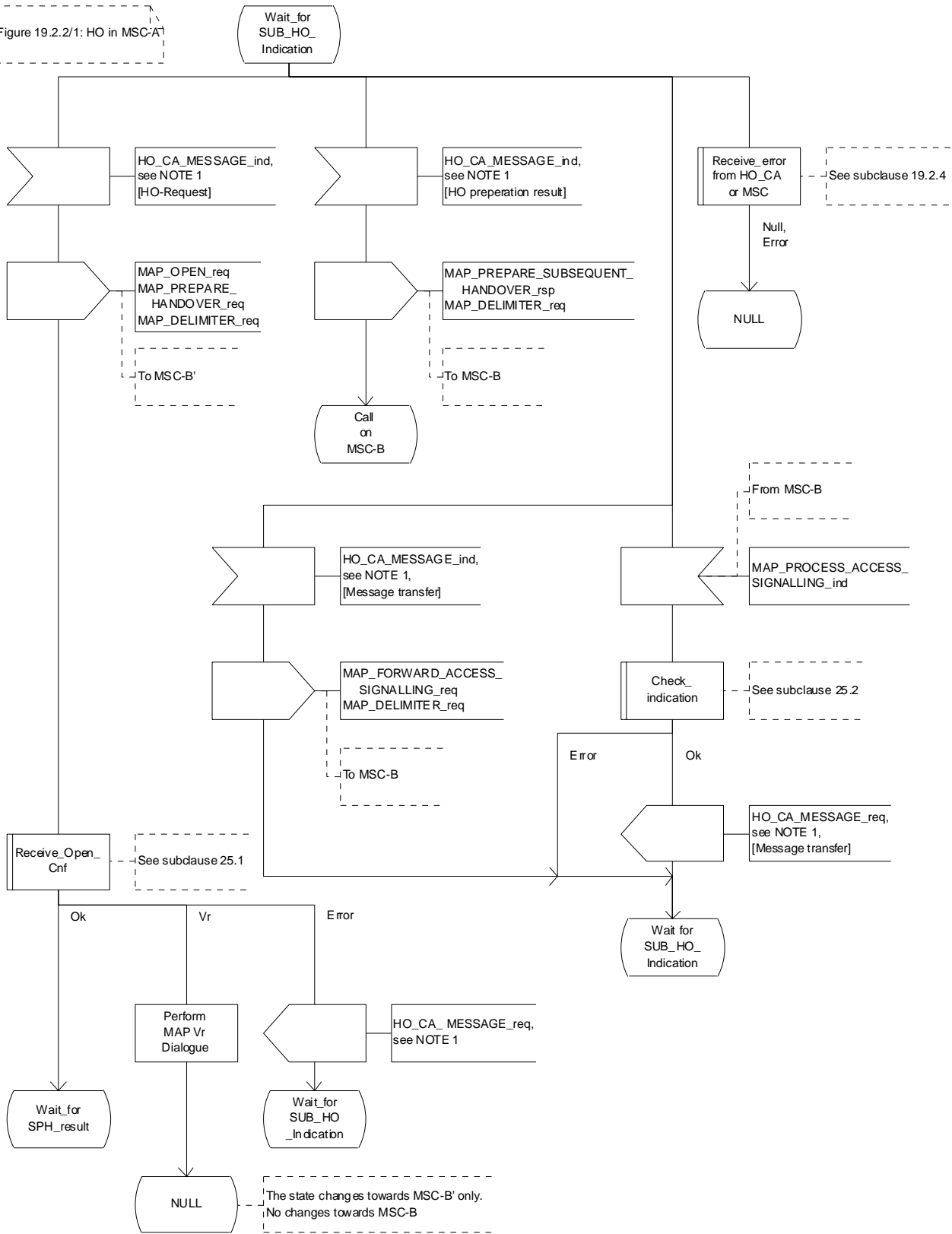
<b>Other specs affected:</b>	Other 3G core specifications	<input type="checkbox"/>	→ List of CRs:	
	Other GSM core specifications	<input type="checkbox"/>	→ List of CRs:	
	MS test specifications	<input type="checkbox"/>	→ List of CRs:	
	BSS test specifications	<input type="checkbox"/>	→ List of CRs:	
	O&M specifications	<input type="checkbox"/>	→ List of CRs:	

**Other comments:** Header for sheet 8 needs changing 19.2.2\_1.7(12) -> 19.2.2\_1.8(13)

Process MSC\_A\_HO

19.2.2\_1.7(12)

Figure 19.2.2/1: HO in MSC-A'



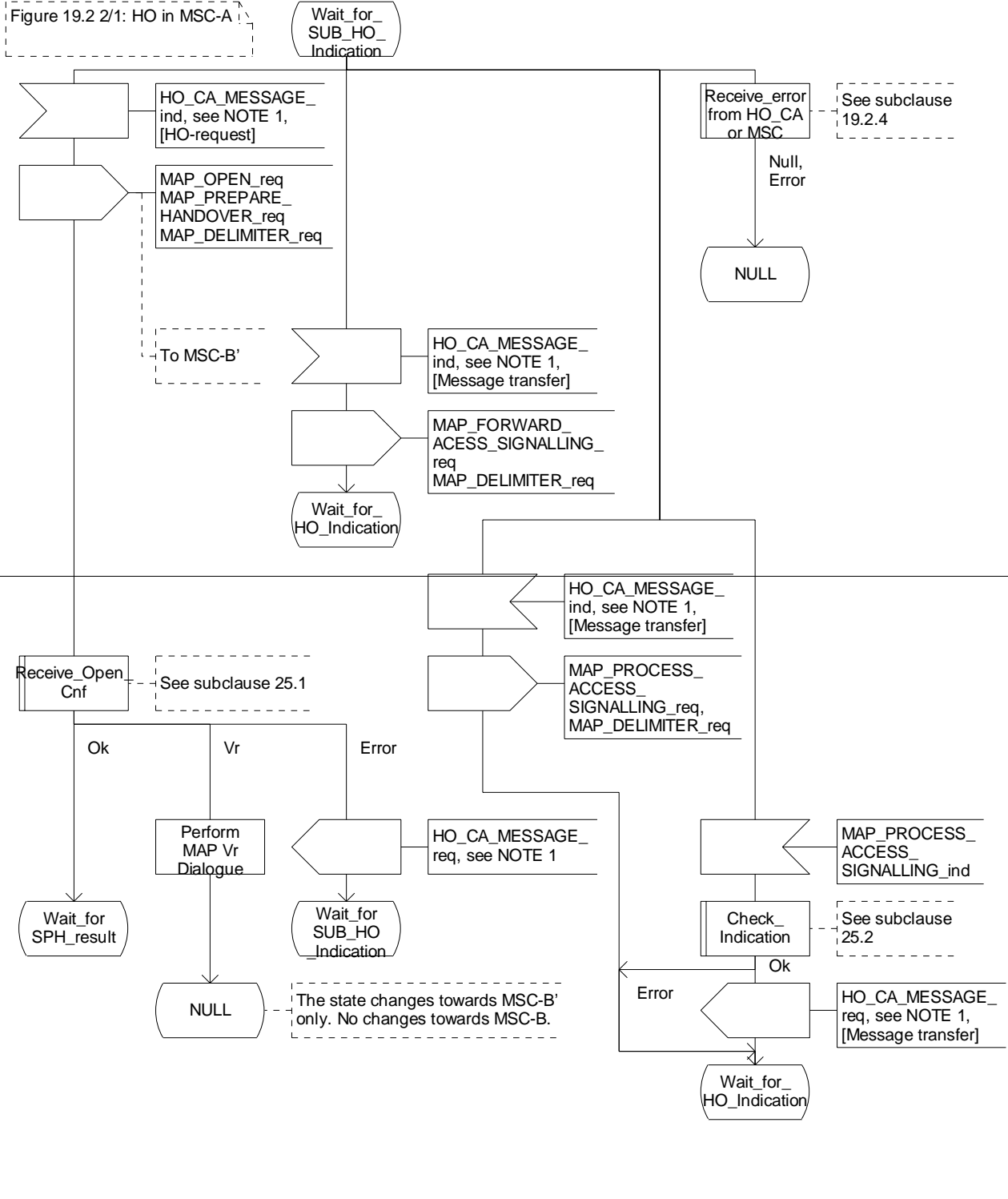


Figure 19.2.2/1 (sheet 8 of 13): Process MSC\_A\_HO