

PCG#14(05)08
Agenda item: 4.4



CT Management Report

Hannu Hietalahti
3GPP TSG CT chairman
(subject to PCG confirming the nomination)
hannu.hietalahti@nokia.com
+358-40-5021724

A GLOBAL INITIATIVE

Topics for CT PCG Presentation

- **Vote results**
- **Organisation**
- **Work transfer**
- **Future meetings**

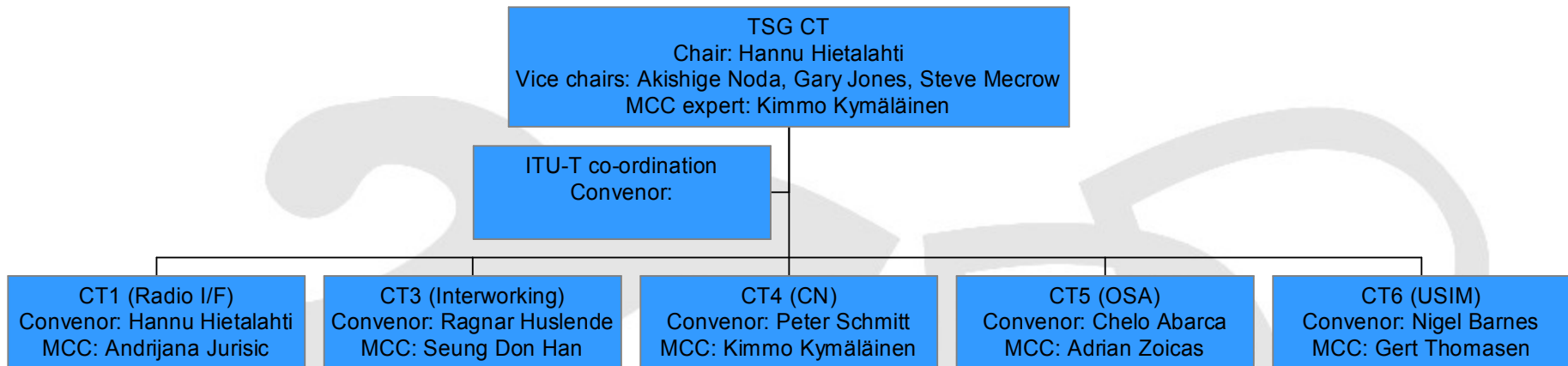
A GLOBAL INITIATIVE

Vote results

- *The first CT meeting #27 was held after the final CN and T meetings, also #27*
- *New CT officials, subject to PCG appointing them based on the outcome of the vote:*
 - *Chairman: Hannu Hietalahti / Nokia (ETSI)*
 - *Vice chairs:*
 - *Akishige Noda / Fujitsu (TTC)*
 - *Gary Jones / T-Mobil (ATIS)*
 - *Steve Mecrow /MMO2 (ETSI)*
 - *MCC support: Kimmo Kymäläinen (MCC)*

A GLOBAL INITIATIVE

CT organisation



- ***CT working groups were declared new with a very narrow margin***
- ***The chairs of the former CN and T WGs were nominated convenors***
- ***Each CT WG will elect their new officials in their second meeting in August 2005***
- ***Terms of Reference***
 - ***CT plenary ToR was approved in CP-050016***
 - ***CT WGs were requested to update their ToR for June 2005***

Work transfer

- ***CT inherits its work from former CN and T***
 - ***Ongoing work items from TSG-T and TSG-CN***
 - ***Specification responsibility from TSG-T and TSG-CN***
 - ***Discontinued T2 work spread to CT1, CT3, CT4, SA1 and SA2***
 - ***OMA MMS group contributes to CT plenary on MMS TS 23.140***
 - ***CT plenary and WGs inherit the meeting and tdoc numbering from their predecessors***
 - ***...and of course the people!***
- ***“The show must go on”***

A GLOBAL INITIATIVE

CT meetings 2005

May 2005					
TITLE	TYPE	DATES	LOCATION	CTRY	
3GPPCT5#31	WG	9 - 13 May 2005	Osaka	JP	
Jun 2005					
TITLE	TYPE	DATES	LOCATION	CTRY	
3GPPCT#28	OR	1 - 3 Jun 2005	Quebec	CA	
Aug 2005					
TITLE	TYPE	DATES	LOCATION	CTRY	
3GPPCT6#36	WG	9 - 12 Aug 2005	Dublin	IE	
3GPPCT1#39	WG	29 Aug - 2 Sep 2005	LONDON	GB	
3GPPCT3#37	WG	29 Aug - 2 Sep 2005	London	GB	
3GPPCT4#28	WG	29 Aug - 2 Sep 2005	London	GB	
3GPPCT5#32	WG	29 Aug - 2 Sep 2005	London	GB	
Sep 2005					
TITLE	TYPE	DATES	LOCATION	CTRY	
3GPPCT#29	OR	21 - 23 Sep 2005	Tallinn	EU	
Oct 2005					
TITLE	TYPE	DATES	LOCATION	CTRY	
3GPPCT5#33	WG	10 - 13 Oct 2005	Boston	US	
3GPPCT4#29	WG	31 Oct - 4 Nov 2005	Berlin	EU	
3GPPCT1#40	WG	31 Oct - 4 Nov 2005	Berlin	EU	
3GPPCT3#38	WG	31 Oct - 4 Nov 2005	Berlin	EU	
Nov 2005					
TITLE	TYPE	DATES	LOCATION	CTRY	
3GPPCT6#37	WG	7 - 10 Nov 2005	Sophia Antipolis	FR	
3GPPCT#30	OR	30 Nov - 2 Dec 2005	Malta	MT	



CT meetings 2006 (TBC)

Feb 2006					
TITLE	TYPE	DATES	LOCATION	CTRY	
3GPP CT1, CT3, CT4 (CT5 and CT6 ??)	WG	06 – 10 Feb/ 12 – 17 Feb	TBD		
Mar 2006					
TITLE	TYPE	DATES	LOCATION	CTRY	
3GPPCT#31	OR	8 - 10 Mar 2006	CHINA	CN	
April/May 2006					
TITLE	TYPE	DATES	LOCATION	CTRY	
3GPP CT1, CT3, CT4 (CT5 and CT6 ??)		17 – 21 Apr/ 08 – 12 May	TBD		
May 2006					
TITLE	TYPE	DATES	LOCATION	CTRY	
3GPPCT#32	OR	31 May - 2 Jun 2006	TBD		
July/August/September 2006					
TITLE	TYPE	DATES	LOCATION	CTRY	
3GPP CT1, CT3, CT4 (CT5 and CT6 ??)	OR	24 – 28 July 31 July – 04 Aug	TBD		
Sep 2006					
TITLE	TYPE	DATES	LOCATION	CTRY	
3GPPCT#33	OR	20 - 22 Sep 2006	TBD		
November 2006					
TITLE	TYPE	DATES	LOCATION	CTRY	
3GPP CT1, CT3, CT4 (CT5 and CT6 ??)	OR	23 – 27 Oct/ 29 Oct – 02 Nov	TBD		
Nov 2006					
TITLE	TYPE	DATES	LOCATION	CTRY	
3GPPCT#34	OR	29 Nov - 1 Dec 2006	TBD		